

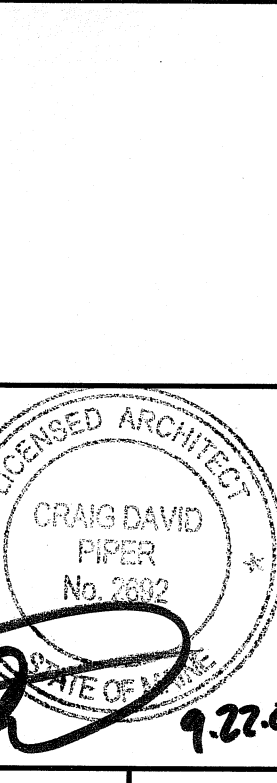
MAINE MEDICAL CENTER BRAMHALL CAMPUS - PORTLAND, MAINE LINEAR ACCELERATOR REPLACEMENT

GENERAL NOTES:

- FIELD VERIFY ALL DIMENSIONS AND LAYOUT PRIOR TO PROCEEDING WITH WORK. NOTIFY ARCHITECT IN WRITING OF ANY DISCREPANCIES OR INCONSISTENCIES. FAILURE TO REPORT ANY DISCREPANCIES WITHIN THESE CONSTRUCTION DOCUMENTS TO THE ARCHITECT WILL NOT BE GROUNDS FOR ADDITIONAL COST OR CHANGE ORDERS.
- CONTRACTOR SHALL BE RESPONSIBLE FOR PROVIDING ALL MATERIALS (UNLESS NOTED OTHERWISE), AND WORKMANSHIP IN ACCORDANCE WITH FEDERAL, STATE, CITY AND LOCAL BUILDING CODES AND THEIR REQUIREMENTS.
- CONTRACTOR TO CONFIRM EXISTING WALL RATINGS.
- CONTRACTOR AND ALL TRADES SHALL NOTE REQUIREMENTS OF "GENERAL NOTES" ON ALL SHEETS.
- EACH TRADE TO PROVIDE SMOKE OR FIRE SEALANT AT PENETRATIONS AS REQUIRED FOR WALL TYPE. ALL SEALANT, FIRE STOPPING, AND SMOKE STOPPING ASSEMBLIES SHALL BE U.L. RATED.
- DIMENSIONS ARE FACE OF CONCRETE, FACE OF MASONRY, FACE OF EXISTING PARTITION AND CENTERLINE OF STUD PARTITIONS, UNLESS INDICATED OTHERWISE.
- REFER TO ALL CONSTRUCTION DOCUMENTS FOR REQUIREMENTS WHICH MAY AFFECT THE WORK IN ANOTHER DISCIPLINE AND COORDINATE WORK.
- REFER TO DETAILS FOR ADDITIONAL DIMENSIONAL INFORMATION.
- DOOR JAMBS SHALL BE LOCATED 6" FROM CORNER IN STUD PARTITIONS AND 8" FROM CORNER IN MASONRY PARTITIONS, UNLESS INDICATED OTHERWISE.
- PROVIDE BLOCKING IN WALLS AS NECESSARY WHERE CASEWORK, SHELVES, HANDRAILS, AND MISC. EQUIPMENT ARE LOCATED.
- PATCH ALL HOLES, WALLS AND CRACKS IN ROOMS TO RECEIVE NEW PAINT.
- ANY EXISTING WALLS THAT ARE FOUND TO BE UNBRACED OR DO NOT EXTEND TO BOTTOM OF DECK/SLAB SHOULD BE BRACED BACK TO STRUCTURE. WHEN PRIVACY IS AN ISSUE EXTEND WALL TO BOTTOM OF DECK/SLAB.
- DO NOT SCALE DRAWINGS.
- "PROVIDE" MEANS "FURNISH AND INSTALL".

144 Fore Street, P.O. Box 618
Portland, Maine 04104
Tel: (207) 772-3846
Fax: (207) 772-1070
www.smri.com

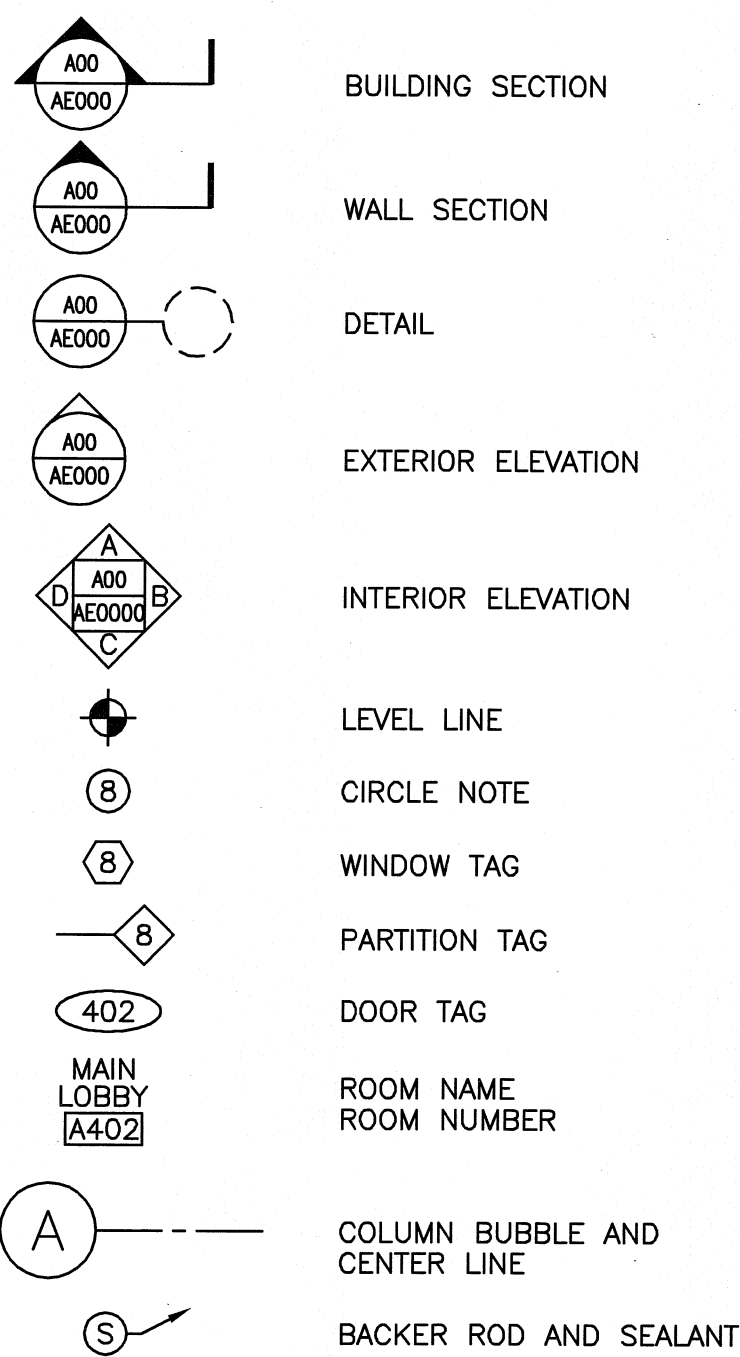
ARCHITECTURE
ENGINEERING
PLANNING
INTERIOR DESIGN
COMMISSIONING



ABBREVIATIONS

AB	ANCHOR BOLT	L	ANGLE; LENGTH
AC, A/C	AIR CONDITIONING	LF	LEFT
ACCU	AIR CONDITIONING CONDENSER UNIT	LINO	SHEET LINOLEUM
ACPLAS	ACOUSTICAL PLASTER	LL	LIVE LOAD
ACT	ACOUSTIC CEILING TILE	LLH	LONG LEG HORIZONTAL
AGG	AGGREGATE	LLV	LONG LEG VERTICAL
ALT	ALTERNATE	LP	LIGHTING PANEL; LIQUIFIED PROPANE
AP	ACCESS PANEL		
APPROX	APPROXIMATE		
ARCH	ARCHITECTURAL		
BCX	BOTTOM CHORD EXTENSION	MAX	MAXIMUM
BD	BOARD	MB	MARKER BOARD
BG	BUMPER GUARD	MDO	MEDIUM DENSITY OVERLAY
BIT	BITUMINOUS	MECH	MECHANICAL
BLDG	BUILDING	MFR	MANUFACTURER
BLP	BORROWED LIGHT PANEL	MIN	MINIMUM
BO	BOTTOM OF	MISC	MISCELLANEOUS
BOF	BOTTOM OF FOOTING	MO	MASONRY OPENING
BOS	BOTTOM OF STEEL	MR	MOISTURE-RESISTANT
BOT	BOTTOM	MUA	MAKE-UP AIR
BRDG	BRIDGING	N	NOSING
BRG	BEARING	NCB	NEW CATCH BASIN
BS	BOTH SIDES	NDMH	NEW DRAIN MANHOLE
BSE	BRICK SHELF ELEVATION	NFM	NEW FORCE MAINE
		NIC	NOT IN CONTRACT
		NS	NEAR SIDE
		NSD	NEW STORM DRAIN LINE
		NSS	NEW SANITARY SEWER LINE
		NTS	NOT TO SCALE
		NW	NEW WATER LINE
		OC	ON-CENTER
		OH	OVERHEAD
		PA	PUBLIC ADDRESS
		PAF	POWDER-ACTUATED FASTENER
		PDU	POOL DEHUMIDIFICATION UNIT
		PL	PLATE; PROPERTY LINE
		PLAM	PLASTIC LAMINATE
		PLF	POUNDS PER LINEAR FOOT
		PP	POWER PANEL
		PSF	POUNDS PER SQUARE FOOT
		PSI	POUNDS PER SQUARE INCH
		PT	PRESSURE-TREATED
		PVC	POLYVINYL CHLORIDE
		PVMT	PAVEMENT
		R	RISER; RADIUS
		RB	RESILIENT BASE
		RD	ROOF DRAIN
		REINF	REINFORCED
		REQ'D	REQUIRED
		RT	RIGHT
		RO	ROUGH OPENING
		ROW	RIGHT OF WAY
		RR	RUB-RAIL
		RTU	ROOFTOP UNIT (HVAC)
		SACT	SUSPENDED ACOUSTIC TILE CEILING
		SC	SOLID CORE
		SF	SQUARE FOOT; SUPPLY FAN
		SHT	SHEET
		SIM	SIMILAR
		SK	SHEAR KEY
		SN	SANITARY NAPKIN (DISPENSER)
		SP	SPECIAL
		SS	STAINLESS STEEL
		STA	STATION
		STL	STEEL
		STRUC	STRUCTURAL
		T	TREAD
		TB	TACKBOARD
		T&B	TOP AND BOTTOM
		TBM	TEMPORARY BENCHMARK
		TCE	TOP CHORD EXTENSION
		TJ	TIE JOIST
		TO	TOP
		TOC	TOP OF CONCRETE
		TOF	TOP OF FOOTING
		TOM	TOP OF MASONRY
		TOP	TOP OF PIER
		TOS	TOP OF STEEL; TOP OF SLAB
		TOW	TOP OF WALL
		TP	TOILET PAPER (DISPENSER); TEST PIT
		TS	TUBE STEEL
		TYP	TYPICAL
		UH	UNIT HEATER
		UNO	UNLESS NOTED OTHERWISE
		V	VENT PIPE; VERTICAL
		VB	VAPOR BARRIER
		VCT	VINYL COMPOSITION TILE
		VERT	VERTICAL
		VP	VISION PANEL
		VTR	VENT THROUGH THE ROOF
		W/	WITH
		WC	WATER CLOSET
		WF	WIDE FLANGE
		WH	WATER HEATER
		W/O	WITHOUT
		WP	WORKING POINT
		WS	WEB STIFFENER
		WWF	WELED WIRE FABRIC

SYMBOL LEGEND

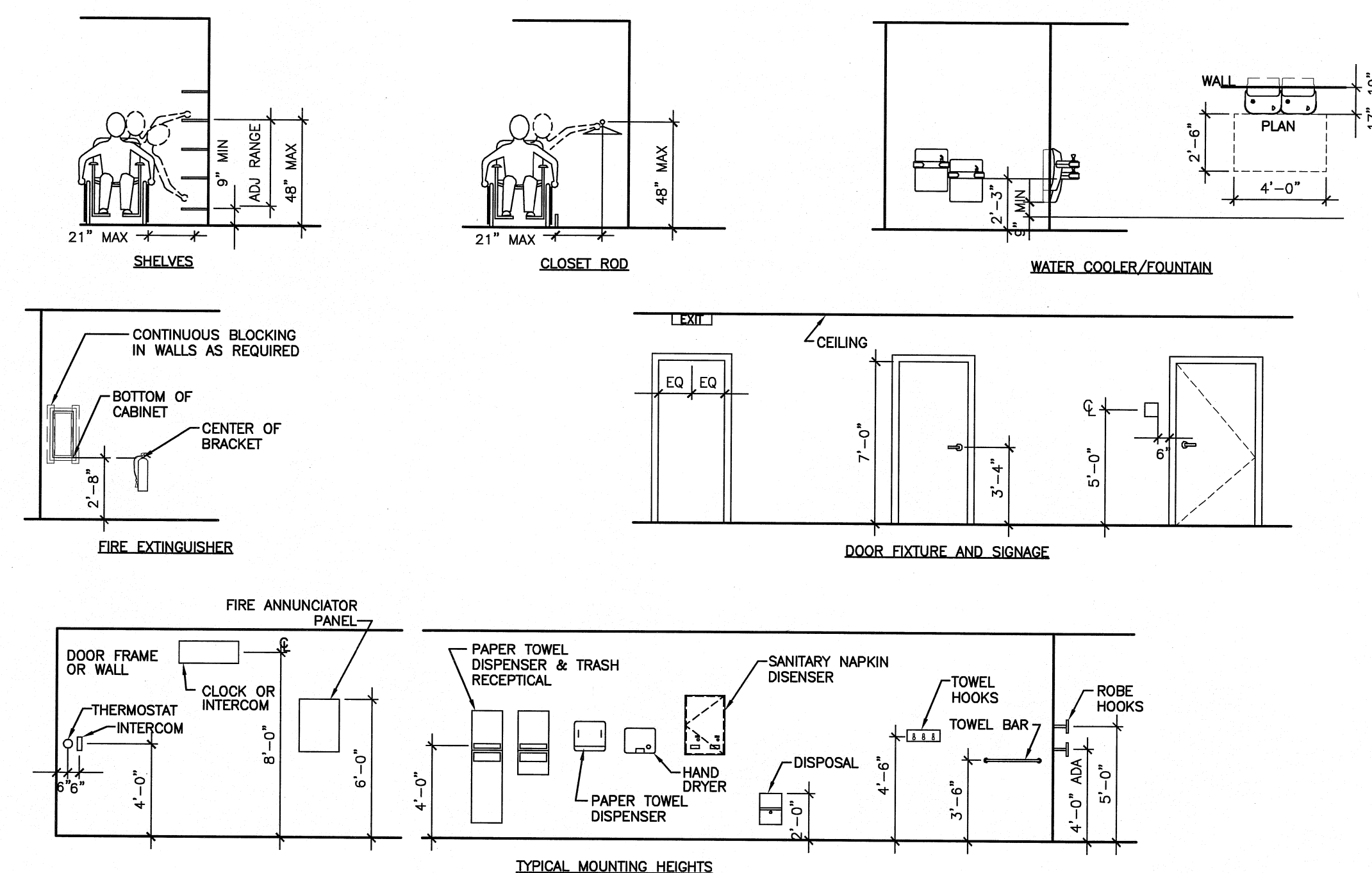


GRID NO.	TITLE
SCALE	REFERENCE SHEET

DRAWING LIST

GENERAL	
GI001	COVER SHEET, LEGEND AND ABBREVIATIONS
ARCHITECTURAL	
AD101	DEMOLITION PLAN
AE101	FLOOR PLAN AND REFLECTED CEILING PLAN
AE201	INTERIOR ELEVATIONS
AE301	BUILDING SECTION
AE501	MILLWORK SECTIONS
AE502	MILLWORK SECTIONS
AE601	INTERIOR FINISHES AND DETAILS
MECHANICAL	
M-001	LEGEND AND ABBREVIATIONS
MD101	HVAC DEMOLITION PLANS
M-101	HVAC PLANS
ELECTRICAL	
E-001	LEGEND AND GENERAL NOTES
E-101	ELECTRICAL PLANS SHEET 1
E-102	ELECTRICAL PLANS SHEET 2

ISSUED FOR
CONSTRUCTION
9-19-08



A10 GENERAL MOUNTING HEIGHTS

NTS

MAINE MEDICAL CENTER
LINAC REPLACEMENT PROJECT
22 BRAMHALL ST PORTLAND, MAINE
ISSUED FOR CONSTRUCTION
9-19-08

REV	DATE	DESCRIPTION
0	9-19-08	ISSUED FOR CONSTRUCTION

GRAPHIC SCALE:
0" 1"

SCALE: N.T.S.
PROJECT MANAGER: CDP
IC/DRAWN BY: MDR
A/E OF RECORD: CDP
CAD FILE: GI001-08134
PROJECT NO: 08134
DATE: 9-19-08

SHEET TITLE:
COVER SHEET, LEGEND AND ABBREVIATIONS

SHEET No. GI001