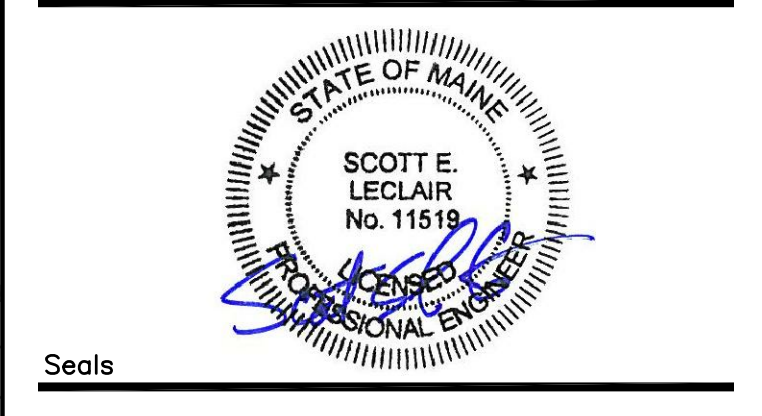


PAVILION "A"

- 1 RETAIN EXISTING MEDICAL GAS OUTLETS (OX, AIR, VAC).
- 2 RELOCATE EXISTING MEDICAL GAS ZONE VALVE BOX AND CONNECTIONS.
- 3 PROVIDE SINK AND FAUCET WITH WATER, WASTE AND VENT PIPING. EXTEND AND CONNECT NEW SINK TO EXISTING WATER, WASTE AND VENT SYSTEMS. PROVIDE STAINLESS STEEL UNDERMOUNT SINK (ELKAY ELUAD1414) IN CORIAN COUNTER TOPS.
- 4 DISCONNECT AND REMOVE EXISTING SHOWER AND ALL RELATED PIPING BACK TO EXISTING BRANCHES. PROVIDE NEW WALL HUNG SINK AND FAUCET AND FLOOR MOUNTED WATER CLOSET WITH FLUSH VALVE WITH WATER, WASTE AND VENT PIPING. EXTEND AND CONNECT NEW SINK AND WATER CLOSET TO EXISTING WATER, WASTE AND VENT SYSTEMS.
- 5 DISCONNECT AND REMOVE MEDICAL GAS OUTLETS (OX, AIR, VAC) AND CAP BACK INTO WALL.
- 6 PROVIDE NEW MEDICAL GAS OUTLETS (OX, VAC & SLIDE) AND PIPING EXTENDED AND CONNECTED TO NEAREST ACTIVE BRANCH SERVING THE AREA.
- 7 DISCONNECT AND REMOVE EXISTING WATER CLOSET AND ALL RELATED PIPING BACK TO WALL AND CAPPED.
- 8 DISCONNECT AND REMOVE EXISTING SHOWER AND ALL RELATED PIPING BACK TO WALL AND CAPPED.
- 9 DISCONNECT AND REMOVE EXISTING WATER CLOSET, SINK, AND ALL RELATED PIPING BACK TO WALL AND CAPPED.
- 10 DISCONNECT AND REMOVE EXISTING SINK AND ALL RELATED PIPING BACK TO WALL AND CAPPED.
- 11 PROVIDE NEW WALL HUNG SINK AND FAUCET WITH WATER, WASTE AND VENT PIPING. EXTEND AND CONNECT NEW SINK AND WATER CLOSET TO NEAREST EXISTING WATER, WASTE AND VENT SYSTEMS.



BECKER
structural engineers, inc.

75 York Street
Portland, ME 04101-4701
info@beckerstructural.com

Tel 207-879-1838
Fax 207-879-1822
www.beckerstructural.com

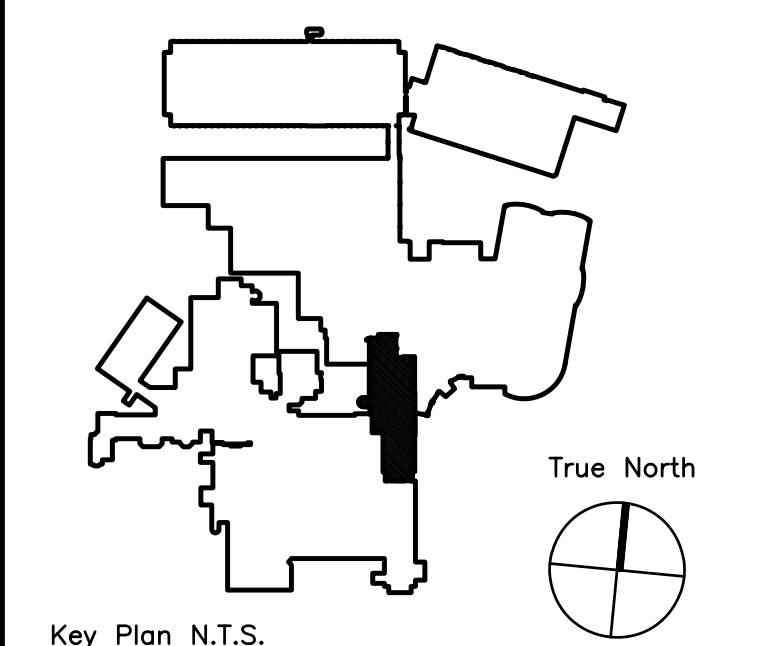
Consultant

MECHANICAL / ELECTRICAL ENGINEERS

92 Montvale Ave, Suite 4100
Snohomish, WA 98290
Tel: 781-481-0210
Fax: 781-481-0203
email: info@f-t.com
www.f-t.com

FITZMEYER & TOCCI
ASSOCIATES, INC.

Project No.: 09018.00



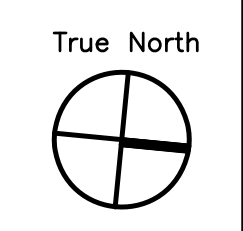
REVISION #	DATE	NO
REVISION #1	01/12/10	2
ADDENDUM #1	12/4/09	1
Revision	Date	No

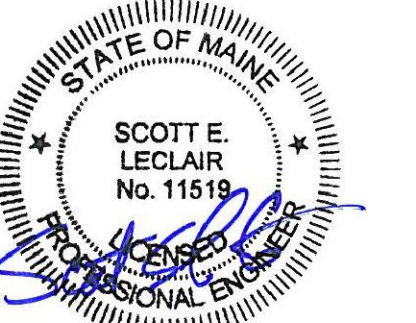
Maine Medical Center
Portland, Maine

MAINE MEDICAL CENTER
PAVILION 6 RENOVATIONS

MorrisSwitzer Project Number: 28034
Date: 11/19/09
Scale: 1/8" = 1'-0"

Sheet Title and Number
SECOND FLOOR
PAVILION "A" INTERIM
OCCUPANCY PLUMBING
PLAN
1P1.0





Seals

BECKER
structural engineers, inc.

75 York Street
Portland, ME 04101-4701
info@beckerstructural.com

Tel 207-879-1838
Fax 207-879-1822
www.beckerstructural.com

Consultant

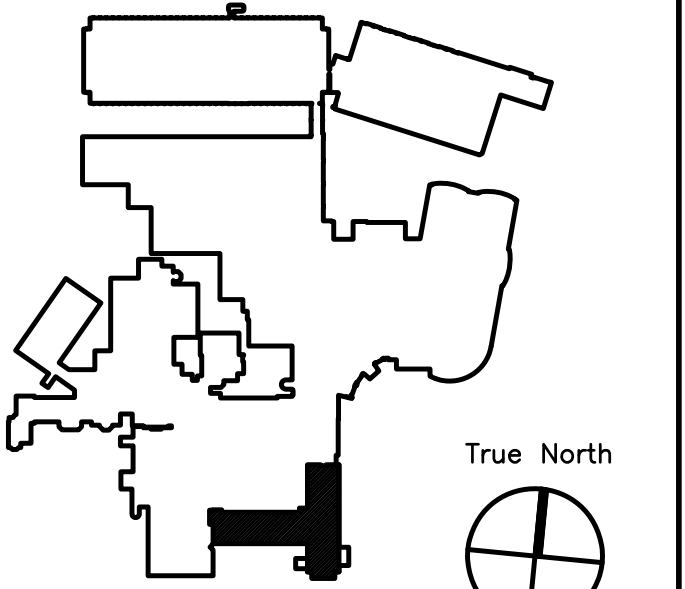
MECHANICAL / ELECTRICAL ENGINEERS

92 Montvale Ave, Suite 4100
Snohomish, WA 98290
Tel: 781-481-0210
Fax: 781-481-0203
email: info@f-t.com
www.f-t.com

FITZMEYER & TOCCI
ASSOCIATES, INC.

Project No.: 09018.00

Consultant



Key Plan N.T.S.

ADDENDUM#	Date	No
ADDENDUM#1	12/4/09	1
Revision	Date	No

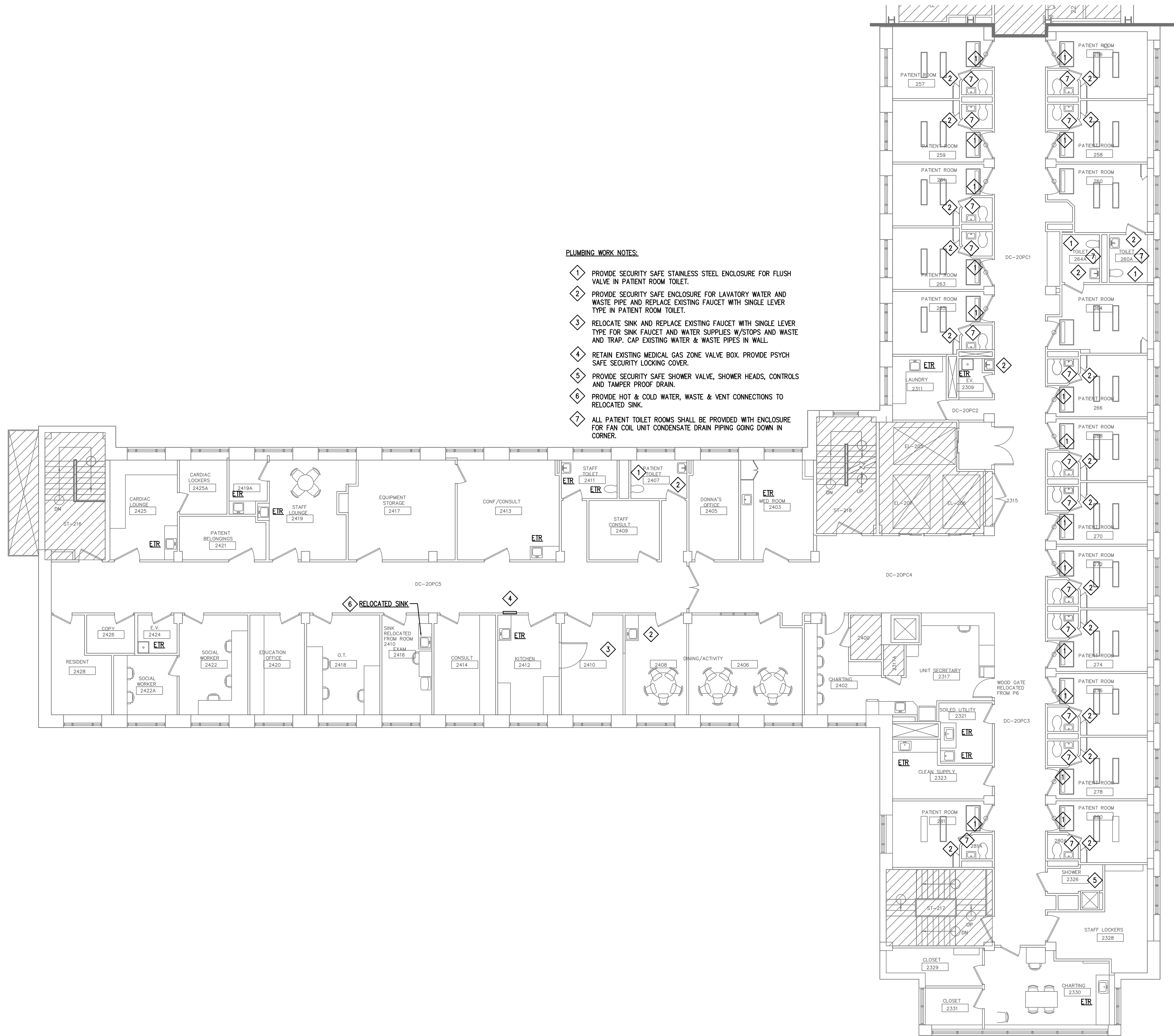
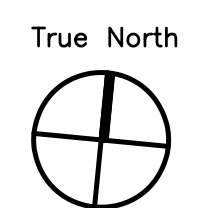


Maine Medical Center
Portland, Maine

MAINE MEDICAL CENTER
PAVILION 6 RENOVATIONS

MorrisSwitzer Project Number 28034
Date 11/19/09
Scale 1/8" = 1'-0"

Sheet Title and Number
SECOND FLOOR
PAVILION "C" & "D"
INTERIM OCCUPANCY
PLUMBING PLAN
2P1.0



- PLUMBING WORK NOTES:**
- 1 PROVIDE SECURITY SAFE STAINLESS STEEL ENCLOSURE FOR FLUSH VALVE IN PATIENT ROOM TOILET.
 - 2 PROVIDE SECURITY SAFE ENCLOSURE FOR LAVATORY WATER AND WASTE PIPE AND REPLACE EXISTING FAUCET WITH SINGLE LEVER TYPE IN PATIENT ROOM TOILET.
 - 3 RELOCATE SINK AND REPLACE EXISTING FAUCET WITH SINGLE LEVER TYPE FOR SINK FAUCET AND WATER SUPPLIES W/STOPS AND WASTE AND TRAP. CAP EXISTING WATER & WASTE PIPES IN WALL.
 - 4 RETAIN EXISTING MEDICAL GAS ZONE VALVE BOX. PROVIDE PSYCH SAFE SECURITY LOCKING COVER.
 - 5 PROVIDE SECURITY SAFE SHOWER VALVE, SHOWER HEADS, CONTROLS AND TAMPER PROOF DRAIN.
 - 6 PROVIDE HOT & COLD WATER, WASTE & VENT CONNECTIONS TO RELOCATED SINK.
 - 7 ALL PATIENT TOILET ROOMS SHALL BE PROVIDED WITH ENCLOSURE FOR FAN COIL UNIT CONDENSATE DRAIN PIPING GOING DOWN IN CORNER.

PAVILION "C" AND "D"

PLUMBING FIXTURE SCHEDULE										
TAG	DESCRIPTION	MAKE	MODEL	WASTE SIZE	VENT SIZE	WATER SUPPLY			FAUCET/ VALVE	ACCESSORIES / REMARKS
						C.W.	H.W.	T.W.		
P-1	WATER CLOSET, HC	CRANE	31083 "SAWALTON"	4"	2"	1-1/4"	----	----	SLOAN-ROYAL 952-1.6 F.A.P. HYDRAULIC FLUSHMETER	PROVIDE WITH CHURCH OPEN FRONT SEAT.
P-1A	WATER CLOSET, HC	ACORN	1684-ADA-W-2-EG-03-FV-SPS	4"	2"	1-1/4"	----	----	ACORN - AIR-TROL 93-FLUSH-VALVE	PROVIDE UNIT LESS SEAT. SEE NOTE 4 BELOW.
P-1B	WATER CLOSET, HC	CRANE	3709 "SAWALTON"	4"	2"	1-1/4"	----	----	SLOAN-ROYAL 111-1.6 GPF SINGLE LEVER HANDLE	PROVIDE WITH CHURCH OPEN FRONT SEAT.
P-2	LAVATORY, HC	ACORN	1652FA-ADA-1-EG-4	1-1/2"	1-1/2"	1/2"	1/2"	1/2"	ACORN - AIR-TROL VALVE 4-H & C	PROVIDE DRAIN, TRAP, SUPPLIES W/STOPS & REMOVABLE ACCESS PANEL. SEE NOTE 4 BELOW.
P-2A	LAVATORY, HC	AMERICAN STD.	0355.012 1UGERNE	1-1/2"	1-1/2"	1/2"	1/2"	1/2"	SLOAN MODEL -SL2711 SINGLE LEVER HANDLE	PROVIDE DRAIN, TRAP, SUPPLIES W/STOPS.
P-3	LAVATORY, HC	F.B.O.	----	1-1/2"	1-1/2"	1/2"	1/2"	1/2"	SLOAN MODEL -SL2711 SINGLE LEVER HANDLE	PROVIDE DRAIN, TRAP, SUPPLIES W/STOPS & REMOVABLE ACCESS PANEL.
P-4	HAND SINK	F.B.O.	----	1-1/2"	1-1/2"	1/2"	1/2"	1/2"	SLOAN MODEL -SL2711 SINGLE LEVER HANDLE	PROVIDE DRAIN, TRAP, SUPPLIES W/STOPS & REMOVABLE ACCESS PANEL.
P-5	EXAM S.S. SINK	ELKAY	ELUAD1414	1-1/2"	1-1/2"	1/2"	1/2"	1/2"	SLOAN MODEL -SL2711 SINGLE LEVER HANDLE	PROVIDE DRAIN, TRAP, SUPPLIES W/STOPS. UNDERMOUNT SINK.
P-6	COUNTER S.S. SINK	ELKAY	BPSPR1215	1-1/2"	1-1/2"	1/2"	1/2"	1/2"	SPEARMAN SET-1800 COMB. EYEWASH/FAUCET	PROVIDE LAWLER MODEL 911E/F THERMOSTATIC MIXING VALVE. SET 95° F. TEPID WATER. SUPPLIES & DRAIN CONNECTIONS.
P-7	COUNTER S.S. SINK	ELKAY	LR-1919	1-1/2"	1-1/2"	1/2"	1/2"	1/2"	SPEARMAN SET-1800 COMB. EYEWASH/FAUCET	PROVIDE LAWLER MODEL 911E/F THERMOSTATIC MIXING VALVE. SET 95° F. TEPID WATER. SUPPLIES & DRAIN CONNECTIONS.
P-8	SHOWER, HC	TILE ENCLOSURE F.B.O.	----	2"	2"	1-1/4"	1/2"	1/2"	ACORN M0532-ES05-1 HEAD LOCATION SEE PLAN	PROVIDE HAND SHOWER, WALL BOX & HOSE BIB, DRAIN, TRAP. ADA COMPLIANT. SEE SPECIFICATION. COORDINATE HEAD LOCATION.
P-9	FLUSH RIM SERVICE SINK	AMERICAN STD.	9512.013	4"	2"	1-1/4"	1/2"	1/2"	SLOAN 117 CHICAGO 910-G-777-19K	PROVIDE WITH RIM GUARD 7832.017 (QTY. 3) AND BEDPAN CLEANER ASSEMBLY & CHICAGO B15VB.
P-10	COUNTER S.S. SINK	ELKAY	LR-1919	1-1/2"	1-1/2"	1/2"	1/2"	1/2"	CHICAGO 786-SWE29CP	PROVIDE DRAIN, TRAP, SUPPLIES W/STOPS.
P-11	COUNTER S.S. SINK DOUBLE BOWL	ELKAY	LRAD-3319	1-1/2"	1-1/2"	1/2"	1/2"	1/2"	ELKAY LKE4100F	PROVIDE DRAIN STRAINER, TRAP, SUPPLIES WITH STOPS.
P-12	CLOTHES WASHER FITTING	SYMMONS	W-602	2"	1-1/2"	1/2"	1/2"	1/2"	----	PROVIDE DRAIN, TRAP, SUPPLIES W/STOPS.
P-13	DRINKING FOUNTAIN, HC	ACORN	1672-1-BP-1-FA	1-1/2"	1-1/2"	1/2"	1/2"	1/2"	PENAL-TROL SINGLE TEMPERATURE VALVE	PROVIDE DRAIN, TRAP, SUPPLIES W/STOPS & REMOVABLE ACCESS PANEL. SEE NOTE 4 BELOW.
WH-1	WALL HYDRANT	J.R. SMITH	5609QT	----	----	3/4"	----	----	----	PROVIDE WATER CONNECTION IN COOLING TOWER.
FD'A	FLOOR DRAIN	J.R. SMITH	2005YA-050TP-U	2", 3"	2"	----	----	----	----	PROVIDE TRAP PRIMER VALVE AND CONNECTION TO FLOOR DRAIN.
FD'B	FLOOR SINK	J.R. SMITH	3040Y-03-FBS-C-U	3"	2"	----	----	----	----	PROVIDE TRAP PRIMER VALVE AND CONNECTION TO FLOOR SINK.
RD'A	ROOF DRAIN	J.R. SMITH	1310 Y-R-C	3", 4"	----	----	----	----	----	----

NOTES: 1. PROVIDE BALL VALVE SHUT OFFS AT ALL FIXTURE BRANCH LINE TAKE-OFFS FROM MAINS AND RISERS.
 2. ALL FIXTURES TO BE INSTALLED IN ACCORDANCE WITH ADA REGULATIONS.
 3. COORDINATE ALL FIXTURE POWER REQUIREMENTS WITH THE ELECTRICAL CONTRACTOR.
 4. FIXTURES SHALL BE PROVIDED WITH COLOR OPTION TO BE SELECTED BY THE ARCHITECT.

VALVE LEGEND	
	GV GATE VALVE
	GLV GLOBE VALVE
	BV BALL VALVE
	PV GAS PLUG VALVE
	DV DRAIN VALVE
	SCV SWING CHECK VALVE
	BLV BALANCE VALVE
	PRV PRESSURE REDUCING VALVE
	RV RELIEF VALVE
	UNION
	PLS PIPE LINE STRAINER
	THERM THERMOMETER
	PG PRESSURE GAUGE
	AN PIPE ANCHOR
	EC EXPANSION COMPENSATOR
	PFC PIPE FLEXIBLE CONNECTION
	SCV SWING CHECK VALVE
	GCV GAS CYLINDER SHUTOFF VALVE

PIPING LEGEND	
	CW COLD WATER
	NPW NON-POTABLE COLD WATER
	HW HOT WATER
	HWC HOT WATER CIRCULATION
	TW TEMPERED WATER
	DIW DEIONIZED WATER
	RO REVERSE OSMOSIS
	G GAS
	OX OXYGEN
	MA MEDICAL COMPRESSED AIR
	MV MEDICAL VACUUM
	AE ANESTHESIA EVACUATION
	TP TRAP PRIMER
	SW SPECIAL WASTE
	SW SPECIAL WASTE - BELOW FLOOR
	SV SPECIAL VENT
	SV SPECIAL VENT - BELOW FLOOR
	NO NITROUS OXIDE
	NIT NITROGEN
	IA INSTRUMENT AIR
	CO CARBON DIOXIDE
	S. OR W. SANITARY OR WASTE
	V. VENT
	SD STORM DRAIN
	V. VENT - BELOW FLOOR
	S. OR W. SANITARY OR WASTE - BELOW FLOOR
	SD STORM DRAIN - BELOW FLOOR
	IW INDIRECT WASTE
	FM FORCED MAIN
	RUN-OUT OFF BOTTOM
	RUN-OUT OFF TOP
	PG PIPE GUIDE
	PA PIPE ANCHOR
	SB SLEEVE BEAM
	PIPE UP
	PIPE DOWN
	CAP ON END OF PIPE
	PIPE BREAK
	C.T.E. CONNECT TO EXISTING
	W. & T. WASTE AND TRAP
	SW. & T. SPECIAL WASTE AND TRAP
	C.O. CLEANOUT
	D.C.O. DANDY CLEANOUT
	F.C.O. FLOOR CLEANOUT
	W.C.O. WALL CLEANOUT
	W.H. WALL HYDRANT
	DIRECTION OF FLOW
	DIRECTION OF PITCH DOWN
	PS MEDICAL GAS PRESSURE SWITCH
	FD FLOOR DRAIN
	RD ROOF DRAIN
	AD AREA DRAIN

ABBREVIATIONS

AC	AIR CHAMBER
AVTR	ACID VENT THROUGH ROOF
B.F.P.	BACK FLOW PREVENTER
CI	CAST IRON
CD	CEILING DIFFUSER
CFH	CUBIC FEET PER HOUR
C.L.D.I.	CEMENT LINED DUCTILE IRON
CONTR	CONTRACTOR
CWR	COLD WATER RISER
DN	DOWN
D. & R.	DISCONNECT AND REMOVE
DWG	DRAWING
EA.	EACH
E.T.R.	EXISTING TO REMAIN
EAT	ENTERING AIR TEMPERATURE
EX.	EXISTING
F.B.O.C.	FURNISHED BY OTHER CONTRACTOR
FT	FEET
GAL	GALLONS
GC	GENERAL CONTRACTOR
GPM	GALLONS PER MINUTE
HP	HORSE POWER
HVAC	HEATING, VENTILATION AND AIR CONDITIONING
HWR	HOT WATER RISER
INV.	INVERT
IN	INCHES
KW	KILOWATTS
NIC	NOT IN CONTRACT
NTS	NOT TO SCALE
O.E.D.&T.	OPEN END DRAIN AND TRAP
O.S.&Y.	OUTSIDE SCREW AND YOKE
PC	PLUMBING CONTRACTOR
PSI	POUNDS PER SQUARE INCH
RM	ROOM
SA	SHOCK ABSORBER
SF	SQUARE FEET
SPD	SPEED
SS	STAINLESS STEEL
TYP	TYPICAL
WS	WASTE STACK
VB	VACUUM BREAKER
V.T.R.	VENT THROUGH ROOF
V.C.	VITRIFIED CLAY
W UP&T	WASTE UP AND TRAP

GENERAL NOTES

- PIPE ROUTING IS SHOWN DIAGRAMMATICALLY ON PLUMBING DRAWINGS AND SHALL BE ADJUSTED FOR ARCHITECTURAL, STRUCTURAL, MECHANICAL AND ELECTRICAL CLEARANCES AND LIMITATIONS AND FOR EQUIPMENT SELECTION. FURNISH AND INSTALL ALL ELEMENTS REQUIRED TO COMPLETE INTENDED PIPING SYSTEMS WHETHER OR NOT THESE ELEMENTS ARE SPECIFICALLY SHOWN ON DRAWINGS OR CALLED FOR IN SPECIFICATIONS.
- CONSULT ALL DRAWINGS, NOTE ARCHITECTURAL DETAILS AND ALL CONDITIONS THAT MAY AFFECT THE WORK AND CARE FOR SAME, WHILE EXECUTING THE WORK UNDER THIS SECTION. COOPERATE AND COORDINATE WITH THE ARCHITECT, ALL OTHER TRADES, BUILDING MANAGEMENT, AND THE OWNER.
- ALL WORK SHALL CONFORM TO ALL APPLICABLE FEDERAL, STATE, AND LOCAL CODES AND REGULATIONS.
- IN EVENT OF CONFLICT BETWEEN OR AMONG SPECIFIED REQUIREMENTS AND PERTINENT CODES OR REGULATIONS, MORE STRINGENT REQUIREMENTS SHALL GOVERN.
- TAKE ALL MEASURES REQUIRED TO PROTECT OWNER'S PROPERTY AND EQUIPMENT DURING COURSE OF WORK. SHOULD DAMAGE TO OWNER'S PROPERTY OR EQUIPMENT OCCUR, REPAIR DAMAGE PROMPTLY AT NO COST TO OWNER.
- INSTALL ALL EQUIPMENT AND MATERIALS IN STRICT CONFORMANCE WITH EQUIPMENT AND MATERIALS MANUFACTURERS' WRITTEN RECOMMENDATIONS.
- LOCATIONS, PLUMBING MOUNTING HEIGHTS, AND DETAILS SHOWN ON ARCHITECTURAL DRAWINGS TAKE PRECEDENCE OVER SAME SHOWN ON PLUMBING DRAWINGS AND DESCRIBED IN SECTIONS OF THE SPECIFICATIONS. WHEN ARCHITECTURAL DRAWINGS DO NOT SHOW PRECISE LOCATIONS OF DEVICES OR EQUIPMENT, LOCATE AS DIRECTED BY THE ARCHITECT.
- LOCATE PIPES TO FALL WITHIN PARTITIONS, WALLS, OR ROOF CAVITIES AND TO PRECLUDE FURRING, OTHER THAN THAT SHOWN ON ARCHITECTURAL DRAWINGS.
- ALL PLUMBING EQUIPMENT, VALVES, ETC. SHALL BE INSTALLED WITH CLEARANCE FOR SERVICING AS RECOMMENDED BY THE MANUFACTURER.

DRAWING NOTES

	DRAWING WORK NOTE
	DRAWING WORK NOTE
	DRAWING WORK NOTE
	CONNECT TO EXISTING
	CAP EXISTING
	LIMIT OF DEMOLITION
	DRAWING REVISION DESIGNATION
	REVISION CLOUD

PLUMBING EQUIPMENT COORDINATION

- PLUMBING CONTRACTOR SHALL REFER TO THE ARCHITECTURAL, FIRE PROTECTION, MECHANICAL, AND ELECTRICAL DRAWINGS AND SPECIFICATIONS FOR LOCATIONS AND QUANTITIES OF EQUIPMENT RELEASED TO EACH TRADE.

MEDICAL GAS LEGEND

	VB VALVE BOX (RECESSED)
	AAP AREA ALARM PANEL
	NCP NITROGEN CONTROL PANEL
	IACP INSTRUMENT AIR CONTROL PANEL
	OXYGEN OUTLET DISS TYPE
	VACUUM INLET DISS TYPE
	N2O OUTLET DISS TYPE
	NITROGEN OUTLET DISS TYPE
	WAGD INLET DISS TYPE
	AIR OUTLET DISS TYPE
	OXYGEN OUTLET QC TYPE
	VACUUM INLET QC TYPE
	N2O OUTLET QC TYPE
	WAGD INLET QC TYPE
	AIR OUTLET QC TYPE
	CO2 OUTLET DISS TYPE
	INSTRUMENT AIR OUTLET DISS TYPE
	VACUUM BOTTLE SLIDE
	AAP AREA ALARM PANEL
	MAP MASTER ALARM PANEL
	VB VALVE BOX (RECESSED)
	IN LINE BALL VALVE
	LOCKED OPEN IN LINE VALVE
	LOCKED CLOSED IN LINE VALVE
	VALVE FOR FUTURE
	PRESSURE VACUUM SENSOR

PLUMBING DRAWING LIST

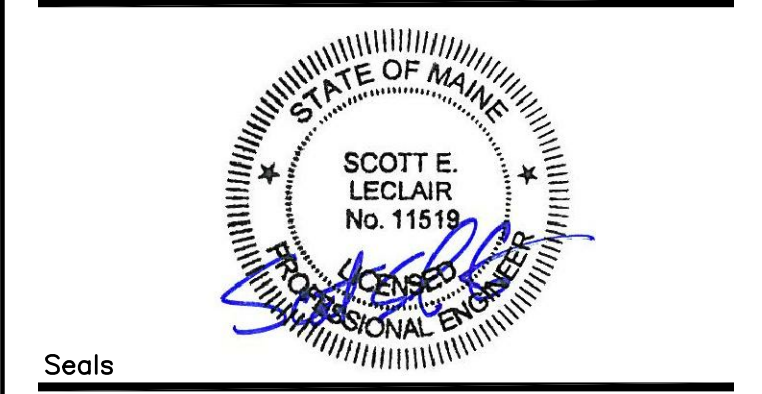
DRAWING NO.	DRAWING TITLE
1P1.0	PLUMBING PAVILION "A" INTERIM OCCUPANCY PLAN
2P1.0	PLUMBING PAVILION "C" AND "D" INTERIM OCCUPANCY PLAN
3P0.0	PLUMBING LEGEND AND NOTES
3P1.0	PLUMBING DEMOLITION FLOOR PLAN
3P2.0	PLUMBING NEW WORK UNDER FLOOR PLAN
3P2.1	PLUMBING NEW WORK FLOOR PLAN
3P2.2	PLUMBING NEW WORK ROOF PLAN
3P2.3	PLUMBING NEW WORK MEDICAL GAS PLAN
3P3.0	PLUMBING SCHEDULE AND DETAILS
3P3.1	PLUMBING DETAILS

MorrisSwitzer
Environments for Health

Williston, Vermont
Boston, Massachusetts
Portland, Maine

One Dana Street
Portland, ME 04101
t 207.773.8841
f 207.773.8840

© 2009 MorrisSwitzer morriswitzer.com

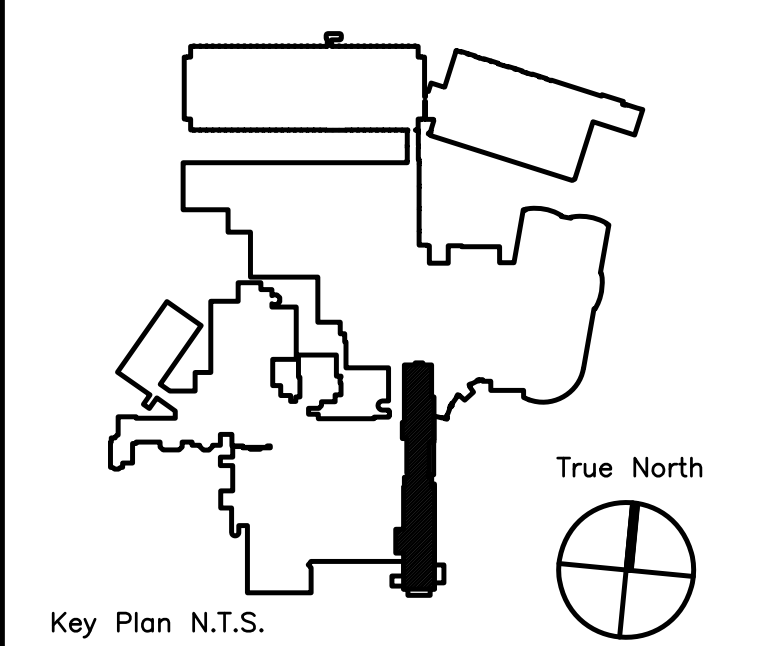


BECKER
structural engineers, inc.

75 York Street
Portland, ME 04101-4701
info@beckerstructural.com

Tel 207-879-1838
Fax 207-879-1822
www.beckerstructural.com

MECHANICAL / ELECTRICAL ENGINEERS
92 Montvale Ave, Suite 4100
Saco, ME 04158
Tel: 781-481-0210
Fax: 781-481-0203
email: info@f-t.com
www.f-t.com
Project No.: 09018.00



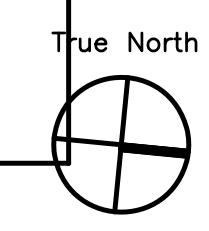
ADDENDUM#	Date	No
1	12/4/09	1
Revision	Date	No

Maine Medical Center
Portland, Maine

MAINE MEDICAL CENTER

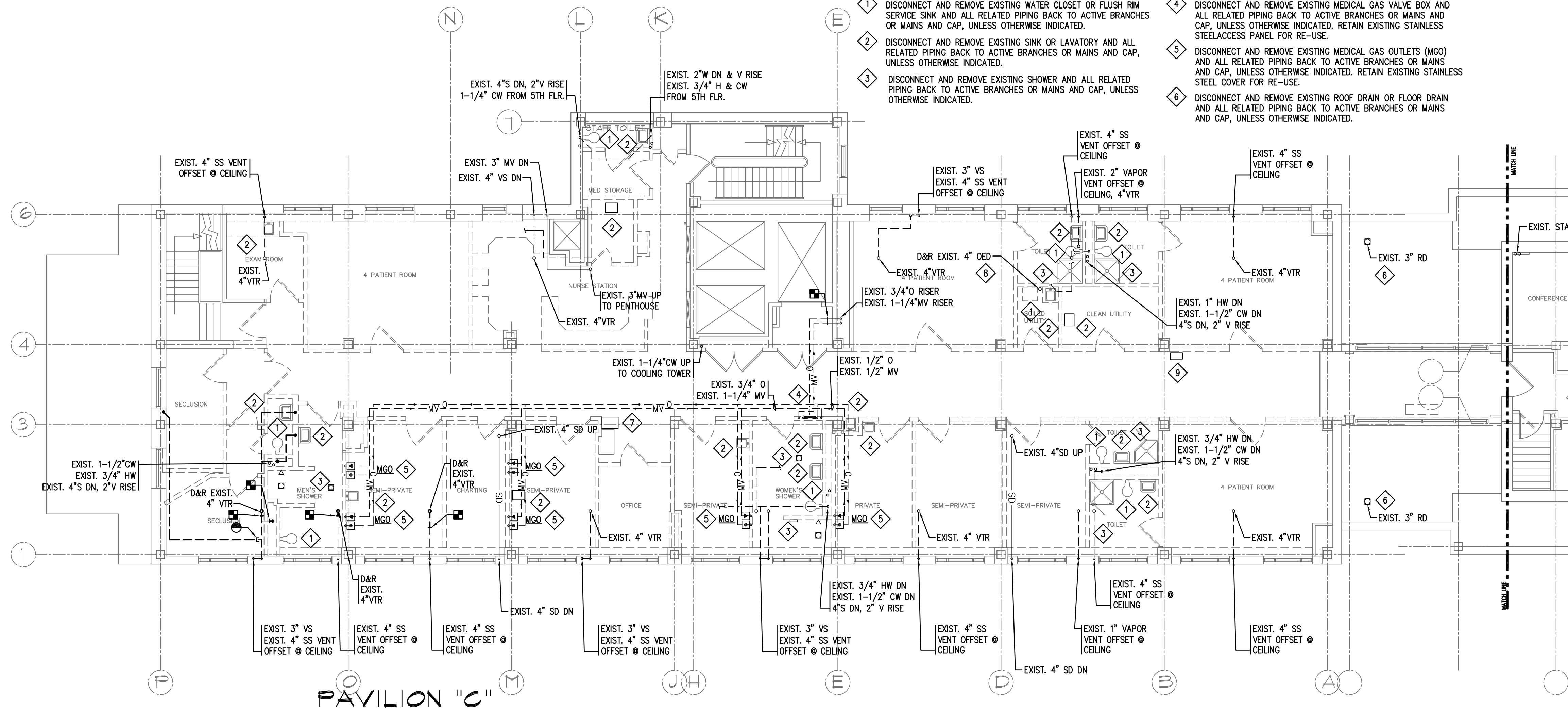
PAVILION 6 RENOVATIONS

MorrisSwitzer Project Number 28034
Date 11/19/09
Scale NOT TO SCALE
Sheet Title and Number
SIXTH FLOOR PAVILIONS
"A" & "C" PLUMBING
LEGEND, NOTES AND
SCHEDULES
3P0.0

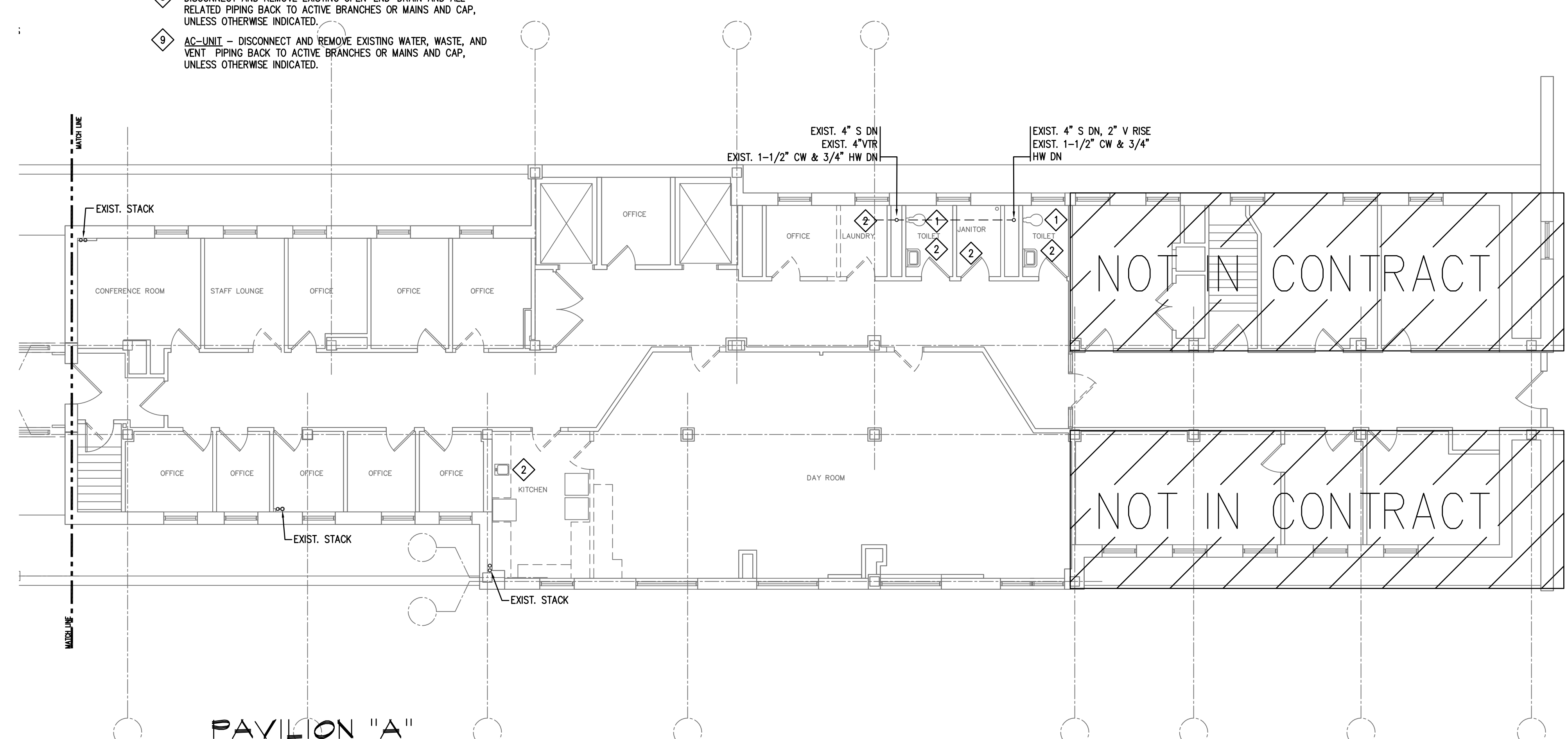


PLUMBING DEMOLITION WORK NOTES:

- 1 DISCONNECT AND REMOVE EXISTING WATER CLOSET OR FLUSH RIM SERVICE SINK AND ALL RELATED PIPING BACK TO ACTIVE BRANCHES OR MAINS AND CAP, UNLESS OTHERWISE INDICATED.
- 2 DISCONNECT AND REMOVE EXISTING SINK OR LAVATORY AND ALL RELATED PIPING BACK TO ACTIVE BRANCHES OR MAINS AND CAP, UNLESS OTHERWISE INDICATED.
- 3 DISCONNECT AND REMOVE EXISTING SHOWER AND ALL RELATED PIPING BACK TO ACTIVE BRANCHES OR MAINS AND CAP, UNLESS OTHERWISE INDICATED.
- 4 DISCONNECT AND REMOVE EXISTING MEDICAL GAS VALVE BOX AND ALL RELATED PIPING BACK TO ACTIVE BRANCHES OR MAINS AND CAP, UNLESS OTHERWISE INDICATED. RETAIN EXISTING STAINLESS STEEL ACCESS PANEL FOR RE-USE.
- 5 DISCONNECT AND REMOVE EXISTING MEDICAL GAS OUTLETS (MGO) AND ALL RELATED PIPING BACK TO ACTIVE BRANCHES OR MAINS AND CAP, UNLESS OTHERWISE INDICATED. RETAIN EXISTING STAINLESS STEEL COVER FOR RE-USE.
- 6 DISCONNECT AND REMOVE EXISTING ROOF DRAIN OR FLOOR DRAIN AND ALL RELATED PIPING BACK TO ACTIVE BRANCHES OR MAINS AND CAP, UNLESS OTHERWISE INDICATED.



- 7 DISCONNECT AND REMOVE EXISTING ELECTRIC WATER COOLER AND ALL RELATED PIPING BACK TO ACTIVE BRANCHES OR MAINS AND CAP, UNLESS OTHERWISE INDICATED.
- 8 DISCONNECT AND REMOVE EXISTING OPEN-END-DRAIN AND ALL RELATED PIPING BACK TO ACTIVE BRANCHES OR MAINS AND CAP, UNLESS OTHERWISE INDICATED.
- 9 AC-UNIT - DISCONNECT AND REMOVE EXISTING WATER, WASTE, AND VENT PIPING BACK TO ACTIVE BRANCHES OR MAINS AND CAP, UNLESS OTHERWISE INDICATED.



Seals

BECKER
structural engineers, inc.

75 York Street
Portland, ME 04101-4701
info@beckerstructural.com

Tel 207-879-1838
Fax 207-879-1822
www.beckerstructural.com

Consultant

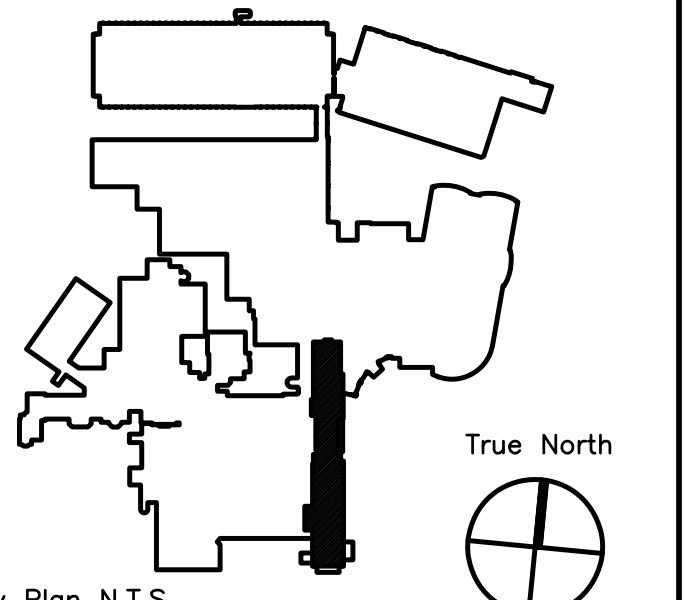
MECHANICAL / ELECTRICAL ENGINEERS

92 Montvale Ave, Suite 4100
Snohomish, WA 98290
Tel: 781-481-0210
Fax: 781-481-0203
email: info@f-t.com
www.f-t.com

FITZMEYER & TOCCI
ASSOCIATES, INC.

Project No.: 09018.00

Consultant



Key Plan N.T.S.

ADDENDUM#	Date	No
ADDENDUM#1	12/4/09	1
Revision	Date	No



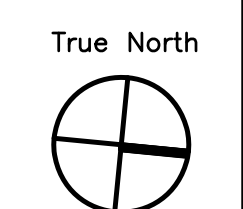
Maine Medical Center
Portland, Maine

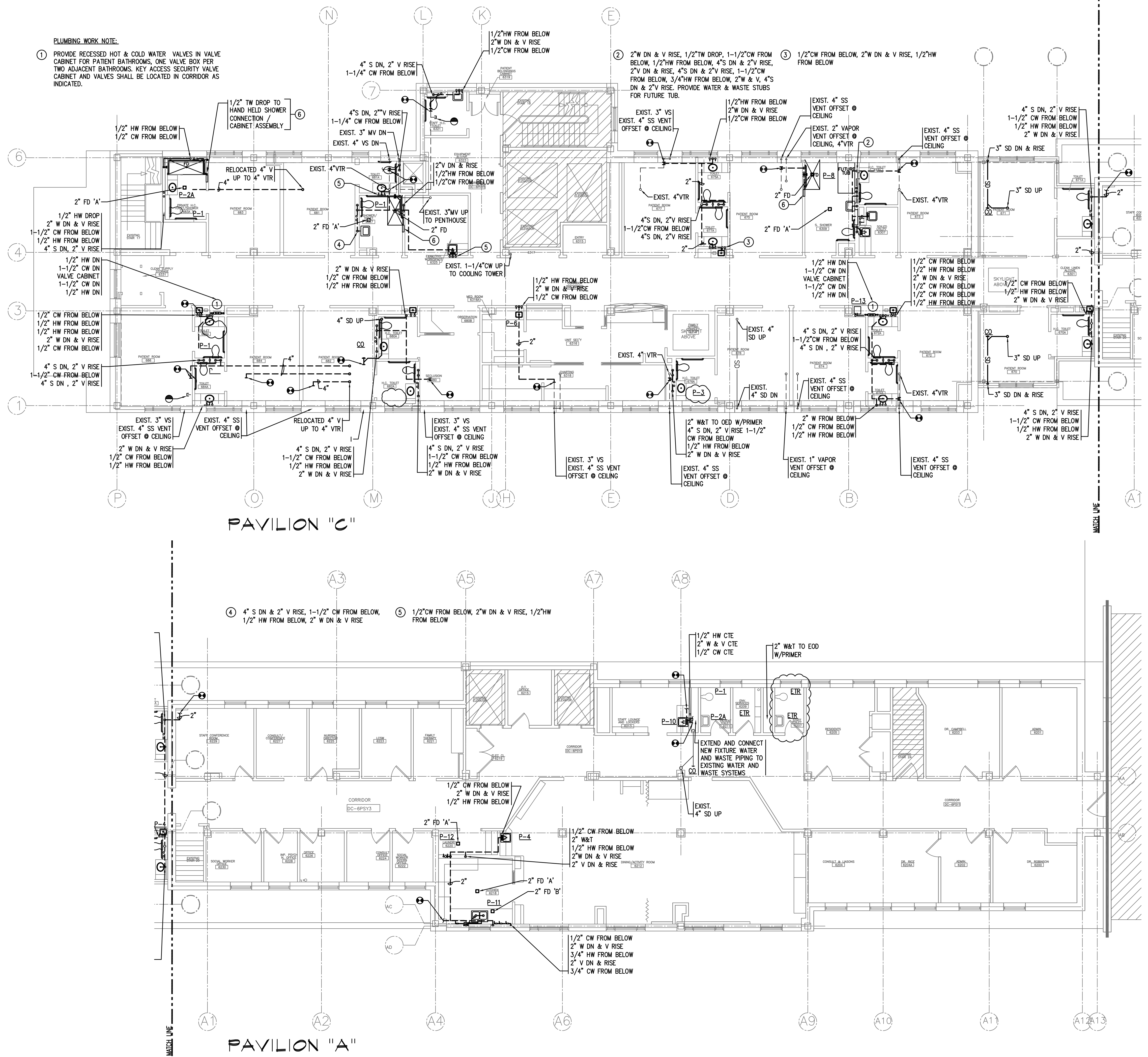
MAINE MEDICAL CENTER
PAVILION 6 RENOVATIONS

MorrisSwitzer Project Number 28034
Date 11/19/09
Scale 1/8" = 1'-0"
Sheet Title and Number

SIXTH FLOOR PAVILIONS "A" & "C" PLUMBING DEMOLITION PLAN

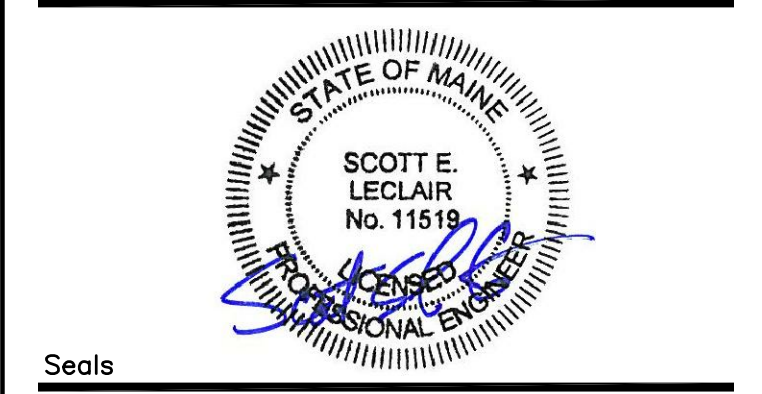
3P1.0





PLUMBING WORK NOTE:

1 PROVIDE RECESSED HOT & COLD WATER VALVES IN VALVE CABINET FOR PATIENT BATHROOMS. ONE VALVE BOX PER TWO ADJACENT BATHROOMS. KEY ACCESS SECURITY VALVE CABINET AND VALVES SHALL BE LOCATED IN CORRIDOR AS INDICATED.



BECKER
structural engineers, inc.

75 York Street
Portland, ME 04101-4701
info@beckerstructural.com

Tel 207-879-1838
Fax 207-879-1822
www.beckerstructural.com

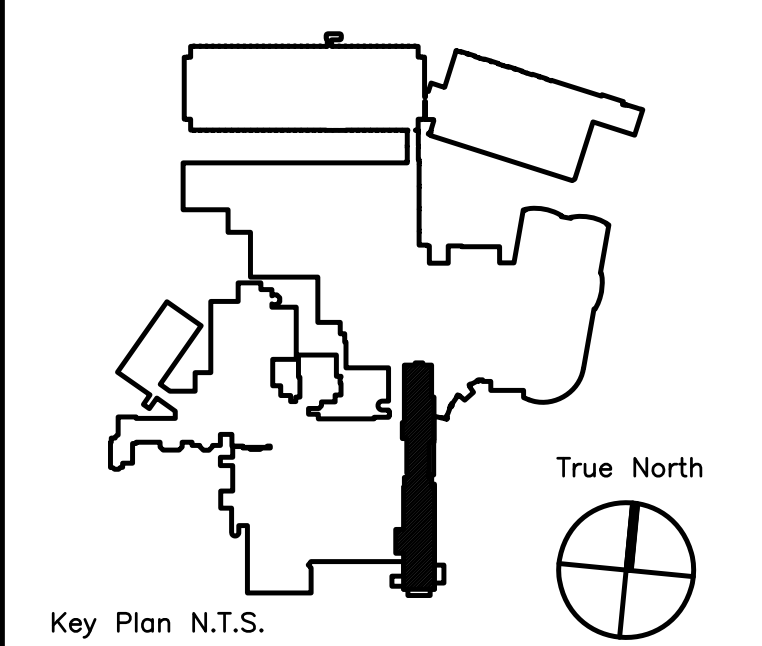
Consultant

MECHANICAL / ELECTRICAL ENGINEERS

92 Montvale Ave, Suite 4100
Saco, Maine, ME 04216
Tel: 781-481-0210
Fax: 781-481-0203
email: info@f-t.com
www.f-t.com

FITZMEYER & TOCCI
ASSOCIATES, INC.

Project No.: 09018.00



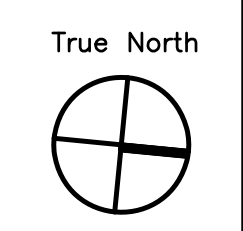
ADDENDUM#	Date	No
1	12/4/09	1

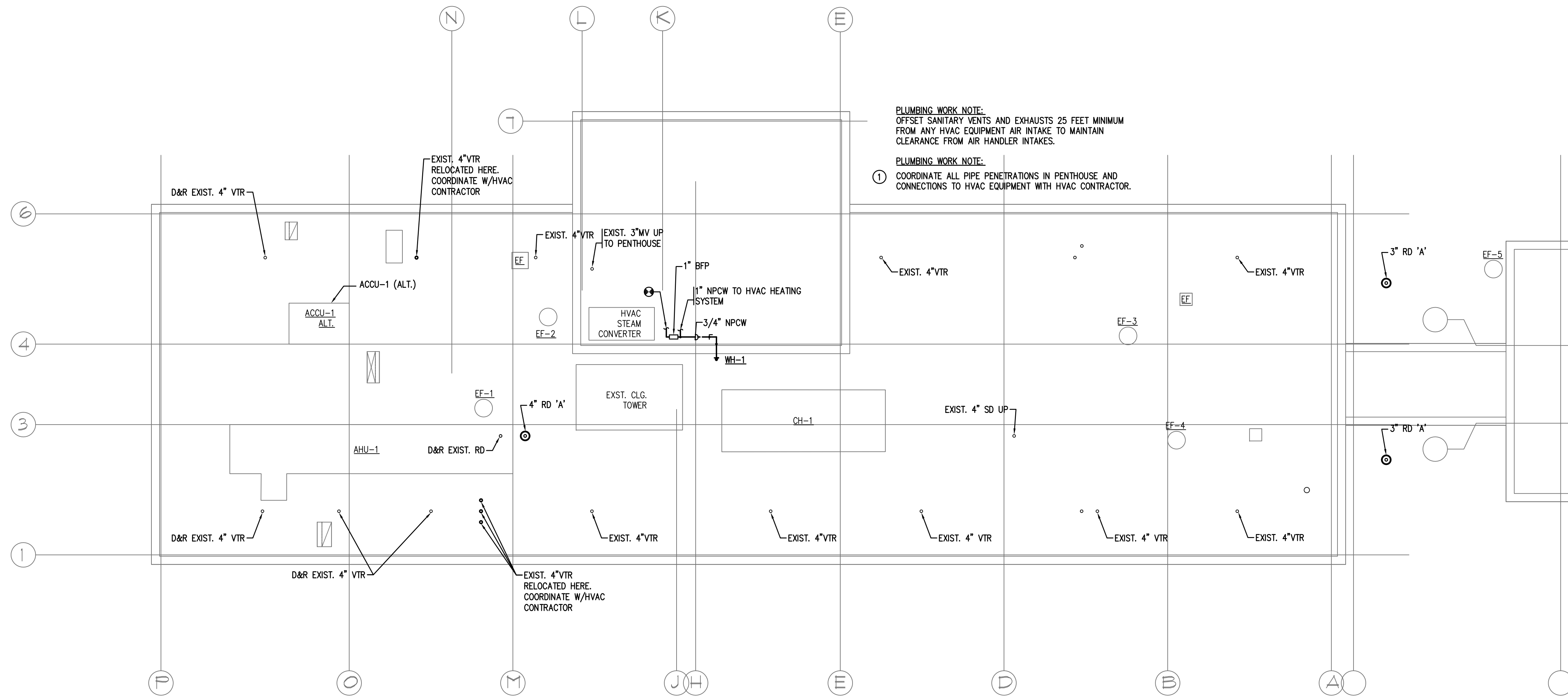


MAINE MEDICAL CENTER
PAVILION 6 RENOVATIONS

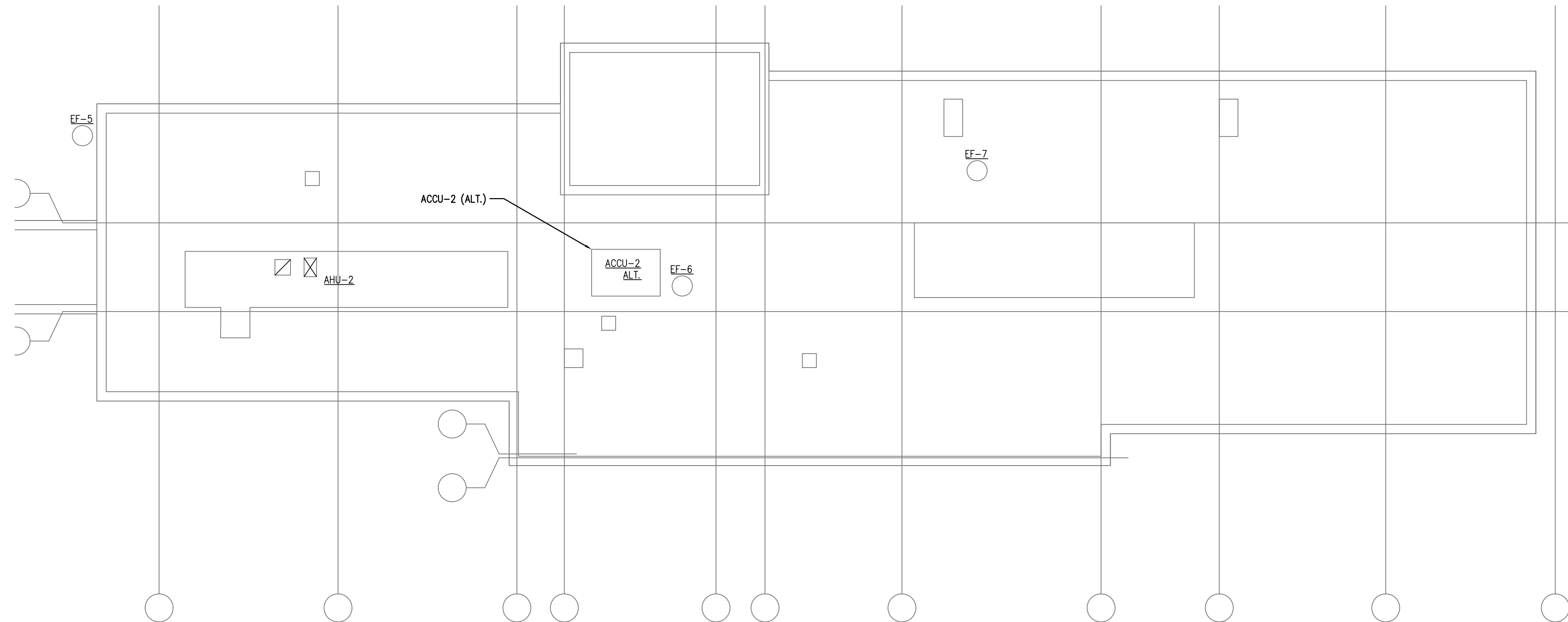
MorrisSwitzer Project Number 28034
Date 11/19/09
Scale 1/8" = 1'-0"
Sheet Title and Number

**SIXTH FLOOR PAVILIONS
"A" & "C" PLUMBING NEW
WORK PLAN
3P2.1**





PAVILION "C"



PAVILION "A"

PLUMBING WORK NOTE:
 OFFSET SANITARY VENTS AND EXHAUSTS 25 FEET MINIMUM FROM ANY HVAC EQUIPMENT AIR INTAKE TO MAINTAIN CLEARANCE FROM AIR HANDLER INTAKES.

PLUMBING WORK NOTE:
 ① COORDINATE ALL PIPE PENETRATIONS IN PENTHOUSE AND CONNECTIONS TO HVAC EQUIPMENT WITH HVAC CONTRACTOR.



BECKER
 structural engineers, inc.

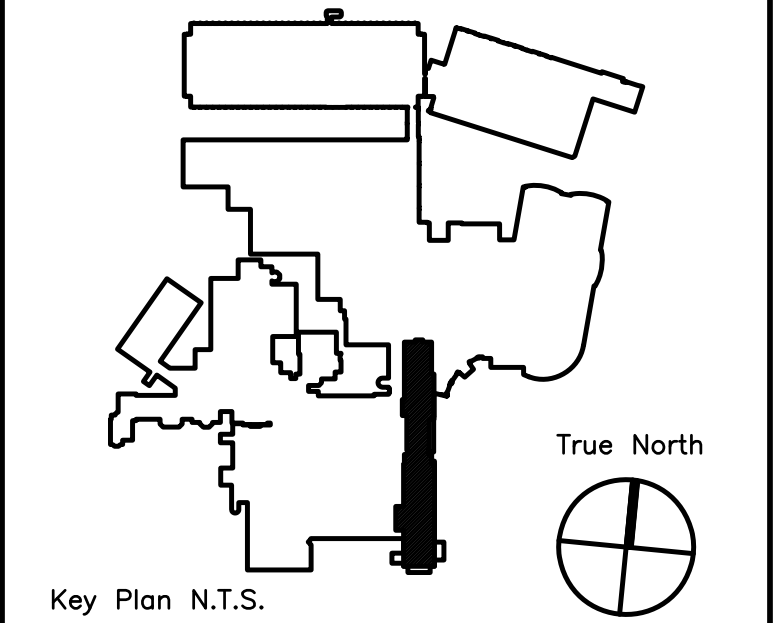
75 York Street
 Portland, ME 04101-4701
 info@beckerstructural.com

Tel 207-879-1838
 Fax 207-879-1822
 www.beckerstructural.com

Consultant

FITZMEYER & TOCCI
 ASSOCIATES, INC.

MECHANICAL / ELECTRICAL ENGINEERS
 92 Montvale Ave, Suite 4100
 Southam, MA 02180
 Tel: 781-481-0210
 Fax: 781-481-0203
 email: info@f-t.com
 www.f-t.com
 Project No.: 09018.00



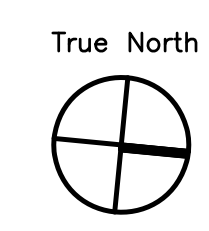
ADDENDUM#	Date	No
ADDENDUM#1	12/4/09	1
Revision	Date	No

Maine Medical Center
 Portland, Maine

MAINE MEDICAL CENTER
 PAVILION 6 RENOVATIONS

MorrisSwitzer Project Number 28034
 Date 11/19/09
 Scale 1/8" = 1'-0"
 Sheet Title and Number

SIXTH FLOOR PAVILIONS "A" & "C" PLUMBING NEW WORK ROOF PLAN
3P2.2



MEDICAL GAS ALARM PANEL SCHEDULE																	
TAG	MFG	MODEL	LOCATION(S)	MEDICAL GAS ALARM CONTACTS								ELECTRIC		REMARKS			
				CO ₂	OX	MV	MA	N ₂ O	AE	NIT	IA	HZ	PH		VOLTS		
AAP-1	BEACONMEDAES	6-M2R-OVBB	UNIT SEC'Y 6316	0	1	1	0	0	0	0	0	0	0	60	1	120	ALARM PANEL WITH REMOTE PRESSURE SENSORS.

NOTES:
24 VOLT WIRING BETWEEN PRESSURE SENSORS AND ALARM PANELS SHALL BE FURNISHED AND INSTALLED BY THE PLUMBING CONTRACTOR.

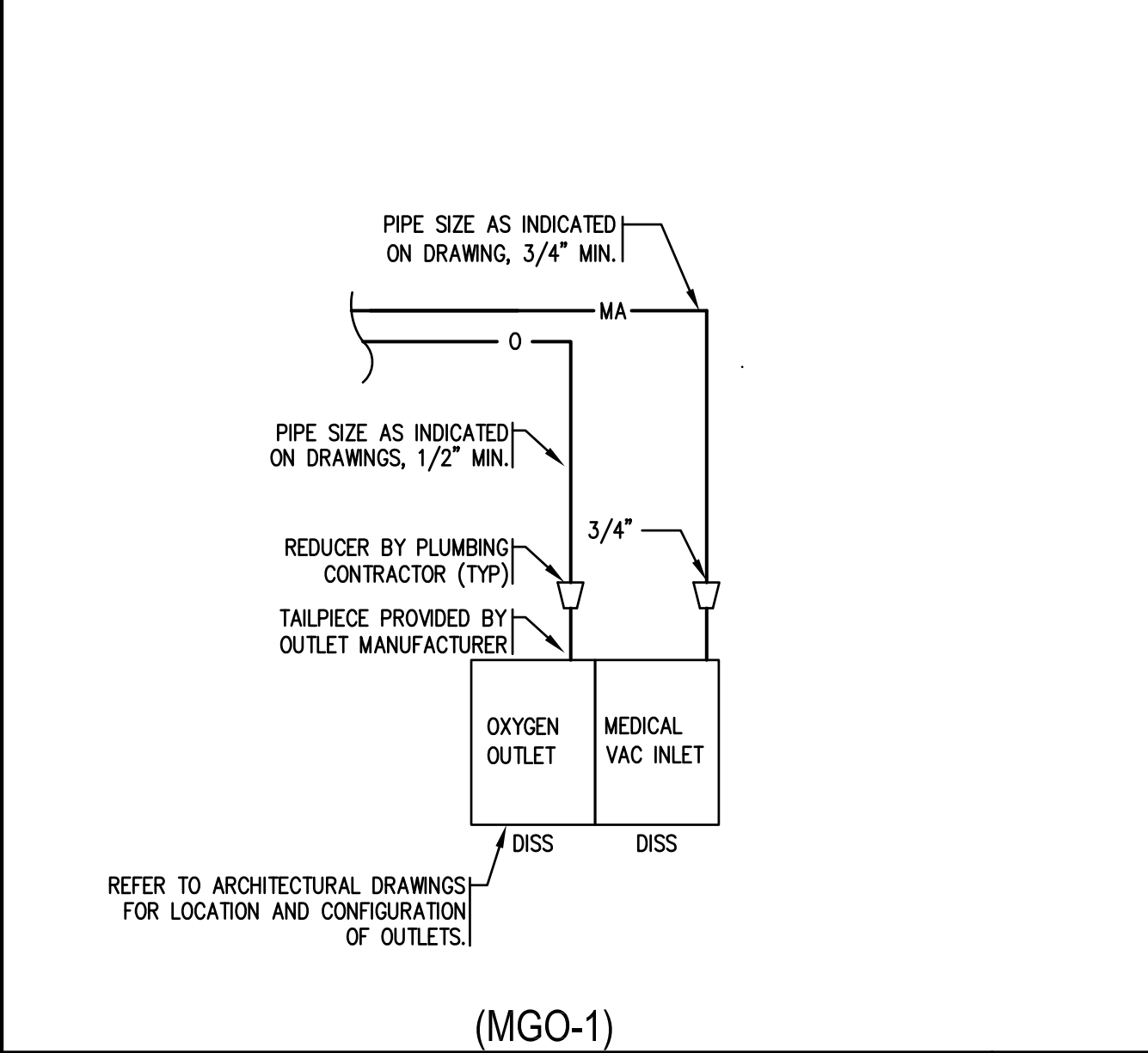
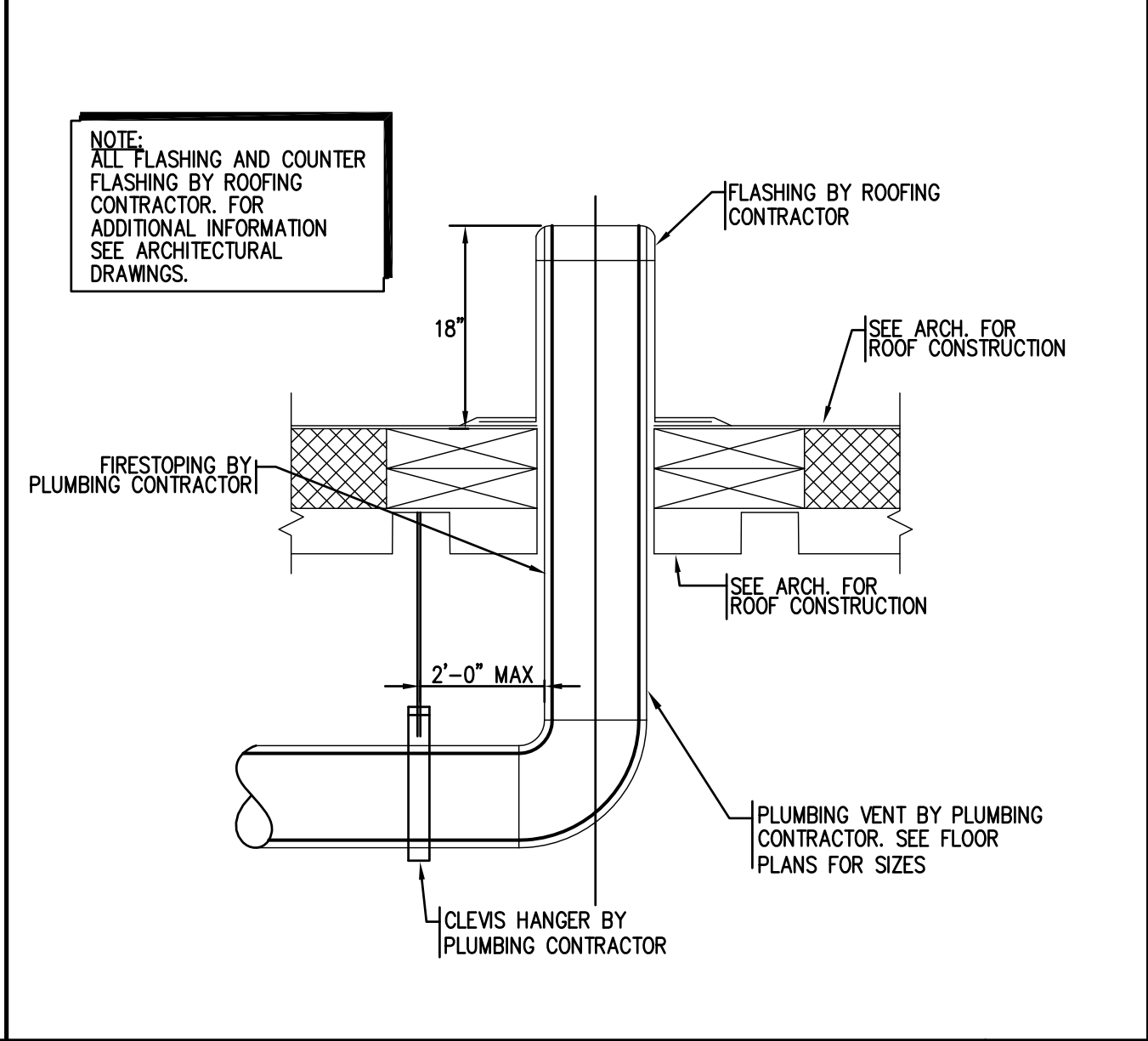
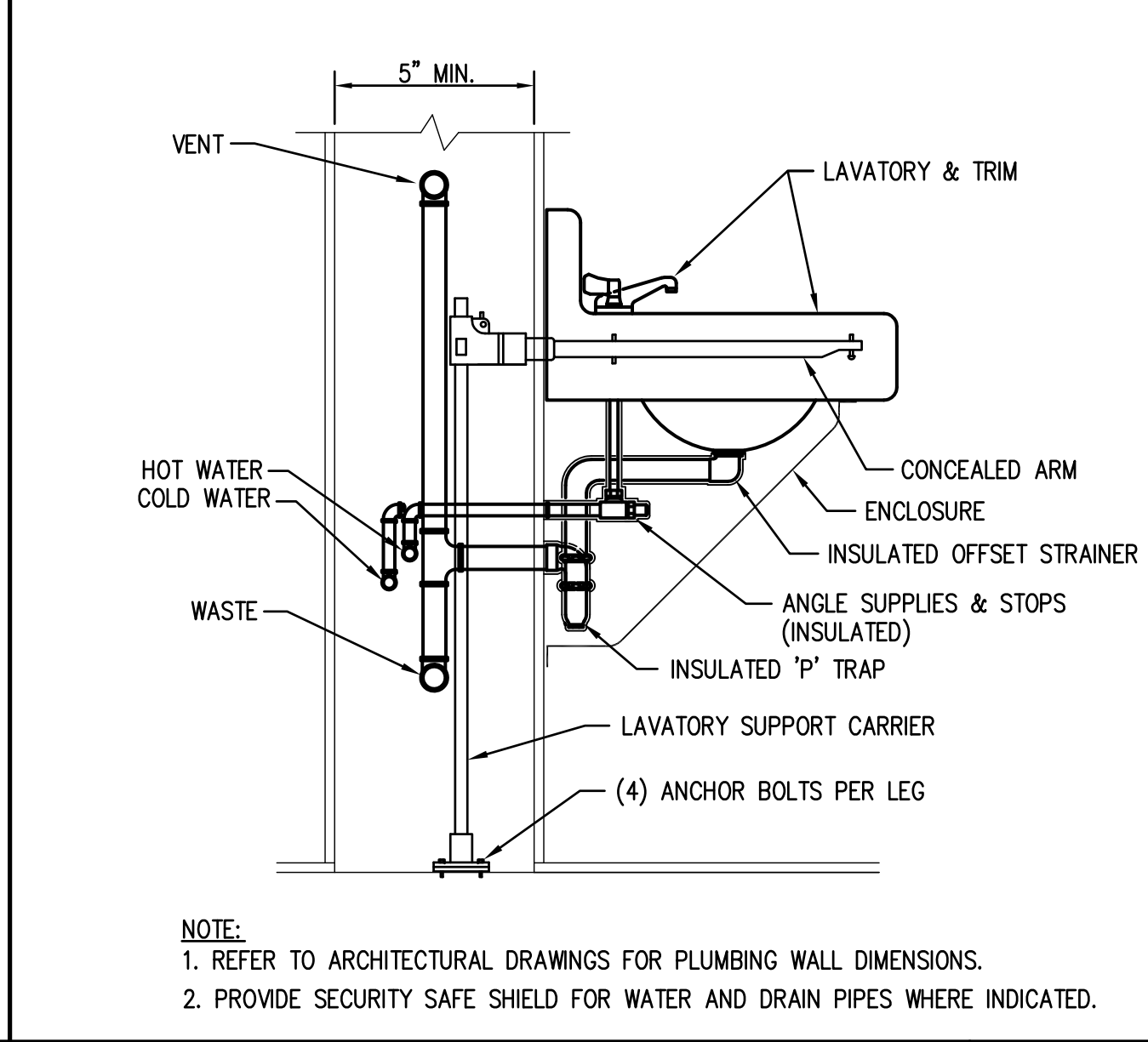
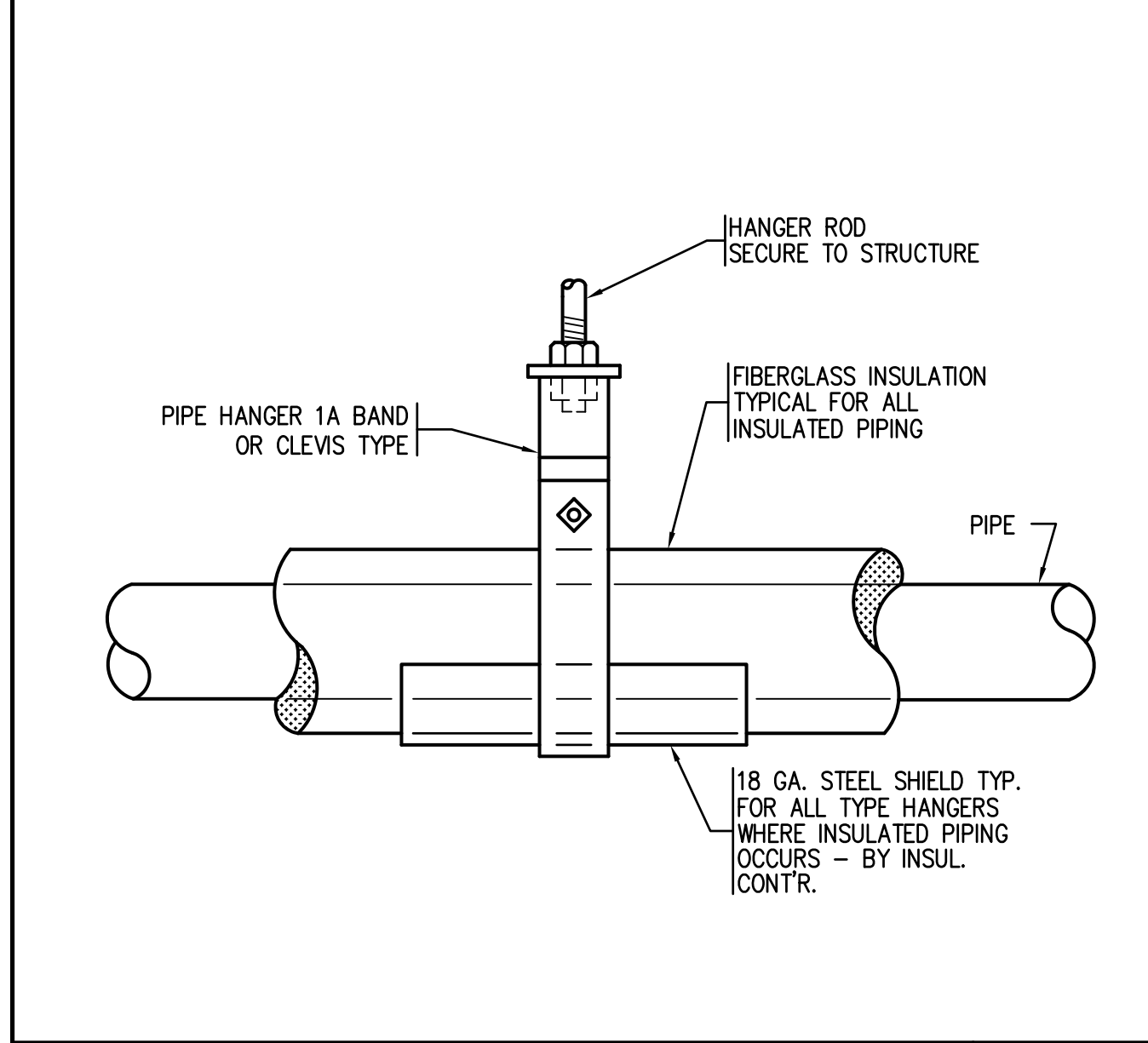
MEDICAL GAS OUTLET SCHEDULE													
TAG	DESCRIPTION	GAS OUTLETS											
		MV	OX	SLIDE	N ₂ O	MA	N	EVAC	IA	CO ₂			
MGO-1	WALL OUTLETS	1	1	0	0	0	0	0	0	0	0	0	0

NOTES:
1. ALL MEDICAL GAS OUTLETS SHALL BE DISS TYPE WITH TAMPER PROOF KITS.
2. SEE ARCHITECTURAL DRAWINGS FOR STAINLESS STEEL SECURITY SAFE ACCESS PANEL FOR MEDICAL GAS OUTLETS. COORDINATE OUTLETS WITH ACCESS PANEL.

MEDICAL GAS ZONE VALVE BOX SCHEDULE													
TAG	LOCATION(S)	VALVE SIZES											
		N ₂ O	MV	OX	MA	NIT.	ANES. EVAC.	INSTRU. AIR	CO ₂				
MGOZV-1	CORRIDOR DC-6PSY4	---	1-1/4"	3/4"	---	---	---	---	---	---	---	---	---

NOTES:
1. PROVIDE STAINLESS STEEL SECURITY SAFE ACCESS PANEL FOR MEDICAL GAS ZONE VALVE BOX.

BACKFLOW PREVENTER SCHEDULE										
DESIGNATION	MFG.	MODEL NO.	SIZE	LOCATION/ ROOM NO.	TYPE		SERVICE		REMARKS	
					RPBP	DCVA	ROOM NO.	EQUIPMENT		
(1) BFP	WATTS	009	3/4"	KITCHEN 621B	X	-	-	-	DISHWASHER	INSTALL PER D.E.P. REQUIREMENTS
(1) BFP	WATTS	7C	3/8"	KITCHEN 621B	-	X	-	-	COFFEE MAKERS	INSTALL PER D.E.P. REQUIREMENTS
(1) BFP	WATTS	7C	1/2"	KITCHEN 621B	X	-	-	-	ICE MACHINES WASTE MGMT.	INSTALL PER D.E.P. REQUIREMENTS
(1) BFP	WATTS	009	1"	PENTHOUSE ROOF	X	-	-	-	HEATING SYSTEM	INSTALL PER D.E.P. REQUIREMENTS

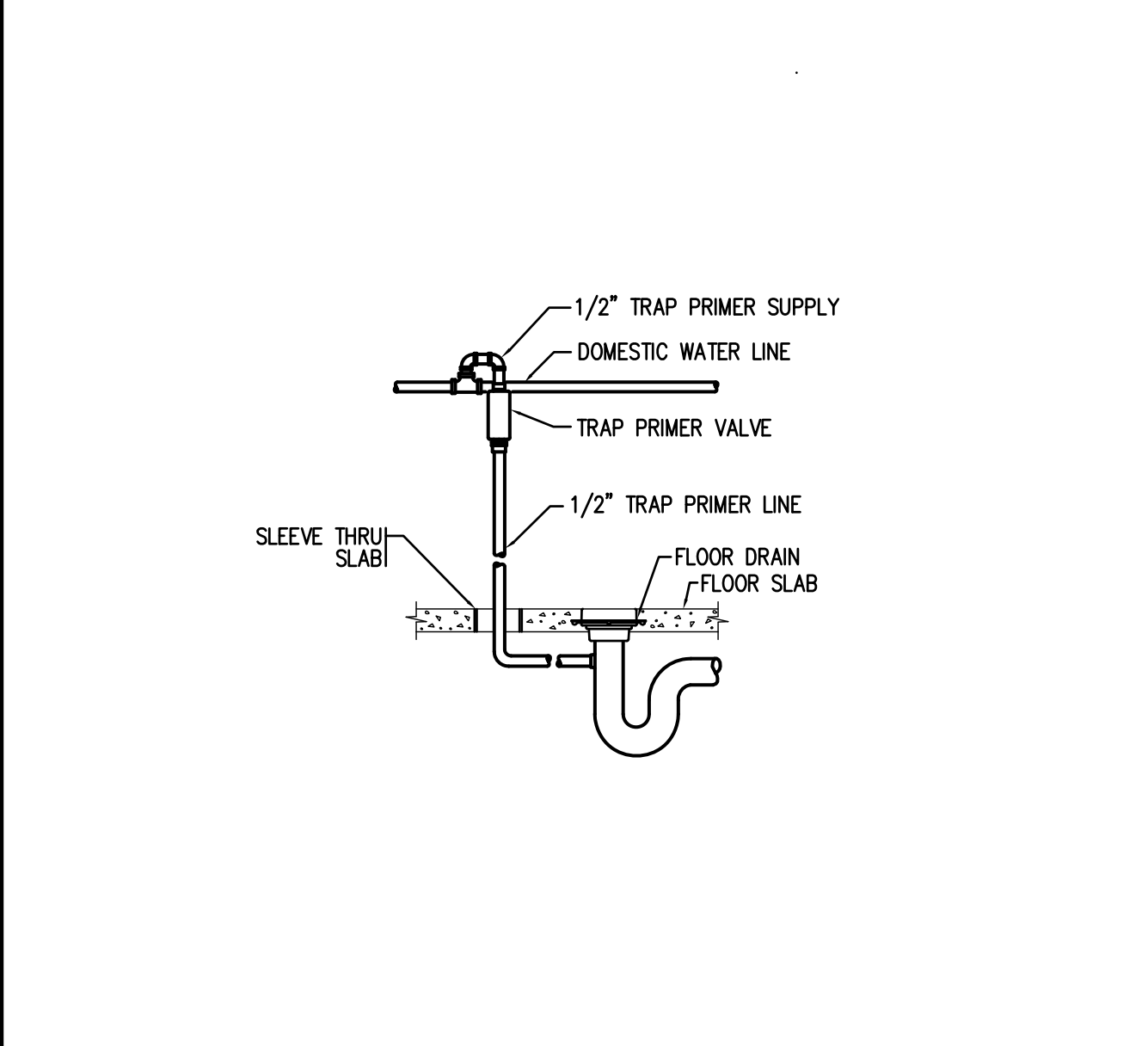
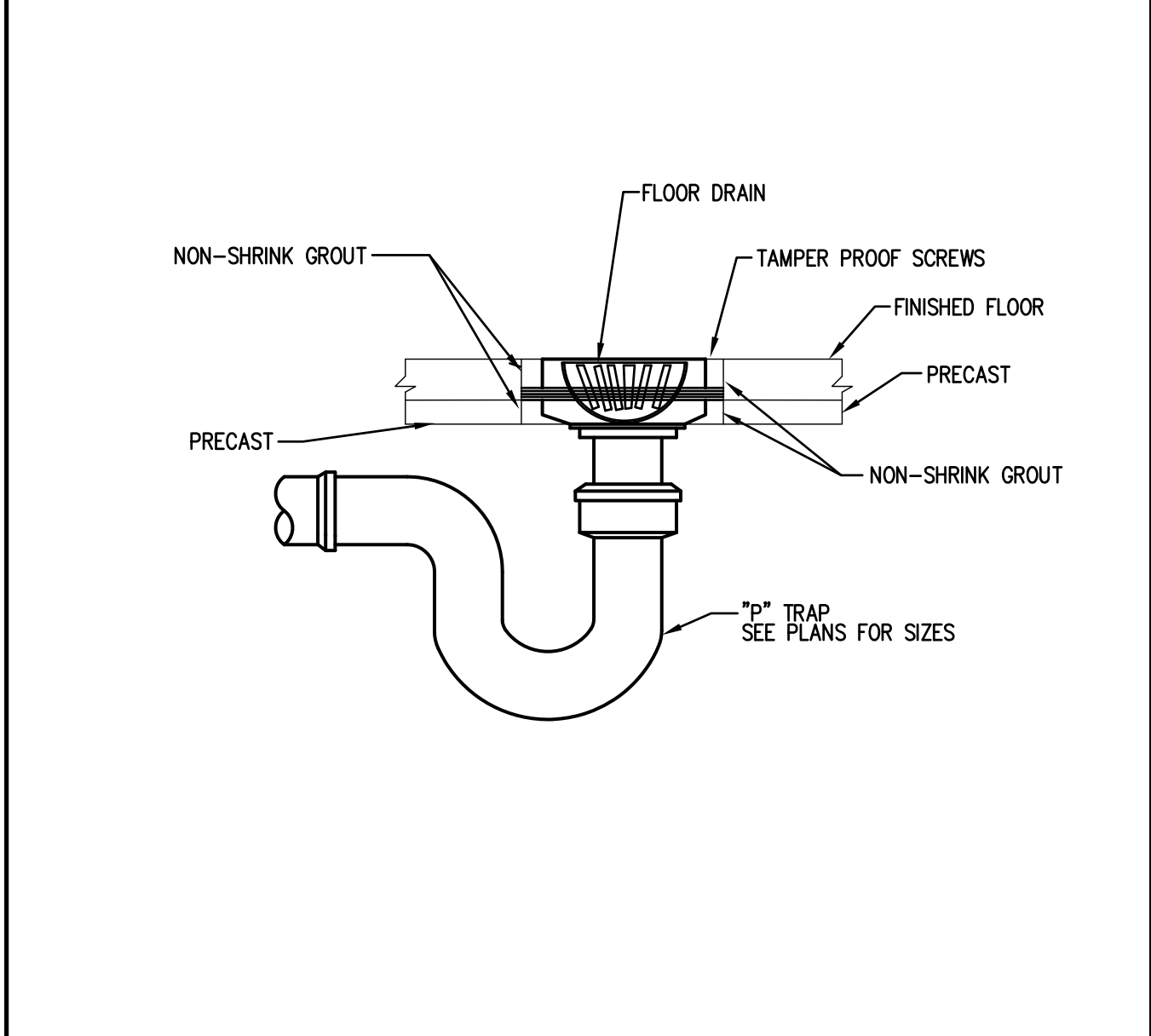
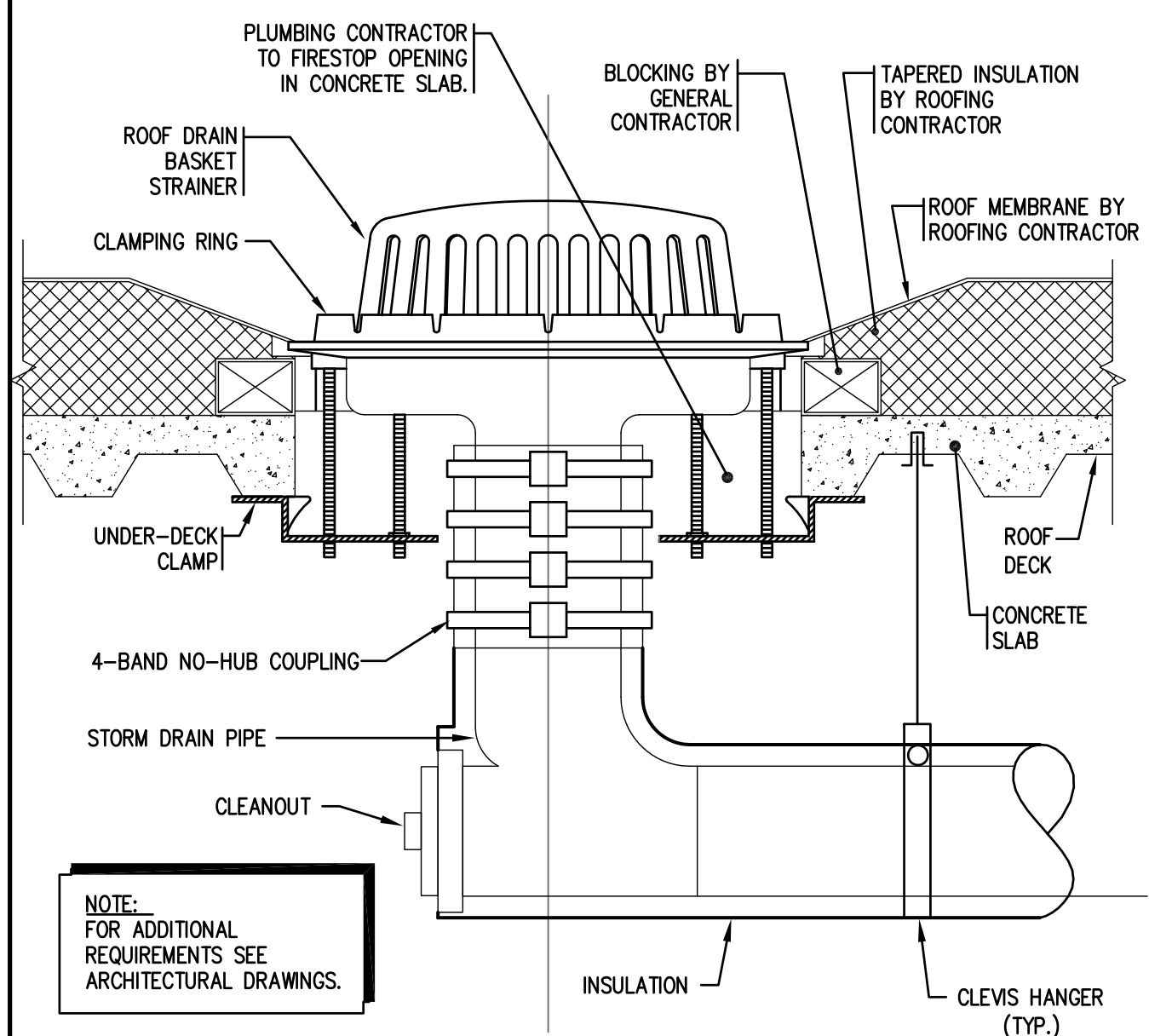
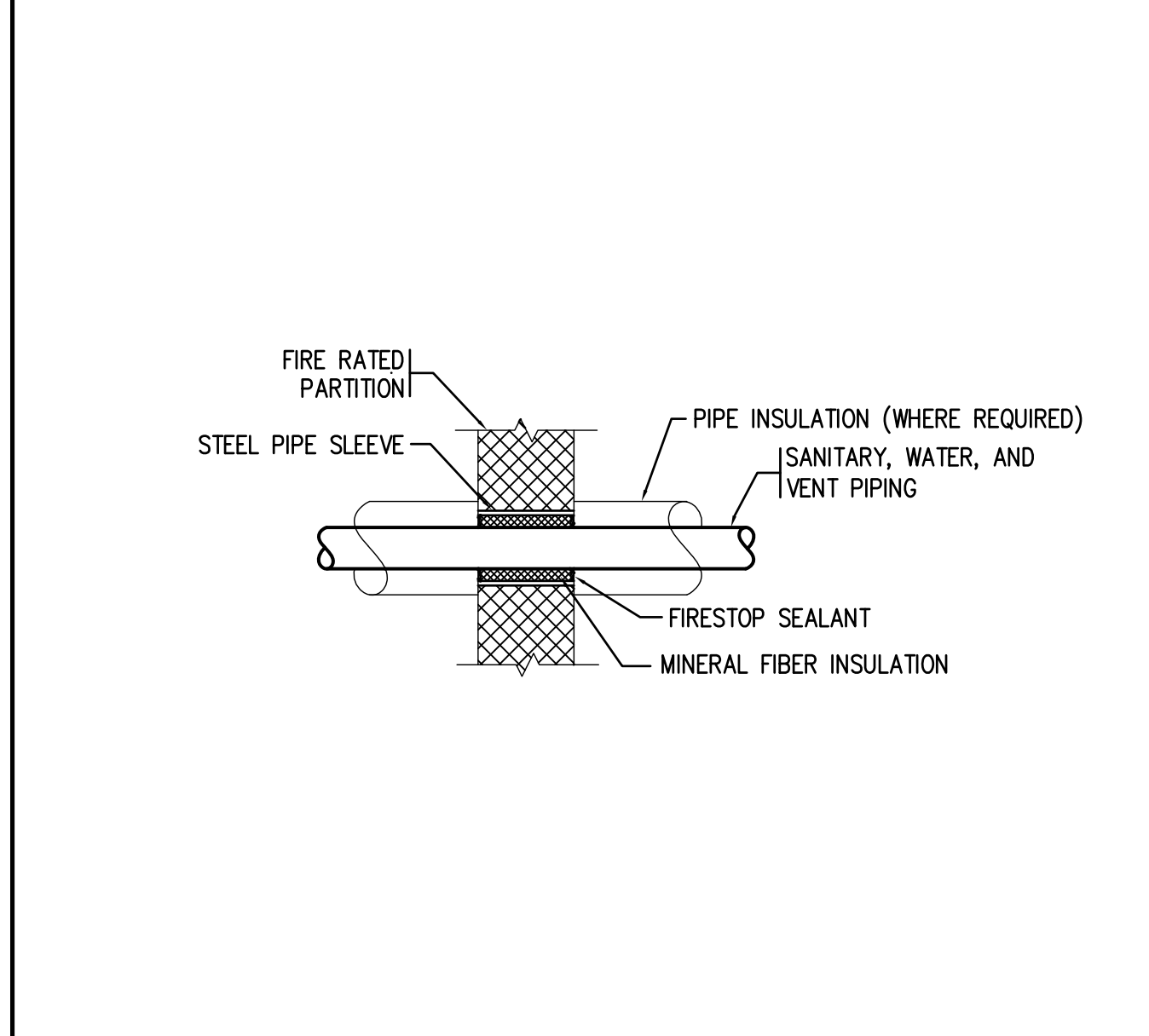


PIPE HANGER DIAGRAM NO SCALE P-1

H.C. WALL HUNG LAVATORY DIAGRAM NO SCALE P-2

TYPICAL VENT THRU ROOF DETAIL NO SCALE P-04

MEDICAL GAS OUTLETS ROUGHING DIAGRAM NO SCALE DMGAS_07



FIRE PROOFING INSULATED PIPE PENETRATION THRU FIRE /SMOKE RATED PARTITION DIAGRAM NO SCALE P-5

ROOF DRAIN PIPING DIAGRAM NO SCALE P-201

FLOOR DRAIN DIAGRAM NO SCALE P-02

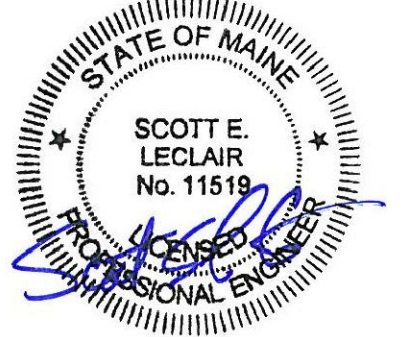
TRAP SEAL PRIMER DIAGRAM NO SCALE P-210

MorrisSwitzer
Environments for Health

Williston, Vermont
Boston, Massachusetts
Portland, Maine

One Dana Street
Portland, ME 04101
t 207.773.8841
f 207.773.8840

© 2009 MorrisSwitzer morriswitzer.com



BECKER
structural engineers, inc.

75 York Street
Portland, ME 04101-4701
info@beckerstructural.com

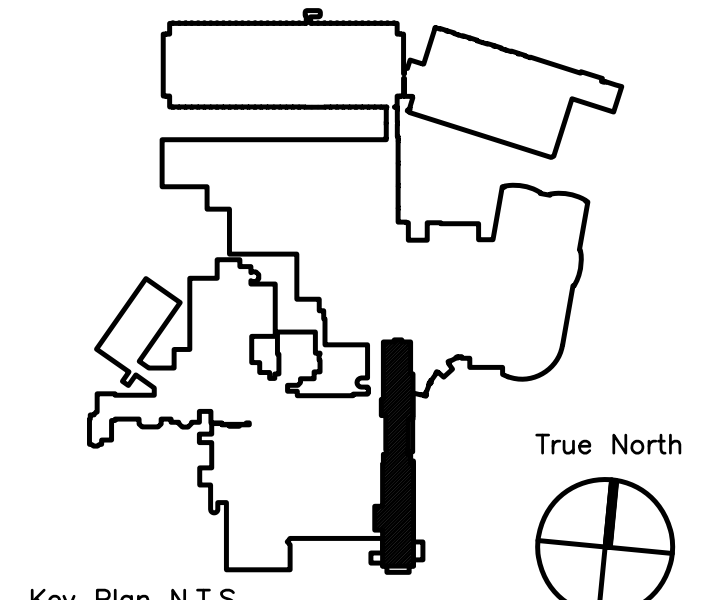
Tel 207-879-1838
Fax 207-879-1822
www.beckerstructural.com

Consultant

MECHANICAL / ELECTRICAL ENGINEERS

92 Montvale Ave, Suite 4100
Saco, ME 04158
Tel: 781-481-0210
Fax: 781-481-0203
email: info@f-t.com
www.f-t.com
Project No.: 09018.00

Consultant



ADDENDUM#1	12/4/09	1
Revision	Date	No

Maine Medical Center
Portland, Maine

MAINE MEDICAL CENTER
PAVILION 6 RENOVATIONS

MorrisSwitzer Project Number 28034
Date 11/19/09
Scale NOT TO SCALE
Sheet Title and Number

SIXTH FLOOR PAVILIONS
"A" & "C" PLUMBING
SCHEDULE & DETAILS
3P3.0

