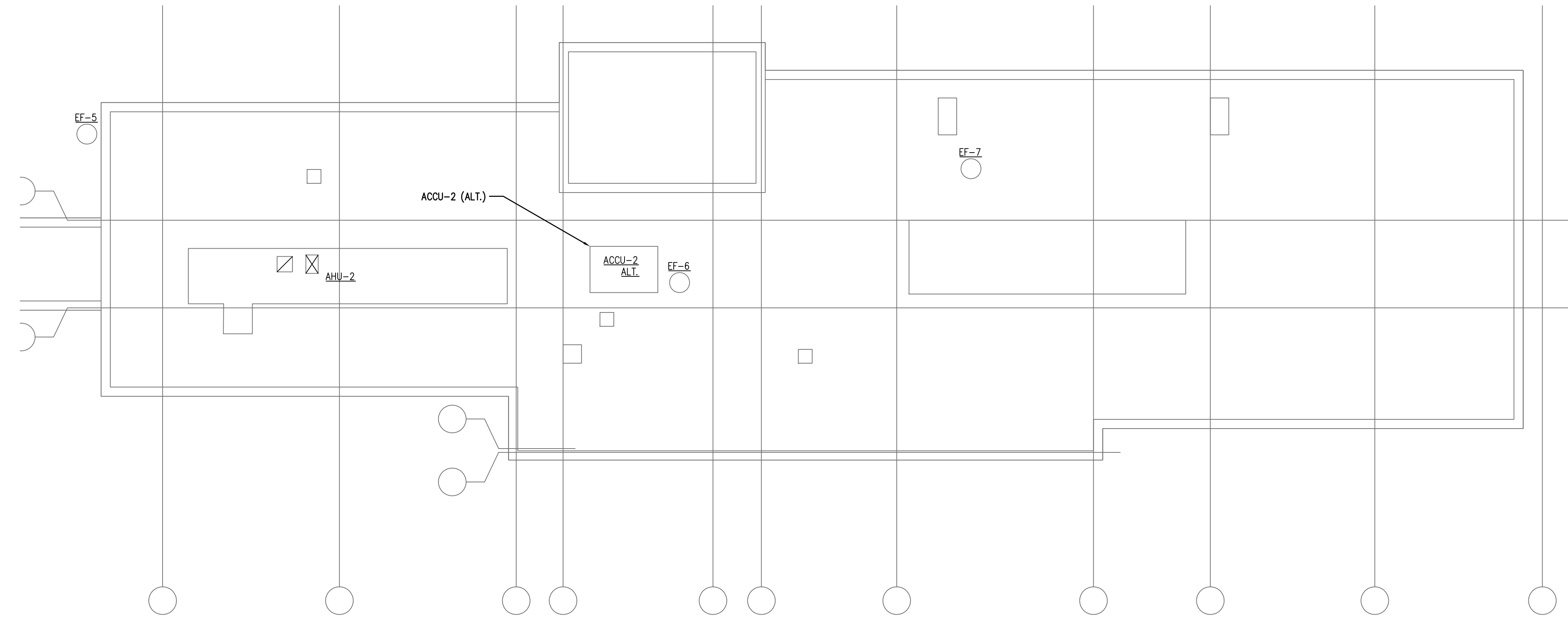


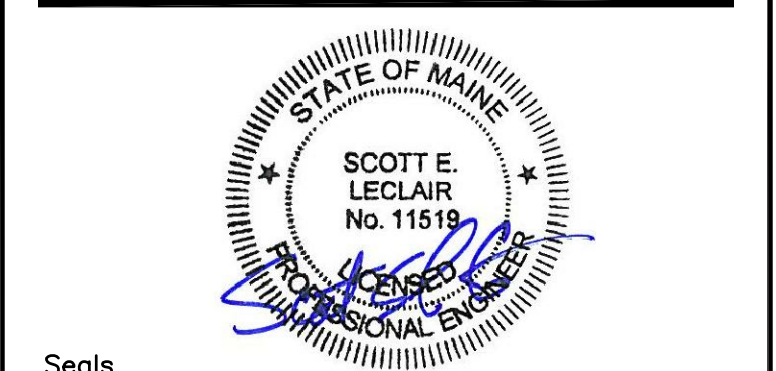
PAVILION "C"



PAVILION "A"

PLUMBING WORK NOTE:
 OFFSET SANITARY VENTS AND EXHAUSTS 25 FEET MINIMUM FROM ANY HVAC EQUIPMENT AIR INTAKE TO MAINTAIN CLEARANCE FROM AIR HANDLER INTAKES.

PLUMBING WORK NOTE:
 ① COORDINATE ALL PIPE PENETRATIONS IN PENTHOUSE AND CONNECTIONS TO HVAC EQUIPMENT WITH HVAC CONTRACTOR.



BECKER
 structural engineers, inc.

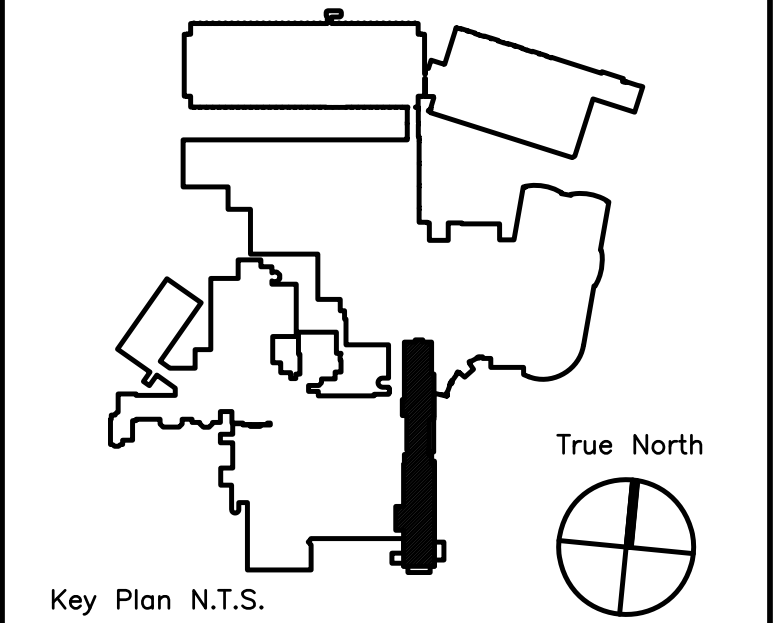
75 York Street
 Portland, ME 04101-4701
 info@beckerstructural.com

Tel 207-879-1838
 Fax 207-879-1822
 www.beckerstructural.com

Consultant

FITZMEYER & TOCCI
 ASSOCIATES, INC.

MECHANICAL / ELECTRICAL ENGINEERS
 92 Montvale Ave, Suite 4100
 Saco, ME 04218
 Tel: 781-481-0210
 Fax: 781-481-0203
 email: info@f-t.com
 www.f-t.com
 Project No.: 09018.00



ADDENDUM#	Date	No
ADDENDUM#1	12/4/09	1
Revision	Date	No

Maine Medical Center
 Portland, Maine

MAINE MEDICAL CENTER
 PAVILION 6 RENOVATIONS

MorrisSwitzer Project Number 28034
 Date 11/19/09
 Scale 1/8" = 1'-0"
 Sheet Title and Number

SIXTH FLOOR PAVILIONS "A" & "C" PLUMBING NEW WORK ROOF PLAN
3P2.2

