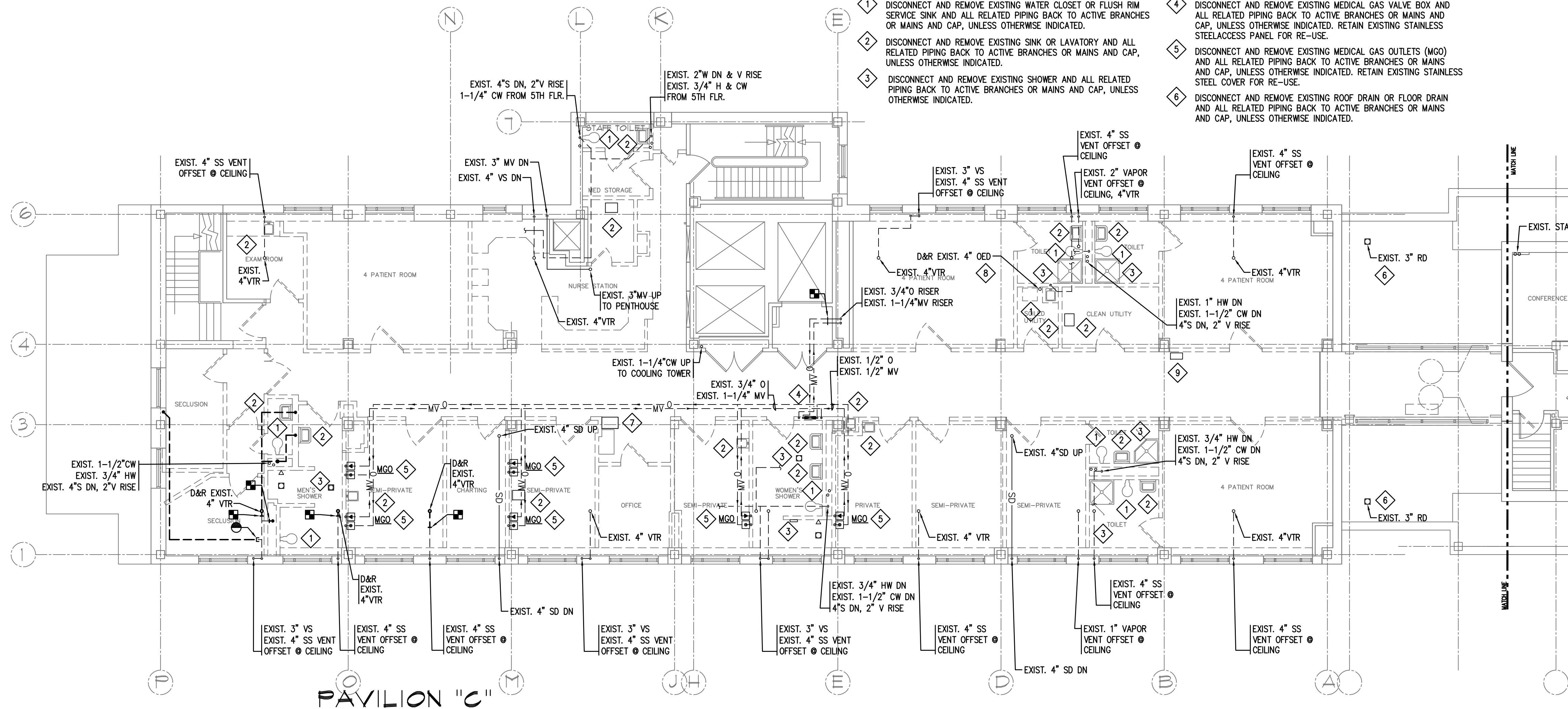
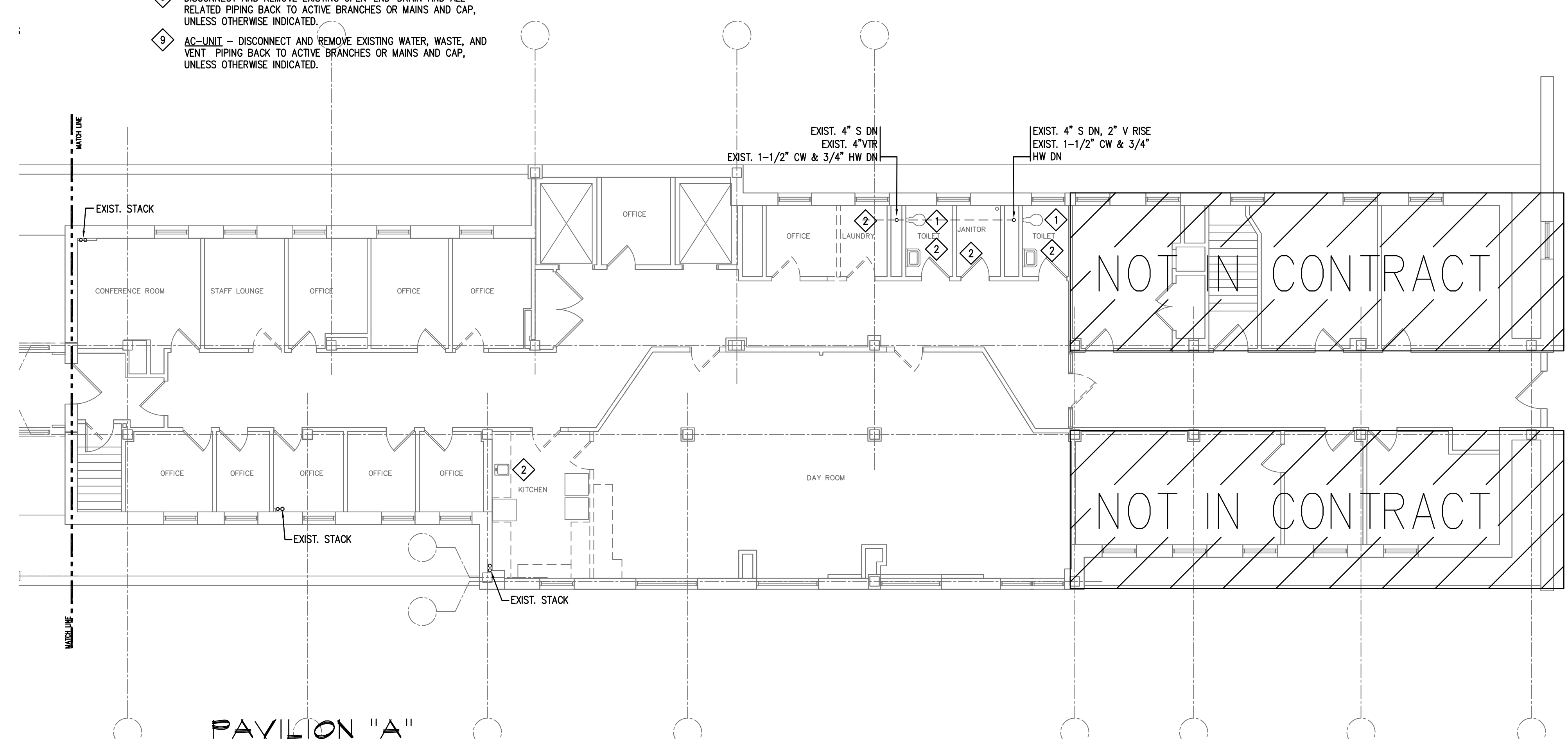


PLUMBING DEMOLITION WORK NOTES:

- 1 DISCONNECT AND REMOVE EXISTING WATER CLOSET OR FLUSH RIM SERVICE SINK AND ALL RELATED PIPING BACK TO ACTIVE BRANCHES OR MAINS AND CAP, UNLESS OTHERWISE INDICATED.
- 2 DISCONNECT AND REMOVE EXISTING SINK OR LAVATORY AND ALL RELATED PIPING BACK TO ACTIVE BRANCHES OR MAINS AND CAP, UNLESS OTHERWISE INDICATED.
- 3 DISCONNECT AND REMOVE EXISTING SHOWER AND ALL RELATED PIPING BACK TO ACTIVE BRANCHES OR MAINS AND CAP, UNLESS OTHERWISE INDICATED.
- 4 DISCONNECT AND REMOVE EXISTING MEDICAL GAS VALVE BOX AND ALL RELATED PIPING BACK TO ACTIVE BRANCHES OR MAINS AND CAP, UNLESS OTHERWISE INDICATED. RETAIN EXISTING STAINLESS STEEL ACCESS PANEL FOR RE-USE.
- 5 DISCONNECT AND REMOVE EXISTING MEDICAL GAS OUTLETS (MGO) AND ALL RELATED PIPING BACK TO ACTIVE BRANCHES OR MAINS AND CAP, UNLESS OTHERWISE INDICATED. RETAIN EXISTING STAINLESS STEEL COVER FOR RE-USE.
- 6 DISCONNECT AND REMOVE EXISTING ROOF DRAIN OR FLOOR DRAIN AND ALL RELATED PIPING BACK TO ACTIVE BRANCHES OR MAINS AND CAP, UNLESS OTHERWISE INDICATED.



- 7 DISCONNECT AND REMOVE EXISTING ELECTRIC WATER COOLER AND ALL RELATED PIPING BACK TO ACTIVE BRANCHES OR MAINS AND CAP, UNLESS OTHERWISE INDICATED.
- 8 DISCONNECT AND REMOVE EXISTING OPEN-END-DRAIN AND ALL RELATED PIPING BACK TO ACTIVE BRANCHES OR MAINS AND CAP, UNLESS OTHERWISE INDICATED.
- 9 AC-UNIT - DISCONNECT AND REMOVE EXISTING WATER, WASTE, AND VENT PIPING BACK TO ACTIVE BRANCHES OR MAINS AND CAP, UNLESS OTHERWISE INDICATED.



Seals

**BECKER**  
structural engineers, inc.

75 York Street  
Portland, ME 04101-4701  
info@beckerstructural.com

Tel 207-879-1838  
Fax 207-879-1822  
www.beckerstructural.com

Consultant

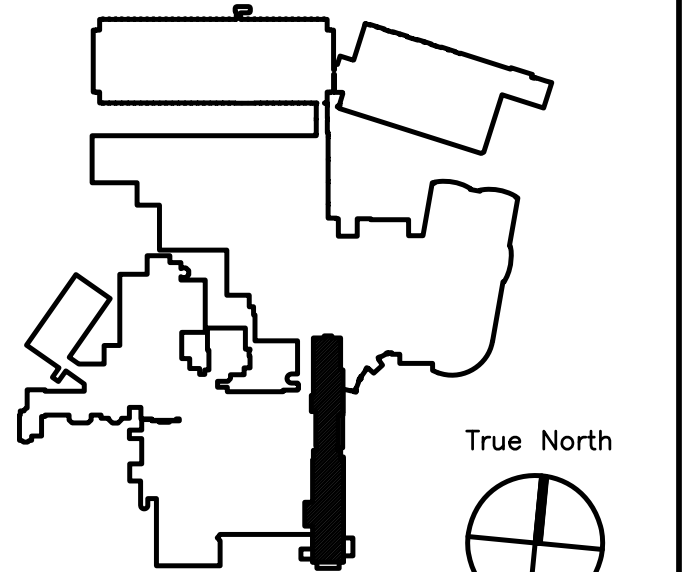
MECHANICAL / ELECTRICAL ENGINEERS

92 Montvale Ave, Suite 4100  
Snohomish, WA 98290  
Tel: 781-481-0210  
Fax: 781-481-0203  
email: info@f-t.com  
www.f-t.com

**FITZMEYER & TOCCI**  
ASSOCIATES, INC.

Project No.: 09018.00

Consultant



Key Plan N.T.S.

ADDENDUM#	Date	No
ADDENDUM#1	12/4/09	1
Revision	Date	No



**MAINE MEDICAL CENTER**  
PAVILION 6 RENOVATIONS

MorrisSwitzer Project Number 28034  
Date 11/19/09  
Scale 1/8" = 1'-0"  
Sheet Title and Number

**SIXTH FLOOR PAVILIONS "A" & "C" PLUMBING DEMOLITION PLAN**  
**3P1.0**

