

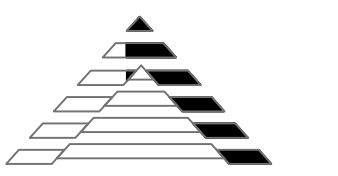


Seals

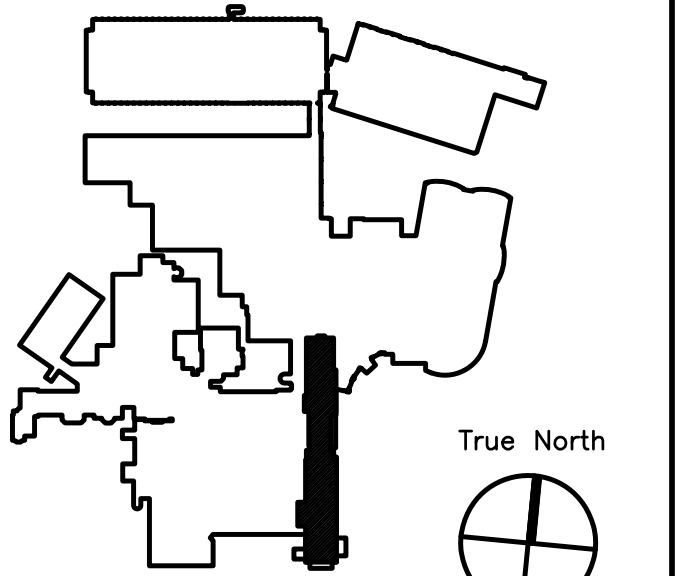
BECKER
structural engineers, inc.

75 York Street Tel 207-879-1838
Portland, ME 04101-4701 Fax 207-879-1822
info@beckerstructural.com www.beckerstructural.com

Consultant



Consultant



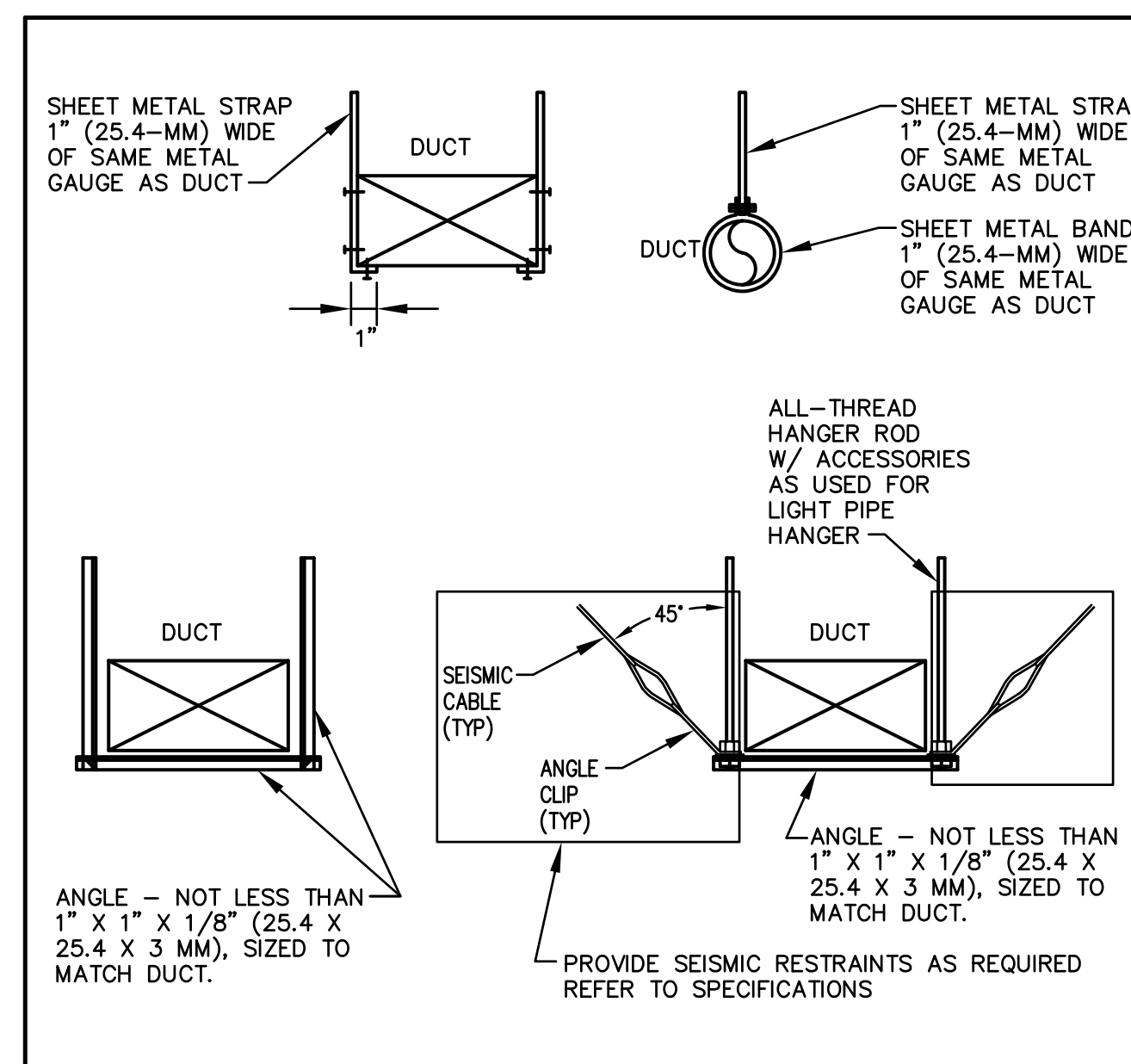
Key Plan N.T.S.

ADDENDUM#1	12/4/09	1
Revision	Date	No

MAINE MEDICAL CENTER
PAVILION 6 RENOVATIONS

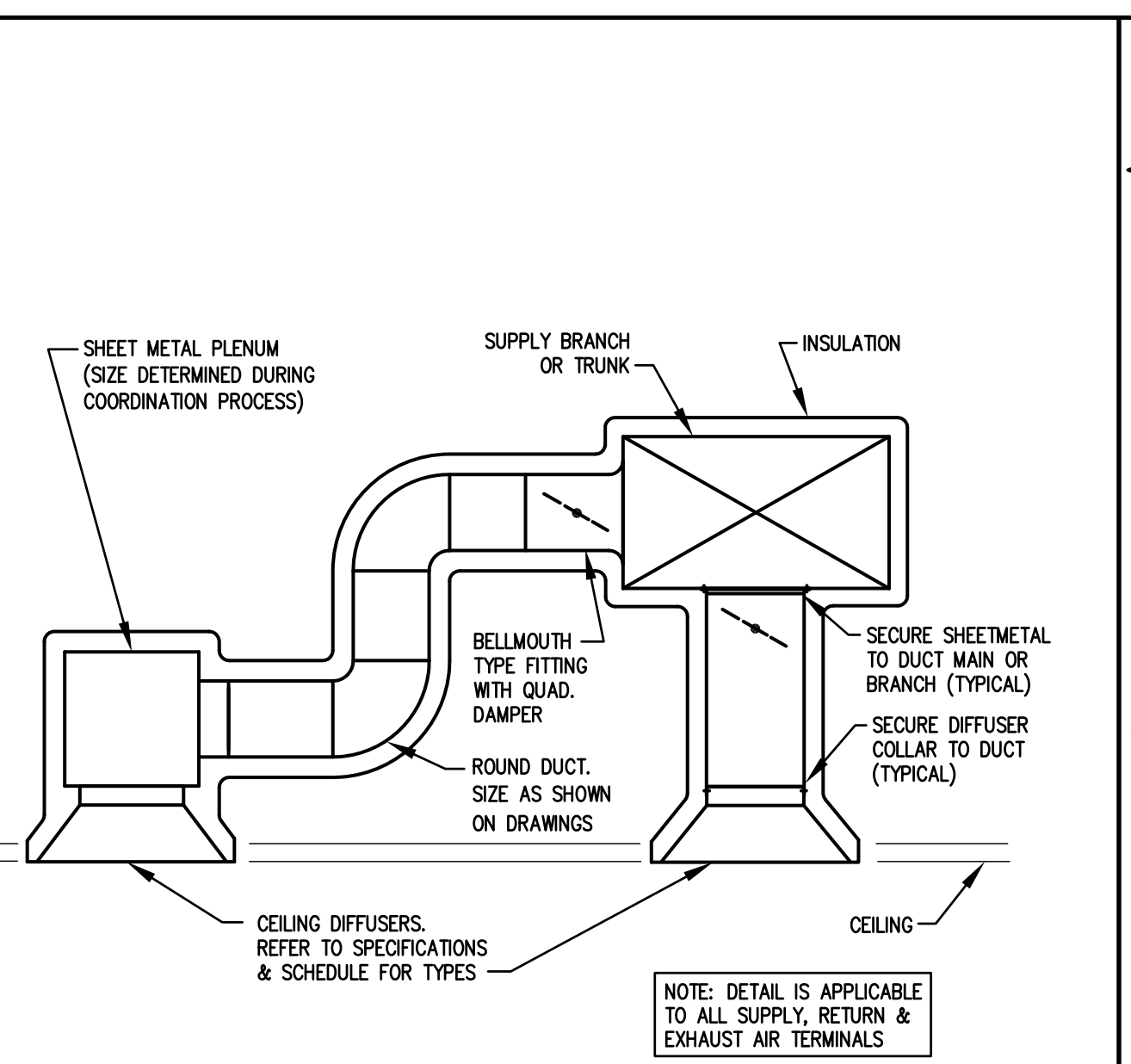
MorrisSwitzer Project Number 28034
Date 11/19/09
Scale N.T.S.
Sheet Title and Number

SIXTH FLOOR PAVILIONS
"A" & "C" MECHANICAL
DETAILS I
3M4.0



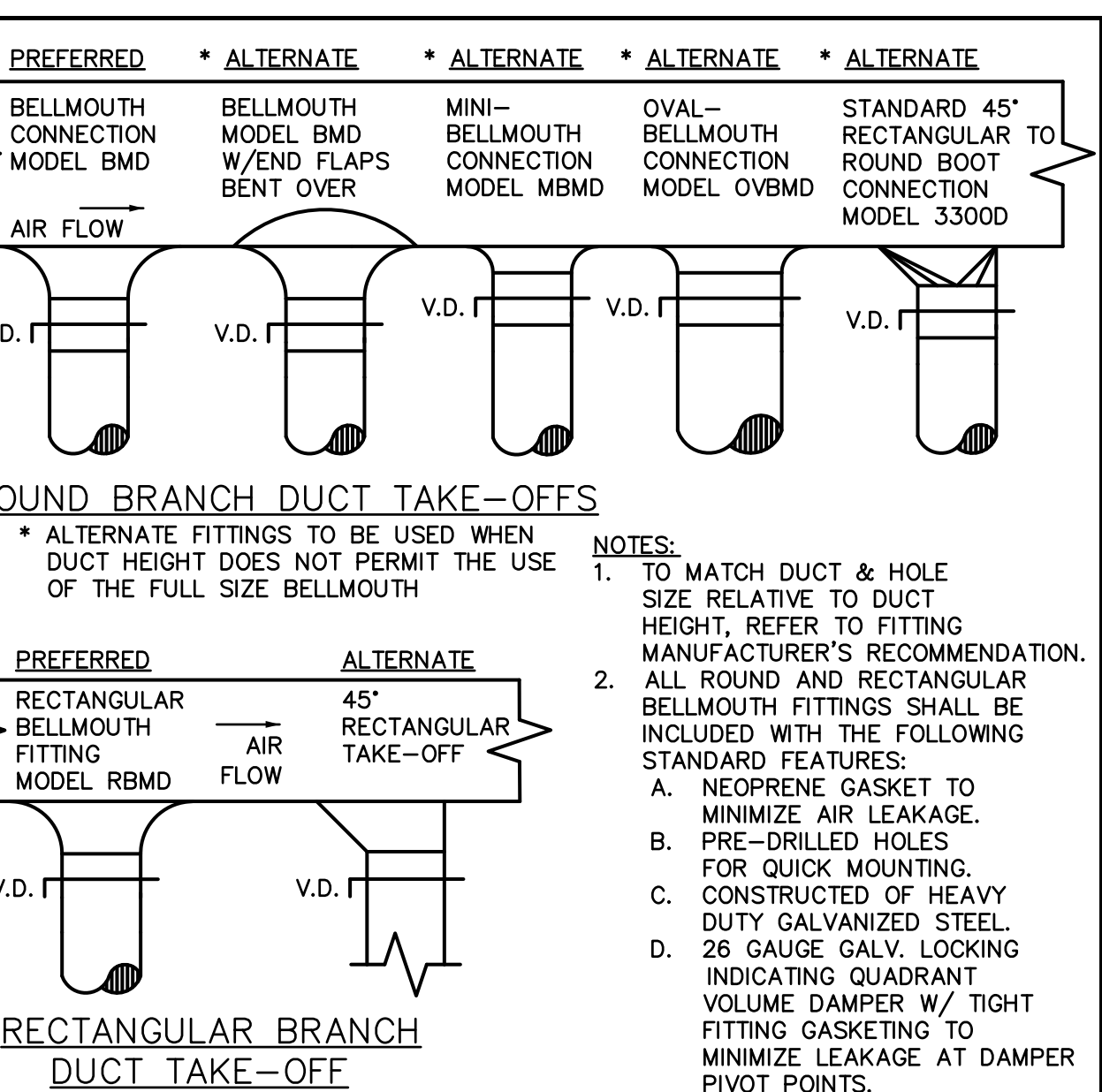
SHEET-METAL DUCT HANGERS

NO SCALE
15616-02



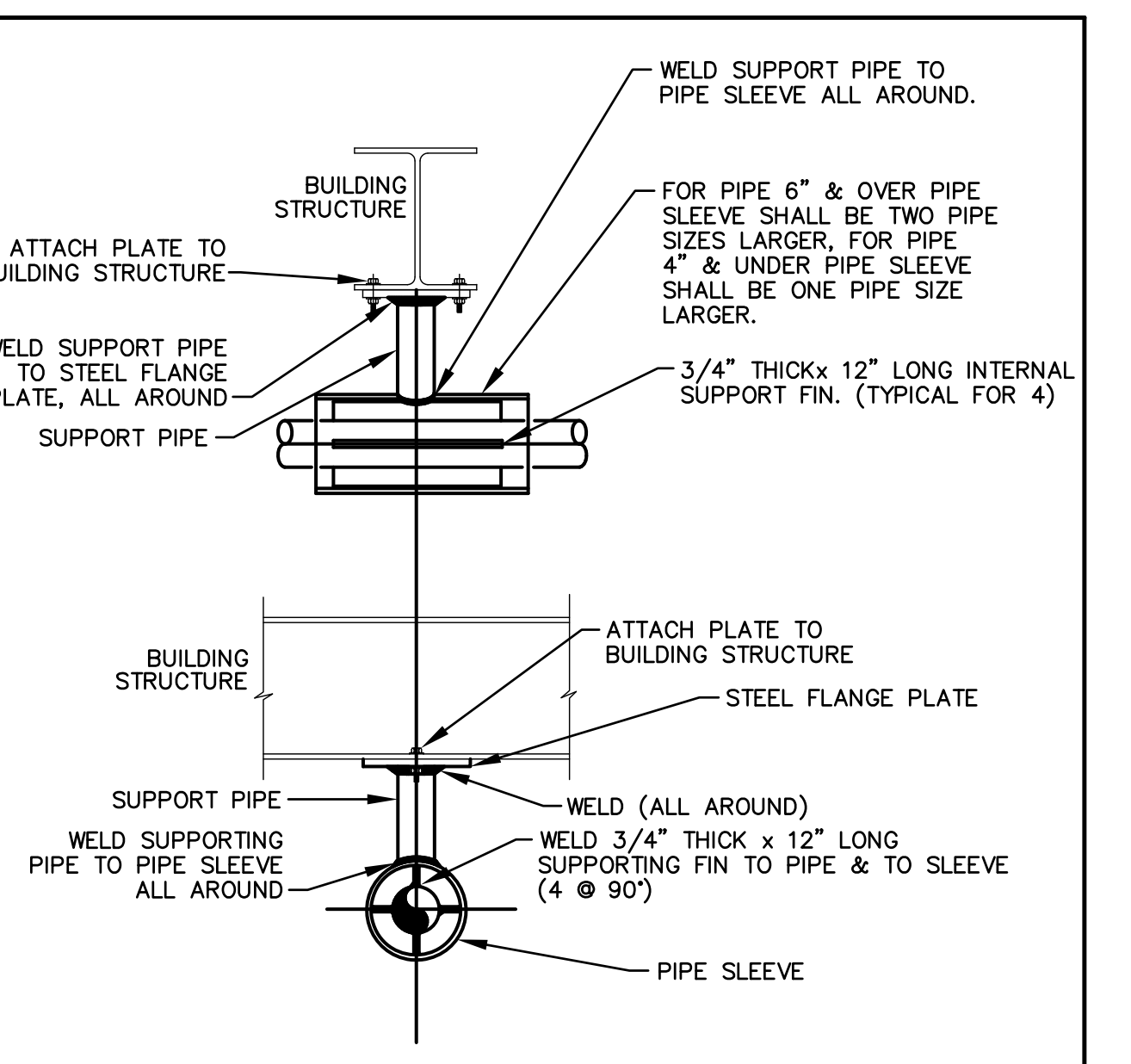
INSTALLATION AT CEILING SUPPLY DIFFUSERS

NO SCALE
15613-0HC



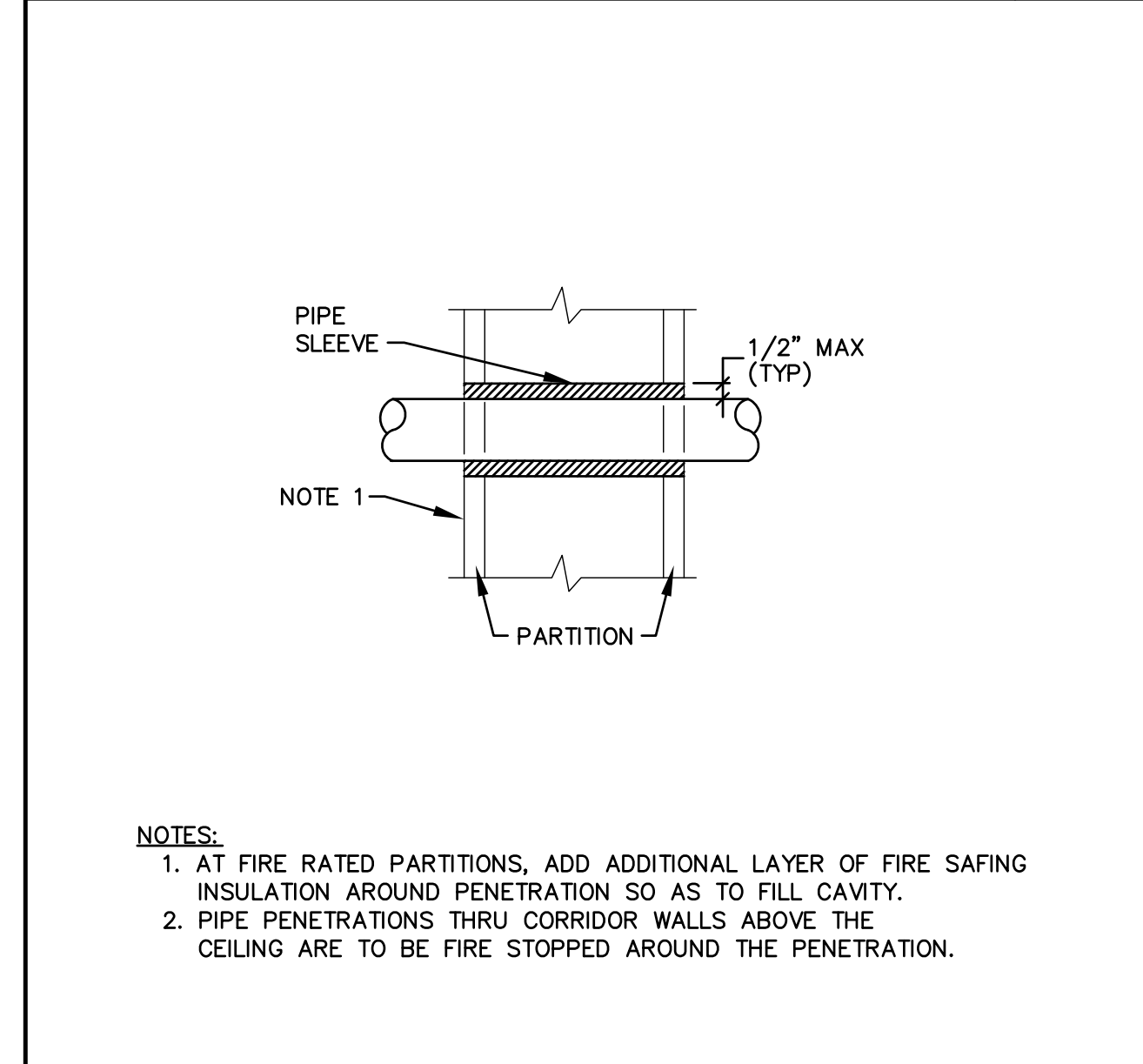
BRANCH TAKE-OFFS

NO SCALE
15613-14



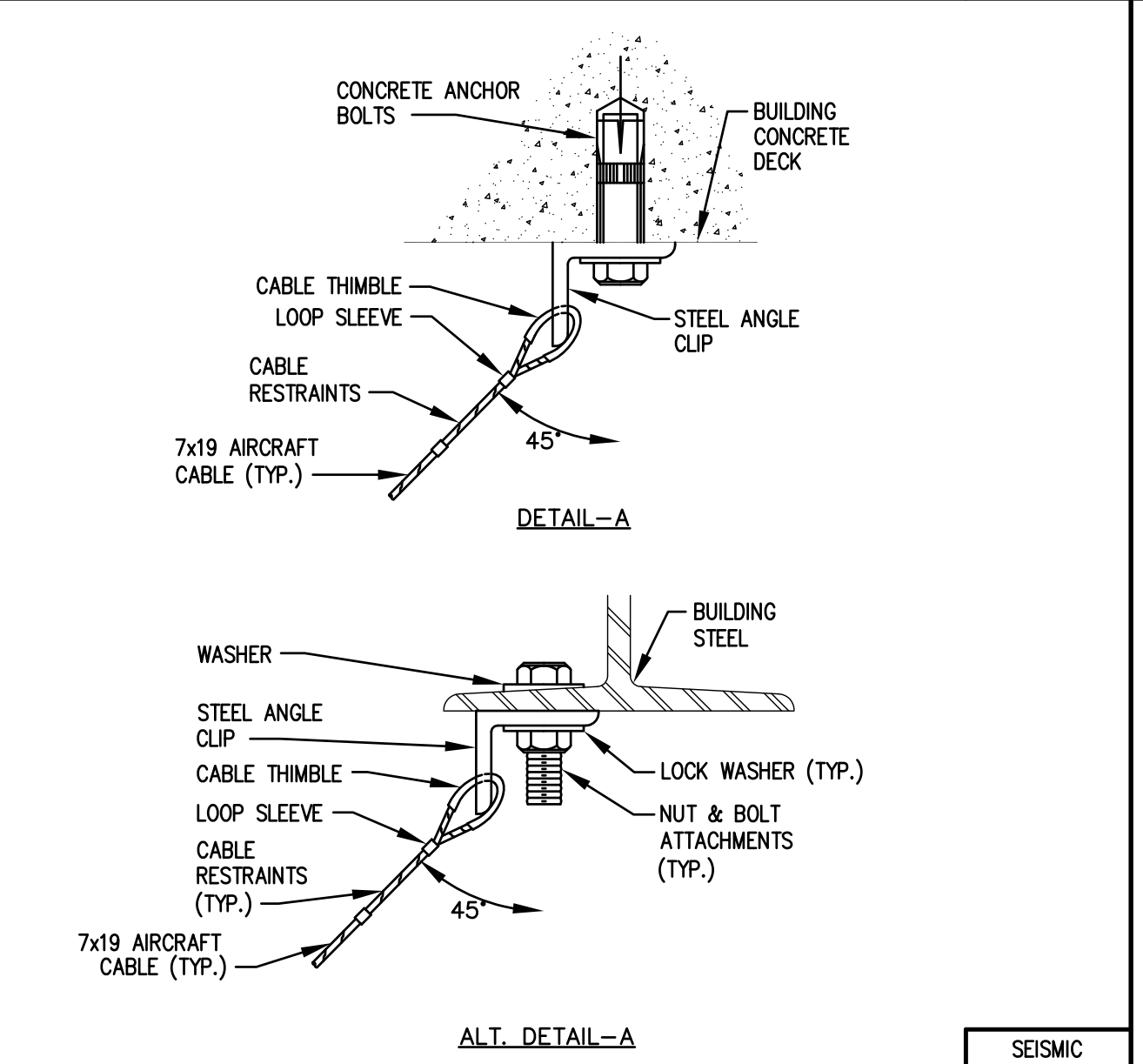
PIPE GUIDE DETAIL

NO SCALE
15617-14



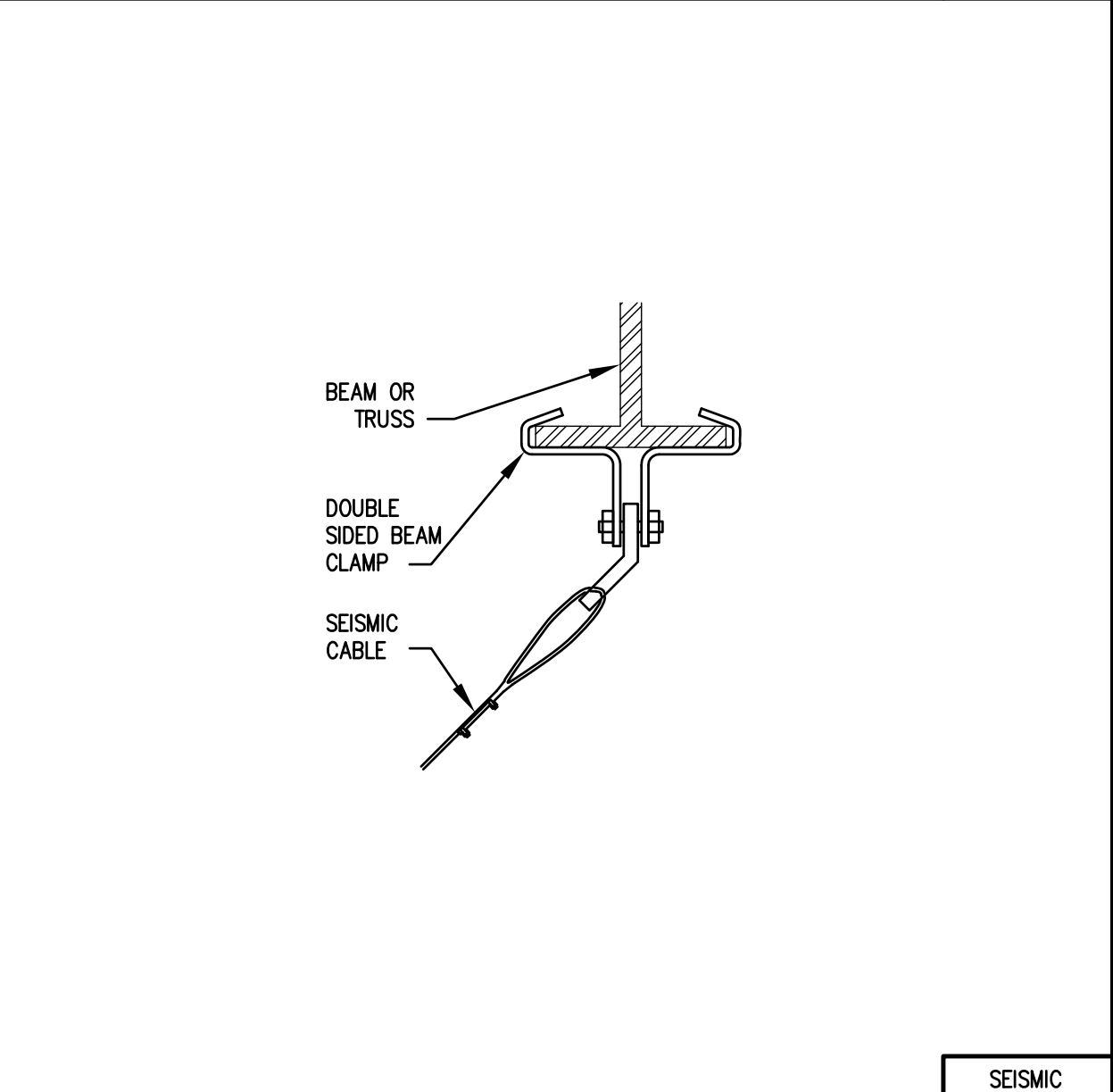
PIPE WALL PENETRATIONS

NO SCALE
15617-06



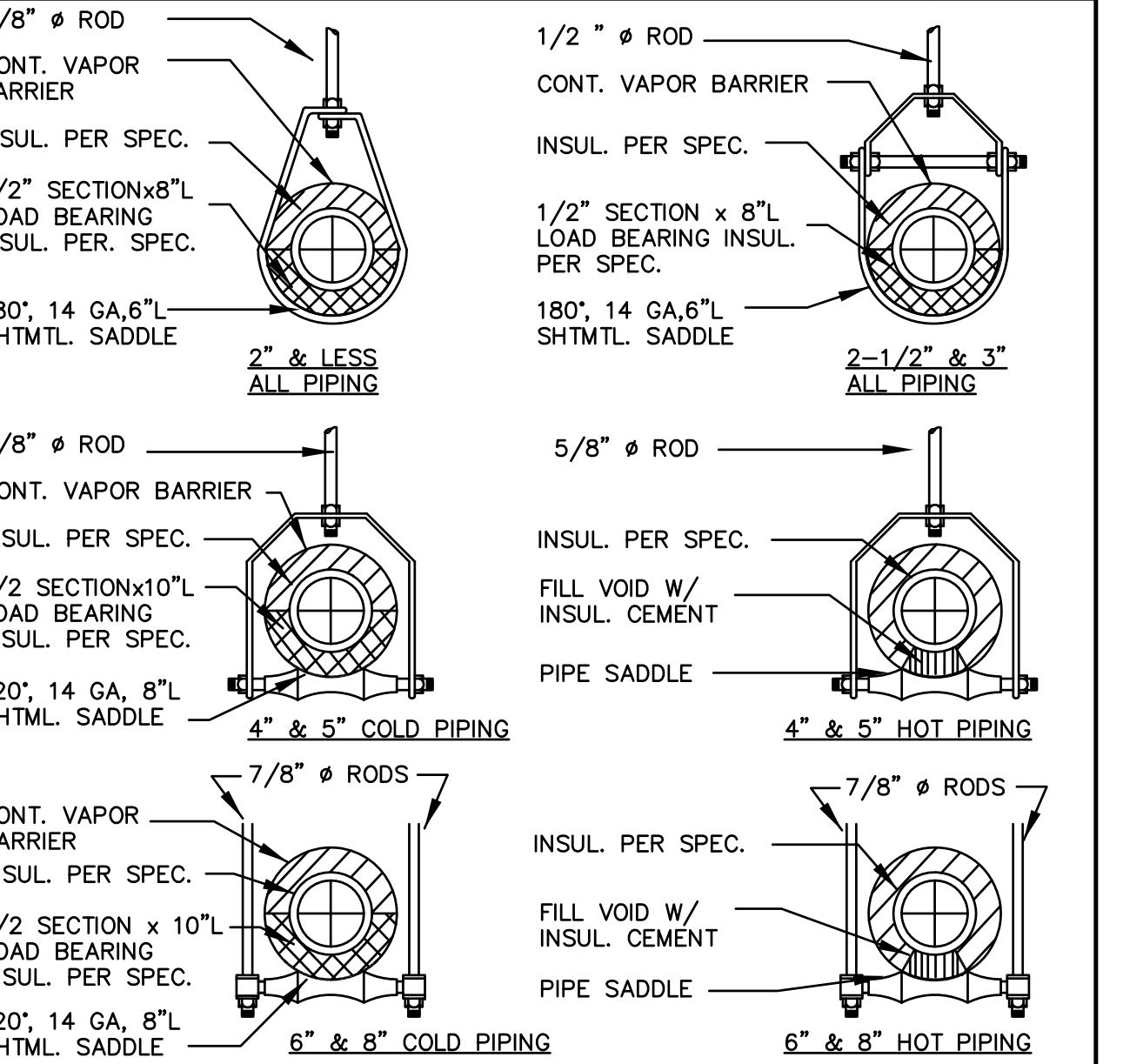
(DETAIL "A") RESTRAINTS

SEISMIC
NO SCALE
15607-04S



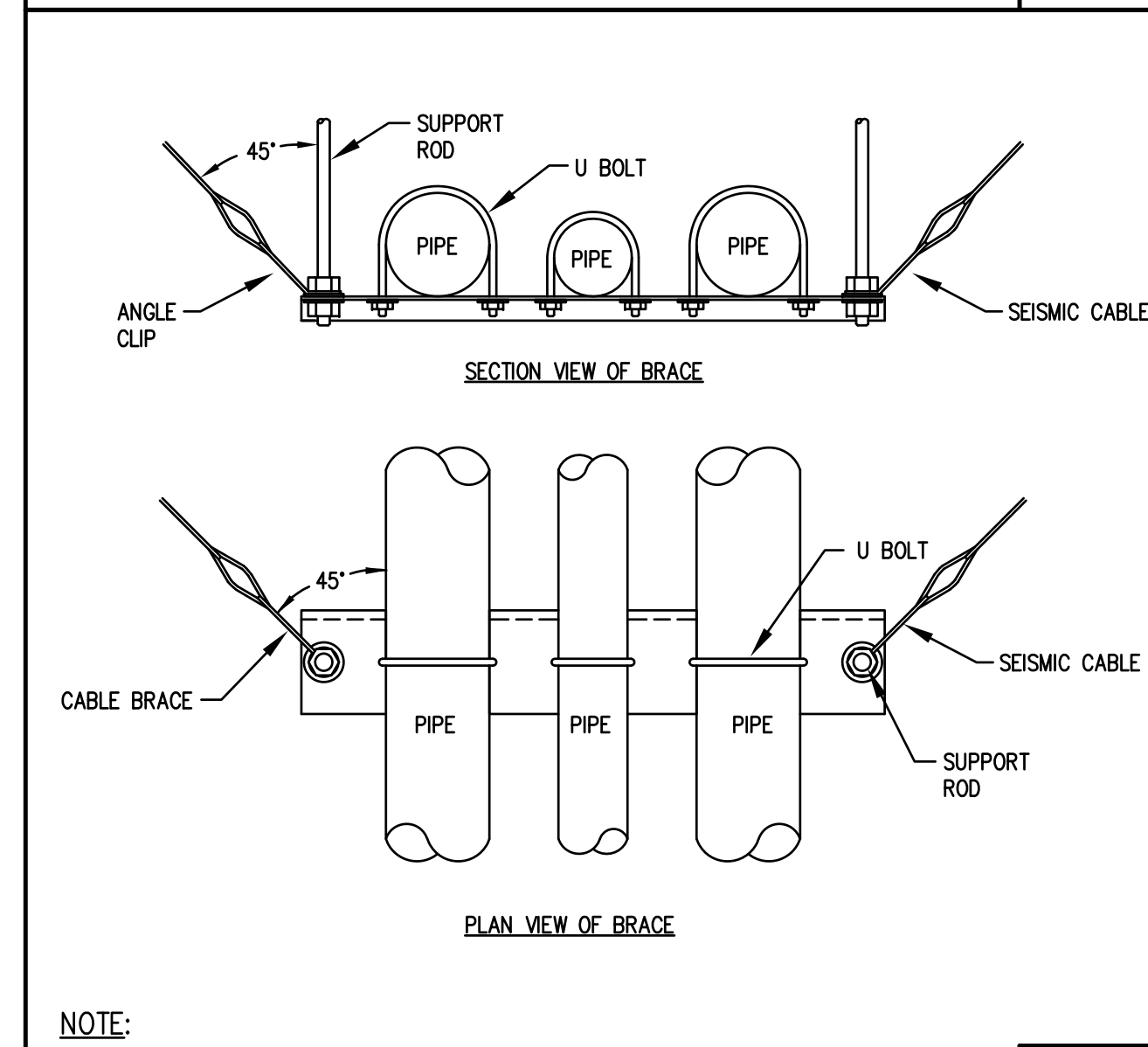
CABLE CONNECTION TO DOUBLE SIDED BEAM CLAMP DETAIL

SEISMIC
NO SCALE
15607-05S



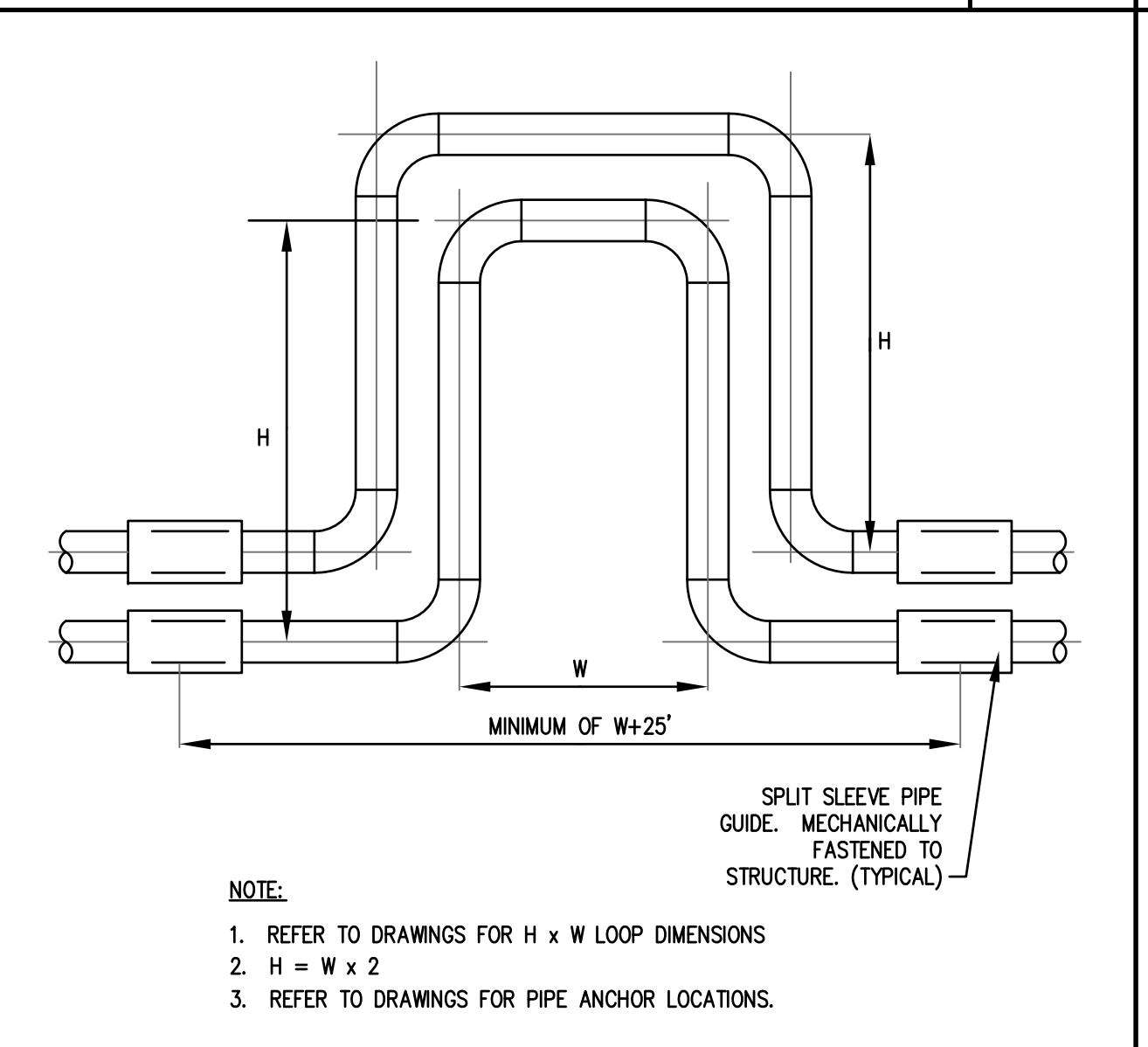
PIPE HANGER DETAIL

NO SCALE
15617-05



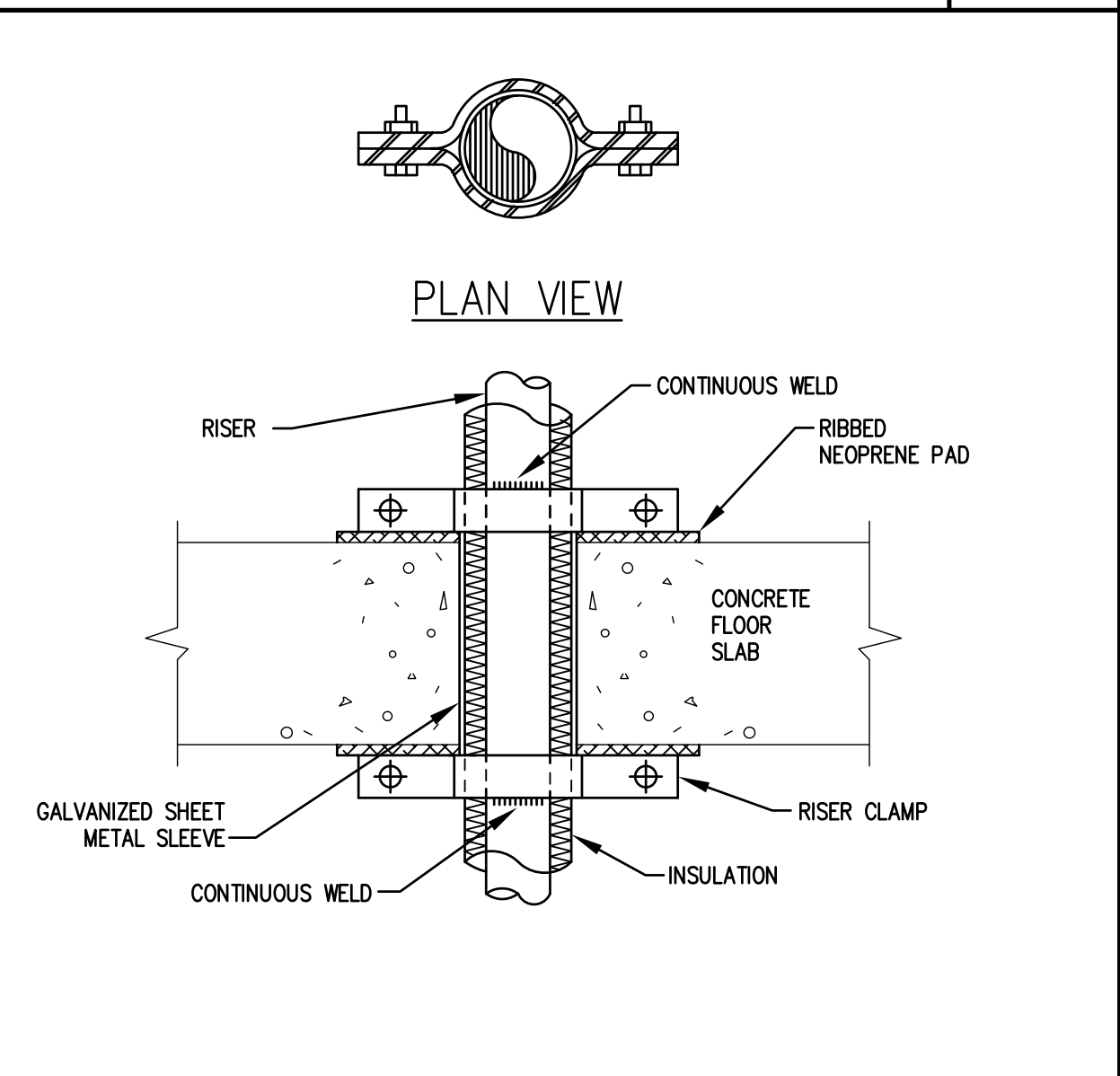
TWO CABLE BRACE DETAIL FOR TRAPEZE HUNG PIPING

SEISMIC
NO SCALE
15607-02S



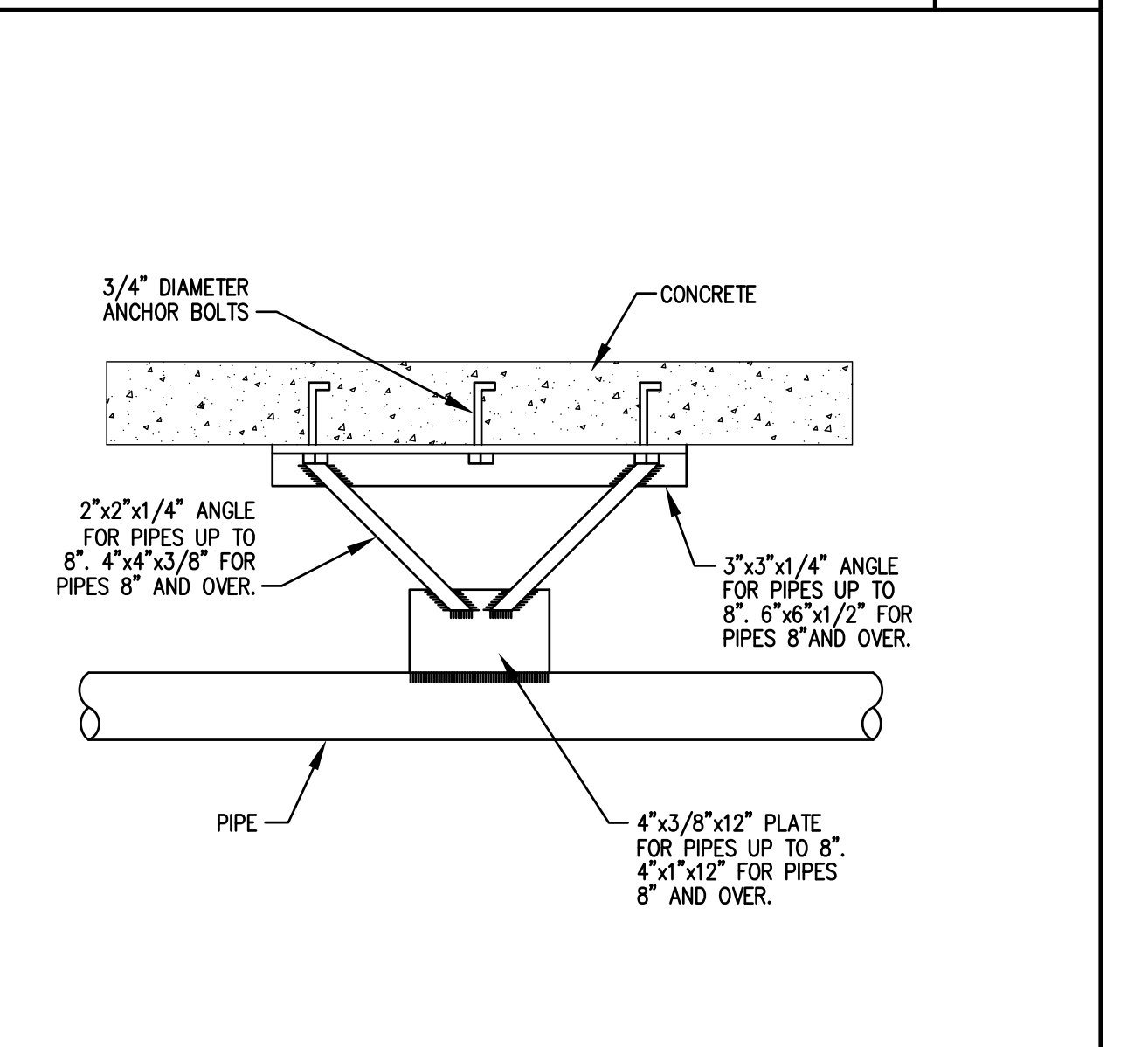
EXPANSION LOOP DETAIL

NO SCALE
15617-01



TYPICAL RISER ANCHOR DETAIL

NO SCALE
15617-02



PIPE ANCHOR

NO SCALE
15617-04

True North