

FAN SCHEDULE																				F	
TAG	SERVES	CFM	SP TOTAL	DRIVE	VOLUME CONTROL	DIA	OUT VEL	TIP SPEED	RPM	FAN MOTOR DATA				HOUSING		ROOF CURB		DAMPER	ACCESSORIES	BASED ON MFR/MODEL	
										HP	RPM	V	PH	DESIGN	MTL	TYPE	HGT (in)				
EXH-183	TOILETS	375	0.25	BELT	NONE	25	390	2941	1004	1/6	1725	115	1	60	DOME	AL	RAISED CANT	18	MOTORIZED	SEE NOTES	GREENHECK GB
EXH-184	TLTS/SHWRS	225	0.25	BELT	NONE	25	234	3272	1274	1/6	1725	115	1	60	DOME	AL	RAISED CANT	18	MOTORIZED	SEE NOTES	GREENHECK GB
EXH-185	TLTS/SHWRS	450	0.25	BELT	NONE	25	468	3292	1124	1/6	1725	115	1	60	DOME	AL	RAISED CANT	18	MOTORIZED	SEE NOTES	GREENHECK GB
EXH-186	TOILETS	225	0.25	BELT	NONE	25	234	3272	1274	1/6	1725	115	1	60	DOME	AL	RAISED CANT	18	MOTORIZED	SEE NOTES	GREENHECK GB
EXH-187	TOILETS	150	0.25	BELT	NONE	25	156	2970	1014	1/6	1725	115	1	60	DOME	AL	RAISED CANT	18	MOTORIZED	SEE NOTES	GREENHECK GB
EXH-188	KITCHEN	425	0.25	BELT	NONE	25	442	3175	1084	1/6	1725	115	1	60	DOME	AL	RAISED CANT	18	MOTORIZED	SEE NOTES	GREENHECK GB
EXH-189	TLTS/INTR	685	0.25	BELT	NONE	25	713	4476	1528	1/6	1725	115	1	60	DOME	AL	RAISED CANT	18	MOTORIZED	SEE NOTES	GREENHECK GB

NOTES: 1. PROVIDE WITH EXTERIOR MOUNTED, WEATHERPROOF DISCONNECT.
2. PROVIDE WITH COMB-MAG STARTER.
3. PROVIDE WITH CURB THROAT SOUND ATTENUATOR.
4. PROVIDE WITH THERMAL OVERLOAD SWITCH.

VAV - SINGLE INLET AIR CONTROL TERMINAL SCHEDULE																				V
TAG	INLET SIZE "ø"	INLET IN WG	DELTA P IN WG	CFM RANGE		SOUND DATA		CONTROLS		HOT WATER					ACCESSORIES	BASED ON MFR/MODEL				
				MAX	MIN	DISCH NC	RAD NC	TYPE	FURNISHED BY	MBH	GPM	WPD FT	EWT	EAT			LAT			
VAV-1	6	1.0	0.5	445	285	200	<20	<20	DDC	ATC	15.4	1.0	0.3	180	55	105	SEE NOTES	TITUS DESV		
VAV-2	6	1.0	0.5	280	230	200	<20	<20	DDC	ATC	12.4	0.8	0.2	180	55	105	SEE NOTES	TITUS DESV		
VAV-3	6	1.0	0.5	335	335	335	<20	<20	DDC	ATC	18.1	1.2	0.3	180	55	105	SEE NOTES	TITUS DESV		
VAV-4	8	1.0	0.5	400	400	200	<20	<20	DDC	ATC	21.6	1.4	0.7	180	55	105	SEE NOTES	TITUS DESV		
VAV-5	6	1.0	0.5	280	280	200	<20	<20	DDC	ATC	15.1	1.0	0.2	180	55	105	SEE NOTES	TITUS DESV		
VAV-6	6	1.0	0.5	260	260	200	<20	<20	DDC	ATC	14.0	0.9	0.2	180	55	105	SEE NOTES	TITUS DESV		
VAV-7	6	1.0	0.5	330	255	105	<20	<20	DDC	ATC	9.6	0.6	0.1	180	55	90	SEE NOTES	TITUS DESV		
VAV-8	6	1.0	0.5	330	270	270	<20	<20	DDC	ATC	14.6	1.0	0.2	180	55	105	SEE NOTES	TITUS DESV		
VAV-9	6	1.0	0.5	385	340	340	<20	<20	DDC	ATC	12.9	0.9	0.1	180	55	90	SEE NOTES	TITUS DESV		
VAV-10	8	1.0	0.5	550	505	270	<20	<20	DDC	ATC	27.3	1.8	0.8	180	55	105	SEE NOTES	TITUS DESV		
VAV-11	6	1.0	0.5	380	260	200	<20	<20	DDC	ATC	14.0	0.9	0.2	180	55	105	SEE NOTES	TITUS DESV		
VAV-12	8	1.0	0.5	690	525	375	<20	<20	DDC	ATC	19.8	1.3	0.6	180	55	90	SEE NOTES	TITUS DESV		
VAV-13	6	1.0	0.5	370	260	200	<20	<20	DDC	ATC	14.0	0.9	0.2	180	55	105	SEE NOTES	TITUS DESV		
VAV-14	6	1.0	0.5	270	270	200	<20	<20	DDC	ATC	14.6	1.0	0.2	180	55	105	SEE NOTES	TITUS DESV		
VAV-15	6	1.0	0.5	270	270	200	<20	<20	DDC	ATC	14.6	1.0	0.2	180	55	105	SEE NOTES	TITUS DESV		
VAV-16	6	1.0	0.5	330	255	105	<20	<20	DDC	ATC	9.6	0.6	0.1	180	55	90	SEE NOTES	TITUS DESV		
VAV-17	6	1.0	0.5	365	255	200	<20	<20	DDC	ATC	13.8	0.9	0.2	180	55	105	SEE NOTES	TITUS DESV		
VAV-18	6	1.0	0.5	270	270	200	<20	<20	DDC	ATC	14.6	1.0	0.2	180	55	105	SEE NOTES	TITUS DESV		
VAV-19	6	1.0	0.5	415	210	200	<20	<20	DDC	ATC	11.3	0.8	0.1	180	55	105	SEE NOTES	TITUS DESV		
VAV-20	6	1.0	0.5	275	275	135	<20	<20	DDC	ATC	14.9	1.0	0.2	180	55	105	SEE NOTES	TITUS DESV		
VAV-21	8	1.0	0.5	535	535	535	<20	<20	DDC	ATC	28.9	1.9	1.2	180	55	105	SEE NOTES	TITUS DESV		
VAV-22	6	1.0	0.5	270	270	270	<20	<20	DDC	ATC	14.6	1.0	0.2	180	55	105	SEE NOTES	TITUS DESV		
VAV-23	8	1.0	0.5	515	430	405	<20	<20	DDC	ATC	23.2	1.5	0.8	180	55	105	SEE NOTES	TITUS DESV		
VAV-24	6	1.0	0.5	340	270	270	<20	<20	DDC	ATC	14.6	1.0	0.2	180	55	105	SEE NOTES	TITUS DESV		
VAV-25	8	1.0	0.5	575	325	270	<20	<20	DDC	ATC	17.6	1.2	0.5	180	55	105	SEE NOTES	TITUS DESV		
VAV-26	6	1.0	0.5	335	335	335	<20	<20	DDC	ATC	18.1	1.2	0.3	180	55	105	SEE NOTES	TITUS DESV		
VAV-27	6	1.0	0.5	305	235	200	<20	<20	DDC	ATC	12.7	0.8	0.2	180	55	105	SEE NOTES	TITUS DESV		
VAV-28	6	1.0	0.5	395	345	250	<20	<20	DDC	ATC	18.6	1.2	0.4	180	55	105	SEE NOTES	TITUS DESV		
VAV-29	8	1.0	0.5	655	480	385	<20	<20	DDC	ATC	25.9	1.7	1.0	180	55	105	SEE NOTES	TITUS DESV		
VAV-30	10	1.0	0.5	1135	1135	735	<20	<20	DDC	ATC	61.3	4.1	2.7	180	55	105	SEE NOTES	TITUS DESV		
VAV-31	8	1.0	0.5	565	390	190	<20	<20	DDC	ATC	21.1	1.4	0.7	180	55	105	SEE NOTES	TITUS DESV		
VAV-32	8	1.0	0.5	680	545	270	<20	<20	DDC	ATC	29.4	2.0	1.3	180	55	105	SEE NOTES	TITUS DESV		
VAV-33	6	1.0	0.5	455	455	145	<20	<20	DDC	ATC	24.6	1.6	0.6	180	55	105	SEE NOTES	TITUS DESV		
VAV-34	8	1.0	0.5	550	480	260	<20	<20	DDC	ATC	25.9	1.7	1.0	180	55	105	SEE NOTES	TITUS DESV		

NOTES: 1. PROVIDE WITH 2-ROW RE-HEAT COIL
2. PROVIDE WITH INTEGRAL SOUND ATTENUATOR
3. PROVIDE WITH HOSPITAL GRADE LINER

EXPANSION TANK SCHEDULE					ET
TAG	TANK VOLUME (GAL)	TANK DIMENSIONS (DIA. X H)	REMARKS	BASED ON MFR/MODEL	
ET-1	33.6	16 x 42-1/4		ARMSTRONG AX	

DUCT HEATING COIL SCHEDULE													DH
TAG	TOTAL AIRFLOW CFM	MOUNTING TYPE	FIN LENGTH	FIN WIDTH	EAT °F	LAT °F	TOTAL MBH	APD IN WG	WATER COIL			REMARKS	Based On MFR/Model
									EWT °F	TD °F	WPD FT		
DH-1	200	VERTICAL	12	6	55	90	8.7	.2					USA Coil F2-08
DH-2	335	VERTICAL	12	9	55	90	14.6	.2					USA Coil F2-08
DH-3	200	VERTICAL	12	6	55	90	8.7	.2					USA Coil F2-08
DH-4	650	VERTICAL	18	12	55	90	28.3	.2					USA Coil F2-08
DH-5	180	VERTICAL	12	6	55	90	7.8	.2					USA Coil F2-08
DH-6	425	VERTICAL	15	9	55	90	18.5	.2					USA Coil F2-08
DH-7	3525	VERTICAL	48	21	55	90	153.2	.2					USA Coil F2-08

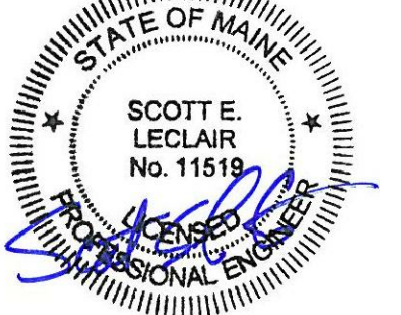
NOTES: 1. COIL SHALL BE 2-ROW ASSEMBLY

PRESSURE REDUCING & RELIEF VALVE SCHEDULE							
TAG	SERVICE	INLET PRESSURE PSIG	OUTLET PRESSURE PSIG	FLOW RATE LB/HR	NOMINAL SIZE (IN.)	OUTLET SIZE (IN.)	MANUFACTURER & MODEL NO.
PRV-1	LPS HEADER	80	15	1308	2	4	SARCO

NOTES: 1. ALL VALVES WITH NOISE SUPPRESSOR
2. PROVIDE MANUFACTURER'S INSULATED JACKET OPTION

REGISTER, GRILLE AND DIFFUSER SCHEDULE								R-G-D
TAG	TYPE	MOUNTING	FACE TYPE	FACE BAR	DAMPER	MTL	REMARKS	BASED ON MFR/MODEL
SD-A	SUPPLY	CEILING	LOUVERED		-	ALUM	NOTES 1, 2, 3	TITUS TDC
SG-S	SUPPLY	CEILING	PERF.		-	STEEL	NOTES 1, 2, 3, 4	ANEMOSTAT RRMX
RG-A	RETURN	CEILING	RECT.	35 DEG. DEFL.	-	ALUM	NOTES 1, 2, 3	TITUS 350FL
RG-S	RETURN	CEILING	PERF.		-	STEEL	NOTES 1, 2, 3, 4	ANEMOSTAT RRMX
EG-A	EXHAUST	CEILING	RECT.	35 DEG. DEFL.	-	ALUM	NOTES 1, 2, 3	TITUS 350FL
EG-S	EXHAUST	CEILING	PERF.		-	STEEL	NOTES 1, 2, 3, 4	ANEMOSTAT RRMX

NOTES: 1. COORDINATE FINISH WITH ARCHITECT
2. SEE PLAN FOR NECK SIZE AND DISCHARGE PATTERN
3. COORDINATE MOUNTING TO SUIT ARCHITECTS CEILING PLAN
4. PROVIDE WITH ANGLE FRAME MOUNTS



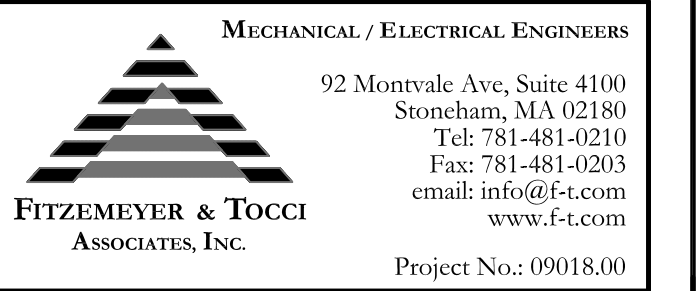
Seals

BECKER
structural engineers, inc.

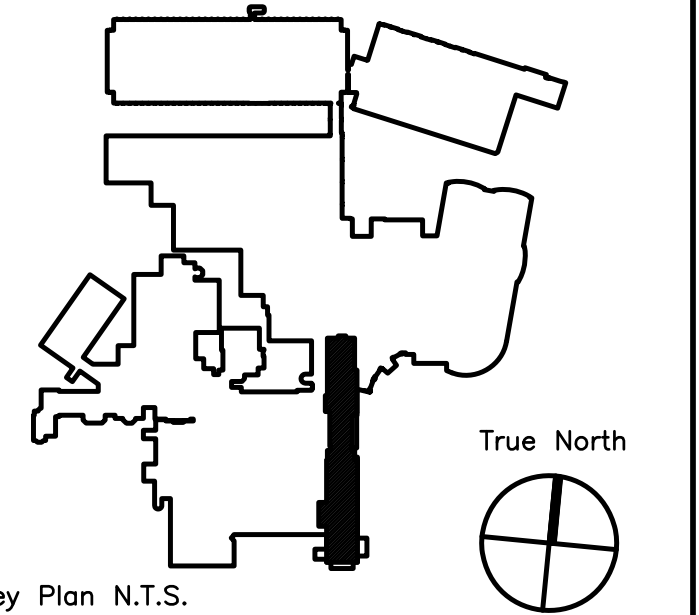
75 York Street
Portland, ME 04101-4701
info@beckerstructural.com

Tel 207-879-1838
Fax 207-879-1822
www.beckerstructural.com

Consultant



Consultant



ADDENDUM#1	12/4/09	1
Revision	Date	No



MAINE MEDICAL CENTER
PAVILION 6 RENOVATIONS

MorrisSwitzer Project Number 28034
Date 11/19/09
Scale N.T.S.
Sheet Title and Number

SIXTH FLOOR PAVILIONS "A" & "C" MECHANICAL SCHEDULES

3M3.1

