

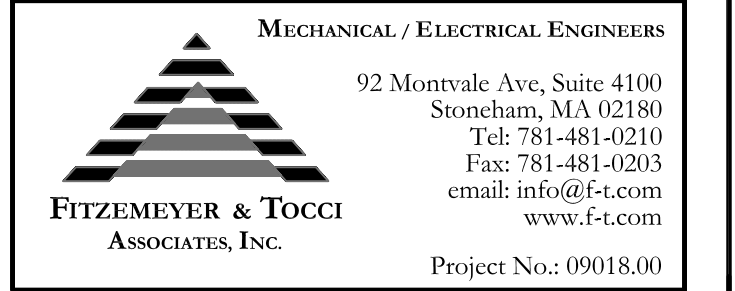


Seals

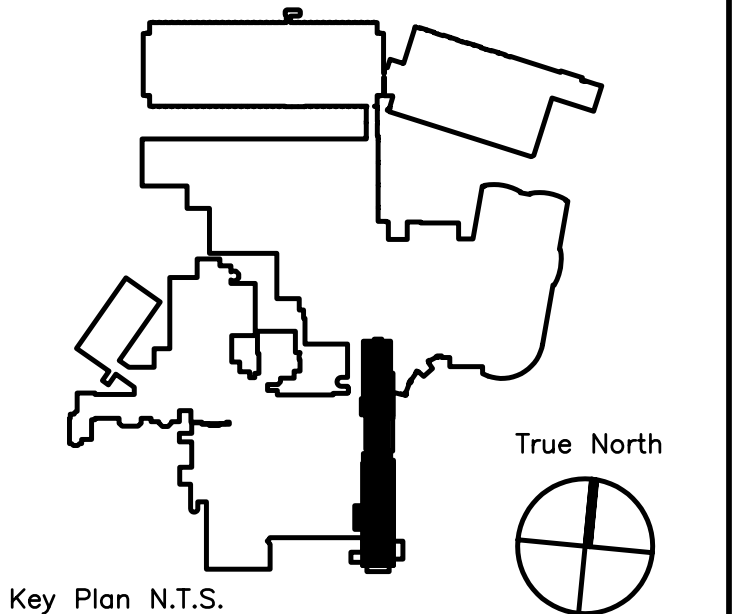
BECKER
structural engineers, inc.

75 York Street Tel 207-879-1838
Portland, ME 04101-4701 Fax 207-879-1822
info@beckerstructural.com www.beckerstructural.com

Consultant



Consultant



ADDENDUM#1	12/4/09	1
Revision	Date	No

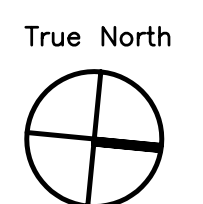


Maine Medical Center
Portland, Maine

MAINE MEDICAL CENTER
PAVILION 6 RENOVATIONS

MorrisSwitzer Project Number 28034
Date 11/19/09
Scale NOT TO SCALE
Sheet Title and Number

SIXTH FLOOR PAVILIONS
"A" & "C" FIRE PROTECTION LEGEND, NOTES AND SCHEDULE **3FP0.0**



VALVE LEGEND

	GV	GATE VALVE
	F.D.V.	FIRE DEPARTMENT VALVE
	F.V.C.	FIRE VALVE AND CABINET
	BV	BALL VALVE
	BFV	BUTTERFLY VALVE
	DV	DRAIN VALVE
	CV	CHECK VALVE
	UNION	UNION
	FLG	FLANGE
	CRD	CONCENTRIC REDUCER (ENLARGER)
	ERD	ECCENTRIC REDUCER (ENLARGER)
	PG	PRESSURE GAUGE
	FSW	FLOW SWITCH
	AN	PIPE ANCHOR
	FIRE DEPARTMENT CONNECTION	FIRE DEPARTMENT CONNECTION
	PFC	PIPE FLEXIBLE CONNECTION

PIPING LEGEND

	FP	FIRE PROTECTION
	SP	SPRINKLER
	DS	DRY SPRINKLER
	PA	PRE-ACTION
	D.R.	DRAIN RISER
		PIPING TO BE REMOVED
		EXISTING PIPING TO REMAIN
	FS	FLOW SWITCH
		FIRE HOSE CABINET (SURFACE MOUNTED)
		FIRE HOSE CABINET (RECESSED)
	SB	SLEEVE BEAM
		RUN-OUT OFF TOP
		RUN-OUT OFF BOTTOM
		PIPE UP
		PIPE DOWN
		CAP ON END OF PIPE
		PIPE BREAK
		DISCONNECT AND REMOVE EXISTING PENDANT SPRINKLER, EXTEND AND CONNECT NEW 1" PIPE TO NEW SPRINKLER.

GENERAL NOTES

- FIRE PROTECTION SYSTEM AS SHOWN IS DIAGRAMMATIC AND FOR REFERENCE ONLY. DRAWINGS SHOW A SUGGESTED PIPING ROUTE ONLY. FIRE PROTECTION CONTRACTOR MAY ALTER PIPING ROUTE AND SPRINKLER HEAD LOCATIONS WITH APPROVAL OF ENGINEER.
- SPRINKLER LOCATIONS ARE FOR REFERENCE ONLY. FIRE PROTECTION CONTRACTOR SHALL INSURE THAT PROPOSED FIRE PROTECTION DESIGN MEETS ALL REQUIREMENTS OF NFPA-13 INCLUDING ADEQUATE COVERAGE OF SPRINKLERS.
- FIRE PROTECTION CONTRACTOR SHALL INSTALL NEW PIPING TAKE-OFFS WHERE NECESSARY TO PROVIDE ADEQUATE COVERAGE OR TO AVOID SUSPENDED CEILING FRAMING.
- ALL PIPING CUT DURING DEMOLITION PHASE SHALL BE CAPPED WHETHER INDICATED ON DRAWING OR NOT.
- FIRE PROTECTION CONTRACTOR SHALL PROVIDE ALL TEMPORARY CONNECTIONS REQUIRED TO MAINTAIN OPERATION OF EXISTING FIRE PROTECTION SYSTEM.
- SPRINKLER SYSTEM HYDRAULICALLY DESIGNED TO PROVIDE AT LEAST 0.10 GPM/SQ. FT FOR ALL AREAS EXCEPT MECHANICAL AND STORAGE ROOMS, INCLUDING HYDRAULICALLY MOST REMOTE 1500 SQ. FT. OF FLOOR AREA FOR LIGHT HAZARD OCCUPANCY, MECHANICAL AND STORAGE ROOMS SHALL BE DESIGNED FOR ORDINARY HAZARD OCCUPANCY OR AS REQUIRED BY OWNER'S INSURANCE UNDERWRITER.
- THE CONTRACTOR SHALL FURNISH LABOR, MATERIALS, TOOLS AND OTHER EQUIPMENT REQUIRED TO INSTALL THE WORK SHOWN AND SPECIFIED. THE CONTRACTOR SHALL FURNISH AND INSTALL ITEMS NECESSARY FOR COMPLETE FIRE PROTECTION SYSTEM. MATERIALS SHALL BE NEW AND SHALL BEAR THE REGISTERED UL/FM MARK. WORK SHALL CONFORM WITH THE NATIONAL FIRE PROTECTION ASSOCIATION STANDARD 13 AND APPLICABLE FEDERAL, STATE AND LOCAL CODES. CONTRACTOR SHALL SECURE PERMITS AND PAY THE FEES REQUIRED TO CARRY OUT HIS WORK. THE CONTRACTOR SHALL FURNISH COPIES OF CERTIFICATES AND PERMITS TO THE ARCHITECT.
- PIPE ROUTING IS SHOWN DIAGRAMMATICALLY ON FIRE PROTECTION DRAWINGS AND SHALL BE ADJUSTED FOR ARCHITECTURAL, STRUCTURAL, MECHANICAL AND ELECTRICAL CLEARANCES AND LIMITATIONS AND FOR EQUIPMENT SELECTION. FURNISH AND INSTALL ALL ELEMENTS REQUIRED TO COMPLETE INTENDED PIPING SYSTEMS WHETHER OR NOT THESE ELEMENTS ARE SPECIFICALLY SHOWN ON THE DRAWINGS OR CALLED FOR IN THE SPECIFICATIONS.
- CONSULT ALL DRAWINGS, NOTE ARCHITECTURAL DETAILS AND ALL CONDITIONS THAT MAY AFFECT THE WORK AND CARE FOR SAME, WHILE EXECUTING THE WORK UNDER THIS SECTION. COOPERATE AND COORDINATE WITH THE ARCHITECT, ALL OTHER TRADES, BUILDING MANAGEMENT AND THE OWNER.
- ALL WORK SHALL CONFORM TO ALL APPLICABLE FEDERAL, STATE, AND LOCAL CODES AND REGULATIONS.
- IN EVENT OF CONFLICT BETWEEN OR AMONG SPECIFIED REQUIREMENTS AND PERTINENT CODES OR REGULATIONS, MORE STRINGENT REQUIREMENTS SHALL GOVERN.
- TAKE ALL MEASURES REQUIRED TO PROTECT OWNER'S PROPERTY AND EQUIPMENT DURING COURSE OF WORK. SHOULD DAMAGE TO OWNER'S PROPERTY OR EQUIPMENT OCCUR, REPAIR DAMAGE PROMPTLY AT NO COST TO OWNER.
- INSTALL ALL EQUIPMENT AND MATERIALS IN STRICT CONFORMANCE WITH EQUIPMENT AND MATERIALS MANUFACTURERS' WRITTEN RECOMMENDATIONS.
- LOCATE PIPES TO FALL WITHIN PARTITIONS, WALLS, OR ROOF CAVITIES AND TO PRECLUDE FURRING, OTHER THAN THAT SHOWN ON ARCHITECTURAL DRAWINGS.
- ALL FIRE PROTECTION EQUIPMENT, VALVES, ETC. SHALL BE INSTALLED WITH CLEARANCE FOR SERVICING AS RECOMMENDED BY THE MANUFACTURER.

DRAWING NOTES

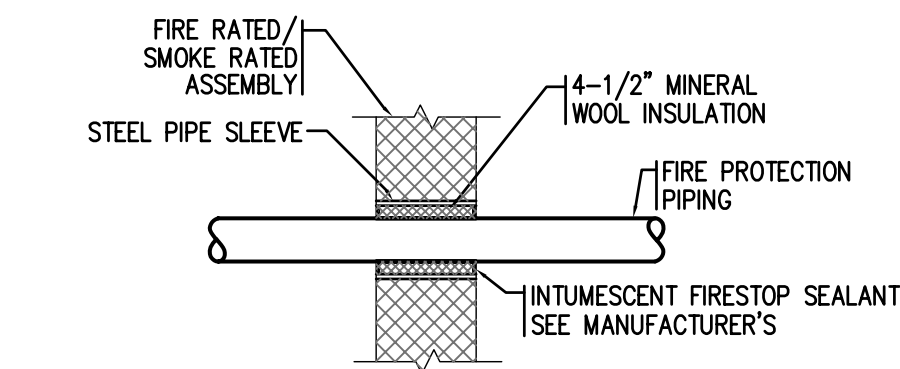
	DRAWING WORK NOTE
	DRAWING WORK NOTE
	HYDRAULIC CALCULATION NODE
	CONNECT TO EXISTING
	CAP EXISTING
	LIMIT OF DEMOLITION
	DRAWING REVISION DESIGNATION
	REVISION CLOUD

FIRE PROTECTION EQUIPMENT COORDINATION

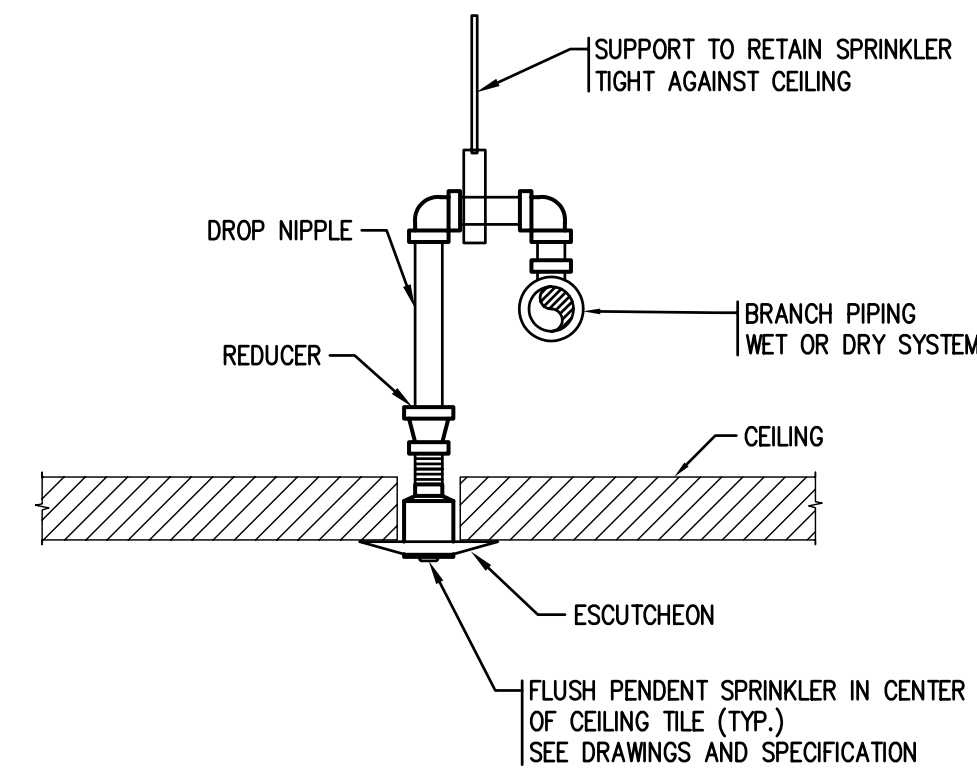
* FIRE PROTECTION CONTRACTOR SHALL REFER TO THE ARCHITECTURAL, PLUMBING, MECHANICAL, AND ELECTRICAL DRAWINGS AND SPECIFICATIONS FOR LOCATIONS AND QUANTITIES OF EQUIPMENT RELEASED TO EACH TRADE.

FIRE PROTECTION DRAWING LIST

DRAWING NO.	DRAWING TITLE
1FP0.0	FIRE PROTECTION PAVILION "A" INTERIM OCCUPANCY PLAN
2FP1.0	FIRE PROTECTION PAVILION "C" AND "D" INTERIM OCCUPANCY PLAN
3FP0.0	FIRE PROTECTION LEGEND, NOTES AND SCHEDULE
3FP1.0	FIRE PROTECTION DEMOLITION FLOOR PLAN
3FP2.0	FIRE PROTECTION NEW WORK FLOOR PLAN



FIRESTOPPING METHOD BASED ON HILTI UL SYSTEM W1058. REFER TO MFG LITERATURE FOR SPECIFIC PRODUCT LIMITATIONS. SUBSTITUTE OTHER UL APPROVED FIRESTOPPING METHODS, IF NECESSARY, TO MEET REQUIREMENTS OF INSTALLATION



PROVIDE SPRINKLER IN P-6 UNIT SECURITY SAFE AREAS.

PIPE PENETRATION THRU FIRE RATED/SMOKE RATED ASSEMBLY

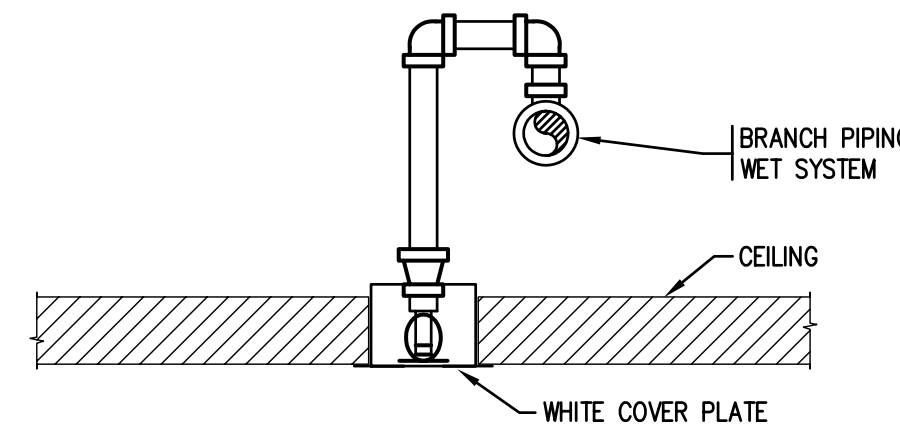
NO SCALE
FP-600

INST. FLUSH PENDANT SPRINKLER PIPING DETAIL

NO SCALE
FP-506B

ABBREVIATIONS

B.F.P.	BACK FLOW PREVENTER
CI	CAST IRON
CONTR	CONTRACTOR
CLDI	CEMENT LINED DUCTILE IRON
DN	DOWN
D. & R.	DISCONNECT AND REMOVE
DWG	DRAWING
E.A.	EACH
E.T.R.	EXISTING TO REMAIN
EX.	EXISTING
F.B.O.C.	FURNISHED BY OTHER CONTRACTOR
NIC	NOT IN CONTRACT
NTS	NOT TO SCALE
O.S.&Y.	OUTSIDE SCREW AND YOKE
PSI	POUNDS PER SQUARE INCH
RM	ROOM
TB	THRUST BLOCK
TS	TAMPER SWITCH
SD	STORM DRAIN



CONCEALED PENDANT SPRINKLER HEAD DIAGRAM

NO SCALE
FP-506

SCHEDULES

SPRINKLER SCHEDULE

SYMBOL	MFG.	MODEL NO.	STYLE	LOCATION/ ROOM NO.	ORIFICE SIZE	K FACTOR	TEMPERATURE RATING	SPRINKLER FINISH	ESCUTCHEON FINISH	COATING	REMARKS
○	RELIABLE	F1FR	UPRIGHT	REFER TO DRAWINGS	1/2"	5.6	ORD.	CHROME	CORROSION RESISTANT	-	PROVIDE SPRINKLER IN COMMON SPACES WITHOUT CEILINGS.
●	TYCO	RAVEN TY3281	PENDENT	REFER TO DRAWINGS	1/2"	5.6	ORD.	CHROME	CHROME	-	PROVIDE SPRINKLER IN PATIENT ROOMS AND SECURED AREAS INDICATED.
⊗	RELIABLE	G4A	CONCEALED CLG PENDENT	REFER TO DRAWINGS	1/2"	5.6	ORD.	CHROME	WHITE COVER PLATE	-	PROVIDE IN OFFICE AND COMMON AREAS AS INDICATED.
◁	TYCO	RAVEN TY3281	SIDEWALL STYLE F	REFER TO DRAWINGS	1/2"	5.6	ORD.	CHROME	CHROME	-	PROVIDE SPRINKLER IN SKYLIGHT INDICATED.