

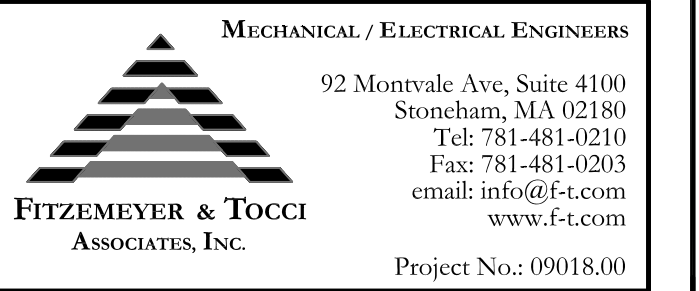
Seals

**BECKER**  
structural engineers, inc.

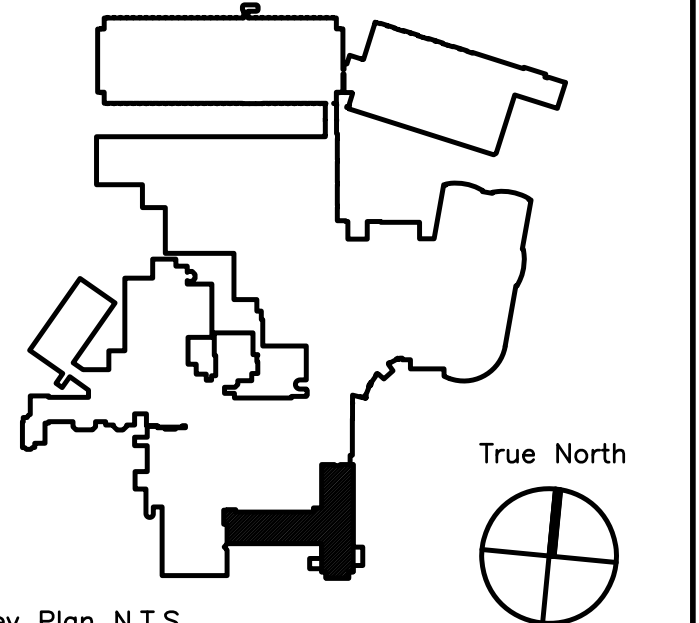
75 York Street  
Portland, ME 04101-4701  
info@beckerstructural.com

Tel 207-879-1838  
Fax 207-879-1822  
www.beckerstructural.com

Consultant



Consultant



Key Plan N.T.S.

ADDENDUM#	Date	No
1	12/4/09	1
Revision		



Maine Medical Center  
Portland, Maine

**MAINE MEDICAL CENTER**  
PAVILION 6 RENOVATIONS

MorrisSwitzer Project Number 28034  
Date 11/19/09  
Scale 1/8" = 1'-0"

Sheet Title and Number  
**SECOND FLOOR  
PAVILION "C" & "D"  
INTERIM OCCUPANCY  
ELECTRICAL PLAN  
2E1.0**

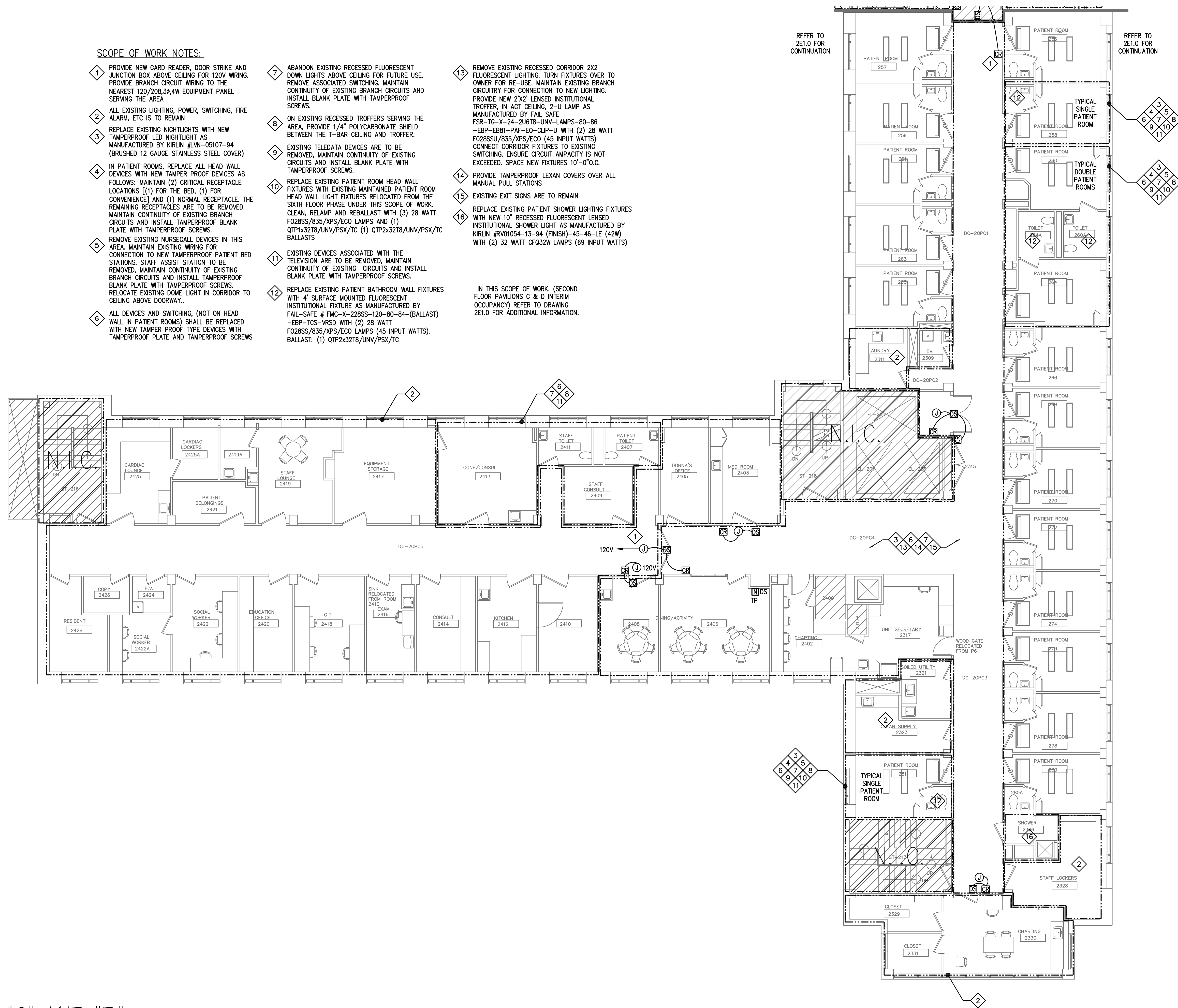
**SCOPE OF WORK NOTES:**

- 1 PROVIDE NEW CARD READER, DOOR STRIKE AND JUNCTION BOX ABOVE CEILING FOR 120V WIRING. PROVIDE BRANCH CIRCUIT WIRING TO THE NEAREST 120/208,3Ø,4W EQUIPMENT PANEL SERVING THE AREA
- 2 ALL EXISTING LIGHTING, POWER, SWITCHING, FIRE ALARM, ETC IS TO REMAIN
- 3 REPLACE EXISTING NIGHTLIGHTS WITH NEW TAMPERPROOF LED NIGHTLIGHT AS MANUFACTURED BY KIRLIN #LW-05107-94 (BRUSHED 12 GAUGE STAINLESS STEEL COVER)
- 4 IN PATIENT ROOMS, REPLACE ALL HEAD WALL DEVICES WITH NEW TAMPER PROOF DEVICES AS FOLLOWS: MAINTAIN (2) CRITICAL RECEPTACLE LOCATIONS [(1) FOR THE BED, (1) FOR CONVENIENCE] AND (1) NORMAL RECEPTACLE. THE REMAINING RECEPTACLES ARE TO BE REMOVED. MAINTAIN CONTINUITY OF EXISTING BRANCH CIRCUITS AND INSTALL TAMPERPROOF BLANK PLATE WITH TAMPERPROOF SCREWS.
- 5 REMOVE EXISTING NURSECALL DEVICES IN THIS AREA. MAINTAIN EXISTING WIRING FOR CONNECTION TO NEW TAMPERPROOF PATIENT BED STATIONS. STAFF ASSIST STATION TO BE REMOVED. MAINTAIN CONTINUITY OF EXISTING BRANCH CIRCUITS AND INSTALL TAMPERPROOF BLANK PLATE WITH TAMPERPROOF SCREWS. RELOCATE EXISTING DOME LIGHT IN CORRIDOR TO CEILING ABOVE DOORWAY..
- 6 ALL DEVICES AND SWITCHING, (NOT ON HEAD WALL IN PATIENT ROOMS) SHALL BE REPLACED WITH NEW TAMPER PROOF TYPE DEVICES WITH TAMPERPROOF PLATE AND TAMPERPROOF SCREWS
- 7 ABANDON EXISTING RECESSED FLUORESCENT DOWN LIGHTS ABOVE CEILING FOR FUTURE USE. REMOVE ASSOCIATED SWITCHING. MAINTAIN CONTINUITY OF EXISTING BRANCH CIRCUITS AND INSTALL BLANK PLATE WITH TAMPERPROOF SCREWS.
- 8 ON EXISTING RECESSED TROFFERS SERVING THE AREA, PROVIDE 1/4" POLYCARBONATE SHIELD BETWEEN THE T-BAR CEILING AND TROFFER.
- 9 EXISTING TELEDATA DEVICES ARE TO BE REMOVED, MAINTAIN CONTINUITY OF EXISTING CIRCUITS AND INSTALL BLANK PLATE WITH TAMPERPROOF SCREWS.
- 10 REPLACE EXISTING PATIENT ROOM HEAD WALL FIXTURES WITH EXISTING MAINTAINED PATIENT ROOM HEAD WALL LIGHT FIXTURES RELOCATED FROM THE SIXTH FLOOR PHASE UNDER THIS SCOPE OF WORK. CLEAN, RELAMP AND REBALLAST WITH (3) 28 WATT F028SS/835/XPS/ECO LAMPS AND (1) QTP1x32T8/UNV/PSX/TC (1) QTP2x32T8/UNV/PSX/TC BALLASTS
- 11 EXISTING DEVICES ASSOCIATED WITH THE TELEVISION ARE TO BE REMOVED, MAINTAIN CONTINUITY OF EXISTING CIRCUITS AND INSTALL BLANK PLATE WITH TAMPERPROOF SCREWS.
- 12 REPLACE EXISTING PATIENT BATHROOM WALL FIXTURES WITH 4' SURFACE MOUNTED FLUORESCENT INSTITUTIONAL FIXTURE AS MANUFACTURED BY FAIL-SAFE # FMC-X-228SS-120-80-84-(BALLAST) -EBP-TCS-VRSO WITH (2) 28 WATT F028SS/835/XPS/ECO LAMPS (45 INPUT WATTS). BALLAST: (1) QTP2x32T8/UNV/PSX/TC
- 13 REMOVE EXISTING RECESSED CORRIDOR 2X2 FLUORESCENT LIGHTING. TURN FIXTURES OVER TO OWNER FOR RE-USE. MAINTAIN EXISTING BRANCH CIRCUITRY FOR CONNECTION TO NEW LIGHTING. PROVIDE NEW 2'X2' LENSED INSTITUTIONAL TROFFER. IN ACT CEILING, 2-U LAMP AS MANUFACTURED BY FAIL SAFE FSR-TG-X-24-2U6T8-UNV-LAMPS-80-86 -EBP-EBB1-PAF-EO-CLIP-U WITH (2) 28 WATT F028SSU/835/XPS/ECO (45 INPUT WATTS) CONNECT CORRIDOR FIXTURES TO EXISTING SWITCHING. ENSURE CIRCUIT AMPACITY IS NOT EXCEEDED. SPACE NEW FIXTURES 10'-0"O.C.
- 14 PROVIDE TAMPERPROOF LEXAN COVERS OVER ALL MANUAL PULL STATIONS
- 15 EXISTING EXIT SIGNS ARE TO REMAIN
- 16 REPLACE EXISTING PATIENT SHOWER LIGHTING FIXTURES WITH NEW 10" RECESSED FLUORESCENT LENSED INSTITUTIONAL SHOWER LIGHT AS MANUFACTURED BY KIRLIN #RVO1054-13-94 (FINISH)-45-46-LE (42W) WITH (2) 32 WATT CFQ32W LAMPS (69 INPUT WATTS)

IN THIS SCOPE OF WORK, (SECOND FLOOR PAVILIONS C & D INTERIM OCCUPANCY) REFER TO DRAWING 2E1.0 FOR ADDITIONAL INFORMATION.

REFER TO 2E1.0 FOR CONTINUATION

REFER TO 2E1.0 FOR CONTINUATION



PAVILION "C" AND "D"

