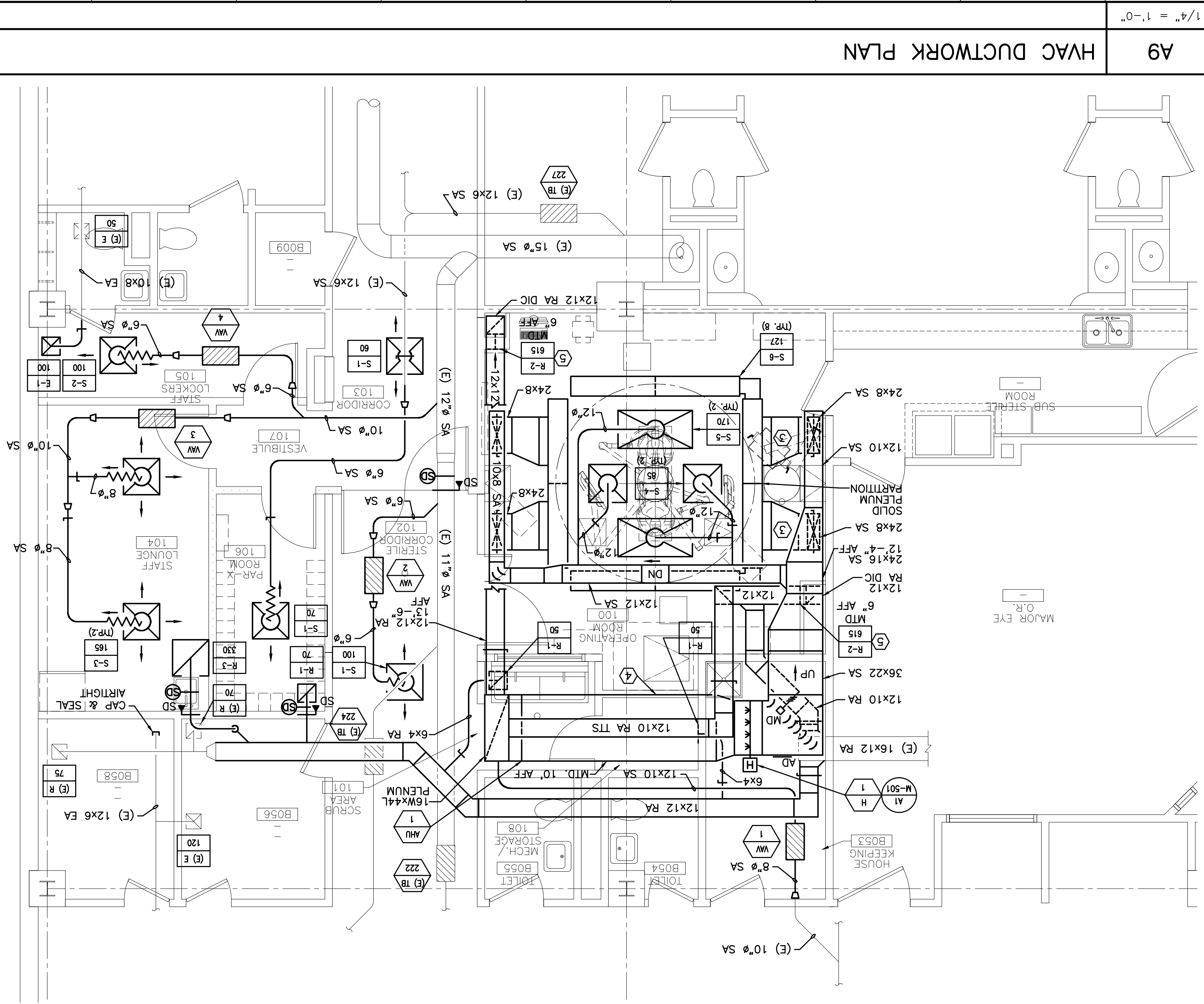


A9 HVAC DUCTWORK DEMOLITION PLAN

1/4" = 1'-0"



A9 HVAC DUCTWORK PLAN

1/4" = 1'-0"

NOTES:

- SEE M-001 FOR LEGEND AND ABBREVIATIONS.
- ALL DUCTWORK AND DUCT ACCESSORIES SERVING OPERATING ROOM TO BE STAINLESS STEEL.

KEYED NOTES:

- DISCONNECT SMOKE DAMPER OPERATOR AND LOCK DAMPER OPEN.
- REMOVE WALL MOUNTED EXHAUST GRILLES & DUCT DROPS (TYP).
- REMOVE WALL MOUNTED EXHAUST GRILLES & DUCT DROPS (TYP).
- SUPPLY TO COMMON PLENUM SERVING THREE PERIMETER DIFFUSERS.
- MAINTAIN CLEARANCE FOR FILTER REMOVAL AND SERVICING.
- AHU-1.
- RETURN AIRFLOW QUANTITY ALLOWS FOR 300 CFM LEAKAGE THROUGH ROOM ENVELOPE. ADJUST AIRFLOW AMOUNT DURING BALANCING TO ACHIEVE POSITIVE 0.01 IN. WG. ROOM PRESSURIZATION.

PROJECT:
MAINE MEDICAL CENTER
O.R. RENOVATION
 Portland, Maine

ARCHITECTURE ENGINEERING PLANNING
SM RT
 144 Fore Street/P.O. Box 618
 Portland, Maine 04104
 Tel. (207) 773-3846
 Fax. (207) 773-1070

PROJECT NORTH

ISSUED FOR CONSTRUCTION
7-29-04

CURRENT ISSUE STATUS:

REV.	DESCRIPTION	DATE
0	ISSUED FOR CONSTRUCTION	7-29-04

PROJECT TITLE:
DEMOLITION AND
HVAC PLANS

SCALE: AS NOTED
DATE: 7-29-04

PROJECT MANAGER: C.F.G.
GRAPHIC SCALE: 0' 1'

JOB CAP/PRMWRN: SOL/BGG
A/E OF RECORD: LPA

SMART CAD FILE: M-101-03122
PROJECT NO.: 03122

PROJECT: M-101