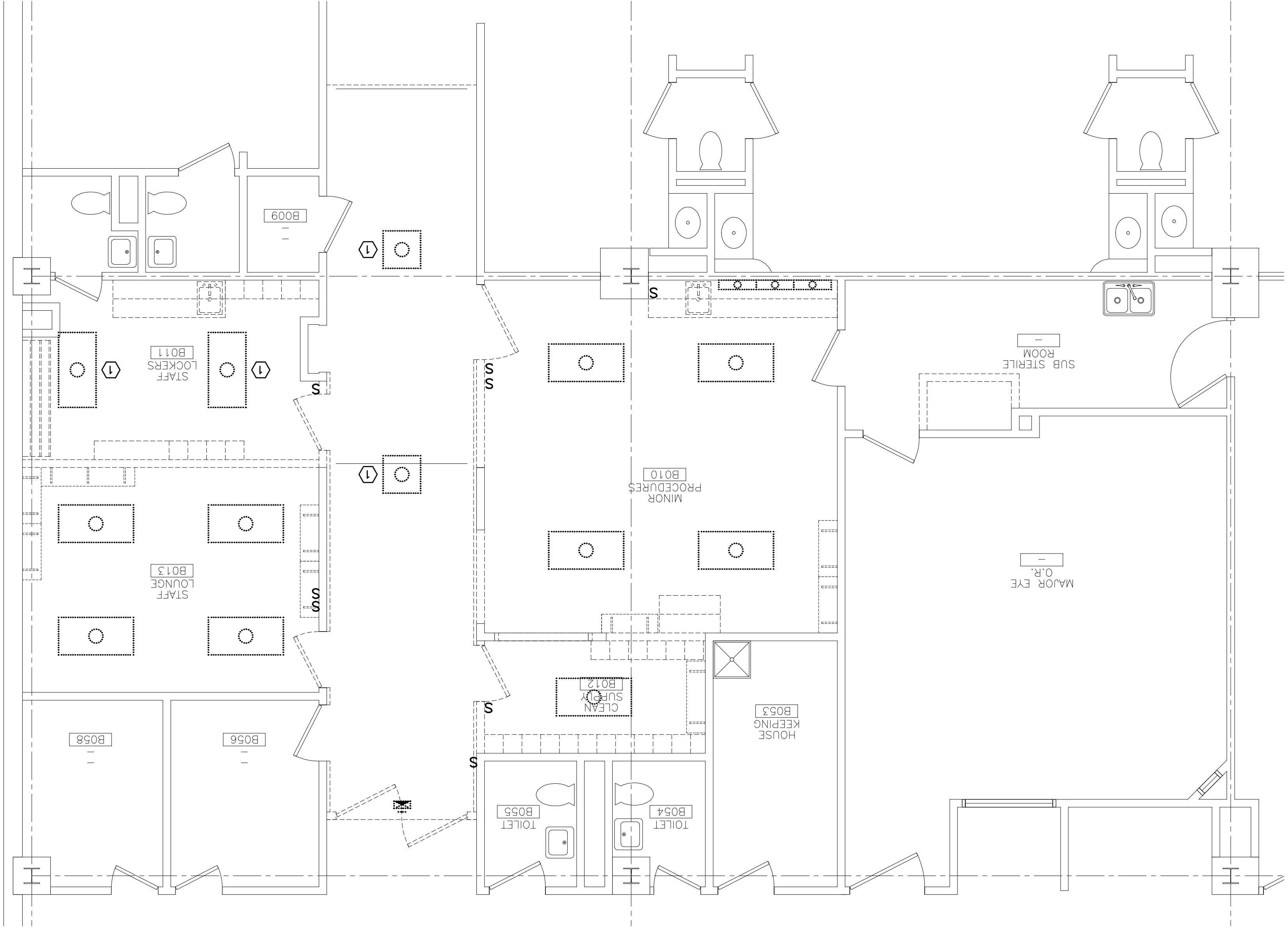


J7 POWER & SYSTEMS DEMOLITION FLOOR PLAN

1/4" = 1'-0"



A7 LIGHTING DEMOLITION FLOOR PLAN

1/4" = 1'-0"

NOTE:
 1. SEE SHEET E-001 FOR LEGEND AND GENERAL NOTES.
KEYED NOTE:
 ① NEW LOCATION.
 ② EXISTING FEATURE TO BE RELOCATED, SEE SHEET EP101 FOR

REV.	DESCRIPTION	DATE
0	ISSUED FOR CONSTRUCTION	7-27-04

ISSUED FOR CONSTRUCTION
7-27-04



SM RT
 ARCHITECTURE ENGINEERING PLANNING
 SMART
 144 Fore Street, P.O. Box 618
 Portland, Maine 04104
 Tel. (207) 772-3846
 Fax. (207) 772-1070

MAINE MEDICAL CENTER
O.R. RENOVATION
 Portland, Maine

POWER AND LIGHTING
DEMOLITION FLOOR PLANS

ED101
 SHEET No.
 PROJECT No. 03122
 SMART CAD FILE: ED101-03122
 A/E OF RECORD: CFG
 JOB CAP/PRMWR: SDL/SDL
 PROJECT MANAGER: CFG
 GRAPHIC SCALE: 0'
 SCALE: 1/4" = 1'-0"
 DATE: 7-27-04