

DIRECTORY	KVA LOAD			CCT. NO.	BRG. AMPS	A	B	C	BRG. AMPS	CCT. NO.	KVA LOAD			DIRECTORY
	A	B	C								A	B	C	
CATH LAB 5 VIA UTS	*	*	*	1	50	•	•	•	50	4	*	*	*	SPARE - FUTURE
SPACE	*	*	*	5		•	•	•		6	*	*	*	
SPACE	*	*	*	7		•	•	•		8	*	*	*	SPACE
SPACE	*	*	*	9		•	•	•		10	*	*	*	SPACE
SPACE	*	*	*	11		•	•	•		12	*	*	*	SPACE
	*	*	*	13		•	•	•		14	*	*	*	
	*	*	*	15		•	•	•		16	*	*	*	
	*	*	*	17		•	•	•		18	*	*	*	
	*	*	*	19		•	•	•		20	*	*	*	
	*	*	*	21		•	•	•		22	*	*	*	
	*	*	*	23		•	•	•		24	*	*	*	
	*	*	*	25		•	•	•		26	*	*	*	
	*	*	*	27		•	•	•		28	*	*	*	
	*	*	*	29		•	•	•		30	*	*	*	
SUB-TOTAL	*	*	*								*	*	*	
NEUTRAL BUS					GROUND BUS									
VOLTAGE:	480Y/277V			3 PHASE	4 WIRE	125 AMP BUS	TOTAL KVA A			*	PANEL NO.	UPS DP		
MAIN BREAKER				125 AMP TRIP	TOTAL KVA B			*	LOCATION	UPS 12				
MOUNTING:	SURFACE			TOTAL KVA C			*							
SC RATING:	10,000 AC			TOTAL KVA			*							
NOTES:	PROVIDE WITH SHUNT TRIP. COORDINATE VOLTAGE AS REQUIRED.													

**NOTE:**

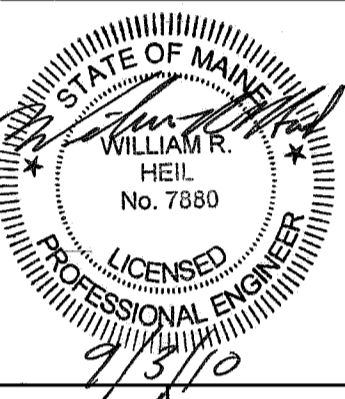
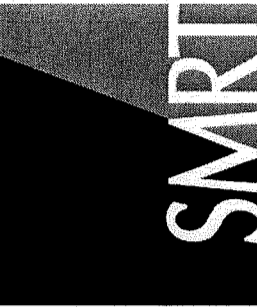
- SEE E-001 FOR LEGEND AND GENERAL NOTES.

**KEYED NOTES:**

- REMOVE EXISTING BREAKER(S) SERVING CATH LAB #5.
- REMOVE EXISTING FEEDER CONDUCTORS (4#1/0 & #1/0 GND) BETWEEN PANEL XDP AND 150A SHUNT TRIP BREAKERS. 1 1/2" CONDUIT REMAINS.
- REMOVE EXISTING 150A SHUNT TRIP BREAKERS IN CATH LAB 5 ROOM.
- REMOVE FEEDERS BETWEEN BREAKER AND EXISTING CATH LAB 5 "P.D.U.'S.
- PDU AND CATH LAB 5 MEDICAL EQUIPMENT REMOVED BY OTHERS.
- PROVIDE ONE 125 AMP, 3 POLE CIRCUIT BREAKERS WITH SHUNT TRIP. COORDINATE SHUNT TRIP VOLTAGE AS REQUIRED.
- EXISTING 1 1/2" CONDUIT WITH NEW 3#3/0 & #1 GND.
- PROVIDE FITTINGS TO CONNECT EXISTING CONDUIT TO NEW.
- NEW FEEDER (3#3/0 & #1 GND, 1 1/2")
- NEW FEEDER (4#4 & #8 GND, 1 1/2")
- PROVIDE ONE 80 AMP, 3 POLE CIRCUIT BREAKER.
- NEW FEEDER (4#6 & #8 GND, 1")
- EQUIPMENT FURNISHED BY PHIPPS.
- NEW FEEDER (4#1 & #6 GND, 1 1/2")
- NEW FEEDER AND CONTROLS (3#1, 1 1/4" C AND 3#10, 3/4")
- NEW FEEDER AND CONTROLS (3#10, 3/4" AND 6#14, 3/4").
- NEW FEEDER & CONTROLS (2-250 KCMIL, #1 GND & 4#14 CONTROL, 2" FLEXIBLE CONDUIT).
- 2#14, 1/2" C FOR SHUNT TRIP OPERATION, VIA EXISTING "EMERGENCY OFF" BUTTONS IN CATH LAB 5 AND CONTROL ROOM. PROVIDE POWER FOR SHUNT TRIP AS REQUIRED.
- PROVIDE 8" TAIL OF CONDUCTORS AT EACH EQUIPMENT CONNECTION. COORDINATE FINAL CONNECTIONS WITH PHIPPS.
- EXISTING 1 1/2" CONDUIT WITH NEW 4#4 & #8 GND.

144 Fore Street, P.O. Box 618  
Portland, Maine 04104  
Tel: (207) 772-2846  
Fax: (207) 772-1070  
www.smri.com

ARCHITECTURE  
ENGINEERING  
PLANNING  
INTERIOR DESIGN  
COMMISSIONING



Maine Medical Center Cath Lab 5

ISSUED FOR CONSTRUCTION  
9.3.10

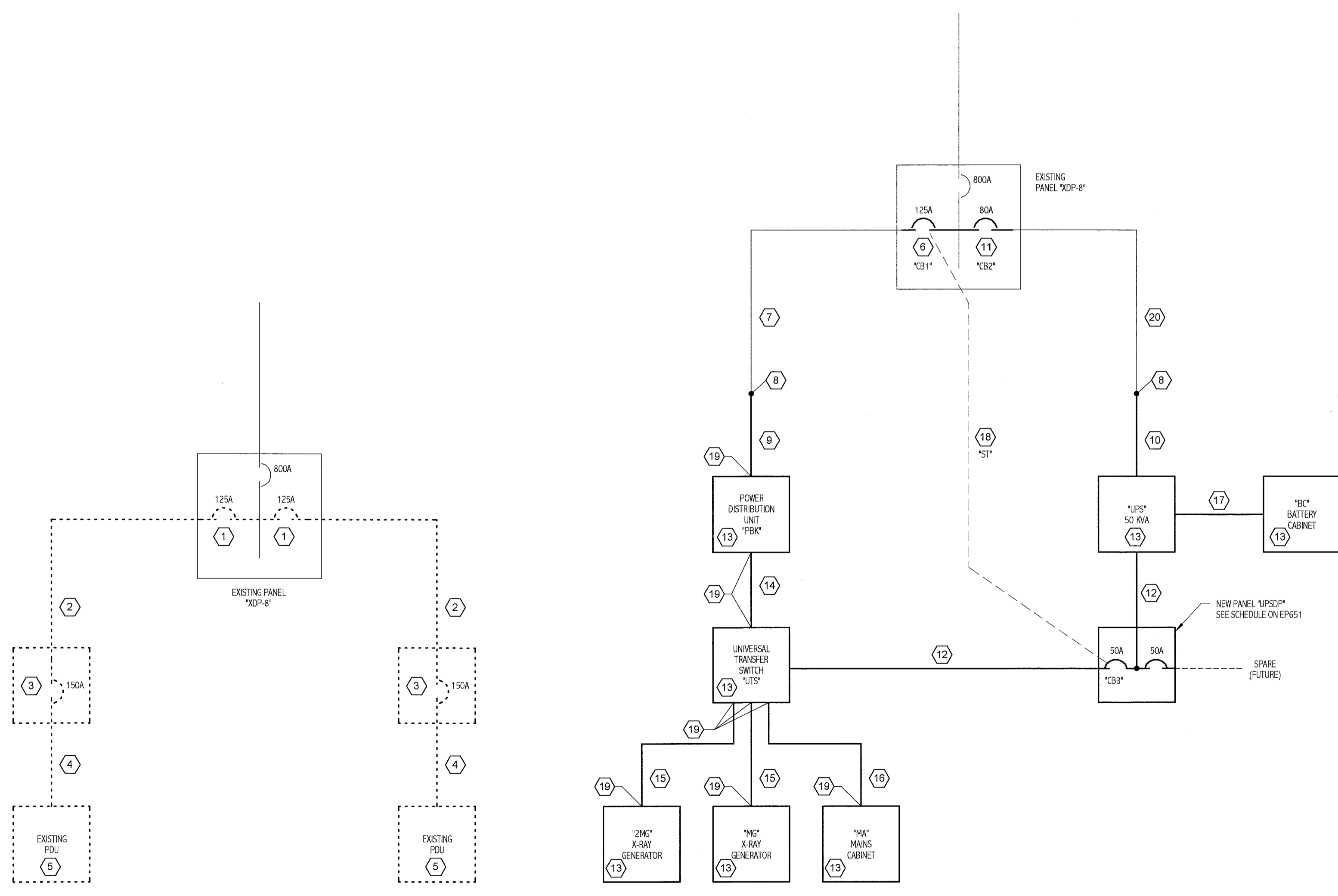
PROJECT MANAGER: NAME  
DATE: 9.3.10

REV	DESCRIPTION	DATE
0	ISSUED FOR CONSTRUCTION	9.3.10

GRAPHIC SCALE:  
0" 1"  
SCALE: 1/2" = 1'-0"  
PROJECT MANAGER: KD  
DRAWN BY: CDS  
DATE OF RECORD: 09/03/10  
PROJECT NO: 10006-00  
DATE: 9.3.10

SHEET TITLE:  
PARTIAL ONE-LINE  
DIAGRAMS

SHEET No.  
EP651



DEMOLITION PARTIAL ONE-LINE DIAGRAM

NEW WORK PARTIAL ONE-LINE DIAGRAM