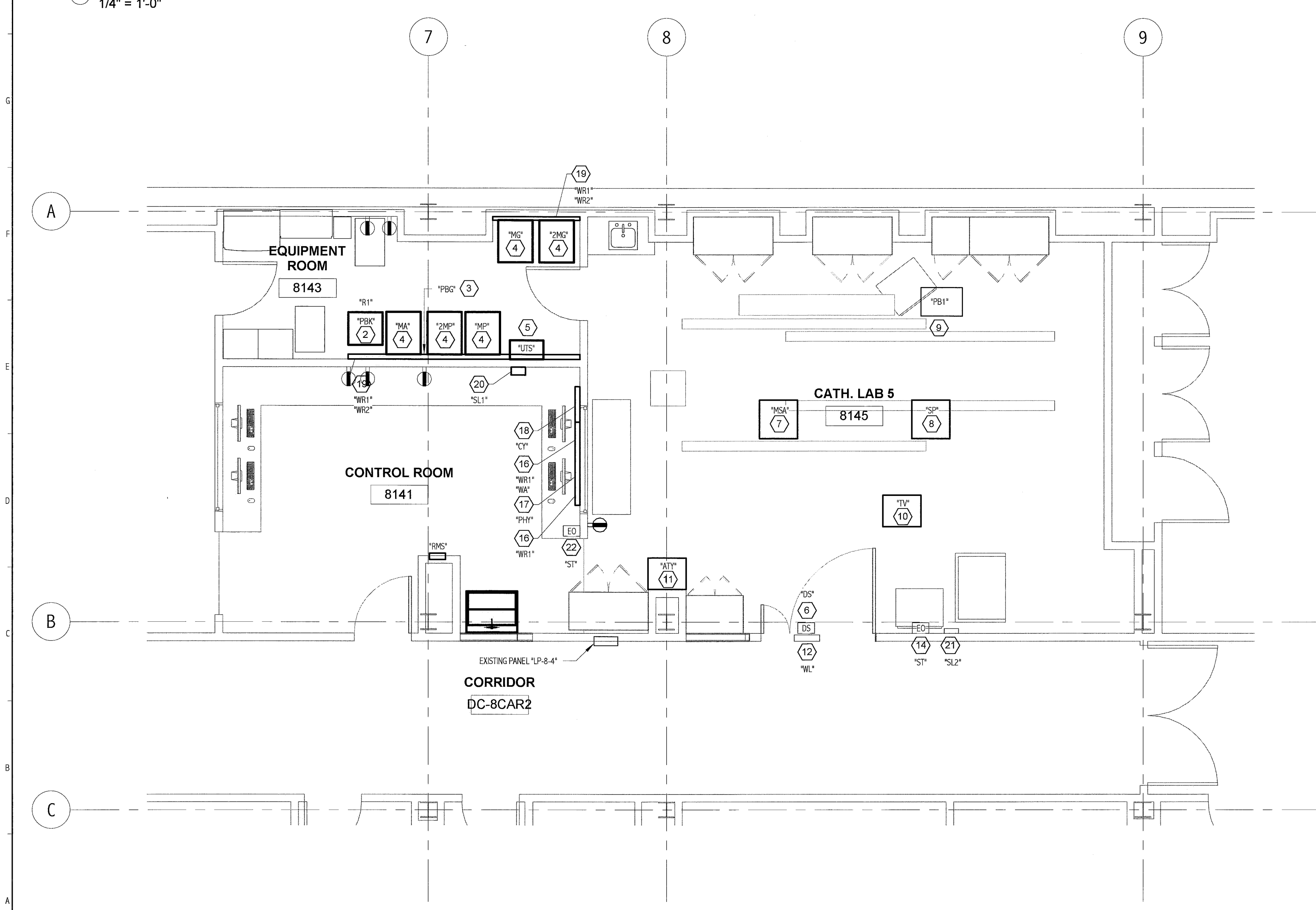


2 ACU HOLDING RACEWAY PLAN
1/4" = 1'-0"



1 CATH LAB 5 RACEWAY PLAN
1/4" = 1'-0"

GENERAL CONDUIT NOTES:

1. "PBK" TO PDU CABINET: 1@1 1/2" AND 2@2", COORDINATE CABLE REQUIREMENTS WITH PHILIPS.
2. "CB" TO "ST", "ST" TO "ST" AND "CB3" TO "ST"; 2#14, 3/4"C.
3. "PBK" TO BUILDING STEEL: 2#1, 3/4"C, PROVIDE WITH BONDING BUSHINGS AT EACH END OF CONDUIT.
4. "PBK" TO ROOM OUTLETS: 1#12, 3/4"C. ALL OUTLETS TO BE BONDED TO "PBK".
5. "MA" TO "ML": 2#12 & #12 GND, 3/4"C.
6. "ATY" TO "DS": 2#14, 3/4"C.
7. "SP" TO "MA": 1@2 1/2", 1@1 1/2" AND 1@1"C.
8. "SP" TO "MP": 3@2 1/2", 2@2" AND 1@1"C.
9. "SP" TO "MA": 1@2 1/2"C.
10. "MSA" TO "MP": 1@2 1/2" AND 1@1"C.
11. "MSA" TO "MA": 1@2 1/2" AND 1@3/4"C.
12. "PHM" TO "MSA": 1@2 1/2"C.
13. "TV" TO "MA": 1@2 1/2" AND 1@2"C.
14. "TV" TO "MP": 1@1 1/2"C.
15. "ATY" TO "MA": 1@2 1/2"C.
16. "ATY" TO "TV": 1@3/4"C.
17. "CY" TO "MP": 1@2"C.
18. "CY" TO "MA": 1@2 1/2" AND 1@2"C.
19. "CY" TO "MP": 1@3/4"C.
20. "MA" TO "MP": 1@1"C.
21. "PB1" TO "2MP": 1@2 1/2", 1@1 1/2" AND 1@1"C.
22. "PB1" TO "2MP": 2@2"C.
23. "PB1" TO "MP": 3@2 1/2" AND 1@1"C.
24. "PB1" TO "MA": 1@2"C.
25. "TV" TO CONTROL ROOM: 4@1 1/2"C.
26. "MSA" TO CONTROL ROOM: 2@1 1/2"C.
27. "RMS" TO "UPS": 1@1 1/2"C.
28. "MG" TO "PBK": 1@2"C.
29. "2MG" TO "PBK": 1@2"C.
30. "MG" TO "PBK": 1@3/4"C.
31. "2MG" TO "PBK": 1@3/4"C.
32. "MG" TO "MA": 1@2 1/2"C.
33. "2MG" TO "MA": 1@2 1/2"C.
34. "MG" TO "MP": 1@2"C.
35. "2MG" TO "2MP": 1@2"C.
36. "SL1" TO "MA": 1@2 1/2" AND 1@2"C.
37. "SL2" TO "MA": 1@2 1/2" AND 1@2"C.

NOTES:

1. SEE E-001 FOR LEGEND AND GENERAL NOTES.
2. ALL RACEWAYS AND EQUIPMENT SHALL MEET THE REQUIREMENTS OF PHILIPS INCLUDING BUT NOT LIMITED TO CONDUITS, DUCTS, TROUGHES, BOXES, DIVIDERS, COVERS, BENDS, OPENINGS, GROMMETS, CROSS OVERS, PULL ROPES AND SIMILAR.
3. SEE DRAWING EP651 FOR ADDITIONAL RACEWAY AND CABLE REQUIREMENTS.

KEYED NOTES:

- 1 TO BE FURNISHED BY PHILIPS AND INSTALLED BY CONTRACTOR.
- 2 PROVIDE BOX 18"x18"x6" AND DUCT 10"x4" BEHIND PDK (R1).
- 3 PROVIDE CENTRAL GROUND BUS BAR "PBK". FOLLOW PHILIPS REQUIREMENTS.
- 4 PROVIDE BOX 19 1/4"x6 7/8"x4" BEHIND EACH OF MA, MG, 2MG, MP AND 2MP.
- 5 UNIVERSAL TRANSFER SWITCH.
- 6 EXISTING DOOR SWITCH TO REMAIN. SEE CONNECTION DETAIL ON DRAWING EL101.
- 7 PROVIDE 10"x10"x6" FLOORBOX "MSA" BENEATH FLOOR. CORE DRILL 5" HOLE THRU FLOOR.
- 8 PROVIDE 12"x12"x4" FLOOR BOX "SP" BENEATH FLOOR. CORE DRILL 8" HOLE THRU FLOOR.
- 9 PROVIDE 18"x18"x6" CEILING BOX "PB1", FLUSH MOUNTED WITH 3" KNOCK-OUT.
- 10 PROVIDE 18"x18"x6" CEILING BOX "TV", FLUSH MOUNTED WITH 2 1/2" KNOCK-OUT.
- 11 PROVIDE 6"x6"x4" BOX "ATY", 70" AFF. VERIFY FINAL LOCATION.
- 12 EXISTING WARNING LIGHT "ML" ABOVE DOOR TO REMAIN.
- 13 NOT USED.
- 14 CONNECT EXISTING E.O. BUTTON TO NEW SHUNT TRIP BREAKERS IN PANELS "XDP-8" AND "UPS DP" WITH 2#14, 1/2"C. PROVIDE CONTROL POWER FOR SHUNT TRIP AS REQUIRED.
- 15 EXISTING HORIZONTAL DUCT "WR1" UNDER DESK. CUT AS REQUIRED TO ACCOMMODATE CY CONNECTION BOX. PROVIDE NEW STAINLESS STEEL COVERS WITH GROMMET OPENING(S) "WMS" AS REQUIRED BY PHILIPS.
- 16 STUB UP PHYSIOLOGICAL MONITORING CABLES/CONDUIT "PHM" HERE.
- 17 CONNECTION BOX "CY" BY PHILIPS.
- 18 PROVIDE TWO 10"x4" HORIZONTAL DUCTS, ONE AT FLOOR LEVEL "WR1" AND ONE AT 75" AFF TO BOTTOM "WR2"
- 19 PROVIDE 8"x8"x4" PULLBOX, 8" AFF, "SL1".
- 20 EXISTING PULLBOX, "SL2".
- 21 INSTALL EXISTING E.O. BUTTON, CONNECT TO NEW SHUNT TRIP BREAKERS IN PANELS "XDP-8" AND "UPS DP" WITH 2#14, 1/2"C. PROVIDE CONTROL POWER FOR SHUNT TRIP AS REQUIRED.

144 Free Street P.O. Box 618
Portland, Maine 04104
Tel: (207) 776-2846
Fax: (207) 776-1070
www.smartinc.com

ARCHITECTURE
ENGINEERING
PLANNING
INTERIOR DESIGN
COMMISSIONING

SMART

STATE OF MAINE
WILLIAM R. HELL
No. 7850
LICENSED PROFESSIONAL ENGINEER
9/3/10

Maine Medical Center Cath Lab 5
PORTLAND, MAINE
ISSUED FOR CONSTRUCTION
9.3.10
CURRENT ISSUE STATUS:

REV	DATE	DESCRIPTION
0	9-3-10	ISSUED FOR CONSTRUCTION

GRAPHIC SCALE:
0' 1'

SCALE: 1/4" = 1'-0"

PROJECT MANAGER: KD
DRAWN BY: CDS
DATE OF RECORD: WRH
PROJECT NO.: 10006-00
DATE: 9-3-10
SHEET TITLE:
**RACEWAY
PARTIAL PLANS**

SHEET No. EP101