



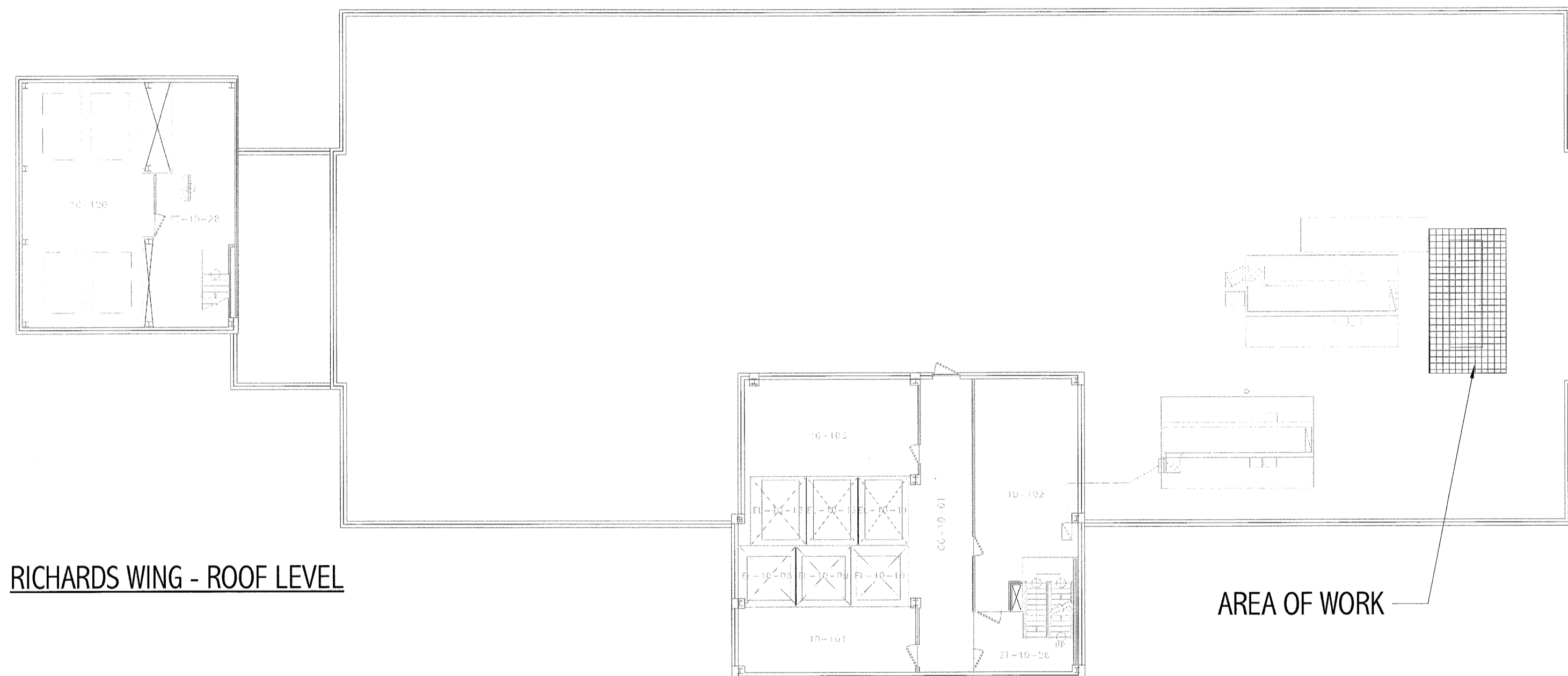
# MAINE MEDICAL CENTER

RICHARDS WING: PORTLAND, MAINE

## CATH. LAB 5 RENOVATIONS

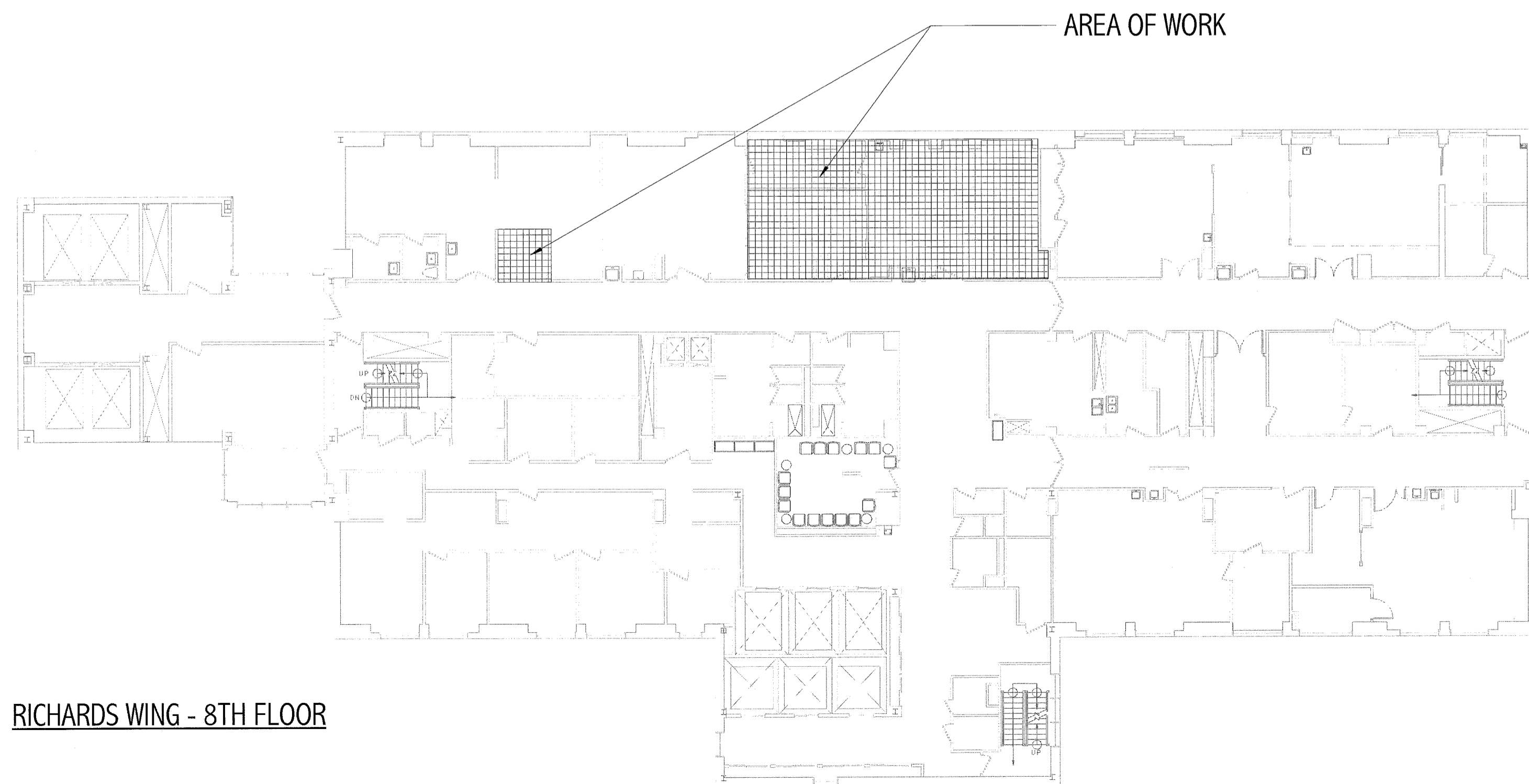
### ISSUED FOR CONSTRUCTION

### 9.3.10



RICHARDS WING - ROOF LEVEL

AREA OF WORK



RICHARDS WING - 8TH FLOOR

AREA OF WORK

#### GENERAL NOTES:

- FIELD VERIFY ALL DIMENSIONS AND LAYOUT PRIOR TO PROCEEDING WITH WORK. NOTIFY ARCHITECT IN WRITING OF ANY DISCREPANCIES OR INCONSISTENCIES. FAILURE TO REPORT ANY DISCREPANCIES WITHIN THESE CONSTRUCTION DOCUMENTS TO THE ARCHITECT WILL NOT BE GROUNDS FOR ADDITIONAL COST OR CHANGE ORDERS.
- THE CONTRACTOR SHALL BE RESPONSIBLE FOR PROVIDING ALL MATERIALS (UNLESS NOTED OTHERWISE), AND WORKMANSHIP IN ACCORDANCE WITH FEDERAL, STATE, CITY, AND LOCAL BUILDING CODES AND THEIR REQUIREMENTS.
- CONTRACTOR TO CONFIRM EXISTING WALL RATINGS.
- THE CONTRACTOR AND ALL TRADES SHALL NOTE REQUIREMENTS OF "GENERAL NOTES" ON ALL SHEETS.
- EACH TRADE TO PROVIDE SMOKE OR FIRE SEALANT AT PENETRATIONS AS REQUIRED FOR WALL TYPE. ALL SEALANT, FIRE STOPPING, AND SMOKE STOPPING ASSEMBLIES SHALL BE U.L. RATED.
- DIMENSIONS ARE FACE OF CONCRETE, FACE OF MASONRY, FACE OF EXISTING PARTITION AND CENTERLINE OF STUD PARTITIONS, UNLESS INDICATED OTHERWISE.
- REFER TO ALL CONSTRUCTION DOCUMENTS FOR REQUIREMENTS WHICH MAY AFFECT THE WORK IN ANOTHER DISCIPLINE AND COORDINATE WORK.
- REFER TO DETAILS FOR ADDITIONAL DIMENSIONAL INFORMATION.
- DOOR JAMBES SHALL BE LOCATED 6" FROM CORNER IN STUD PARTITIONS AND 8" FROM CORNER IN MASONRY PARTITIONS UNLESS INDICATED OTHERWISE.
- PROVIDE BLOCKING IN WALLS AS NECESSARY WHERE CASEWORK, SHELVES, HANDRAILS, AND MISC. EQUIPMENT ARE LOCATED.
- PATCH ALL HOLES, WALLS AND CRACKS IN ROOMS TO RECEIVE NEW PAINT.
- ANY EXISTING WALLS THAT ARE FOUND TO BE UNBRACED OR DO NOT EXTEND TO BOTTOM OF DECK/SLAB SHOULD BE BRACED BACK TO STRUCTURE. WHEN PRIVACY IS AN ISSUE EXTEND WALL TO BOTTOM OF DECK/SLAB.
- DO NOT SCALE DRAWINGS.
- "PROVIDE" MEANS "FURNISH AND INSTALL."

#### ABBREVIATIONS:

AB	ANCHOR BOLT	L	ANGLE / LENGTH
A/C	AIR CONDITIONING	LF	LEFT
ACCU	AIR CONDITIONING CONDENSER UNIT	LND	SHEET LINDOLEUM
ACPLAS	ACoustical PLASTER	LL	LIVE LOAD
ACT	ACoustIC CEILING TILE	LLH	LONG LEG HORIZONTAL
AFF	ABOVE FINISH FLOOR	LLV	LONG LEG VERTICAL
AGG	AGGREGATE	LP	LIGHTING PANEL / LIQUID PROPANE
ALT	ALTERNATE		
AP	ACCESS PANEL	MAX	MAXIMUM
APPROX	APPROXIMATE	MB	MARKER BOARD
ARCH	ARCHITECTURAL	MDO	MEDIUM DENSITY OVERLAY
		MECH	MECHANICAL
BCK	BOTTOM CORNER EXTENSION	MFR	MANUFACTURER
BD	BOARD	MIN	MINIMUM
BIT	BITUMINOUS	MISC	MISCELLANEOUS
BLDG	BUILDING	MO	MASONRY OPENING
BLP	BOTTOM LIGHT PANEL	MR	MOISTURE-RESISTANT
BO	BOTTOM OF	MUA	MAKE-UP AIR
BOF	BOTTOM OF FOOTING		
BOS	BOTTOM OF STEEL	N	NOSING
BOT	BOTTOM	N/CB	NEW CATCH BASIN
BRDG	BRIDGING	NDMH	NEW DRAIN MANHOLE
BRG	BEARING	NFM	NEW FORCE MAIN
BS	BOTH SIDES	NIC	NOT IN CONTRACT
BSE	BRICK SHELF ELEVATION	NS	NEAR SIDE
		NSD	NEW STORM DRAIN LINE
C	CHANNEL	NSS	NEW SANITARY SEWER LINE
CB	CATCH BASIN / CHALKBOARD	NTS	NOT TO SCALE
CB	CEMENTITIOUS BACKER BOARD	NW	NEW WATER LINE
CEM	CUBIC FEET PER MINUTE		
CIP	CAST IN PLACE	OC	ON CENTER
CI	CONTROL JOINT / CONSTRUCTION JOINT	OF	OUTSIDE FACE
CL	CENTER LINE	OH	OVERHEAD
CLL	CONTRACT LIMIT LINE		
CLR	CLEAR	PA	PUBLIC ADDRESS
CMU	CONCRETE MASONRY UNIT	PAF	POWER-ACTUATED FASTENER
COL	COLUMN	PDU	POOL DEHUMIDIFICATION UNIT
CONC	CONCRETE	PL	PLATE / PROPERTY LINE
CONT	CONTINUOUS	PLAM	PLASTIC LAMINATE
CT	CERAMIC TILE	PLF	POUNDS PER LINEAR FOOT
CUH	CABINET UNIT HEATER	PP	POWER PANEL
		PSF	POUNDS PER SQUARE FOOT
D	DIAMETER	PSI	POUNDS PER SQUARE INCH
DBL	DOUBLE	PT	PRESSURE-TREATED
DF	DRINKING FOUNTAIN	PVC	POLYVINYL CHLORIDE
DL	DEAD LOAD	PVMT	PAVEMENT
DR	DISPLAY FAIL		
DTL	DETAIL	R	RISER / RADIUS
DW	DISHWASHER	RB	RESILIENT BASE
DWG	DRAWING	RD	ROOF DRAIN
		REIN	REINFORCED
EA	EACH	REQ'D	REQUIRED
EJ	EXHAUST FAN / EACH FACE	RT	RIGHT
EJ	EXPANSION JOINT	ROU	ROUGH OPENING
EL	ELEVATION	ROW	RIGHT OF WAY
ELEC	ELECTRICAL	RR	RUB-BAIL
EOP	EDGE OF PAVEMENT	RTU	ROOF TOP UNIT (HVAC)
EPDM	ETHYLENE PROPYLENE DIENE MONOMER		
EQ	EQUAL	SACT	SUSPENDED ACOUSTIC TILE CEILING
EW	EACH WAY	SC	SOLID CORE
EW	ELECTRIC WATER COOLER	SF	SQUARE FOOT / SUPPLY FAN
EXST	EXISTING	SFM	SPRAYED FIRE-RESISTIVE MATERIAL
EXP	EXPANSION	SHT	SHEET
EXT	EXTERIOR	SIM	SIMILAR
		SK	SHEAR KEY
FB	FLAT BAR	SN	SANITARY NAPKIN (DISPENSER)
FBO	FURNISHED BY OTHERS	SP	SPECIAL
FCD	FLOOR CLEAR-OUT	SS	STAINLESS STEEL
FD	FLOOR DRAIN	STA	STATION
FE	FIRE EXTINGUISHER	STL	STEEL
FEC	FIRE EXTINGUISHER CABINET	STRUC	STRUCTURAL
FF	FINISH FLOOR / FAR FACE		
FEE	FINISH FLOOR ELEVATION	T	TREAD
FO	FRAMED OPENING	TB	TACKBOARD
FRP	FIBER REINFORCED PLASTIC	T&B	TOP AND BOTTOM
FS	FAR SIDE	T&M	TEMPORARY BENCHMARK
FTG	FOOTING	TCE	TOP CHORD EXTENSION
		TI	TIE JOIST
GA	GAUGE	TO	TOP OF
GALV	GALVANIZED	TOC	TOP OF CONCRETE
GB	GRAB BAR	TOF	TOP OF FOOTING
GC	GENERAL CONTRACTOR	TOM	TOP OF MASONRY
GDT	GYP-SUM DROP-IN TILE	TOP	TOP OF PIER
GV	GRAVITY VENT	TOS	TOP OF STEEL
GWS	GYP-SUM WALL BOARD	TOW	TOP OF WALL
		TP	TOILET PAPER (DISPENSER) / TEST PIT
H	HORIZONTAL	TS	TUBE STEEL
HC	HANDICAPPED / HOLLOW CORE	TYP	TYPICAL
HM	HORIZONTAL		
HU	HOLLOW METAL	UH	UNIT HEATER
HU	HEAT RECOVERY UNIT	UNO	UNLESS NOTED OTHERWISE
H&V	HEATING AND VENTILATING	V	VENT PIPE / VERTICAL
HVAC	HEATING, VENTILATING AND AIR CONDITIONING	VB	VAPOR BARRIER
		VCT	VINYL COMPOSITION TILE
I	INCLUDED ANGLE	VERT	VERTICAL
ID	INSIDE DIAMETER	VP	VISION PANEL
IF	INSIDE FACE	VTR	VENT THROUGH THE ROOF
I	ISOLATION JOINT		
IMP	IMPACT RESISTANT	W	WITH
INS	INSULATED	WC	WATER CLOSET
INV	INVERT	WF	WIDE FLANGE
		WH	WATER HEATER
IS	JOINT SUBSTITUTE	W/O	WITH OUT
		WP	WORKING POINT
K	KIPS	WS	WEB STIFFENER
		WWF	WELDED WIRE FABRIC

#### GENERAL DEMOLITION NOTES:

- COORDINATE EXTENT OF DEMOLITION WITH LOCATIONS OF PARTITIONS DESCRIBED ON PLANS AND WITH LOCATIONS OF FINISHES NOTED AS EXISTING TO REMAIN.
- ANY WALL, PARTITION, OR SURFACE DISTURBED BECAUSE OF NEW WORK OR DEMOLITION SHALL BE PATCHED AND FINISHED CONTINUOUSLY TO THE NEAREST CORNER UNLESS NOTED OTHERWISE. MATCH EXISTING ADJACENT CONSTRUCTION FINISHES, CONTINUITY, AND FIRE RATINGS UNLESS NOTED OTHERWISE.
- PROTECT ALL FINISHES, MATERIALS AND EQUIPMENT NOTED AS EXISTING TO REMAIN. CONTRACTOR SHALL BE RESPONSIBLE TO REPLACE ALL FINISHES, MATERIALS, AND EQUIPMENT DAMAGED DURING CONSTRUCTION.
- DIMENSIONS INDICATED +/- ARE EXISTING CONDITION DIMENSIONS TO BE VERIFIED IN FIELD.
- CLEARLY IDENTIFY AND TAG MECHANICAL, PLUMBING, AND ELECTRICAL FIXTURES OR EQUIPMENT THAT ARE STILL IN USE PRIOR TO DEMOLITION TO AVOID ACCIDENTAL REMOVAL.
- WALL INDICATED WITH A DASHED LINE ARE TO BE REMOVED COMPLETE. IF WALL IS BEARING PRIOR TO REMOVAL, IF SO, CONTACT ARCHITECT/ENGINEER IMMEDIATELY.
- SEE M.E.P. DRAWINGS FOR THE SCOPE OF DEMOLITION IN THOSE DISCIPLINES.

#### GENERAL PLAN NOTES:

- FURNITURE/EQUIPMENT DASHED IN BY OTHERS IS INDICATED FOR COORDINATION. PROVIDE BLOCKING FOR ALL MOUNTED CASEWORK, FURNITURE, EQUIPMENT AND ANY OTHER NIC ITEMS.
- REFER TO FINISH SCHEDULES FOR WALL PROTECTION LOCATIONS.
- EXISTING INTERIOR PARTITIONS TO REMAIN EXCEPT WHERE WORK REQUIRES CUTTING, PATCHING AND FINISHING OF WALL TO ACCOMMODATE UTILITY LOCATION.

#### DRAWING LIST:

- G-001 COVER SHEET, LEGEND, ABBREVIATIONS & NOTES
- A-101 DEMO & FLOOR PLAN
- A-102 REFLECTED CEILING AND FINISH PLAN
- S-100 PARTIAL FLOOR FRAMING PLAN AND DETAILS
- S-101 MECHANICAL PLATFORM FRAMING
- M-001 LEGEND AND ABBREVIATIONS
- M-101 HVAC DEMOLITION AND NEW DUCTWORK PLAN
- M-102 HVAC DEMOLITION AND NEW PIPING PLAN
- M-103 MECHANICAL NEW AND DEMO ROOF PLAN
- M-501 DETAILS
- M-502 DETAILS
- M-601 SCHEDULES
- M-651 SPECIFICATIONS, NOTES AND SEQUENCE OF OPERATIONS
- E-001 LEGEND AND GENERAL NOTES
- E-002 SPECIFICATIONS SHEET 1
- E-003 SPECIFICATIONS SHEET 2
- ED101 ELECTRICAL DEMOLITION NOTES
- EP101 RACEWAY PARTIAL PLANS
- EP102 POWER PARTIAL PLANS
- EP651 PARTIAL ONE LINE DIAGRAMS
- EL101 LIGHTING PARTIAL PLANS
- EY101 SYSTEMS PARTIAL PLANS
- Q-001 VENDOR EQUIPMENT DRAWINGS, SHEET 1
- Q-002 VENDOR EQUIPMENT DRAWINGS, SHEET 2
- Q-003 VENDOR EQUIPMENT DRAWINGS, SHEET 3
- Q-004 VENDOR EQUIPMENT DRAWINGS, SHEET 4
- Q-005 VENDOR EQUIPMENT DRAWINGS, SHEET 5
- Q-006 VENDOR EQUIPMENT DRAWINGS, SHEET 6
- Q-007 VENDOR EQUIPMENT DRAWINGS, SHEET 7
- Q-008 VENDOR EQUIPMENT DRAWINGS, SHEET 8
- Q-009 VENDOR EQUIPMENT DRAWINGS, SHEET 9
- Q-010 VENDOR EQUIPMENT DRAWINGS, SHEET 10

#### APPLICABLE CODES:

- GENERAL:**
- INTERNATIONAL BUILDING CODE (IBC); 2009 EDITION
  - NATIONAL FIRE PROTECTION ASSOCIATION (NFPA101); 2009 EDITION
  - ACCESSIBILITY GUIDELINES FOR BUILDINGS AND FACILITIES (ADA); 1994 EDITION
  - AIA GUIDELINES FOR DESIGN AND CONSTRUCTION OF HOSPITAL AND HEALTHCARE FACILITIES; 2006 EDITION
- PLUMBING:**
- NFPA 13: INSTALLATION OF SPRINKLER SYSTEMS; 2002
  - STATE OF MAINE INTERNAL PLUMBING CODE; 2005
- HVAC:**
- MECHANICAL CODE: INTERNATIONAL MECHANICAL CODE; 2003 EDITION
  - NFPA 99 HEALTHCARE FACILITIES; 2002 EDITION
  - ENERGY CODE: ASHRAE 90.1; 2001 EDITION WITH AMENDMENTS
  - ASHRAE 62; 2001 EDITION
  - FIRE AND SMOKE DAMPER INSTALLATION: NFPA 90A AND NFPA 10; 2003 EDITION
  - DUCT MOUNTED SMOKE DETECTORS: NFPA 72 EDITION
- ELECTRICAL:**
- NFPA 70; 2005 EDITION
  - NFPA 72; 2003 EDITION
  - IESNA LIGHTING HANDBOOK REFERENCE AND APPLICATION, 9th EDITION

144 Fox Street, Box 619  
Portland, Maine 04109  
Tel: (207) 772-3846  
Fax: (207) 772-1070  
www.smrtinc.com

ARCHITECTURE  
ENGINEERING  
PLANNING  
INTERIOR DESIGN  
COMMISSIONING

**SMRT**

LICENSED ARCHITECT  
KRISTEN L. DAMUTH  
No. 2788  
STATE OF MAINE  
3 Sept 10

PROJECT NORTH

MAINE MEDICAL CENTER CATH. LAB #5  
PORTLAND, ME

ISSUED FOR CONSTRUCTION  
9.3.10

CURRENT CODE STATUS:

NO.	DESCRIPTION	DATE
1	ISSUED FOR CONSTRUCTION	9.3.10

GRAPHIC SCALE:  
0" 1"

SCALE: As Indicated

PROJECT MANAGER: KD  
DRAWN BY: ART  
DATE OF RECORD: KD  
PROJECT NO.: 10006-00  
DATE: 9.3.10

SHEET TITLE:  
COVER SHEET,  
LEGEND,  
ABBREVIATIONS &  
NOTES

SHEET No. G-001