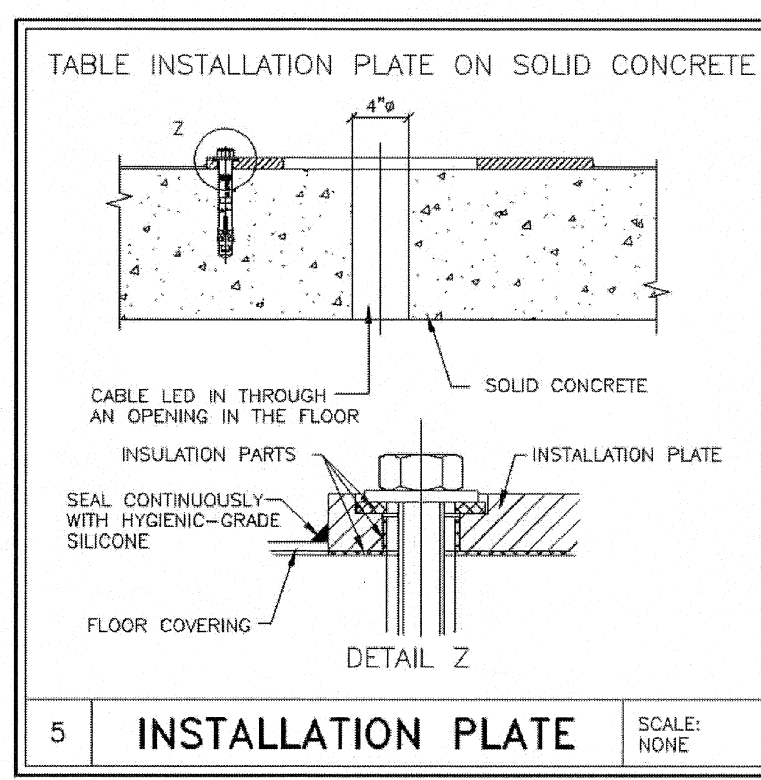
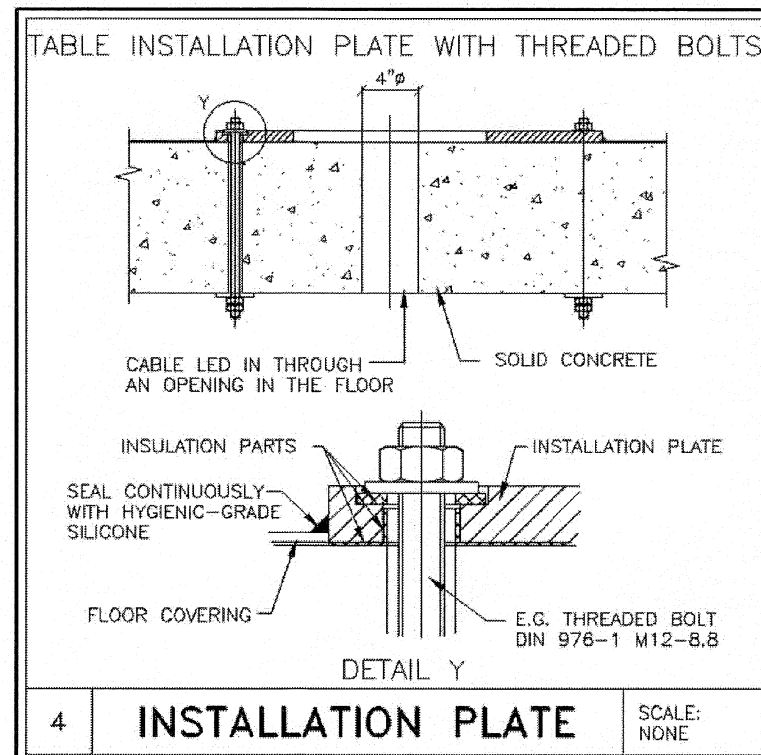
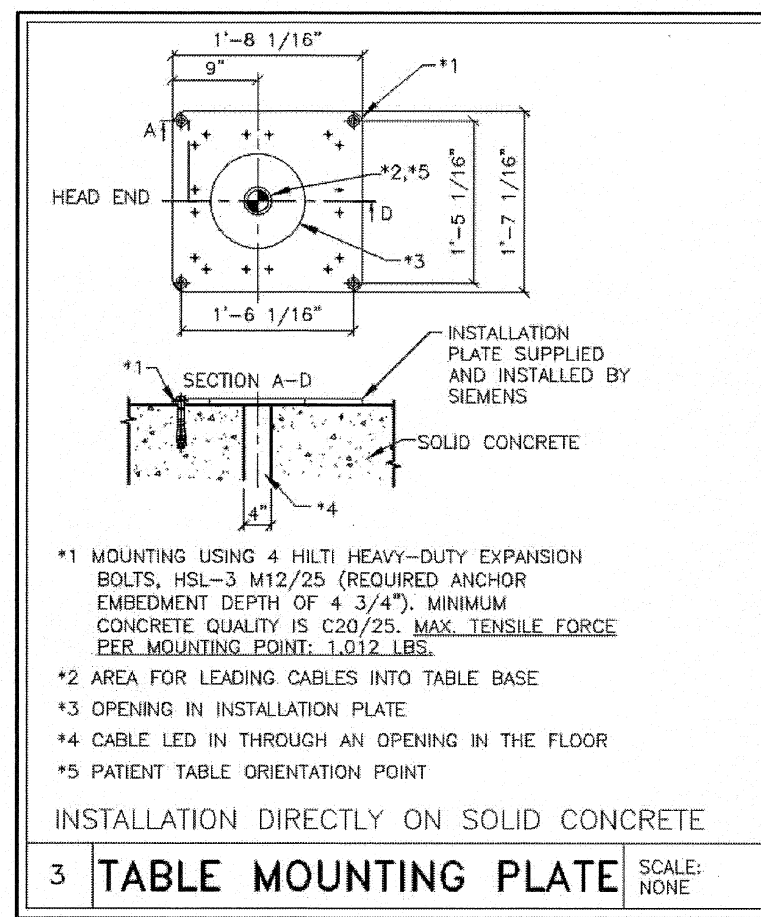
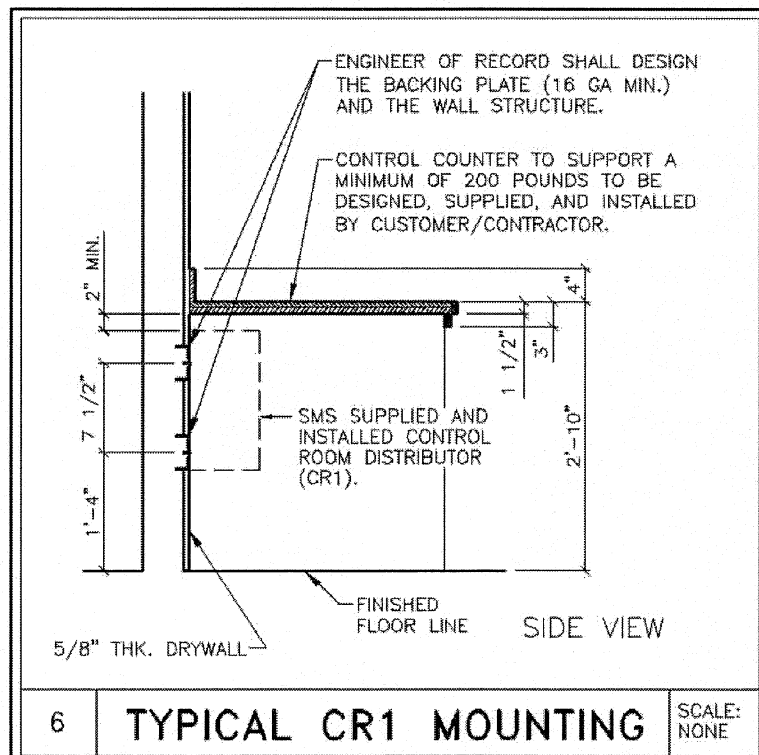
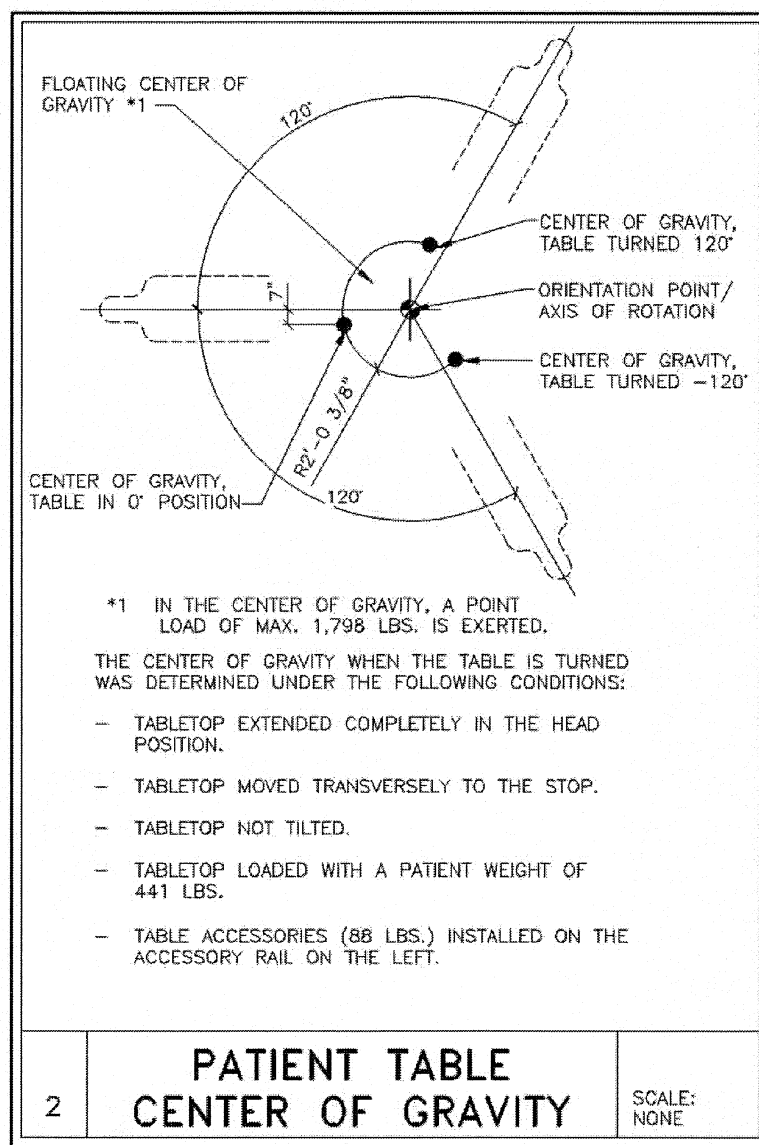
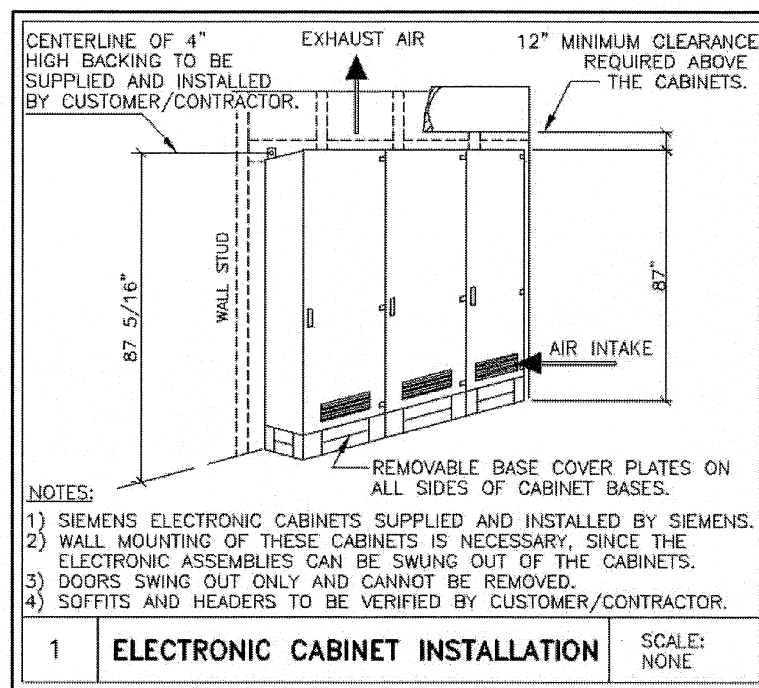


STRUCTURAL FLOOR PLAN

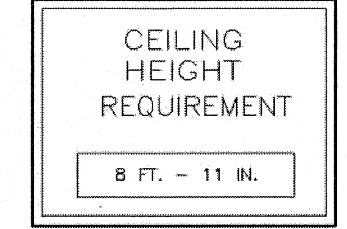


STRUCTURAL NOTES

- 1) THE CUSTOMER/CONTRACTOR SHALL FURNISH AND INSTALL ALL STRUCTURAL SUPPORT MEMBERS AND NEEDED HARDWARE FOR THE INSTALLATION OF THE SIEMENS EQUIPMENT.
- 2) THE OVERHEAD STRUCTURAL SUPPORT SYSTEM SHALL BE FIXED, RIGID AND BRACED FOR SWAY.
- 3) ALL STRUCTURAL SUPPORT MEMBERS SHALL BE TRUE, SQUARE, LEVEL, PARALLEL AND COPLANAR WITH RESPECT TO EACH OTHER, WITH A HORIZONTAL STRUCTURAL SUPPORT MEMBER TO BE LOCATED AND SET WITH A TRANSIT.
- 4) ALL STRUCTURAL SUPPORT DETAILS SHOWN ARE SAMPLE DETAILS BASED UPON TYPICAL AND STANDARD BUILDING PRACTICES AND ARE NOT INTENDED AS ACTUAL CONSTRUCTION DETAILS. ALL CONSTRUCTION DETAILS AND SUPPORT CALCULATIONS SHALL BE PREPARED BY A PROFESSIONAL STRUCTURAL ENGINEER AT THE CUSTOMER'S EXPENSE. IN THE EVENT AN EXISTING SUPPORT SYSTEM IS TO BE USED, IT WILL BE THE CUSTOMER'S RESPONSIBILITY TO VERIFY THE INTEGRITY OF THAT SYSTEM.
- 5) WHERE SHOWN ON THE 1/4" STRUCTURAL FLOOR PLAN, THESE ARE ON OCCASION MOUNTING FRAMES FURNISHED BY SMS. THESE FRAMES ARE TO BE SET BY THE CONTRACTOR, UNDER THE SUPERVISION OF SMS PERSONNEL. THE CUSTOMER/CONTRACTOR IS RESPONSIBLE FOR ALL FRAMES INSTALLED BY HIM TO BE WATER LEVEL AND ANCHORED PROPERLY.
- 6) ALL CEILING FIXTURES (i.e. AIR SUPPLY GRILLES, AIR RETURN GRILLES, EXHAUST GRILLES, SPRINKLER HEADS, INCANDESCENT AND FLUORESCENT LIGHT FIXTURES, INTERCOM SPEAKERS, MEDICAL GAS COLUMNS, ETC.) SHALL BE INSTALLED FLUSH MOUNTED WITH THE FINISHED CEILING TO PROVIDE FREE AND UNRESTRICTED TRAVEL OF THE SMS CEILING MOUNTED EQUIPMENT.
- 7) THE BOTTOM SIDE OF THE UNSTRUT CEILING GRID AND ANY CEILING MOUNTED SUPPORT PLATES ARE TO BE INSTALLED FLUSH WITH THE FINISHED CEILING. THE CUSTOMER/CONTRACTOR SHALL ALSO PROVIDE COVERSTRIPS FOR THE UNSTRUT.
- 8) THE STRUCTURAL PLANNING AS SHOWN ON THE 1/4" STRUCTURAL PLAN HAS BEEN COORDINATED WITH THE EQUIPMENT LOCATION AS SHOWN ON THE 1/4" EQUIPMENT LAYOUT PLAN. FOR THIS REASON, ANY DEVIATIONS FROM THE STRUCTURAL PLANNING AS SHOWN MUST BE APPROVED BY SMS PLANNING DEPARTMENT.
- 9) THE STRUCTURAL ENGINEER OF RECORD SHALL BE RESPONSIBLE FOR THE DESIGN AND DETAIL OF FLOOR, WALL AND CEILING STRUCTURES IN ACCORDANCE WITH THE WEIGHTS, MOMENTS AND FORCES AS SHOWN ON OUR STRUCTURAL CALCULATIONS, OR INFORMATION, IN CONSIDERATION OF FORCES AS DETERMINED PER LOCAL GOVERNING BUILDING CODES.

GENERAL PATIENT TABLE NOTES

THE PREINSTALLATION PARTS ARE PART OF THE PREINSTALLATION SHIPMENT.
 THE PREINSTALLATION KIT CONTAINS THE MOUNTING PLATE WITH INSTALLATION HARDWARE.
 THE MOUNTING PLATE FOR THE PATIENT TABLE MUST BE INSTALLED ON A SOLID BASE THAT HAS SUFFICIENT LOAD CAPACITY, CUT AWAY FROM THE FLOOR COVERING, IF NECESSARY. ANY MATERIAL IN THE LOCATION OF THE MOUNTING PLATES THAT DOES NOT HAVE THE REQUIRED LOAD CAPACITY MUST BE REPLACED WITH FILLED CONCRETE.
 HILTI HEAVY DUTY EXPANSION ANCHORS ARE INCLUDED IN THE SHIPMENT FOR INSTALLING THE MOUNTING PLATE. IF NECESSARY, THE MOUNTING PLATES CAN ALSO BE INSTALLED USING M12 THREADED STUDS, MINIMUM HARDNESS RATED 8.8 PER THE ISO 9000, WHICH ARE INSERTED THROUGH THE CEILING OF THE ROOM BELOW (THREADED STUDS, ETC. MUST BE OBTAINED LOCALLY).
PATIENT TABLE TENSION LOADS
 MOUNTING PLATE ON SOLID CONCRETE.
 FOOT-END LOAD PER INSTALLATION PLATE MOUNTING POINT, MAXIMUM TENSILE FORCE 1,012 LBS.



ATTENTION:

- THIS DRAWING IS DESIGNED TO CONFORM TO FEATURES AND EQUIPMENT REQUIREMENTS PRESENTED AT THE TIME OF THEIR PREPARATION. SINCE BOTH THESE FACTORS ARE SUBJECT TO DESIGN MODIFICATION, THEY ARE NOT TO BE USED FOR CONSTRUCTION PURPOSES.
 - THIS SET OF PLANS REPRESENTS A COMPLETE SET OF SERIALS AND SHOULD NOT BE SEPARATED.
 - IT IS RECOMMENDED THAT THE SIEMENS DRAWINGS BE INCORPORATED WITH THE CONSTRUCTION DOCUMENTS FOR REFERENCE.
 - ALL DIMENSIONS SHOWN ON THIS DRAWING ARE FROM FINISHED SURFACES.
 - THIS DRAWING DOES NOT PROVIDE RADIATION SHIELDING REQUIREMENTS FOR X-RAY AND ASSOCIATED EQUIPMENT. THE CUSTOMER IS RESPONSIBLE FOR CONSULTING WITH A REGISTERED RADIATION PHYSICIST TO SPECIFY RADIATION PROTECTION.

PROJECT MANAGER: RICH DEISTER TEL: (207) 929-3556 FAX: (207) 929-3776 EMAIL: richdeister@siemens.com		SIEMENS	
MAINE MEDICAL CENTER		22 BRAMHALL STREET, PORTLAND, ME 04102 ANGIO EXAM ROOM #3 B 429- ARTIS ZEE CEILING	
PROJECT #: 1001341		SHEET: S-101	
SHEET OF: 3 8		DRAWN BY: S. DOUGLAS	
DATE: 08/19/10		CHECKED:	
SCALE: AS NOTED		REF. #: 50141773	
THE USE OR REPRODUCTION OF THIS TITLE BLOCK WITHOUT SIEMENS AUTHORIZATION WILL RESULT IN PROSECUTION UNDER FULL EXTENT OF THE LAW. ALL RIGHTS ARE RESERVED.			
-ISSUE BLOCK-			

NOTE: THIS DRAWING WAS NOT PREPARED BY SMRT. IT IS PROVIDED FOR COORDINATION AND REFERENCE PURPOSES ONLY.

144 Free Sheet P.D. Box 618
Portland, Maine 04101
tel: (207) 772-3846
fax: (207) 772-1070
www.smrtinc.com

ARCHITECTURE
ENGINEERING
PLANNING
INTERIOR DESIGN
COMMISSIONING

SMRT

PROJECT NORTH

Bramhall Radiology
ANGIO RENOVATIONS
PORTLAND, ME

ISSUED FOR CONSTRUCTION
8.24.10

DATE	DESCRIPTION	REVISION
08.09.10 <td>RE-ISSUED FOR CONSTRUCTION <td>1</td> </td>	RE-ISSUED FOR CONSTRUCTION <td>1</td>	1

GRAPHIC SCALE:
0' 1'

SCALE:
PROJECT MANAGER: DIV
DRAWN BY: DIV
DATE: 8.24.10

SHEET TITLE:
VENDOR EQUIPMENT DRAWINGS SHEET 4

SHEET NO.:
Q-004