

DIRECTORY	KVA LOAD			CKT NO.	BKR AMPS	A	B	C	BKR AMPS	CKT NO.	KVA LOAD			DIRECTORY	
	A	B	C								A	B	C		
ANGIO #3 PANEL (MP)	32.0			1	125	●				2				SPACE	
		32.0		3		●				4					SPACE
			32.0	5		●				6					SPACE
SPACE				7		●				8					SPACE
SPACE				9		●				10					SPACE
SPACE				11		●				12					SPACE
SPACE				13		●				14					SPACE
SPACE				15		●				16					SPACE
SPACE				17		●				18					SPACE
SPACE				19		●				20					SPACE
SPACE				21		●				22					SPACE
SPACE				23		●				24					SPACE
SPACE				25		●				26					SPACE
SPACE				27		●				28					SPACE
SPACE				29		●				30					SPACE
SPACE				31		●				32					SPACE
SPACE				33		●				34					SPACE
SPACE				35		●				36					SPACE
SPACE				37		●				38					SPACE
SPACE				39		●				40					SPACE
SPACE				41		●				42					SPACE
SUB-TOTAL				32.0	32.0	32.0	NEUTRAL BUS			0.0	0.0	0.0	SUB-TOTAL		
				GROUND BUS											
VOLTAGE: 480Y/277V				3 PHASE		4 WIRE		400 AMP BUS		TOTAL KVA	A	32.0	PANEL NO.	CDPBA (CRITICAL)	
MAIN LUGS ONLY						400 AMP LUGS		TOTAL KVA	B	32.0					
MOUNTING: SURFACE								TOTAL KVA	C	32.0	LOCATION	NDF BASEMENT			
SC RATING: 35,000 AIC								TOTAL KVA	96.0						
NOTES:															

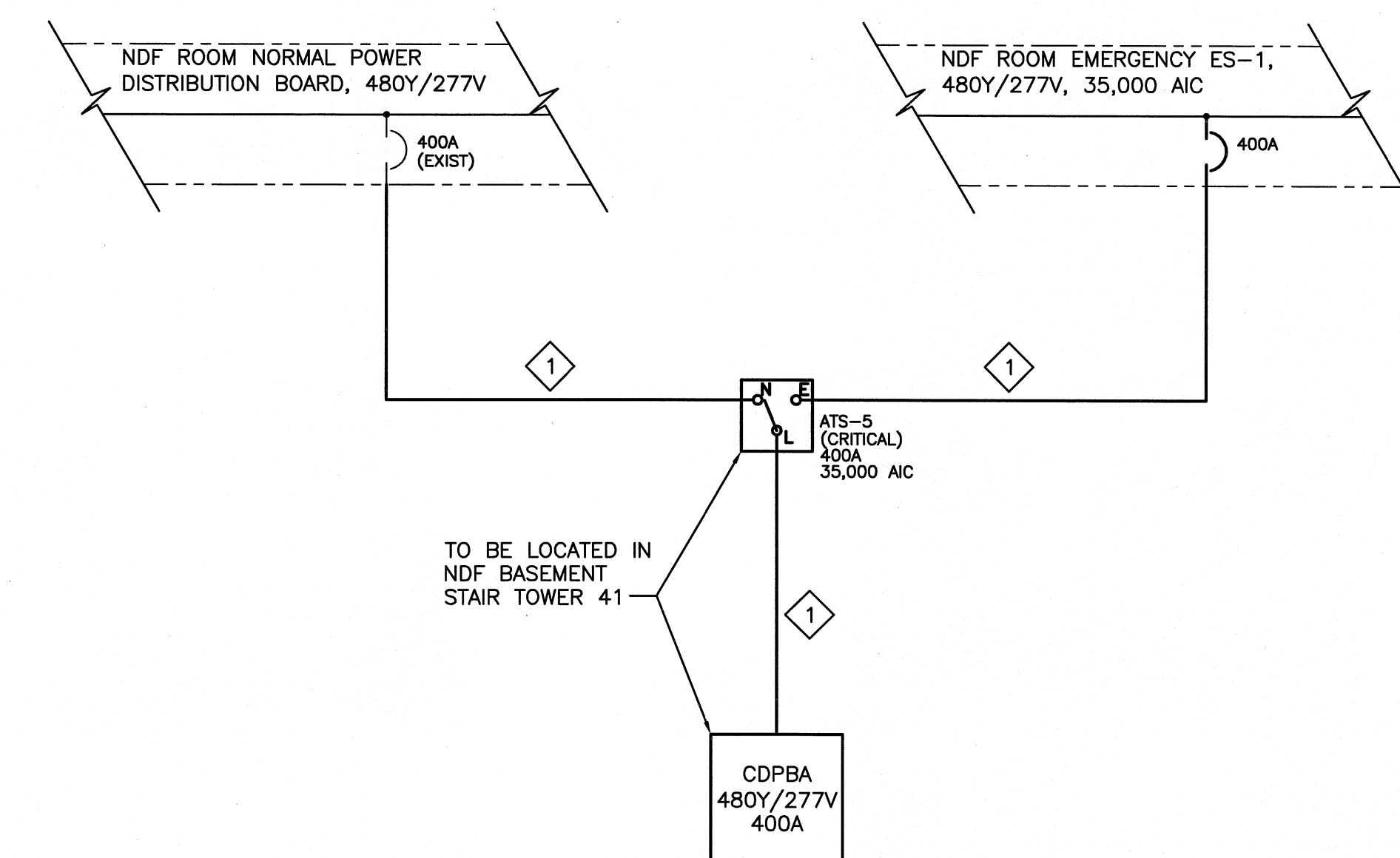
DIRECTORY	KVA LOAD			CKT NO.	BKR AMPS	A	B	C	BKR AMPS	CKT NO.	KVA LOAD			DIRECTORY	
	A	B	C								A	B	C		
POLYDOROS A100 CABINET (PU1)	27.0			1	100	●				2				SPACE	
		27.0		3		●				4					SPACE
			27.0	5		●				6					SPACE
	5.0			7	50	●				8				SPACE	
SYSTEM CABINET (SC1) VIA UPS		5.0		9		●				10					SPACE
			5.0	11		●				12					SPACE
SPACE				13		●				14					SPACE
SPACE				15		●				16					SPACE
SPACE				17	●				18					SPACE	
SUB-TOTAL				32.0	32.0	32.0	NEUTRAL BUS			0.0	0.0	0.0	SUB-TOTAL		
				GROUND BUS											
VOLTAGE: 480Y/277V				3 PHASE		4 WIRE		125 AMP BUS		TOTAL KVA	A	32.0	PANEL NO.	ANGIO #3 (MP) (CRITICAL)	
MAIN BREAKER:						125 AMP TRIP		TOTAL KVA	B	32.0					
MOUNTING: SURFACE								TOTAL KVA	C	32.0	LOCATION	CONTROL B429			
SC RATING: 18,000 AIC								TOTAL KVA	96.0						
NOTES: 1.) MAIN BREAKER SHALL BE PROVIDED WITH UNDERVOLTAGE TRIP COIL. 120V FOR TRIP COIL TO BE DERIVED INSIDE PANEL BY MEANS OF A 277V-120V TRANSFORMER. ANGIO MACHINE EPO SWITCHES SHALL BE WINED IN SERIES WITH COIL.															
2.) PANELBOARD SHALL BE PROVIDED WITH BOTH A SAFETY GROUND AND A ISOLATED GROUND BUS.															

NOTE:

- SEE SHEET E-001 FOR LEGEND AND GENERAL NOTES.

CABLE SCHEDULE:

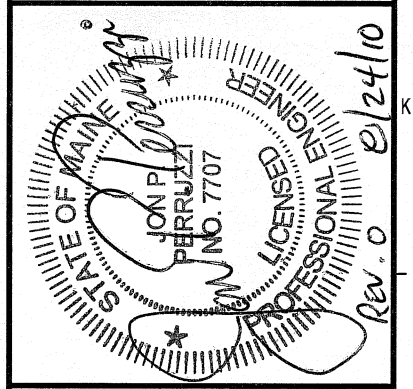
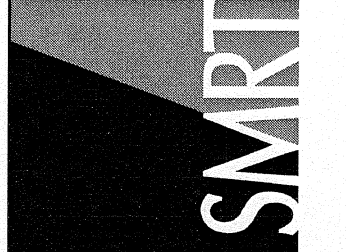
- 4#500 KCMIL & #3 GND, 3 1/2" C



ONE LINE DIAGRAM

144 Fox Street, Box 618
Portland, Maine 04101
Tel: (207) 772-3846
Fax: (207) 772-1070
www.smartinc.com

ARCHITECTURE
ENGINEERING
PLANNING
INTERIOR DESIGN
COMMISSIONING



Bramhall Radiology
ANGIO RENOVATIONS
PORTLAND, ME
ISSUED FOR CONSTRUCTION
8.24.10
CURRENT ISSUE STATUS

REV	DATE	DESCRIPTION
0	8.24.10	ISSUED FOR CONSTRUCTION

GRAPHIC SCALE:
0" 1"
SCALE: NONE
PROJECT MANAGER: DN
DRAWN BY: CS
DATE OF RECORD: JPS
PROJECT NO: 09022-01
DATE: 8.24.10

SHEET TITLE:
**ONE-LINE DIAGRAM
AND
PANEL SCHEDULES**

SHEET No.
EP601