

REV	DESCRIPTION	DATE
0	ISSUED FOR CONSTRUCTION	8.24.10

GRAPHIC SCALE:
 0" 1"
 SCALE: As indicated
 PROJECT MANAGER: DW
 ICDRAWN BY: CDS
 A/E OF RECORD: JPP
 PROJECT NO.: 09022-01
 DATE: 8.24.10
 SHEET TITLE:
ENLARGED POWER PLANS SHEET 2
 SHEET No. EP402

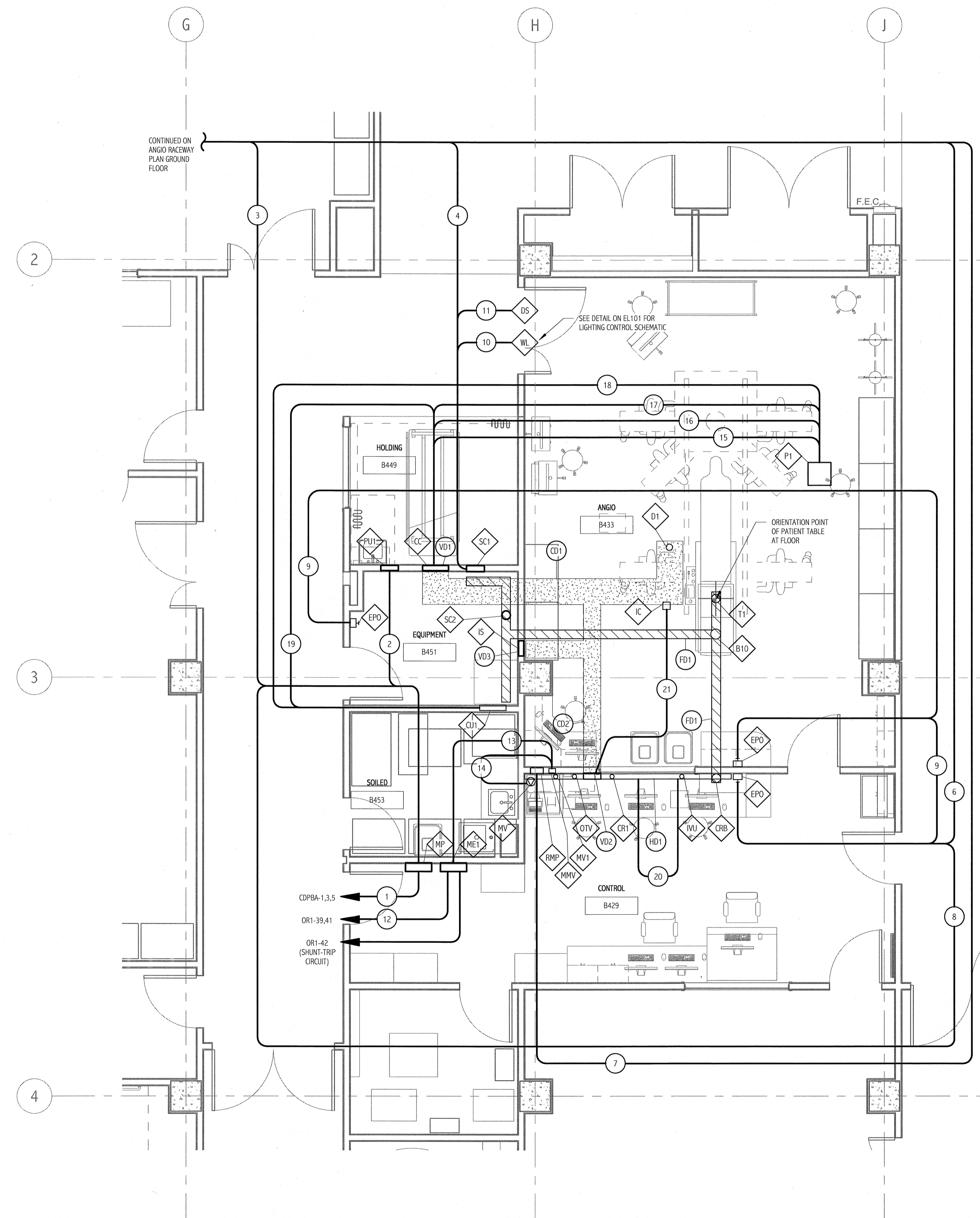
NOTES:

- SEE SHEET E-001 FOR LEGEND AND GENERAL NOTES.
- REFER TO SIEMENS INSTALLATION DRAWINGS, PROJECT # 1001341, FOR ADDITIONAL INFORMATION.
- FOR LOCATION OF PANELBOARDS COPBA AND OR1, SEE EP101.

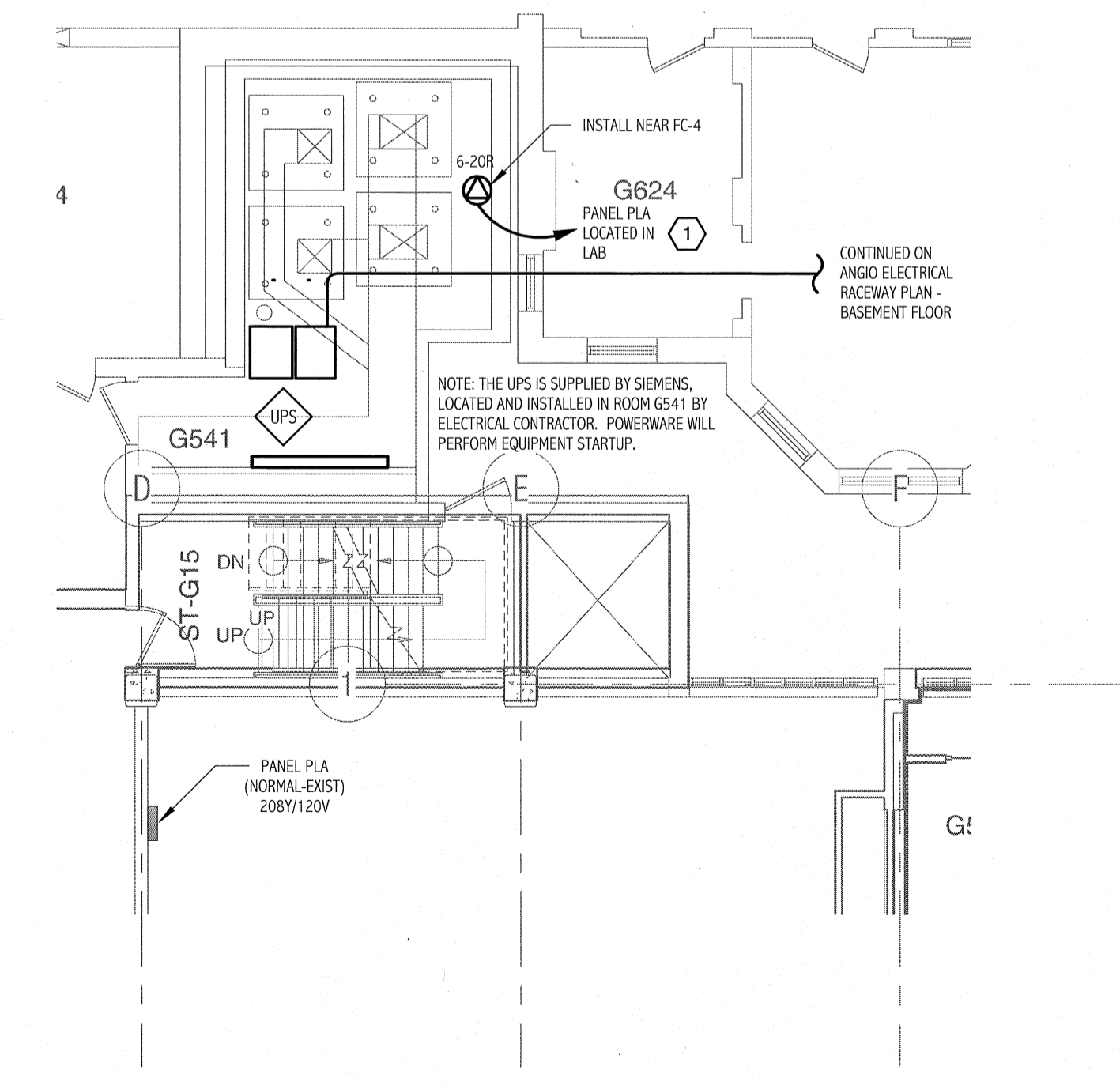
KEYED NOTE:

- ① PROVIDE A 2-POLE, 240VOLT, 15 AMP CIRCUIT BREAKER IN PANELBOARD.

CABLE AND CONDUIT REQUIREMENTS - ANGIO ROOM						
CONDUIT ITEM #	FROM ITEM #	TO ITEM #	CONDUIT QTY AND SIZE	CABLE	MAX CONDUIT LENGTH	REMARKS
①	COPBA	MP	(1) - 2"	4 #1, 1 #1 GND & 1#1 ISOLATED GND	N/A	CONDUIT & CABLE PROVIDED BY THE ELECTRICAL CONTRACTOR.
②	MP	PH1	(1) - 1 1/2"	3 #2 & #2 GND	N/A	CONDUIT & CABLE PROVIDED BY THE ELECTRICAL CONTRACTOR.
③	MP	UPS	(1) - 1"	4 #8, 1 #8 GND & 1#8 ISOLATED GND	N/A	CONDUIT & CABLE PROVIDED BY THE ELECTRICAL CONTRACTOR.
④	UPS	SC1	(1) - 1"	4 #8, 1 #8 GND & 1#8 ISOLATED GND	N/A	CONDUIT & CABLE PROVIDED BY THE ELECTRICAL CONTRACTOR.
⑤	UPS	KFMR	N/A	N/A	N/A	N/A
⑥	UPS	EPO	(1) - 3/4"	4 #12 & #12 GND	N/A	CONDUIT & CABLE PROVIDED BY THE ELECTRICAL CONTRACTOR.
⑦	RMP	UPS	(1) - 3/4"	4 #16	500'	CONDUIT & CABLE PROVIDED BY THE ELECTRICAL CONTRACTOR.
⑧	MP	EPO	(1) - 3/4"	4 #12 & #12 GND	N/A	CONDUIT & CABLE PROVIDED BY THE ELECTRICAL CONTRACTOR.
⑨	EPO	EPO	(1) - 3/4"	4 #12 & #12 GND	N/A	CONDUIT & CABLE PROVIDED BY THE ELECTRICAL CONTRACTOR.
⑩	SC1	CONTROL	(1) - 3/4"	2 #12 & #12 GND	N/A	CONDUIT & CABLE PROVIDED BY THE ELECTRICAL CONTRACTOR.
⑪	SC1	DS	(1) - 3/4"	3 #12 & #12 GND	N/A	CONDUIT & CABLE PROVIDED BY THE ELECTRICAL CONTRACTOR.
⑫	OR1	ME1	(1) - 3/4"	3 #12 & #12 GND	N/A	CONDUIT & CABLE PROVIDED BY THE ELECTRICAL CONTRACTOR.
⑬	ME1	MMV	(1) - 3/4"	3 #12 & #12 GND	N/A	CONDUIT & CABLE PROVIDED BY THE ELECTRICAL CONTRACTOR.
⑭	MMV	MY	(1) - 3/4"	3 #12 & #12 GND	N/A	CONDUIT & CABLE PROVIDED BY THE ELECTRICAL CONTRACTOR.
⑮	PI	VD1	(1) - 2"	BY SIEMENS	26'	CONDUIT PROVIDED BY THE ELECTRICAL CONTRACTOR. CABLES FURNISHED AND INSTALLED BY SIEMENS. PROVIDE PULL STRING.
⑯	PI	VD1	(2) - 3"	BY SIEMENS	26'	CONDUIT PROVIDED BY THE ELECTRICAL CONTRACTOR. CABLES FURNISHED AND INSTALLED BY SIEMENS. PROVIDE PULL STRING.
⑰	PI	VD1	(1) - 3"	BY SIEMENS	23'	CONDUIT PROVIDED BY THE ELECTRICAL CONTRACTOR. CABLES FURNISHED AND INSTALLED BY SIEMENS. PROVIDE PULL STRING.
⑱	PI	CU1	(1) - 2 1/2"	BY SIEMENS	77'	CONDUIT PROVIDED BY THE ELECTRICAL CONTRACTOR. CABLES FURNISHED AND INSTALLED BY SIEMENS. PROVIDE PULL STRING.
⑲	VD1	CU1	(1) - 2"	BY SIEMENS	86'	CONDUIT PROVIDED BY THE ELECTRICAL CONTRACTOR. CABLES FURNISHED AND INSTALLED BY SIEMENS. PROVIDE PULL STRING.
⑳	HD1	MMV WIRE	(1) - 2"	BY SIEMENS	16'	CONDUIT PROVIDED BY THE ELECTRICAL CONTRACTOR. CABLES FURNISHED AND INSTALLED BY SIEMENS. PROVIDE PULL STRING.
㉑	VD2	IC	(1) - 3/4"	BY SIEMENS	N/A	CONDUIT PROVIDED BY THE ELECTRICAL CONTRACTOR. CABLES FURNISHED AND INSTALLED BY SIEMENS. PROVIDE PULL STRING.



ANGIO ELECTRICAL RACEWAY PLAN - BASEMENT FLOOR
 1/4" = 1'-0"



ANGIO ELECTRICAL RACEWAY PLAN - GROUND FLOOR
 1/8" = 1'-0"