

**Bramhall Radiology**  
**ANGIO RENOVATIONS**  
PORTLAND, ME

**ISSUED FOR CONSTRUCTION**  
08.24.10

CURRENT ISSUE STATUS

REV	DATE	DESCRIPTION
0		ISSUED FOR CONSTRUCTION

GRAPHIC SCALE: 0" = 1"

SCALE: 1/8" = 1'-0"

PROJECT MANAGER: DIV

IC/DRAWN BY: CDS

DATE OF RECORD: JPP

PROJECT NO.: 09022-01

DATE: 8.24.10

SHEET TITLE:  
**ANGIO POWER FLOOR PLAN**

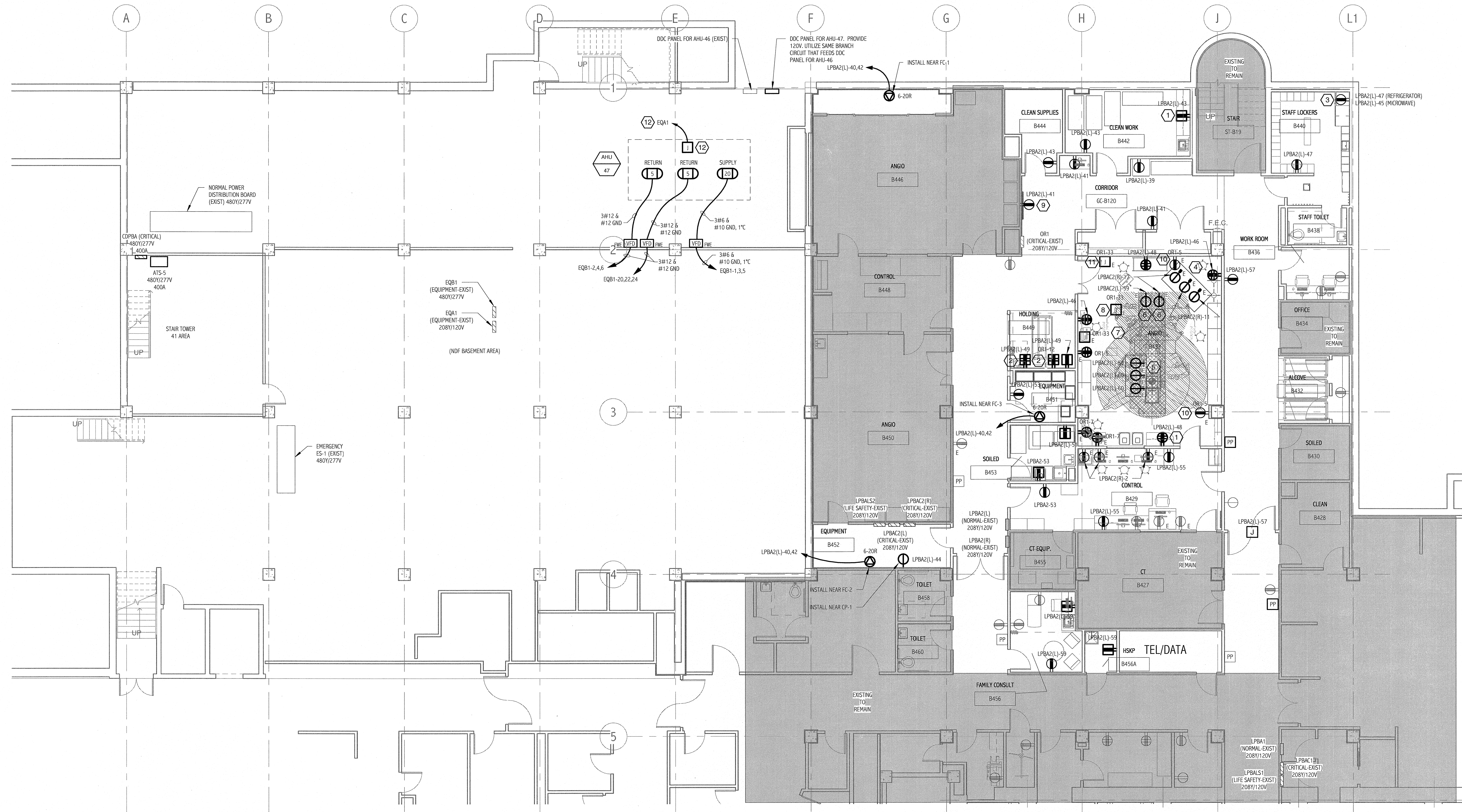
**NOTES:**

- SEE SHEET E-001 FOR LEGEND AND GENERAL NOTES.

**KEYED NOTES:**

- INSTALL 8" ABOVE COUNTER TO CENTER.
- INSTALL 54" AFF TO CENTER.
- INSTALL 1 DUPLEX RECEPTACLE FOR REFRIGERATOR AT 18" AND 1 DUPLEX RECEPTACLE FOR MICROWAVE AT 8" ABOVE COUNTER.
- NEMA LS-20R RECEPTABLES MOUNTED IN CEILING PANEL. PANEL PROVIDED BY MECHANICAL CONTRACTOR.
- NEMA LS-20R RECEPTABLES MOUNTED IN FLOOR BOX. BOX PROVIDED BY MECHANICAL CONTRACTOR.
- NEMA LS-20R RECEPTABLE MOUNTED IN CEILING.
- PROVIDE CONNECTION AT CEILING TO PATIENT LIFT. COORDINATE EXACT LOCATION WITH EQUIPMENT.
- PROVIDE CONNECTION TO STERIS LIGHT FIXTURE HEAD. ALSO PROVIDE 3/4" CONDUIT FROM FIXTURE HEAD TO STERIS WALL MOUNTED CONTROLLER. COORDINATE WITH OWNER FOR CONTROLLER LOCATION.
- INSTALL 48" AFF TO CENTER.
- INSTALL 60" AFF TO CENTER.
- PROVIDE 5 GANG BOX FOR SYSTEM CLOCK.
- PROVIDE CONNECTION TO UV LIGHTS. PROVIDE A SINGLE POLE, 20A, 120VOLT CIRCUIT BREAKER IN PANEL.
- SWITCHBOARD, SWBD-BB1 IS LOCATED IN THE 56 VAULT ELECTRICAL ROOM. PROVIDE A 3 POLE, 250A FRAME, 225A RATING PLUS, 480 VOLT, 65000 AIC, 90% RATED CIRCUIT BREAKER WITH LONG TIME, SHORT TIME, INSTANTANEOUS AND GROUND FAULT TRIP SETTINGS.

**2) ANGIO ROOF POWER PLAN**  
1/8" = 1'-0"



**1) ANGIO BASEMENT POWER PLAN**  
1/8" = 1'-0"

