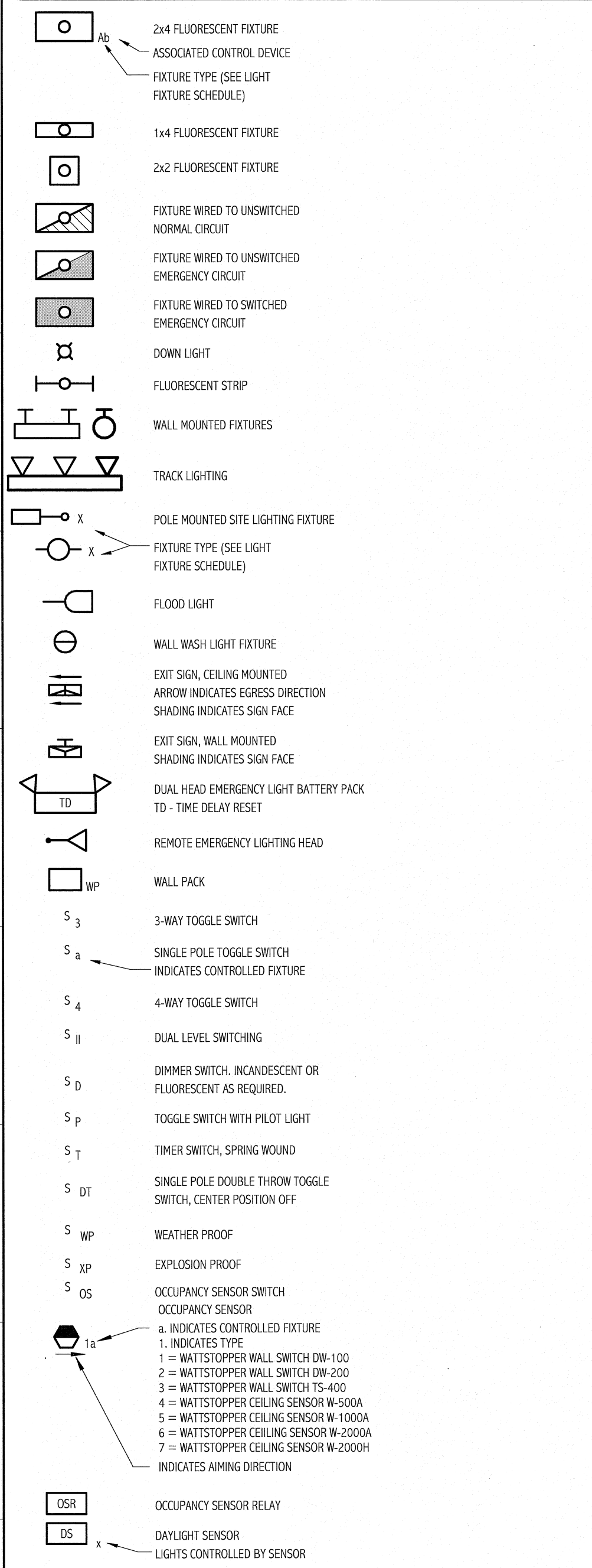
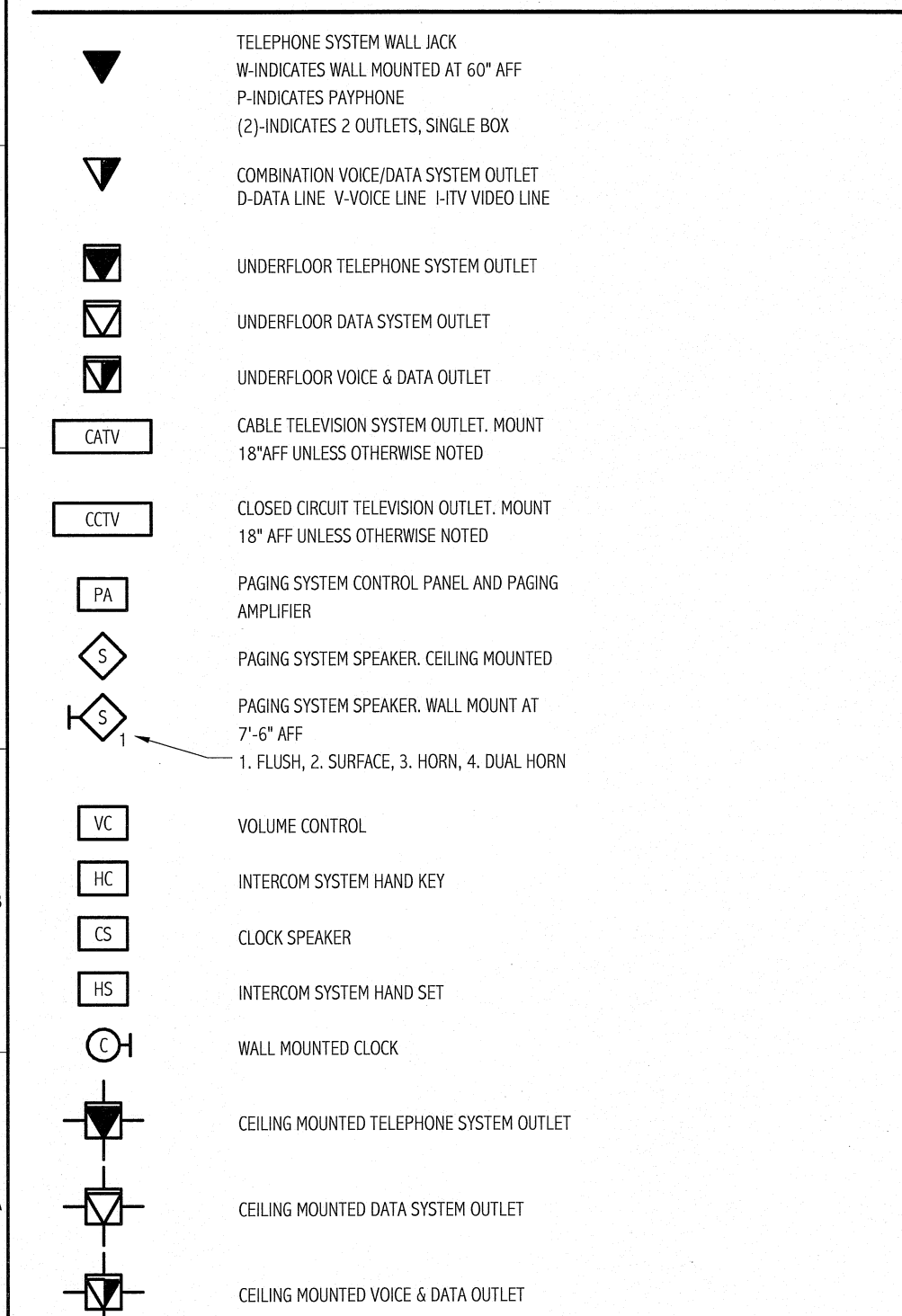


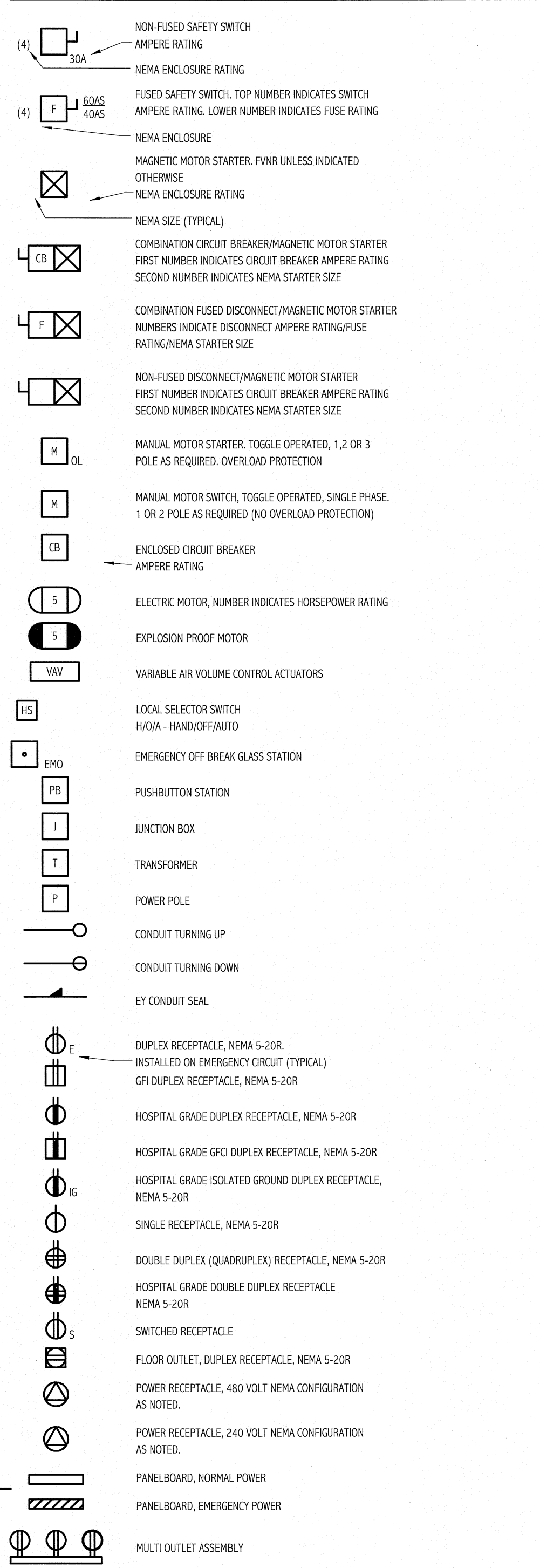
LIGHTING



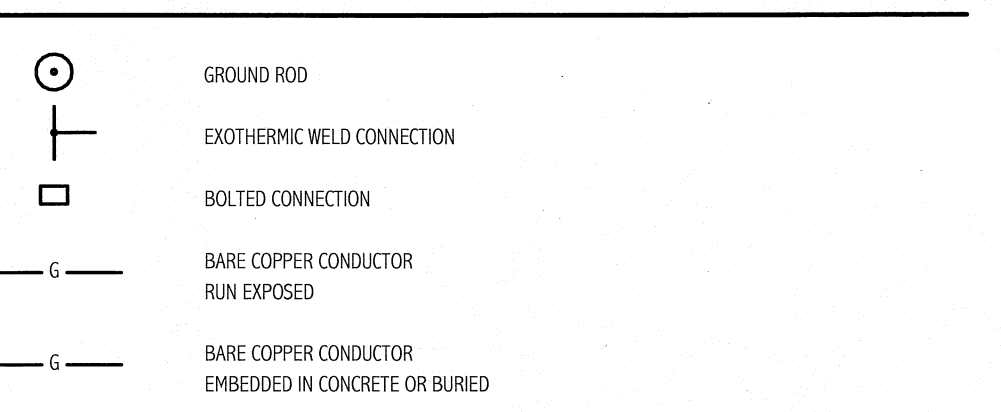
COMMUNICATION & DATA SYSTEMS



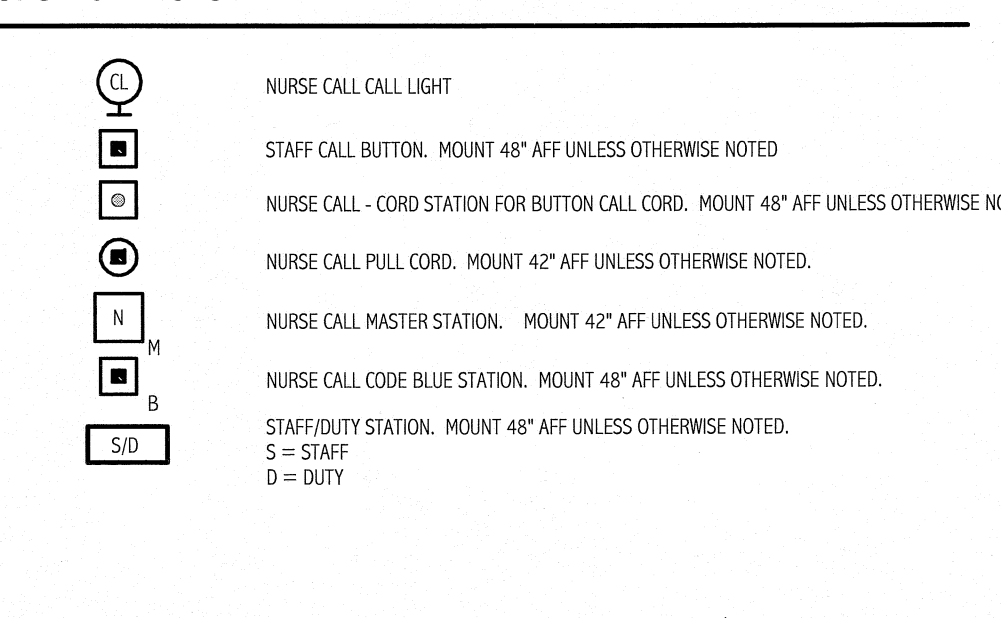
POWER



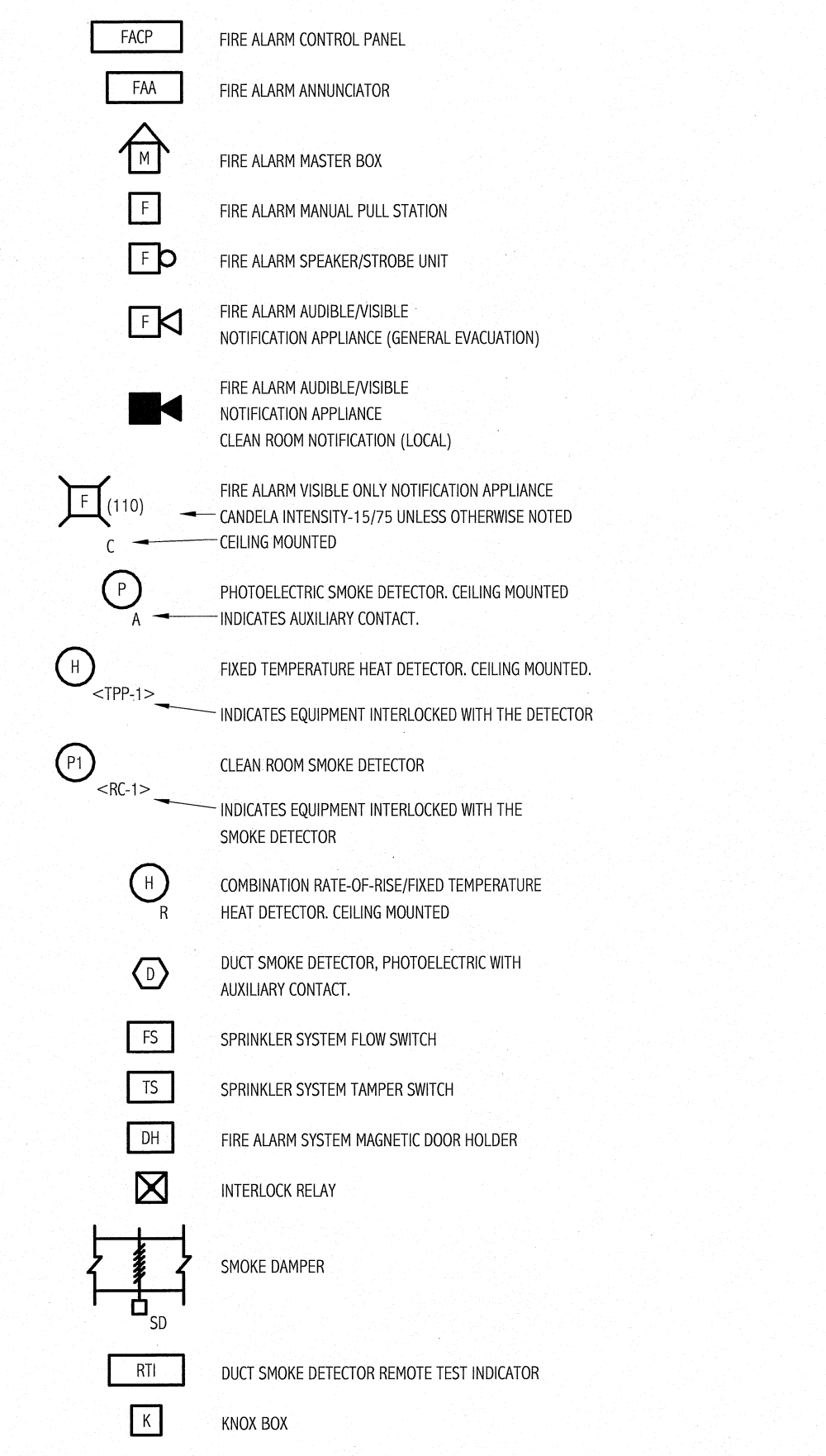
GROUNDING



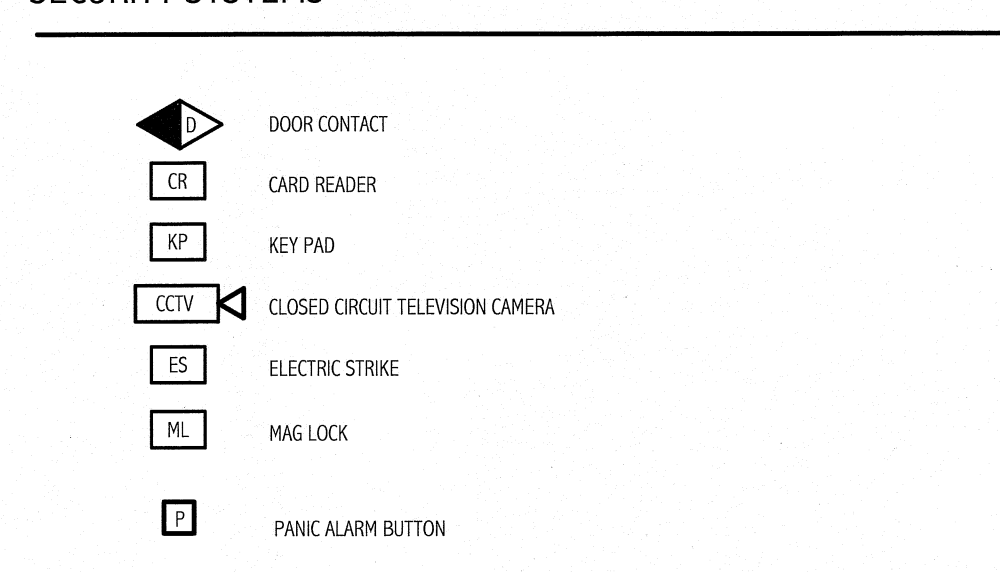
NURSE CALL SYSTEM



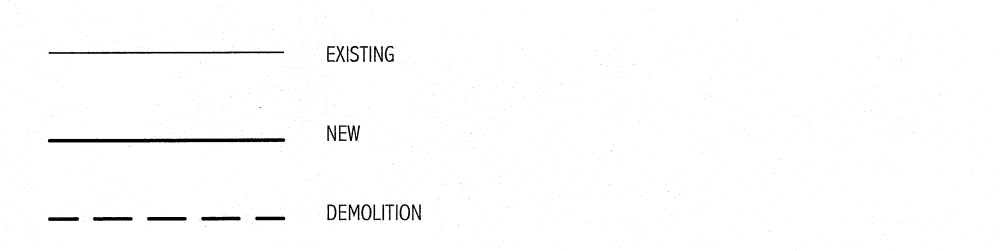
FIRE ALARM



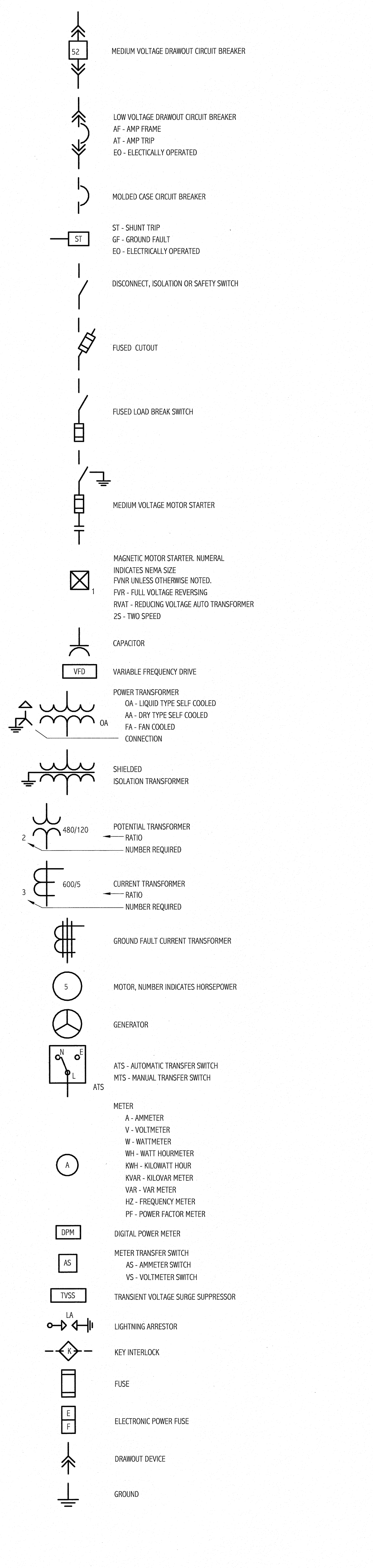
SECURITY SYSTEMS



LINE TYPES



ONE LINE DIAGRAM



ABBREVIATIONS

A,AMP	AMPERE	LA	LIGHTNING ARRESTER
AFF	ABOVE FINISHED FLOOR	LTG	LIGHTING
AFG	ABOVE FINISHED GRADE	MC	METAL CLAD
AHJ	AUTHORITY HAVING JURISDICTION	MCB	MAIN CIRCUIT BREAKER
AIC	AMPERE INTERRUPTING CAPACITY	MFR	MANUFACTURER
AWG	AMERICAN WIRE GAUGE	MI	MINERAL INSULATED
BFG	BELLOW FINISHED GRADE	MLO	MAIN LUG ONLY
BOS	BOTTOM OF STEEL	MTD	MOUNTED
C	CONDUIT, CONDUCTOR	MY	MEDIUM VOLTAGE
CATV	CABLE TELEVISION	NC	NORMALLY CLOSED
CB	CIRCUIT BREAKER	NEC	NATIONAL ELECTRICAL CODE
CCTV	CLOSED CIRCUIT TELEVISION	NEG	NEGATIVE
CPT	CONTROL POWER TRANSFORMER	NEUT	NEUTRAL
CT	CURRENT TRANSFORMER	NIC	NOT IN CONTRACT
CU	COPPER	NO	NORMALLY OPEN
DACT	DIGITAL ALARM COMMUNICATOR	NTS	NOT TO SCALE
DP	TRANSMITTER	PF	POWER FACTOR
DB	DIRECT BURIED	PH	PHASE
DISC	DISCONNECT	PVC	POLYVINYL CHLORIDE
DN	DOWN	RGS	RIGID STEEL CONDUIT
EMT	ELECTRICAL METALLIC TUBING	RSC	RIGID STEEL CONDUIT
EW	ELECTRIC WATER COOLER	RTD	RESISTANCE TEMPERATURE DETECTOR
FAA	FIRE ALARM ANNUNCIATOR	SN	SOLID NEUTRAL
FACP	FIRE ALARM CONTROL PANEL	STP	SHIELDED TWISTED PAIR
FBD	FURNISHED BY OTHERS	STT	SHIELDED TWISTED TRIPLET
FU	FUSE	SWBD	SWITCHBOARD
FWE	FURNISHED WITH EQUIPMENT	SWGR	SWITCHGEAR
GEN	GENERATOR	TOS	TOP OF STEEL
GFCI	GROUND FAULT CIRCUIT BREAKER	TRANSF	TRANSFORMER
GND	GROUND	TVSS	TRANSIENT VOLTAGE SURGE SUPPRESSOR
HP	HORSEPOWER	V	VOLT
HTR	HEATER	VA	VOLT-AMPERE
IG	ISOLATED GROUND	VAR	VOLT-AMPERE REACTIVE
IMC	INTERMEDIATE METAL CONDUIT	WM	WATT METER
K	KILO	WP	WEATHER PROOF
KCML	THOUSAND CIRCULAR MILS	XFMR	TRANSFORMER
KV	KILOVOLT	XP	EXPLOSION PROOF
KVA	KILOVOLT-AMPERE		
KVAR	KILOVOLT-AMPERE REACTIVE		
KW	KILOWATT		
KWH	KILOWATT-HOUR		

GENERAL NOTES:

- ALL WORK SHALL BE PERFORMED IN ACCORDANCE WITH NFPA-70, NATIONAL ELECTRICAL CODE (NEC).
- ALL MOTOR SAFETY SWITCHES, DISCONNECTS AND MOTOR STARTERS ARE PROVIDED BY DIVISION 260000 UNLESS NOTED AS FURNISHED WITH EQUIPMENT (FE).
- UNLESS OTHERWISE NOTED CONVENIENCE RECEPTACLES SHALL BE MOUNTED 18-INCHES AFF, LIGHTING TOGGLE SWITCHES 48-INCHES AFF, DATA SYSTEM OUTLETS 18-INCHES AFF, FIRE ALARM NOTIFICATION DEVICES 80-INCHES AFF OR 6-INCHES BELOW CEILING, WHICHEVER IS LOWER, AND FIRE ALARM MANUAL PULL STATIONS 48-INCHES TO TOP OF DEVICE.
- ALL PENETRATIONS THROUGH FLOORS, RATED WALLS AND PARTITIONS SHALL BE SEALED WITH UL APPROVED FIRE SEALANT MATERIAL TO MAINTAIN THE RATING OF SEPARATION.
- ALL ENCLOSURES, CONDUIT BODIES AND THEIR COVERS CONTAINING FIRE ALARM SYSTEM CONDUCTORS SHALL BE PAINTED RED.
- AN EQUIPMENT GROUNDING CONDUCTOR SHALL BE INSTALLED WITH EVERY FEEDER AND BRANCH CIRCUIT.
- UNLESS OTHERWISE NOTED WIRING SHALL BE 2#12 AWG CONDUCTORS AND #12 GND. HOME RUNS FED FROM 20A-1P CIRCUITS IN EXCESS OF 100 FEET SHALL BE #10 AWG.
- FLEXIBLE CONNECTIONS TO MOTORS SHALL BE LIQUID TIGHT FLEXIBLE METAL CONDUIT, UNLESS OTHERWISE NOTED.
- LIGHTING TOGGLE SWITCHES SHALL BE COMMERCIAL SPECIFICATION GRADE 120/277 VOLT, SIDE WIRED AND PROVIDED WITH GROUNDING SCREW. DIMMING SWITCHES SHALL BE COMMERCIAL SPECIFICATION GRADE WITH LINEAR SLIDE AND ON/OFF SWITCH. LEVITON, PASS & SEYMOUR OR APPROVED EQUAL. COLOR BY ARCHITECT.
- CONVENIENCE RECEPTACLES SHALL BE HOSPITAL GRADE, GROUNDING TYPE, NEMA 5-20R, SIDE WIRED. HUBBELL, PASS & SEYMOUR OR APPROVED EQUAL. RECEPTACLES FED FROM EMERGENCY CIRCUITS SHALL BE RED. COLOR OF OTHERS BY ARCHITECT. ALL WALL PLATES SHALL BE PROVIDED WITH AN ADHESIVE LABEL STATING PANELBOARD AND CIRCUIT NUMBER.
- PROVIDE WALL PLATES FOR ALL WIRING DEVICES, NYLON SMOOTH TYPE. RECEPTACLE WALL PLATES SHALL BE RED FOR EMERGENCY CIRCUITS. COLOR OF OTHERS BY ARCHITECT. ALL WALL PLATES SHALL BE PROVIDED WITH AN ADHESIVE LABEL STATING PANELBOARD AND CIRCUIT NUMBER.
- CONTRACTOR TO PROVIDE BOX IN WALL AND CONDUIT WITH PULL STRING FROM BOX TO ABOVE ACCESSIBLE CEILING FOR ALL VOICE/DATA LOCATIONS.
- CONTRACTOR TO PROVIDE BOX IN WALL 48" AFF, AND CONDUIT WITH PULL STRING FROM BOX TO ABOVE ACCESSIBLE CEILING FOR ALL CARD READER LOCATIONS.

GENERAL NOTE

- ALL GENERAL NOTES, SYMBOL LISTS, AND DETAILS ARE TO BE CONSIDERED AS APPLICABLE TO ALL ELECTRICAL DRAWINGS FOR THIS PROJECT. SYMBOLS AND ABBREVIATIONS SHOWN ON THIS SHEET ARE FOR REFERENCE ONLY AND DO NOT INDICATE THEIR INCORPORATION IN THE DESIGN.

144 Fox Street, P.O. Box 618
Portland, Maine 04104
Tel: (207) 772-2846
Fax: (207) 772-1070
www.angio.com

ARCHITECTURE
ENGINEERING
PLANNING
INTERIOR DESIGN
COMMISSIONING

SMART

STATE OF MAINE
LICENSED PROFESSIONAL ARCHITECT
NO. 10000
EXPIRES 12/31/2010

ISSUED FOR CONSTRUCTION
08.24.10

NO.	DATE	DESCRIPTION
1	8.24.10	ISSUED FOR CONSTRUCTION

GRAPHIC SCALE:
0" 1"

SCALE: 1/2" = 1'-0"
PROJECT MANAGER: DIV
DRAWN BY: CDS
DATE OF RECORD: JPP
PROJECT NO.: 09022-01
DATE: 8.24.10
SHEET TITLE: ANGIO LEGEND AND GENERAL NOTES
SHEET No.: E-001