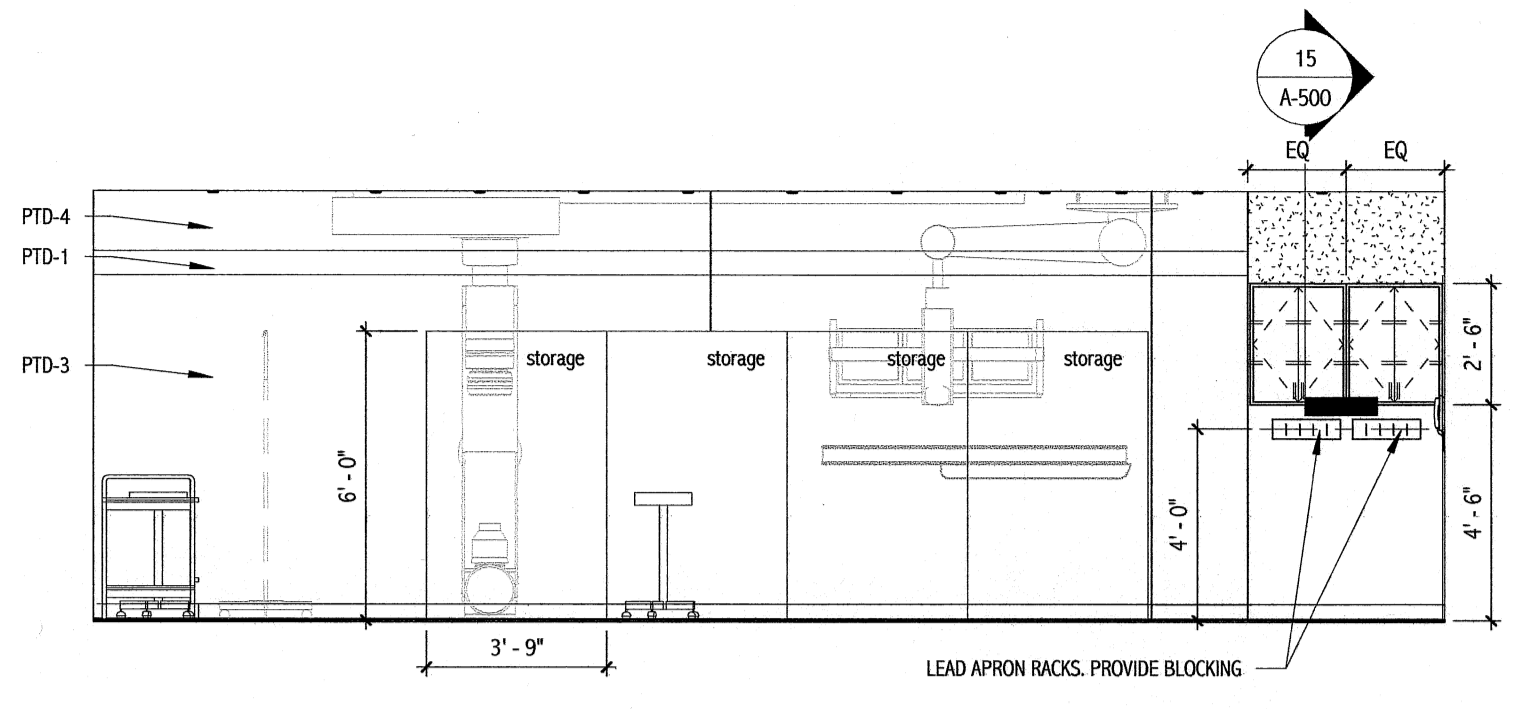
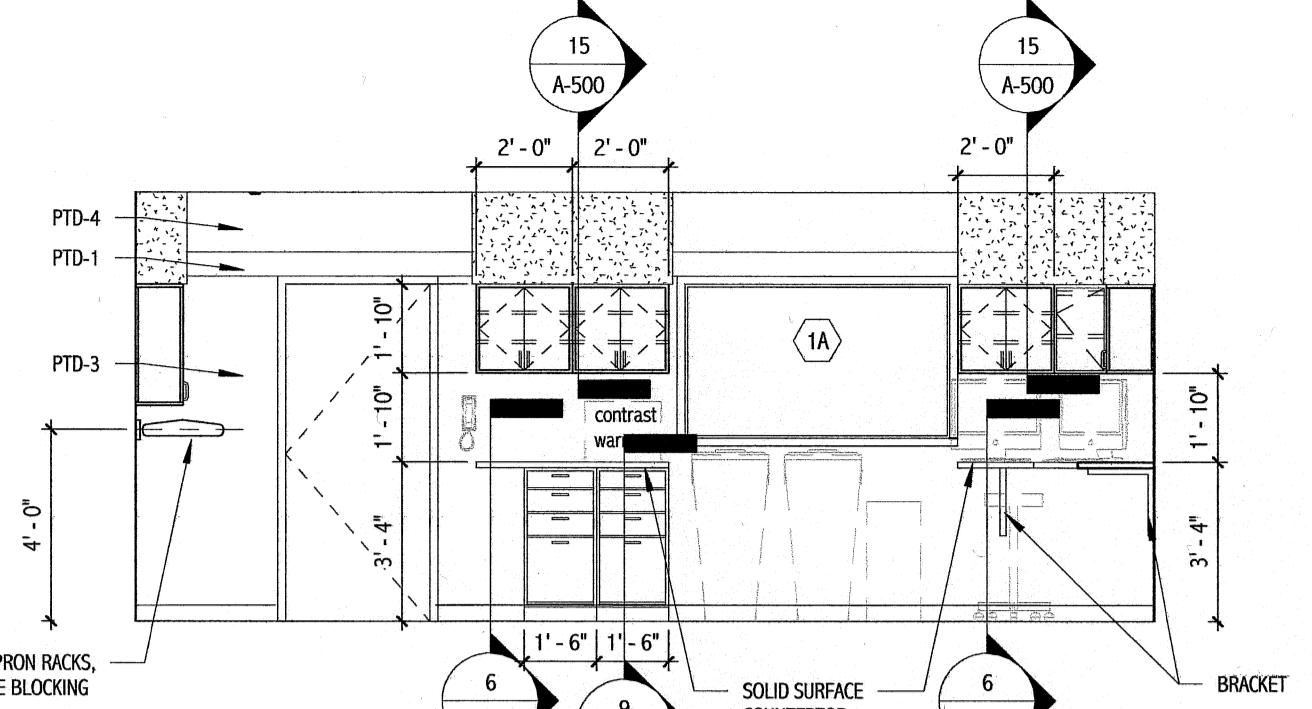


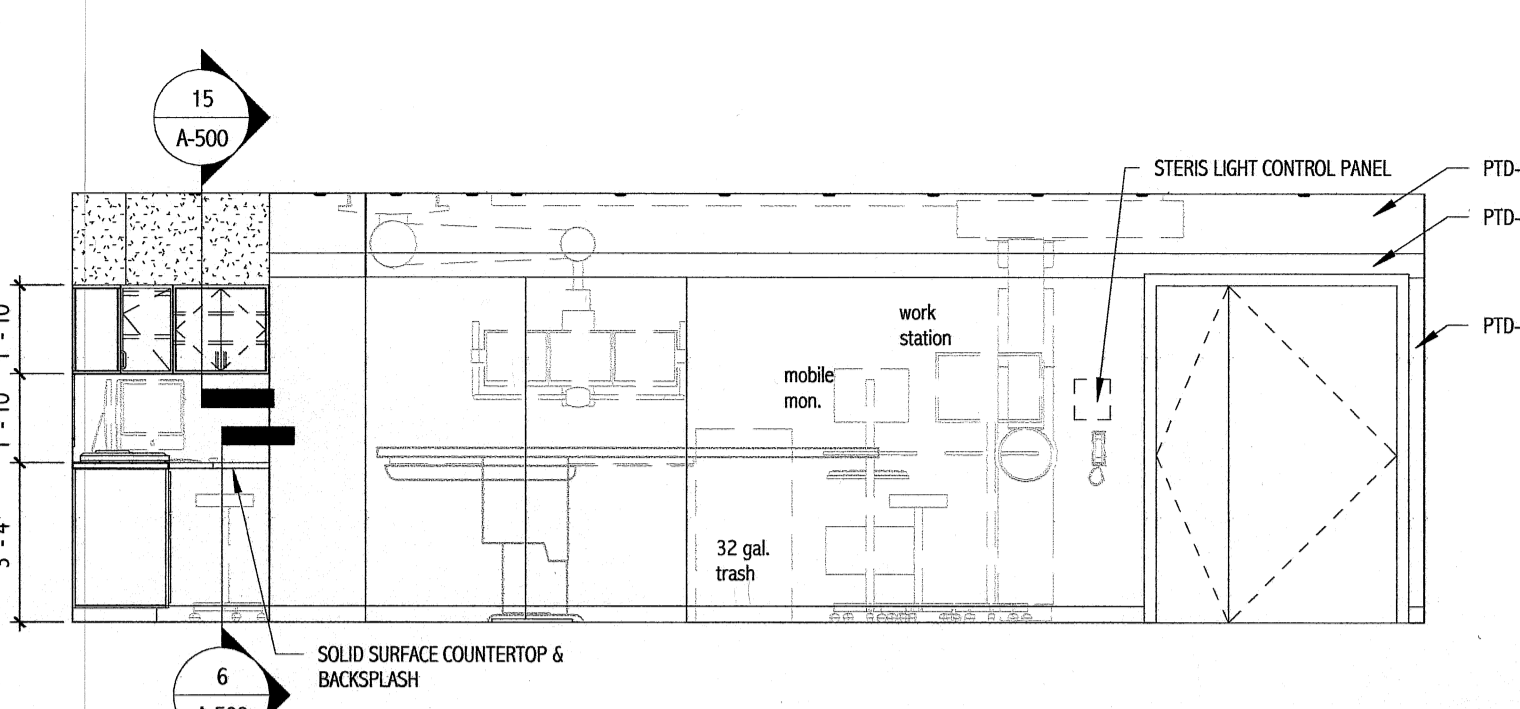
1 ANGIO - A
1/4" = 1'-0"



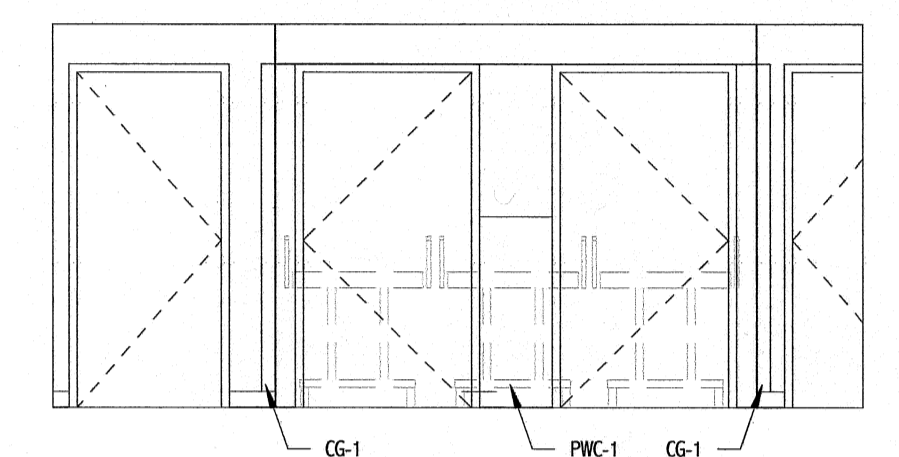
2 ANGIO - B
1/4" = 1'-0"



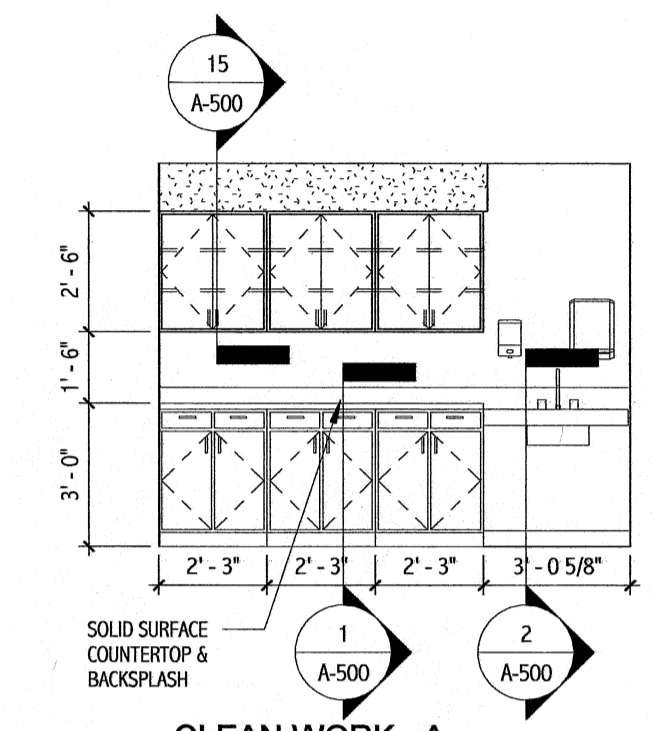
3 ANGIO - C
1/4" = 1'-0"



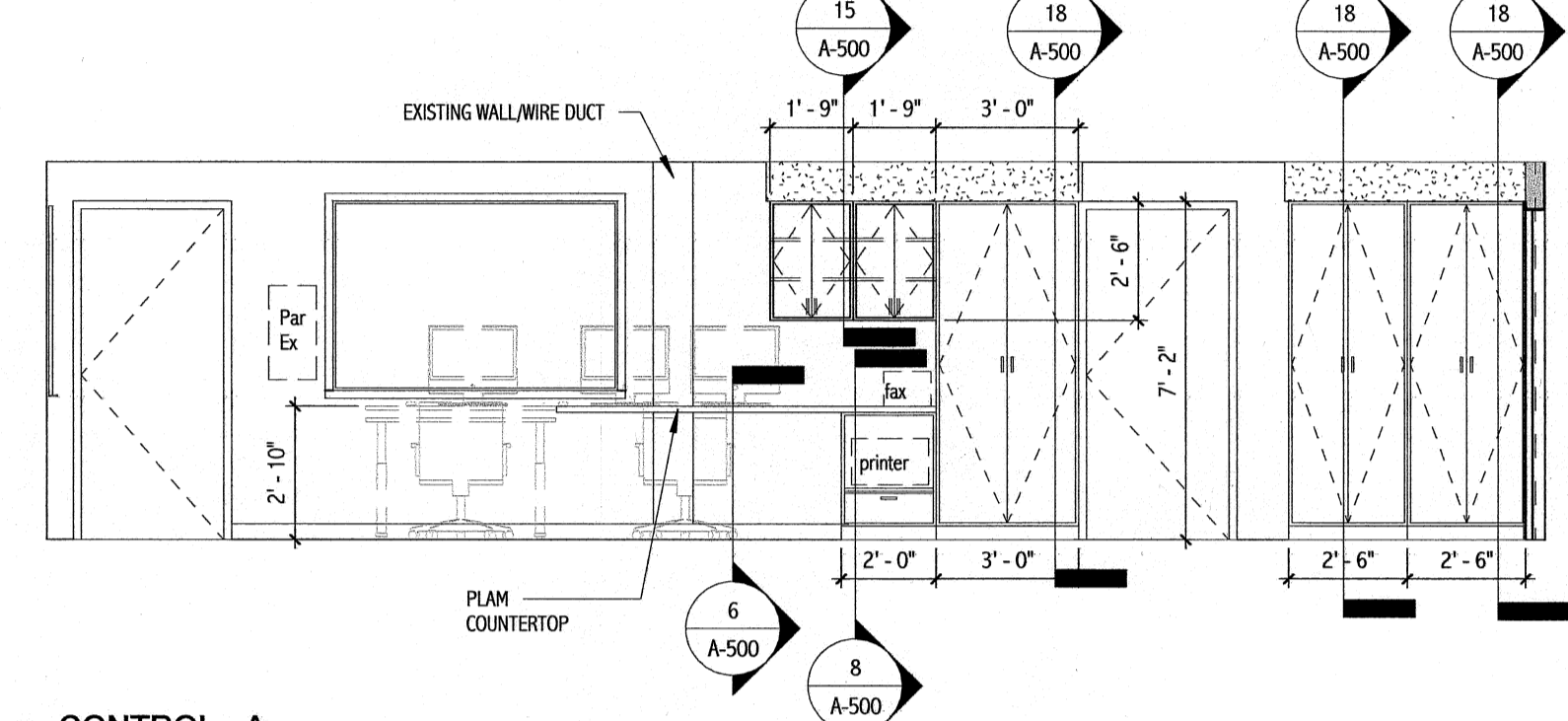
4 ANGIO - D
1/4" = 1'-0"



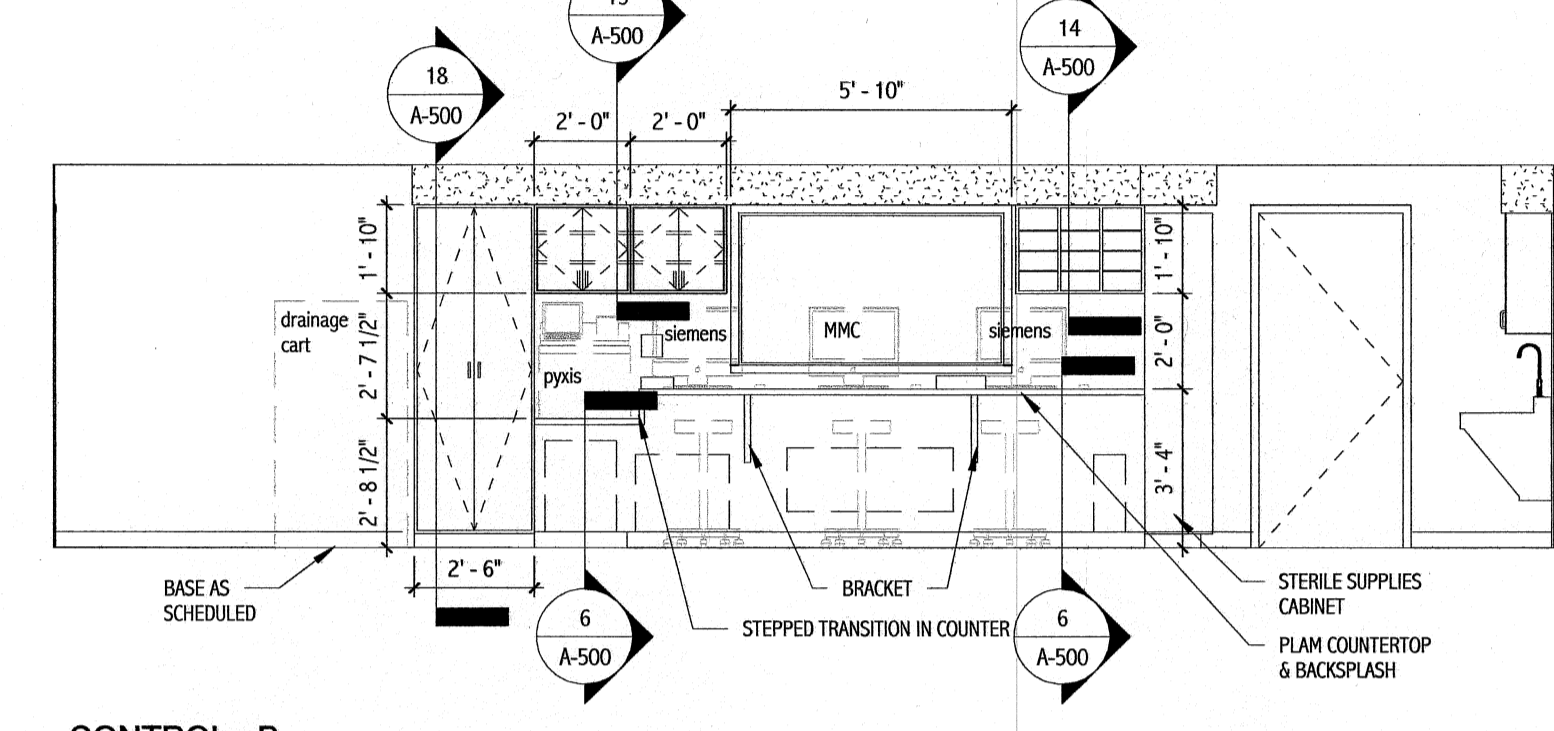
5 ALCOVE - A
1/4" = 1'-0"



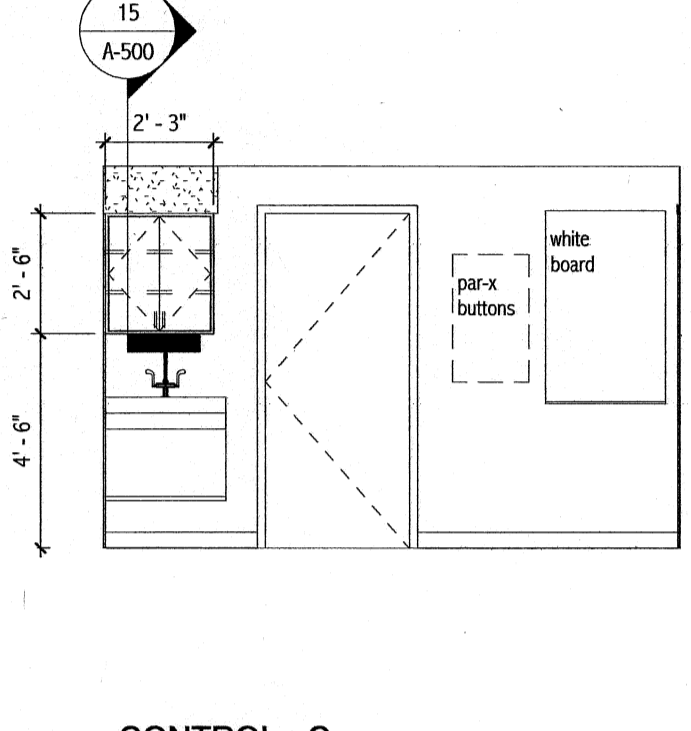
6 CLEAN WORK - A
1/4" = 1'-0"



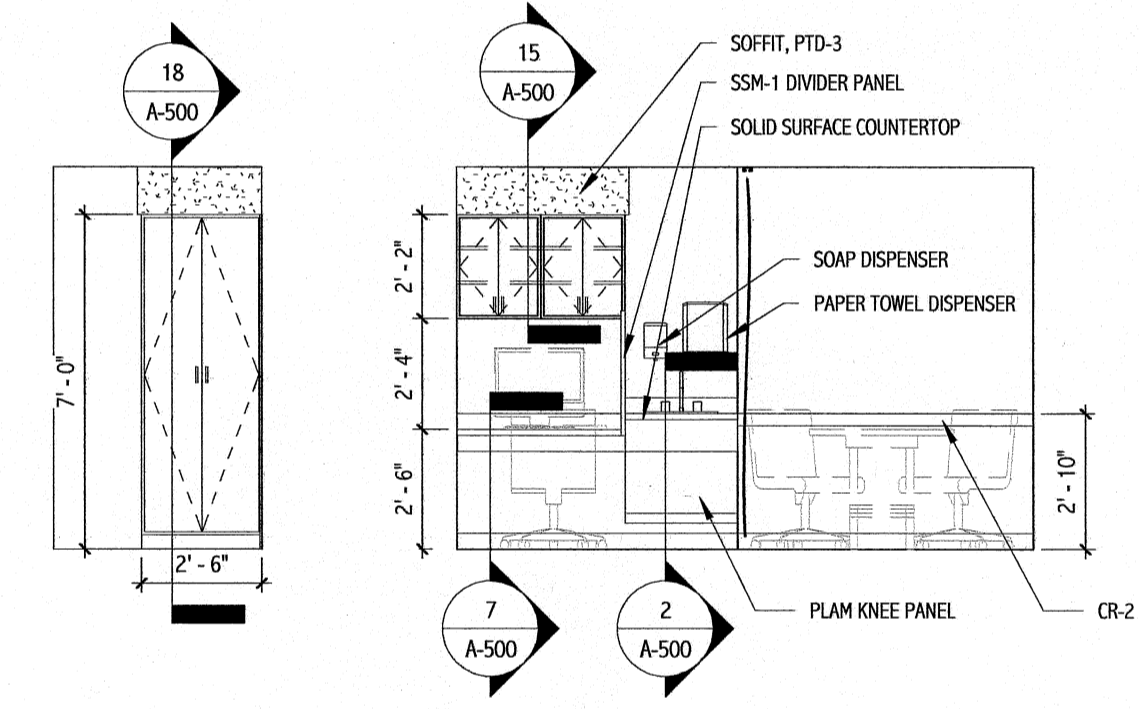
7 CONTROL - A
1/4" = 1'-0"



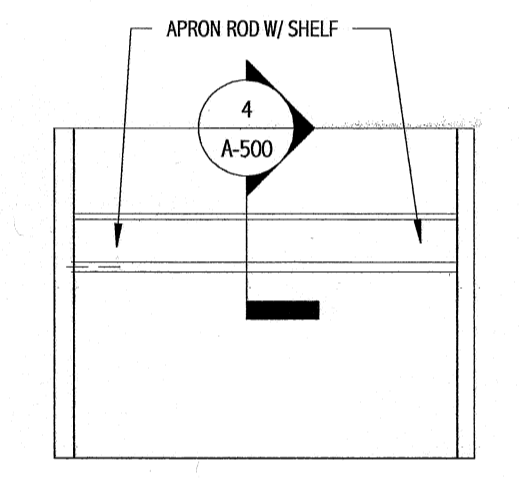
8 CONTROL - B
1/4" = 1'-0"



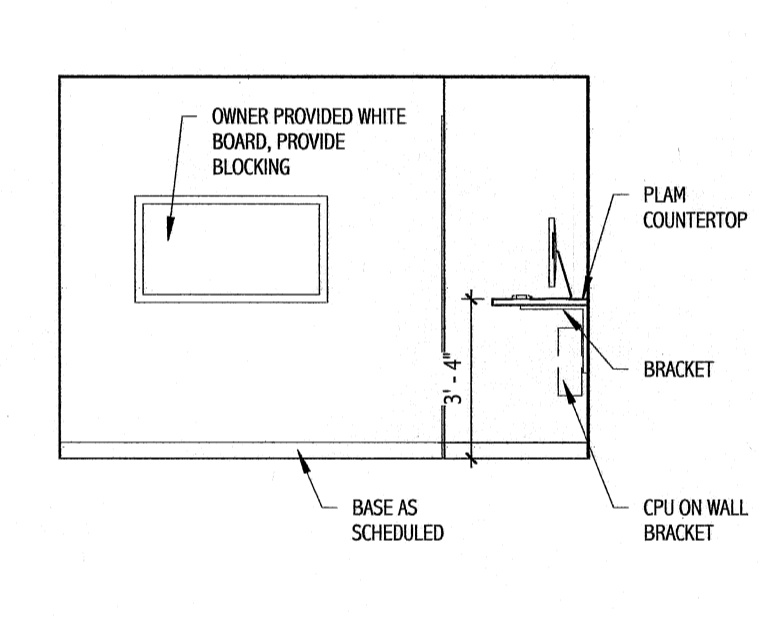
25 CONTROL - C
1/4" = 1'-0"



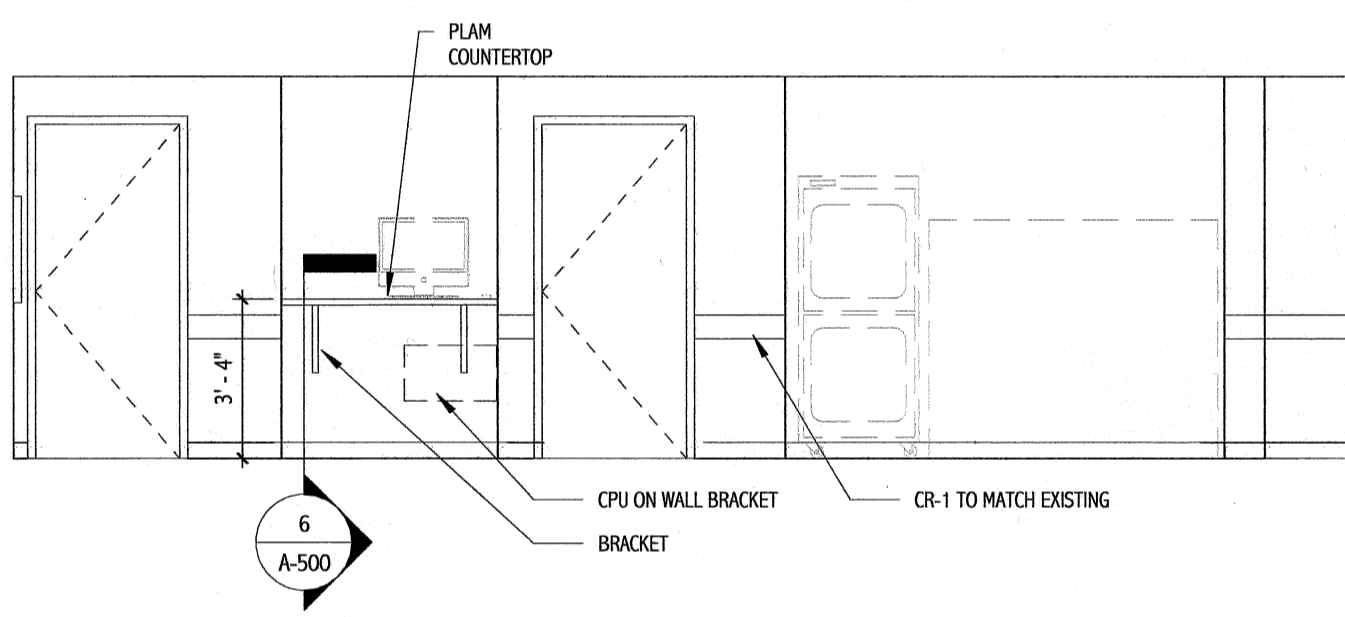
9 FAMILY CONSULT - A
1/4" = 1'-0"



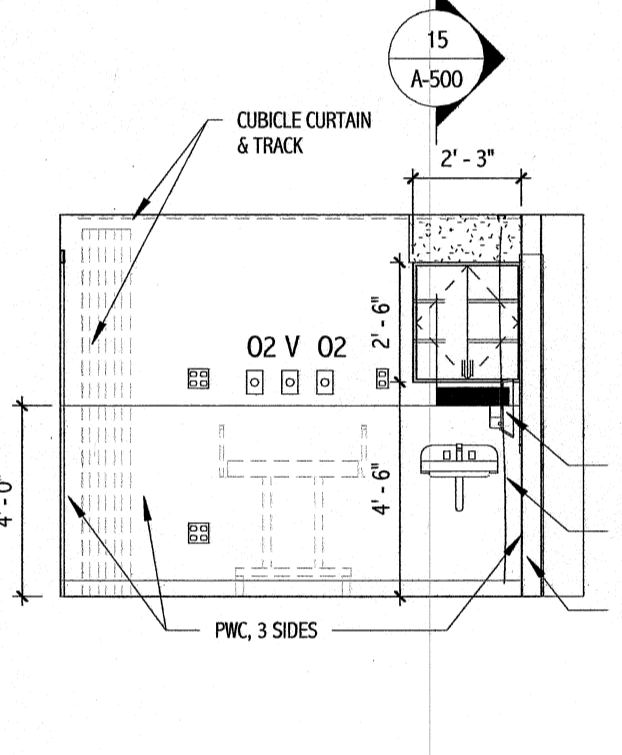
10 CORRIDOR - A
1/4" = 1'-0"



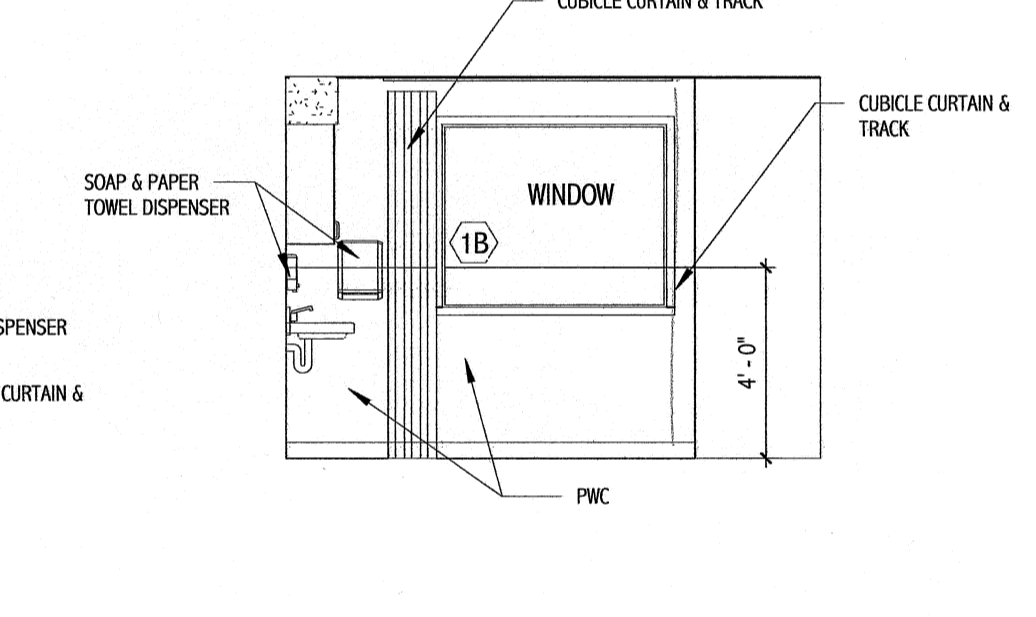
11 CORRIDOR - B
1/4" = 1'-0"



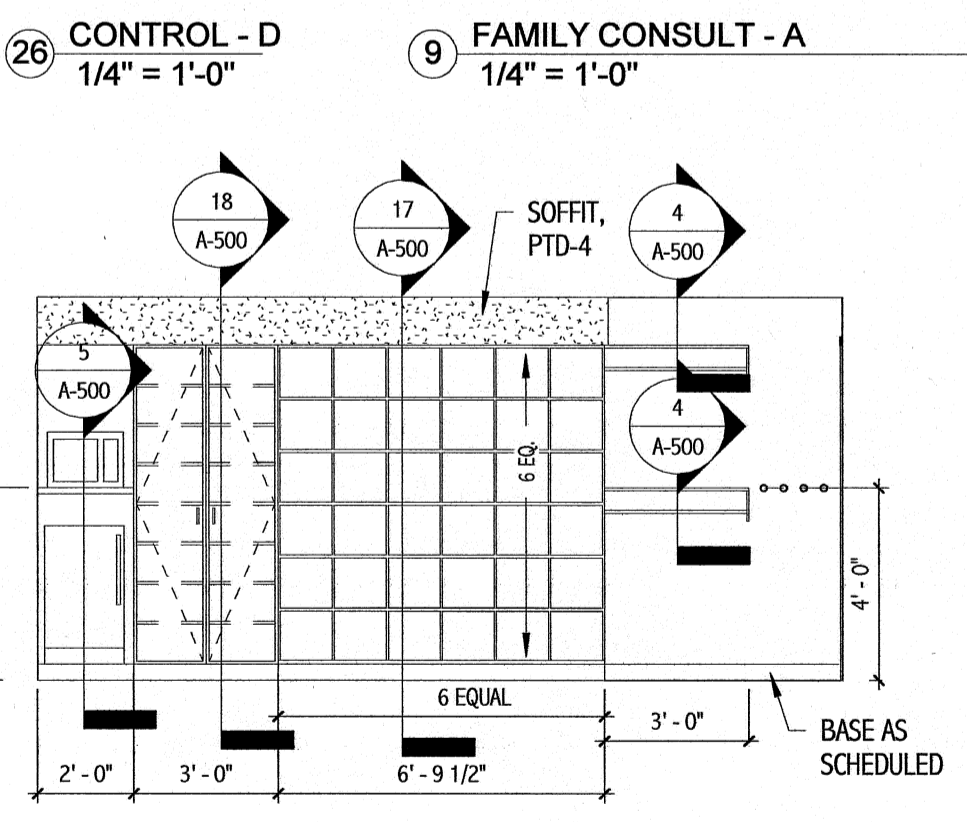
12 CORRIDOR - C
1/4" = 1'-0"



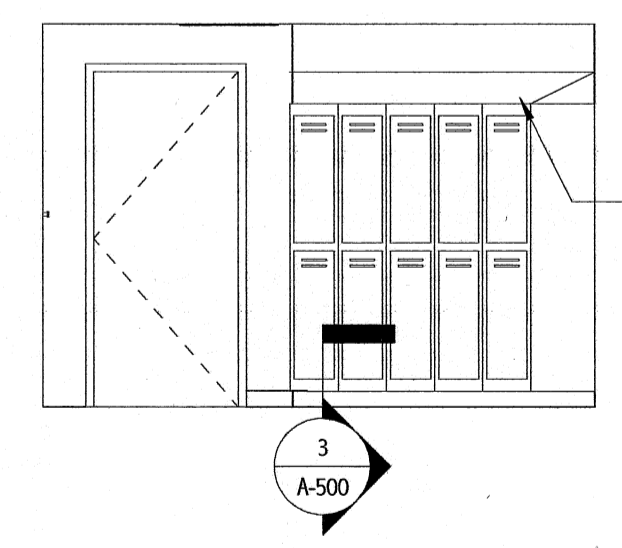
13 HOLDING - A
1/4" = 1'-0"



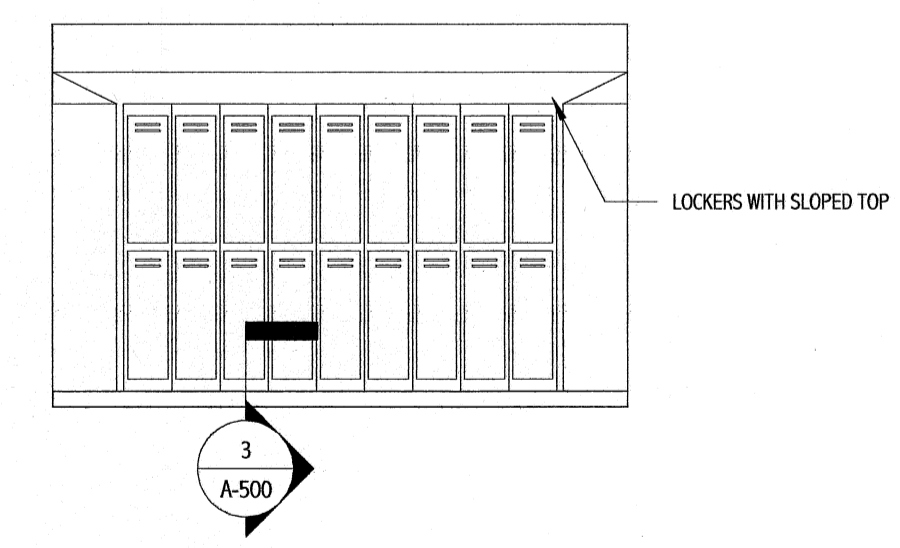
18 HOLDING - B
1/4" = 1'-0"



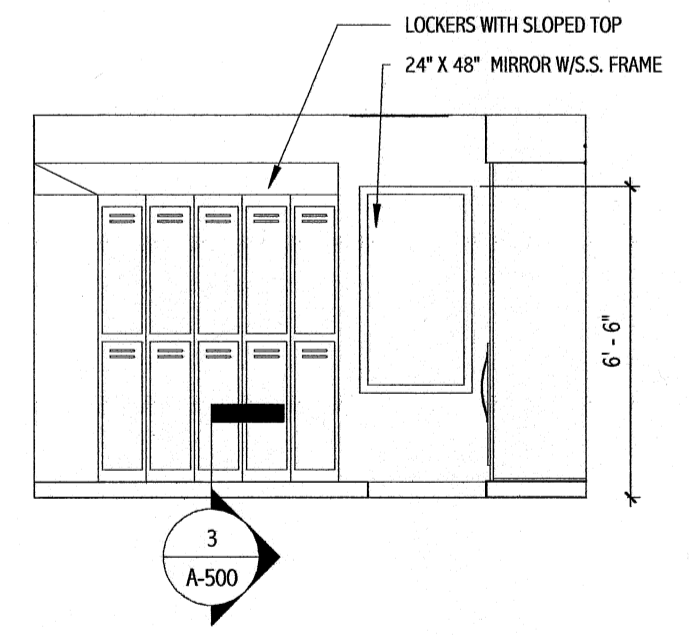
14 STAFF LOCKER - A
1/4" = 1'-0"



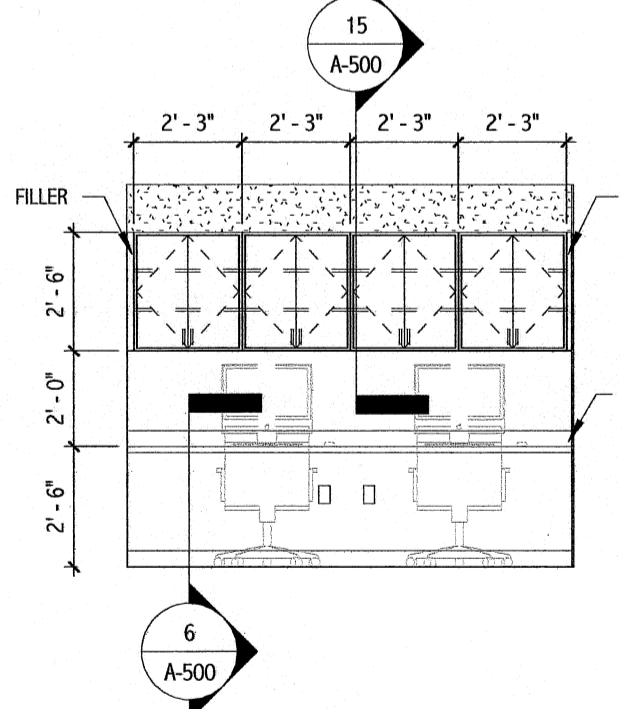
15 STAFF LOCKER - B
1/4" = 1'-0"



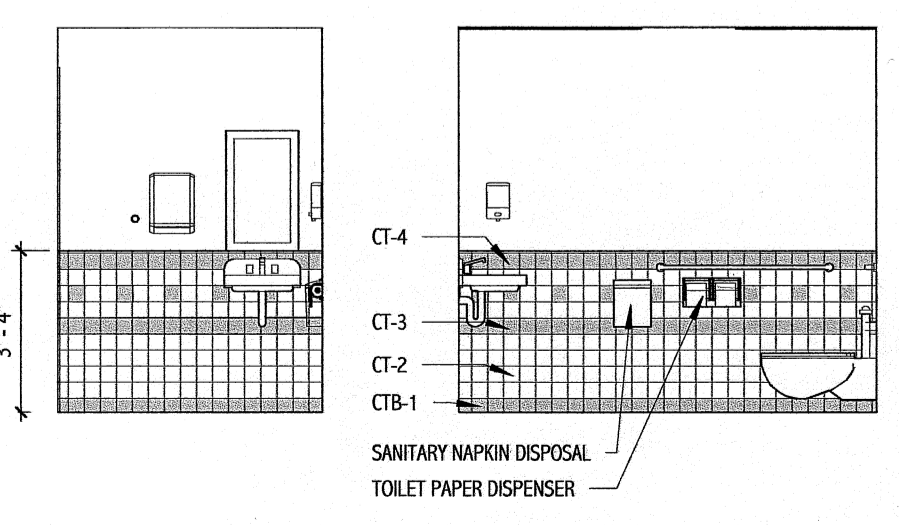
16 STAFF LOCKER - C
1/4" = 1'-0"



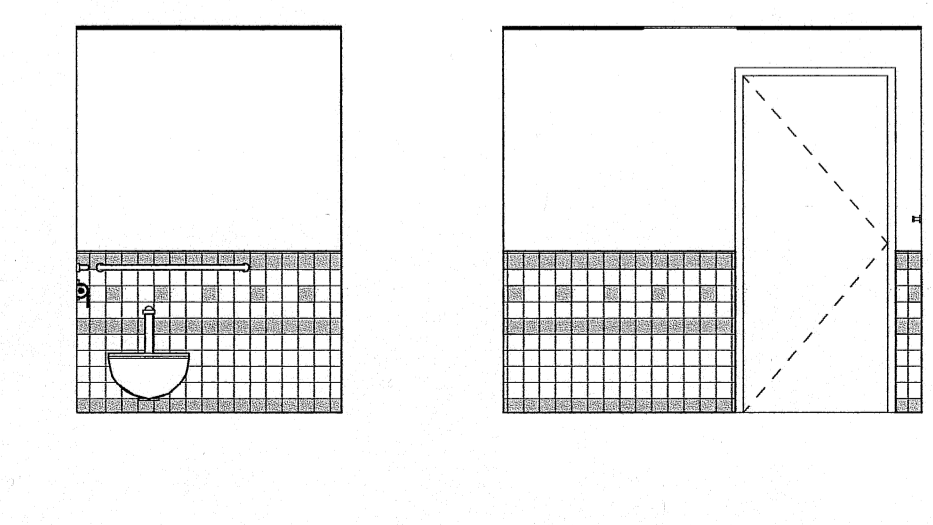
17 STAFF LOCKER - D
1/4" = 1'-0"



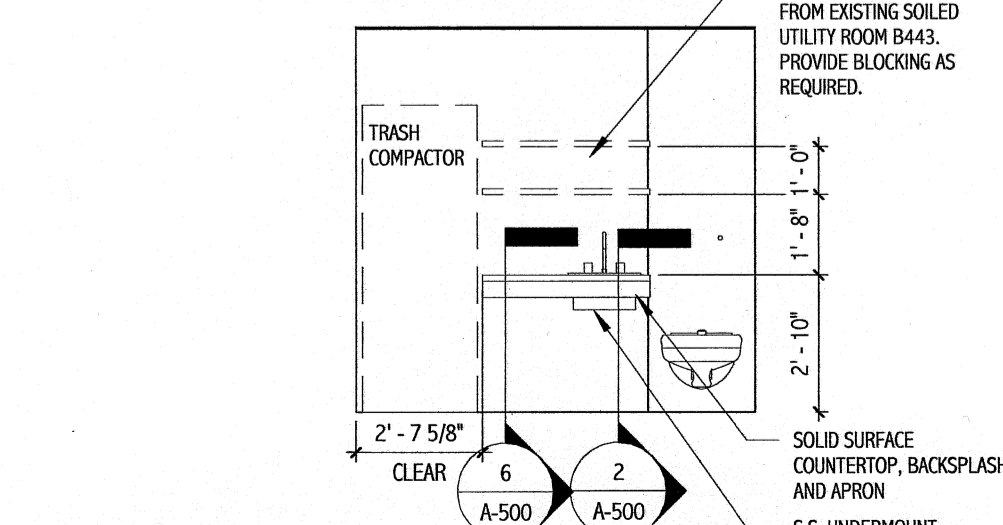
20 WORK ROOM - B
1/4" = 1'-0"



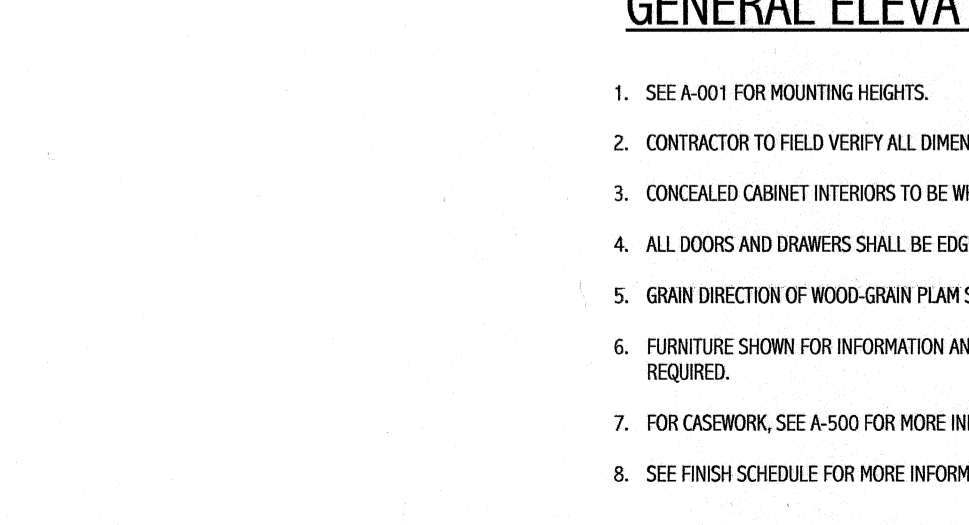
21 TOILET - A
1/4" = 1'-0"



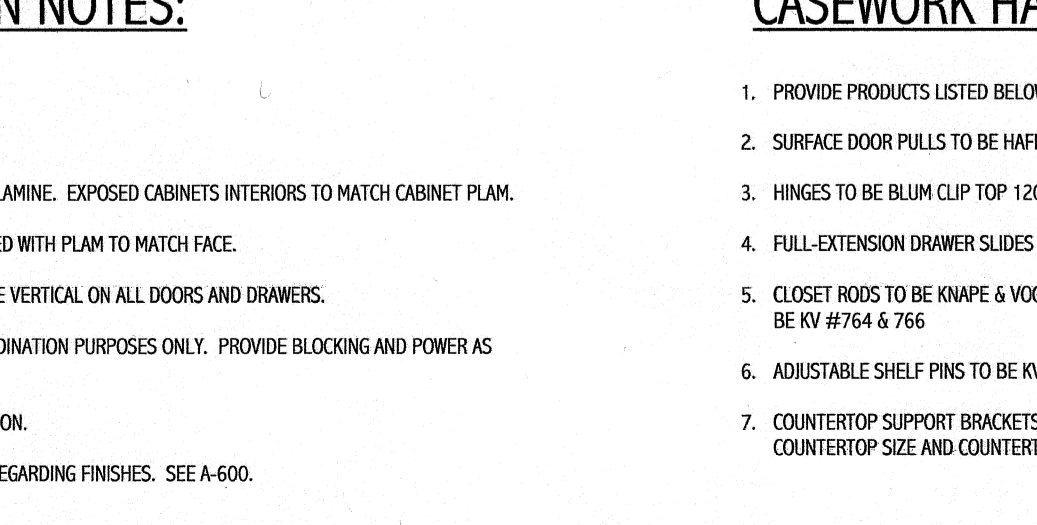
22 TOILET - B
1/4" = 1'-0"



19 SOILED UTILITY - A
1/4" = 1'-0"



23 TOILET - C
1/4" = 1'-0"



24 TOILET - D
1/4" = 1'-0"

GENERAL ELEVATION NOTES:

- SEE A-001 FOR MOUNTING HEIGHTS.
- CONTRACTOR TO FIELD VERIFY ALL DIMENSIONS.
- CONCEALED CABINET INTERIORS TO BE WHITE MELAMINE. EXPOSED CABINET INTERIORS TO MATCH CABINET PLAM.
- ALL DOORS AND DRAWERS SHALL BE EDGE Banded WITH PLAM TO MATCH FACE.
- GRAN DIRECTION OF WOOD GRAIN PLAM SHALL BE VERTICAL ON ALL DOORS AND DRAWERS.
- FURNITURE SHOWN FOR INFORMATION AND COORDINATION PURPOSES ONLY. PROVIDE BLOCKING AND POWER AS REQUIRED.
- FOR CASEWORK, SEE A-500 FOR MORE INFORMATION.
- SEE FINISH SCHEDULE FOR MORE INFORMATION REGARDING FINISHES. SEE A-600.

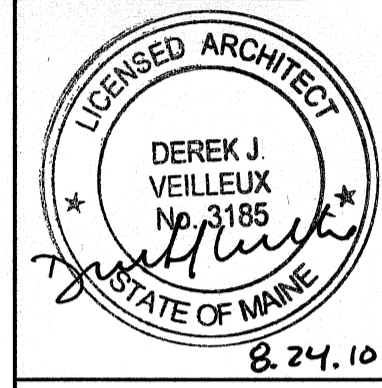
CASEWORK HARDWARE NOTES:

- PROVIDE PRODUCTS LISTED BELOW OR SUBMIT ALTERNATE PRODUCTS FOR APPROVAL.
- SURFACE DOOR PULLS TO BE HAFELE #115.60.602 SATIN FINISHED STAINLESS STEEL BOW PULLS.
- HINGES TO BE BULM CLIP TOP 120 DEGREE CONCEALED EUROPEAN-STYLE HINGE.
- FULL-EXTENSION DRAWER SLIDES TO BE KNAPE & VOGT #8400 SERIES WITH WHITE EPOXY FINISH.
- CLOSET RODS TO BE KNAPE & VOGT #770-5 HEAVY DUTY 1-5/16" O.D. STEEL TUBE W/ CHROME FINISH. FLANGES TO BE KV #764 & 766.
- ADJUSTABLE SHELF PINS TO BE KV #345 NP.
- COUNTERTOP SUPPORT BRACKETS TO BE BRAXX BRACKET. MODEL NUMBER SHOULD BE DETERMINED BY COUNTERTOP SIZE AND COUNTERTOP LOAD.

144 Cox Street, Box 618
Portland, Maine 04104
Tel: (207) 782-3846
Fax: (207) 782-3070
www.luminc.com

ARCHITECTURE
ENGINEERING
PLANNING
INTERIOR DESIGN
COMMISSIONING

SMRT



Bramhall Radiology
ANGIO RENOVATIONS
PORTLAND, ME

ISSUED FOR CONSTRUCTION
8.24.10

CURRENT ISSUE STATUS:

REV	DESCRIPTION	DATE
0	ISSUED FOR CONSTRUCTION	8.24.10

GRAPHIC SCALE:
0' 1'

SCALE: 1/4" = 1'-0"

PROJECT MANAGER: DIV
ARCHITECT: ART
DATE OF RECORD: DIV
PROJECT NO: 09022-01
DATE: 8.24.10

SHEET TITLE:
INTERIOR ELEVATIONS

SHEET No. **A-200**