

GENERAL NOTES:

- REFER TO G-001 FOR PROJECT GENERAL NOTES AND ABBREVIATIONS.

REFLECTED CEILING NOTES:

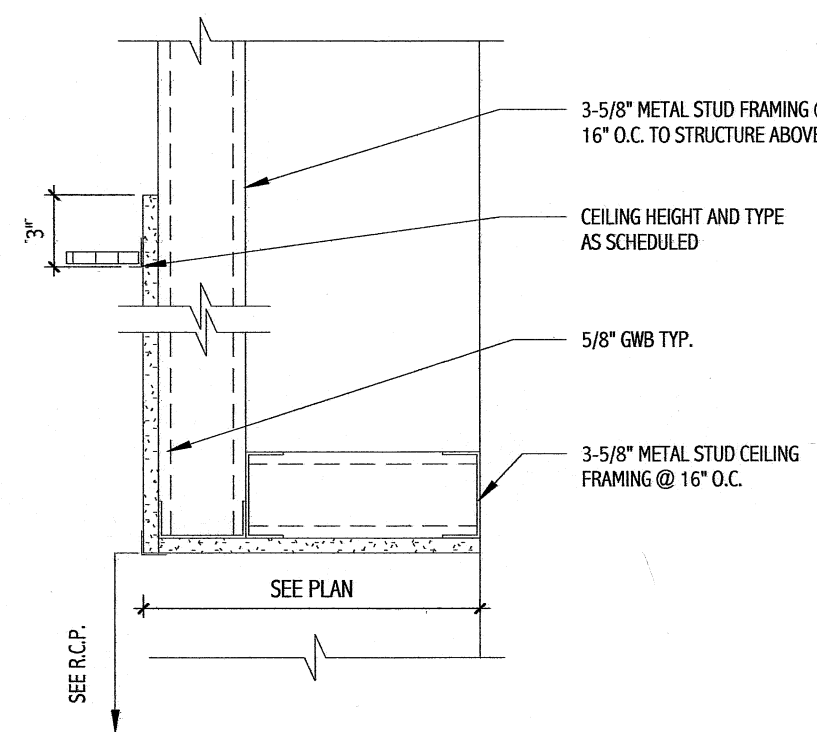
- UNLESS INDICATED OTHERWISE, CENTER CEILING GRIDS IN ROOMS. USE HALF TILES OR GREATER AT PERIMETERS WHERE POSSIBLE.
- ALIGN CEILING ITEMS AS SHOWN, WITH COMMON CENTERLINES, TYPICALLY. CENTER ITEMS IN CEILING, OR IN AREAS UNLESS INDICATED OTHERWISE.
- REFER TO ROOM FINISH SCHEDULE FOR CEILING FINISHES TO BE PROVIDED.
- FIRE SPRINKLERS SHALL BE CENTERED IN CEILING TILE SQUARES.
- FIRE SPRINKLERS SHALL BE LOCATED IN ALIGNMENT WITH OTHER CEILING ITEMS TYPICALLY.
- FIRE SPRINKLERS SHALL BE PLACED TO COORDINATE WITH LIGHT FIXTURE POSITIONS INDICATED.
- REFER TO FLOOR PLANS FOR EQUIPMENT SCHEDULE.

SYMBOLS LEGEND:

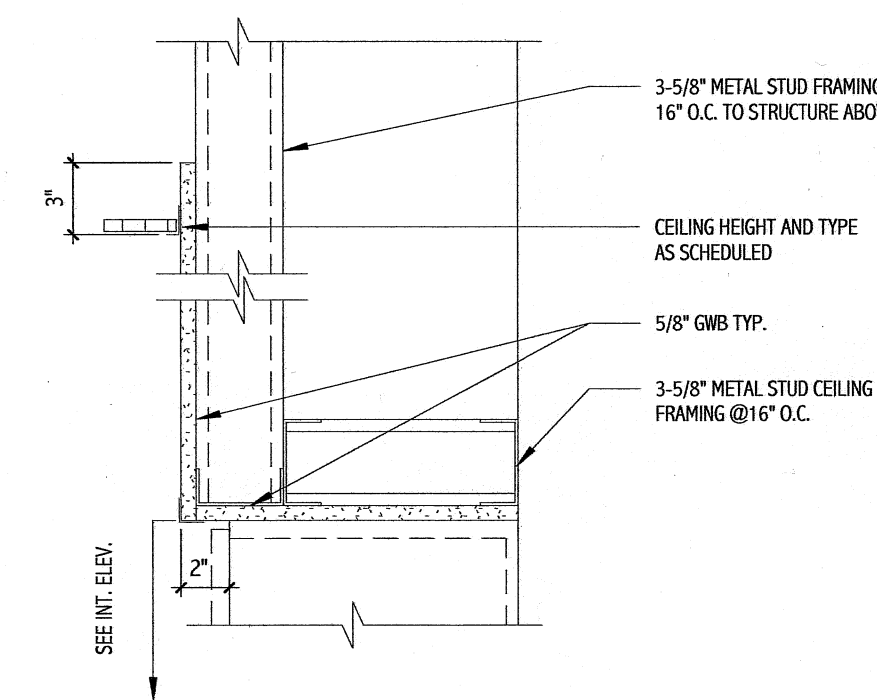
- 2x2 SUSPENDED CEILING PANEL AND GRID ASSEMBLY
- GWB CEILING
- 2x2 LAY-IN LIGHT FIXTURE
- 2x4 LAY-IN LIGHT FIXTURE
- DOWN LIGHT
- CEILING MOUNTED EXIT LIGHT
- RETURN AIR GRILLE
- SUPPLY AIR GRILLE
- EXHAUST AIR GRILLE
- CUBICLE CURTAIN AND TRACK

1 BASEMENT LAYOUT PLAN
1/8" = 1'-0"

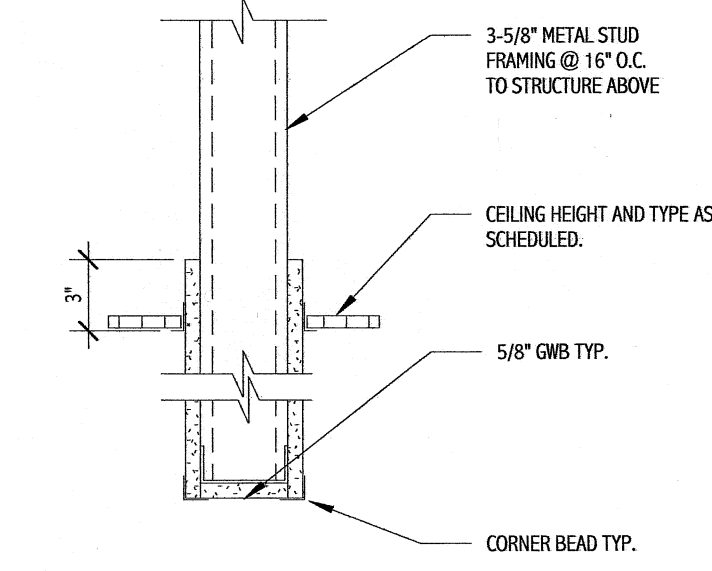
2 BASEMENT REFLECTED CEILING PLAN
1/8" = 1'-0"



3 SOFFIT DETAIL
1 1/2" = 1'-0"



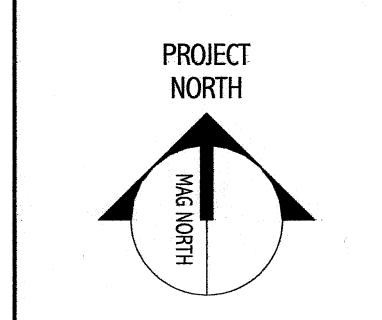
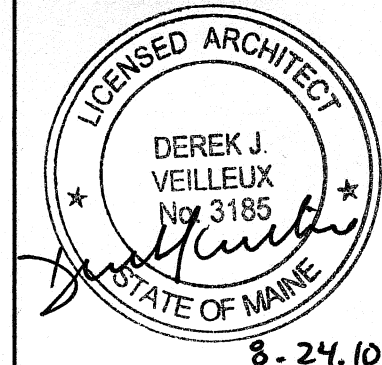
4 SOFFIT DETAIL
1 1/2" = 1'-0"



5 SOFFIT DETAIL
1 1/2" = 1'-0"

144 Fox Street, Box 618
Portland, Maine 04104
Tel: (207) 772-3846
Fax: (207) 772-1070
www.smmr.com

ARCHITECTURE
ENGINEERING
PLANNING
INTERIOR DESIGN
COMMISSIONING



Bramhall Radiology
ANGIO RENOVATIONS
PORTLAND, ME
ISSUED FOR CONSTRUCTION
8.24.10
CURRENT SCALE STATE:

NO.	DATE	DESCRIPTION	BY
0		ISSUED FOR CONSTRUCTION	

GRAPHIC SCALE:
0' 1'

SCALE: As indicated
PROJECT MANAGER: DIV
DRAWN BY: ART
A/E OF RECORD: DIV
PROJECT NO.: 09022-01
DATE: 8.24.10
SHEET TITLE:
LAYOUT PLAN,
REFLECTED CEILING
PLAN & DETAILS

SHEET No. A-102
© COPYRIGHT 2008 SMMR INC.