

LIFE SAFETY NOTES:
 1. EGRESS LIGHTING SHALL BE PROVIDED IN ALL CORRIDORS AND PASSAGeways LEADING TO EXITS. A MINIMUM AVERAGE OF 1 FOOT-CANDLE IS TO BE PROVIDED. THE SOURCE OF ILLUMINATION SHALL BE PROVIDED FOR 90 MINUTES AND CAN BE ANY OF THE FOLLOWING:
 A) GENERATOR BACKED-UP LIGHT FIXTURES.
 B) BATTERY BALLAST LIGHT FIXTURES.
 C) INDIVIDUAL BATTERY UNIT WITH UNIT MONITOR OR REMOTE LAMPS.

LIFE SAFETY SYMBOLS:

- EXIT SIGN, ARROWS INDICATE EGRESS DIRECTION, SHADING INDICATES SIGN FACE.
- FIRE ALARM AUDIBLE/VISUAL NOTIFICATION APPLIANCE. NUMBER IN PARENTHESES INDICATES ILLUMINATION IN CANDELA.
- FIRE ALARM VISIBLE-ONLY NOTIFICATION APPLIANCE.
- EMERGENCY LIGHTING
- PULL STATION
- FIRE EXTINGUISHER CABINET w/ HOSE
- FIRE EXTINGUISHER
- EGRESS
- EGRESS HANDICAP
- EGRESS PATH
- SMOKE PARTITION
 - 1 HR
 - 2 HR

2 BASEMENT DEMOLITION PLAN
 1/8" = 1'-0"

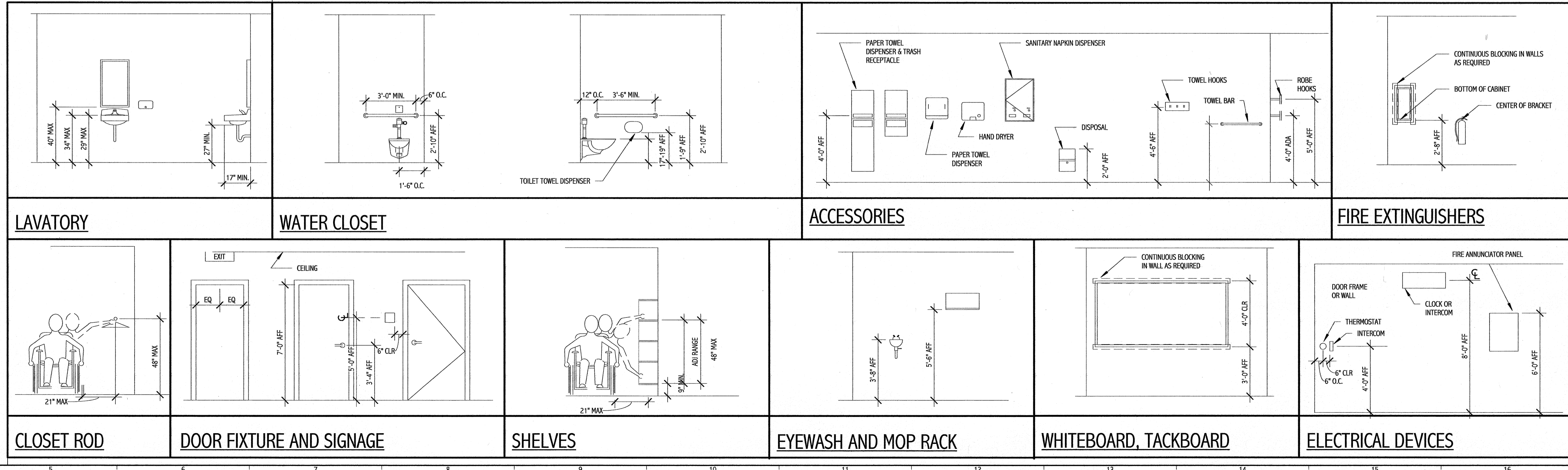
1 LIFE SAFETY PLAN/CODE PLAN
 1/8" = 1'-0"

DEMOLITION PLAN KEY NOTES:

- 1 REMOVE DOOR, FRAME AND HARDWARE. COORDINATE WITH OWNER THOSE ITEMS TO BE SALVAGED PRIOR TO REMOVAL.
- 2 REMOVE WALL OR PORTION OF WALL INDICATED BY DASHED LINE. PRIOR TO REMOVAL, IDENTIFY IF WALL IS LOAD BEARING. IF FOUND TO BE A BEARING WALL NOTIFY ARCHITECT IMMEDIATELY.
- 3 REMOVE FINISH FLOOR MATERIAL (IF ANY) AND BASE. PREPARE SURFACE FOR NEW FINISHES AS REQUIRED BY SCHEDULE AND SPECIFICATIONS.
- 4 REMOVE CEILING SYSTEM COMPLETE. I.E. FRAMING MEMBERS, TRACKS, WIRES, LIGHTING, ETC. COORDINATE EXTENTS WITH SCOPE OF NEW WORK.
- 5 REMOVE CASEWORK AND COUNTER TOP. COORDINATE WITH OWNER THOSE ITEMS TO BE SALVAGED PRIOR TO REMOVAL.
- 6 REMOVE PLUMBING FIXTURE. CAP OFF EXISTING PLUMBING PIPING AT WALL/FLOOR.
- 7 REMOVE PORTION OF FLOOR/SLAB FOR ELECTRICAL TRENCH/CONDUIT. SEE ELECTRICAL AND VENDOR DRAWINGS FOR LOCATIONS.

GENERAL DEMOLITION NOTES:

1. COORDINATE EXTENT OF DEMOLITION WITH LOCATIONS OF PARTITIONS DESCRIBED ON PLANS AND WITH LOCATIONS OF FINISHES NOTED AS EXISTING TO REMAIN.
2. ANY WALL, PARTITION, OR SURFACE DISTURBED BECAUSE OF NEW WORK OR DEMOLITION SHALL BE PATCHED AND FINISHED CONTINUOUSLY TO THE NEAREST CORNER UNLESS NOTED OTHERWISE. MATCH EXISTING ADJACENT CONSTRUCTION FINISHES, CONTINUITY, AND FIRE RATINGS UNLESS NOTED OTHERWISE.
3. PROTECT ALL FINISHES, MATERIALS AND EQUIPMENT NOTED AS EXISTING TO REMAIN. CONTRACTOR SHALL BE RESPONSIBLE TO REPLACE ALL FINISHES, MATERIALS, AND EQUIPMENT DAMAGED DURING CONSTRUCTION.
4. DIMENSIONS INDICATED +/- ARE EXISTING CONDITION DIMENSIONS TO BE VERIFIED IN FIELD.
5. CONTRACTOR TO HOLD PRE-DEMOLITION MEETING WITH OWNER, CONSTRUCTION MANAGER, SUB-CONTRACTORS, ETC. PRIOR TO BEGINNING DEMOLITION WORK TO REVIEW HOSPITALS POLICIES, NOISE CONTROL MEASURES, ETC.
6. CLEARLY IDENTIFY AND TAG MECHANICAL, PLUMBING, AND ELECTRICAL FIXTURES OR EQUIPMENT THAT ARE STILL IN USE PRIOR TO DEMOLITION TO AVOID ACCIDENTAL REMOVAL.
7. WALLS INDICATED WITH A DASHED LINE ARE TO BE REMOVED COMPLETE. IF WALL IS BEARING PRIOR TO REMOVAL, IF SO, CONTACT ARCHITECT/ENGINEER IMMEDIATELY.
8. SEE M.E.P. DRAWINGS FOR THE SCOPE OF DEMOLITION IN THOSE DISCIPLINES.



147 Foss Street, P.O. Box 618
 Portland, Maine 04104
 Tel: (207) 772-8646
 Fax: (207) 772-1070
 www.smrt.com

ARCHITECTURE
 ENGINEERING
 PLANNING
 INTERIOR DESIGN
 COMMISSIONING

SMRT

REGISTERED ARCHITECT
 DEREK J. VEILLEUX
 No. 1185
 STATE OF MAINE
 8.24.10

PROJECT NORTH

BRAMHALL RADIOLOGY
 ANGIO RENOVATIONS
 PORTLAND, ME

ISSUED FOR CONSTRUCTION 8.24.10

NO.	DESCRIPTION	DATE
0	ISSUED FOR CONSTRUCTION	8.24.10
1	REV	

GRAPHIC SCALE:
 0" 1"

SCALE: As Indicated
 PROJECT MANAGER: DIV
 ARCHITECT: ART
 A/E OF RECORD: DIV
 PROJECT NO.: 09022-01
 DATE: 8.24.10

SHEET TITLE:
 BASEMENT LIFE SAFETY PLAN & DEMOLITION PLANS

SHEET No. A-001