

ABBREVIATIONS:

AB	ANCHOR BOLT	L	ANGLE / LENGTH
ACC	AIR CONDITIONING	LF	LEFT
ACCU	AIR CONDITIONING CONDENSER UNIT	LINO	SHEET LINE/UM
ACPLAS	ACoustical PLASTER	LL	LINE LOAD
ACT	ACOUSTIC CEILING TILE	LH	LONG LEG HORIZONTAL
AFF	ABOVE FINISH FLOOR	LLV	LONG LEG VERTICAL
AGG	AGGREGATE	LP	LIGHTING PANEL / LIQUIFIED PROPANE
ALT	ALTERNATE		
AP	ACCESS PANEL	MAX	MAXIMUM
APPROX	APPROXIMATE	MB	MARKER BOARD
ARCH	ARCHITECTURAL	MD	MEDIUM DENSITY OVERLAY
		MCH	MECHANICAL
BOX	BOTTOM CORD EXTENSION	MFR	MECHANICAL MANUFACTURER
BD	BOARD	MIN	MINIMUM
BIT	BITUMINOUS	MISC	MISCELLANEOUS
BLDG	BUILDING	NO	NO
BLP	BORROWED LIGHT PANEL	MR	MASONRY OPENING
BO	BOTTOM OF	MUA	MOISTURE-RESISTANT MAKE-UP AIR
BOF	BOTTOM OF FOOTING		
BOS	BOTTOM OF STEEL	N	NO
BOT	BOTTOM	NB	NEW CATCH BASIN
BRDG	BRIDGING	NM	NEW DRAIN MANHOLE
BRG	BEARING	NEM	NEW FORCE MAIN
BS	BOTH SIDES	NC	NOT IN CONTRACT
BSE	BRICK SHELF ELEVATION	NS	NEAR SIDE
		NSD	NEW STORM DRAIN LINE
C	CHANNEL	NSS	NEW SANITARY SEWER LINE
CB	CATCH BASIN / CHALKBOARD	NTS	NOT TO SCALE
CB	CEMENTITIOUS BACKER BOARD	NW	NEW WATER LINE
CFM	CUBIC FEET PER MINUTE		
CP	CAST IN PLACE	OC	ON CENTER
CPT	CONTROL JOINT / CONSTRUCTION JOINT	OF	OUTSIDE FACE
CL	CENTER LINE	OH	OVERHEAD
CLL	CONTRACT LIMIT LINE		
CLR	CLEAR	PA	PUBLIC ADDRESS
CMU	CONCRETE MASONRY UNIT	PAF	POWER ACTUATED FASTENER
COL	COLUMN	POU	POOL DEHUMIDIFICATION UNIT
CONC	CONCRETE	PL	PLATE / PROPERTY LINE
CONT	CONTIGUOUS	PLM	PLUMBING MANHOLE
CT	CERAMIC TILE	PLF	POUNDS PER LINEAR FOOT
CUH	CABINET UNIT HEATER	PP	POWER PANEL
		PPF	POUNDS PER SQUARE FOOT
D	DIAMETER	PS	POUNDS PER SQUARE INCH
DBL	DOUBLE	PT	PRESSURE-TREATED
DF	DRINKING FOUNTAIN	PVC	POLYVINYL CHLORIDE
DL	DEAD LOAD	PWMT	PAVEMENT
DLR	DISPLAY RAIL		
DTL	DETAIL	R	RISER / RADUS
DW	DRAWING	RD	RESILIENT BASE
DWG	DRAWING	RO	ROOF DRAIN
		ROF	ROUGH OPENING
EA	EACH	RTQ	RIGHT OF WAY
EF	EXHAUST FAN / EACH FACE	RUB	RUBERAL
EJ	EXPANSION JOINT	RTU	ROOF TOP UNIT (HVAC)
EL	ELEVATION	SACT	SUSPENDED ACOUSTIC TILE CEILING
ELEC	ELECTRICAL	SC	SOLID CORE
EOP	EDGE OF PAVEMENT	SCF	SQUARE FOOT / SUPPLY FAN
EPDM	ETHYLENE PROPYLENE DIENE MONOMER	SFM	SPRAYED FIRE-RESISTIVE MATERIAL
EQ	EQUAL	SHT	SHEET
EW	EACH WAY	SIM	SIMILAR
EW	ELECTRIC WATER COOLER	SK	SHEAR KEY
EXST	EXISTING	SN	SANITARY NAPKIN (DISPENSER)
EXP	EXPANSION	SP	SPECIAL
EXT	EXTERIOR	SS	STAINLESS STEEL
		STA	STATION
FB	FLAT BAR	STL	STEEL
FBO	FURNISHED BY OTHERS	STRUC	STRUCTURAL
FCO	FLOOR CLEAR-OUT		
FD	FLOOR DRAIN	T	TREAD
FE	FIRE EXTINGUISHER	TB	TACKBOARD
FEC	FIRE EXTINGUISHER CABINET	T&B	TOP AND BOTTOM
FF	FINISH FLOOR / FAN FACE	TEB	TEMPORARY BENCHMARK
FFE	FINISH FLOOR ELEVATION	TE	TOP OF
FO	FINISH FLOOR FINISH	TEC	TOP OF CONCRETE
FPP	FIBER REINFORCED PLASTIC	TF	TOP OF FOOTING
FS	FAR SIDE	TOM	TOP OF MASONRY
FTG	FOOTING	TOP	TOP OF PIER
		TOS	TOP OF STEEL
GA	GALVEZ	TOW	TOP OF WALL
GALV	GALVANIZED	TP	TOILET PAPER (DISPENSER) / TEST PIT
GB	GRAB BAR	TS	TUBE STEEL
GC	GENERAL CONTRACTOR	TYP	TYPICAL
GDT	GYP-SUM DROPS-IN TILE		
GV	GRAVITY VENT	UH	UNIT HEATER
GWB	GYP-SUM WALL BOARD	UND	UNLESS NOTED OTHERWISE
		V	VENT PIPE / VERTICAL
H	HORIZONTAL	VB	VAPOR BARRIER
HC	HANDICAPPED / HOLLOW CORE	VCT	VINYL COMPOSITION TILE
HORIZ	HORIZONTAL	VERT	VERTICAL
HM	HOLLOW METAL	VTR	VENT THROUGH THE ROOF
HRI	HEAT RECOVERY UNIT	W	WITH
HVV	HEATING AND VENTILATING	WC	WATER CLOSET
HVAC	HEATING, VENTILATING AND AIR CONDITIONING	WF	WIDE FLANGE
		WH	WATER HEATER
I	INCLUDED ANGLE	WO	WITH OUT
ID	INSIDE DIAMETER	WP	WORKING POINT
IF	INSIDE FACE	WS	WEB STIFFENER
II	ISOLATION JOINT	WWF	WELDED WIRE FABRIC
IMP	IMPACT RESISTANT		
INS	INSULATED		
INV	INVERT		
IS	JOINT SUBSTITUTE		
K	KFPS		

SYMBOL LEGEND:

	BUILDING SECTION
	WALL SECTION
	DETAIL
	EXTERIOR ELEVATION
	INTERIOR ELEVATION
	LEVEL LINE
	KEY NOTE
	EQUIPMENT ACCESSORY TAG
	WINDOW TAG
	PARTITION TAG
	DOOR TAG
Room name	ROOM NAME ROOM NUMBER
	COLUMN BUBBLE & CENTERLINE
	BACKER ROD & SEALANT
View Name	1/8" = 1'-0"

APPLICABLE CODES:

- GENERAL:**
- INTERNATIONAL BUILDING CODE (IBC); 2009 EDITION
 - NATIONAL FIRE PROTECTION ASSOCIATION (NFPA 101); 2010 EDITION
 - ACCESSIBILITY GUIDELINES FOR BUILDINGS AND FACILITIES (ADA); 1994 EDITION
 - AIA GUIDELINES FOR DESIGN AND CONSTRUCTION OF HOSPITAL AND HEALTHCARE FACILITIES; 2010 EDITION
- PLUMBING:**
- NFPA 13: INSTALLATION OF SPRINKLER SYSTEMS; 2002
 - STATE OF MAINE INTERNAL PLUMBING CODE; 2005
- HVAC:**
- MECHANICAL CODE: INTERNATIONAL MECHANICAL CODE; 2003 EDITION
 - NFPA 99 HEALTHCARE FACILITIES; 2002 EDITION
 - ENERGY CODE: ASHRAE 90.1; 2001 EDITION WITH AMENDMENTS
 - ASHRAE 62; 2001 EDITION
 - FIRE AND SMOKE DAMPER INSTALLATION: NFPA 90A AND NFPA 10; 2003 EDITION
 - DUCT MOUNTED SMOKE DETECTORS: NFPA 72 EDITION
- ELECTRICAL:**
- NFPA 70; 2005 EDITION
 - NFPA 72; 2003 EDITION
 - IESNA LIGHTING HANDBOOK REFERENCE AND APPLICATION, 9th EDITION

GENERAL NOTES:

- FIELD VERIFY ALL DIMENSIONS AND LAYOUT PRIOR TO PROCEEDING WITH WORK. NOTIFY ARCHITECT IN WRITING OF ANY DISCREPANCIES OR INCONSISTENCIES. FAILURE TO REPORT ANY DISCREPANCIES WITHIN THESE CONSTRUCTION DOCUMENTS TO THE ARCHITECT WILL NOT BE GROUNDS FOR ADDITIONAL COST OR CHANGE ORDERS.
- THE CONTRACTOR SHALL BE RESPONSIBLE FOR PROVIDING ALL MATERIALS (UNLESS NOTED OTHERWISE), AND WORKMANSHIP IN ACCORDANCE WITH FEDERAL, STATE, CITY, AND LOCAL BUILDING CODES AND THEIR REQUIREMENTS.
- CONTRACTOR TO CONFIRM EXISTING WALL RATINGS.
- THE CONTRACTOR AND ALL TRADES SHALL NOTE REQUIREMENTS OF "GENERAL NOTES" ON ALL SHEETS.
- EACH TRADE TO PROVIDE SMOKE OR FIRE SEALANT AT PENETRATIONS AS REQUIRED FOR WALL TYPE. ALL SEALANT, FIRE STOPPING, AND SMOKE STOPPING ASSEMBLIES SHALL BE U.L. RATED.
- DIMENSIONS ARE FACE OF CONCRETE, FACE OF MASONRY, FACE OF EXISTING PARTITION AND CENTERLINE OF STUD PARTITIONS, UNLESS INDICATED OTHERWISE.
- REFER TO ALL CONSTRUCTION DOCUMENTS FOR REQUIREMENTS WHICH MAY AFFECT THE WORK IN ANOTHER DISCIPLINE AND COORDINATE WORK.
- REFER TO DETAILS FOR ADDITIONAL DIMENSIONAL INFORMATION.
- DOOR JAMBS SHALL BE LOCATED 6" FROM CORNER IN STUD PARTITIONS AND 8" FROM CORNER IN MASONRY PARTITIONS UNLESS INDICATED OTHERWISE.
- PROVIDE BLOCKING IN WALLS AS NECESSARY WHERE CASEWORK, SHELVES, HANDRAILS, AND MISC. EQUIPMENT ARE LOCATED.
- PATCH ALL HOLES, WALLS AND CRACKS IN ROOMS TO RECEIVE NEW PAINT.
- ANY EXISTING WALLS THAT ARE FOUND TO BE UNBRACED OR DO NOT EXTEND TO BOTTOM OF DECK/SLAB SHOULD BE BRACED BACK TO STRUCTURE. WHEN PRIVACY IS AN ISSUE EXTEND WALL TO BOTTOM OF DECK/SLAB.
- DO NOT SCALE DRAWINGS.
- "PROVIDE" MEANS "FURNISH AND INSTALL."



MAINE MEDICAL CENTER

BRAMHALL CAMPUS: PORTLAND, MAINE
ANGIO RENOVATIONS

1447 Fore Street, P.O. Box 8
Portland, Maine 04104
Tel: (207) 775-3886
Fax: (207) 772-1070
www.mcmcc.com

Sheet Number	Sheet Name	Issue Status	Issue Date
G-001	GENERAL INFORMATION	IFC	8.24.10
A-001	BASEMENT LIFE SAFETY PLAN & DEMOLITION PLANS	IFC	8.24.10
A-002	PHASING PLANS	IFC	8.24.10
A-100	BASEMENT FLOOR PLAN	IFC	8.24.10
A-102	LAYOUT PLAN, REFLECTED CEILING PLAN & DETAILS	IFC	8.24.10
A-201	INTERIOR ELEVATIONS	IFC	8.24.10
A-500	DETAILS	IFC	8.24.10
A-600	INTERIOR FINISHES, SCHEDULES & DETAILS	IFC	8.24.10
A-601	DOOR SCHEDULE & DETAILS	IFC	8.24.10

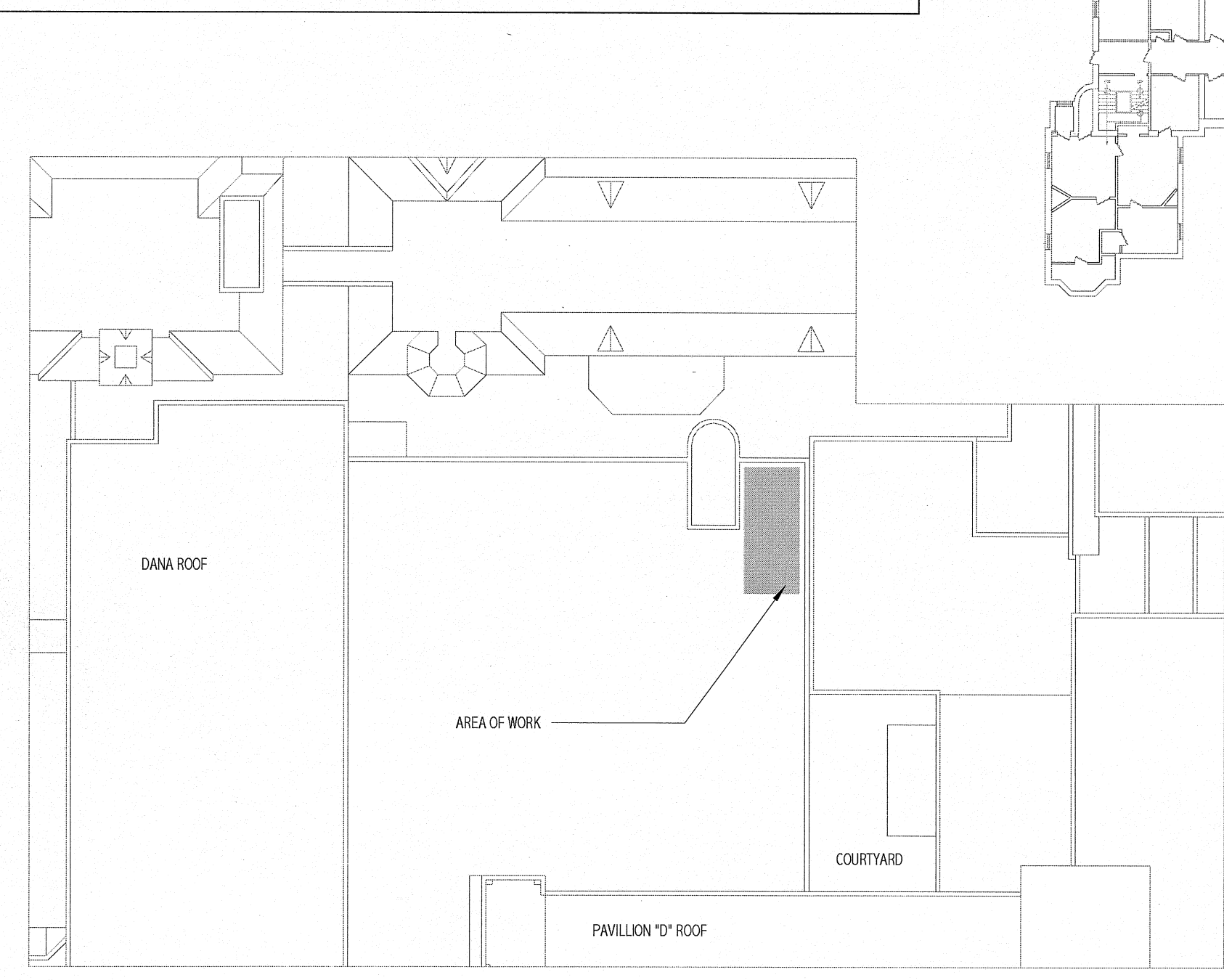
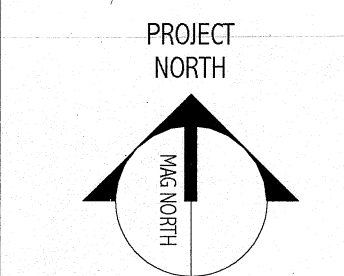
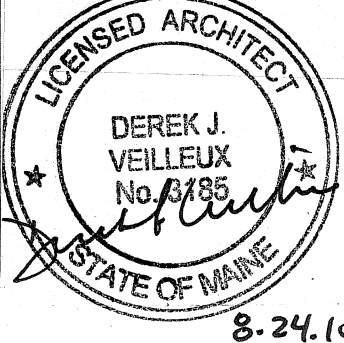
Sheet Number	Sheet Name	Issue Status	Issue Date
SF-101	ANGIO FOUNDATION AND FRAMING PLANS	IFC	8.24.10
SF-501	STRUCTURAL DETAILS	IFC	8.24.10

Sheet Number	Sheet Name	Issue Status	Issue Date
M-001	MECHANICAL LEGEND AND ABBREVIATIONS	IFC	8.24.10
M-002	MECHANICAL LEGEND AND SPECIFICATIONS	IFC	8.24.10
MD101	ANGIO DEMOLITION PLAN	IFC	8.24.10
MH101	ANGIO MECHANICAL DUCTWORK PLAN	IFC	8.24.10
MP101	ANGIO MECHANICAL PIPING PLAN	IFC	8.24.10
MP102	ANGIO MECHANICAL PIPING PLAN ROOF	IFC	8.24.10
M-501	MECHANICAL DETAILS	IFC	8.24.10
M-502	MECHANICAL DETAILS	IFC	8.24.10
M-601	MECHANICAL DETAILS	IFC	8.24.10
M-651	SEQUENCE OF OPERATION	IFC	8.24.10
M-652	SEQUENCE OF OPERATION	IFC	8.24.10

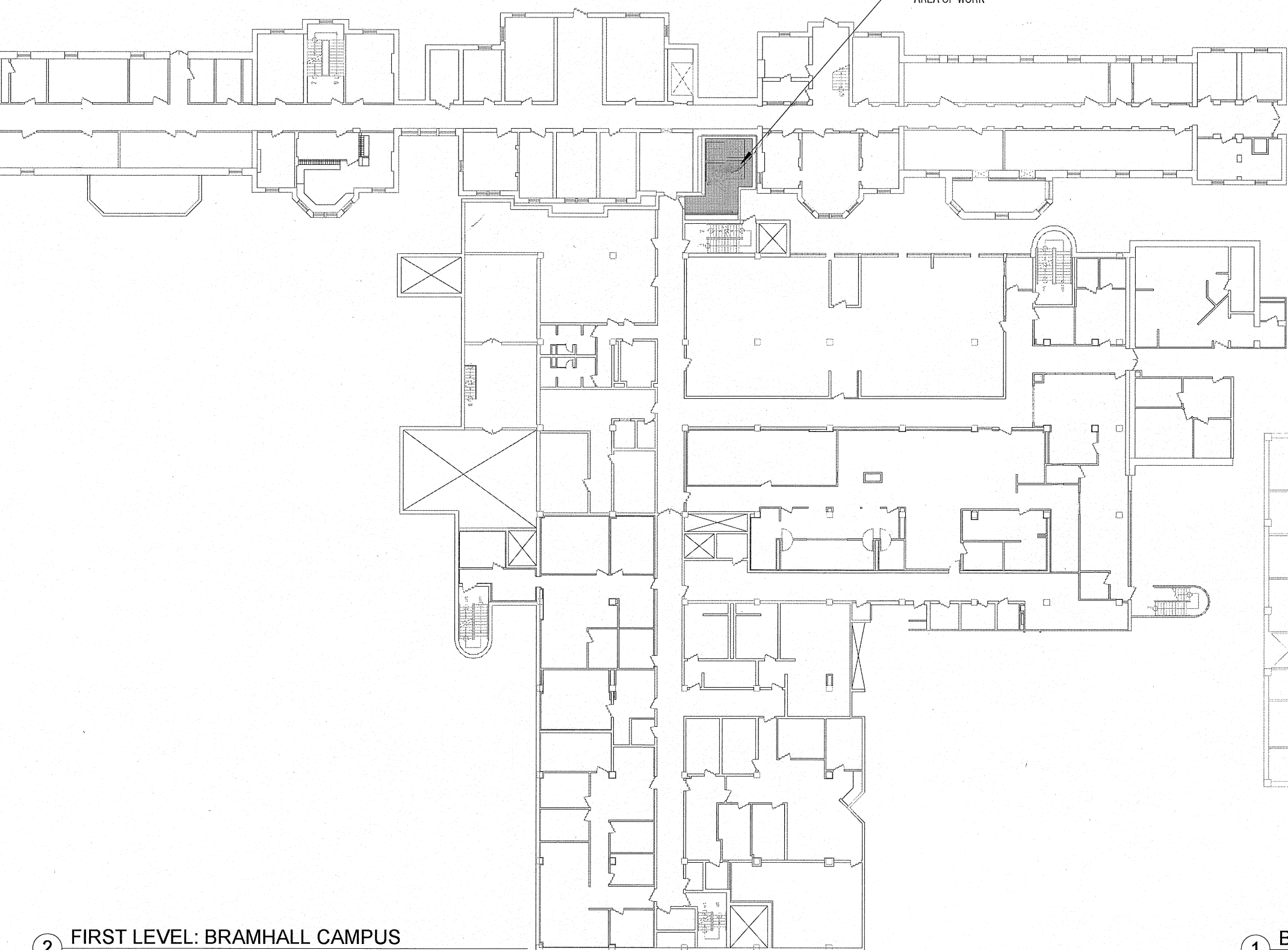
Sheet Number	Sheet Name	Issue Status	Issue Date
PLO01	PLUMBING LEGEND AND ABBREVIATIONS	IFC	8.24.10
PD101	ANGIO PLUMBING DEMOLITION PLAN	IFC	8.24.10
PL101	ANGIO SANITARY PIPING PLAN	IFC	8.24.10
PL102	ANGIO DOMESTIC WATER PIPING PLAN	IFC	8.24.10
PL103	ANGIO MEDICAL GAS PIPING PLAN	IFC	8.24.10
PL501	PLUMBING DETAILS	IFC	8.24.10
PL601	PLUMBING SCHEDULES	IFC	8.24.10

Sheet Number	Sheet Name	Issue Status	Issue Date
E-001	ANGIO LEGEND AND GENERAL NOTES	IFC	8.24.10
E-002	ANGIO SPECIFICATION SHEET 1	IFC	8.24.10
E-003	ANGIO SPECIFICATION SHEET 2	IFC	8.24.10
ED101	ANGIO DEMOLITION PLANS	IFC	8.24.10
EP101	ANGIO POWER FLOOR PLAN	IFC	8.24.10
EP401	ENLARGED FLOOR PLANS SHEET 1	IFC	8.24.10
EP402	ENLARGED POWER PLANS SHEET 2	IFC	8.24.10
EL101	ANGIO BASEMENT LIGHTING PLAN	IFC	8.24.10
EY101	ANGIO BASEMENT SYSTEMS PLAN	IFC	8.24.10
EP601	ONE - LINE DIAGRAM AND PANEL SCHEDULES	IFC	8.24.10
EP602	PANEL SCHEDULES	IFC	8.24.10

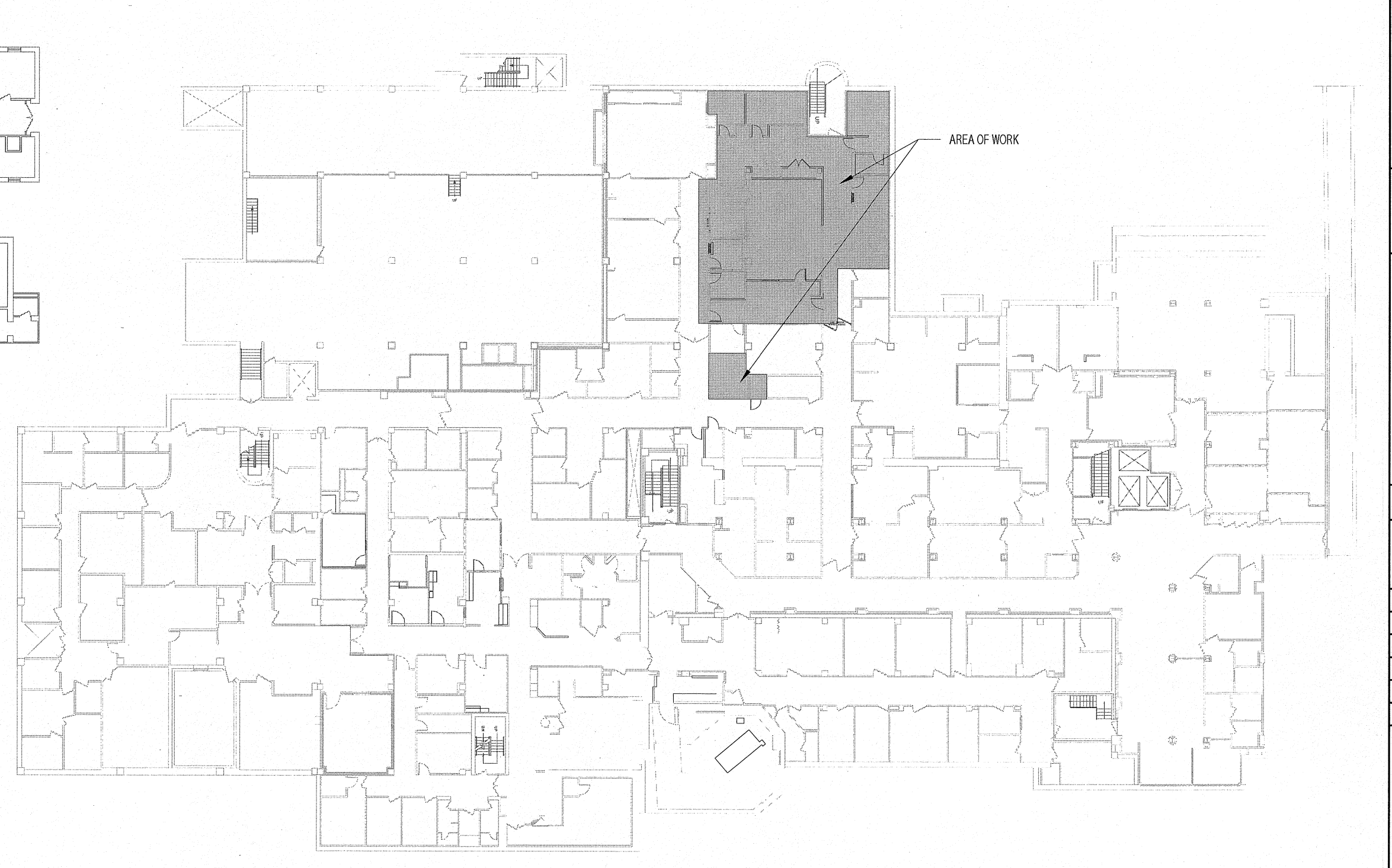
Sheet Number	Sheet Name	Issue Status	Issue Date
Q-001	VENDOR EQUIPMENT DRAWINGS SHEET 1	IFC	8.24.10
Q-002	VENDOR EQUIPMENT DRAWINGS SHEET 2	IFC	8.24.10
Q-003	VENDOR EQUIPMENT DRAWINGS SHEET 3	IFC	8.24.10
Q-004	VENDOR EQUIPMENT DRAWINGS SHEET 4	IFC	8.24.10
Q-005	VENDOR EQUIPMENT DRAWINGS SHEET 5	IFC	8.24.10
Q-006	VENDOR EQUIPMENT DRAWINGS SHEET 6	IFC	8.24.10
Q-007	VENDOR EQUIPMENT DRAWINGS SHEET 7	IFC	8.24.10
Q-008	VENDOR EQUIPMENT DRAWINGS SHEET 8	IFC	8.24.10
Q-009	VENDOR EQUIPMENT DRAWINGS SHEET 9	IFC	8.24.10
Q-010	VENDOR EQUIPMENT DRAWINGS SHEET 10	IFC	8.24.10



3 KEY PLAN - ANGIO - ROOF
1/32" = 1'-0"



2 FIRST LEVEL: BRAMHALL CAMPUS
1/32" = 1'-0"



1 BASEMENT LEVEL: BRAMHALL CAMPUS
1/32" = 1'-0"

Bramhall Radiology
ANGIO RENOVATIONS
PORTLAND, ME

ISSUED FOR CONSTRUCTION 8.24.10

ISSUED FOR CONSTRUCTION 8.24.10

REV	DESCRIPTION	DATE
0		

GRAPHIC SCALE:
0" 1"

SCALE: As indicated

PROJECT MANAGER: DW

CDRAWN BY: ART

AVE OF RECORD: DW

PROJECT NO: 09022-01

DATE: 8.24.10

SHEET TITLE:
GENERAL INFORMATION

SHEET NO:
G-001