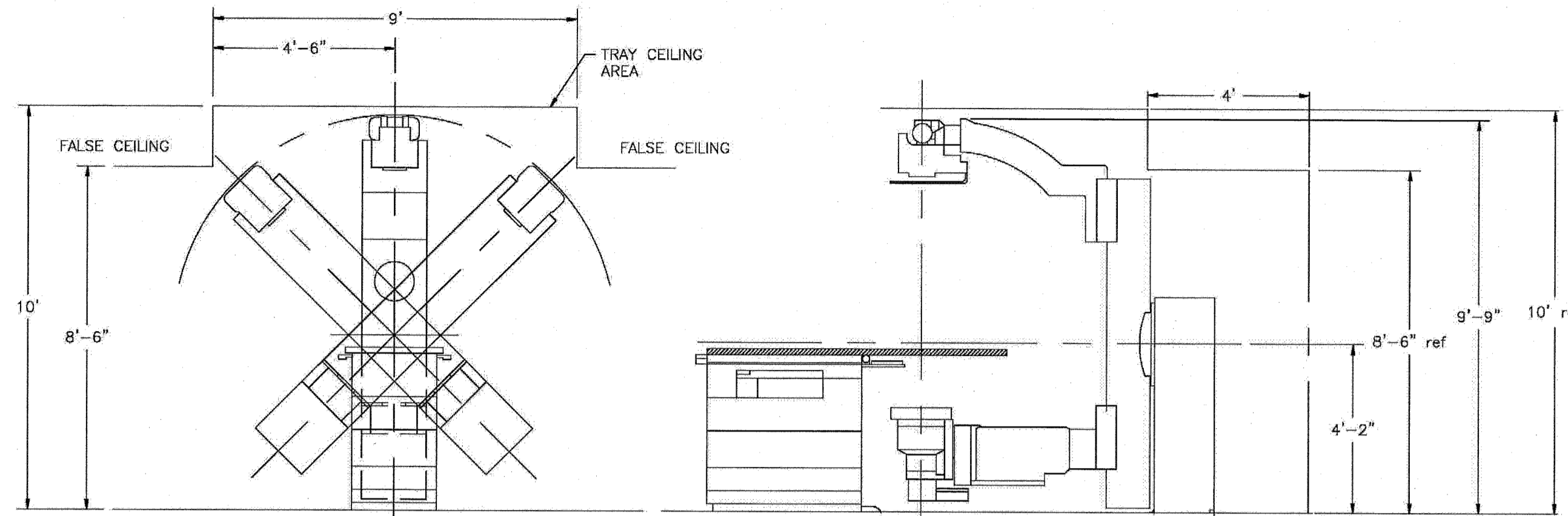
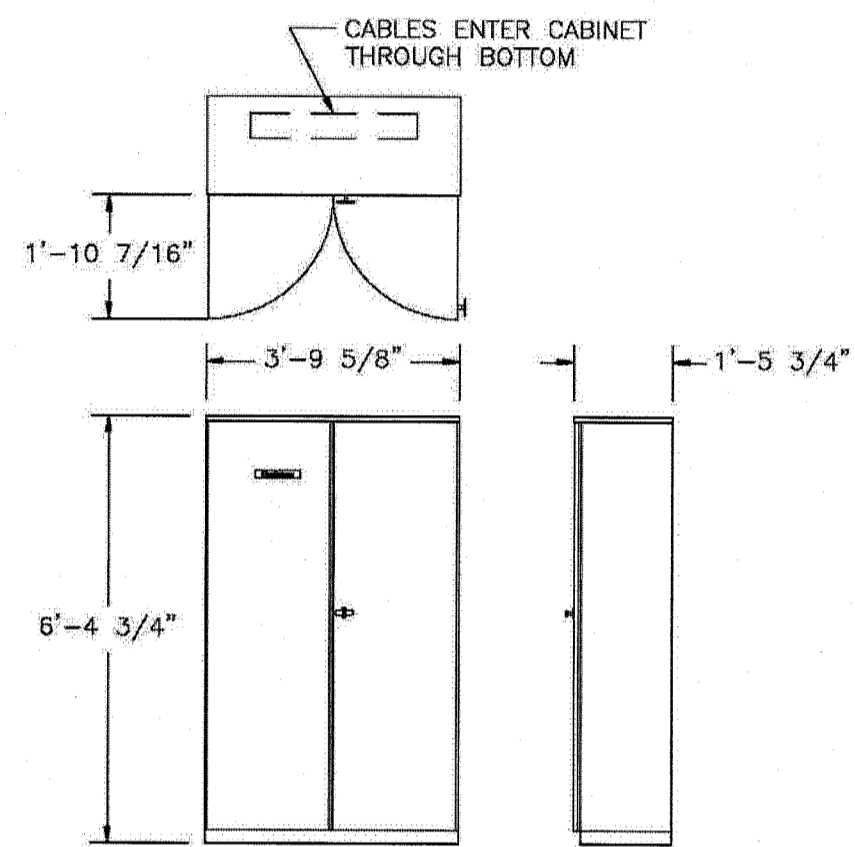


**SIMULATOR CONTROL CONSOLE, MONITOR, KEYBOARD AND PRINTER**

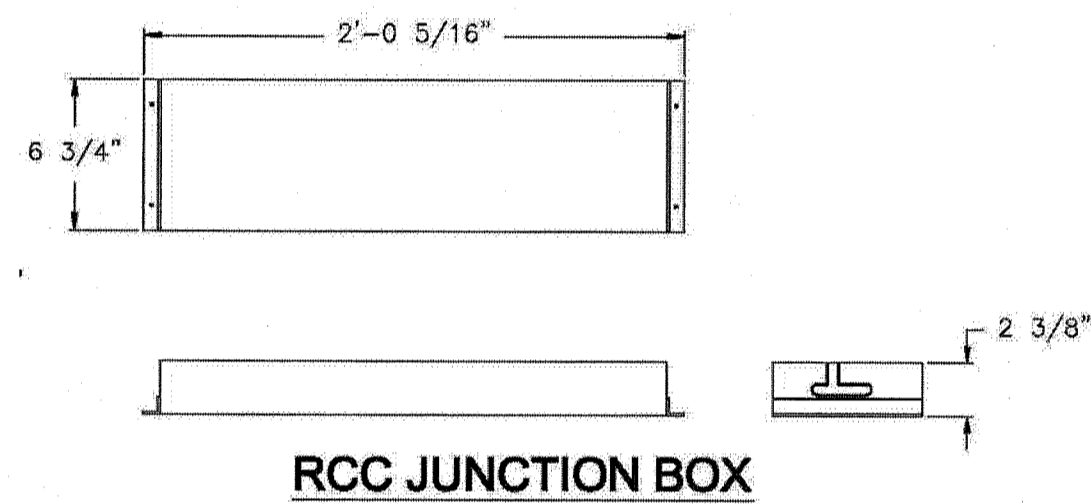


**OPTIONAL TRAY CEILING**

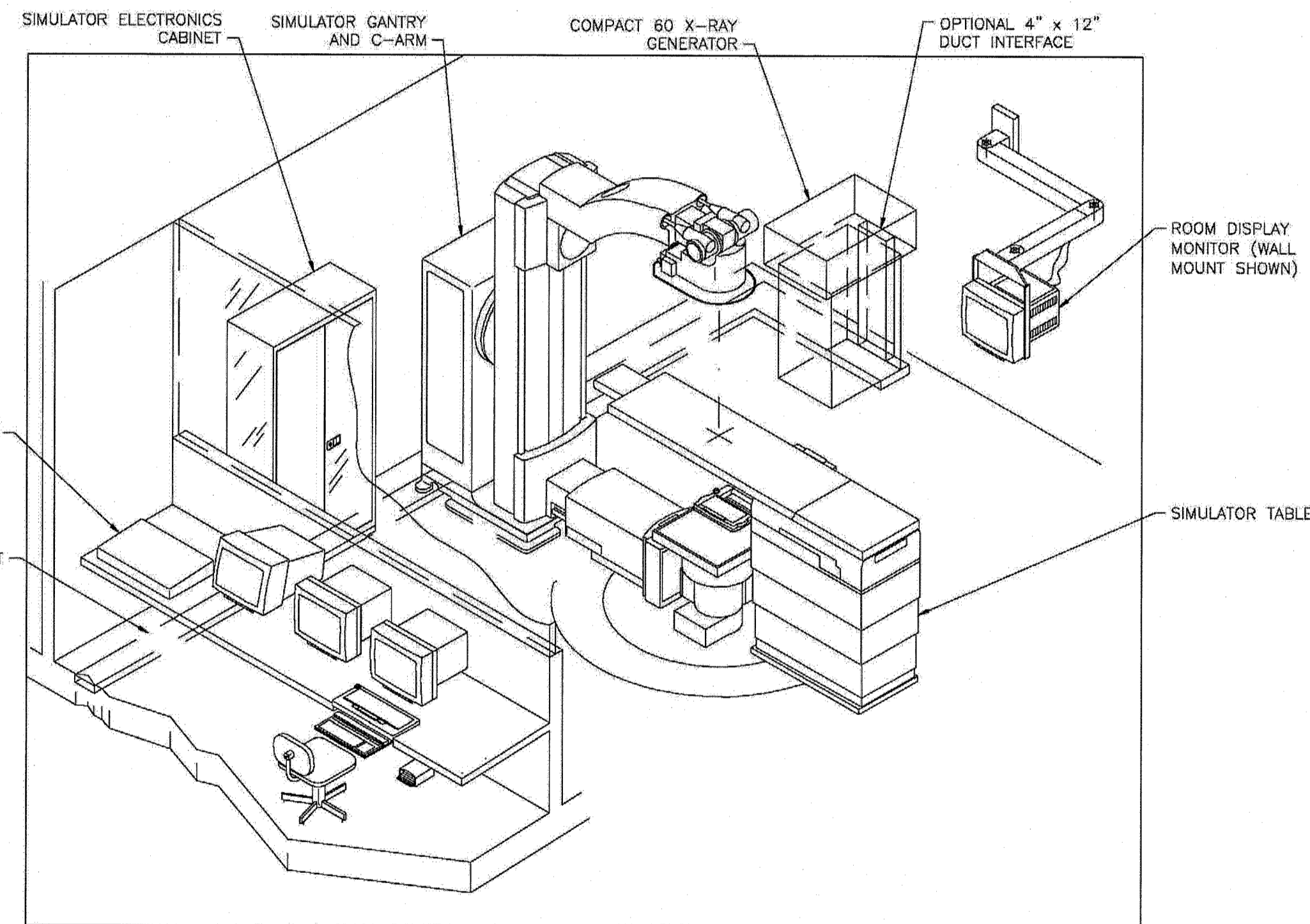
**SIMULATOR GANTRY AND TABLE**



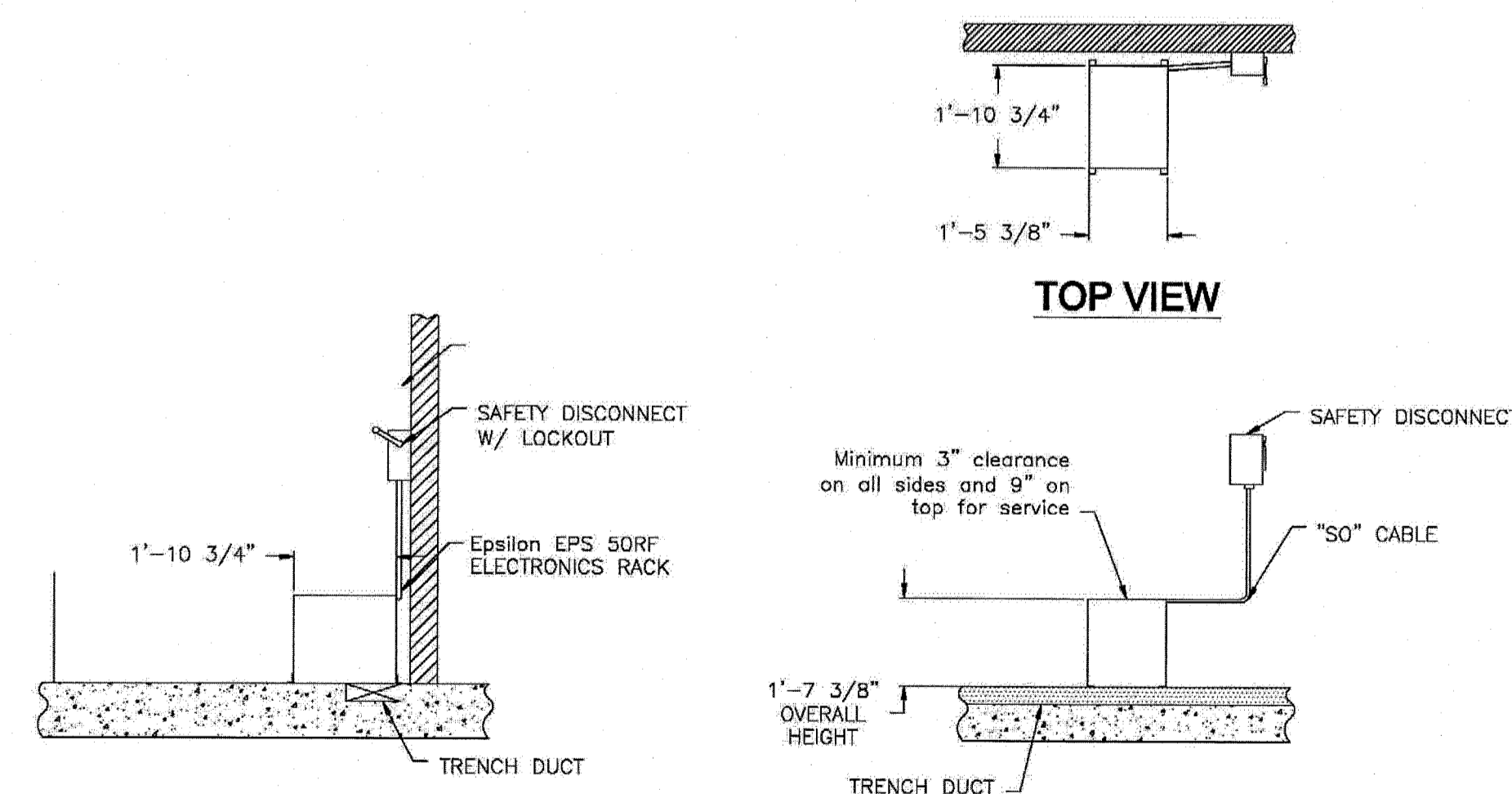
**SIMULATOR ELECTRONICS CABINET**



**RCC JUNCTION BOX**



**TYPICAL LAYOUT OF MAJOR SIMULATOR COMPONENTS**



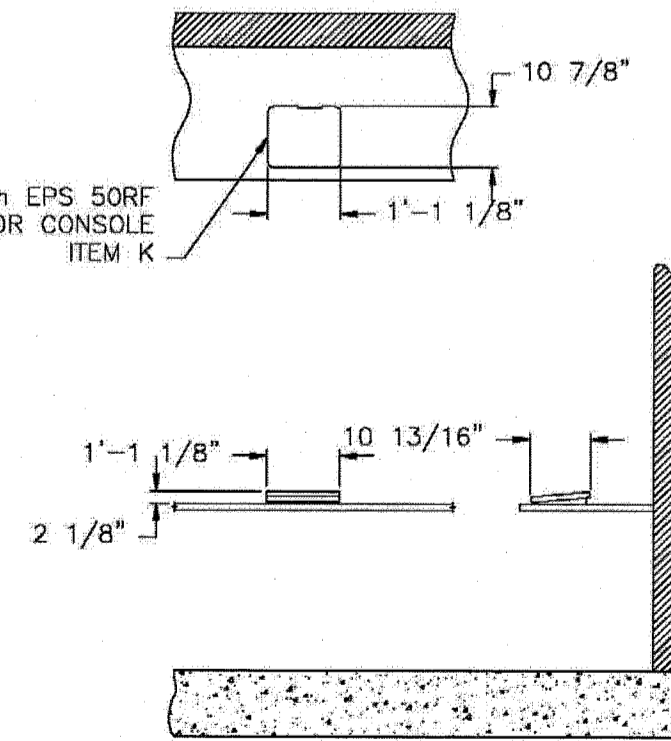
**RIGHT SIDE VIEW**

**ELECTRONICS CABINET AND HIGH VOLTAGE TRANSFORMER**

WEIGHT: 1600 LBS

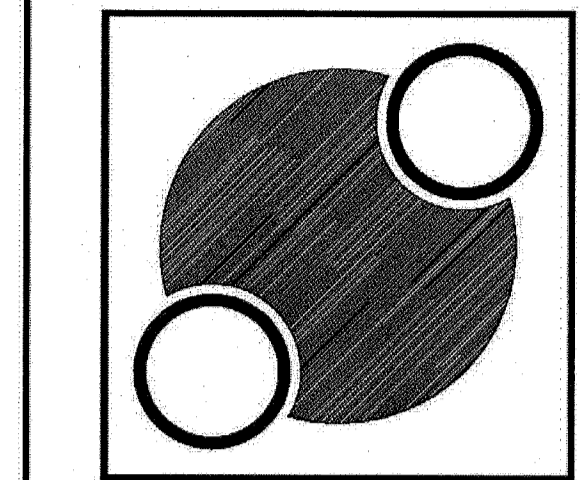
**FRONT VIEW**

**ELECTRONICS CABINET AND HIGH VOLTAGE TRANSFORMER**



**COMPACT 60 OPERATOR'S CONSOLE**

NOTES:  
1--NUCLETRON PROVIDED CABLE HAS A MAXIMUM LENGTH OF 50'-0\"/>



**Nucletron Corporation**

NUCLETRON RETAINS EXCLUSIVE COPYRIGHT TO ALL INFORMATION RELEASED HEREIN. ALL EQUIPMENT AND INFORMATION SHOWN IS CONSIDERED CONFIDENTIAL AND THE EXCLUSIVE PROPERTY OF THE NUCLETRON CORPORATION. DOCUMENTATION WILL NOT BE MODIFIED, DUPLICATED, OR RESOLD TO THIRD PARTY VENDORS, IN PART OR ENTIRETY, WITHOUT EXPRESS PERMISSION OF NUCLETRON.

**NUCLETRON CORPORATION**  
8671 ROBERT FULTON DRIVE  
COLUMBIA, MD 21046-2133

TELEPHONE: (800) 336-2249  
FAX: (410) 312-4196

Project Name and Location

**Maine Medical Center**  
Portland, ME

| NO. | REVISION/ISSUE | DATE |
|-----|----------------|------|
|     |                |      |
|     |                |      |
|     |                |      |
|     |                |      |
|     |                |      |
|     |                |      |

|            |                 |
|------------|-----------------|
| Drawn By   | <b>Pedrosa</b>  |
| Checked By |                 |
| Date       | <b>10/26/09</b> |

|                  |                     |
|------------------|---------------------|
| PROJECT NUMBER   | <b>NUC2009-CP05</b> |
| QUOTATION NUMBER | <b>A09030401R</b>   |
| QUOTATION DATE   | <b>10/22/09</b>     |

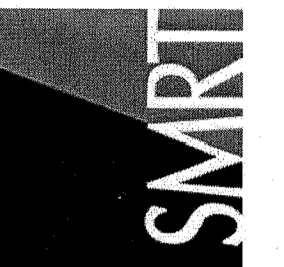
|                    |  |
|--------------------|--|
| CUSTOMER APPROVAL  |  |
| NUCLETRON APPROVAL |  |
| DATE               |  |

|         |            |                   |            |
|---------|------------|-------------------|------------|
| Project | MMC        | Sheet             | <b>N-8</b> |
| Date    | 10/26/09   | Equipment Details |            |
| Scale   | 1/4"=1'-0" | 8 of 8            |            |

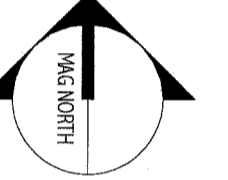
PROJECT: NUC2009-CP05

144 Fox Street, P.O. Box 618  
Portland, Maine 04104  
Tel: (807) 772-3846  
Fax: (807) 772-1070  
www.nucletron.com

ARCHITECTURE  
ENGINEERING  
PLANNING  
INTERIOR DESIGN  
COMMISSIONING



PROJECT NORTH



CT SIMULATOR REPLACEMENT

PORTLAND, ME

RE-ISSUED FOR CONSTRUCTION

02.09.10

CURRENT ISSUE STATUS:

| NO. | DESCRIPTION | DATE |
|-----|-------------|------|
|     |             |      |
|     |             |      |
|     |             |      |
|     |             |      |

GRAPHIC SCALE:  
0' 1'

SCALE:  
PROJECT MANAGER: DIV  
DRAWN BY:  
A/E OF RECORD: DIV  
PROJECT NO.: 09122  
DATE: 02.09.10

SHEET TITLE:  
EQUIPMENT DETAILS

SHEET No.  
Q-010