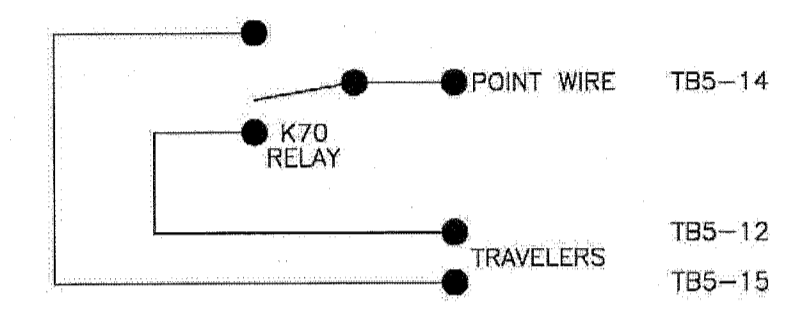
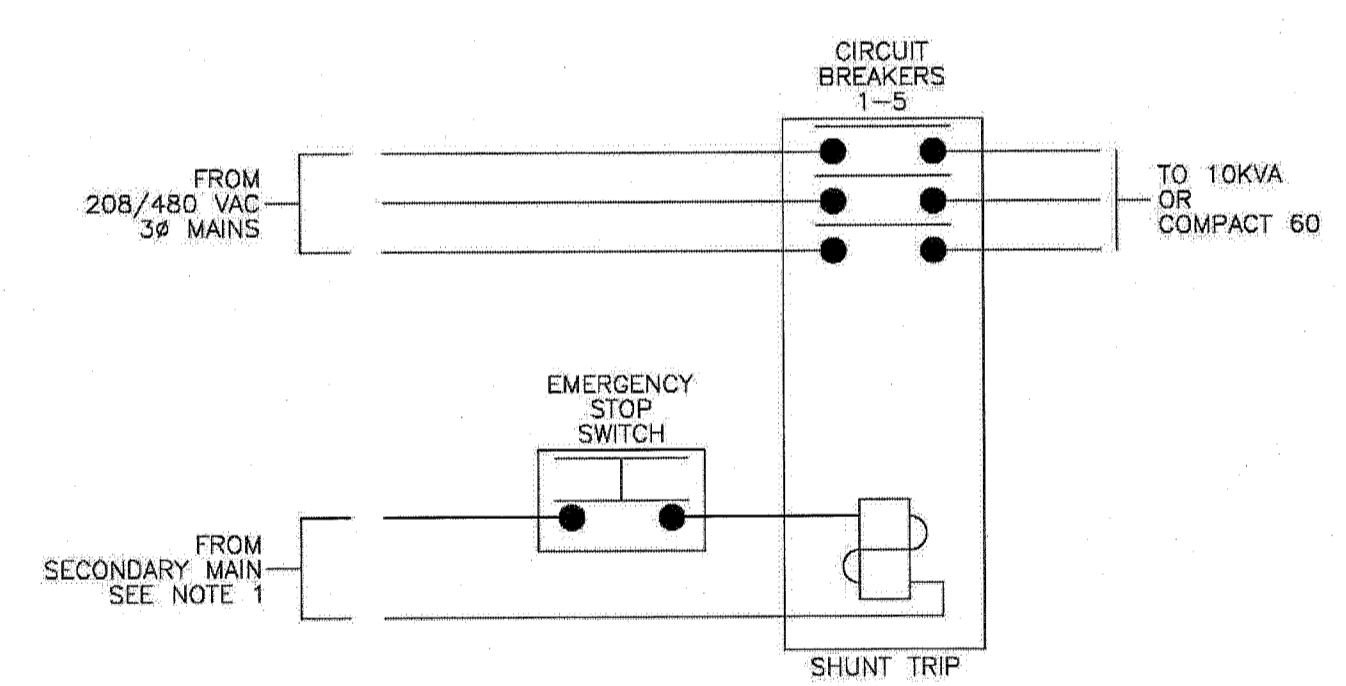


TRANSFORMER SIDE	HO	N	SUPPLY AND LOAD SIDE
○	HO	○	N
○	208	○	○
○	220	○	○
○	240	○	○
○	277	○	○
○	400	○	OUT
○	420	○	○
○	440	○	○
○	480	○	○
○	208	○	○
○	220	○	○
○	240	○	○
○	277	○	OUT
○	400	○	○
○	420	○	○
○	440	○	○
○	480	○	○
○	208	○	○
○	220	○	○
○	240	○	○
○	277	○	OUT
○	400	○	○
○	420	○	○
○	440	○	○
○	480	○	○

10 KVA TRANSFORMER WIRING & TERMINATIONS DETAIL
SEE NOTES 2, 3, & 4

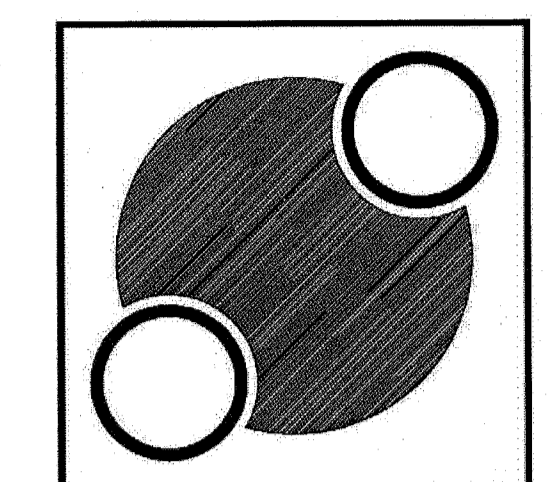


3-WAY SWITCH DETAIL



EMERGENCY STOP SWITCH DETAIL

- NOTES:
 1-CUSTOMER TO SUPPLY SEPERATE SECONDARY MAIN TO POWER EMERGENCY STOP CIRCUIT. COMPONENT SIZING DEPENDENT ON LOCAL SOURCE AVAILABILITY.
 2-CONNECT SUPPLY PHASES TO APPROPRIATE TAPS ON THE SUPPLY AND LOAD SIDE.
 3-CONNECT SIMULATOR/LOAD TO 400VAC TAP ONLY.
 4-DISREGARD 10 KVA TRANSFORMER WIRING & TERMINATIONS DETAIL WHEN USING A POWER DISTRIBUTION UNIT.



Nucletron Corporation

NUCLETRON RETAINS EXCLUSIVE COPYRIGHT TO ALL INFORMATION RELEASED HEREIN. ALL EQUIPMENT AND INFORMATION SHOWN IS CONSIDERED CONFIDENTIAL AND THE EXCLUSIVE PROPERTY OF THE NUCLETRON CORPORATION. DOCUMENTATION WILL NOT BE MODIFIED, DUPLICATED, OR RESOLD TO THIRD PARTY VENDORS, IN PART OR ENTIRETY, WITHOUT EXPRESS PERMISSION OF NUCLETRON.

NUCLETRON CORPORATION
8671 ROBERT FULTON DRIVE
COLUMBIA, MD 21048-2133

TELEPHONE: (800) 336-2249
FAX: (410) 312-4196

Project Name and Location
Maine Medical Center
Portland, ME

NO.	REVISION/ISSUE	DATE

Drawn By: **Predosa**
Checked By:
Date: **10/26/09**

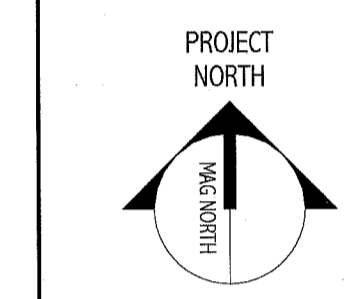
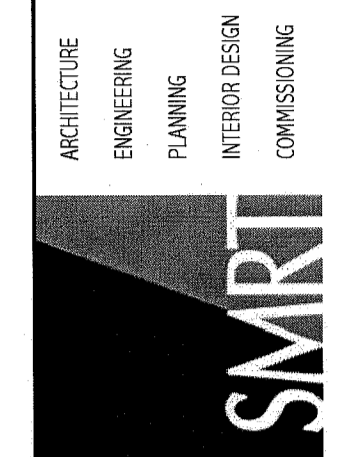
PROJECT NUMBER: **NUC2009-CP05**
QUOTATION NUMBER: **A09030401R**
QUOTATION DATE: **10/22/09**

CUSTOMER APPROVAL:
NUCLETRON APPROVAL:
DATE:

Project: **MMC** Sheet: **N-7**
Date: **10/26/09** Wiring Details
Scale: **1/4"=1'-0"** 7 of 8

PROJECT: NUC2009-CP05

144 Pine Street P.O. Box 618
Portland, Maine 04104
Tel: (207) 773-3846
Fax: (207) 773-1070
www.nucletron.com



CT SIMULATOR REPLACEMENT
RE-ISSUED FOR CONSTRUCTION
02.09.10

REV	DESCRIPTION	DATE
1	RE-ISSUED FOR CONSTRUCTION	02.09.10

GRAPHIC SCALE:
0' 1'

SCALE:
PROJECT MANAGER: DIV
IC/DRAWN BY: DIV
DATE OF RECORD: DIV
PROJECT NO: 09122
DATE: 02.09.10

SHEET TITLE:
WIRING DETAILS

SHEET No.
Q-009