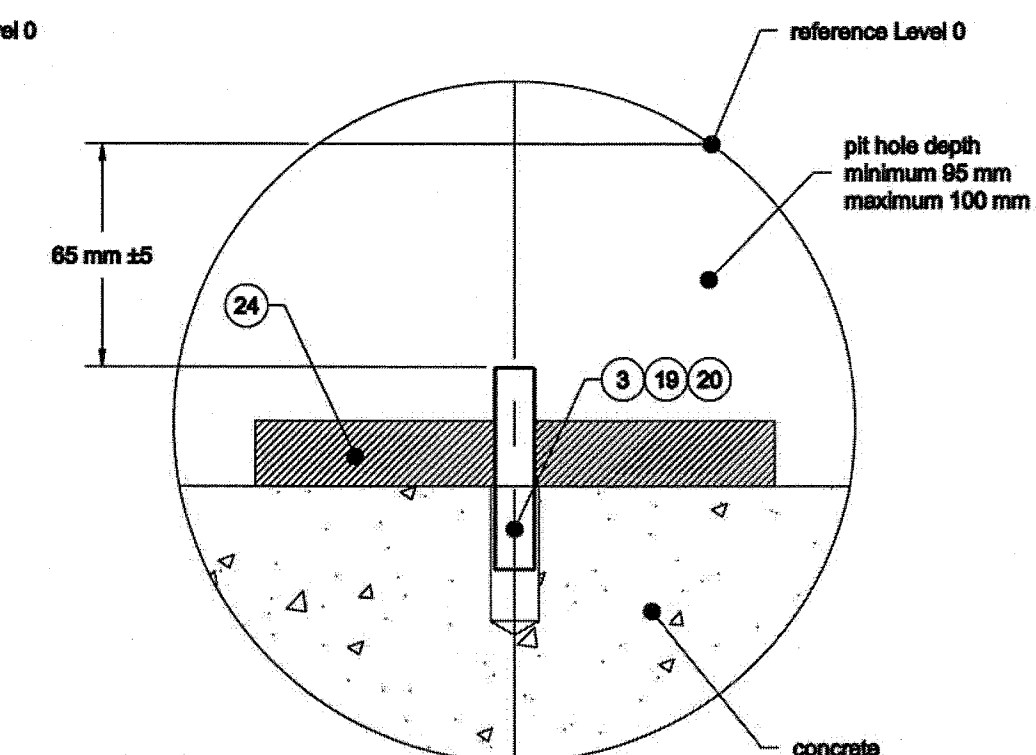
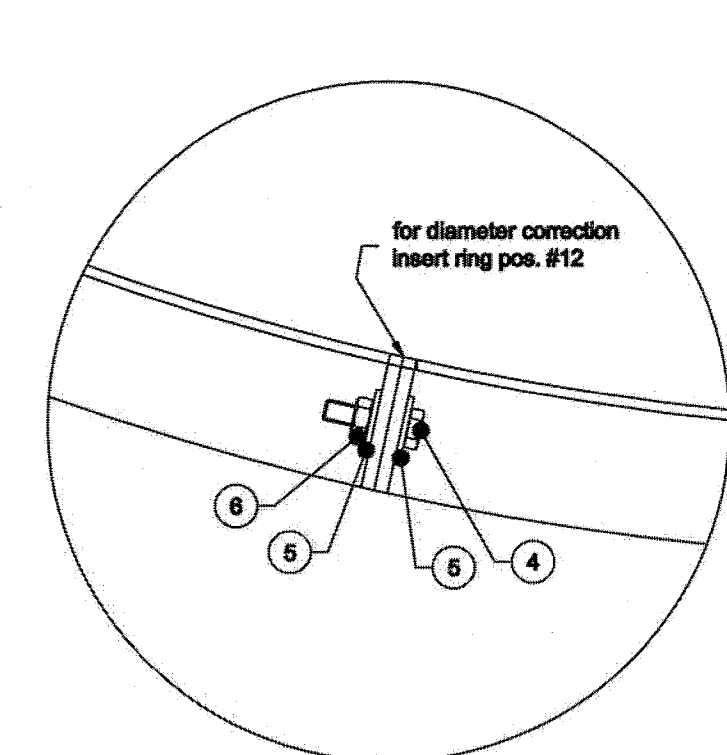


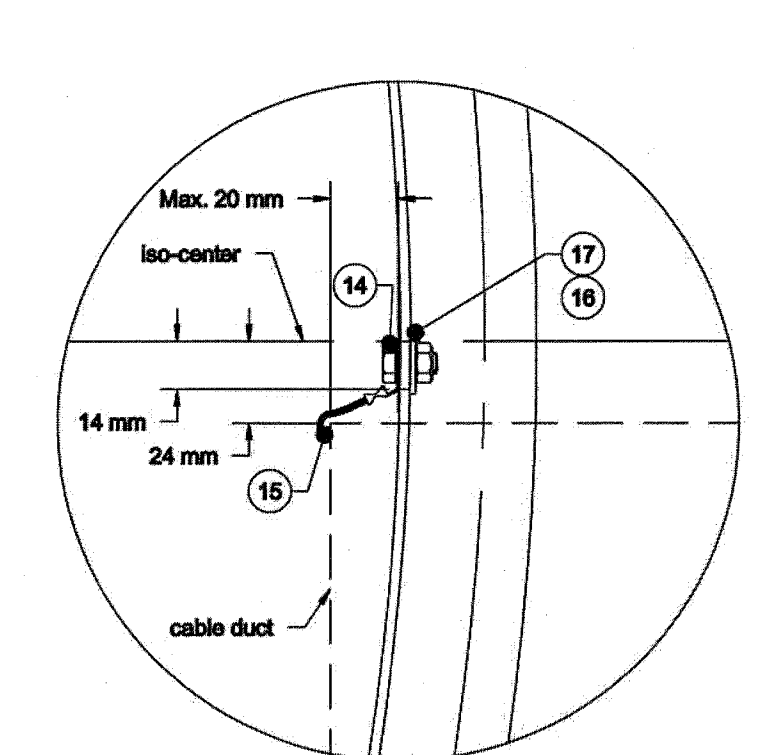
Detail A



Detail B



Detail C

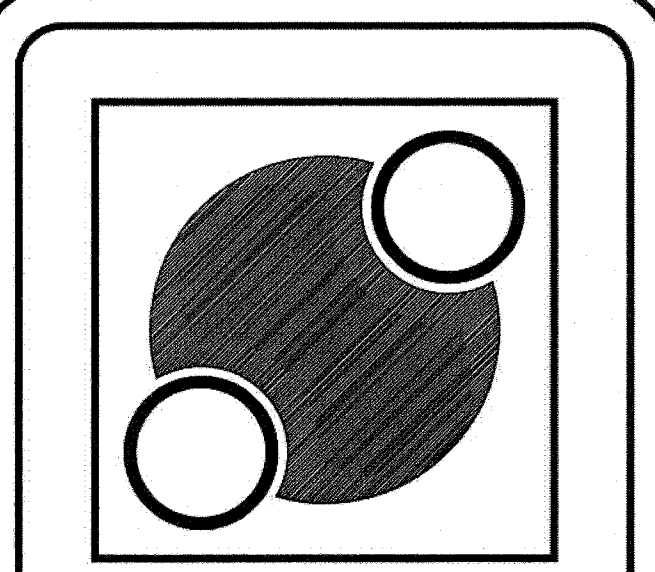


Detail D

2.4 Supplied Parts for Concrete Mould Installation			
pos. #	Description	Part Number	Quantity Received
26	Transport packing		1
25	Paper tape, width: 40 or 50 mm		1
24	Wooden plate with hole D12mm	45005-173	1
21/22/23	Concrete mould installation tool with bolt M8x60mm and nut M8	45005-064	1
19+20	Two components compound for center pin set of 100 gr. + 7 gr., with instruction		1
	Instruction: see attachment 1		1
18	Installation Instruction concrete mould:	This document	1
	including installation drawing:	45005-164	1
17	Ring, M6, toothed, D6,4 mm		1
15 + 16	Yellow/green ground wire 2,5 mm ² , with 2 eye terminals 6 mm (blue)		3 m
14	Bolt M6x10 mm, all thread		1
13	Small bracket	45005-171	8
12	Washer, M6, D18 mm, thick 1,6 mm	16 x in detail C 14 x in detail A	30
11	Bolt M6x20 mm, counter sunk		8
10	Nut M6, see also pos. 6		40 (+6)
9	Bolt M6x80 mm, all thread		8
8	8 mm Spread anchor M6.		8
7			
6	Nut M6, see also pos.10		8 (+40)
5	Washer, M6, D12 mm, thick 1,6 mm		16
4	Bolt M6x25 mm		8
3	Center pin D12x80 mm		1
2	Concrete mould piece	45005-168	3
1	Concrete mould piece with square hole	45005-167	1

Notes:

- Nucletron will install and level center pin, concrete mould and gantry support frame.
- During the rail/gantry base installation, Contractor will provide personnel for the placement of concrete:
 - In the bottom of the pit:
 - use a stiff mixture for the bottom of the pit. This will aid in stopping the concrete from pushing up inside the ring;
 - inside the ring the concrete is leveled from the bottom of the ring;
 - use the concrete mould installation tool to level the concrete from the center point to the bottom of the ring;
 - proper level of the bottom of the pit is reached when the top plate of the installation tool rides on the concrete mould and the tools is spirit level.
 - Outside the concrete mould ring:
 - Outside the ring the concrete is leveled from the upper side of the concrete mould ring to the level of the adjacent floor
- All rail and gantry components are supplied by Nucletron; concrete supplied by Owner.
- Minimum sub-floor thickness is recommended only; structural engineers are responsible for floor design in support of stress points
- Provide a minimum soil bearing value of 2,500 PSF
- Concrete to be 3,000 PSI minimum
- Pour number two to have 3/8" maximum aggregate size



Nucletron Corporation

NUCLETRON RETAINS EXCLUSIVE COPYRIGHT TO ALL INFORMATION RELEASED HEREIN. ALL EQUIPMENT AND INFORMATION SHOWN IS CONSIDERED CONFIDENTIAL AND THE EXCLUSIVE PROPERTY OF THE NUCLETRON CORPORATION. DOCUMENTATION WILL NOT BE MODIFIED, DUPLICATED, OR RESOLD TO THIRD PARTY VENDORS, IN PART OR ENTIRETY, WITHOUT EXPRESS PERMISSION OF NUCLETRON.

NUCLETRON CORPORATION
 8871 ROBERT FULTON DRIVE
 COLUMBIA, MD 21046-2133
 TELEPHONE: (800) 336-2249
 FAX: (410) 312-4196

Project Name and Location
Maine Medical Center
 Portland, ME

NO.	REVISION/ISSUE	DATE

Drawn By: **Podrosa**
 Checked By:
 Date: **10/26/09**

PROJECT NUMBER: **NUC2009-CP05**
 QUOTATION NUMBER: **A09030401R**
 QUOTATION DATE: **10/22/09**

CUSTOMER APPROVAL:
 NUCLETRON APPROVAL:
 DATE:

Project: **MMC** Sheet: **N-4**
 Date: **10/26/09** Simulator Rail Installation
 Scale: **1/4"=1'-0"** 4 of 8

PROJECT: NUC2009-CP05