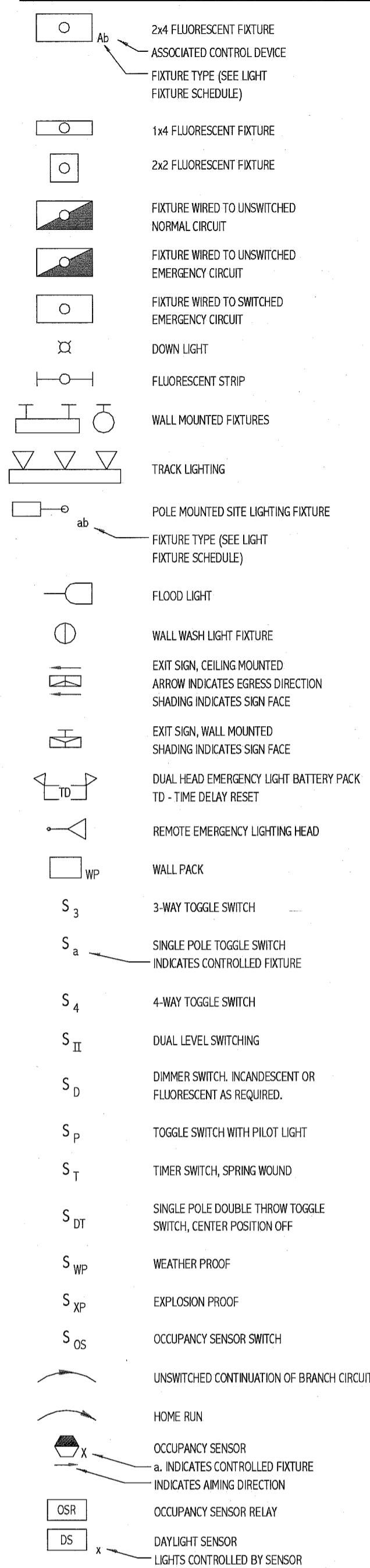
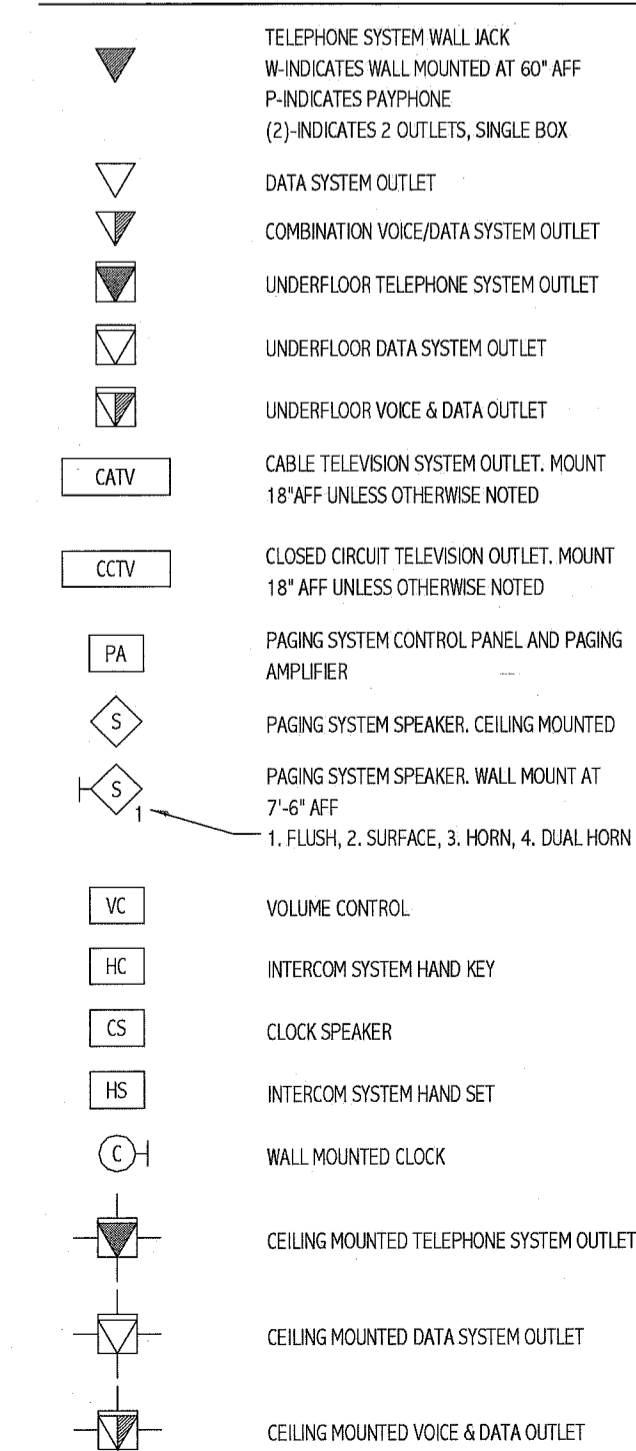


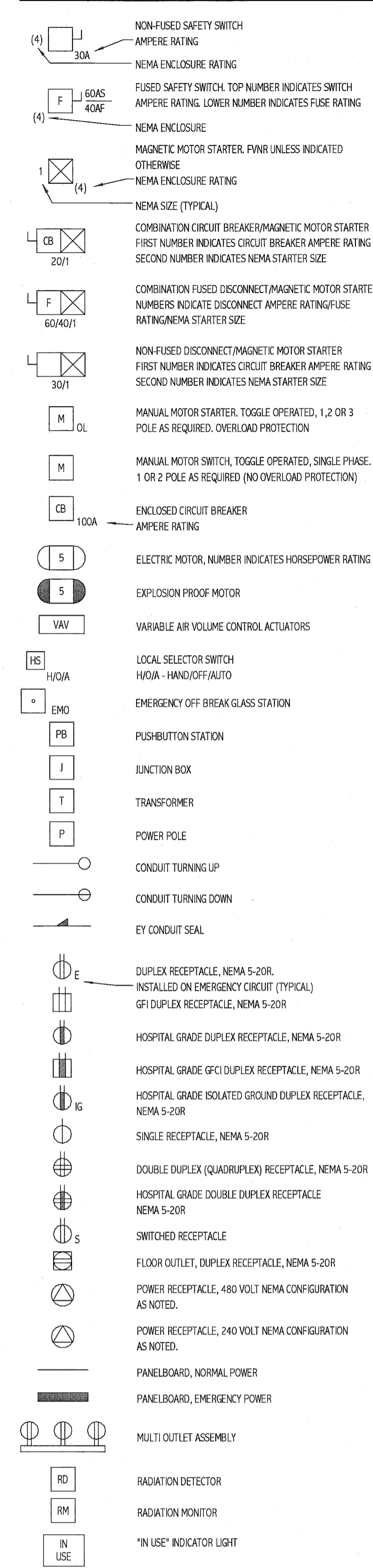
LIGHTING



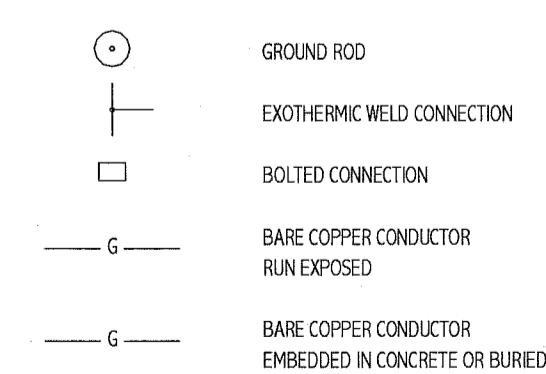
COMMUNICATION & DATA SYSTEMS



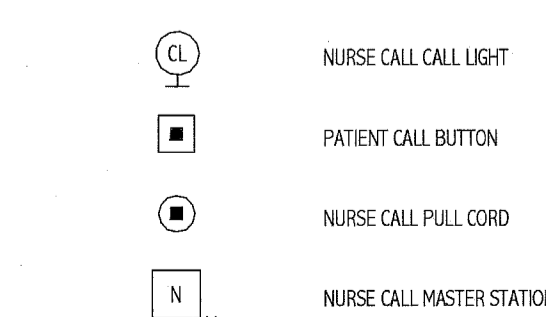
POWER



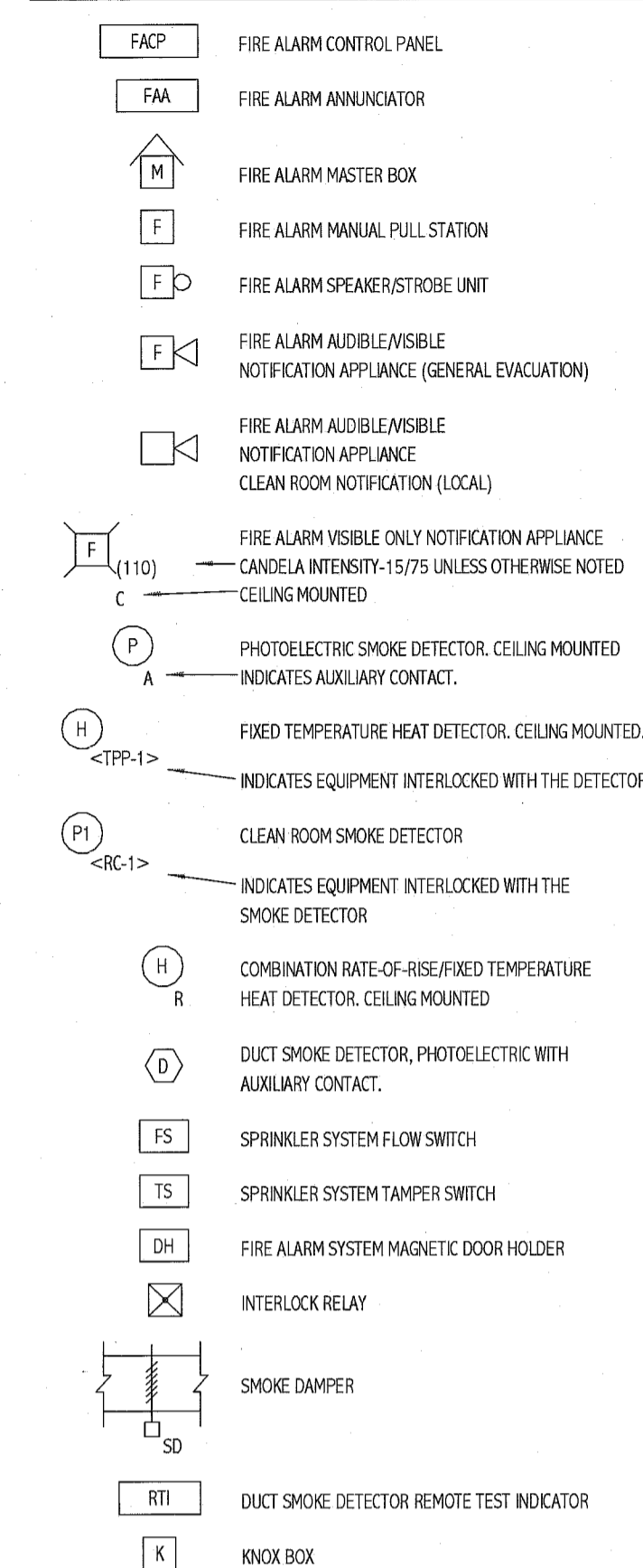
GROUNDING



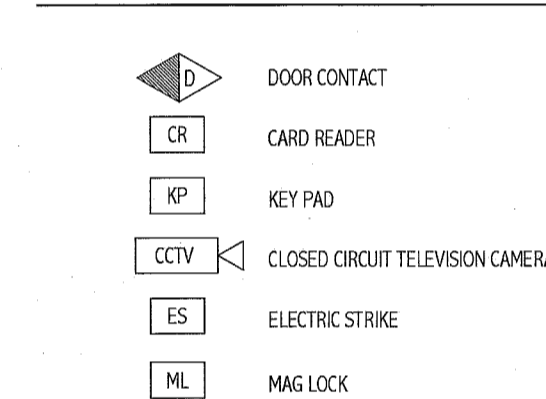
NURSE CALL SYSTEM



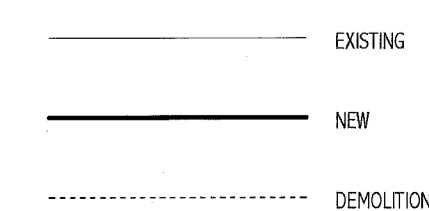
FIRE ALARM



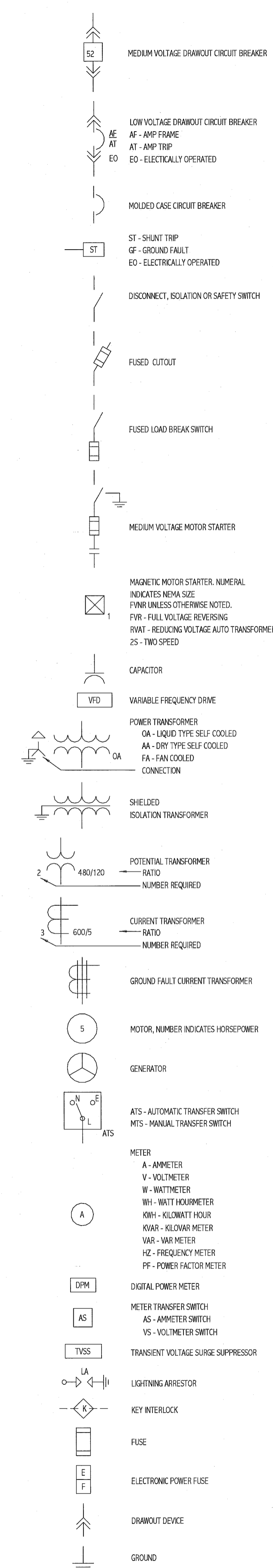
SECURITY SYSTEMS



LINE TYPES



ONE LINE DIAGRAM



ABBREVIATIONS

A/AMP	AMPERE	LA	LIGHTNING ARRESTER
AFF	ABOVE FINISHED FLOOR	LTG	LIGHTING
AFG	ABOVE FINISHED GRADE	MC	METAL CLAD
AHI	AUTHORITY HAVING JURISDICTION	MCB	MAIN CIRCUIT BREAKER
AK	AMPERE INTERRUPTING CAPACITY	MFR	MANUFACTURER
AWG	AMERICAN WIRE GAUGE	MI	MINERAL INSULATED
BFG	BELOW FINISHED GRADE	MLO	MAIN LUG ONLY
BOS	BOTTOM OF STEEL	MTD	MOUNTED
C	CONDUIT, CONDUCTOR	MV	MEDIUM VOLTAGE
CATV	CABLE TELEVISION	NC	NORMALLY CLOSED
CB	CIRCUIT BREAKER	NEC	NATIONAL ELECTRICAL CODE
CCTV	CLOSED CIRCUIT TELEVISION	NEG	NEGATIVE
CPT	CONTROL POWER TRANSFORMER	NEUT	NEUTRAL
CT	CURRENT TRANSFORMER	NIC	NOT IN CONTRACT
CU	COPPER	NO	NORMALLY OPEN
DACT	DIGITAL ALARM COMMUNICATOR	NOT	NOT TO SCALE
DMT	DIRECT BURIED	PF	POWER FACTOR
DN	DOWN	PH	PHASE
ENT	ELECTRICAL METALLIC TUBING	PVC	POLYVINYL CHLORIDE
EWC	ELECTRIC WATER COOLER	RGS	RIGID STEEL CONDUIT
FA	FIRE ALARM ANNUNCIATOR	RSC	RIGID STEEL CONDUIT
FACP	FIRE ALARM CONTROL PANEL	RTD	RESISTANCE TEMPERATURE
FBD	FURNISHED BY OTHERS	SN	SOLID NEUTRAL
FU	FUSE	STP	SHIELDED TWISTED PAIR
FWE	FURNISHED WITH EQUIPMENT	STT	SHIELDED TWISTED TRIPLET
GEN	GENERATOR	SWBD	SWITCHBOARD
GFCI	GROUND FAULT CIRCUIT BREAKER	SWGR	SWITCHGEAR
GND	GROUND	TOS	TOP OF STEEL
HP	HORSEPOWER	TRANSF	TRANSFORMER
HTR	HEATER	TVSS	TRANSIENT VOLTAGE SURGE SUPPRESSOR
IG	ISOLATED GROUND	V	VOLT
IMC	INTERMEDIATE METAL CONDUIT	VA	VOLT-AMPERE
K	KILO	VAR	VOLT-AMPERE REACTIVE
KMIL	THOUSAND CIRCULAR MILS	WM	WATT METER
KV	KILOVOLT	WP	WEATHER PROOF
KVA	KILOVOLT-AMPERE	XFMR	TRANSFORMER
KVAR	KILOVOLT-AMPERE REACTIVE	XP	EXPLOSION PROOF
KW	KILOWATT		
KWH	KILOWATT-HOUR		

GENERAL NOTES:

- ALL WORK SHALL BE PERFORMED IN ACCORDANCE WITH NFPA-70, NATIONAL ELECTRICAL CODE (NEC).
- ALL MOTOR SAFETY SWITCHES, CIRCUIT BREAKERS, DISCONNECTS AND MOTOR STARTERS ARE PROVIDED BY DIVISION 16000 UNLESS NOTED AS FURNISHED WITH EQUIPMENT (FWE).
- UNLESS OTHERWISE NOTED CONVENIENCE RECEPTACLES SHALL BE MOUNTED 18-INCHES AFF. LIGHTING TOGGLE SWITCHES 48-INCHES AFF. DATA SYSTEM OUTLETS 18-INCHES AFF. FIRE ALARM NOTIFICATION DEVICES 60-INCHES AFF OR 6-INCHES BELOW CEILING, WHICHEVER IS LOWER, AND FIRE ALARM MANUAL PULL STATIONS 48-INCHES TO TOP OF DEVICE.
- ALL PENETRATIONS THROUGH FLOORS, RATED WALLS AND PARTITIONS SHALL BE SEALED WITH UL APPROVED FIRE SEALANT MATERIAL TO MAINTAIN THE RATING OF SEPARATION.
- ALL ENCLOSURES, CONDUIT BODIES AND THEIR COVERS CONTAINING FIRE ALARM SYSTEM CONDUCTORS SHALL BE PAINTED RED.
- AN EQUIPMENT GROUNDING CONDUCTOR SHALL BE INSTALLED WITH EVERY FEEDER AND BRANCH CIRCUIT.
- UNLESS OTHERWISE NOTED WIRING SHALL BE 2#12 AWG CONDUCTORS AND #12 GND. HOME RUNS FED FROM 200-1P CIRCUITS IN EXCESS OF 100 FEET SHALL BE #10 AWG.
- FLEXIBLE CONNECTIONS TO MOTORS SHALL BE LIQUID TIGHT FLEXIBLE METAL CONDUIT, UNLESS OTHERWISE NOTED.
- LIGHTING TOGGLE SWITCHES SHALL BE COMMERCIAL SPECIFICATION GRADE 120/277V VOLT, SIDE WIRED AND PROVIDED WITH GROUNDING SCREW. LEVITON, PASS AND SEYMOUR OR APPROVED EQUAL. COORDINATE COLOR WITH ARCHITECT.
- CONVENIENCE RECEPTACLES SHALL BE COMMERCIAL SPECIFICATION GRADE GROUNDING TYPE NEMA 5-20R. SIDE WIRED. LEVITON, PASS AND SEYMOUR OR APPROVED EQUAL. COORDINATE COLOR WITH ARCHITECT.
- PROVIDE WALL PLATES FOR ALL WIRING DEVICES, NYLON SMOOTH TYPE IN FINISHED AREAS AND GALVANIZED IN UNFINISHED AREAS.
- ALL WIRING SHALL BE 600V, COPPER WITH THIN/WITHIN INSULATION.
- DIMMING SWITCHES AND BALLASTS TO BE CAPABLE OF DIMMING FIXTURES TO 2% OF RATED FULL OUTPUT.
- NEW PANELBOARD TO BE PROVIDED WITH COPPER BUS COPPER GROUND BUS, HINGED DOOR ENCLOSE AND FULLY RATED BOLT ON CIRCUIT BREAKERS.

GENERAL NOTE

- ALL GENERAL NOTES, SYMBOL LISTS, AND DETAILS ARE TO BE CONSIDERED AS APPLICABLE TO ALL ELECTRICAL DRAWINGS FOR THIS PROJECT. SYMBOLS AND ABBREVIATIONS SHOWN ON THIS SHEET ARE FOR REFERENCE ONLY AND DO NOT INDICATE THEIR INCORPORATION IN THE DESIGN.

144 Fire Sheet (P.0) Box 6.8
Portland, Maine 04104
Tel: (207) 772-2846
Fax: (207) 772-2070
www.smrt.com

ARCHITECTURE
ENGINEERING
PLANNING
INTERIOR DESIGN
COMMISSIONING

SMRT

STATE OF MAINE
DANIEL J. ROBERTS
NO. 9838
LICENSED PROFESSIONAL ENGINEER

PROJECT NORTH

CT SIMULATOR REPLACEMENT

RE-ISSUED FOR CONSTRUCTION 02.09.10

REV	DATE	DESCRIPTION
1	02/29/10	RE-ISSUED FOR CONSTRUCTION
2	01/20/10	RE-ISSUED FOR CONSTRUCTION

GRAPHIC SCALE:
0" 1"

SCALE: 12" = 1'-0"

PROJECT MANAGER: DM
K/DRAWN BY: CDS
A/E OF RECORD: DT
PROJECT NO.: 09122
DATE: 1-20-10
SHEET TITLE: LEGEND AND GENERAL NOTES

SHEET No. E-001