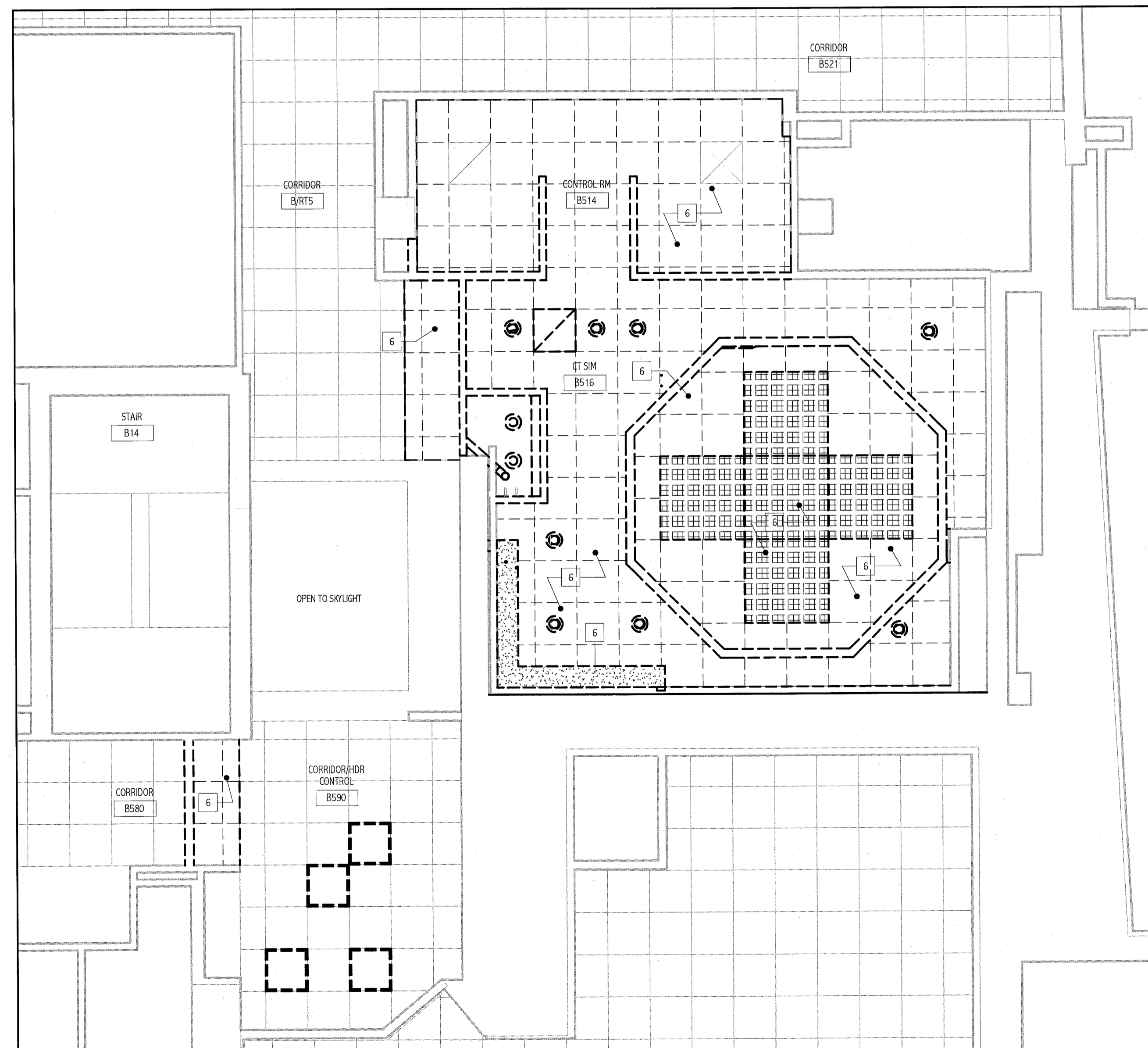


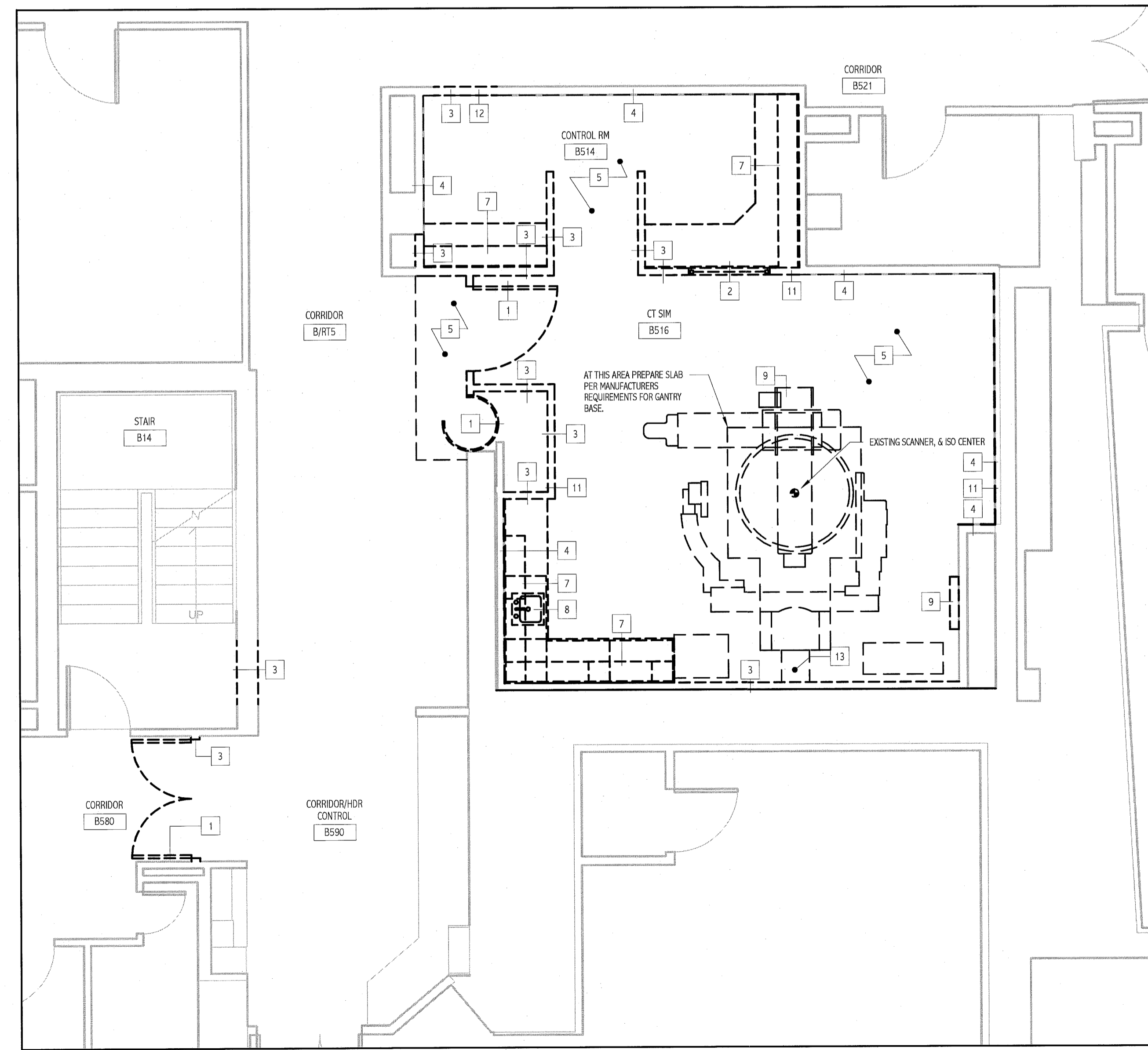
LIFE SAFETY SYMBOLS:

- EXIT SIGN, ARROWS INDICATE EGRESS DIRECTION, SHADING INDICATES SIGN FACE.
- FIRE ALARM AUDIBLE/VISUAL NOTIFICATION APPLIANCE. NUMBER IN PARENTHESES INDICATES ILLUMINATION IN CANDELA.
- FIRE ALARM VISIBLE-ONLY NOTIFICATION APPLIANCE.
- EMERGENCY LIGHTING
- PULL STATION
- FIRE EXTINGUISHER CABINET w/ HOSE
- FIRE EXTINGUISHER
- EGRESS
- EGRESS HANDICAP
- EGRESS PATH
- SMOKE PARTITION
- 1 HR
- 2 HR

1 LIFE SAFETY PLAN/CODE PLAN
1/8" = 1'-0"



3 BASEMENT REFLECTED CEILING DEMOLITION PLAN
1/4" = 1'-0"



2 BASEMENT DEMOLITION PLAN
1/4" = 1'-0"

LIFE SAFETY NOTES:

1. EGRESS LIGHTING SHALL BE PROVIDED IN ALL CORRIDORS AND PASSAGEWAYS LEADING TO EXITS. A MINIMUM AVERAGE OF 1 FOOT-CANDLE IS TO BE PROVIDED. THE SOURCE OF ILLUMINATION SHALL BE PROVIDED FOR 90 MINUTES AND CAN BE ANY OF THE FOLLOWING:
 - A) GENERATOR BACKED-UP LIGHT FIXTURES.
 - B) BATTERY BALLAST LIGHT FIXTURES
 - C) INDIVIDUAL BATTERY UNIT WITH UNIT MONITOR OR REMOTE LAMPS.

GENERAL DEMOLITION NOTES:

1. COORDINATE EXTENT OF DEMOLITION WITH LOCATIONS OF PARTITIONS DESCRIBED ON PLANS AND WITH LOCATIONS OF FINISHES NOTED AS EXISTING TO REMAIN.
2. ANY WALL, PARTITION, OR SURFACE DISTURBED BECAUSE OF NEW WORK OR DEMOLITION SHALL BE PATCHED AND FINISHED CONTINUOUSLY TO THE NEAREST CORNER UNLESS NOTED OTHERWISE. MATCH EXISTING ADJACENT CONSTRUCTION FINISHES, CONTINUITY, AND FIRE RATINGS UNLESS NOTED OTHERWISE.
3. PROTECT ALL FINISHES, MATERIALS AND EQUIPMENT NOTED AS EXISTING TO REMAIN. CONTRACTOR SHALL BE RESPONSIBLE TO REPLACE ALL FINISHES, MATERIALS, AND EQUIPMENT DAMAGED DURING CONSTRUCTION.
4. DIMENSIONS INDICATED +/- ARE EXISTING CONDITION DIMENSIONS TO BE VERIFIED IN FIELD.
5. CONTRACTOR TO HOLD PRE-DEMOLITION MEETING WITH OWNER, CONSTRUCTION MANAGER, SUB-CONTRACTORS, ETC. PRIOR TO BEGINNING DEMOLITION WORK TO REVIEW HOSPITALS POLICIES, NOISE CONTROL MEASURES, ETC.
6. CLEARLY IDENTIFY AND TAG MECHANICAL, PLUMBING, AND ELECTRICAL FIXTURES OR EQUIPMENT THAT ARE STILL IN USE PRIOR TO DEMOLITION TO AVOID ACCIDENTAL REMOVAL.
7. WALL INDICATED WITH A DASHED LINE ARE TO BE REMOVED COMPLETE. IF WALL IS BEARING PRIOR TO REMOVAL, IF SO, CONTACT ARCHITECT/ENGINEER IMMEDIATELY.
8. SEE M.E.P. DRAWINGS FOR THE SCOPE OF DEMOLITION IN THOSE DISCIPLINES.

DEMOLITION PLAN KEY NOTES:

- 1 REMOVE DOOR, FRAME AND HARDWARE. COORDINATE WITH OWNER THOSE ITEMS TO BE SALVAGED PRIOR TO REMOVAL.
- 2 REMOVE WINDOW FRAME, GLAZING, AND TRIM. SAVE LEAD GLASS FOR REUSE.
- 3 REMOVE WALL OR PORTION OF WALL INDICATED BY DASHED LINE. PRIOR TO REMOVAL, IDENTIFY IF WALL IS LOAD BEARING. IF FOUND TO BE A BEARING WALL NOTIFY ARCHITECT IMMEDIATELY.
- 4 REMOVE WALL COVERING FROM TAGGED SIDE OF WALL OR PORTION OF WALL INDICATED BY DASHED LINE. PATCH AND PREPARE FOR FINISHES.
- 5 REMOVE FINISH FLOOR MATERIAL (IF ANY) AND BASE. PREPARE SURFACE FOR NEW FINISHES AS REQUIRED BY SCHEDULE AND SPECIFICATIONS.
- 6 REMOVE CEILING SYSTEM COMPLETE. I.E. FRAMING MEMBERS, TRACKS, WIRES, LIGHTING, ETC. COORDINATE EXTENTS WITH SCOPE OF NEW WORK.
- 7 REMOVE CASEWORK AND COUNTER TOP. COORDINATE WITH OWNER THOSE ITEMS TO BE SALVAGED PRIOR TO REMOVAL.
- 8 REMOVE PLUMBING FIXTURE. CAP FLUSH WITH EXISTING WALL OR FLOOR. COORDINATE WITH OWNER THOSE ITEMS TO BE SALVAGED PRIOR TO REMOVAL.
- 9 REMOVE EQUIPMENT. COORDINATE WITH OWNER THOSE ITEMS TO BE SALVAGED PRIOR TO REMOVAL.
- 10 *
- 11 REMOVE LASER. COORDINATE WITH OWNER THOSE ITEMS TO BE SALVAGED PRIOR TO REMOVAL. CABINET TO REMAIN FOR NEW LASER INSTALL.
- 12 RELOCATE EXISTING ELECTRICAL PANEL PER ELECTRICAL DRAWINGS.
- 13 REMOVE PORTION OF FLOOR REQUIRED FOR ELECTRICAL TRENCH. RE: ELECTRICAL.

144 Fire Street/PO Box 618
Portland, Maine 04108
Tel: (207) 772-3844
Fax: (207) 772-1070
www.smri.com

ARCHITECTURE
ENGINEERING
PLANNING
INTERIOR DESIGN
COMMISSIONING

SMRI

LICENSED ARCHITECT
DEREK J. VEILLEUX
No. 3185
STATE OF MAINE
2-7-10

PROJECT NORTH

CT SIMULATOR REPLACEMENT
RE-ISSUED FOR CONSTRUCTION 02.09.10

REV	DATE	DESCRIPTION
0	02.09.10	RE-ISSUED FOR CONSTRUCTION
1	01.20.10	ISSUED FOR CONSTRUCTION

GRAPHIC SCALE:
0' 1'

SCALE: As Indicated

PROJECT MANAGER: DW
DRAWN BY: CS
A/E OF RECORD: DW
PROJECT NO: 09122
DATE: 01.20.10

SHEET TITLE:
BASEMENT LIFE SAFETY PLAN & DEMOLITION PLANS

SHEET No. A-001