

Richards Wing

Fifth Floor

Renovations

Maine Medical Center
 Portland, Maine 04102

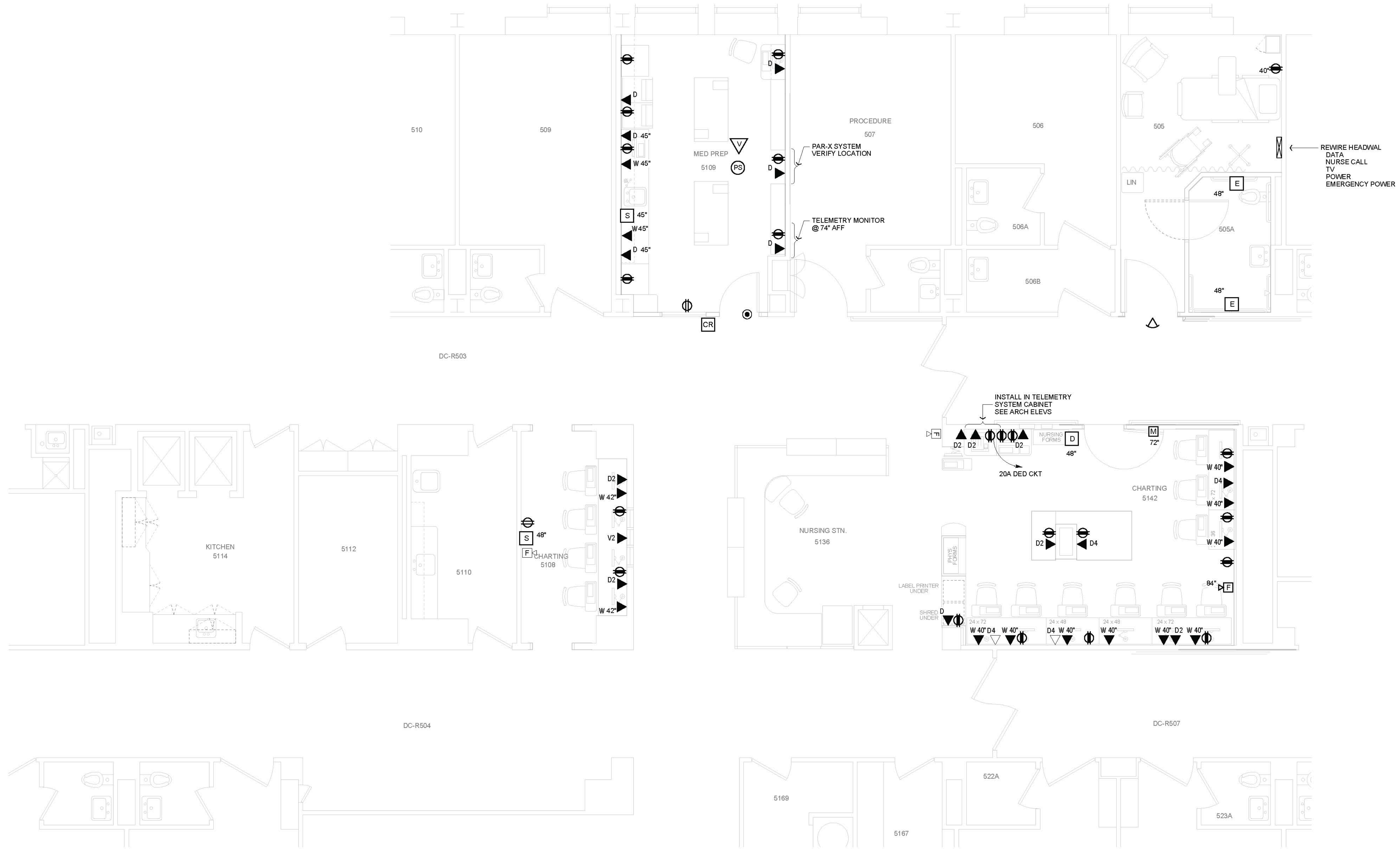
Architect
 Winton Scott Architects, PA
 Portland, Maine

Mechanical Design / Build
 Johnson & Jordan
 Portland, Maine

Electrical Power
 and Systems Plan
E 2.1

Scale: 1/4" = 1' - 0"

August 28, 2009



ELECTRICAL LEGEND

	DUPLEX OUTLET @ 18" AFF		FIRE ALARM HORN STROBE ANNUNCIATOR		NURSE CALL PATIENT STATION
	EMERGENCY POWER DUPLEX OUTLET @ 18" AFF		DOOR HOLD OPEN MAGNET FURNISHED BY HARDWARE		NURSE CALL EMERGENCY STATION
	WALL PHONE JACK		RECESSED FLUORESCENT LIGHT FIXTURE		NURSE CALL STAFF STATION
	VOICE ONLY JACK		SURFACE MOUNTED FLUORESCENT LIGHT FIXTURE		NURSE CALL DUTY STATION
	DATA ONLY JACK		CEILING MOUNTED LIGHT FIXTURE		NURSE CALL CORRIDOR LIGHT
	ELECTRICAL PANEL		CEILING MOUNTED RECESSED LIGHT FIXTURE		CEILING MOUNTED VIDEO CAMERA BY SECURITY CONTRACTOR
	SINGLE POLE SWITCH		WALL MOUNTED LIGHT FIXTURE		CARD READER BY SECURITY CONTRACTOR
	JUNCTION BOX		PAGING SPEAKER		DOOR POSITION SWITCH BY SECURITY CONTRACTOR

NOTES

- SEE OUTLET LOCATIONS WHERE SHOWN ON ARCH INTERIOR ELEVATIONS.

ELECTRICAL ITEMS TYPES

- R** EXISTING ITEM TO BE REMOVED
- RR** EXISTING ITEM TO BE REMOVED AND RELOCATED
- RL** RELOCATED EXISTING ITEM
- EXISTING POWER, SYSTEMS OR LIGHTING ITEM TO REMAIN (LIGHT LINE)
- PROPOSED POWER, SYSTEMS OR LIGHTING ITEM (BOLD LINE)