

Richards Wing

Fifth Floor

Renovations

Maine Medical Center  
 Portland, Maine 04102

Architect  
 Winton Scott Architects, PA  
 Portland, Maine

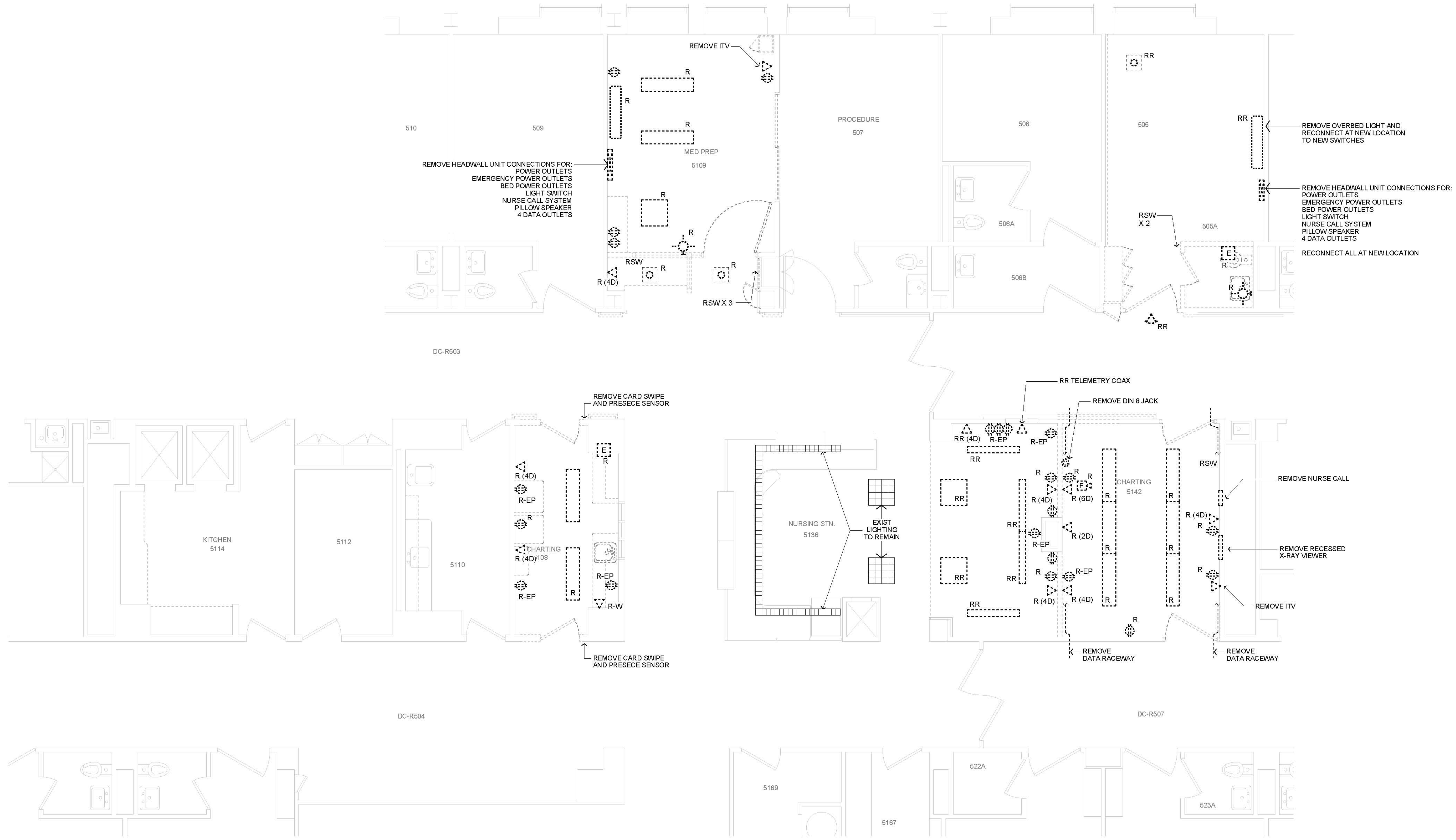
Mechanical Design / Build  
 Johnson & Jordan  
 Portland, Maine

Electrical  
 Removals Plan

E 1.1

Scale: 1/4" = 1' - 0"

August 28, 2009



ELECTRICAL LEGEND

- |  |   |  |   |  |   |
|--|---|--|---|--|---|
|  | DUPLEX OUTLET @ 18" AFF                 |  | FIRE ALARM HORN STROBE ANNUNCIATOR          |  | NURSE CALL PATIENT STATION                          |
|  | EMERGENCY POWER DUPLEX OUTLET @ 18" AFF |  | DOOR HOLD OPEN MAGNET FURNISHED BY HARDWARE |  | NURSE CALL EMERGENCY STATION                        |
|  | WALL PHONE JACK                         |  | RECESSED FLUORESCENT LIGHT FIXTURE          |  | NURSE CALL STAFF STATION                            |
|  | VOICE ONLY JACK                         |  | SURFACE MOUNTED FLUORESCENT LIGHT FIXTURE   |  | NURSE CALL DUTY STATION                             |
|  | DATA ONLY JACK                          |  | CEILING MOUNTED LIGHT FIXTURE               |  | NURSE CALL CORRIDOR LIGHT                           |
|  | ELECTRICAL PANEL                        |  | CEILING MOUNTED RECESSED LIGHT FIXTURE      |  | CEILING MOUNTED VIDEO CAMERA BY SECURITY CONTRACTOR |
|  | SINGLE POLE SWITCH                      |  | WALL MOUNTED LIGHT FIXTURE                  |  | CARD READER BY SECURITY CONTRACTOR                  |
|  | JUNCTION BOX                            |  | PAGING SPEAKER                              |  | DOOR POSITION SWITCH BY SECURITY CONTRACTOR         |

ELECTRICAL ITEMS TYPES

- |           |   |
|-----------|---|
| <b>R</b>  | EXISTING ITEM TO BE REMOVED                                     |
| <b>RR</b> | EXISTING ITEM TO BE REMOVED AND RELOCATED                       |
| <b>RL</b> | RELOCATED EXISTING ITEM   |
|           | EXISTING POWER, SYSTEMS OR LIGHTING ITEM TO REMAIN (LIGHT LINE) |
|           | PROPOSED POWER, SYSTEMS OR LIGHTING ITEM (BOLD LINE)            |