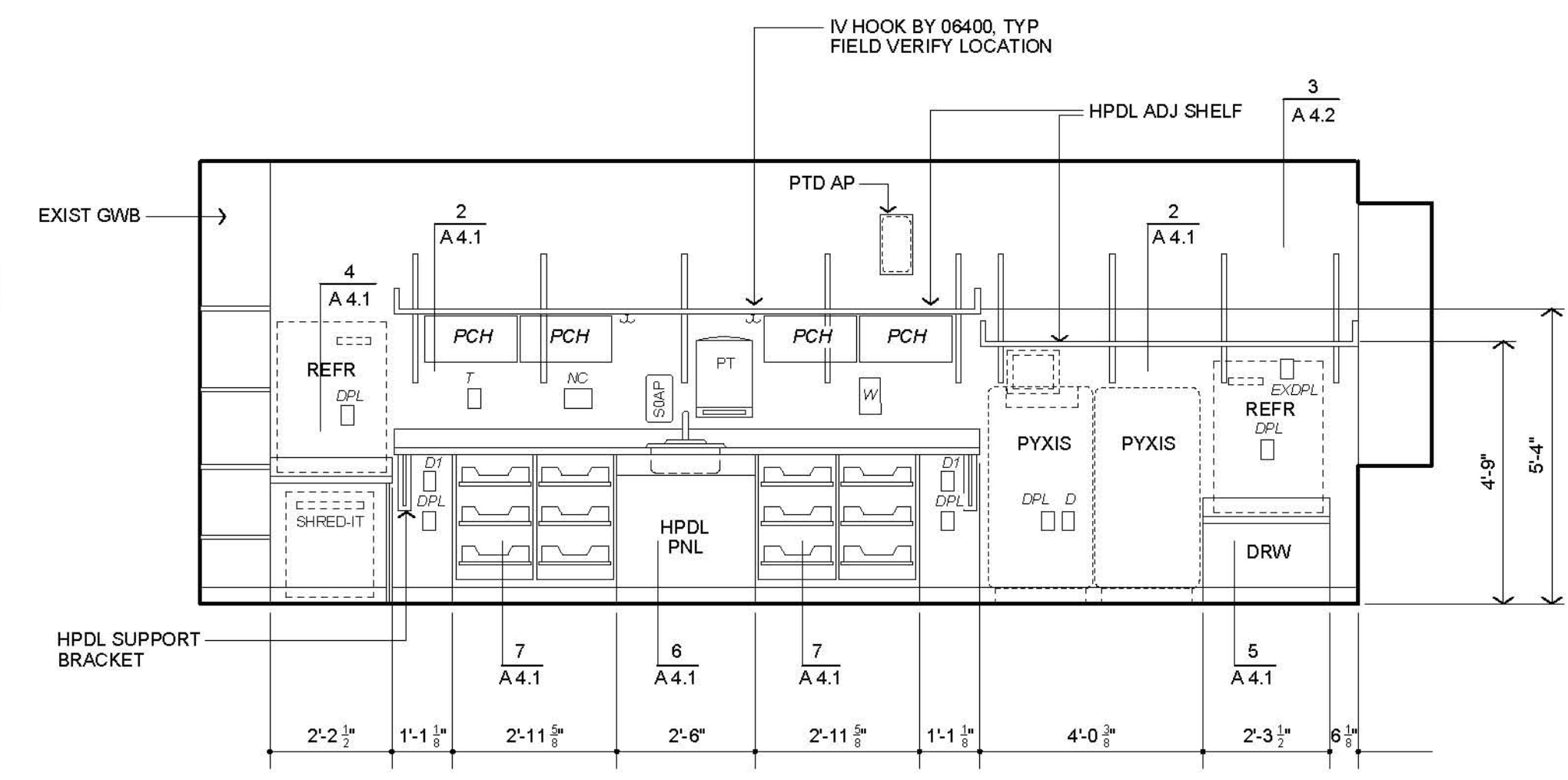
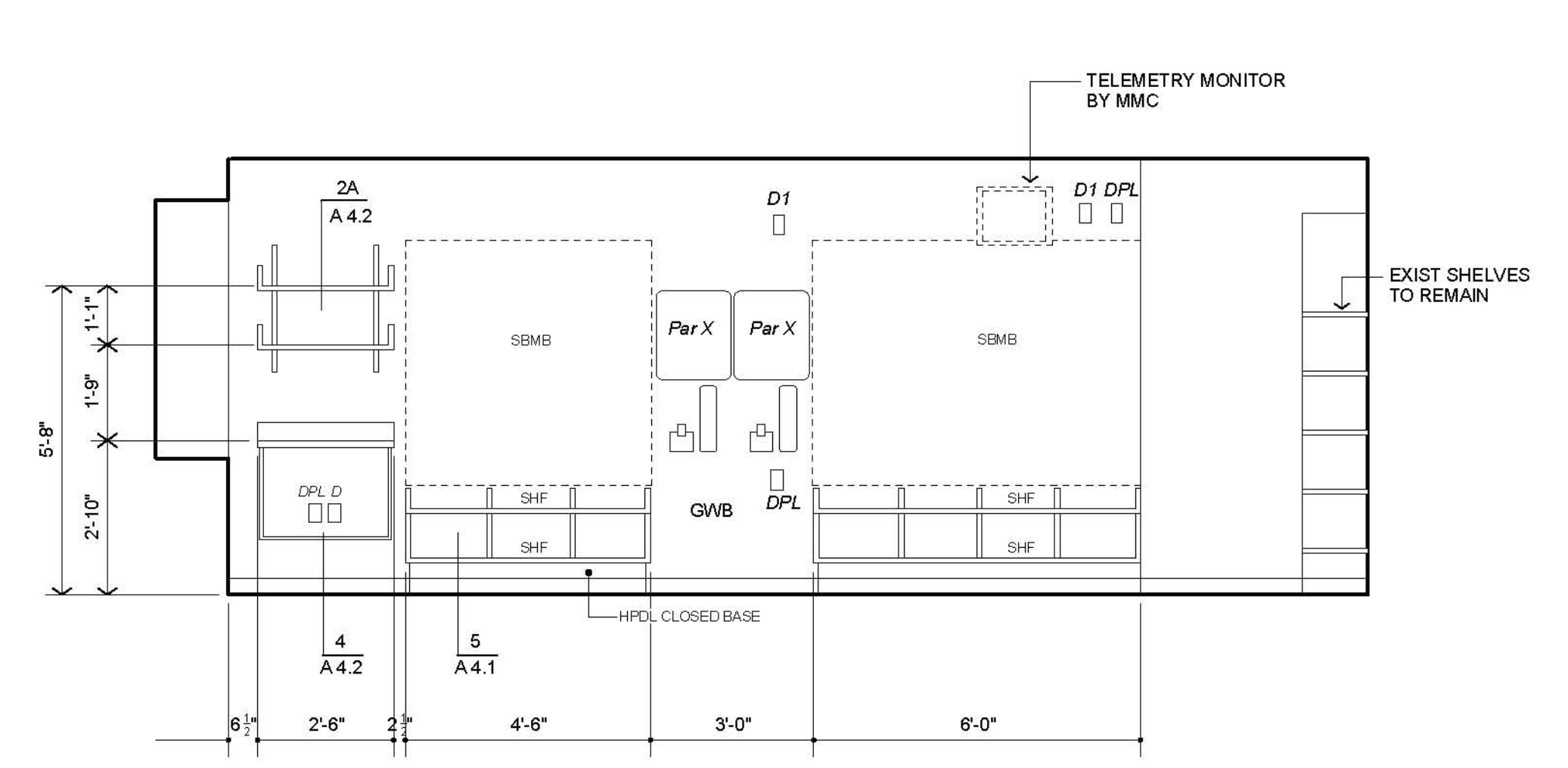


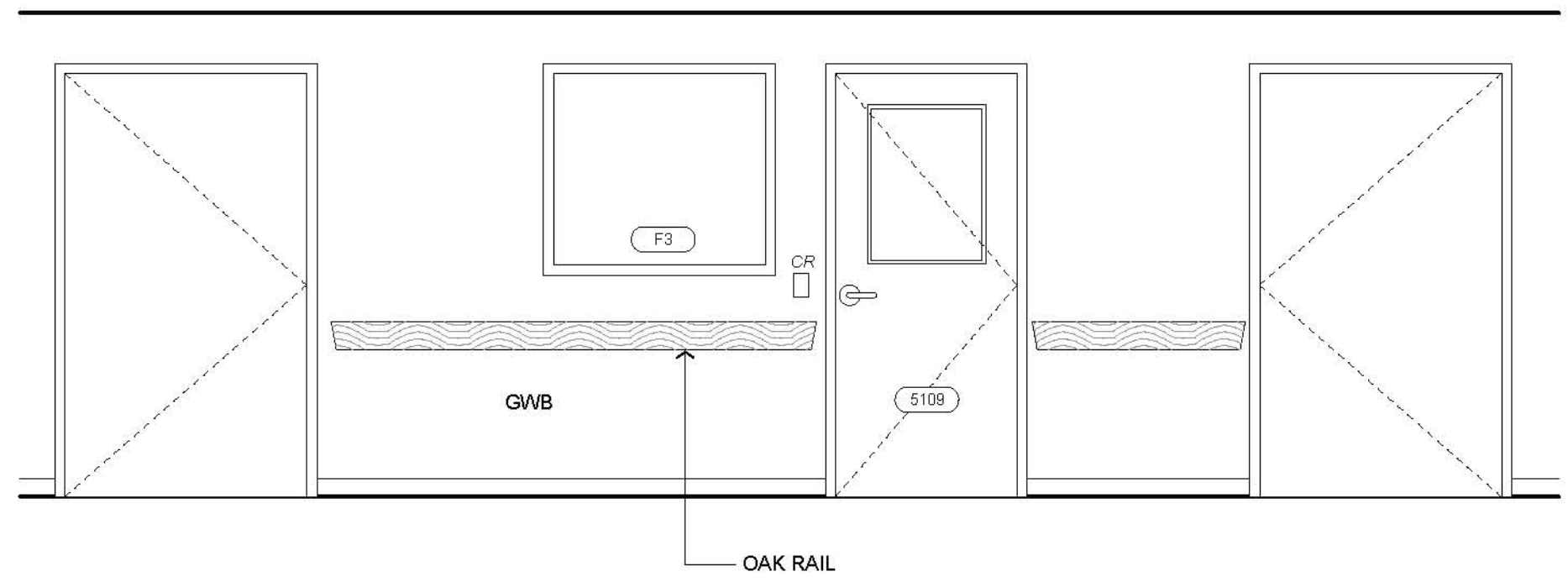
1 MED ROOM
ROOMS 5109 SOUTH



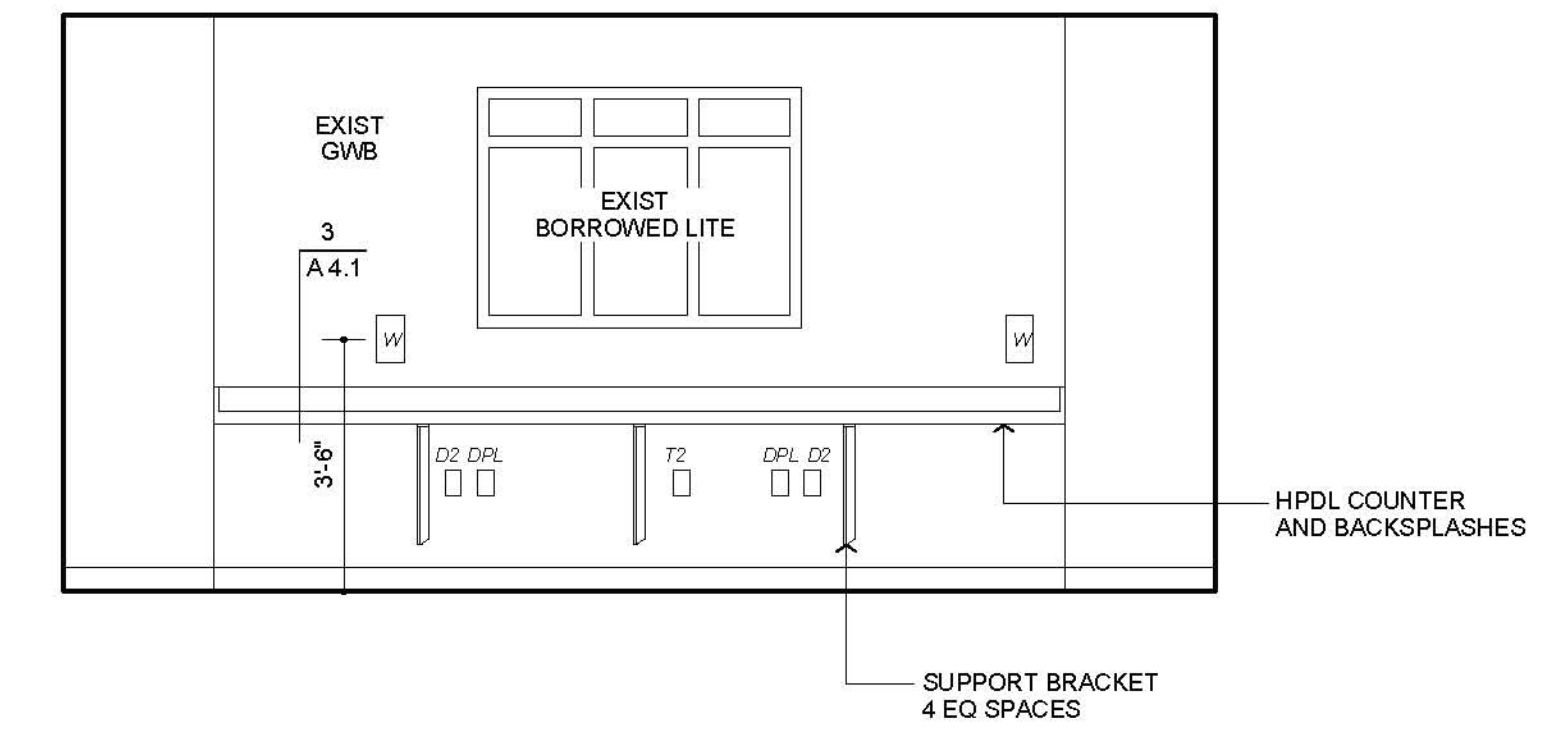
2 MED ROOM
ROOMS 5109 WEST



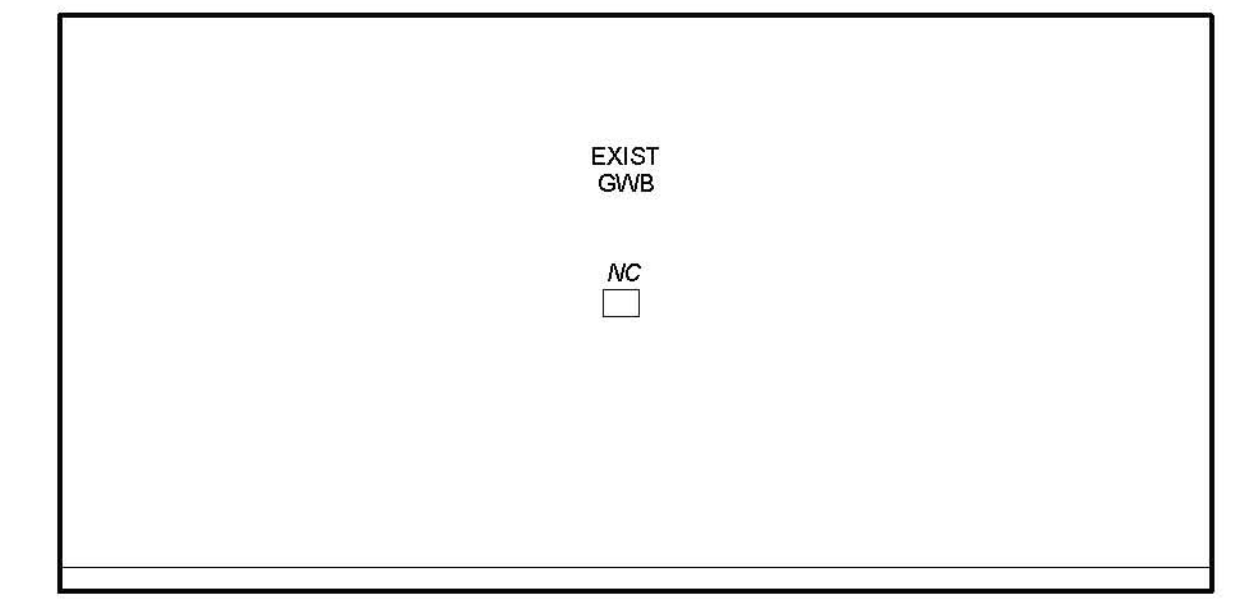
3 MED ROOM
ROOMS 5109 EAST



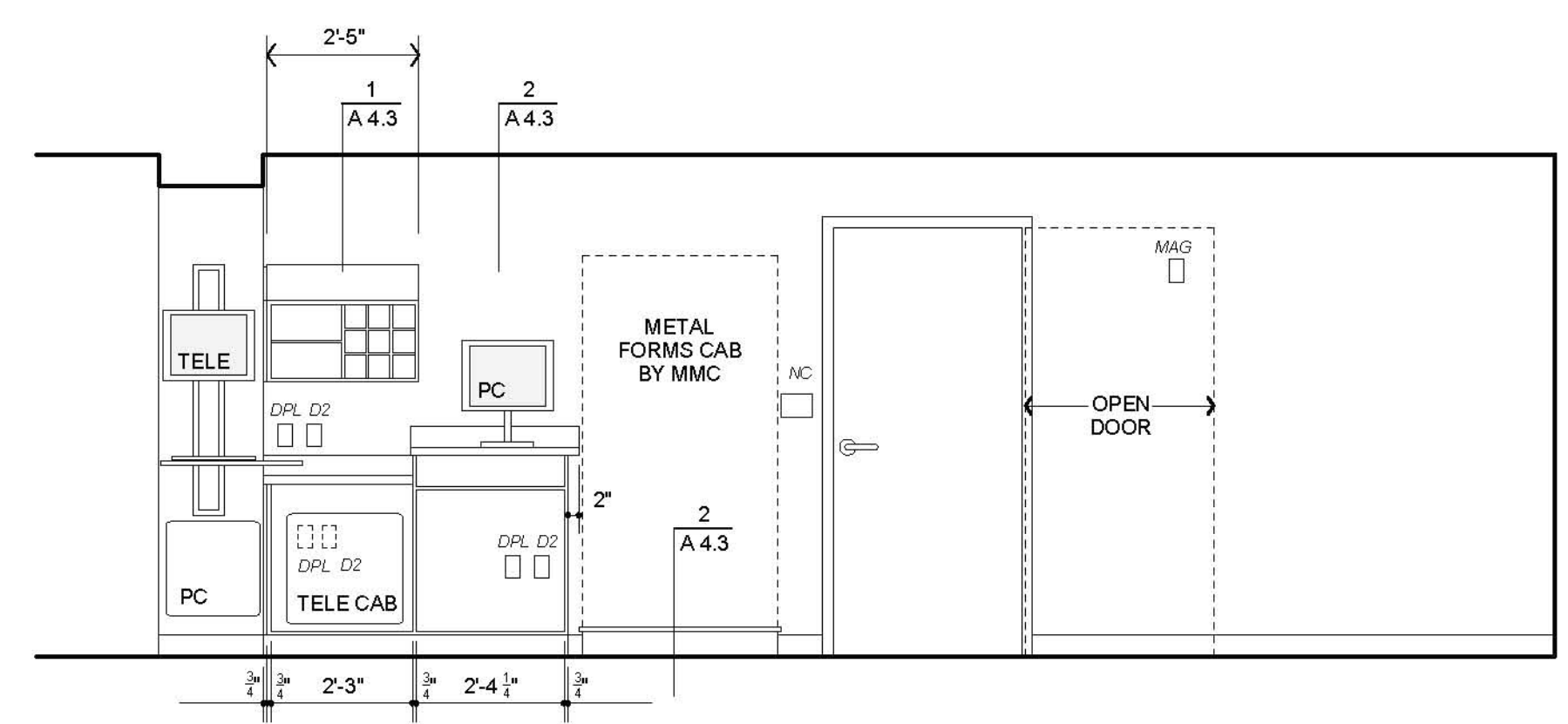
4 CHARTING
ROOM 5108 EAST



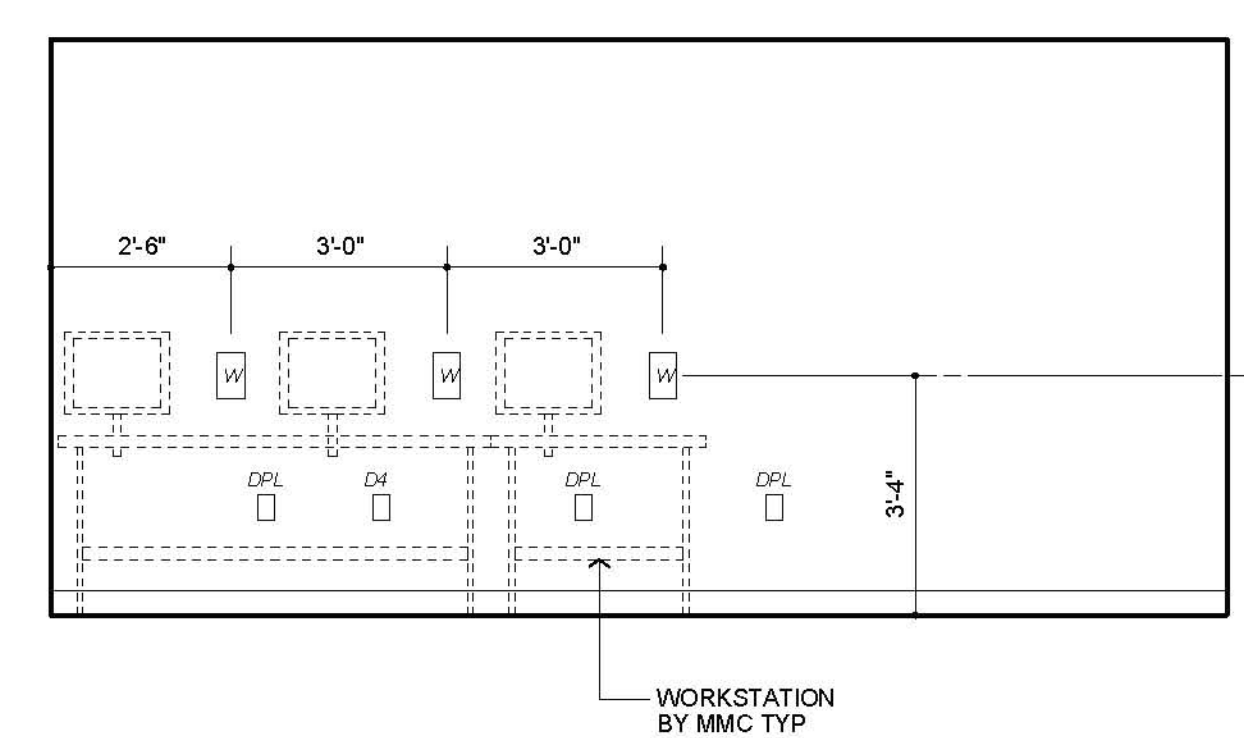
5 CHARTING
ROOM 5108 EAST



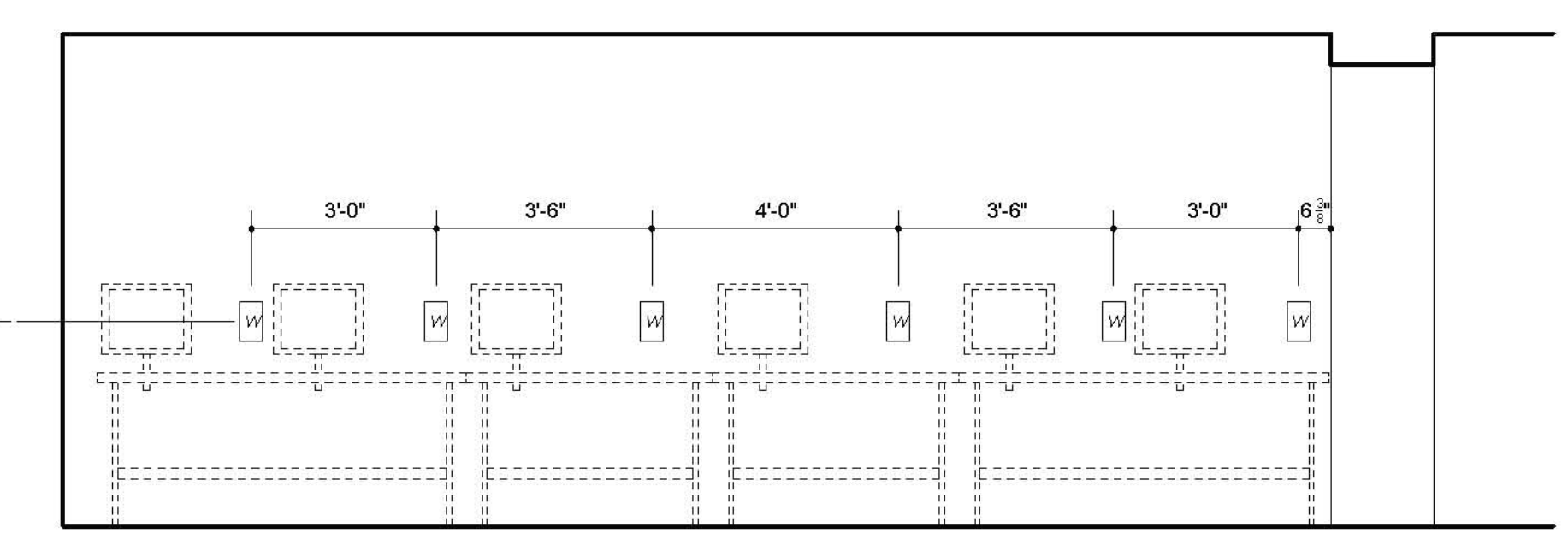
6 CHARTING
ROOM 5108 WEST



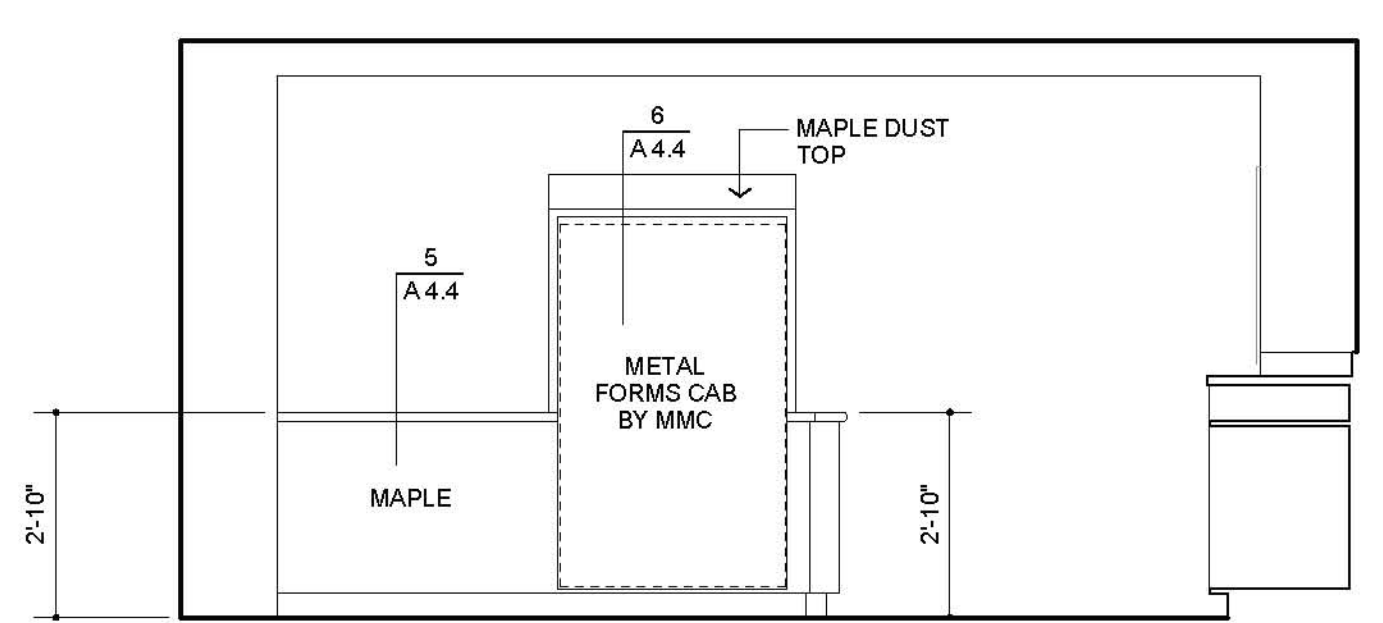
7 CHARTING
ROOM 5142 NORTH



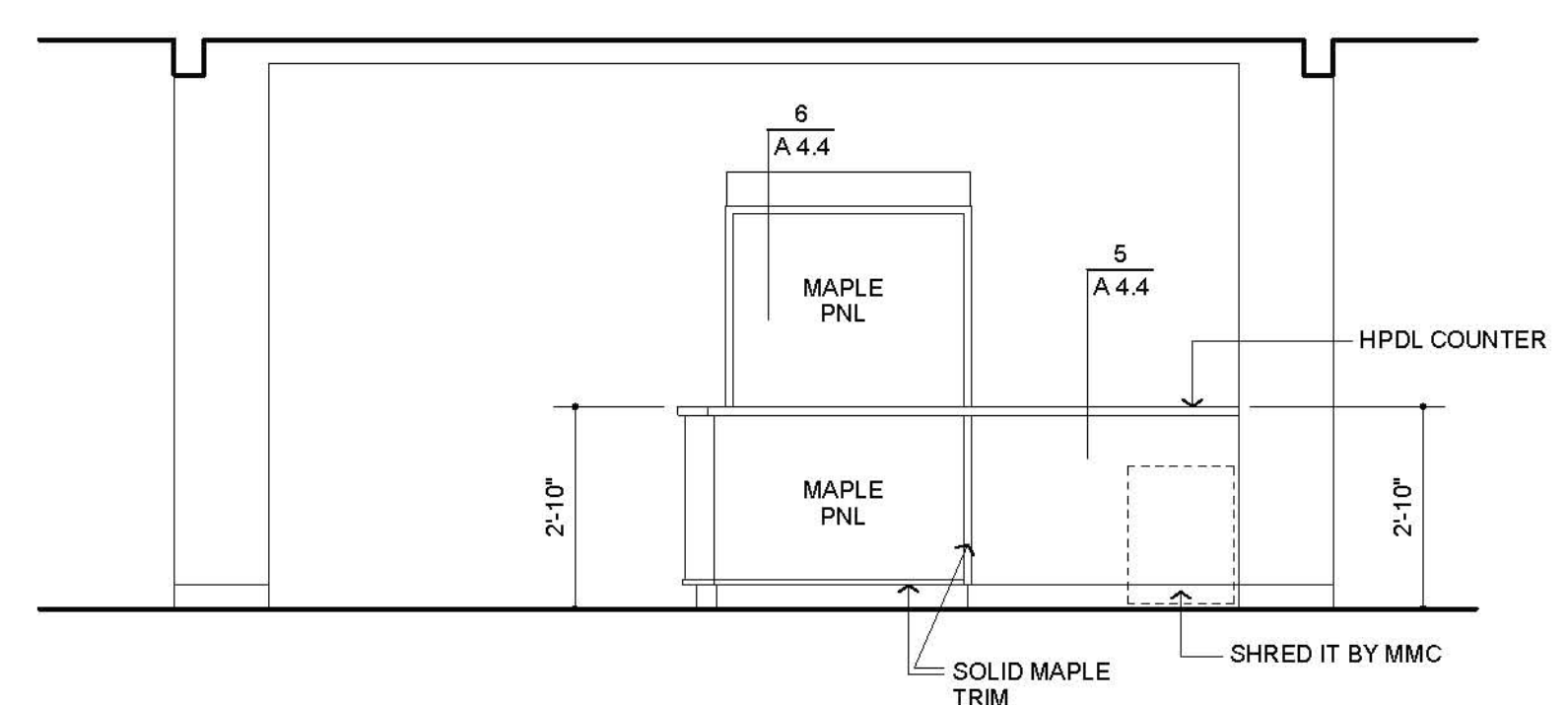
8 CHARTING
ROOM 5142 EAST



9 CHARTING
ROOM 5142 SOUTH



10 CHARTING
ROOM 5142 WEST



11 NURSING STATION
ROOM 5136 SOUTH

- LEGEND**
- CR CARD READER BY SECURITY CONTRACTOR
 - EP EMERGENCY POWER DUPLEX OUTLET
 - D2 DATA OUTLET WITH JACK QTY
 - DPL DUPLEX POWER OUTLET
 - EXDPL EXISTING DUPLEX POWER OUTLET
 - GEL SURFACE MOUNTED GEL SANITIZER DISPENSER FURNISHED BY MMC
 - NC NURSE CALL DEVICE BY ELEC
 - PCH STAINLESS STEEL PHARMACY CASSETTE HOLDER BY MISC METALS
 - SBMB STORAGE BIN MOUNTING BOARD FURNISHED BY OWNER
 - SW LIGHT SWITCH BY ELEC
 - T TELEPHONE OUTLET
 - W WALL PHONE
 - WM SURFACE MOUNTED RACEWAY BY ELEC

Richards Wing
 Fifth Floor
 Renovations

Maine Medical Center
 Portland, Maine 04102

Architect
 Winton Scott Architects, PA
 Portland, Maine

Mechanical Design / Build
 Johnson & Jordan
 Portland, Maine

Interior Elevations

A 3.1

Scale: 3/8" = 1' - 0"
 August 28, 2009