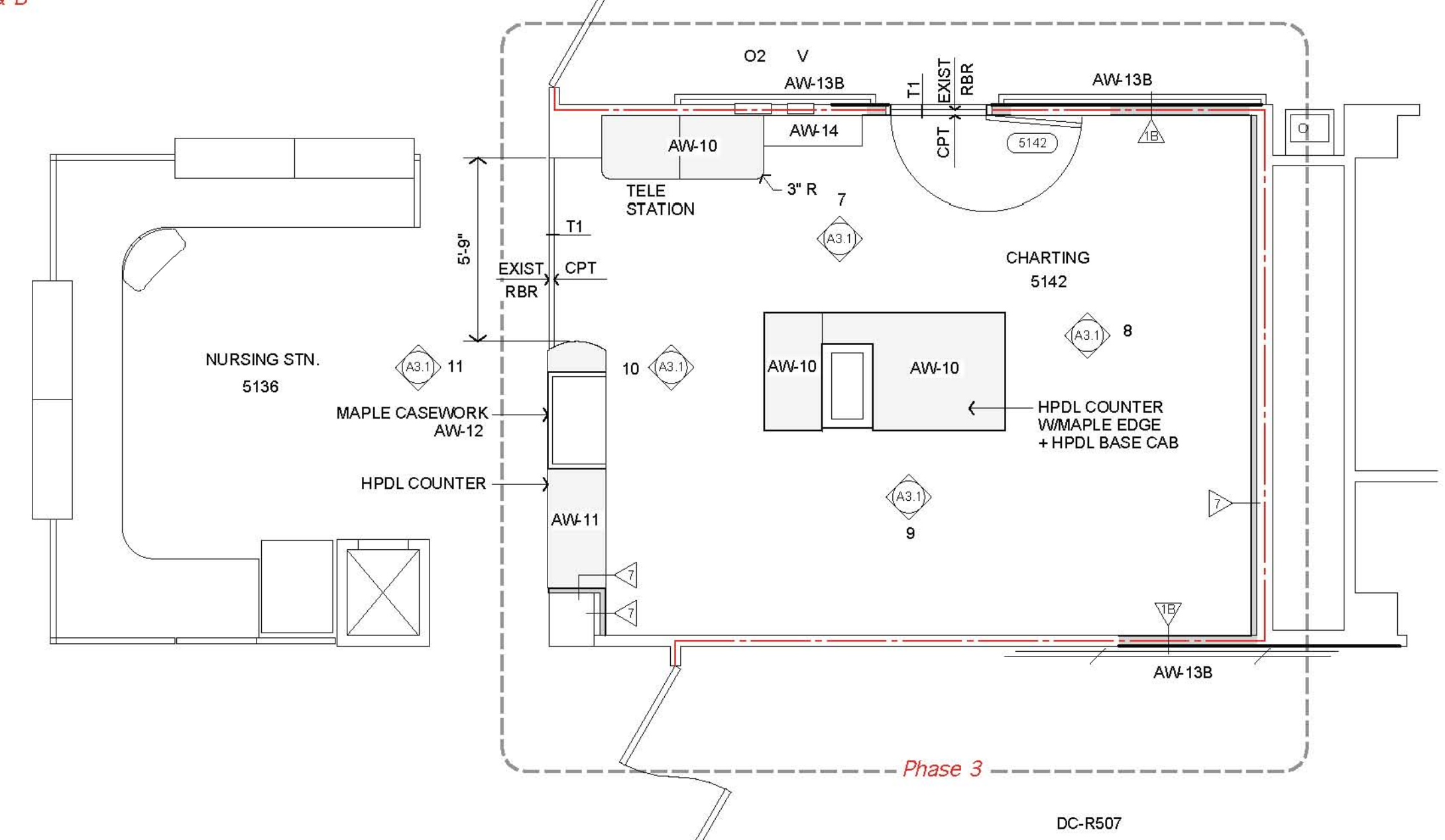
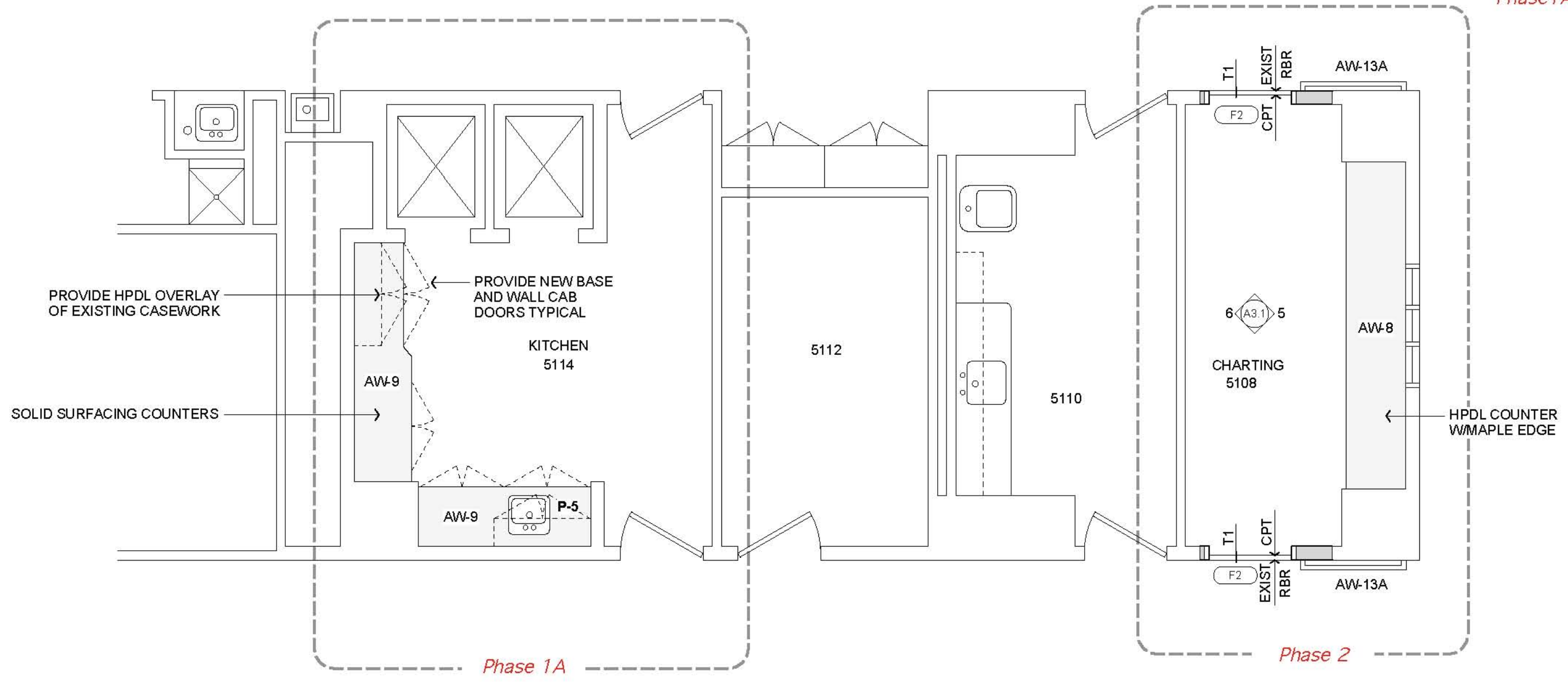
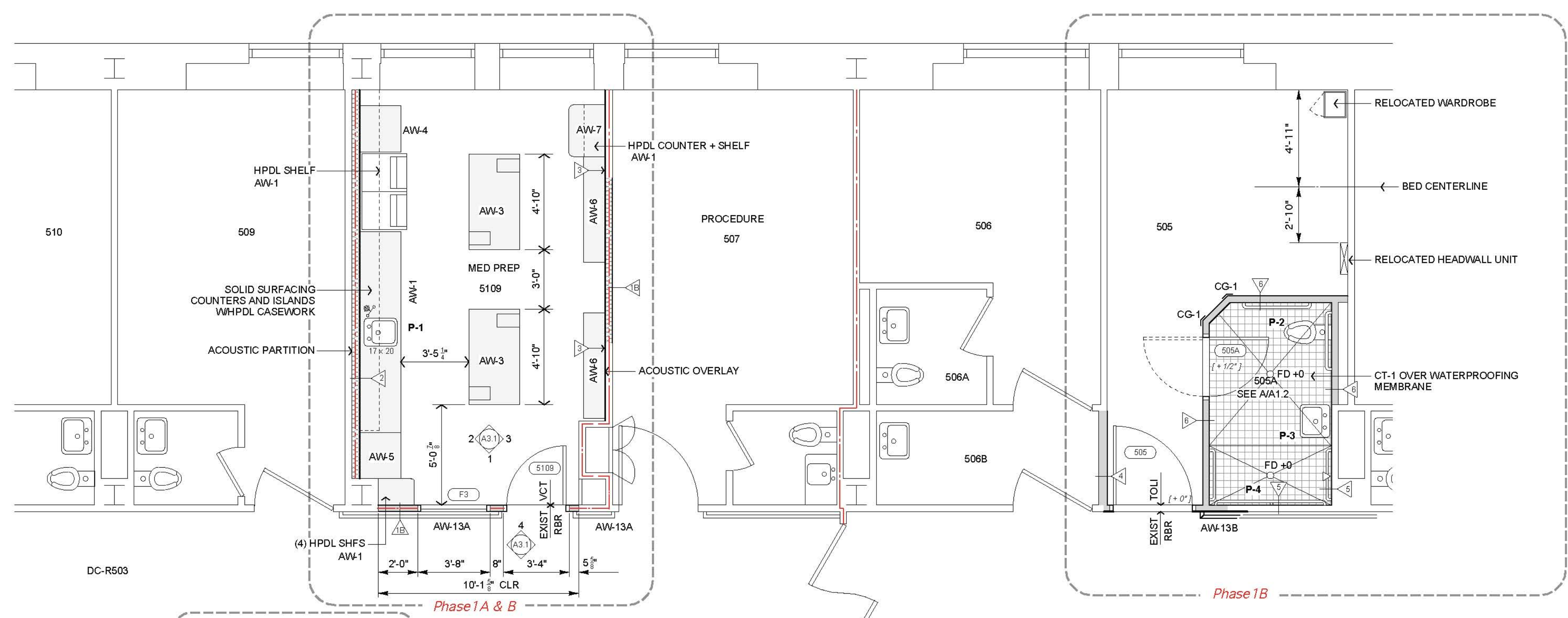


**Plumbing Fixture Schedule**

Key	Item	Description
P1	SINGLE BOWL UTILITY SINK - ADA	ELKAY LRAD-1517, 6 1/2" D CHICAGO FAUCET 895-317CP GUARDIAN G5022BP-HG DECK MOUNTED EYEWASH EMERGENCY MIXING VALVE - LEONARD TA-300-STSTL-REC-VIEW CAB ASSY AND LOCAL VALVE SYMMONS THERMIXER 5-120-CK
P2	H.C. WATER CLOSET	FLOOR MOUNTED 16 1/2" HT / BACK OUTLET FLUSH VALVE - RIGHT HAND A.S. PRIOLO FLOWISE
P3	H.C. LAVATORY - WALL	A.S. LUCERNE 0356.041 CHICAGO FAUCET 895-317CP CONCEALED WALL CARRIER PRE-INSULATED PIPE WRAP KIT
P4	H.C. SHOWER	SYMMONS TEMPOTROL 25-500-B30-X FIXED AND ADJ HAND HELD HEADS
P5	SINGLE BOWL UTILITY SINK	ELKAY LR-1716 CHICAGO FAUCET 895-317CP



- LEGEND**
- ONE HOUR FIRE RATED PARTITION. PROVIDE TIME RATED FIRESTOP AT ALL PENETRATIONS.
  - EXISTING PARTITION
  - EXISTING PARTITION TO BE REMOVED
  - PROPOSED PARTITION

- ARCHITECTURAL WOODWORK LEGEND**
- AW-1 HPDL SHELF ON DBL SLOT STDS AND BRACKETS X QTY NOTED
  - AW-2 SSM COUNTER, COVERED BACKSPASHES, SST SINK, OPEN FRONT HPDL BASE CAB WITH PULL OUT SHELVES WITH HAEFFLE FENCES AT EACH
  - AW-3 SSM COUNTER WITH HPDL OPEN SHELF UNITS BASE
  - AW-4 SSM COUNTER WITH 1 DRW BASE
  - AW-5 SSM COUNTER WITH OPEN HPDL BASE
  - AW-6 FIXED HPDL SHELVES (2) WITH HPDL 8" H BLANK BASE
  - AW-7 WALL HUNG SSM COMPUTER COUNTER WITH HPDL STILES AND UNDERSHELF
  - AW-8 HPDL COUNTER WITH MAPLE CUSTOM SHAPED EDGE ON METAL BRACKETS @ 3'-0" O.C.
  - AW-9 SSM COUNTER ON EXISTING CASEWORK. PROVIDE HPDL OVERLAY FOR EXISTING CASES. PROVIDE NEW DOORS AND DRAWER FRONTS.
  - AW-10 HPDL COUNTER WITH MAPLE CUSTOM SHAPED EDGE ON MAPLE FIXED OPEN SHELF BASE UNITS.
  - AW-11 HPDL COUNTER WITH MAPLE CUSTOM SHAPED EDGE ON MAPLE BASE UNITS.
  - AW-12 OPEN FRONT MAPLE TALL CABINET
  - AW-13A OAK RAIL TYPE A TO MATCH EXISTING
  - AW-13B OAK RAIL TYPE B TO MATCH EXISTING
  - AW-14 METAL STORAGE UNIT BASE

**Overall Floor Plan**  
1/4" = 1'- 0"

**Finish Schedule**

Room #	Floor Mat	Floor Manuf	Floor Product #	Floor Color 1	Floor Color 2	Floor Color 3	Wall Base Mtl	Wall Base Manuf	Wall Base Product #	Wall Paint Color	Trim Paint Color	Wall Accent Color	Wall Protection Mtl	Wall Protection Manuf.	Wall Protection Product #	Ceiling Mat	Ceiling Manuf	Ceiling Product #	Ceiling Grid
<b>Patient Rooms</b>																			
508	SHTV	TOLI	MATURE	761 BEECHWOOD PLANK	-	-	VINYL	JOHNSONITE				TBD	PVC	C/S GROUP ACROVYN	HEADWALL PVC & FOOTWALL VWC 4" H	ACT-1	ARMSTRONG	CIRRUS 2X2 #584	15/16" GRID
<b>Patient Bathrooms</b>																			
508A	ABRASIVE 2X2 CMT and WATERPROOF MEMBRANE WITH FLOOD TEST	AO	TBD	TBD								TBD	6X6 CT FULL HEIGHT	TBD	TBD	ACT-2	ARMSTRONG	CERAMAGUARD 2X2 #607	15/16" ALUM GRID
<b>Support Rooms</b>																			
5108	CHARTING	CPT	C & A	BAUHAUS	HENRI		VINYL	JOHNSONITE				TBD	-	-	-	ACT-1	ARMSTRONG	CIRRUS 2X2 #584	EXISTING GRID
5109	MED PREP	VCT	ARMSTRONG	IMPERIAL TEXTURE			VINYL	JOHNSONITE				TBD	-	-	-	ACT-1	ARMSTRONG	CIRRUS 2X2 #584	15/16" GRID
5114	KITCHEN	EXIST VCT					EXIST VINYL					TBD	-	-	-	EXISTING ACT			
5142	CHARTING	CPT	C & A	BAUHAUS	HENRI		VINYL	JOHNSONITE				TBD	-	-	-	ACT-1	ARMSTRONG	CIRRUS 2X2 #584	15/16" GRID

Richards Wing  
Fifth Floor  
Renovations  
Maine Medical Center  
Portland, Maine 04102  
Architect  
Winton Scott Architects, PA  
Portland, Maine

Mechanical Design / Build  
Johnson & Jordan  
Portland, Maine

Floor Plan  
**A 1.1**

Scale: 1/4" = 1' - 0"  
August 28, 2009