

GE EQUIPMENT LISTING

EQUIPMENT ON ORDER FROM GE HEALTHCARE, INSTALLED BY GE HEALTHCARE, PER GON 2770927 DATED 02-23-09

NOTE: LOCAL CONDITIONS MAY DICTATE THAT ITEMS IDENTIFIED IN THIS CATEGORY BE INSTALLED BY OTHERS.

EQUIPMENT CROSS REFERENCE CHART
 P = PRE-APPROVAL
 C = CALCULATIONS/PENDING APPROVAL
 S = SPECIFICATIONS ONLY

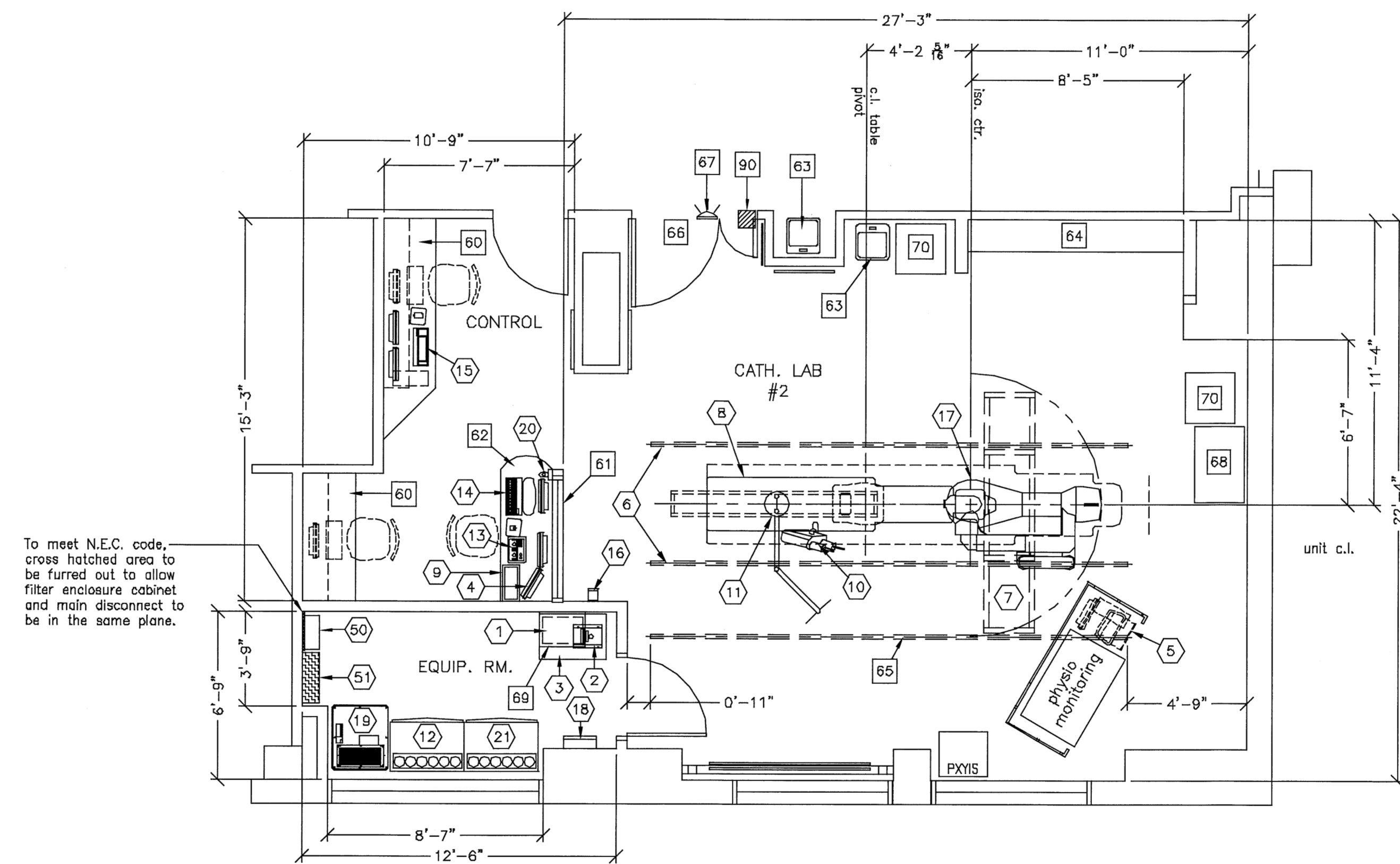
ITEM NO.	QUANTITY ORDERED	REFER TO SHEET "D"	ITEM DESCRIPTION (* = EXISTING/REINSTALL)	WEIGHT	HEAT OUTPUT (PER HOUR)	DETAIL NO.	STRUC PLAN	ELEC PLAN
1	1		INJECTOR ELECTRONICS	37 lbs	320 btu	B5028	---	IE S
2	1		DETECTOR CHILLER	33 lbs	706 btu	B5049F	---	DC S
3	1		WATER CHILLER	449 lbs	18716 btu	M0917B	---	CHLR C
4	1		18 IN. MONITOR ON DESK	17 lbs	204 btu	C7617	---	WBM2 C
5	1		EVUS VOLCANO READY KIT	-	-	B551	-	-
6	2		LONGITUDINAL STATIONARY RAIL FOR XT SUSPENSION	68 lbs	-	B2007B	-	-
7	1		FOUR LCD MONITOR SUSPENSION ON 9 FT. 6 IN. XT INBOARD BRIDGE	485 lbs	1157 btu	B2004 B2010A	---	WBM1 C
8	1		OMEGA IV/V TABLE WITH ROTATING TOP	1300 lbs	614 btu	B5037	B5049M	LUS C
9	1		REMOTE CONTROL FOR INJECTOR	4 lbs	-	B5028	-	IEC S
10	1		INJECTOR HEAD ON TABLE RAIL	15 lbs	-	B5030A	---	IH S
11	1		COUNTERBALANCED EYE AND THYROID SHIELD	121 lbs	-	B5031D	B5031F	S C
12	1		ATLAS CABINET (C2)	568 lbs	1825 btu	B0558C	S100	C2 C
13	1		CONTROL ROOM MONITOR WITH DL KEYPAD	19 lbs	204 btu	C7412H C7617	---	S C
14	1		OPERATORS CONSOLE	22 lbs	546 btu	C7617 C7502 B5050C	-	WBC1 C
15	1		AW WORKSTATION	81 lbs	1201 btu	M1013AK C7617	---	-
16	1		XR BUZZER (LOCATED ABOVE CEILING)	2 lbs	-	B5190H	---	XR2 -
17	1		INNOVA POSITIONER (REFERENCE TABLE BASE-PLATE DETAIL FOR FLOOR MOUNTING INFORMATION)	1653 lbs	2416 btu	B5050A B5050B B5050	---	LC1 C
18	1		UPS INTERFACE BOX	-	-	E4502E	-	UI3 -
19	1		UPS CABINET	1170 lbs	6750 btu	E4502SC	---	UPS -
20	1		BOLUS CHASE HANDSWITCH	2 lbs	-	---	---	WB3C -
21	1		ATLAS CABINET (C1)	998 lbs	3389 btu	B0558C	S100	C1 C

SCALE: 1/4" = 1'-0"

EQUIPMENT LAYOUT

EXISTING CEILING HEIGHT = 9'-6"

This equipment layout indicates the placement and interconnection of the indicated equipment components. There may be federal, state, and/or local requirements that could impact the placement of these components. It remains the Customer's responsibility for ensuring the site and final equipment placement complies with all applicable federal, state, and/or local requirements.



To meet N.E.C. code, cross hatched area to be furred out to allow filter enclosure cabinet and main disconnect to be in the same plane.

THE FOLLOWING ITEMS, WHICH HAVE BEEN ORDERED FROM GE HEALTHCARE, ARE TO BE INSTALLED BY THE CUSTOMER OR HIS CONTRACTOR.

22	1		FILTER ENCLOSURE	90 lbs	-	S1875PC	-	FE -
23	1		INNOVA MAIN DISCONNECT, REFERENCE JUNCTION POINT 'A' ON SHEET E1 FOR DETAILED DESCRIPTION.	275 lbs	1532 btu	E4502AE	-	A -

ANCILLARY ITEMS

CUSTOMER/CONTRACTOR SUPPLIED AND INSTALLED ITEMS

ITEM NO.	ITEM DESCRIPTION (* INDICATES EXISTING)
60	COUNTER TOP WITH WALL CABINETS
61	CONTROL WALL TO CEILING WITH LEAD GLASS VIEWING WINDOW.
62	COUNTER TOP FOR EQUIPMENT- PROVIDE GROMMETED OPENINGS AS REQUIRED TO ROUTE INTERCONNECT CABLES TO RACEWAY BELOW COUNTERTOP.
63	SCRUB SINK
64	CATHETER CABINETS
65	CABLE DRAPE RAIL.
66	MINIMUM DOOR OPENING FOR EQUIPMENT DELIVERY IS 44 IN. W x 83 IN. H (118mm x 2108mm), CONTINGENT ON A 96 IN. (2438mm) CORRIDOR WIDTH
67	X-RAY ON WARNING LIGHT - AVAILABLE FROM GE SUPPLY CALL # 800-800-9760 GE CAT. NO. WX1ABW-DF-XIU
68	CUSTOMER SUPPLIED STORAGE CABINET
69	SHELF FOR INJECTOR ELECTRONICS
70	MISC. EQUIPMENT

THE FOLLOWING ITEMS ARE AVAILABLE FROM GE HEALTHCARE TECHNOLOGIES. CONTACT YOUR LOCAL GE HEALTHCARE SERVICE REPRESENTATIVE FOR PRICING AND AVAILABILITY.

69 X-RAY ROOM WARNING LIGHT/ROOM LIGHTING CONTROL PANEL REFERENCE JUNCTION POINT 'XRLC' ON SHEET 'E1' FOR DETAILED DESCRIPTION -CAT. NO. E4502SS FOR WARNING LIGHT & ROOM LIGHT CONTROL.

GENERAL SPECIFICATIONS

- THE REQUIRED CEILING HEIGHT INDICATED ON THESE PLANS IS TO ENSURE EQUIPMENT FUNCTION IS NOT INHIBITED. CONSULT WITH YOUR LOCAL GEHC INSTALLATION SPECIALIST REGARDING ACCEPTABILITY OF OTHER CEILING HEIGHTS.
- CHECK ALL DOOR OPENINGS AND HALLWAYS FROM DELIVERY LOCATION TO WHERE EQUIPMENT IS TO BE INSTALLED TO ENSURE THE ROUTE PHYSICALLY AND STRUCTURALLY WILL ACCOMMODATE THE EQUIPMENT AS SHIPPED.
- RADIATION PROTECTION REQUIREMENTS ARE NOT INDICATED ON THIS PLAN. WHERE NEEDED PER NATIONAL OR LOCAL CODE THEY SHALL BE SPECIFIED BY A QUALIFIED RADIOLOGICAL PHYSICIST.
- THE DEVELOPMENT OF THE EQUIPMENT LAYOUT, ROOM DIMENSIONS, MECHANICAL AND ELECTRICAL SUGGESTIONS IS PREDICATED UPON THE BEST INFORMATION OBTAINABLE FROM THE SITE, COUPLED WITH THE CUSTOMER'S KNOWN DESIRES. ARCHITECTURAL OR ELECTRICAL CHANGES INCLUDING RELOCATION OF EQUIPMENT ILLUSTRATED ON THIS DRAWING IS ALLOWED ONLY WITH NOTIFICATION, IN WRITING, AND REVIEW BY GEHC SERVICE DEPARTMENT. EQUIPMENT OPERATION, SERVICEABILITY, AND RESTRICTING CABLE LENGTHS, ETC., MAKE THIS ESSENTIAL FOR A PROPER INSTALLATION. GEHC RESERVES THE RIGHT TO MAKE ON THE JOB CHANGES BECAUSE OF CUSTOMER REQUIREMENTS AND/OR OBSTACLES IN CONSTRUCTION, ETC..
- ALL WORK TO BE IN COMPLIANCE WITH NATIONAL AND LOCAL BUILDING SAFETY CODES.
- DIMENSIONS ARE TO FINISHED SURFACES OF ROOM

SITE ENVIRONMENT SPECIFICATIONS

- EQUIPMENT ROOM AMBIENT OPERATING TEMPERATURE: 55 TO 75 DEGREES (F), MAXIMUM ALLOWABLE TEMPERATURE CHANGE OF 15 DEGREES (F)/HOUR, WITH 20% - 75% HUMIDITY.
- EXAM ROOM AMBIENT OPERATING TEMPERATURE: 55 TO 75 DEGREES (F), MAXIMUM ALLOWABLE TEMPERATURE CHANGE OF 15 DEGREES (F)/HOUR, HUMIDITY: 10% - 70%
- CONTROL ROOM AMBIENT OPERATING TEMPERATURE: 59 TO 75 DEGREES (F), MAXIMUM ALLOWABLE TEMPERATURE CHANGE OF 15 DEGREES (F)/HOUR, HUMIDITY: 30% - 80%
- ALTITUDE: NOT TO EXCEED 8,000 FT. ABOVE SEA LEVEL.
- DO NOT RESTRICT THE AIR INTAKE AT THE LOWER FRONT OR AIR EXHAUST AT THE TOP OF THE ELECTRONICS CABINETS.

MAGNETIC INTERFERENCE SPECIFICATIONS

IMAGE INTENSIFIERS MUST BE LOCATED IN AMBIENT STATIC MAGNETIC FIELDS OF LESS THAN 1 GAUSS TO GUARANTEE SPECIFIED IMAGING PERFORMANCE.
 X-RAY TUBES MUST BE LOCATED IN AMBIENT STATIC MAGNETIC FIELDS OF LESS THAN 10 GAUSS TO GUARANTEE SPECIFIED PERFORMANCE.
 SYSTEM ELECTRONICS MUST BE LOCATED IN AMBIENT STATIC MAGNETIC FIELDS OF LESS THAN 10 GAUSS TO GUARANTEE DATA INTEGRITY.
 OPERATORS CONSOLE EQUIPMENT MUST BE LOCATED IN AMBIENT STATIC MAGNETIC FIELDS OF LESS THAN 10 GAUSS TO OBTAIN SPECIFIED GEOMETRIC LINEARITY.

SHEET TITLE: EQUIPMENT LAYOUT
 MODALITY TYPE: INNOVA 3100

PROJECT TITLE: ROOM NO. CATH LAB 2
 MAINE MEDICAL CENTER
 PORTLAND, MAINE

PROJECT: 090498
 REVISION: 00
 DATE: 02-27-09
 DRAWN BY: TST
 CHECKED BY: TST
 GON NO: 2770927
 GON DT: 02-23-09

REVISION HISTORY:

SHEET
 A1

Drawn by: Tim Taylor Octet no.: 5603739
 GE Installation
 Project Manager: TIM MODUN
 Telephone no.: 415-305-5703

This drawing is based on Sketch No.: Option 4 B8-09009 1jm2

PIM R9

GE Healthcare
 Installation Services - Design Center
 Waukesha, Wisconsin

THIS PLAN IS SUBMITTED TO SUGGEST LOCATION OF GE HEALTHCARE EQUIPMENT AND ASSOCIATED APPARATUS, ELECTRICAL WIRING DETAILS, AND ROOM ARRANGEMENTS. THE CUSTOMER'S RESPONSIBILITY IS TO CONDUCT THE NECESSARY SURVEY AND TO OBTAIN ALL NECESSARY PERMITS AND APPROVALS FOR THE ACTUAL CONSTRUCTION PURPOSES. HOWEVER, THE COMPANY CANNOT ACCEPT RESPONSIBILITY FOR ANY DAMAGES RESULTING THEREFROM.