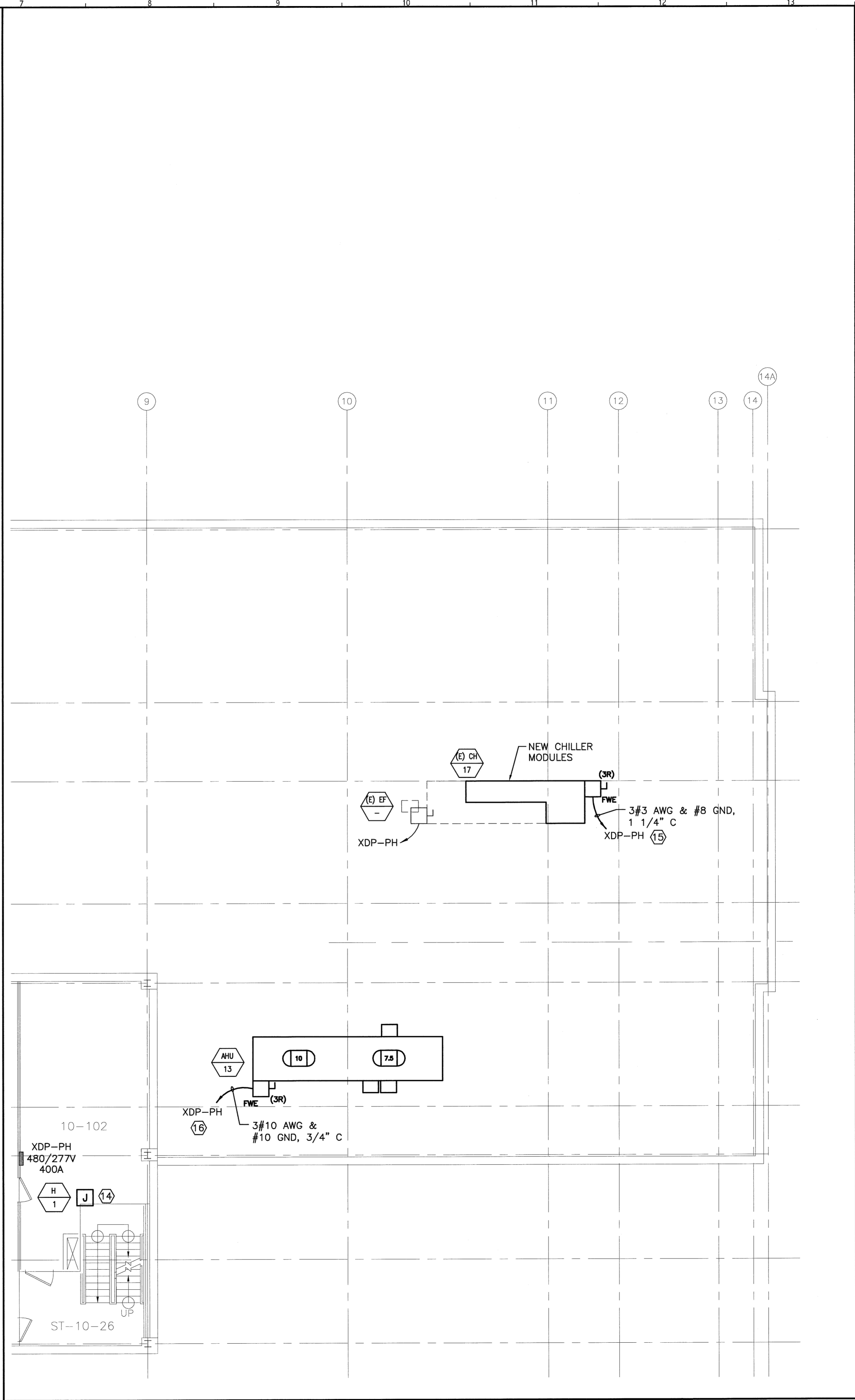


**A1 FLOOR PLAN**  
1/4"=1'-0"



**A7 ROOF PLAN**  
1/8"=1'-0"

**NOTES:**

1. SEE SHEET E-001 FOR LEGEND AND GENERAL NOTES.
2. REFER TO GE HEALTHCARE PLANS FOR ADDITIONAL INFORMATION REGARDING CONDUITS, DUCTS, DUCT OPENINGS, GROMMET MATERIAL, JUNCTION BOXES, INTERCONNECTIONS, AND ALL OTHER ELECTRICAL RELATED DETAILS.
3. ALL DEVICES ARE EXISTING TO REMAIN UNLESS NOTED OTHERWISE.

**KEYED NOTES:**

- ① EXISTING 24"x24"x12" FLOOR BOX W/ 2-6" AND 4-1" DIAMETER LOCKNUTS AND 12"x12"x6" FLOOR BOX W/ 1-6" AND 4-1" DIAMETER BUSHINGS. GE ITEM "LC1"
- ② FURNISH & INSTALL AN 18"x18"x6" JUNCTION BOXES BELOW FLOOR AND ABOVE CEILING CONNECTED BY A 10"x3-1/2" VERTICAL RISER DUCT.
- ③ EXISTING 12"x12"x6" JUNCTION BOX W/ 2-6" DIAMETER LOCKNUTS. GE ITEM "LUS"
- ④ FURNISH & INSTALL A 10"x3-1/2" SURFACE WALL DUCT W/ MINIMUM 2 DIVIDERS AND A 12"x12"x6" FLOOR BOX ABOVE CEILING. SURFACE WALL DUCT TO BE RUN FROM FLOOR LINE TO JUNCTION BOX ABOVE CEILING.
- ⑤ EXISTING RECEPTACLES TO BE REMOVED AND REPLACED WITH NEW HOSPITAL GRADE RECEPTACLES. FIELD VERIFY THAT REDUNDANT GROUNDING IS PROVIDED PER NEC ARTICLE 517 FOR PATIENT CARE AREAS.
- ⑥ FURNISH & INSTALL A 10"x3-1/2" HORIZONTAL SURFACE WALL DUCT W/ MINIMUM OF 2 DIVIDERS. COORDINATE MOUNTING HEIGHT WITH GE EQUIPMENT INSTALLER.
- ⑦ FURNISH & INSTALL A 4"x2" SURFACE WALL DUCT W/ MIN. 2 DIVIDERS. PROVIDE 3"x3" OPENING IN DUCT COVER WITH GROMMET MATERIAL FOR CONNECTIONS TO GE ITEM "UIB".
- ⑧ GE ITEM "A". INSTALL 150A MAIN DISCONNECT PANEL FURNISHED BY GE HEALTHCARE. PROVIDE NEW (4#1/0 AWG & #1/0 GND, 2"C) FEEDER FROM ITEM "FE" AS INDICATED ON GE HEALTHCARE PLANS.
- ⑨ GE ITEM "FE". INSTALL FILTER ENCLOSURE PANEL FURNISHED BY GE HEALTHCARE. EXTEND EXISTING 150A FEEDER FROM EXISTING PANELBOARD "XDP-8".
- ⑩ FURNISH & INSTALL AN 18"x3-1/2" VERTICAL SURFACE WALL DUCT W/ MIN. 2 DIVIDERS. SEE GE DRAWINGS FOR DUCT ELEVATIONS.
- ⑪ GE ITEM "UPS". PROVIDE 6' LENGTH OF 2" FLEXIBLE CONDUIT AND CONNECTORS AND 8"x8" OPENING IN DUCT COVER WITH GROMMET MATERIAL. COORDINATE WITH GE EQUIPMENT INSTALLER FOR EXACT LOCATION OF OPENING.
- ⑫ GE ITEMS "C1" AND "C2". PROVIDE 8"x8" OPENINGS IN DUCT COVER WITH GROMMET MATERIAL. COORDINATE WITH GE EQUIPMENT INSTALLER FOR EXACT LOCATION OF OPENINGS.
- ⑬ EXISTING MULTI USE SERVICE PEDESTAL TO REMAIN.
- ⑭ EXTEND EXISTING 120V CONNECTION TO NEW HUMIDIFIER LOCATED ONE FLOOR BELOW LOCATION SHOWN. COORDINATE W/ EQUIPMENT INSTALLER FOR EXACT LOCATION OF ELECTRICAL CONNECTION.
- ⑮ FURNISH AND INSTALL A NEW 100A, 3P CIRCUIT BREAKER IN EXISTING PANELBOARD XDP-PH PREPARED SPACE TO FEED NEW MODULES BEING ADDED TO EXISTING CHILLER. SHORT CIRCUIT RATING TO MATCH THAT OF EXISTING CIRCUIT BREAKERS INSTALLED IN XDP-PH.
- ⑯ FURNISH AND INSTALL A NEW 40A, 3P CIRCUIT BREAKER IN EXISTING PANELBOARD XDP-PH PREPARED SPACE TO FEED NEW AIR HANDLER. SHORT CIRCUIT RATING TO MATCH THAT OF EXISTING CIRCUIT BREAKERS INSTALLED IN XDP-PH.
- ⑰ FURNISH & INSTALL A 6"x6"x4" JUNCTION BOX WITH TWO 2-1/2" DIAMETER CHASE NIPPLES MOUNTED 12" AFF TO CENTER OF BOX FOR GE ITEMS "CHLR" AND "DC".
- ⑱ FURNISH & INSTALL A 6"x6"x4" JUNCTION BOX WITH A 2-1/2" DIAMETER CHASE NIPPLE FOR GE ITEM "IE".
- ⑲ EMERGENCY STOP PUSH BUTTON STATION. GE ITEMS "RDS1" AND "RDS2". PROVIDE SINGLE GANG JUNCTION BOX WITH 1/2" CONDUIT ROUTED TO GE ITEM "A". WIRING TO BE 3/2 AWG & #12 GND, 3/4"C.
- ⑳ FURNISH & INSTALL A 6"x6"x4" FLUSH MOUNT CEILING JUNCTION BOX WITH 1/2" DIAMETER CHASE NIPPLE AND 1/2" CONDUIT ROUTED TO CONSOLE POWER STRIP. GE ITEM "XRB".
- ㉑ EXISTING WARNING LIGHT AND CONTROLLER LOCATION ABOVE CEILING. RECONNECT TO EXISTING 120V POWER AND ROUTE 1/2" CONDUIT TO ROOM LIGHT SWITCHES AND GE ITEM "C1" FOR TABLE REMOTE CONTROL FOOTSWITCH. WIRING TO BE 3/2 AWG & #12 GND.
- ㉒ EXISTING 12"x12"x6" FLUSH CEILING JUNCTION BOX TO BE MAINTAINED AND MODIFIED IF NECESSARY FOR NEW CEILING INSTALLATION. GE ITEM "WBM1"
- ㉓ CONNECT THE EXISTING CRITICAL RECEPTACLE BRANCH CIRCUIT SERVING THE AREA TO NEW RECEPTACLES SHOWN.
- ㉔ CONNECT THE EXISTING NORMAL RECEPTACLE BRANCH CIRCUIT SERVING THE AREA TO NEW RECEPTACLES SHOWN.
- ㉕ PROVIDE 15A, 2P CIRCUIT BREAKER IN EXISTING PANELBOARD LP-8-2 PREPARED SPACE TO FEED NEW BLOWER COIL UNIT. SHORT CIRCUIT RATING TO MATCH THAT OF EXISTING CIRCUIT BREAKERS INSTALLED IN LP-8-2.
- ㉖ FURNISH & INSTALL A 18"x3-1/2" HORIZONTAL SURFACE WALL DUCT W/ MINIMUM OF 2 DIVIDERS. COORDINATE MOUNTING HEIGHT WITH GE EQUIPMENT INSTALLER.

144 Fox Street, P.O. Box 618  
Portland, Maine 04104  
Tel: (207) 772-3846  
Fax: (207) 772-1070  
www.smartinc.com

ARCHITECTURE  
ENGINEERING  
PLANNING  
INTERIOR DESIGN  
COMMISSIONING

**SMART**

PROJECT NORTH

STATE OF MAINE  
DANIEL J. THIBBETTS  
NO. 9838  
LICENSED PROFESSIONAL ENGINEER  
3/30/09

Maine Medical Center  
Cath Lab #2 Reno  
PORTLAND, ME

ISSUED FOR CONSTRUCTION  
3-30-09

REV	DESCRIPTION	DATE
0	ISSUED FOR CONSTRUCTION	3-30-09

GRAPHIC SCALE:  
0' 1'

SCALE: AS NOTED

PROJECT MANAGER: KD  
IC/DRAWN BY: CDS  
A/E OF RECORD: DJT  
CAD FILE: E-102-09009  
PROJECT NO: 09009  
DATE: 3-30-09  
SHEET TITLE:

ELECTRICAL POWER PLANS

SHEET No. **E-102**  
© SMART INC. 2008 088 002