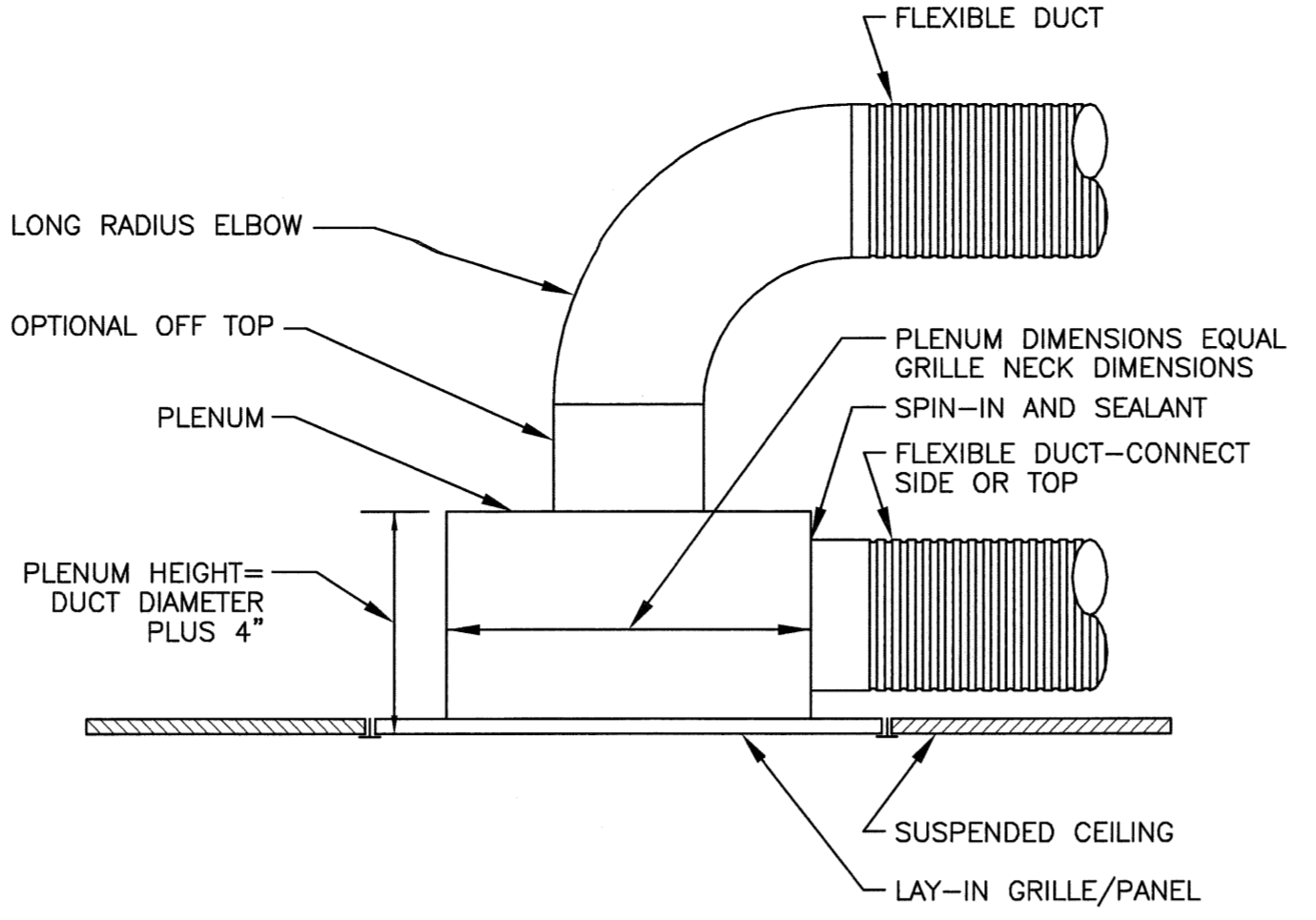


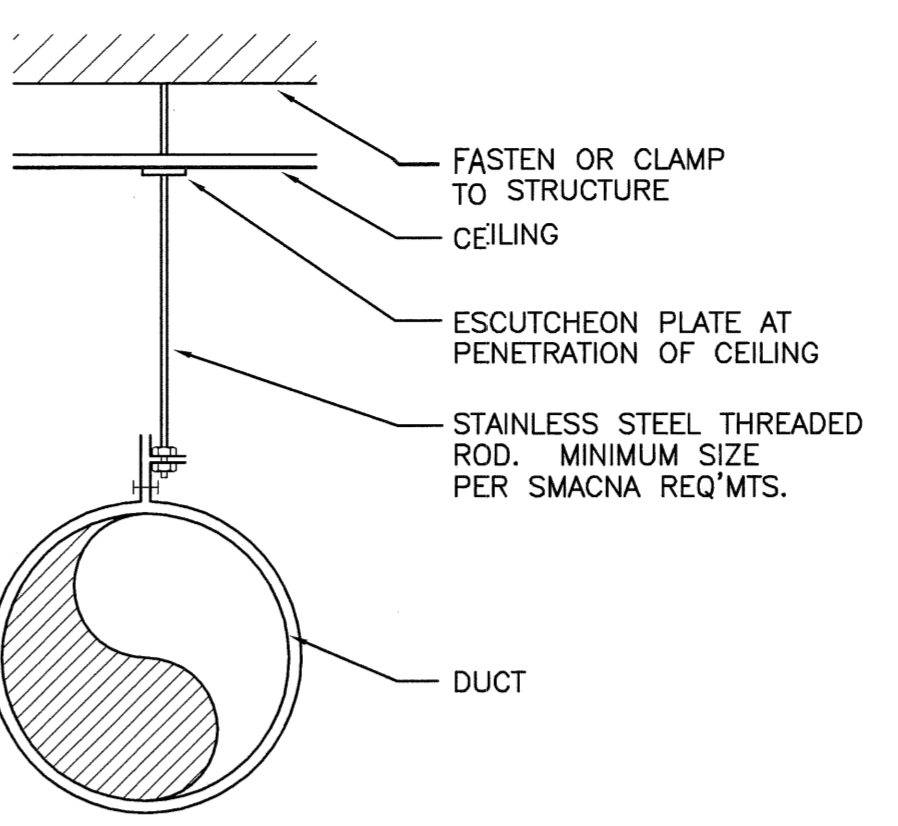
K1 FLEXIBLE DUCT

NOT TO SCALE



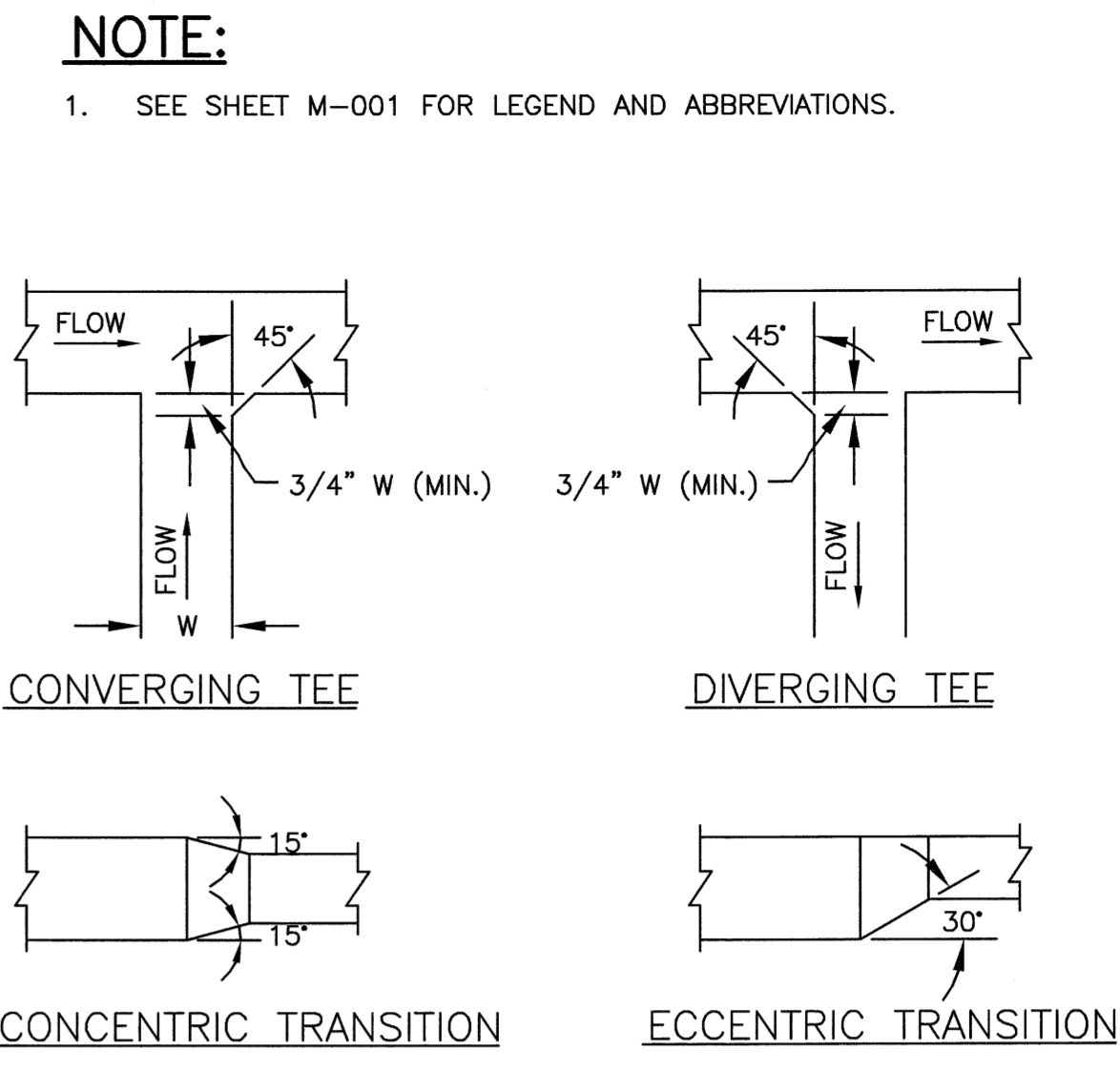
K5 TYP. RETURN & TRANSFER GRILLE PLENUM

NOT TO SCALE



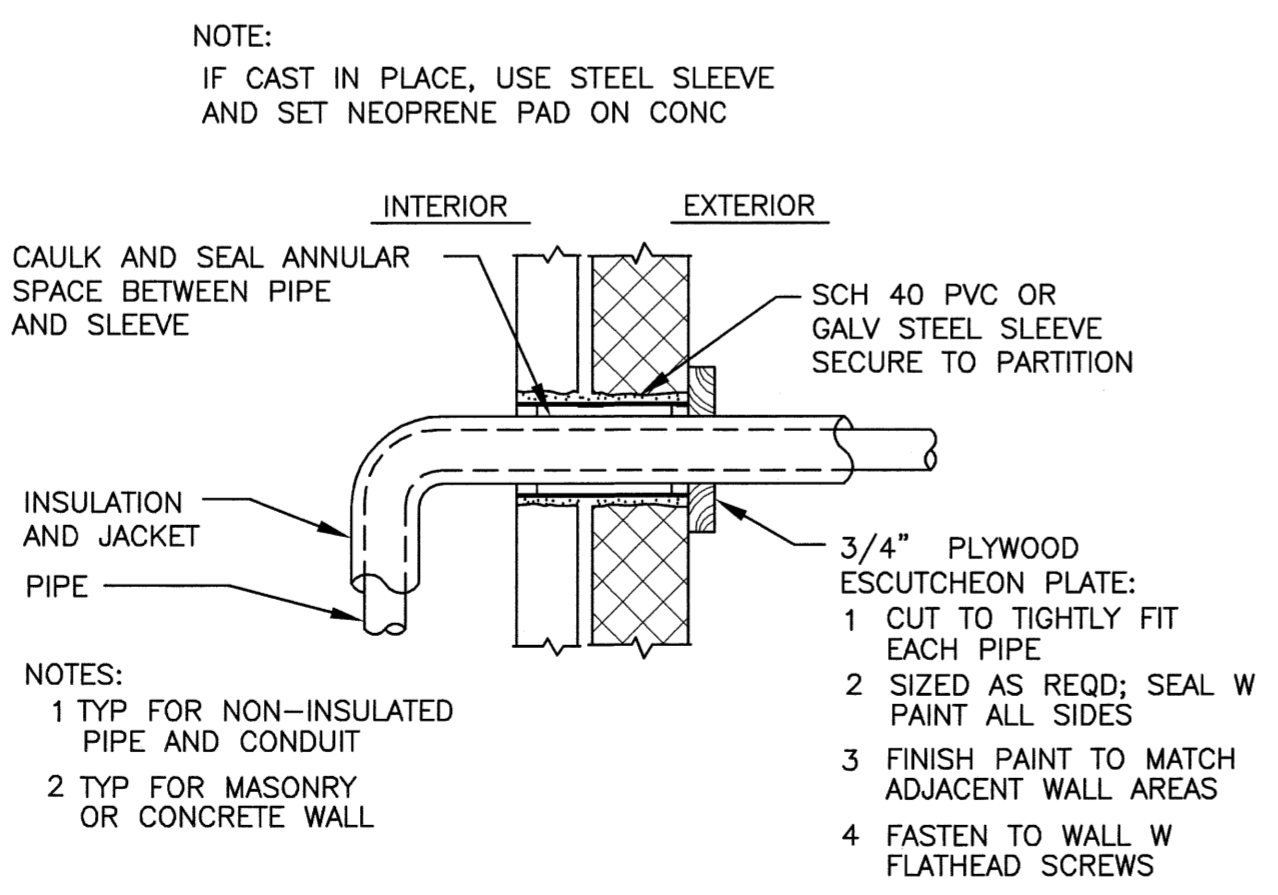
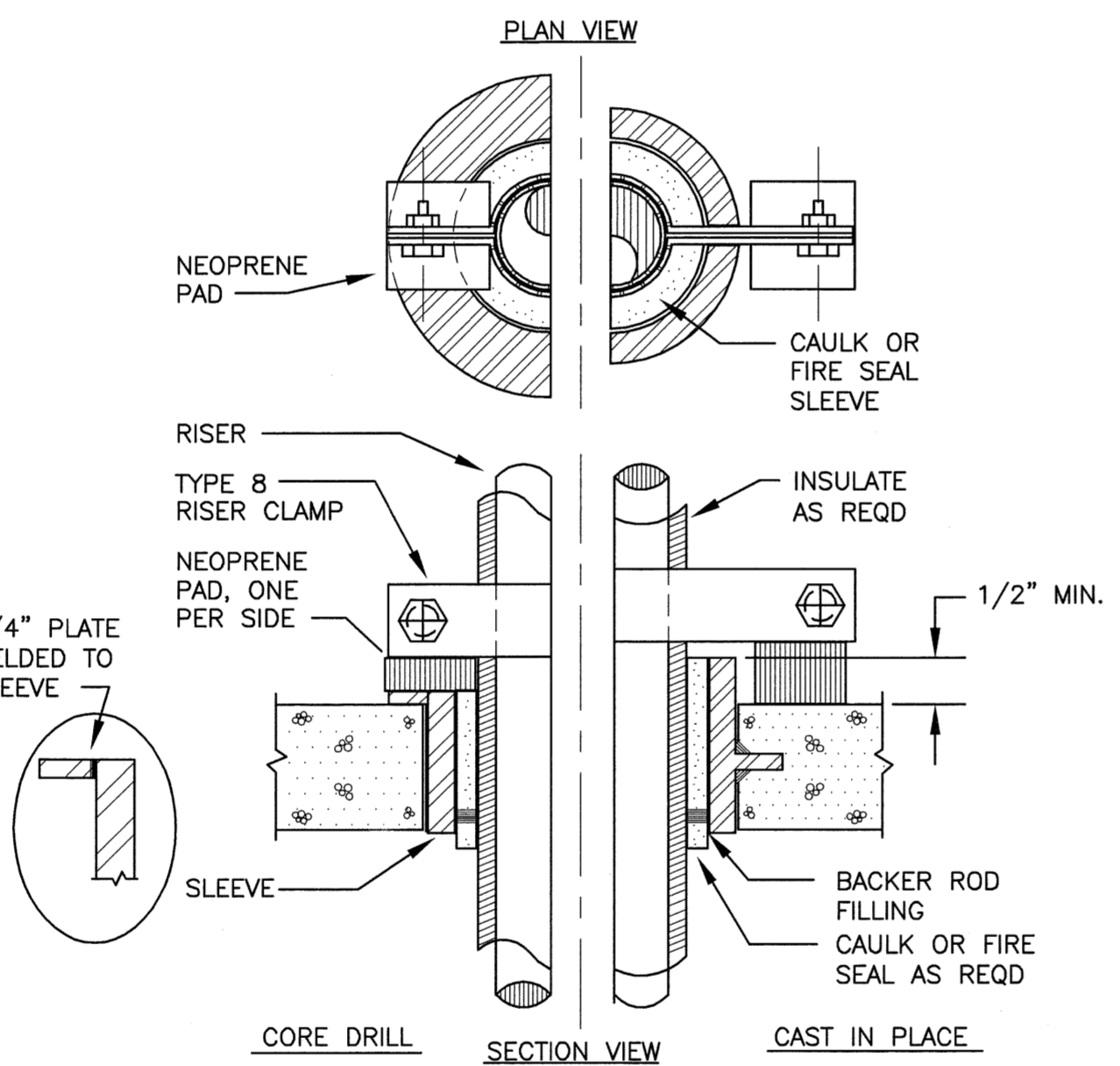
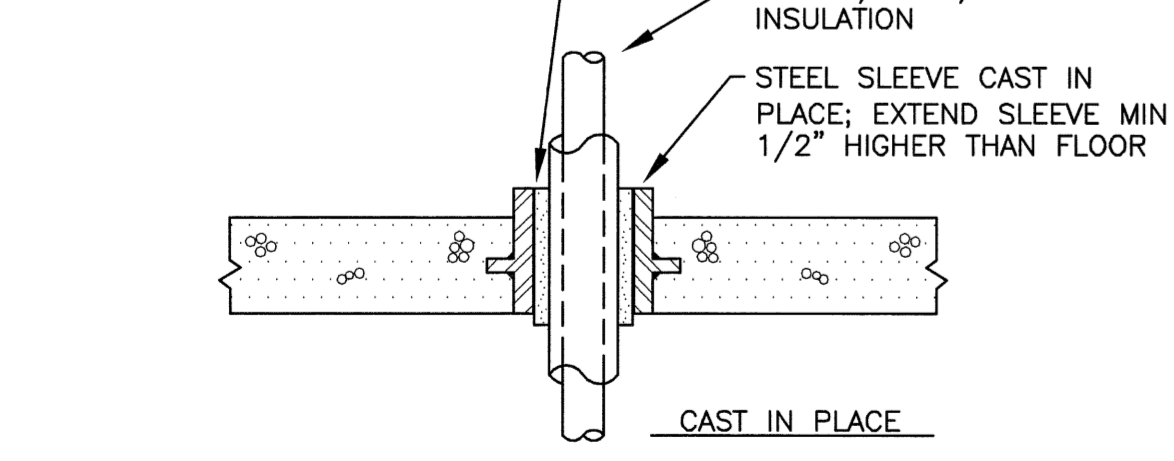
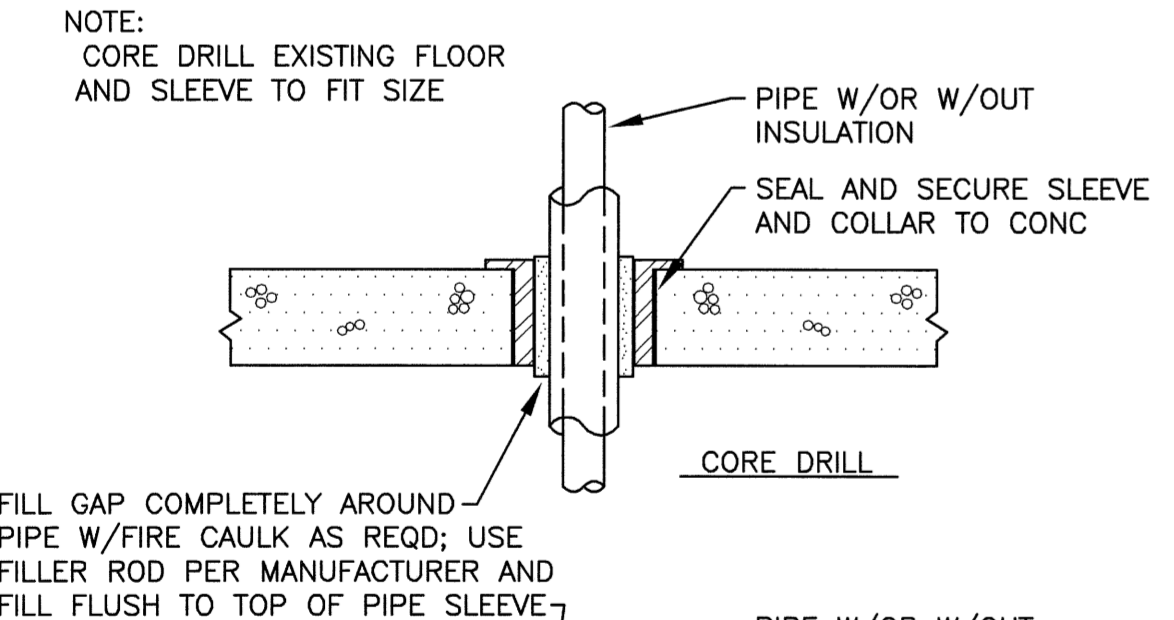
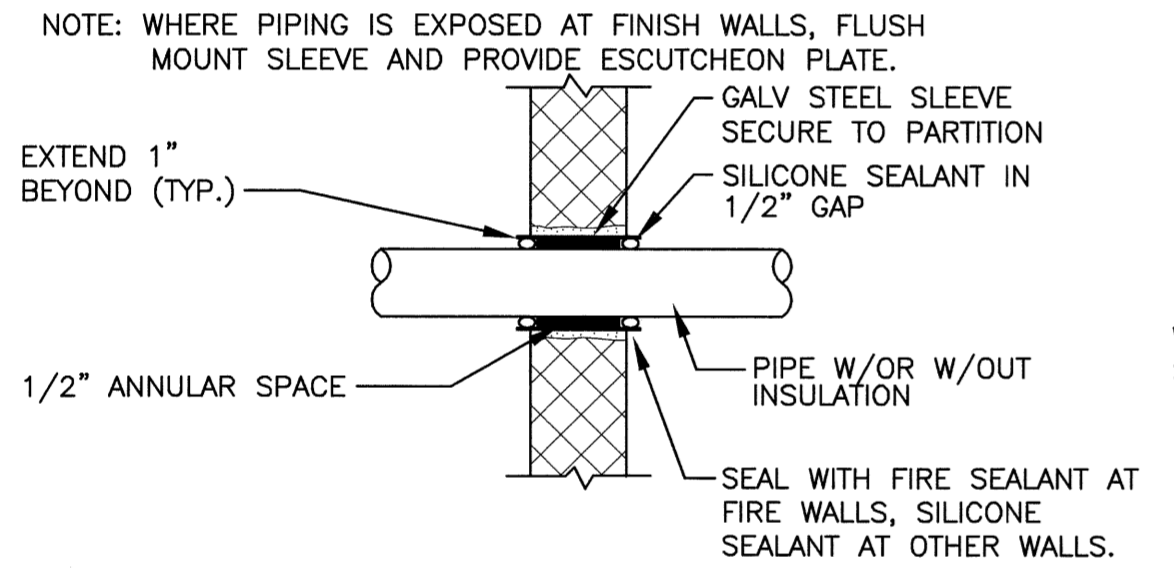
K11 DUCT HANGER

NOT TO SCALE



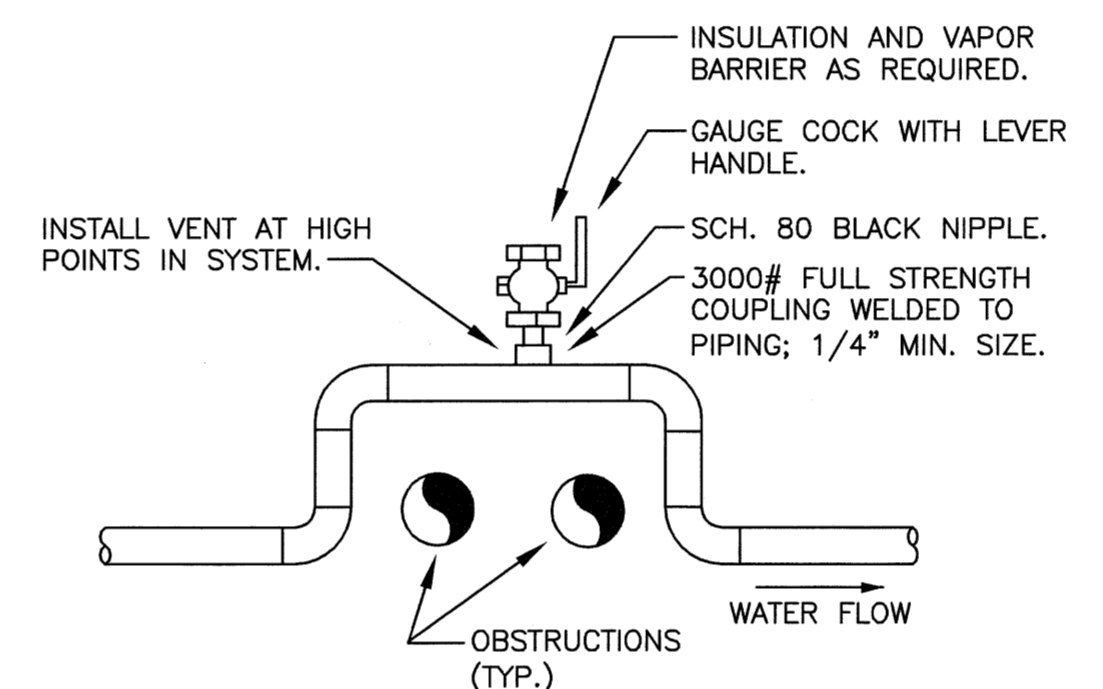
K13 DUCT TRANSITION

NOT TO SCALE



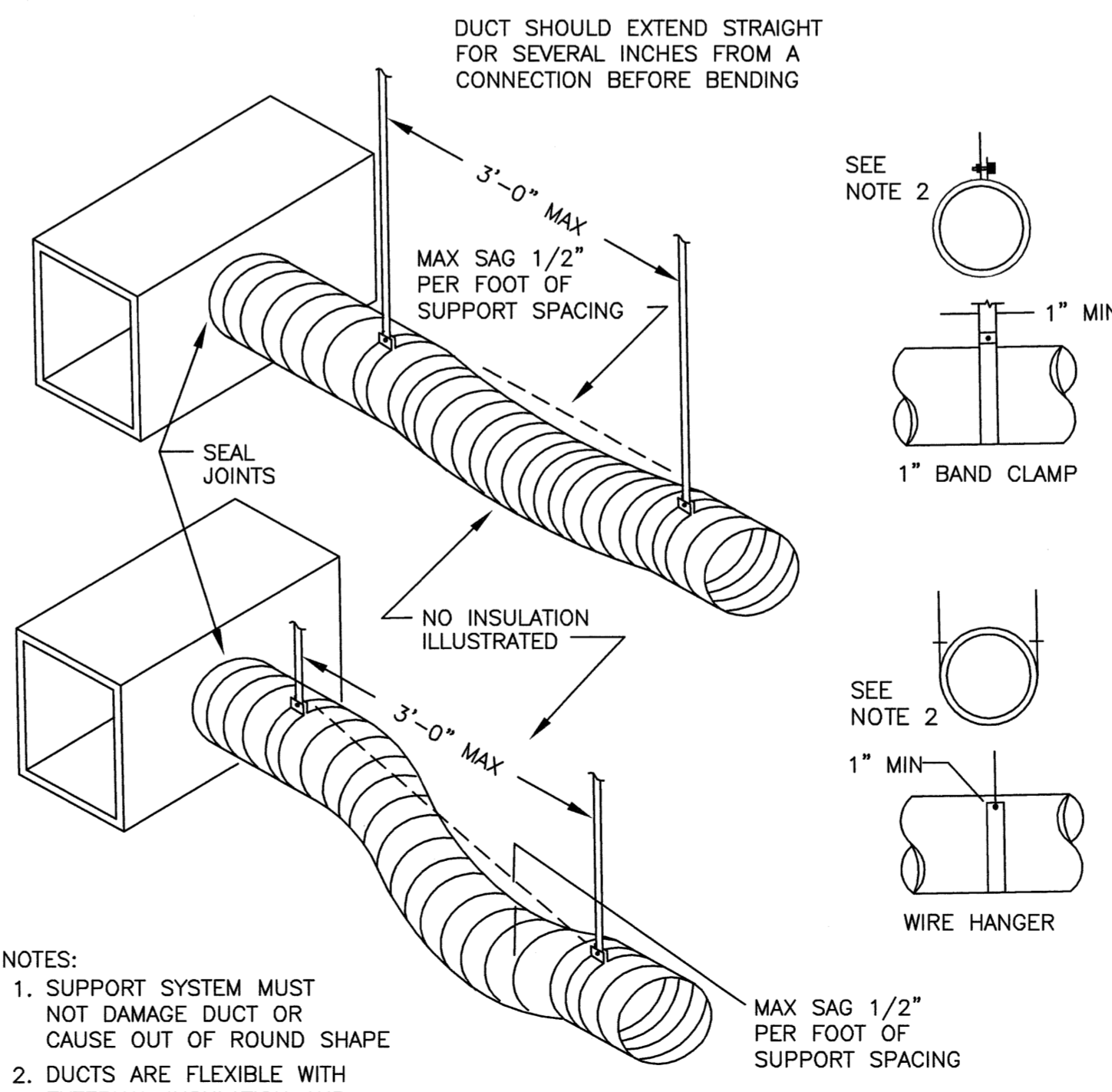
A1 PIPE PENETRATION DETAILS

NOT TO SCALE



F8 HIGH POINT MANUAL AIR VENT DETAIL

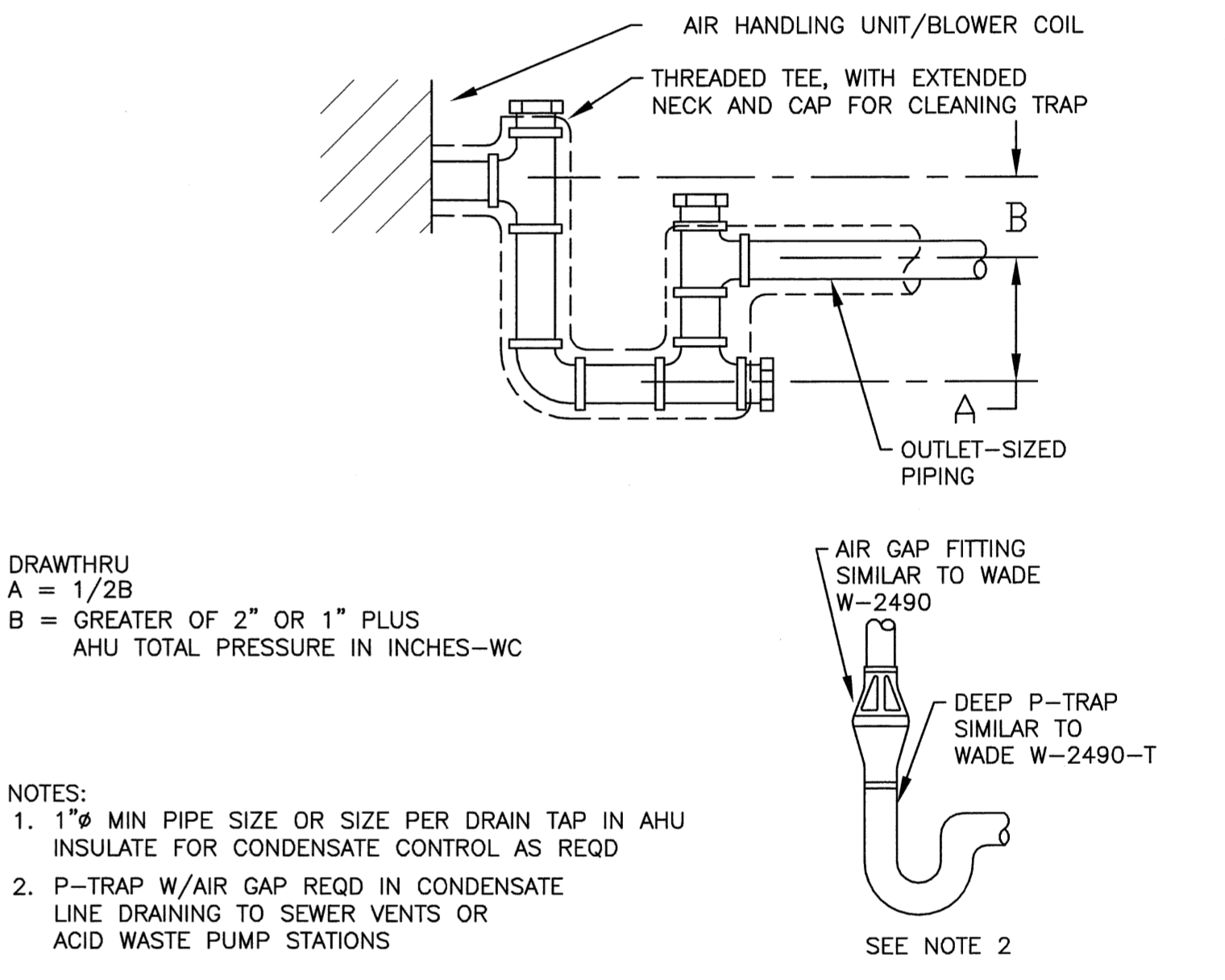
NOT TO SCALE



- NOTES:
- SUPPORT SYSTEM MUST NOT DAMAGE DUCT OR CAUSE OUT OF ROUND SHAPE
 - DUCTS ARE FLEXIBLE WITH EXTERNAL INSULATION AND VAPOR BARRIER JACKETING
 - MIN CENTER LINE BEND RADIUS IS ONE DIA, (OR INSIDE RADIUS OF D/2)

A8 STRAIGHT SECTION FLEXIBLE DUCT SUPPORT REQUIREMENTS

NOT TO SCALE

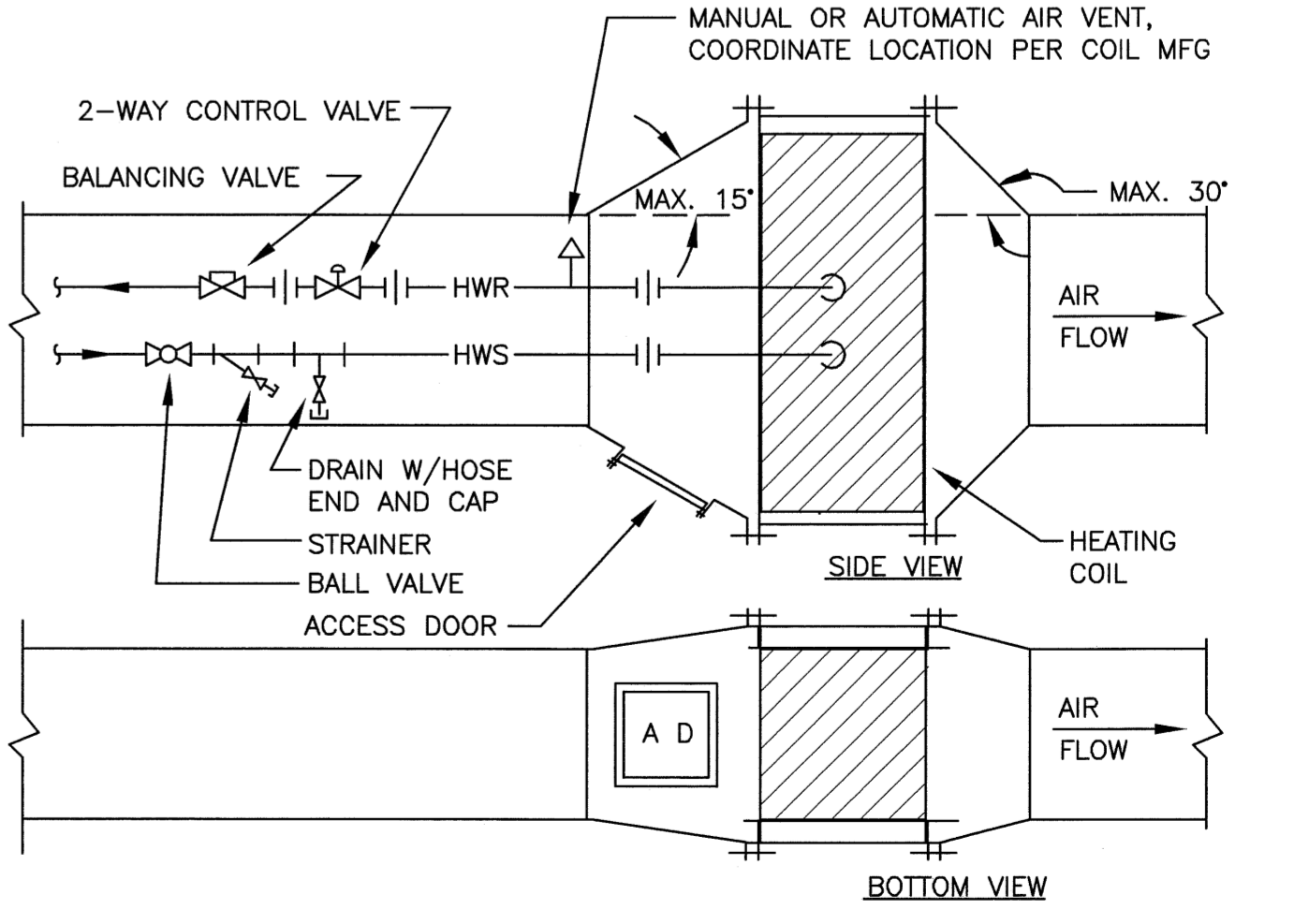


DRAWTHRU
A = 1/2B
B = GREATER OF 2" OR 1" PLUS AHU TOTAL PRESSURE IN INCHES-WC

- NOTES:
- 1" MIN PIPE SIZE OR SIZE PER DRAIN TAP IN AHU INSULATE FOR CONDENSATE CONTROL AS REQD
 - P-TRAP W/AIR GAP REQD IN CONDENSATE LINE DRAINING TO SEWER VENTS OR ACID WASTE PUMP STATIONS

E12 CONDENSATE DRAIN TRAP

NOT TO SCALE



A12 DUCT HEATING COIL PIPING SCHEMATIC

NOT TO SCALE

TYPICAL FOR VAV REHEAT COILS

144 Fore Street, P.O. Box 618
Portland, Maine 04104
Tel: (207) 772-3846
Fax: (207) 772-1070
www.smrtinc.com

ARCHITECTURE
ENGINEERING
PLANNING
INTERIOR DESIGN
COMMISSIONING

SMRT

STATE OF MAINE
PETER W. BROWN
No. 5743
LICENSED PROFESSIONAL ENGINEER

Maine Medical Center
Cath Lab #2 Reno
PORTLAND, ME

ISSUED FOR CONSTRUCTION
3-30-09

NO.	DATE	DESCRIPTION
0	3-30-09	ISSUED FOR CONSTRUCTION
1		
2		
3		
4		
5		
6		
7		
8		
9		
10		
11		
12		
13		
14		
15		
16		

GRAPHIC SCALE:
0" 1"

SCALE: NOT TO SCALE

PROJECT MANAGER: KOT
IC/DRAWN BY: BAL
A/E OF RECORD: PWB
CAD FILE: M-501-09009
PROJECT NO: 09009
DATE: 3-30-09
SHEET TITLE: DETAILS

SHEET No: **M-501**