

**REFLECTED CEILING NOTES**

1. FIRE SPRINKLERS SHALL BE LOCATED IN ALIGNMENT WITH OTHER CEILING ITEMS, TYPICALLY.
2. FIRE SPRINKLERS SHALL BE CENTERED IN CEILING TILE SQUARES (2X2).
3. FIRE SPRINKLERS SHALL BE PLACED TO COORDINATE WITH LIGHT FIXTURE POSITIONS INDICATED.
4. ADDITIONAL SPRINKLERS MAY BE REQUIRED FOR CODE COMPLIANCE, AS DETERMINED BY THE FIRE PROTECTION DESIGNER. SPRINKLERS ARE NOT SHOWN IN ALL AREAS WHERE REQUIRED. FIRE PROTECTION CONTRACTOR SHALL BE RESPONSIBLE FOR PROVIDING A COMPLETE, CODE COMPLIANT SYSTEM, INCLUDING HEADS NOT INDICATED IN THIS DRAWING. RE: MECH.
5. ALIGN CEILING ITEMS AS SHOWN, WITH COMMON CENTERLINES, TYPICALLY. CENTER ITEMS IN CEILINGS, OR IN AREAS UNLESS INDICATED OTHERWISE.
6. REFER TO ROOM FINISH SCHEDULE FOR CEILING HEIGHTS AND CEILING FINISHES TO BE PROVIDED.
7. EXCEPT WHERE INDICATED, CENTER CEILING GRIDS IN ROOMS. USE HALF TILES OR GREATER @ PERIMETERS WHERE POSSIBLE.

**SYMBOL LEGEND**

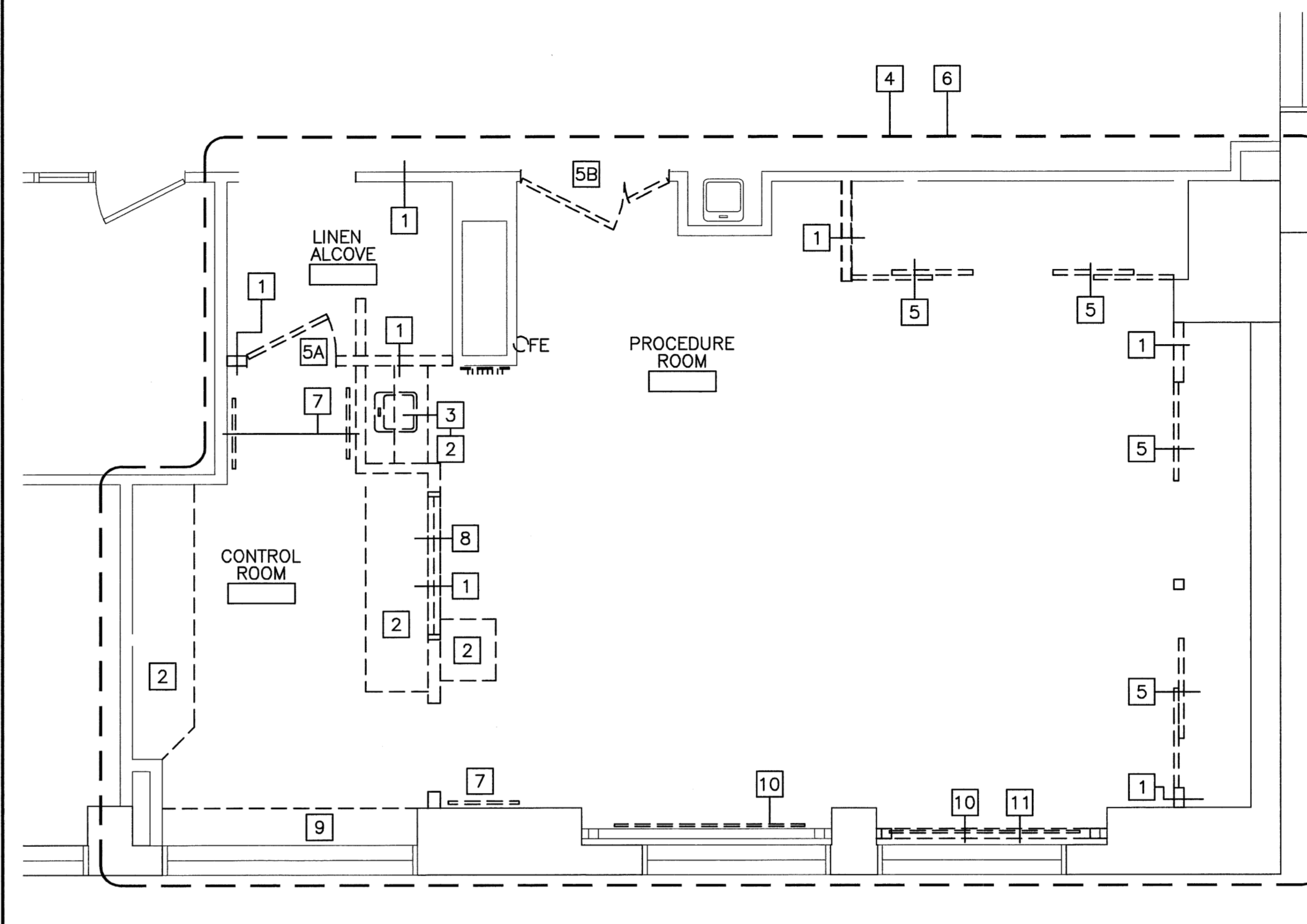
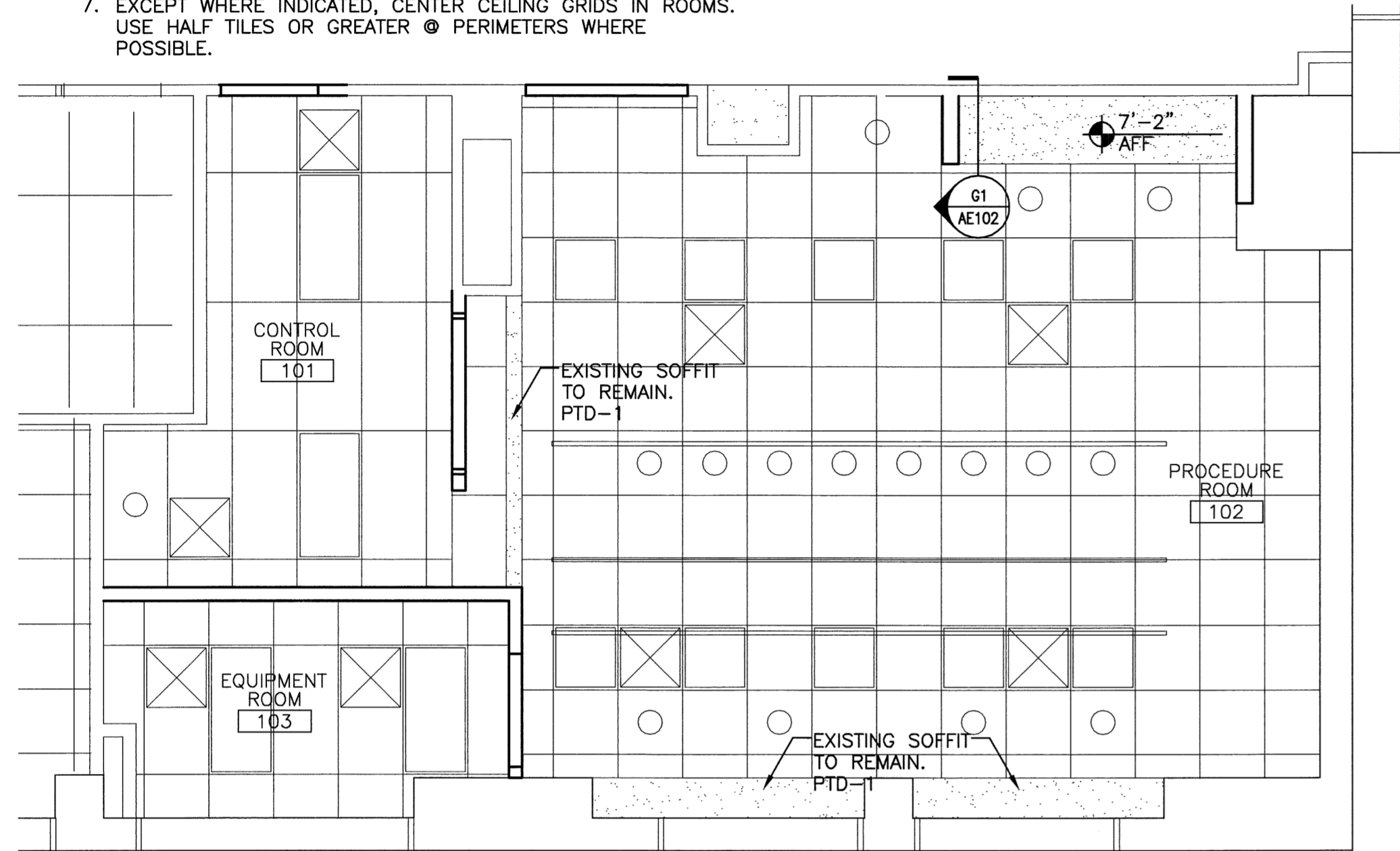
- 2x2 SUSPENDED CEILING PANEL AND GRID ASSEMBLY.
- GWB CEILING.
- 2x2 LAY-IN LIGHT FIXTURE.
- 2x4 LAY-IN LIGHT FIXTURE.
- 1x4 LIGHT FIXTURE.
- FLOURESCENT STRIP FIXTURE.
- DOWN LIGHT.
- CEILING MOUNTED EXIST LIGHT.
- RETURN AIR GRILLE.
- SUPPLY AIR GRILLE.
- EXHAUST AIR GRILLE.
- LINEAR DIFFUSER.
- SPRINKLER HEAD.
- CEILING MOUNTED SPEAKER.
- CEILING MOUNTED SMOKE DETECTOR.

**GENERAL DEMOLITION NOTES:**

1. COORDINATE EXTENT OF DEMOLITION WITH LOCATIONS OF PARTITIONS DESCRIBED ON PLANS AND WITH LOCATIONS OF FINISHES NOTED AS EXISTING TO REMAIN.
2. ANY WALL, PARTITION OR SURFACE DISTURBED BECAUSE OF NEW WORK OR DEMOLITION SHALL BE PATCHED AND FINISHED CONTINUOUSLY TO THE NEAREST CORNER UNLESS NOTED OTHERWISE, MATCH EXISTING ADJACENT CONSTRUCTION FINISHES, CONTINUITY AND FIRE RATINGS UNLESS NOTED OTHERWISE.
3. PROTECT ALL FINISHES, MATERIALS AND EQUIPMENT NOTED AS EXISTING TO REMAIN. CONTRACTOR SHALL BE RESPONSIBLE TO REPLACE ALL FINISHES, MATERIALS AND EQUIPMENT DAMAGED DURING CONSTRUCTION.
4. FOR EXTENTS OF CEILING GRID REMOVALS AND ADJUSTMENTS REFER TO SHEET AE101
5. DIMENSIONS INDICATED ± ARE EXISTING CONDITION DIMENSIONS TO BE VERIFIED IN FIELD.
6. COORDINATE ADDITIONAL DEMOLITION WITH MECHANICAL, ELECTRICAL AND PLUMBING DRAWINGS.

**DEMOLITION KEY NOTES:**

- 1 REMOVE PARTITION COMPLETE.
- 2 REMOVE EXISTING CASEWORK COMPLETE.
- 3 REMOVE PLUMBING FIXTURE.
- 4 REMOVE CEILING TILE & GRID COMPLETE.
- 5 REMOVE DOOR, DOOR FRAME AND RETURN TO OWNER.
- 5A REMOVE DOOR, DOOR FRAME & HARDWARE
- 5B REMOVE DOOR & HARDWARE
- 6 REMOVE FLOOR AND RUBBER BASE COMPLETE
- 7 REMOVE APRON RACK AND/OR WHITE BOARD, INSTALL IN NEW LOCATION AS SHOWN IN FLOOR PLAN
- 8 REMOVE EXISTING LEAD LINED WINDOW, REINSTALL IN NEW LOCATION SHOWN IN FLOOR PLAN
- 9 REMOVE UPPER AND LOWER CASEWORK AND REINSTALL IN NEW LOCATION SHOWN IN FLOOR PLAN
- 10 REMOVE EXISTING MILLICARE ROLLER TRACK AND BOTTOM SUPPORT RAIL. RETURN TO OWNER
- 11 REMOVE EXISTING CATHETER RACK AND REINSTALL PER LOCATION SHOWN IN FLOOR PLAN/ELEVATIONS



NOTE: CONTRACTOR TO NOTIFY ARCHITECT WHEN INTERIOR DEMO IS COMPLETE. THE STRUCTURAL ENGINEER WANTS TO INSPECT THE STEEL IN THE CEILING & FLOOR PRIOR TO START OF NEW CONSTRUCTION.

**G1 REFLECTED CEILING PLAN**

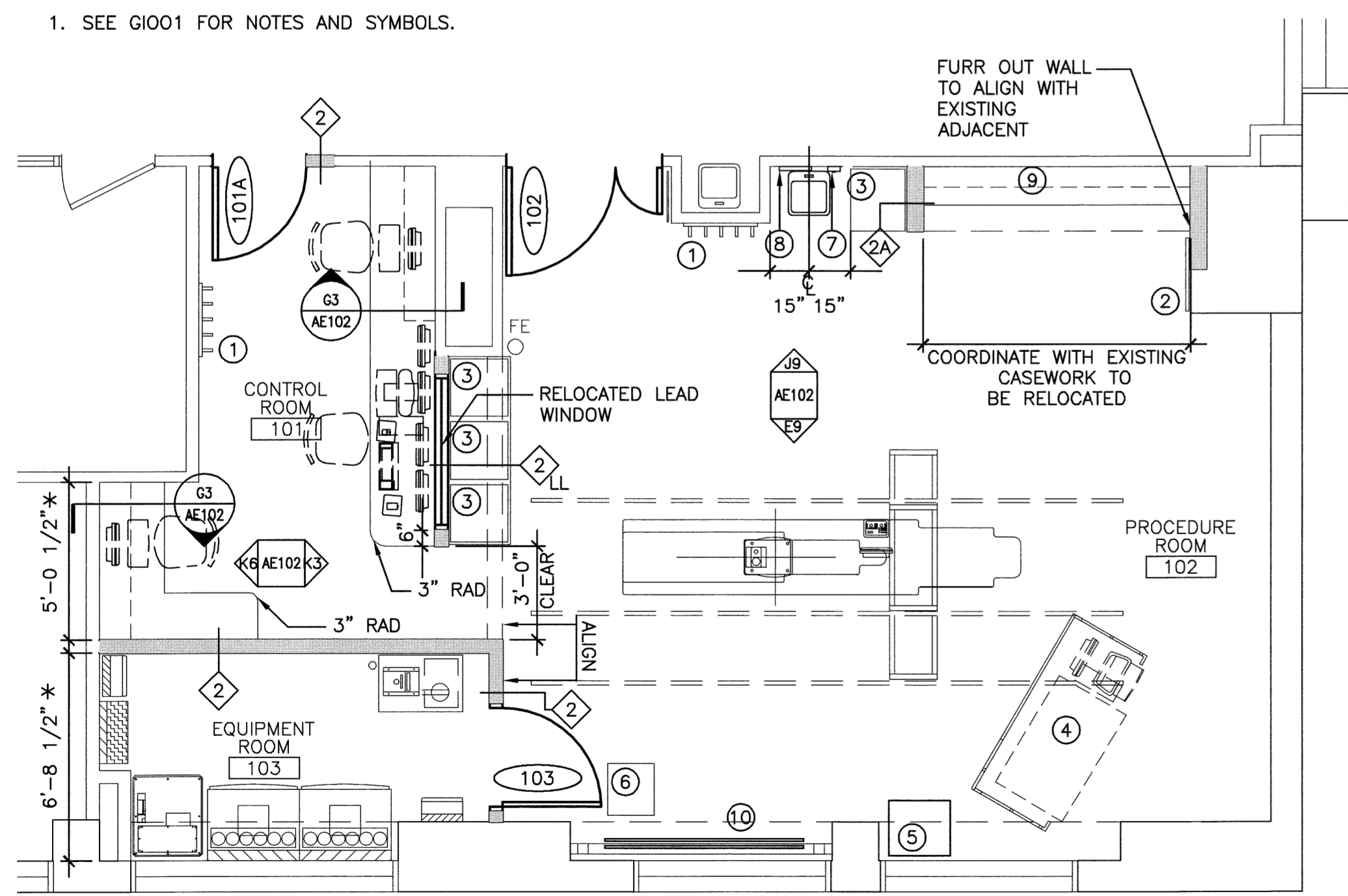
1/4"=1'-0"

**G8 DEMO PLAN**

1/4"=1'-0"

**GENERAL NOTES:**

1. SEE G1001 FOR NOTES AND SYMBOLS.



\* CONTRACTOR TO NOTIFY ARCHITECT IF THERE IS ANY DISCREPANCY GREATER THAN 2"

**DOOR SCHEDULE**

DOOR NUMBER	DOOR			FRAME	HWS	FIRE RATING (MIN.)	DOOR NUMBER	REMARKS
	SIZE	MATERIAL	ELEVATION					
101A	3'-0"x7'-0"x1-3/4"	WOOD	F	1	1		101A	PAINT FRAME PTD-2.
102	1'-6", 5'-0"x7'-0"x1-3/4"	WOOD	F	EXISTING	3		102	LEAD LINED. PAINT FRAME PTD-2.
103	3'-0"x7'-0"x1-3/4"	WOOD	F	1	2		103	PAINT FRAME PTD-2.

- HARDWARE SETS:**  
 1: HINGES, LEVER LOCKSET (PASSAGE), CLOSER, WALL STOP, SILENCERS.  
 2: PIVOT HINGES, LEVER LOCKSET (PASSAGE), SILENCERS.  
 3: PIVOT HINGES, ASTRAGAL, RE-USE WALL MAGS, NEW MAG PLATES, U-SHAPE STAINLESS STEEL PROTECTION PLATES ON LATCH & HINGE EDGES FOR BOTH LEAVES, STAINLESS STEEL PROTECTION PLATE 48" AFF CORRIDOR SIDE OF BOTH LEAVES, CLOSER & LEVER LOCKSET (PASSAGE) ON ACTIVE LEAF, FLUSH BOLTS ON INACTIVE LEAF.

**ROOM FINISH SCHEDULE**

ROOM NUMBER	ROOM NAME	FLOOR	BASE	WALLS	CEILING		ROOM NUMBER	REMARKS
					MATERIAL	HEIGHT		
101	CONTROL ROOM	RUB-1	SC	PTD-1	ACT-2	EXISTING	101	
102	PROCEDURE ROOM	RUB-1	SC	PTD-1	ACT-1	8'-6"	102	
103	EQUIPMENT ROOM	RUB-1	RB	PTD-1	ACT-2	8'-6"	103	

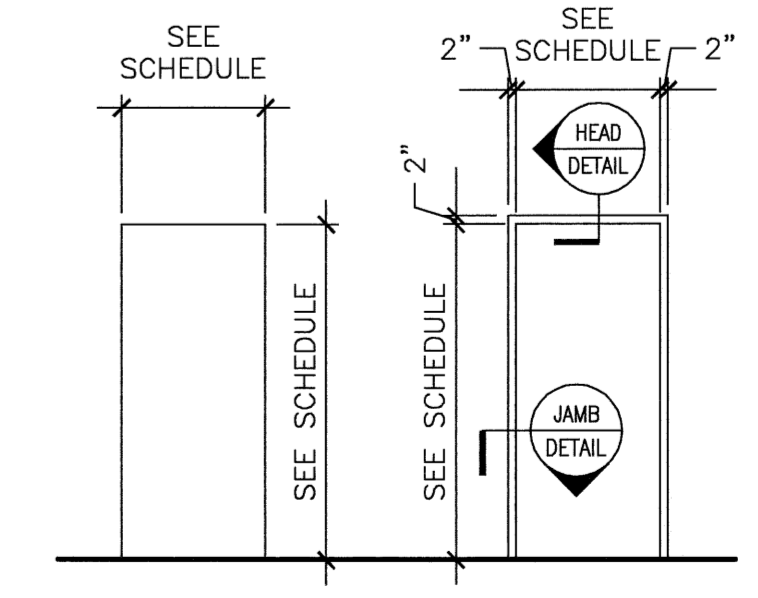
NOTE:  
ALL EXISTING AND NEW SOFFITS TO BE PAINTED PTD-1

**FINISH LEGEND:**

- ACOUSTIC CEILING TILE:**  
 ACT-1: ULTIMA 1910, SQUARE LAY-IN 24"x24"x3/4", W/ 15/16" CLEAN ROOM GASKETED GRID. GASKETED ANGLE MOULDINGS AS NEEDED.  
 ACT-2: ARMSTRONG CORTEGA-769, 24x48x5/8 SQUARE LAY-IN W/15/16" EXPOSED TEE GRID.
- PLASTIC LAMINATE:**  
 PLAM-1 - MMC STANDARD, COLOR TO BE CHOSEN BY USERS.
- RUBBER FLOORING:**  
 RUB-1 NORAPLAN MEGA, SMOOTH SURFACE, 3.0 MM THICKNESS, COLOR SELECTION BY OWNER.
- RUBBER BASE:**  
 SC - SELF COVED BASE
- PAINT:**  
 PTD-1 - MMC STANDARD WALL COLOR  
 PTD-2 - MMC STANDARD DOOR FRAME - MATCH EXISTING CORRIDOR FRAMES

**EQUIPMENT SCHEDULE**

TAG	DESCRIPTION	STATUS
①	APRON RACK	O/C
②	WHITE BOARD	O/C
③	CART	O/C
④	PHYSIO MONITORING	O/O
⑤	PYXIS	O/O
⑥	CONTRAST WARMER	O/O
⑦	SOAP DISP	O/C
⑧	PAPER TOWEL DISP.	O/C
⑨	EXIST. CASEWORK (RELOCATED) SEE DEMO 9	O/C
⑩	EXIST CATHETER RACK (RELOCATED) SEE DEMO 10	O/C



**A1 FLOOR PLAN**

1/4"=1'-0"

**A7 SCHEDULES & NOTES**

NTS

**A13 DOOR ELEVATIONS**

NTS

144 Fore Street, P.O. Box 618  
 Portland, Maine 04104  
 Tel: (207) 775-3846  
 Fax: (207) 775-0070  
 www.smartinc.com

ARCHITECTURE  
 ENGINEERING  
 PLANNING  
 INTERIOR DESIGN  
 COMMISSIONING

**SMART**

PROJECT NORTH

LICENSED ARCHITECT  
 KRISTEN L. DAMUTH  
 No. 2785  
 Kristen Damuth  
 STATE OF MAINE  
 30 Mar 09

ISSUED FOR CONSTRUCTION  
 3-30-09

Current Issue Status: \_\_\_\_\_  
 DATE: \_\_\_\_\_  
 DESCRIPTION: \_\_\_\_\_  
 REV: \_\_\_\_\_

SCALE: AS DRAWN  
 PROJECT MANAGER: KD  
 ICD/DRAWN BY: ART  
 A/E OF RECORD: KD  
 CAD FILE: AE101-09009  
 PROJECT NO: 09009  
 DATE: \_\_\_\_\_  
 SHEET TITLE: DEMO, RCP AND FLOOR PLAN

SHEET No. **AE-101**