

MAINE MEDICAL CENTER CATH. LAB #2 RENO. PORTLAND, MAINE

ABBREVIATIONS

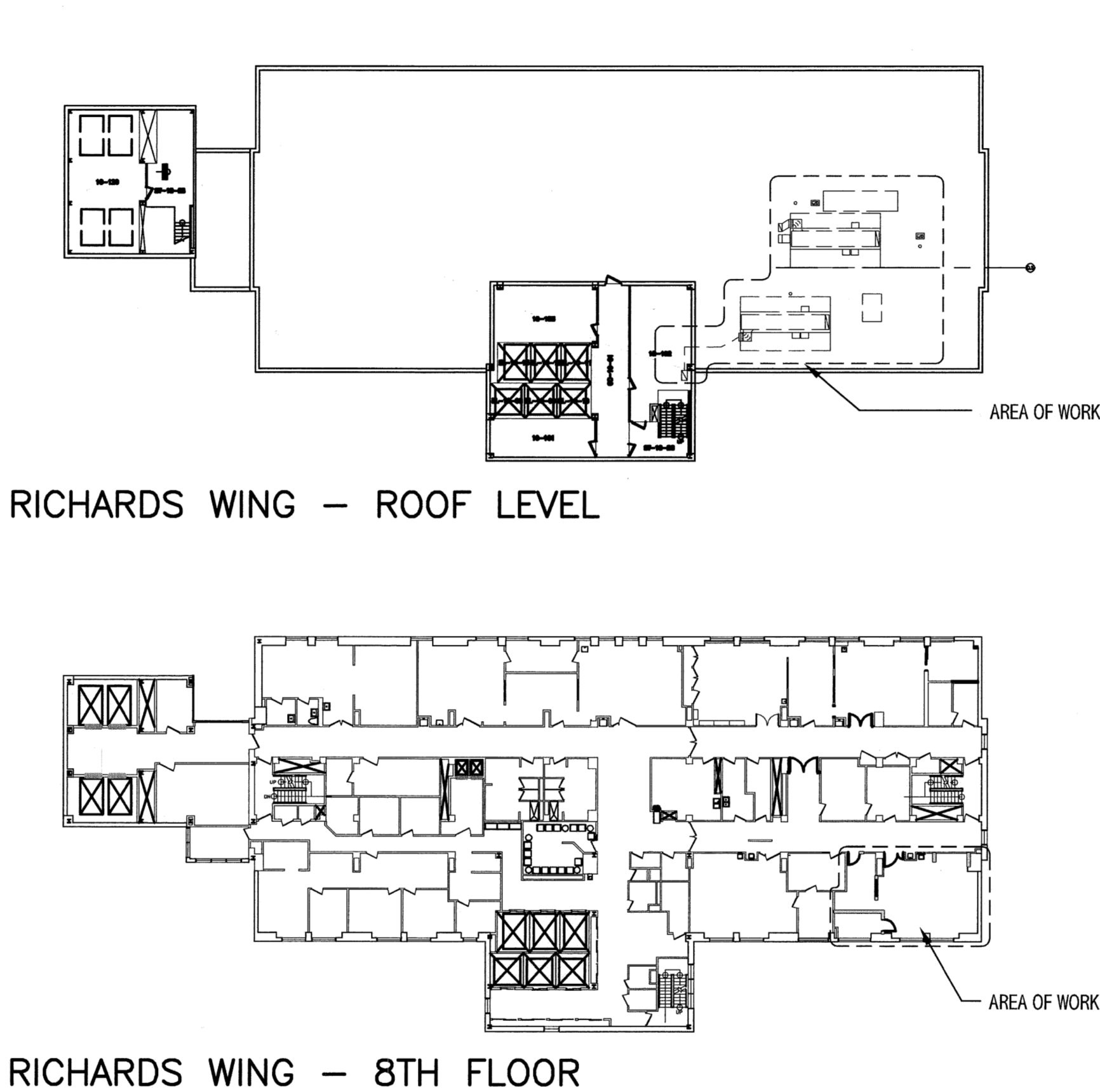
AB ANCHOR BOLT	L ANGLE; LENGTH
AC AIR CONDITIONING	LF LEFT
ACCU AIR CONDITIONING CONDENSER UNIT	LINO SHEET LINOLEUM
ACPLAS ACOUSTICAL PLASTER	LL LIVE LOAD
ACT ACOUSTIC CEILING TILE	LLH LONG LEG HORIZONTAL
AFF ABOVE FINISHED FLOOR	LLV LONG LEG VERTICAL
AGG AGGREGATE	LP LIGHTING PANEL; LIQUIFIED PROPANE
ALT ALTERNATE	
AP ACCESS PANEL	
APROX APPROXIMATE	MAX MAXIMUM
ARCH ARCHITECTURAL	MB MARKER BOARD
	MDO MEDIUM DENSITY OVERLAY
BCX BOTTOM CHORD EXTENSION	MECH MECHANICAL
BD BOARD	MFR MANUFACTURER
BIT BITUMINOUS	MIN MINIMUM
BLDG BUILDING	MISC MISCELLANEOUS
BLP BORROWED LIGHT PANEL	MO MASONRY OPENING
BO BOTTOM OF	MR MOISTURE-RESISTANT
BOF BOTTOM OF FOOTING	MUA MAKE-UP AIR
BOS BOTTOM OF STEEL	
BOT BOTTOM	N NOSING
BRDG BRIDGING	NCB NEW CATCH BASIN
BRG BEARING	NDMH NEW DRAIN MANHOLE
BS BOTH SIDES	NFM NEW FORCE MAINE
BSE BSBRICK SHELF ELEVATION	NIC NOT IN CONTRACT
	NS NEAR SIDE
C CHANNEL	NSD NEW STORM DRAIN LINE
CB CATCH BASIN; CHALKBOARD	NSS NEW SANITARY SEWER LINE
CEM BD CEMENTITIOUS BACKER BOARD	NTS NOT TO SCALE
CFM CUBIC FEET PER MINUTE	NW NEW WATER LINE
CIP CAST IN PLACE	
CJ CONTROL JOINT; CONSTRUCTION	OC ON CENTER
CL JOINT	OF OUTSIDE FACE
CLL CENTER LINE	OH OVERHEAD
CLR CONTRACT LIMIT LINE	
CMU CLEAR	PA PUBLIC ADDRESS
CONC CONCRETE MASONRY UNIT	PAF POWDER-ACTUATED FASTENER
COL COLUMN	PDU POOL DEHUMIDIFICATION UNIT
CONC CONCRETE	PL PLATE; PROPERTY LINE
CONT CONTINUOUS	PLAM PLASTIC LAMINATE
CT CERAMIC TILE	PP POUNDS PER LINEAR FOOT
CUH CABINET UNIT HEATER	PPS POUNDS PER SQUARE FOOT
	PSI POUNDS PER SQUARE INCH
D DIAMETER	PT PRESSURE-TREATED
DBL DOUBLE	PVC POLYVINYL CHLORIDE
DF DRINKING FOUNTAIN	PVMT PAVEMENT
DL DEAD LOAD	
DR DISPLAY RAIL	R RISER; RADIUS
DTL DETAIL	RB RESILIENT BASE
DW DISHWASHER	RD ROOF DRAIN
DWG DRAWING	REIN REINFORCED
	REINQ'D REQUIRED
EA EACH	RT RIGHT
EF EXHAUST FAN; EACH FACE	RO ROUGH OPENING
EJ EXPANSION JOINT	ROW RIGHT OF WAY
EL ELEVATION	RR RUB-RAIL
ELEC ELECTRICAL	RTU ROOFTOP UNIT (HVAC)
EOP EDGE OF PAVEMENT	
EPDM ETHYLENE PROPYLENE DIENE MONOMER	SACT SUSPENDED ACOUSTIC TILE
EQ EACH WAY	SC SOLID CORE
EW ELECTRIC WATER COOLER	SF SQUARE FOOT; SUPPLY FAN
EWC ELECTRIC WATER COOLER	SHT SHEET
EXIST EXISTING	SIM SIMILAR
EXP EXPANSION	SK SHEAR KEY
EXT EXTERIOR	SN SANITARY NAPKIN (DISPENSER)
	SP SPECIAL
FB FLAT BAR	SS STAINLESS STEEL
FBO FURNISHED BY OTHERS	STA STATION
FCC FLOOR CLEAN-OUT	STR STRUCTURAL
FD FLOOR DRAIN	
FE FIRE EXTINGUISHER	T TREAD
FF FINISHED FLOOR; FAR FACE	TB TACKBOARD
FFE FINISHED FLOOR ELEVATION	T&B TOP AND BOTTOM
FO FRAMED OPENING	TBM TEMPORARY BENCHMARK
FRP FIBERGLASS REINFORCED PLASTIC	TCE TOP CHORD EXTENSION
FS FAR SIDE	TJ TIE JOIST
FTG FOOTING	TO TOP OF
	TOC TOP OF CONCRETE
GA GAUGE	TOF TOP OF FOOTING
GALV GALVANIZED	TOM TOP OF MASONRY
GB GRAB BAR	TOP TOP OF PIER
GC GENERAL CONTRACTOR	TOS TOP OF STEEL; TOP OF SLAB
GDT GYPSUM DROP-IN TILE	TOW TOP OF WALL
GV GRAVITY VENT	
GWB GYPSUM WALL BOARD	TP TOILET PAPER (DISPENSER)
	TS TUBE STEEL
H HORIZONTAL	TYP TYPICAL
HC HANDICAPPED; HOLLOW CORE	
HORIZ HORIZONTAL	UH UNIT HEATER
HM HOLLOW METAL	UNO UNLESS NOTED OTHERWISE
HRU HEAT RECOVERY UNIT	
H&V HEATING AND VENTILATING	V VENT PIPE; VERTICAL
HVAC HEATING, VENTILATING AND AIR CONDITIONING	VB VAPOR BARRIER
	VCT VENT COMPOSITION TILE
I INCLUDED ANGLE	VP VISION PANEL
ID INSIDE DIAMETER	VTR VENT THROUGH THE ROOF
IF INSIDE FACE	
IJ ISOLATION JOINT	W WITH
IMP IMPACT RESISTANT	WC WATER CLOSET
INS INSULATED	WF WIDE FLANGE
INV INVERT	WH WATER HEATER
	W/O WITHOUT
JS JOIST SUBSTITUTE	WP WORKING POINT
	WS WEB STIFFENER
K KIPS	WWF WELDED WIRE FABRIC

SYMBOL LEGEND

	BUILDING SECTION
	WALL SECTION
	DETAIL
	EXTERIOR ELEVATION
	INTERIOR ELEVATION
	LEVEL LINE
	CIRCLE NOTE
	WINDOW TAG
	PARTITION TAG
	DOOR TAG
	ROOM NAME
	ROOM NUMBER
	COLUMN BUBBLE AND CENTER LINE
	BACKER ROD AND SEALANT

GRID NO.	TITLE
402	DOOR TAG
402	ROOM NAME
402	ROOM NUMBER
402	COLUMN BUBBLE AND CENTER LINE
402	BACKER ROD AND SEALANT

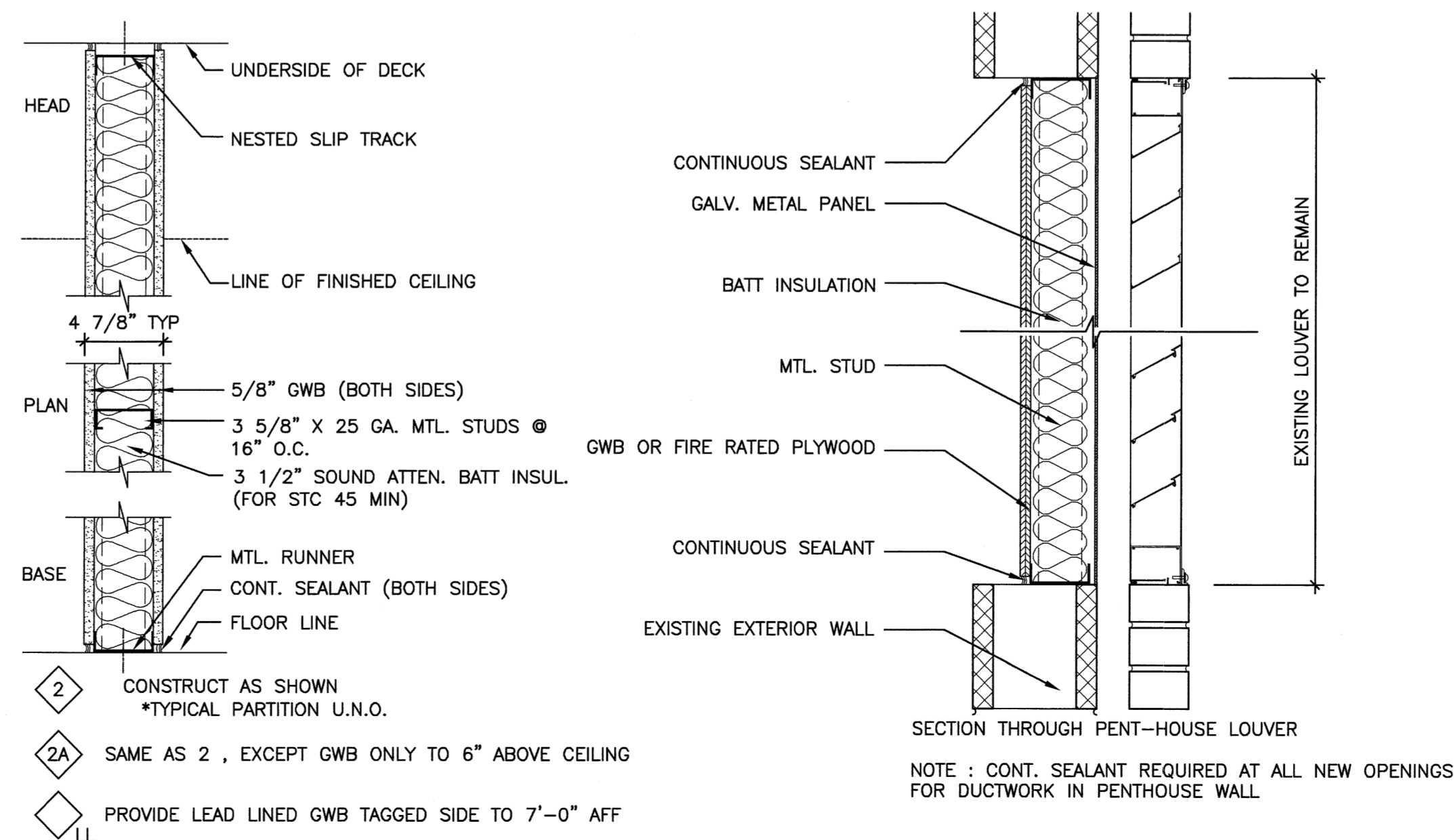
EXTENTS OF WORK:



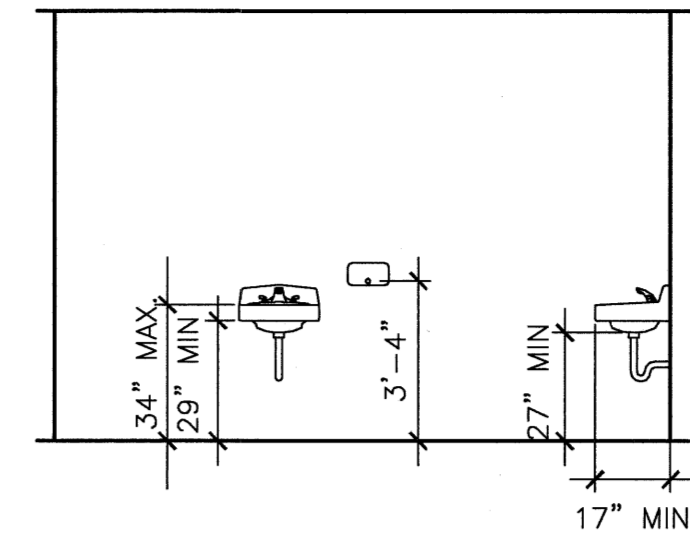
DRAWING LIST:

ARCHITECTURAL:	
G1001	COVER SHEET AND PARTITION LEGEND
AE101	DEMO, FLOOR AND REFLECTED CEILING PLAN
AE102	INTERIOR ELEVATIONS AND DETAILS
STRUCTURAL:	
SF101	MECHANICAL PLATFORM FRAMING PLAN WITH NOTES AND DETAILS
MECHANICAL:	
M-001	LEGEND AND ABBREVIATIONS
MD101	HVAC DEMOLITION PLAN
M-101	HVAC PLAN
M-102	MECHANICAL NEW AND DEMO ROOF PLAN
M-501	DETAILS
M-502	DETAILS
M-601	SCHEDULES
M-651	SEQUENCE OF OPERATIONS
ELECTRICAL:	
E-001	LEGEND AND GENERAL NOTES
E-101	ELECTRICAL DEMOLITION, LIGHTING AND SYSTEMS PLAN
E-102	ELECTRICAL POWER PLANS

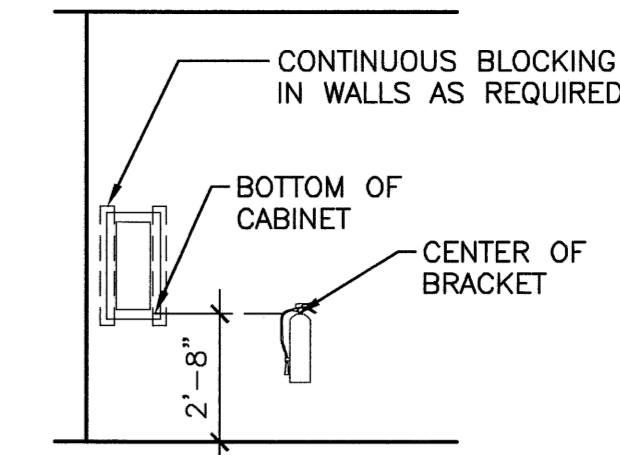
PARTITION LEGEND:



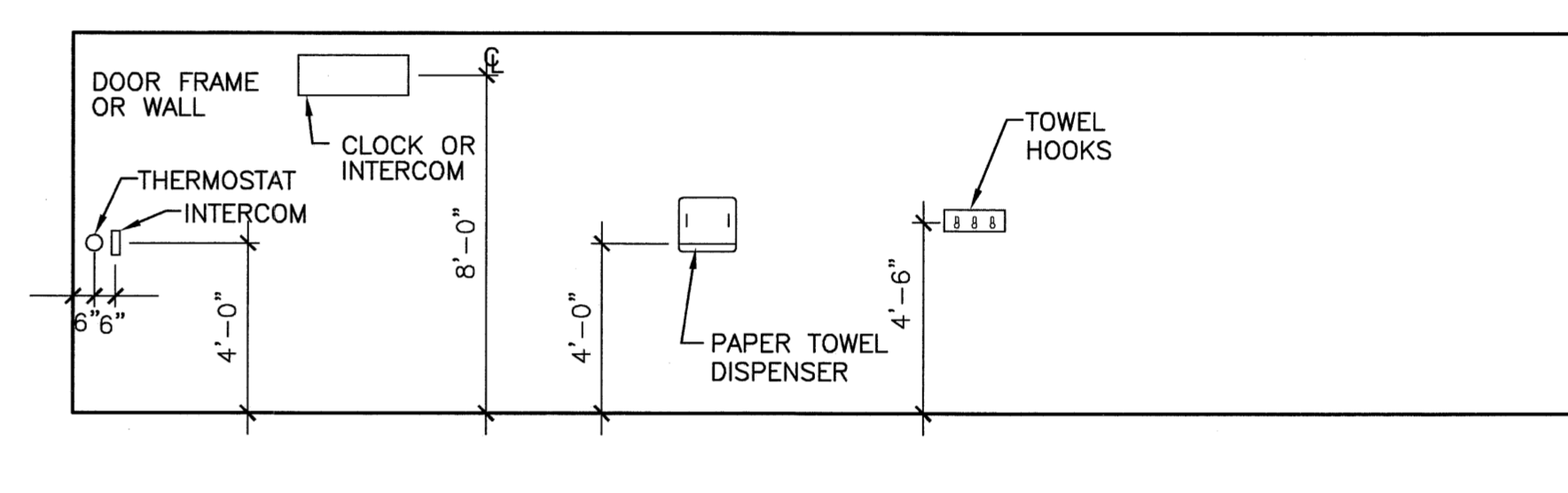
SINK & FIXTURES



FIRE EXTINGUISHER



DOOR HARDWARE & ACCESSORIES



ACCESSORIES

F12 TYPICAL MOUNTING HEIGHTS

NOT TO SCALE

PROJECT GENERAL NOTES:

- FIELD VERIFY ALL DIMENSIONS AND LAYOUT PRIOR TO PROCEEDING WITH WORK. NOTIFY ARCHITECT IN WRITING OF ANY DISCREPANCIES OR INCONSISTENCIES. FAILURE TO REPORT ANY DISCREPANCIES WITHIN THESE CONSTRUCTION DOCUMENTS TO THE ARCHITECT WILL NOT BE GROUNDS FOR ADDITIONAL COST OR CHANGE ORDERS.
- CONTRACTOR SHALL BE RESPONSIBLE FOR PROVIDING ALL MATERIALS (UNLESS NOTED OTHERWISE), AND WORKMANSHIP IN ACCORDANCE WITH FEDERAL, STATE, CITY AND LOCAL BUILDING CODES AND THEIR REQUIREMENTS.
- CONTRACTOR AND ALL TRADES SHALL NOTE REQUIREMENTS OF "GENERAL NOTES" ON ALL SHEETS.
- EACH TRADE TO PROVIDE SMOKE OR FIRE SEALANT AT PENETRATIONS AS REQUIRED FOR WALL TYPE. ALL SEALANT, FIRE STOPPING, AND SMOKE STOPPING ASSEMBLIES SHALL BE U.L. RATED.
- DIMENSIONS ARE FACE OF CONCRETE, FACE OF MASONRY, AND CENTERLINE OF STUD PARTITIONS, UNLESS INDICATED OTHERWISE.
- REFER TO ALL CONSTRUCTION DOCUMENTS FOR REQUIREMENTS WHICH MAY AFFECT THE WORK IN ANOTHER DISCIPLINE AND COORDINATE WORK.
- SEE G1003 FOR TYPICAL MOUNTING HEIGHTS OF PLUMBING FIXTURES, BATHROOM ACCESSORIES AND MISC. ITEMS.
- REFER TO DETAILS FOR ADDITIONAL DIMENSIONAL INFORMATION.
- DOOR JAMBS SHALL BE LOCATED 4" FROM CORNER IN STUD PARTITIONS AND 8" FROM CORNER IN MASONRY PARTITIONS, UNLESS INDICATED OTHERWISE.
- PROVIDE BLOCKING IN WALLS AS NECESSARY WHERE CASEWORK, SHELVES, HANDRAILS, AND MISC. EQUIPMENT ARE LOCATED, INCLUDING THOSE ITEMS PROVIDED BY OTHERS.
- DO NOT SCALE DRAWINGS.
- "PROVIDE" MEANS "FURNISH AND INSTALL".
- ELEVATIONS INDICATED ON THE GENERAL, ARCHITECTURAL, STRUCTURAL, MECHANICAL, ELECTRICAL, FIRE PROTECTION AND PLUMBING DRAWINGS ARE BASED ON AN ASSIGNED REFERENCE ELEVATION OF THE FIRST FLOOR = 189'-0". ACTUAL FIRST FLOOR ELEVATION BASED ON USGS DATUM 189.00'.
- PATCH ALL HOLES, WALLS AND CRACKS IN ROOMS TO RECEIVE NEW PAINT.
- G.C. TO CONFIRM EXISTING WALL RATINGS.

144 Fore Street, P.O. Box 618
Portland, Maine 04104
Tel: (207) 772-3846
Fax: (207) 772-1070
www.smartrc.com

ARCHITECTURE
ENGINEERING
PLANNING
INTERIOR DESIGN
COMMISSIONING

SMART

PROJECT NORTH

REGISTERED ARCHITECT
KRISTEN L. DAMUTH
No. 2768
Maine
30 Mar 09

ISSUED FOR CONSTRUCTION
3-30-09

Maine Medical Center
Cath Lab #2 Reno
PORTLAND, ME

NO.	DESCRIPTION	DATE
1	ISSUED FOR CONSTRUCTION	3-30-09
2	REV	

GRAPHIC SCALE:
0' 1'

SCALE:	NTS
PROJECT MANAGER:	KD
IC/DRAWN BY:	ART
DATE OF RECORD:	KD
CAD FILE:	G1001-09009
PROJECT NO.:	09009
DATE:	3-30-09

SHEET TITLE:
COVER SHEET, LEGEND,
ABBREVIATIONS AND
NOTES

SHEET No.
G1001