

**NOTES:**

1. SEE DRAWING ED FOR GENERAL NOTES AND LEGEND.
2. ALL WIRING TO BE CONCEALED. COORDINATE DROPS TO SWITCHES WITH ACM CONTRACTOR.
3. MAINTAIN CONTINUITY OF SERVICE AT ALL TIMES. FIELD VERIFY AREAS SERVED BY EXISTING BRANCH CIRCUITS.
4. VERIFY ABANDONED CIRCUITS CREATED BY REMOVALS. REWIRE TO EXISTING CIRCUIT BREAKERS WHERE POSSIBLE.
5. VERIFY EXTENT OF EXISTING LIFE SAFETY AND CRITICAL CARE POWER. MAINTAIN SEPARATION OF SERVICES. PROVIDE LIGHTING SHOWN FROM LIFE SAFETY EMERGENCY POWER PANEL.
6. THIS DRAWING IS FOR DIAGRAMMATIC CONTROL GROUPS ONLY. MAINTAIN AN AS-BUILT DRAWING ON SITE WITH ACTUAL HOME RUNS AND CIRCUIT DESIGNATIONS.

**KEYED NOTES:**

- 1 ZOLLS SYSTEM. MOUNT RECEPTACLES IN ALCOVE ABOVE EACH OTHER AT THE HEIGHTS SHOWN.
- 2 TRASH COMPACTOR. INSTALL ON DEDICATED CIRCUIT.
- 3 INFRARED SENSOR FOR AUTOMATIC FAUCET. COORDINATE LOCATION WITH EQUIPMENT FURNISHED.
- 4 RECEPTACLE FOR PAR-X EQUIPMENT.
- 5 RECEPTACLE FOR PYX EQUIPMENT.
- 6 DEDICATED RECEPTACLE FOR BLANKET WARMER.
- 7 MODULAR FURNITURE. COORDINATE J-BOX HEIGHT AND LOCATION WITH FURNITURE. INCLUDES POWER FOR NURSE CALL MASTER STATION. FURNISH EMERGENCY CIRCUIT.
- 8 RECEPTACLE FOR FAX. MOUNT 44" AFF.
- 9 DEDICATED RECEPTACLE FOR PRINTER.
- 10 FURNISH EMERGENCY CIRCUIT AND JUNCTION BOX FOR CONNECTION TO P-TUBE SYSTEM.
- 11 NOT USED.
- 12 EMERGENCY RECEPTACLE FOR CRASH CART.
- 13 DEDICATED NORMAL POWER CIRCUIT FOR POINT OF USE WATER HEATER.
- 14 EXISTING COFFEE RECEPTACLE (TO REMAIN).
- 15 EXISTING POWER RECEPTACLES AND EQUIPMENT POWER IN KITCHEN 9146 AND CLEAN UTILITY 9145 TO REMAIN IN PLACE.
- 16 FURNISH NEW CIRCUIT WIRING FEEDS TO SHORTER WORKTABLE FROM SEVENTH FLOOR.
- 17 REUSE EXISTING CIRCUIT WIRING FEEDS TO LARGER WORKTABLE.
- 18 PHYSIOLOGIC MONITORING EQUIPMENT CABINET. 24" X 24" X 6" BOX FURNISHED BY OWNER. INSTALL DEDICATED HOSPITAL GRADE EMERGENCY DUPLEX AND A DATA OUTLET WITH TWO DATA CIRCUITS.
- 19 EXISTING SET OF DOORS TO BE FURNISHED WITH NEW POWER OPERATOR SYSTEM. DISCONNECT EXISTING/RECONNECT NEW. DEMO EXISTING PUSHPADS WHERE NOTED. MOUNT NEW PUSHPADS. COORDINATE LOCATION WITH ARCHITECTURAL PLANS.
- 20 REMOVE EXISTING WIRE MOLD DUPLEX RECEPTACLE.
- 21 IN EACH OF THE PATIENT ROOMS WHERE DIRECTED, RELOCATE TWO OF THE EMERGENCY DUPLEX RECEPTACLES ON THE HEADBOARD WALLS FROM THEIR EXISTING LOCATION TO 40" AFF.

Richards Wing  
Ninth Floor  
Renovations

Maine Medical Center  
Portland, Maine 04102

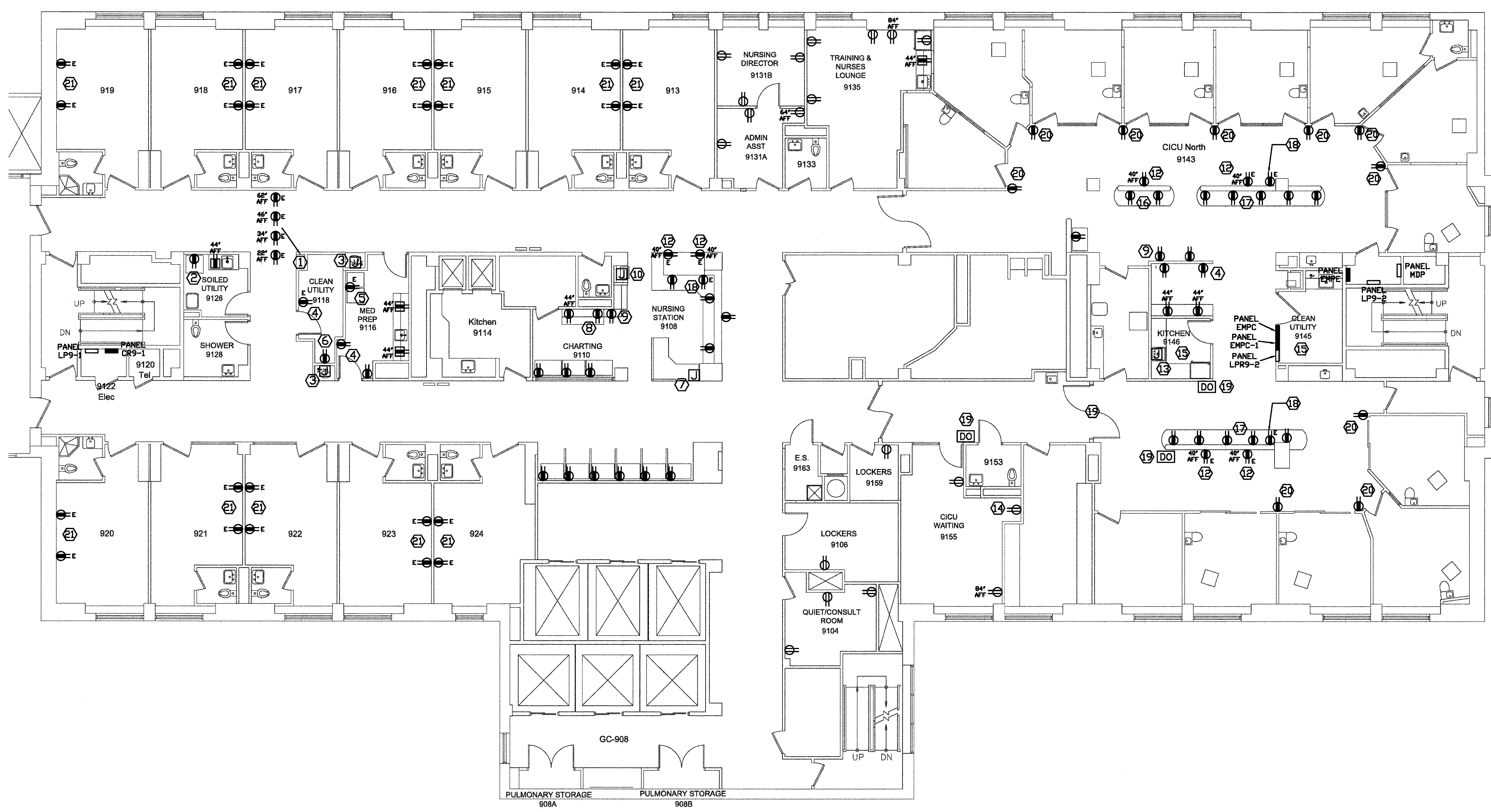
Architect  
Winton Scott Architects  
Portland, Maine

Mechanical Engineering  
Mechanical Systems Engineers  
Yarmouth, Maine

Electrical Engineering  
Swiftcurrent Engineering Services  
Yarmouth, Maine

Electrical  
Power Plan  
E1

Scale: 1/8" = 1' - 0"  
March 16, 2009



**1 POWER PLAN**  
SCALE: 1/8" = 1'-0"