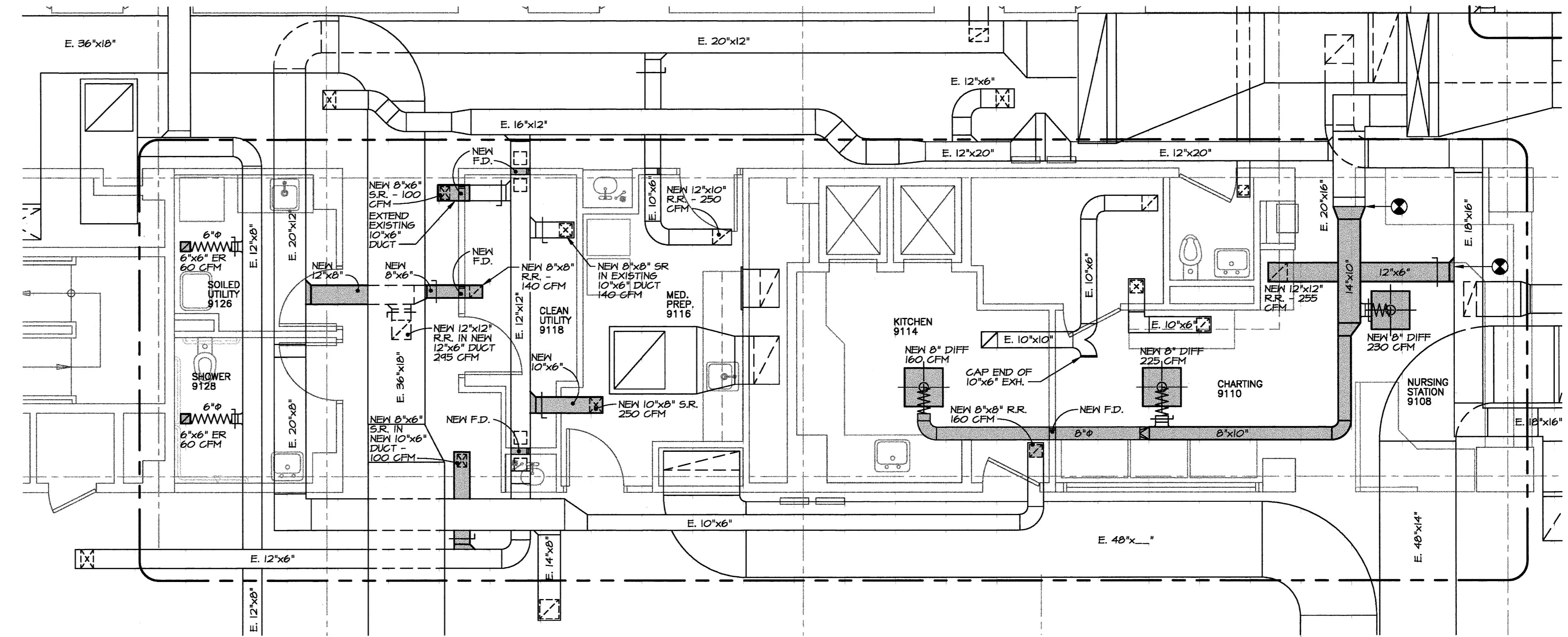
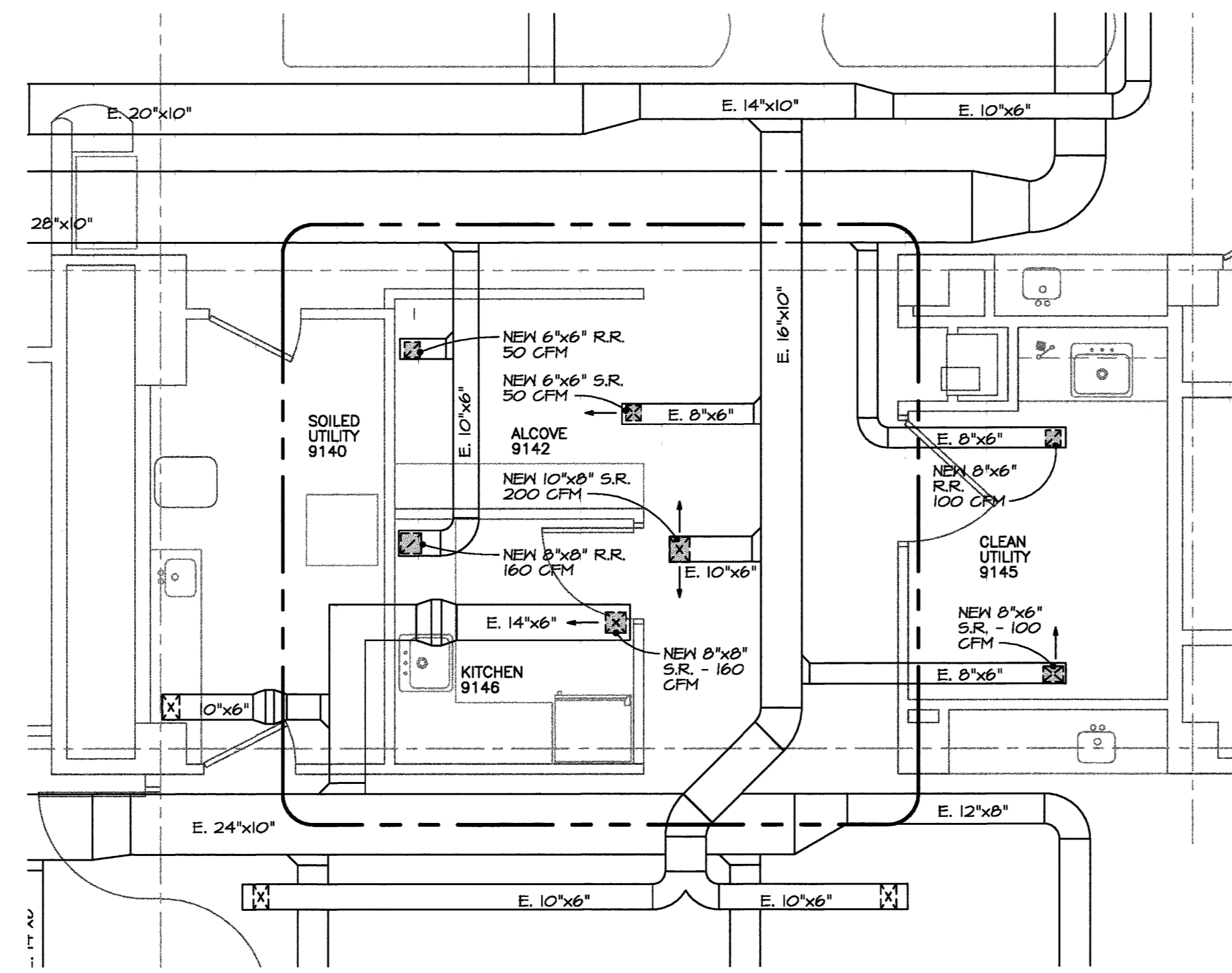


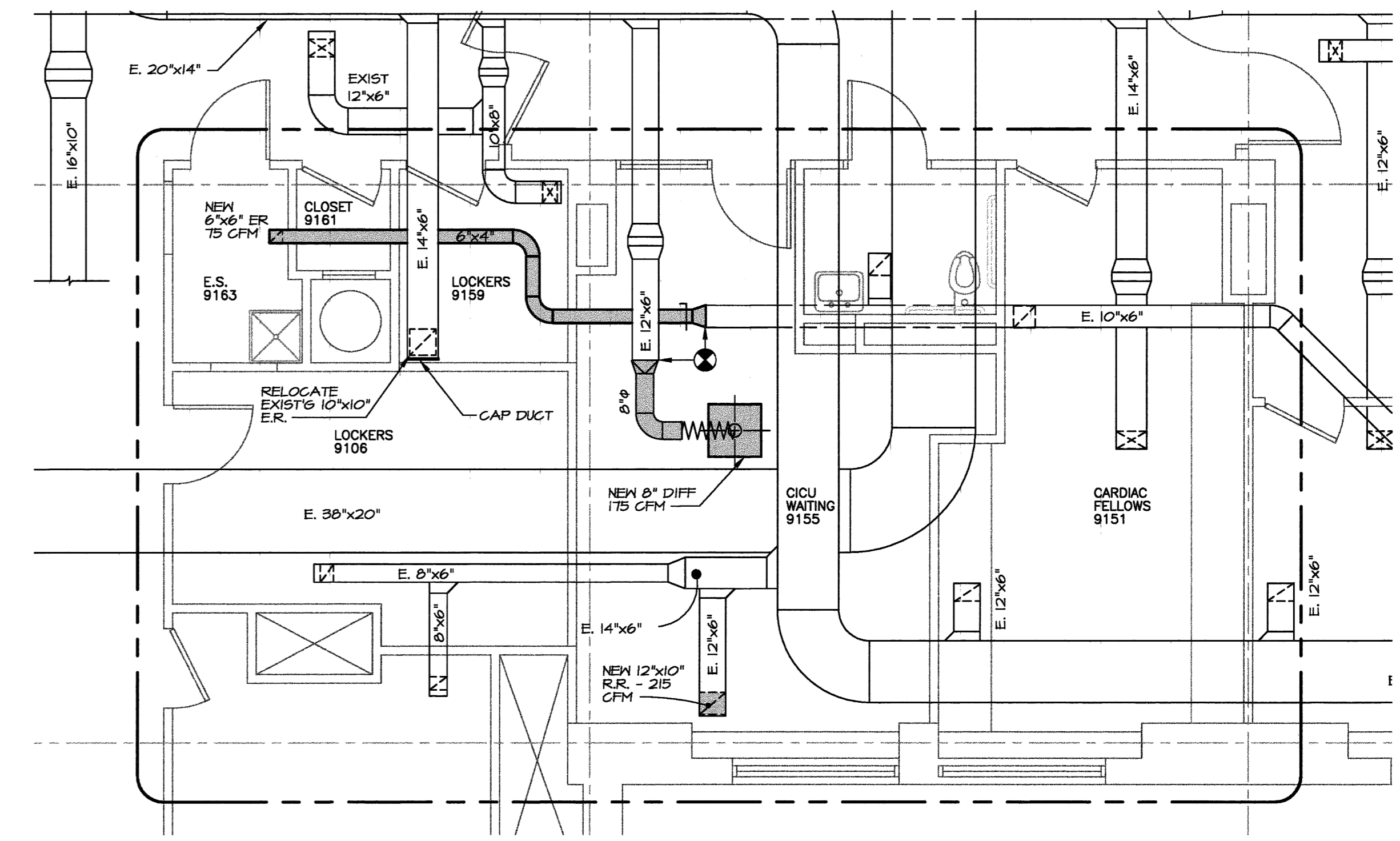
1 **NURSING DIRECTOR AND LOUNGE**
SCALE: 1/4" = 1'-0"



2 **CORE AREAS - WEST**
SCALE: 1/4" = 1'-0"



3 **CORE AREAS - EAST**
SCALE: 1/4" = 1'-0"



4 **LOCKERS AND TRAINING AREAS**
SCALE: 1/4" = 1'-0"

Richards Wing
Ninth Floor
Renovations

Maine Medical Center
Portland, Maine 04102

Architect
Winton Scott Architects
Portland, Maine

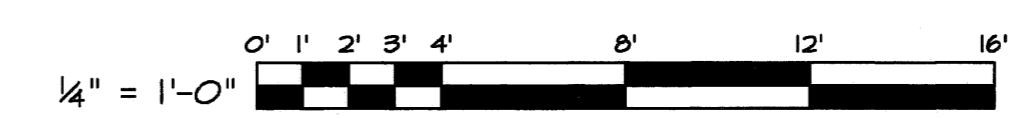
Mechanical Engineering
Mechanical Systems Engineers
Yarmouth, Maine

Electrical Engineering
Swiftcurrent Engineering Services
Yarmouth, Maine

ENLARGED
MECHANICAL
PLANS

M2

Scale: 1/4" = 1'-0"
March 16, 2009



MECHANICAL SYSTEMS ENGINEERS
ROYAL RIVER CENTER, UNIT #10
10 FOREST FALLS DRIVE
YARMOUTH, MAINE 04096
VOICE: (207) 848-1441
FAX: (207) 848-1443
mechsyst@maine.rr.com
© copyright 2009
M.S.E. Proj. 0905

March 17, 2009 1:18 PM
\\Maine\proj\Projects\0905 - Maine Medical R9\Drawings\0905-M2.dwg