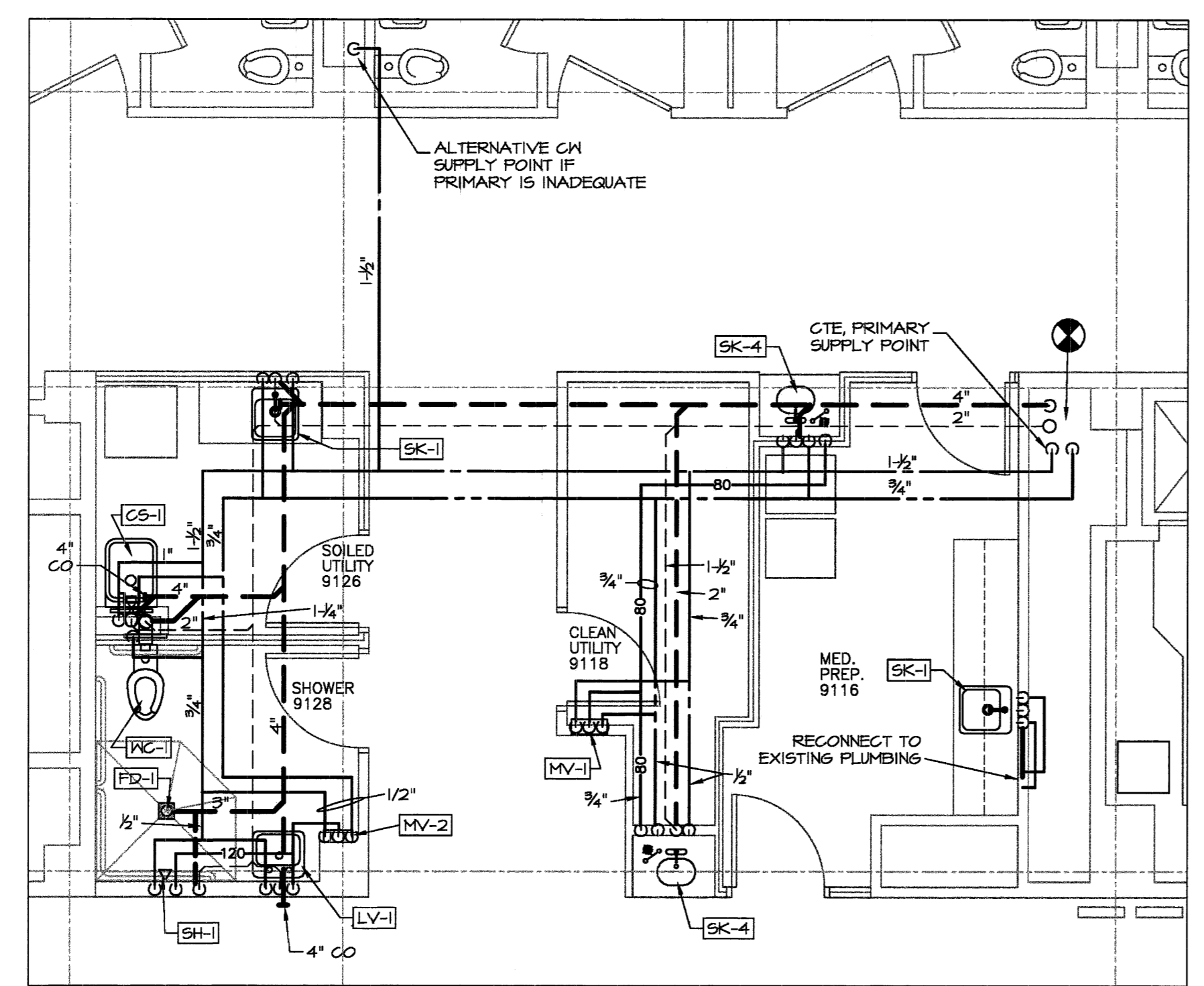


NOTE: ALL WATER AND WASTE PIPING IS LOCATED IN THE CEILING OF THE FLOOR BELOW.

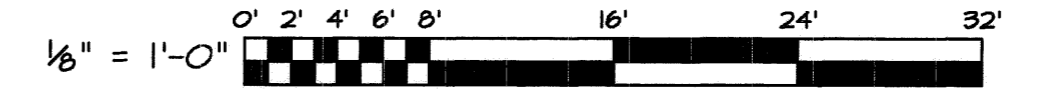


ENLARGED PLUMBING PART PLAN

SCALE: 1/4" = 1'-0"

RICHARDS NINTH FLOOR PLUMBING PLAN

SCALE: 1/8" = 1'-0"



Richards Wing
Ninth Floor
Renovations

Maine Medical Center
Portland, Maine 04102

Architect
Winton Scott Architects
Portland, Maine

Mechanical Engineering
Mechanical Systems Engineers
Yamouth, Maine

Electrical Engineering
Swiftcurrent Engineering Services
Yamouth, Maine

Ninth Floor
Plumbing Plan

P1

Scale: 1/8" = 1'-0"
March 16, 2009

MECHANICAL SYSTEMS ENGINEERS
ROYAL RIVER CENTER, UNIT #10
10 FOREST FALLS DRIVE
YARMOUTH, MAINE 04096
VOICE: (207) 846-1441
FAX: (207) 846-1443
mechsyst@maine.rr.com
© COPYRIGHT 2009
M.S.E. Proj. 0905

March 17, 2009 - 3:27 pm
\\Maine\Projects\0905 Maine Medical R9\Drawings\0905 P1.dwg