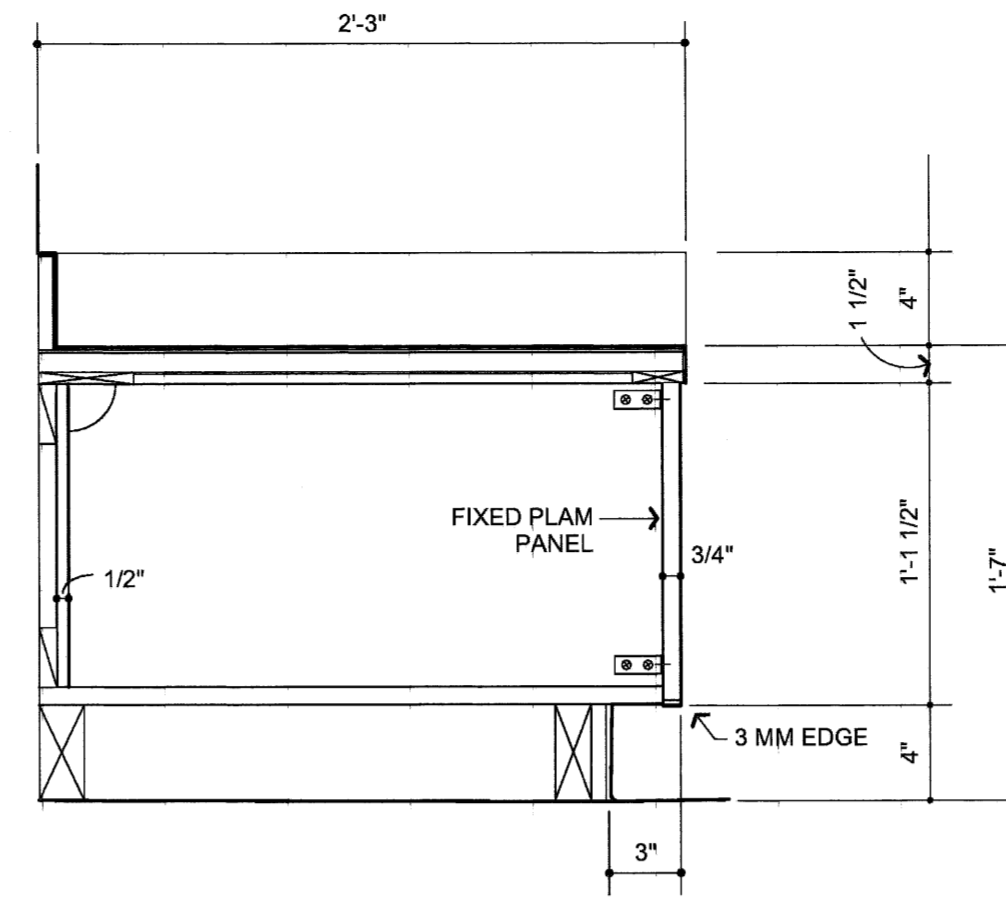
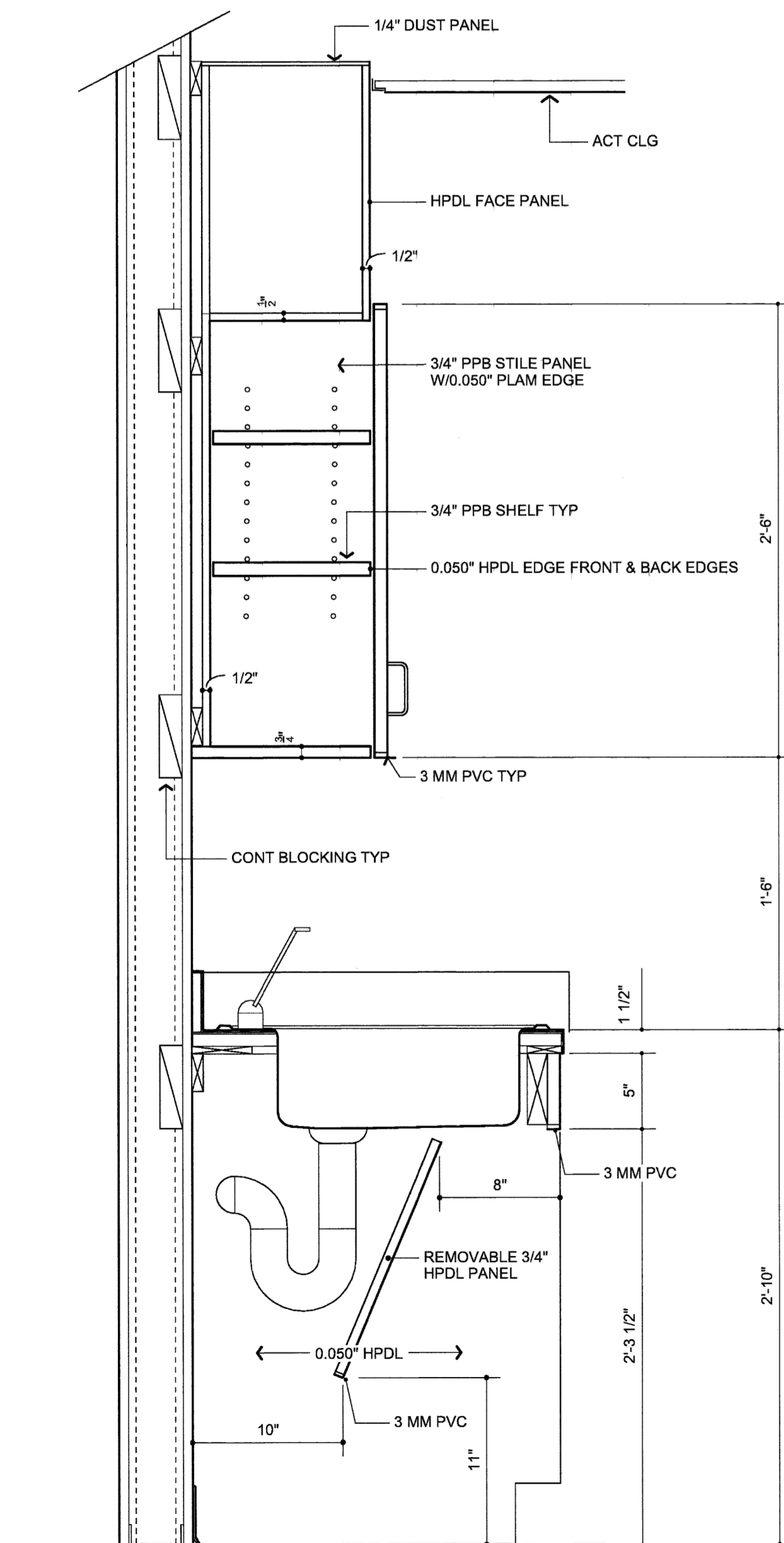


PATIENT ROOM FOOTWALL
 EAST ELEV ROOMS 913, 915, 917, 919, 920, 922, 924
 OPP HAND @ WEST ELEVS. ROOMS 914, 916, 918, 921, 923

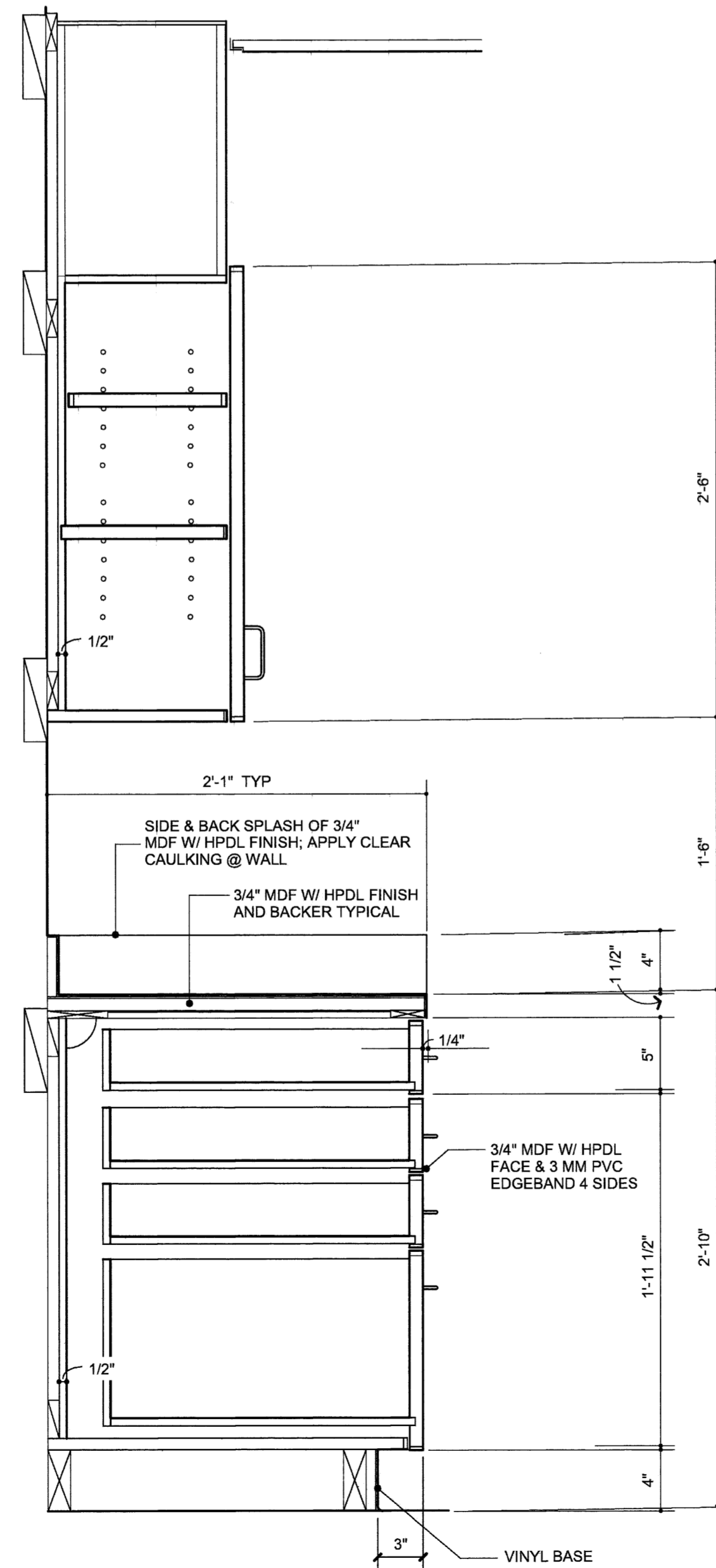


5 REFRIGERATOR BASE SECTION
 1 1/2" = 1'-0"

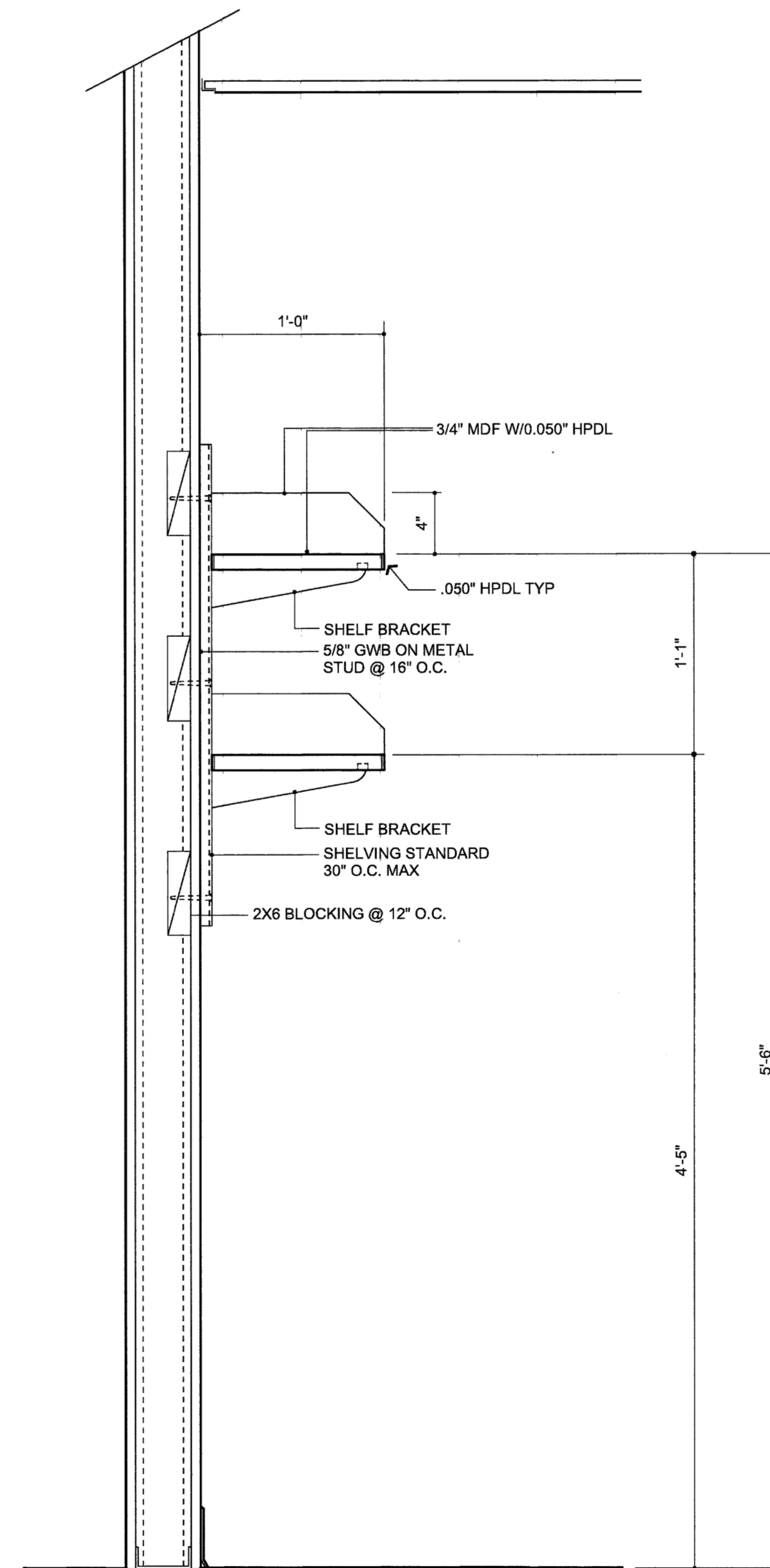
Materials and Hardware	
PLAM COUNTERS	PIONITE "THYME FIBER" AV721 SUEDE
PLAM CASEWORK	PIONITE "GREIGE" SG210 SUEDE
PLAM ADJ SHELVES	PIONITE "GREIGE" SG210 SUEDE @ ALL FACES
3MM PVC EDGING	CHARTER INDUSTRIES TO MATCH "GREIGE" PROVIDE AT DRAWERS, DOORS AND EXPOSED CASEWORK EDGES
SOLID SURFACING (SSM)	CORIAN "NIGHT SKY"
MAG PLAM	"MAGNETICO" MARKER BOARD BY ABET LAMINATI (WHITE)
BULLETIN BOARDS (BB)	FORBO #2187 1/4" TH TACKABLE GRANULATED CORK LINOLEUM SHEET
CABINET AND DRAWER PULLS	IVES #38 B10B
CABINET HINGES	BLUM SERIES 125 SELF CLOSING
DRAWER SLIDES	ACCURIDE 150#
METAL COUNTER BRACKETS	A&M HARDWARE (15 X 21 POWDER COATED BLACK)
ADJ. SHELVING STANDARDS	KV 87
ADJ. SHELVING BRACKETS	KV 187
COUNTER GROMMETS	BLACK - PROVIDE @ 5" O.C. MAX



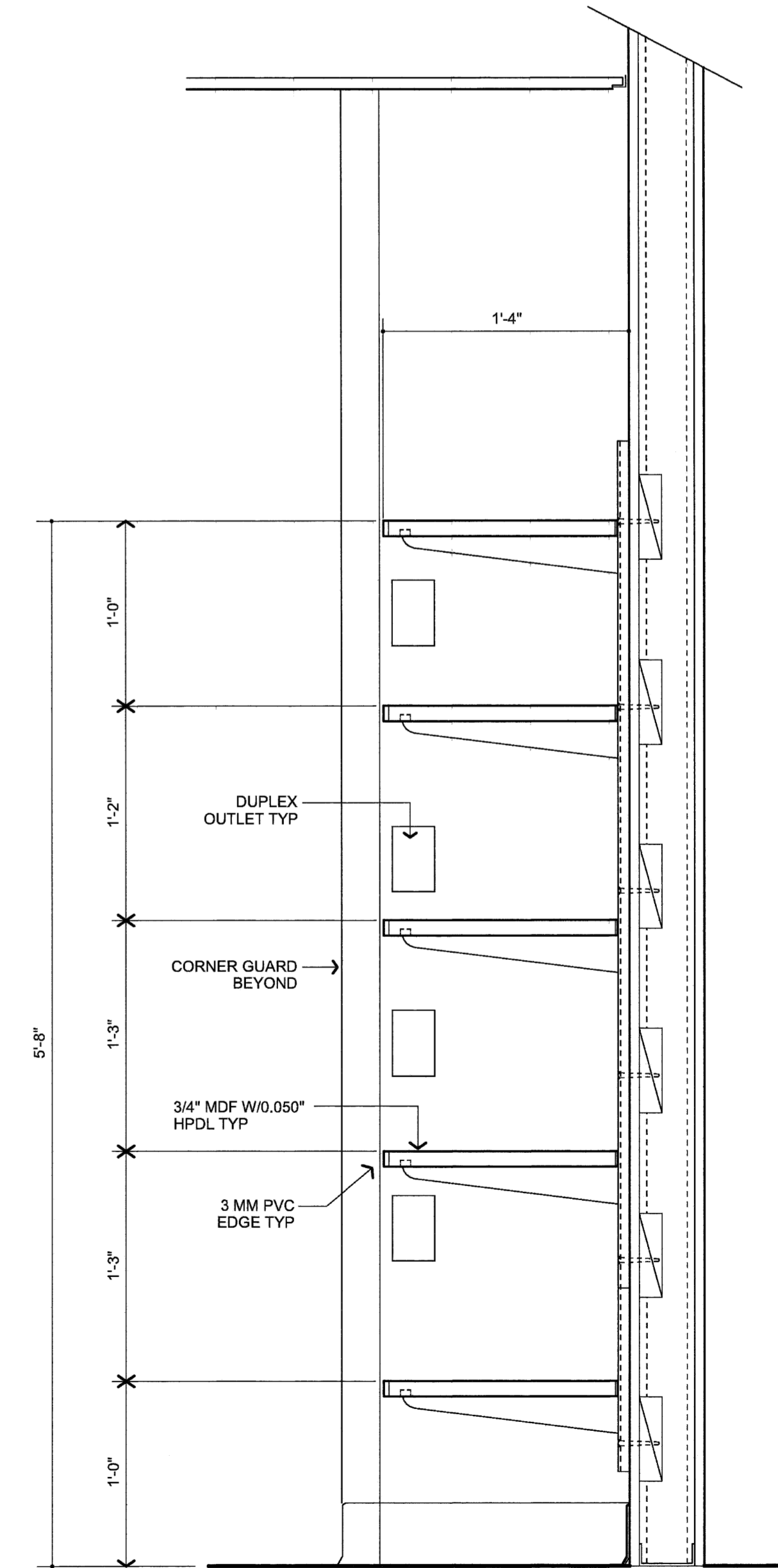
1 SINK AND WALL CABINET SECTION
 1 1/2" = 1'-0"



2 BASE CABINET SECTION
 1 1/2" = 1'-0"



3 ADJUSTABLE WALL SHELVING
 1 1/2" = 1'-0"



4 DEFIBRILLATOR ALCOVE SHELVING
 1 1/2" = 1'-0"

Richards Wing
 Ninth Floor

Renovations

Maine Medical Center
 Portland, Maine 04102

Architect
 Winton Scott Architects
 Portland, Maine

Mechanical Engineering
 Mechanical Systems Engineers
 Yarmouth, Maine

Electrical Engineering
 Swiftcurrent Engineering Services
 Yarmouth, Maine

Interior
 Details

A 4.1

Scale: As Shown

March 16, 2009