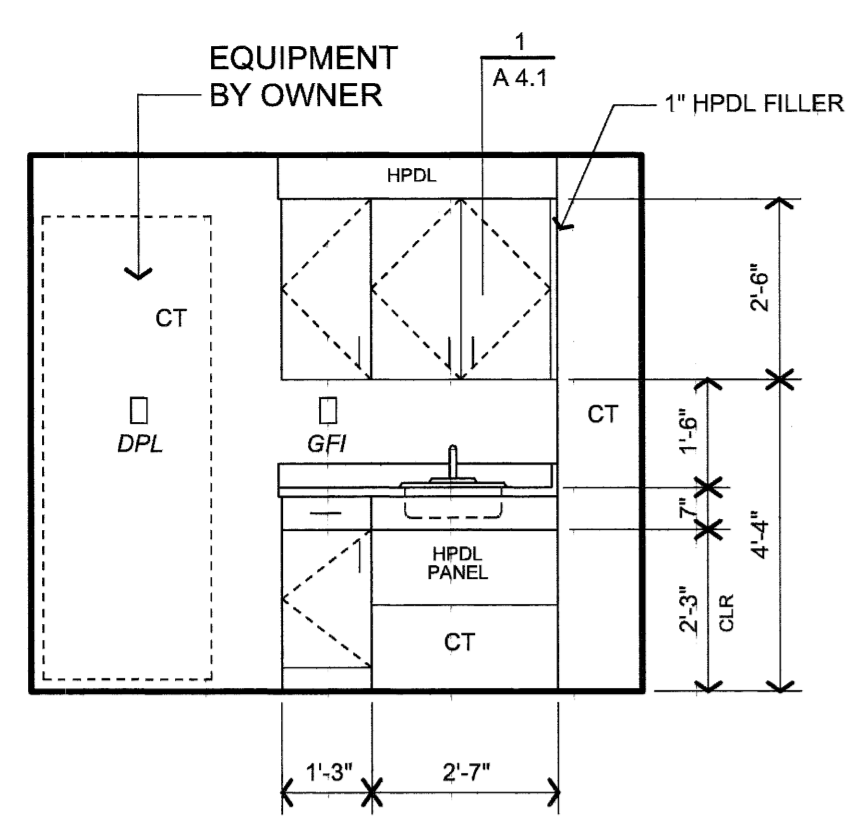
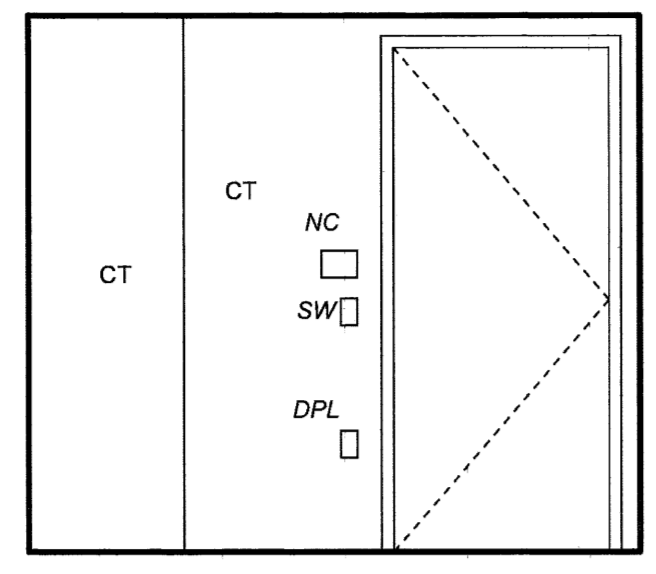


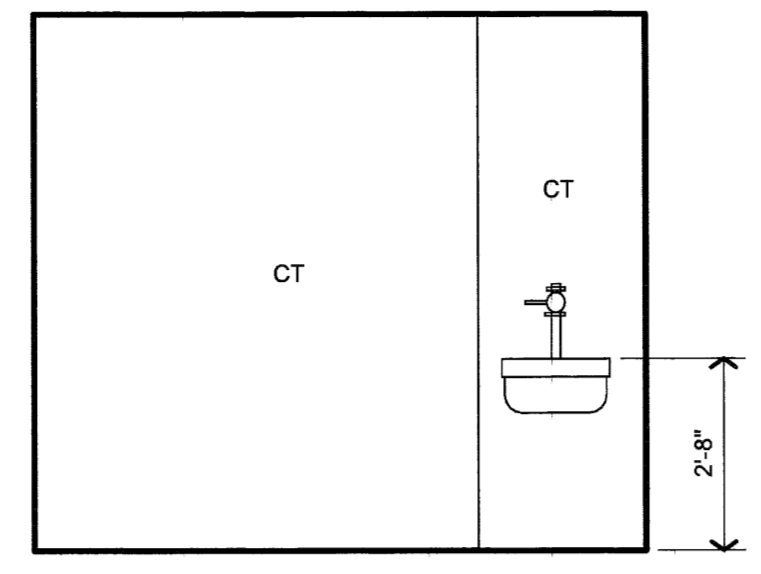
Mark M. Wilcox



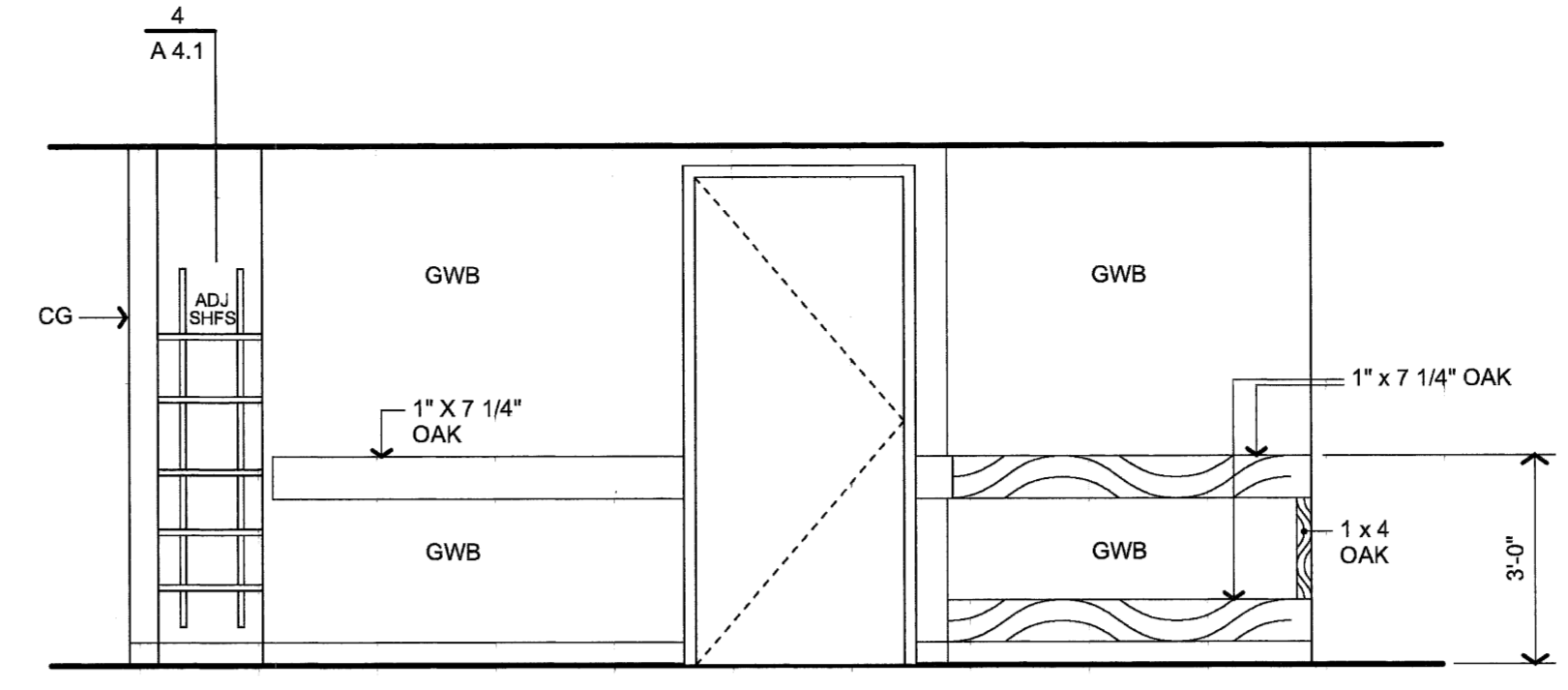
16 SOILED UTILITY
 ROOM 9126 NORTH



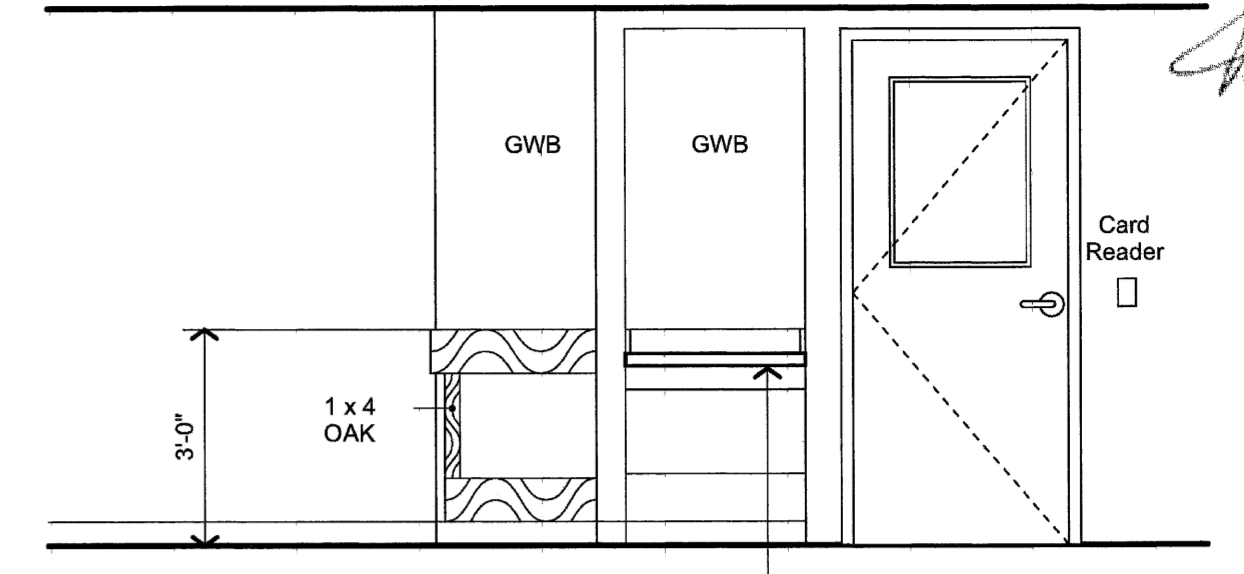
17 SOILED UTILITY
 ROOM 9126 EAST



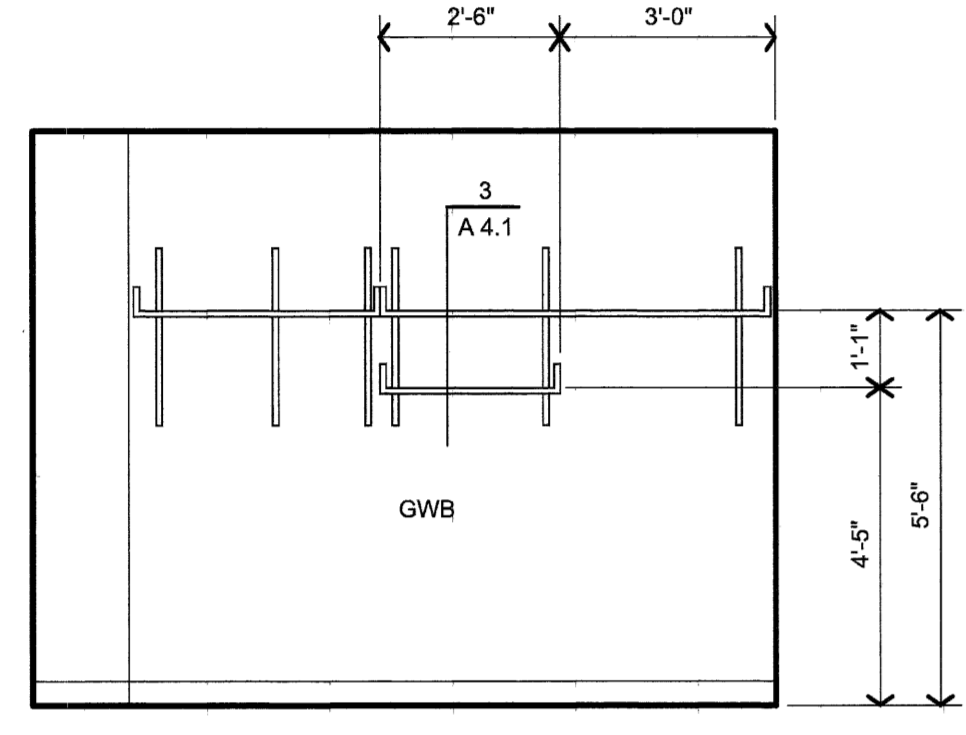
18 SOILED UTILITY
 ROOM 9126 SOUTH



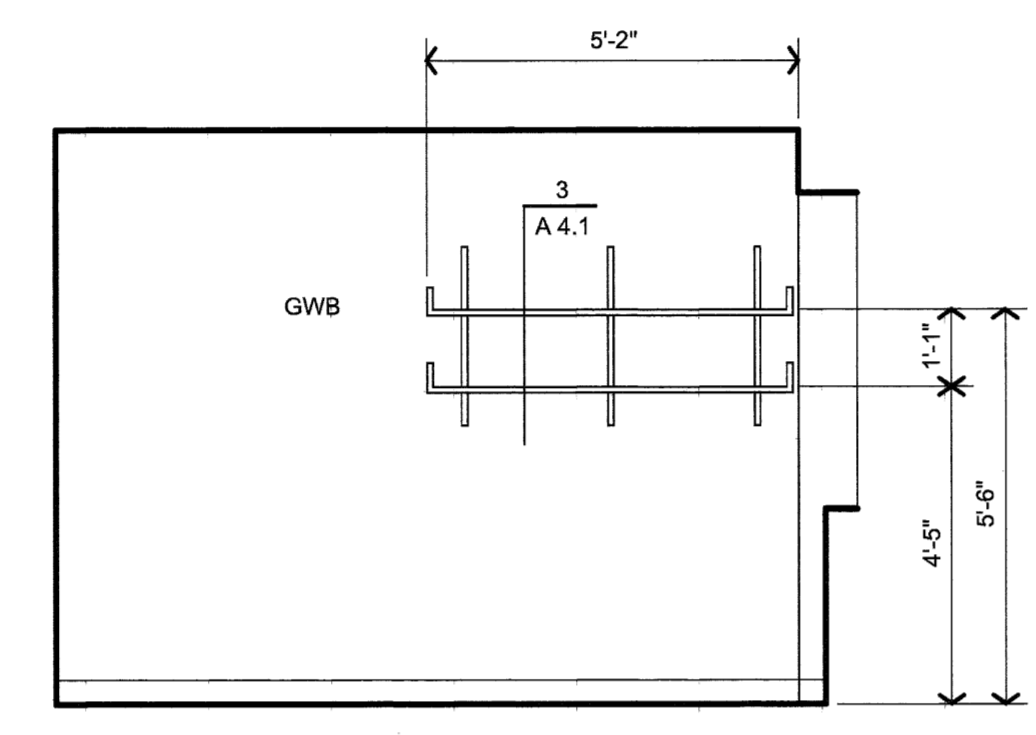
19 CORRIDOR
 ROOM DC-901 EAST



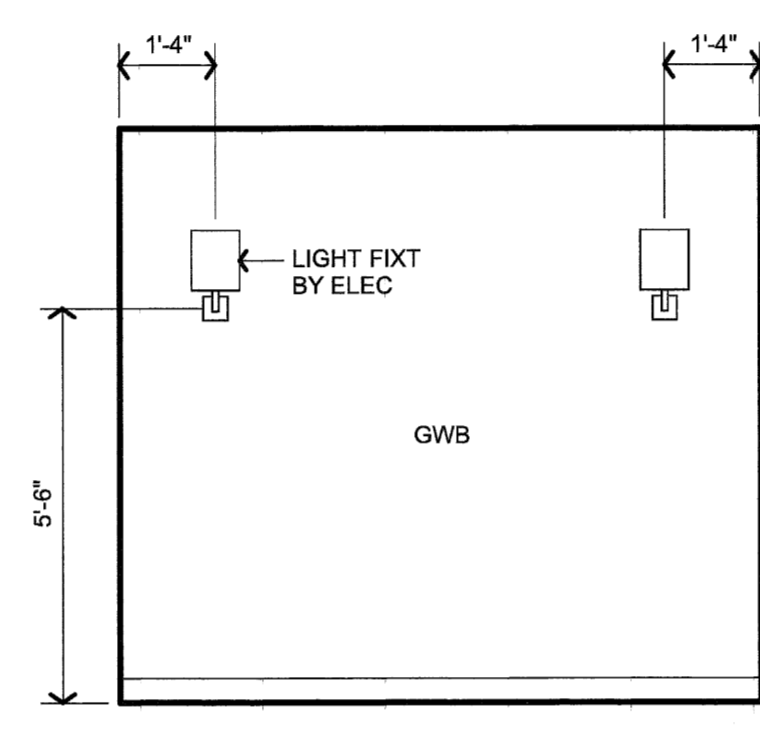
20 CORRIDOR
 ROOM GC-905 NORTH



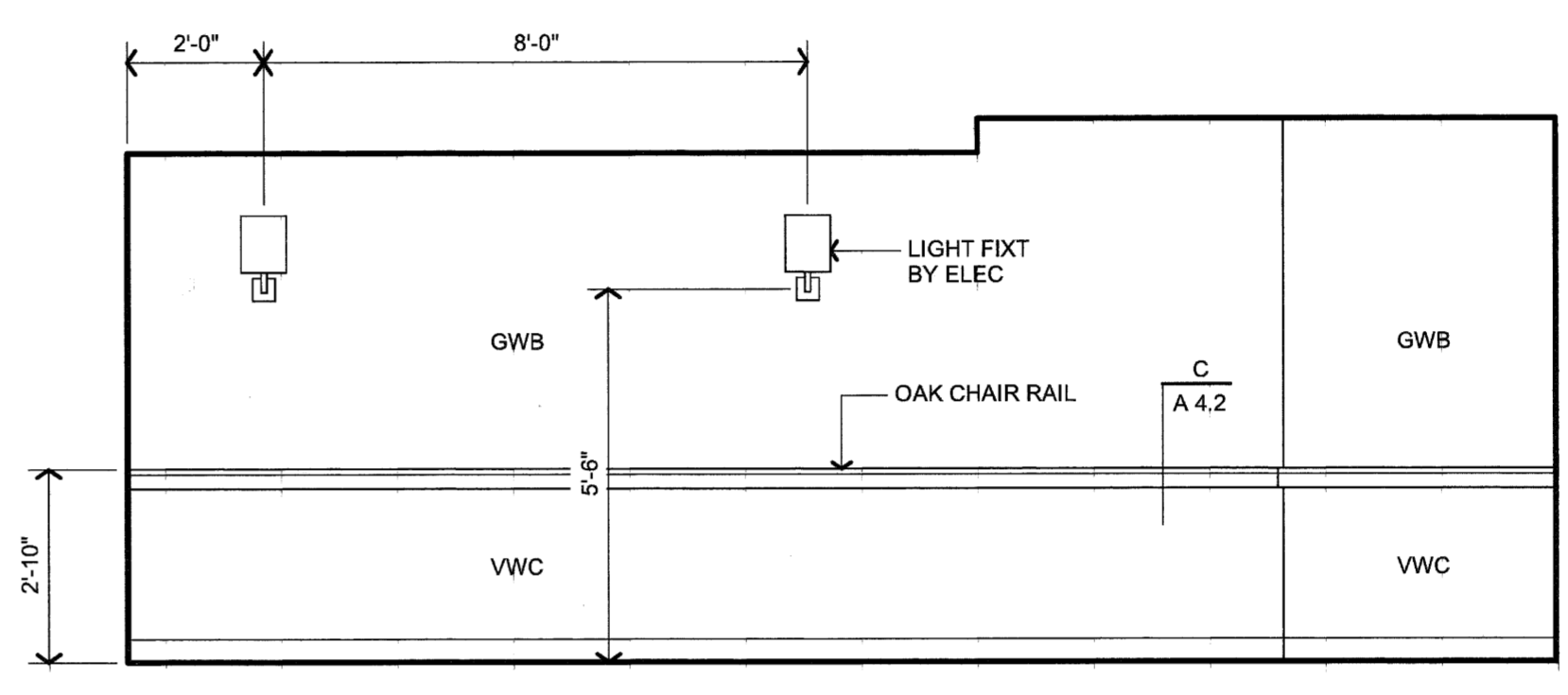
21 ADMIN ASST
 ROOM 9131A WEST



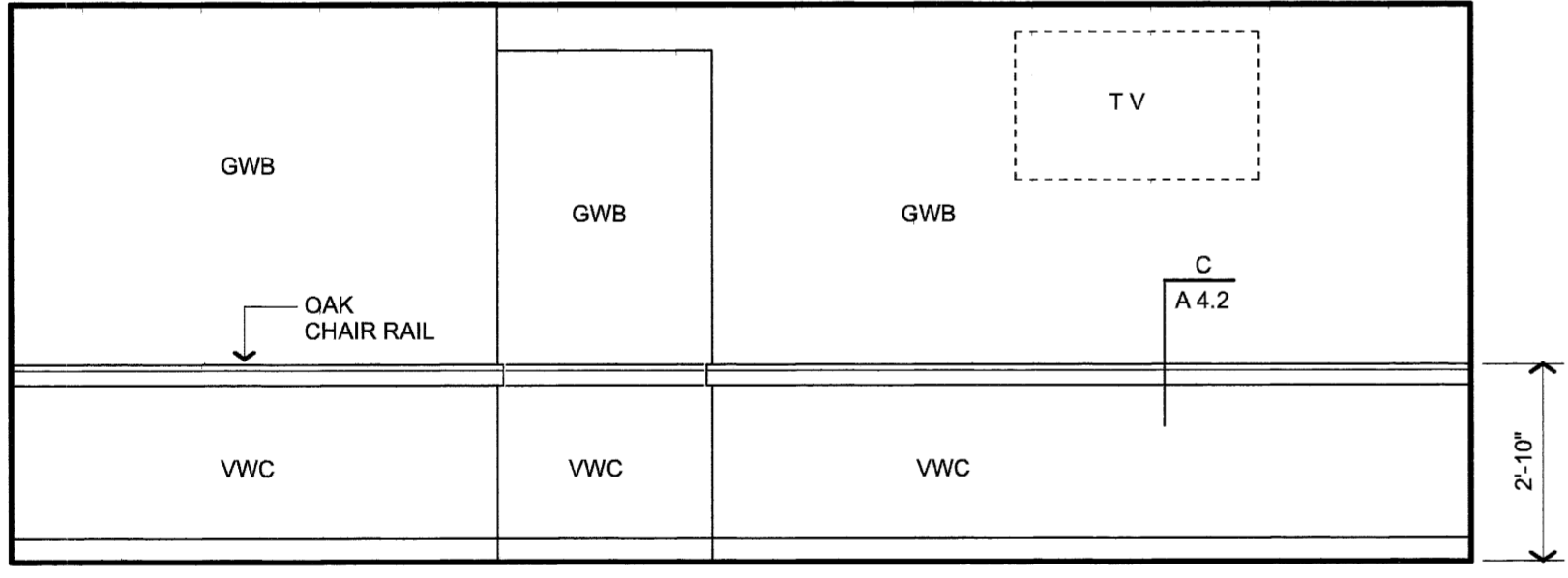
22 NURSING DIRECTOR
 ROOM 9131B WEST



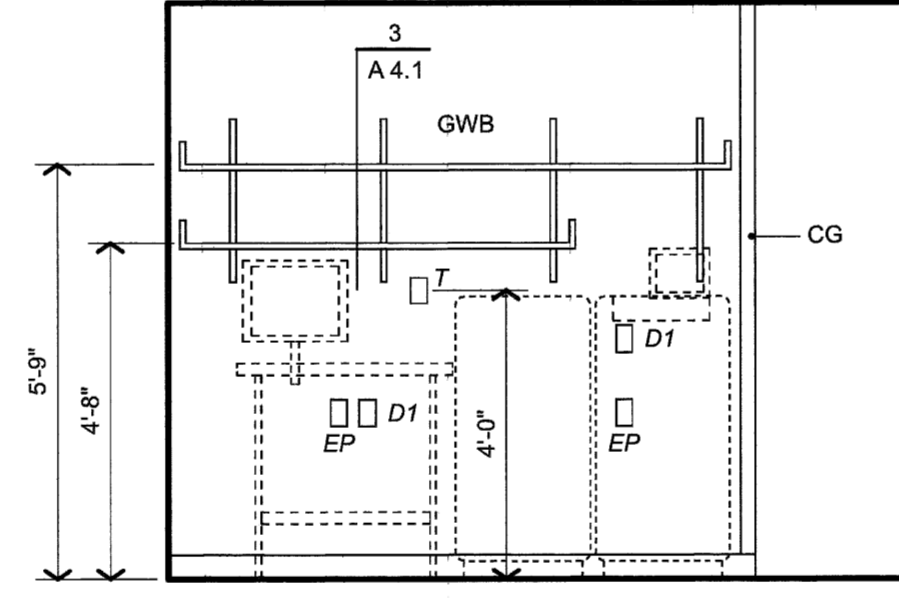
23 QUIET / CONSULT ROOM
 ROOM 9104 EAST



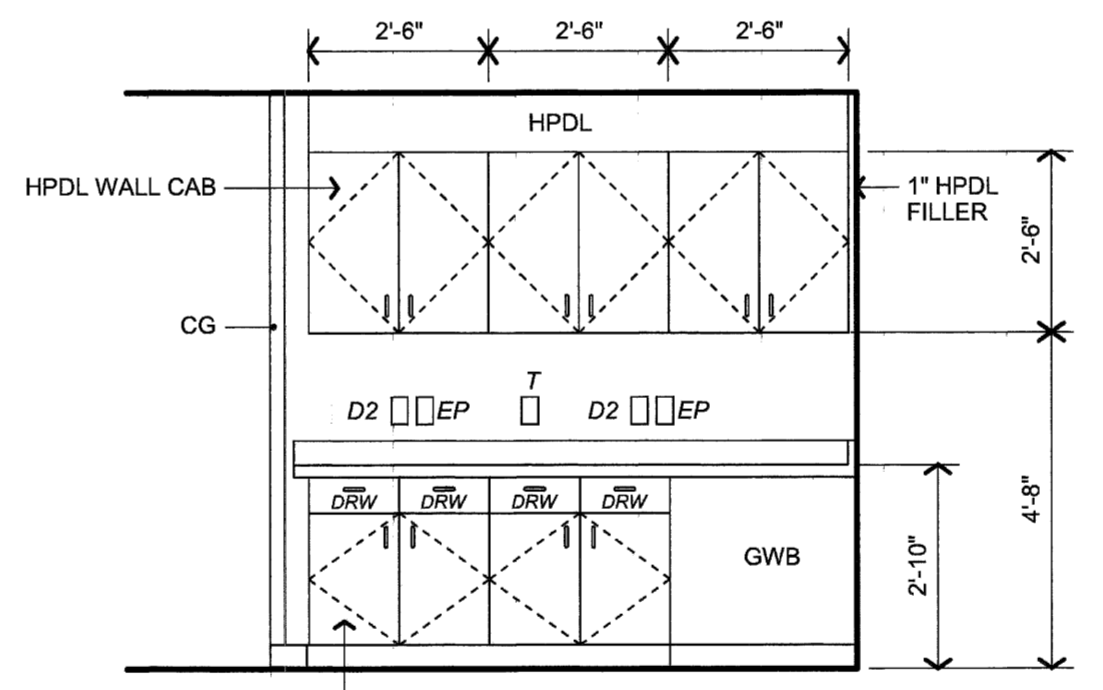
24 ICU WAITING
 ROOM 9155 WEST



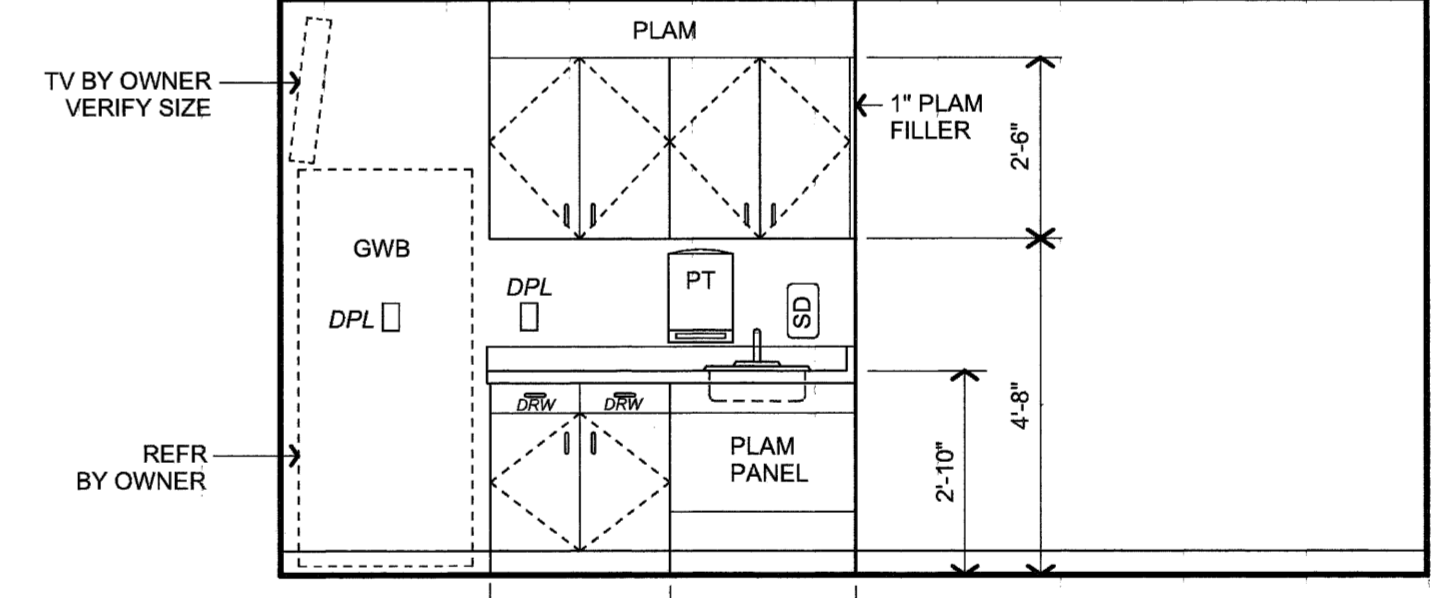
25 ICU WAITING
 ROOM 9155 EAST



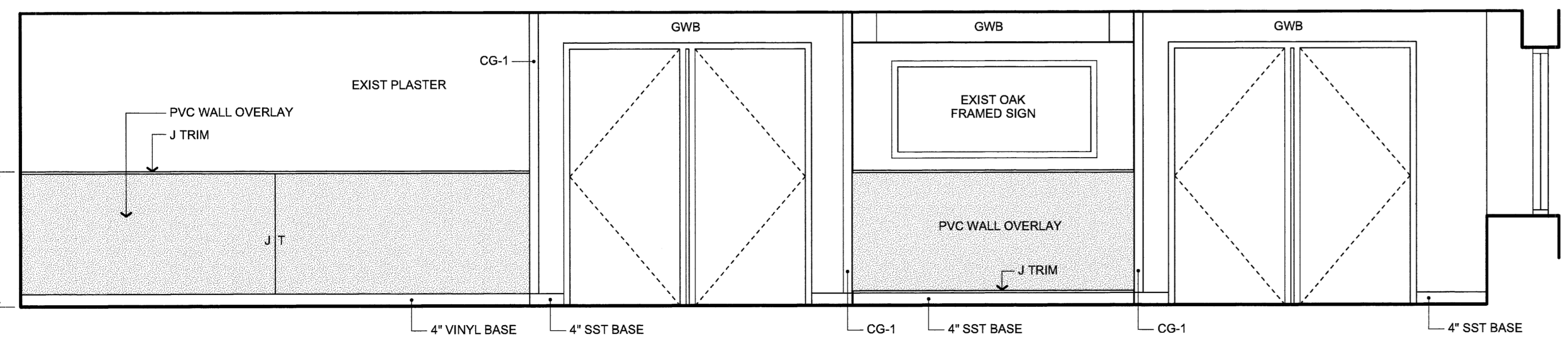
26 ALCOVE
 ROOM 9142 NORTH



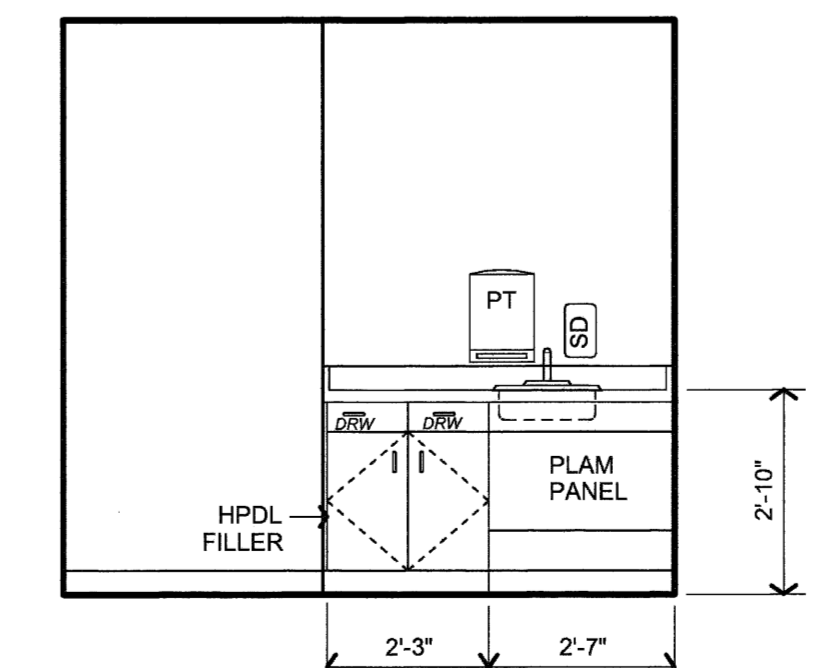
27 ALCOVE
 ROOM 9142 SOUTH



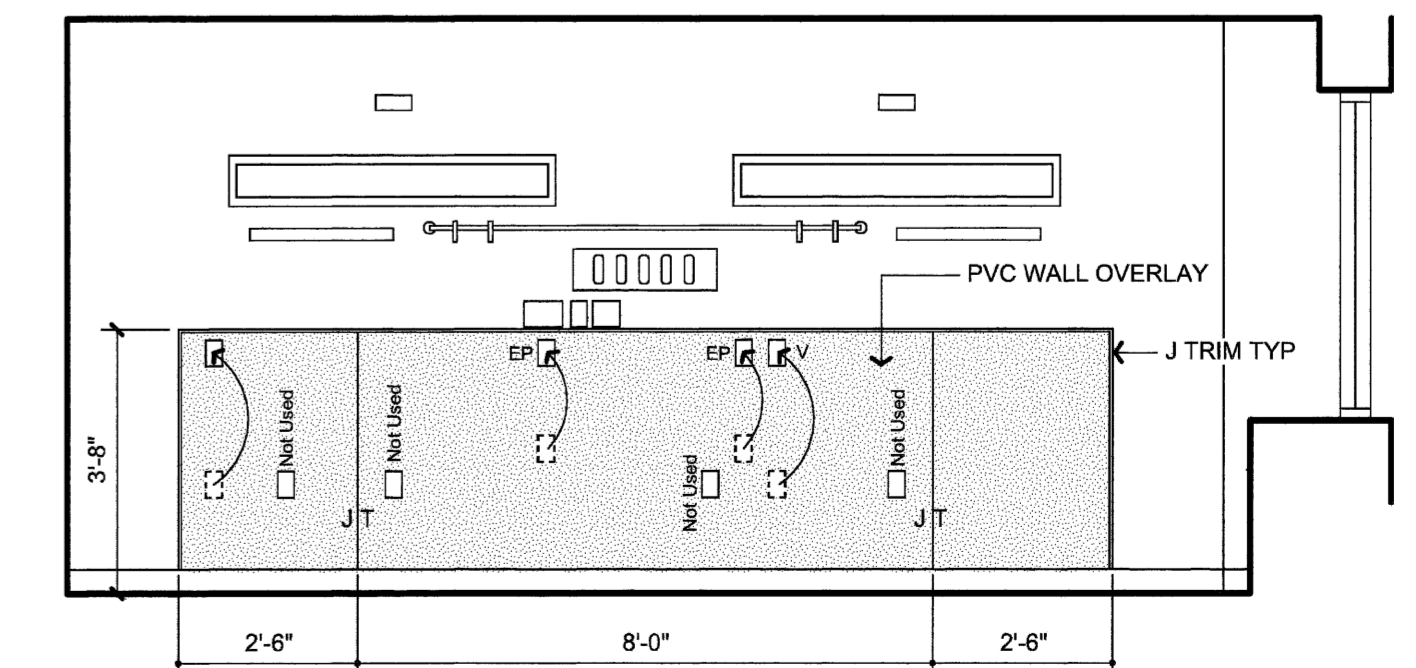
28 TRAINING & NURSES LOUNGE
 ROOM 9135 EAST



29 PUBLIC ELEVATORS
 ROOM GC-908 SOUTH



30 CLEAN UTILITY
 ROOM 9145 NORTH



31 PATIENT ROOM HEADWALL
 WEST ELEV ROOMS 913, 915, 917, 919, 920, 922, 924
 OPP HAND @ EAST ELEV. ROOMS 914, 916, 918, 921, 923

Richards Wing
 Ninth Floor

Renovations

Maine Medical Center
 Portland, Maine 04102

Architect
 Winton Scott Architects
 Portland, Maine

Mechanical Engineering
 Mechanical Systems Engineers
 Yarmouth, Maine

Electrical Engineering
 Switchcurrent Engineering Services
 Yarmouth, Maine

Interior Elevations

A 3.2