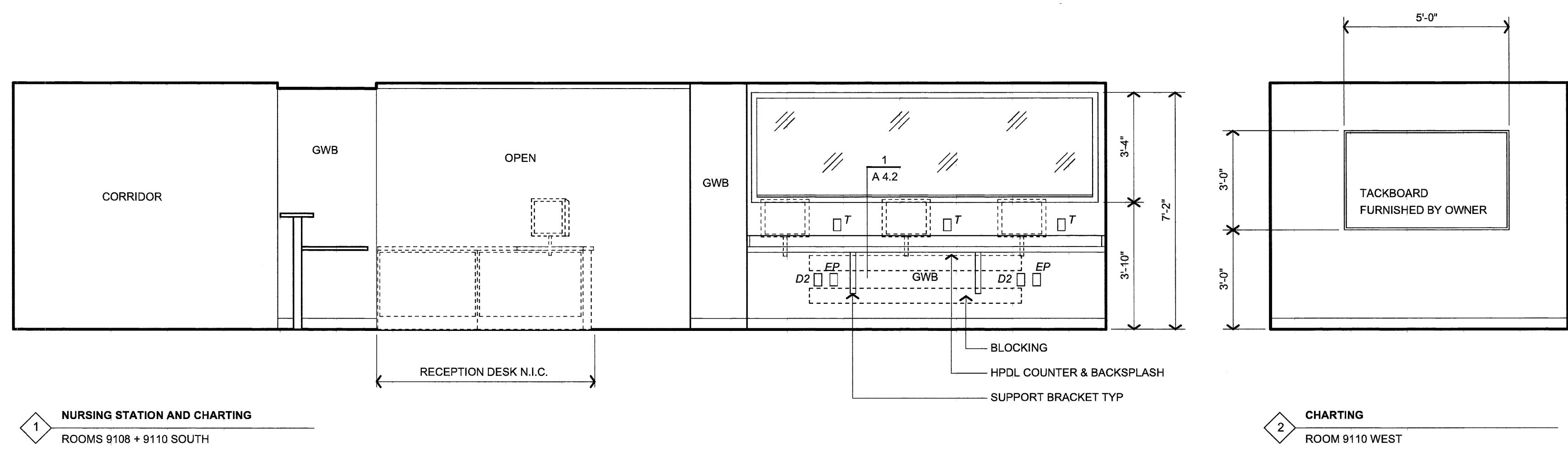
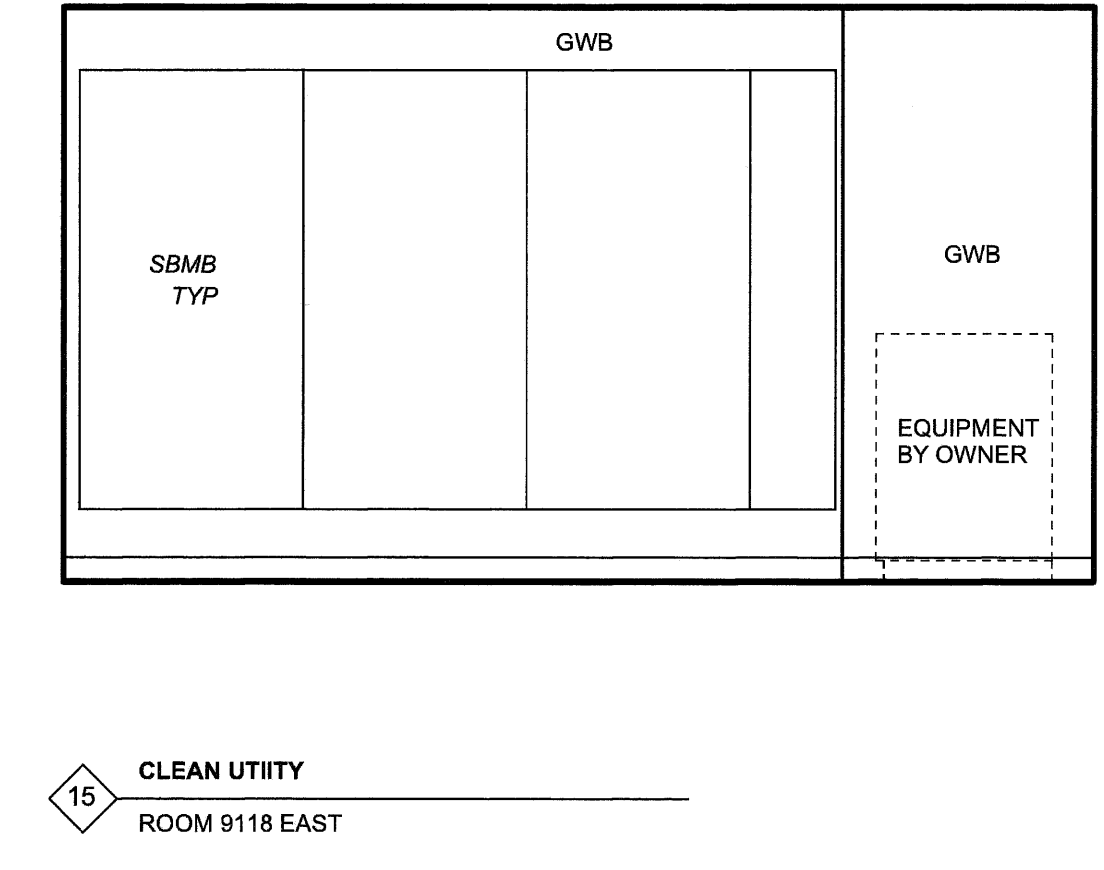
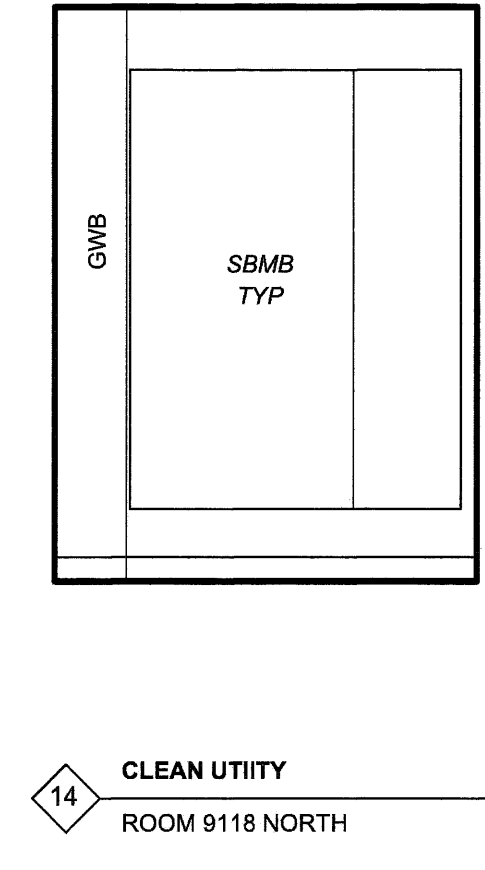
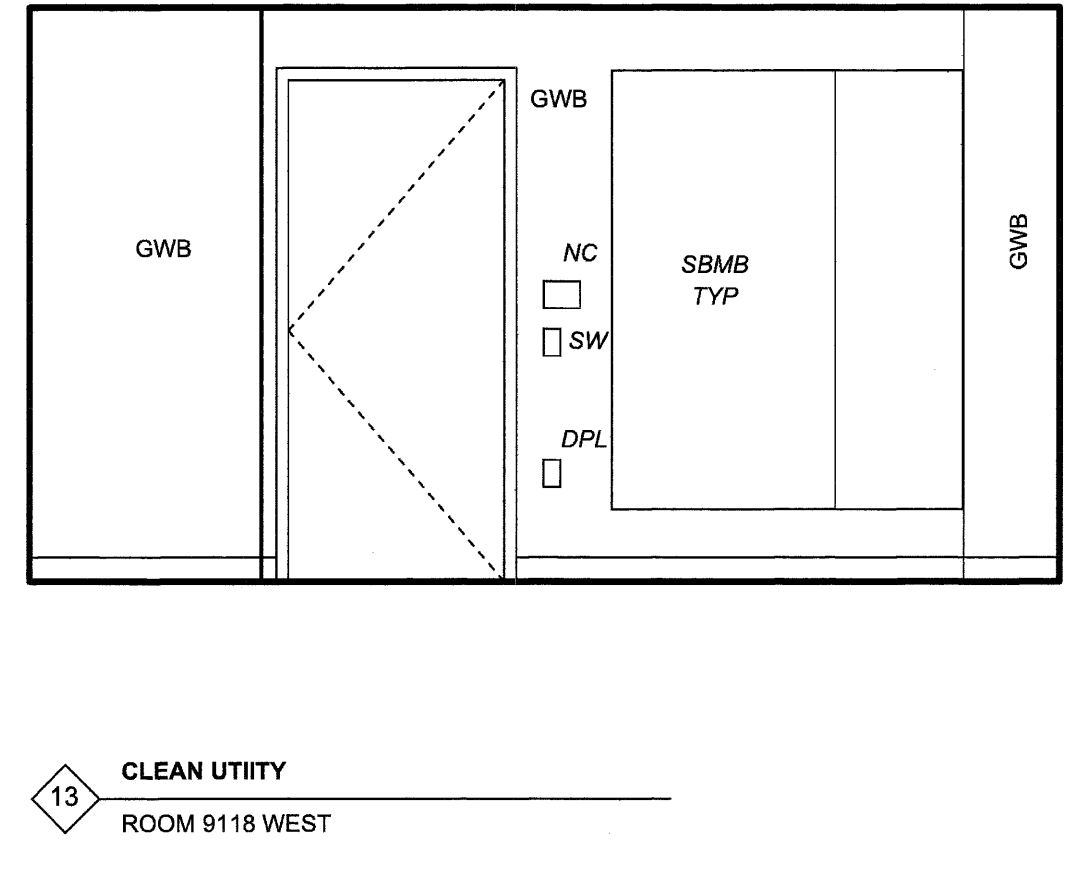
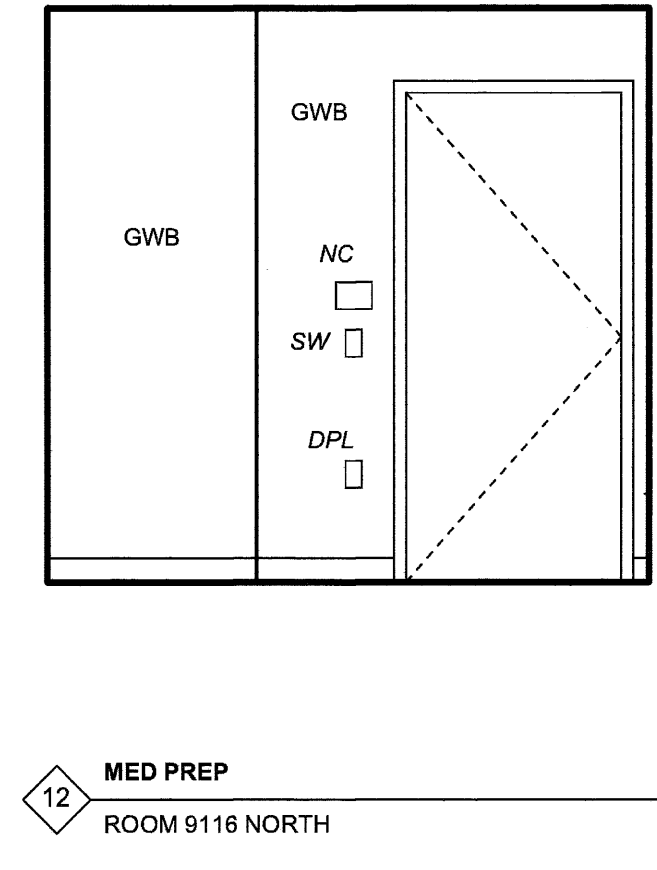
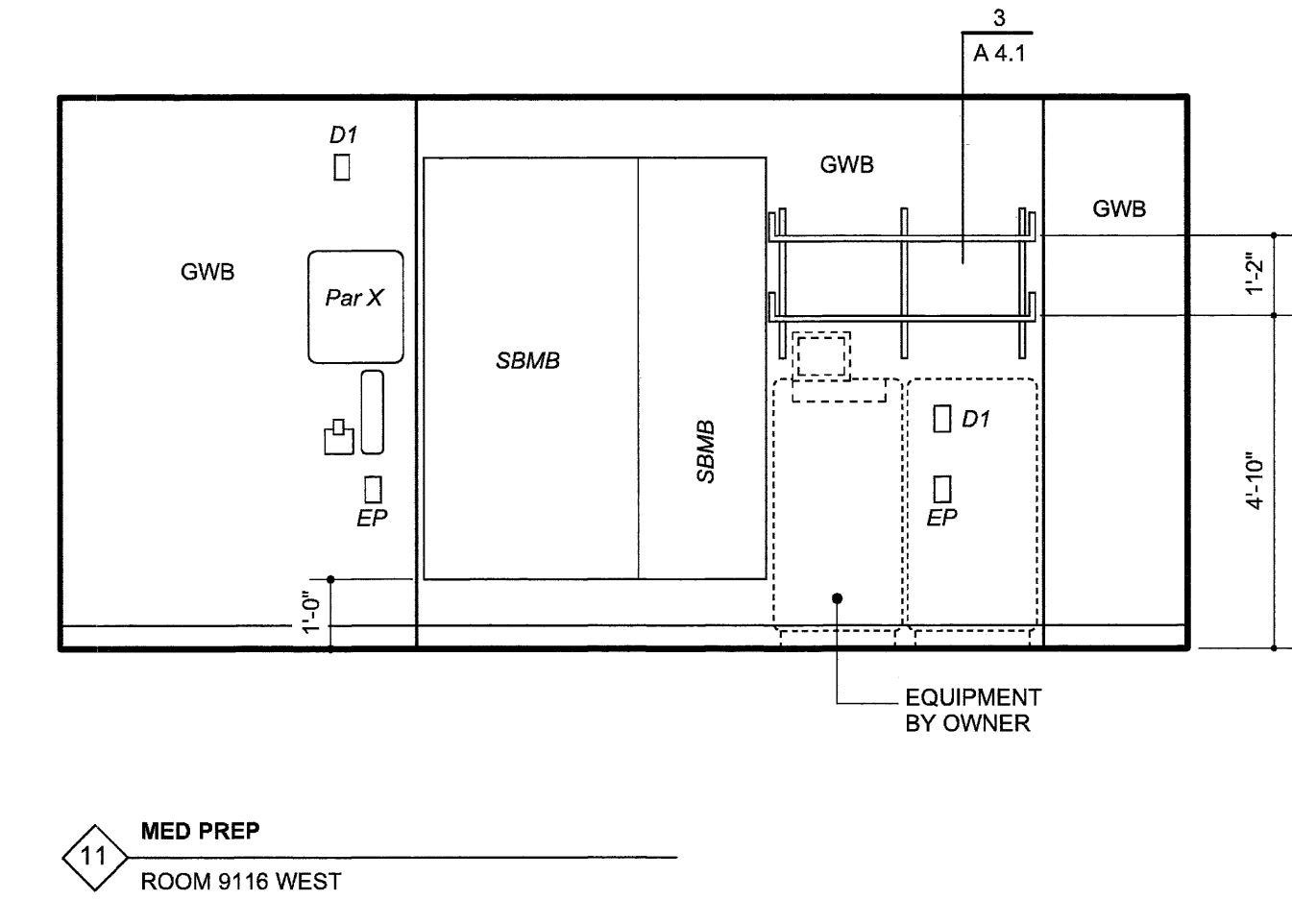
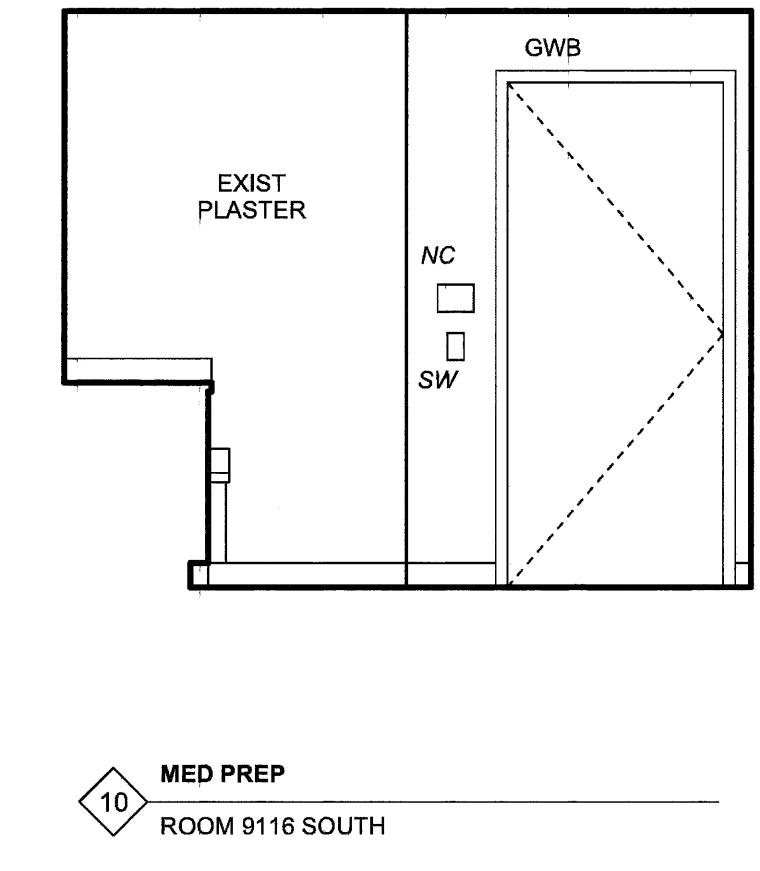
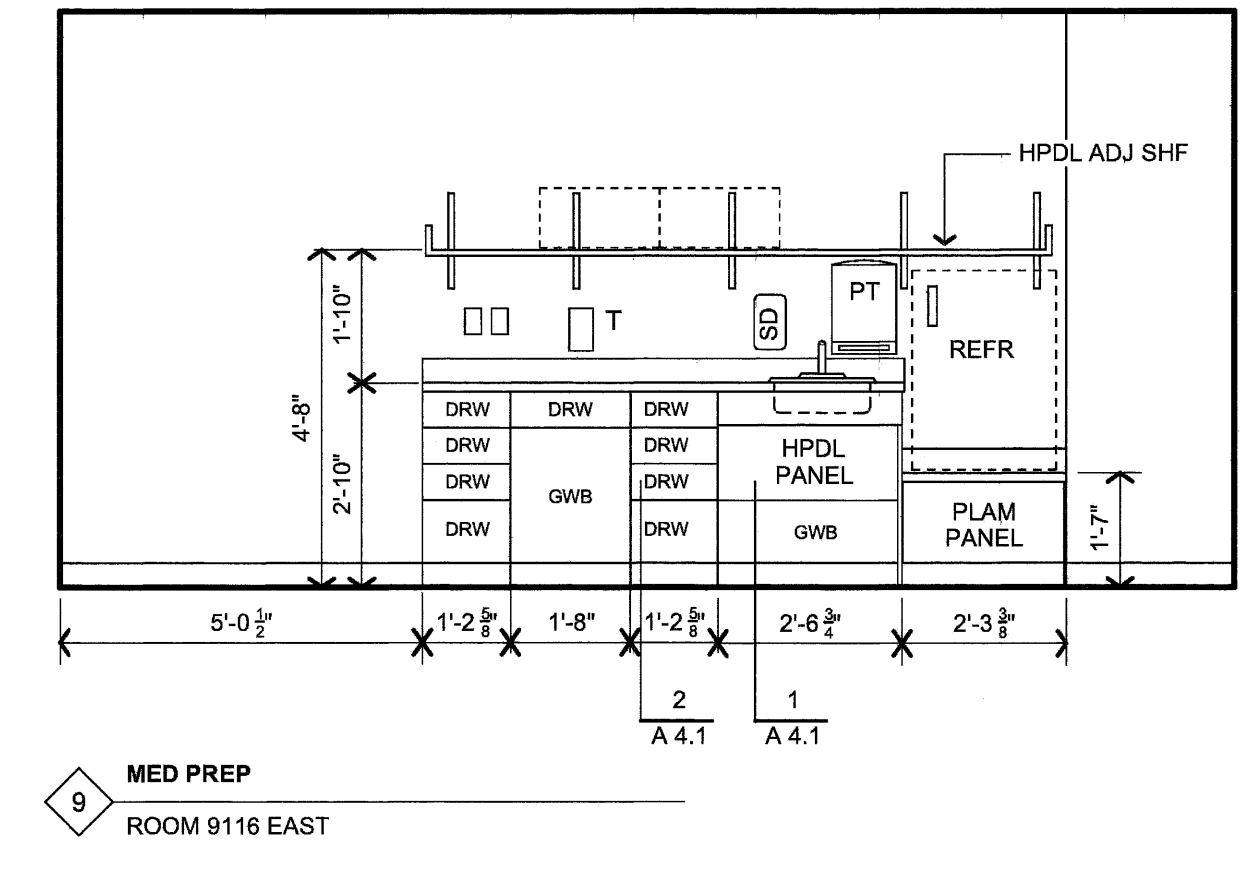
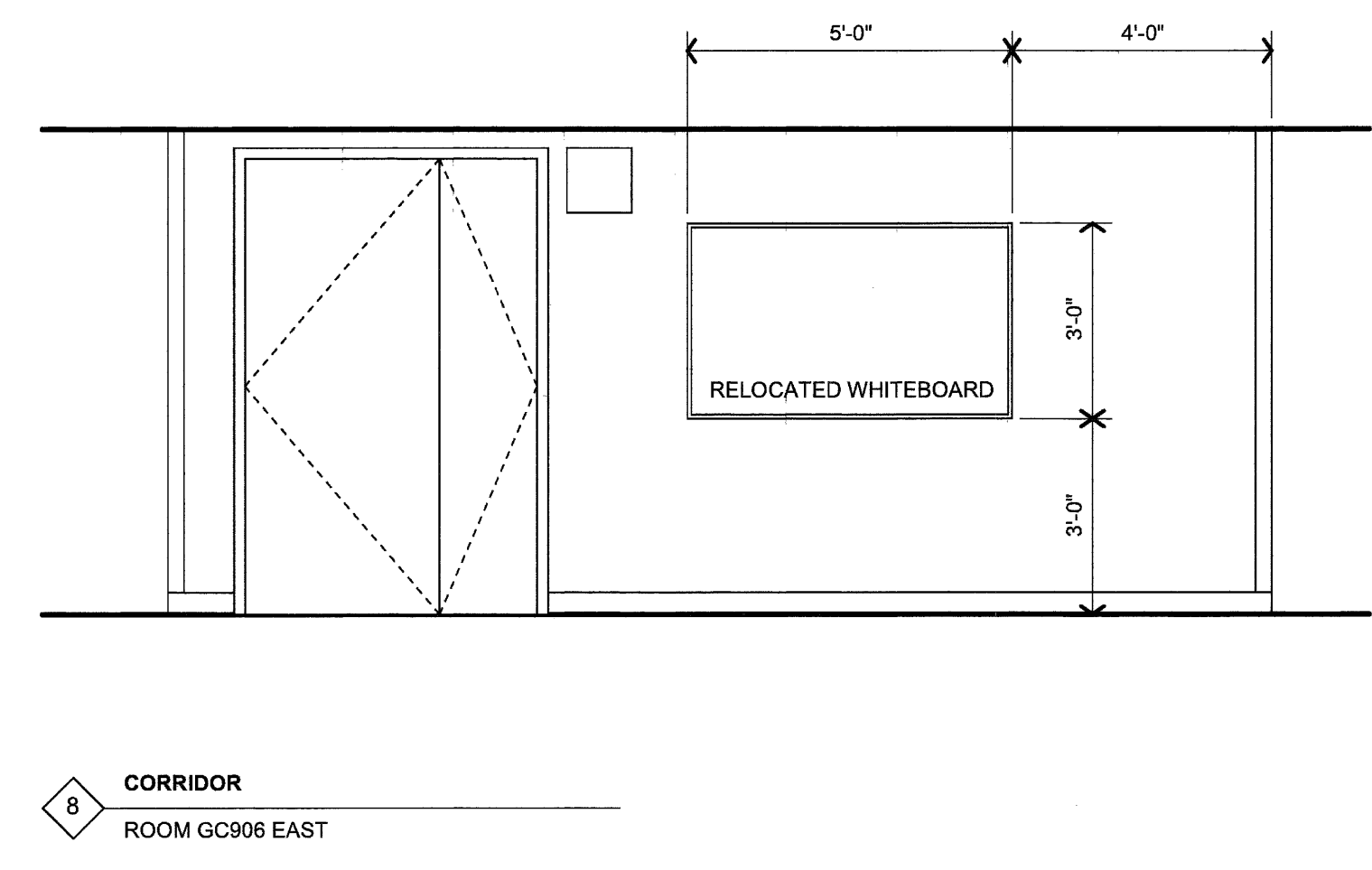
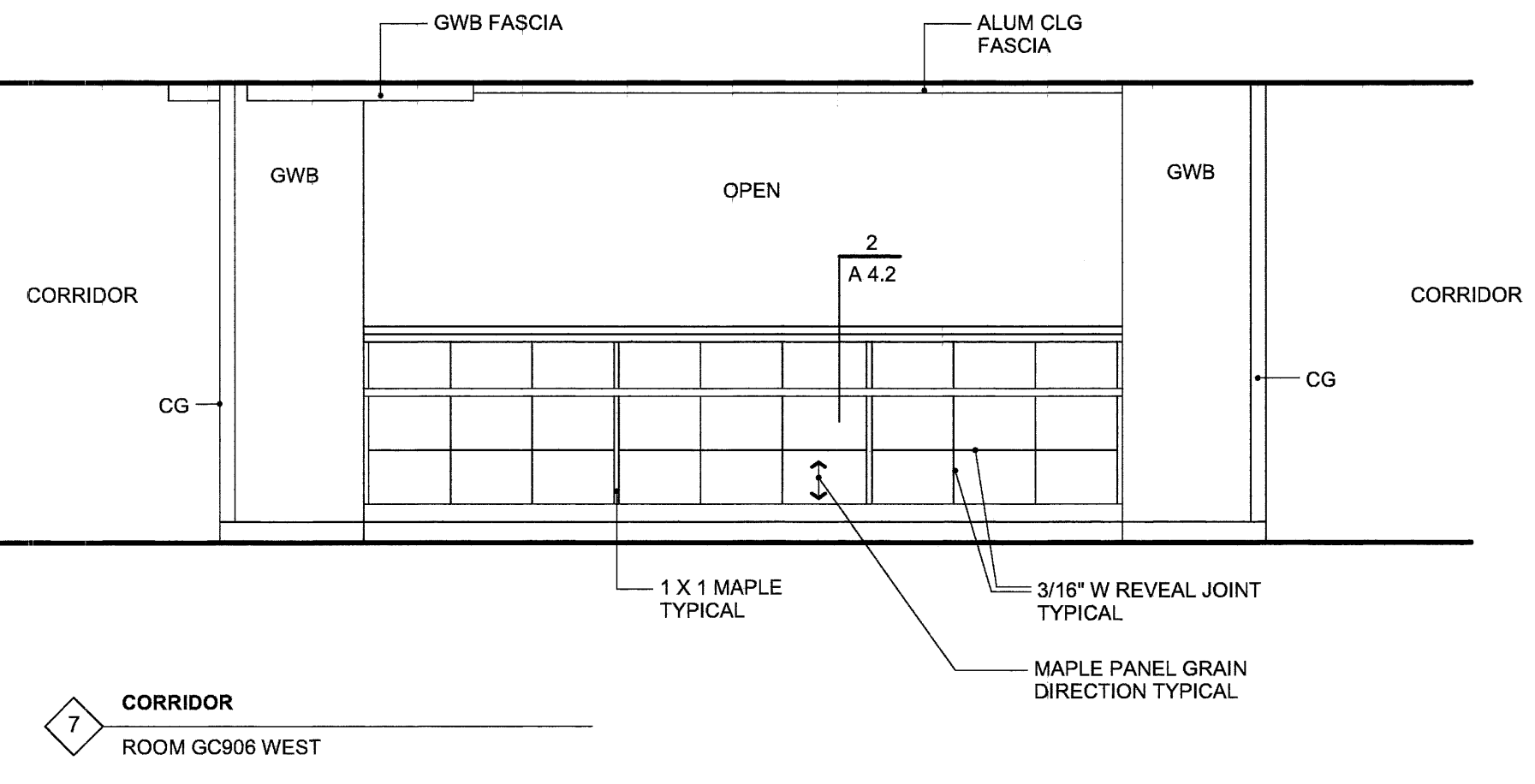
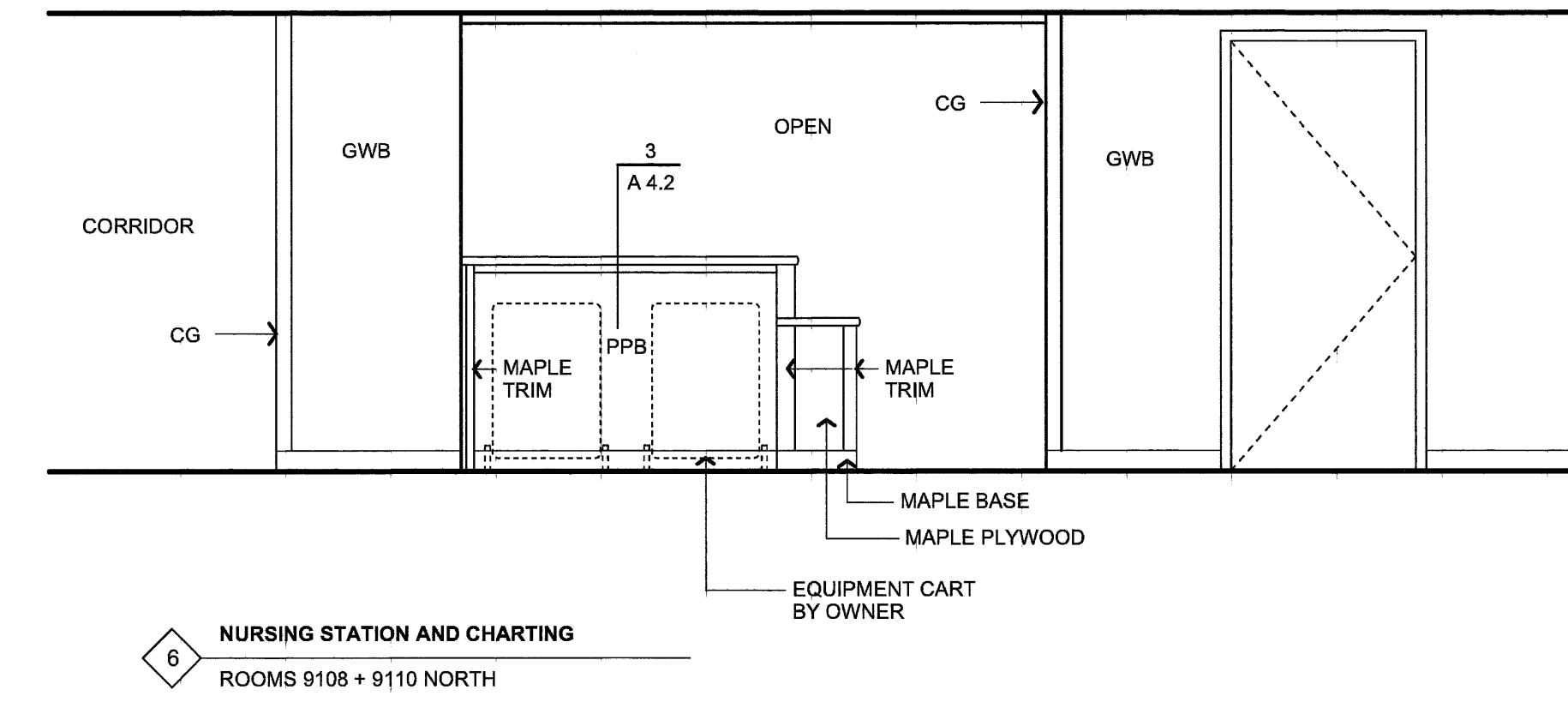
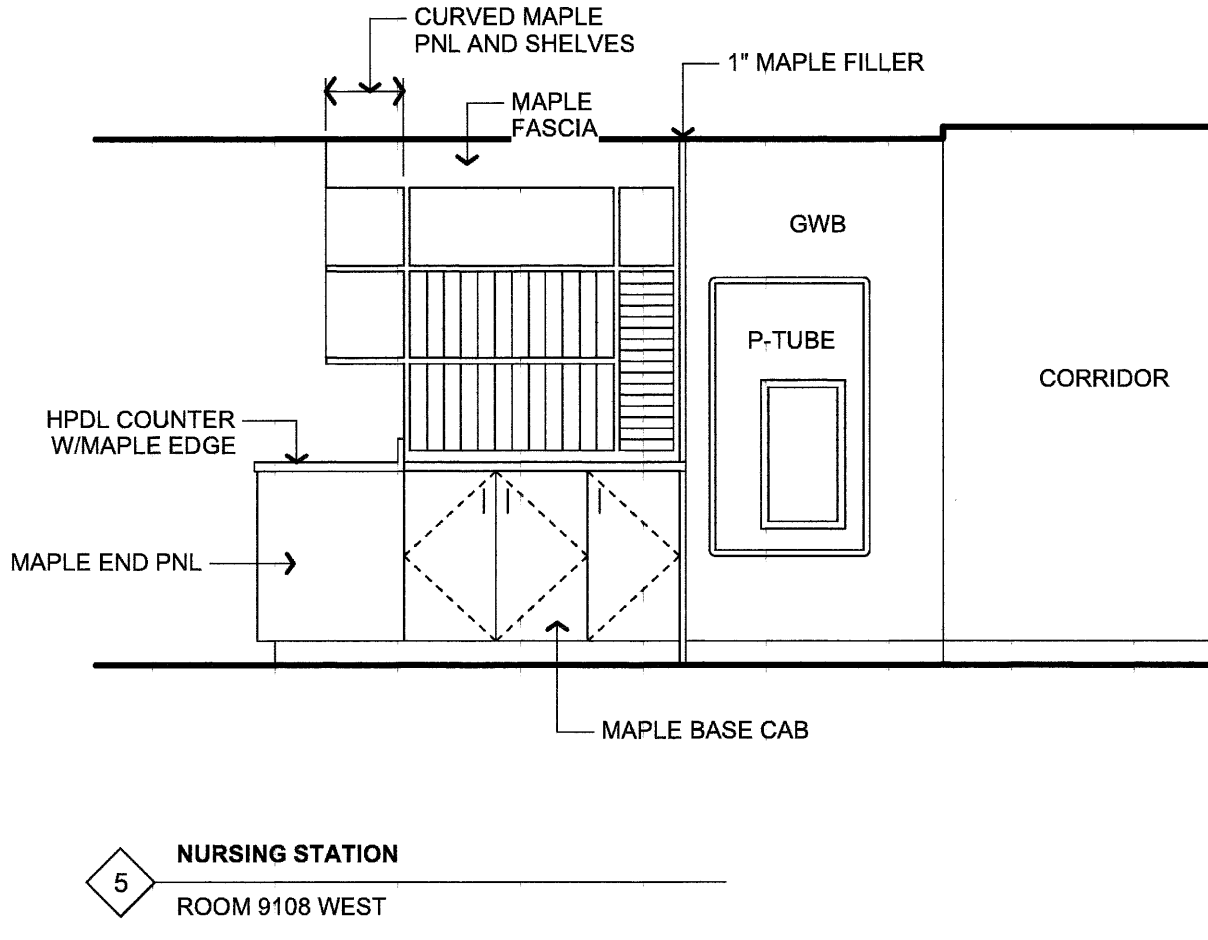
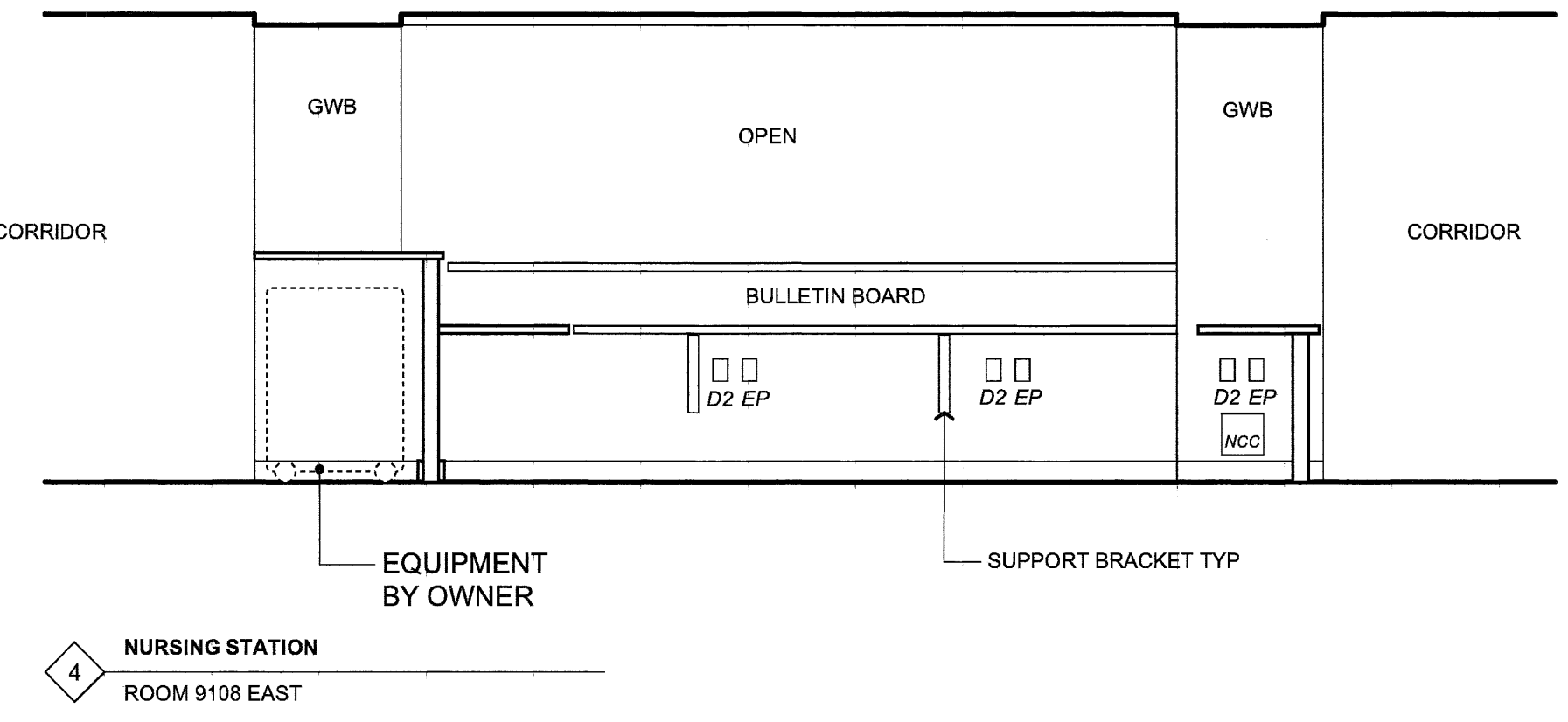
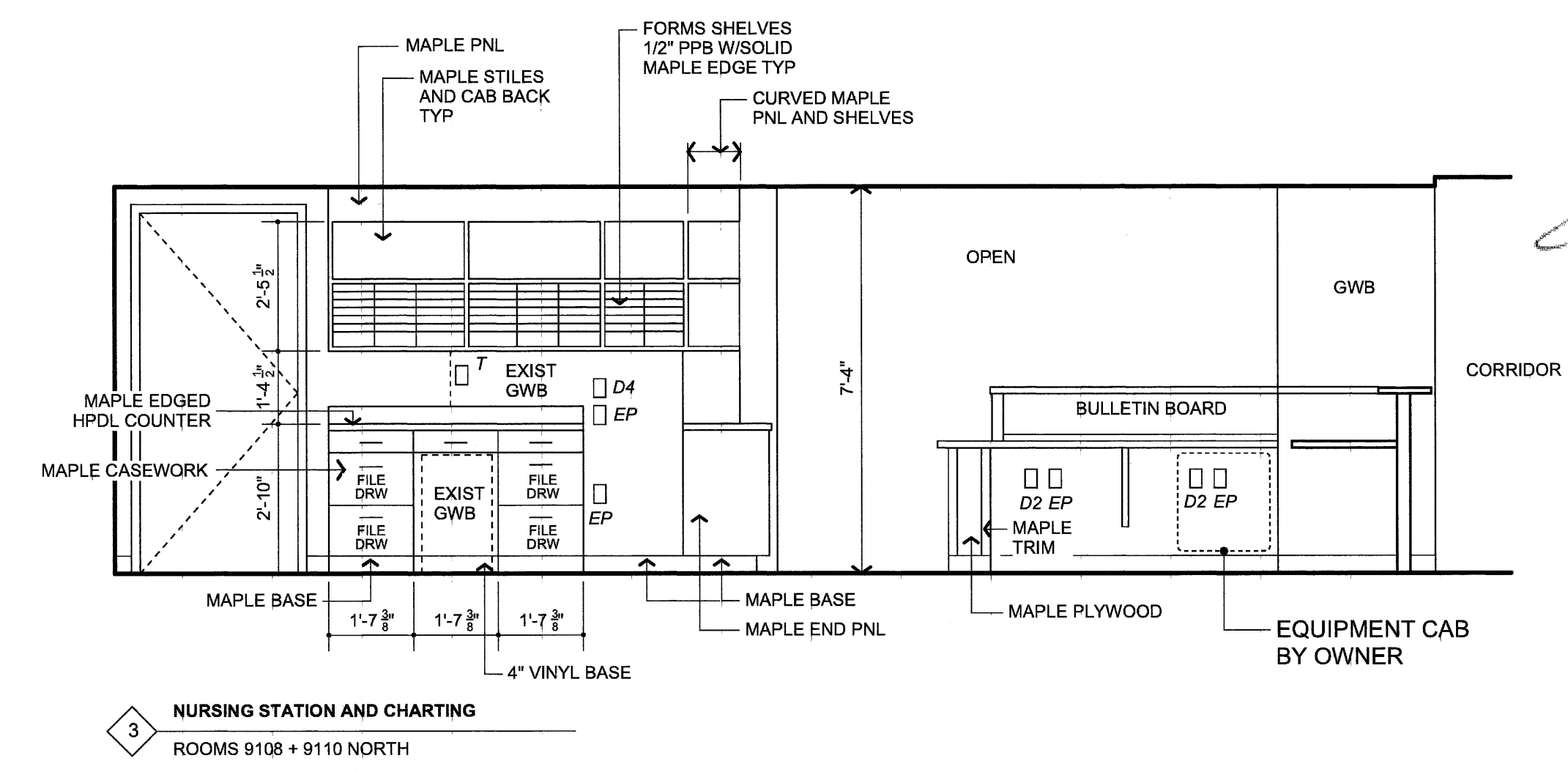




Mark M. Wilcox



2 CHARTING
ROOM 9110 WEST



Richards Wing
Ninth Floor

Renovations

Maine Medical Center
Portland, Maine 04102

Architect
Winton Scott Architects
Portland, Maine

Mechanical Engineering
Mechanical Systems Engineers
Yarmouth, Maine

Electrical Engineering
Swiftcurrent Engineering Services
Yarmouth, Maine

Interior Elevations

A 3.1

Scale: 3/8" = 1' - 0"

March 16, 2009