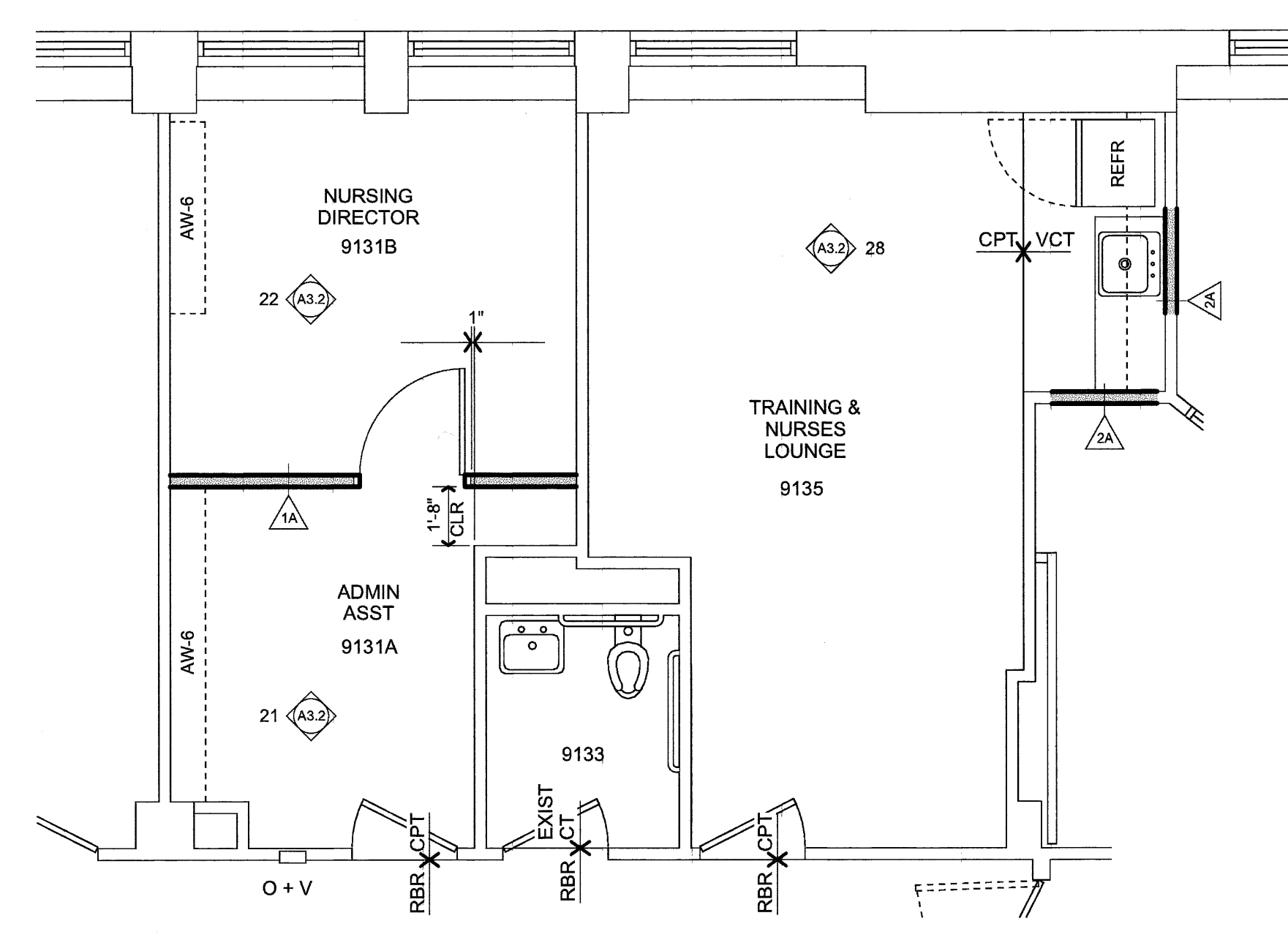
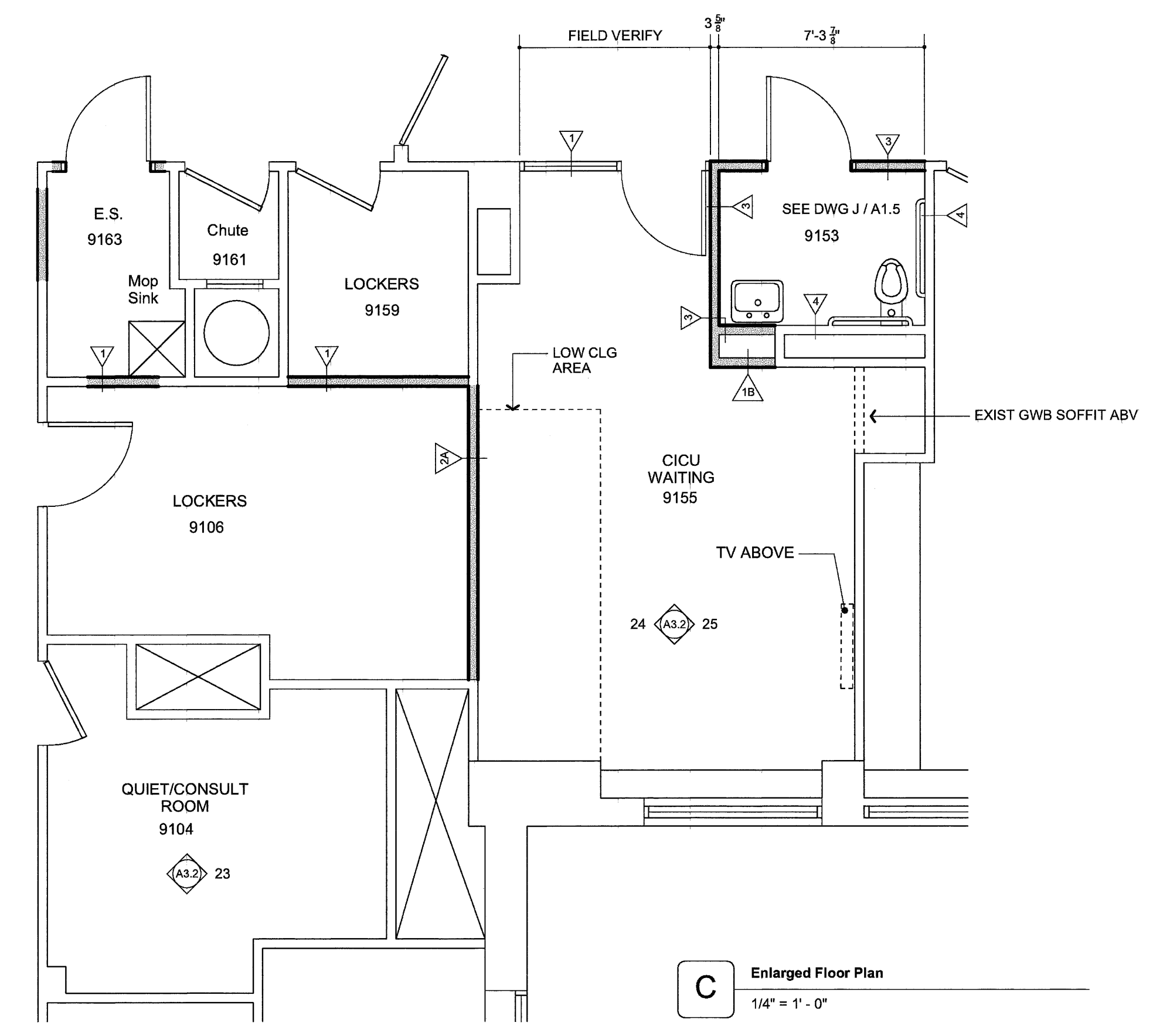


A Enlarged Floor Plan
1/4" = 1' - 0"

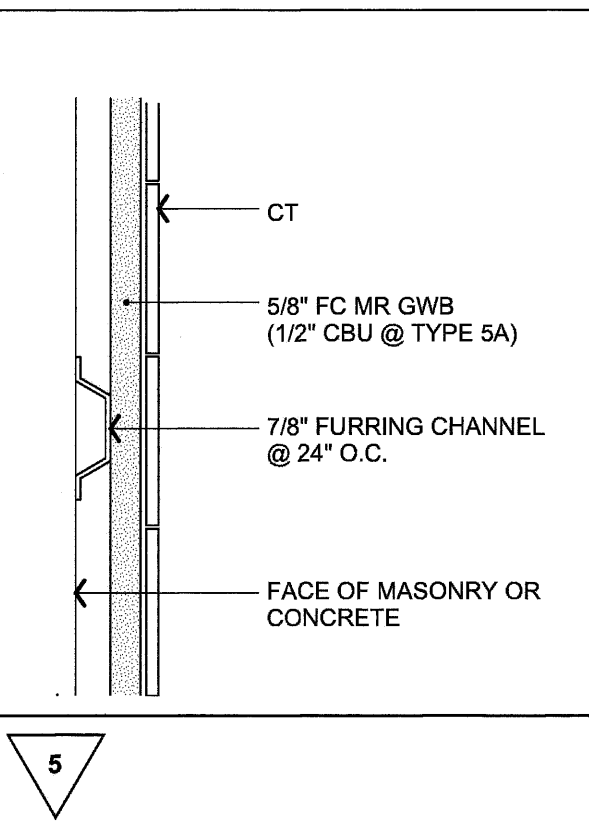
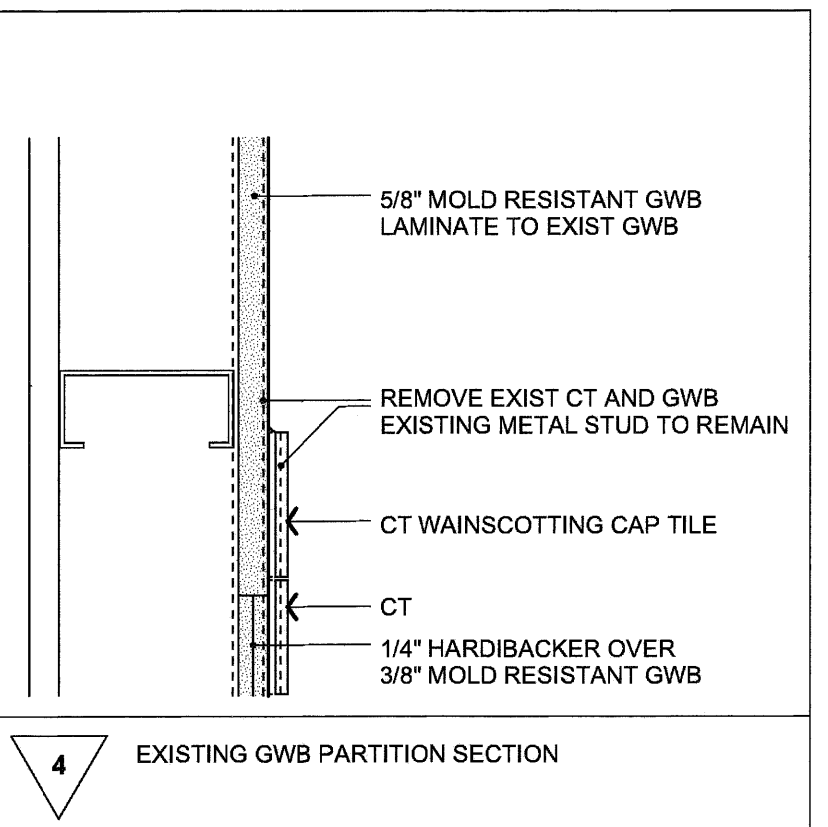
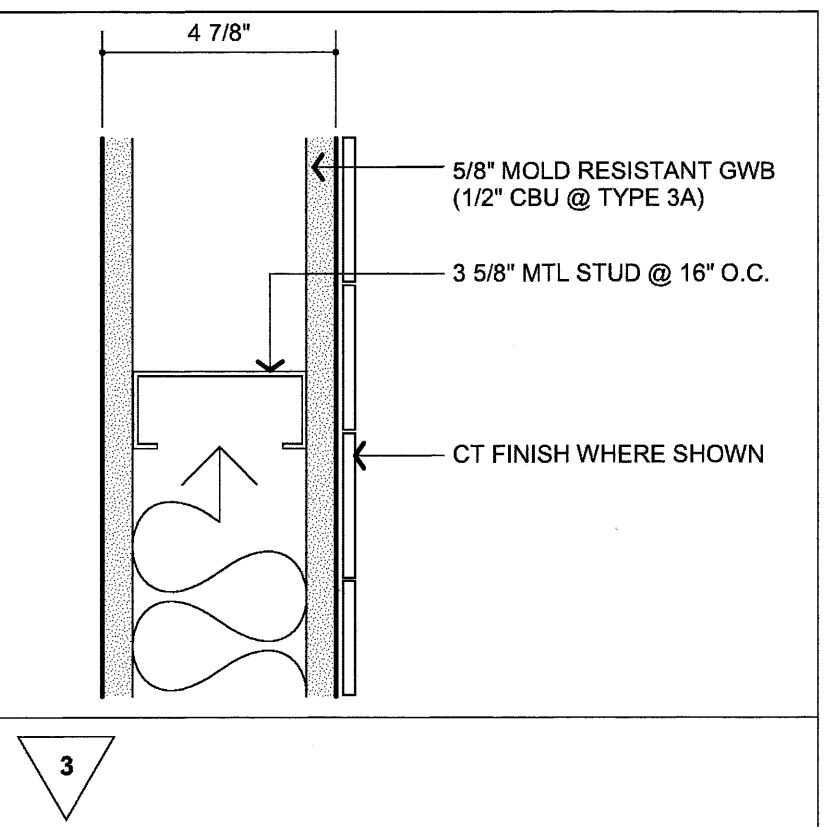
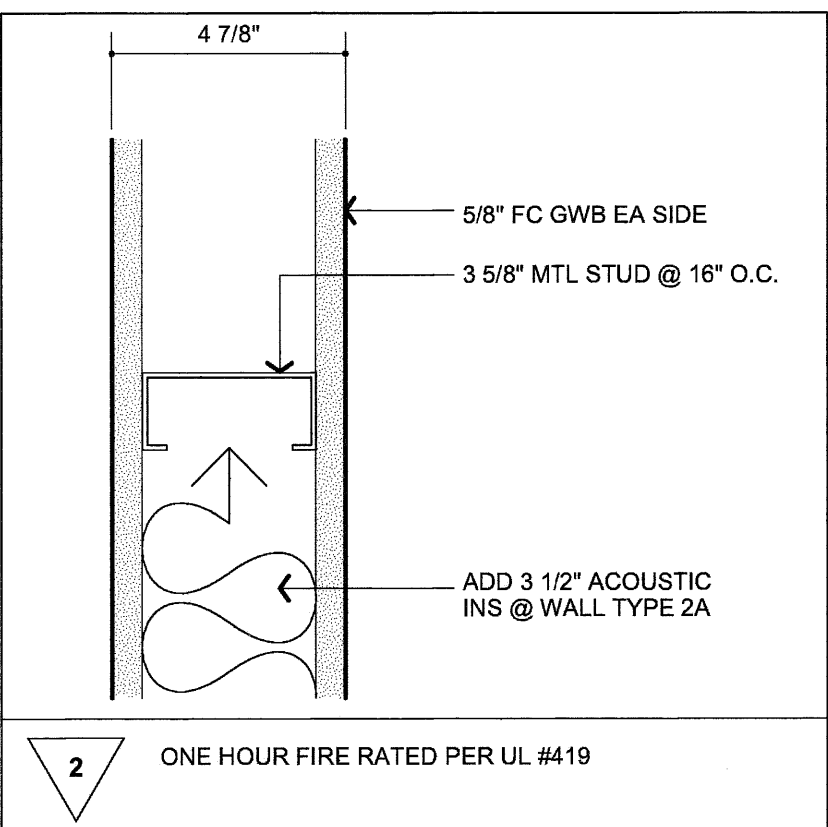
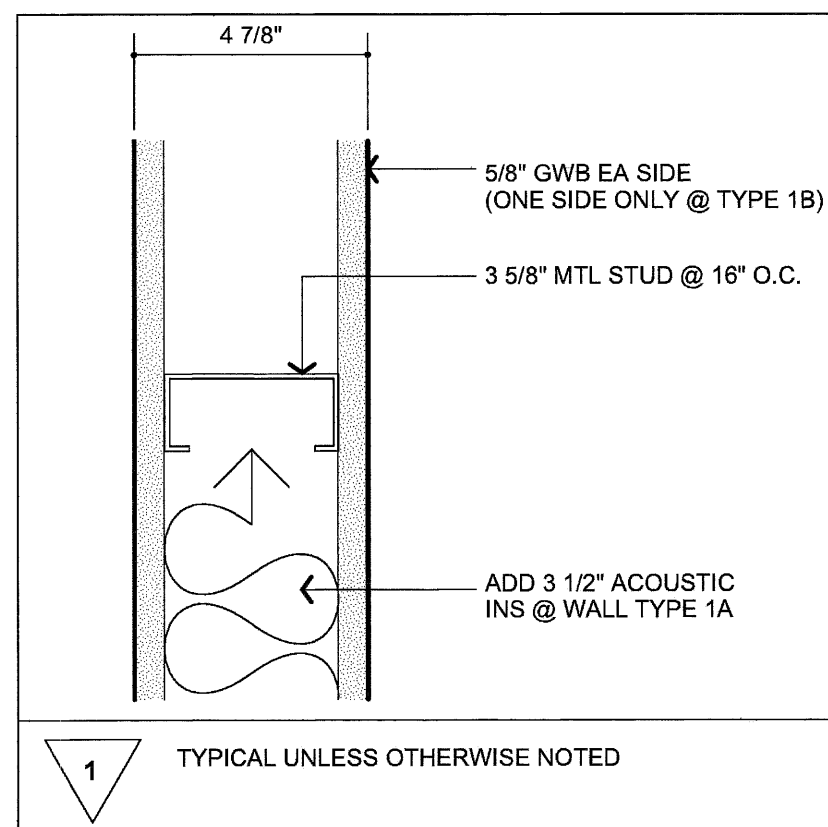


B Enlarged Floor Plan
1/4" = 1' - 0"



C Enlarged Floor Plan
1/4" = 1' - 0"

Partition Types
3" = 1' - 0" * * EXTEND ALL PARTITIONS TO UNDERSIDE OF DECK ABOVE * *



Architectural Woodwork Types

- AW-1 PLAM COUNTER / RADIUS MAPLE EDGE / SEE ELEVATIONS FOR BASE CABINETS
- AW-2 PLAM OVERSHELF COUNTER / MAPLE EDGES
- AW-3 PLAM COUNTER / MAPLE EDGE AND CASEWORK / SEE ELEVATIONS
- AW-4 MAPLE CASEWORK SEE ELEVATIONS
- AW-5 PLAM COUNTER AND BASE UNITS
- AW-6 PLAM ADJUSTABLE SHELVES
- AW-7 CORIAN COUNTER AND BOWL
- AW-8 PLAM WALL CAB
- AW-9 PROJECTED 2 X 12 OAK RAIL TO MATCH EXISTING. REUSE SALVAGE MATERIALS AS POSSIBLE.
- AW-10 SURFACE MTD 5/4 X 8 OAK RAIL TO MATCH EXISTING. REUSE SALVAGE MATERIALS AS POSSIBLE.

Richards Wing
Ninth Floor
Renovations

Maine Medical Center
Portland, Maine 04102

Architect
Winton Scott Architects
Portland, Maine

Mechanical Engineering
Mechanical Systems Engineers
Yarmouth, Maine

Electrical Engineering
Swiftcurrent Engineering Services
Yarmouth, Maine

Enlarged Floor Plans
A 1.3

Scale: 1/8" = 1' - 0"
March 16, 2009