

A1 GE INNOVA CONDUIT, RACEWAY & POWER PLAN

1/2" = 1'-0"

NOTE:

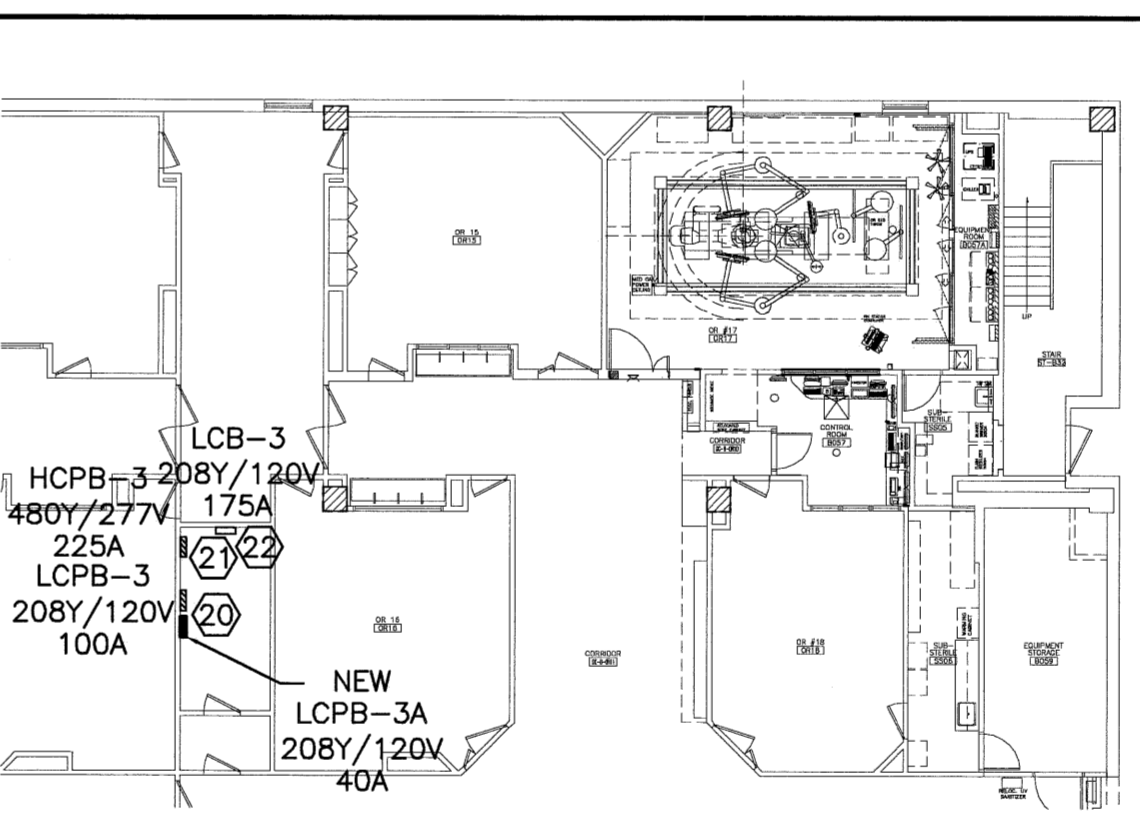
- SEE SHEET E-001 FOR LEGEND AND GENERAL NOTES.
- REFER TO GE HEALTHCARE PLANS FOR ADDITIONAL INFORMATION REGARDING CONDUITS, DUCTS, DUCT OPENINGS, GROMMET MATERIAL, JUNCTION BOXES, INTERCONNECTIONS, AND ALL OTHER ELECTRICAL RELATED DETAILS.
- ALL DEVICES WITH LIGHT LINE WEIGHTS ARE EXISTING TO REMAIN.

KEYED NOTE:

- "GE ITEM "FE". INSTALL FILTER ENCLOSURE PANEL FURNISHED BY GE HEALTHCARE. PROVIDE NEW (4#4/0 AWG & #4/0 GND)2" C FEEDER TO 150A MAIN BREAKER INTEGRAL TO THE FILTER UNIT FROM EXISTING CRITICAL DISTRIBUTION SWITCHBOARD "CR-DP" LOCATED ONE LEVEL BELOW. UTILIZE EXISTING 225A FRAME CIRCUIT BREAKER."
- GE ITEM "A". INSTALL 150A MAIN DISCONNECT PANEL FURNISHED BY GE HEALTHCARE. PROVIDE NEW (4#4/0 AWG & #4/0 GND)2" C FEEDER FROM ITEM "FE" AS INDICATED ON GE HEALTHCARE PLANS.
- GE ITEMS "C1" AND "C2". PROVIDE 8"x8" OPENING IN DUCT COVER WITH GROMMET MATERIAL.
- NEW 4"x2" SURFACE WALL DUCT W/ MIN. 1 DIVIDER. PROVIDE 3"x3" OPENING IN DUCT COVER WITH GROMMET MATERIAL FOR CONNECTIONS TO GE ITEM "UIB".
- GE ITEM "UPS". PROVIDE 6' LENGTH OF 2" FLEXIBLE CONDUIT AND CONNECTORS AND 8"x8" OPENING IN DUCT COVER WITH GROMMET MATERIAL.
- PROVIDE (3)-3"x3" OPENINGS IN DUCT COVER WITH GROMMET MATERIAL FOR CONNECTIONS TO GE ITEMS "CHLR" AND "DC". THE 3" CONDUIT FOR WATER LINES TO THE TABLE SHALL BE STUBBED 2" AFF.
- NEW 24"x3-1/2" SURFACE WALL DUCT W/ MIN. 3 DIVIDERS.
- FURNISH AND INSTALL EMPTY CONDUITS TO SERVICE PEDESTAL AS SPECIFIED ON POWER PLANS FOR MMC CLINICAL ENGINEERING FUTURE USE.
- EXISTING EMERGENCY EQUIPMENT BRANCH MOTOR CONTROL CENTER. REMOVE EXISTING SIZE 1 SPARE STARTER AND REPLACE WITH 25A/3P CIRCUIT BREAKER IN NEW MCC BUCKET. TO MATCH EXISTING EQUIPMENT.
- NEW 24"x24"x12" FLOOR BOX W/ 2-6" AND 4-1" DIAMETER LOCKNUTS AND 12"x12"x6" FLOOR BOX W/ 1-6" AND 4-1" DIAMETER BUSHINGS. GE ITEM "LC1"
- GE FURNISHED VITALING FLUSH MOUNT CEILING SPEAKER

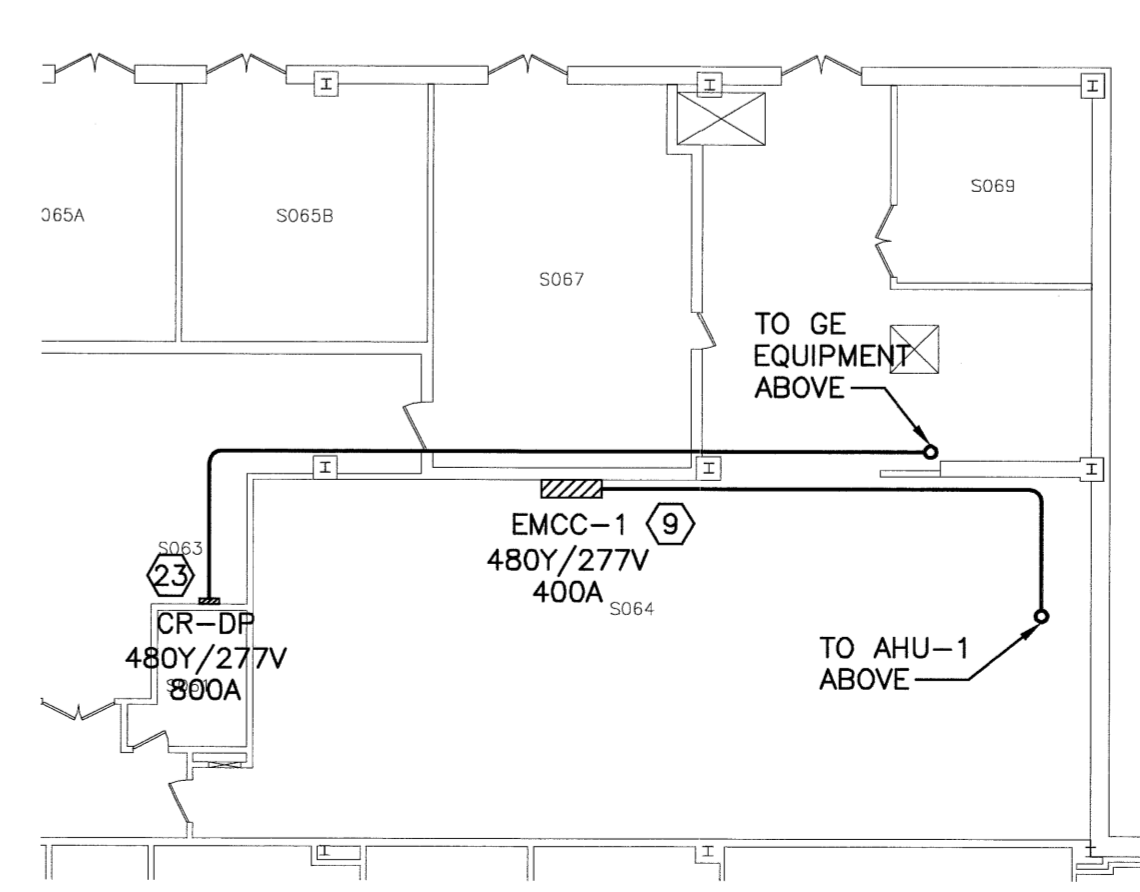
KEYED NOTE (CONT.):

- NEW 8"x6"x16" JUNCTION BOX & COVER WITH 2-4" DIAMETER LOCKNUTS FOR GE ITEM "LUS". COORDINATE EXACT LOCATION WITH NEW TABLE STUB UP AREA. FOR TABLE PROVIDE 12"x1 1/2" GROUND BAR W/ 1/4" MIN. MACHINE SCREWS AND GROMMET MATERIAL.
- GE FURNISHED VITALING CEILING MICROPHONE.
- X-RAY ROOM WARNING LIGHT/ROOM LIGHTING CONTROL PANEL AND "X-RAY IN USE" INDICATOR LIGHT.
- XR BUZZER LOCATED ABOVE CEILING.
- INNOVA POSITIONER LOCATED ABOVE CEILING
- GE MONITOR BOOM ENTRY POINT. PROVIDE 2" CONDUIT TO CONTROL ROOM FOR GE CABLING.
- EMERGENCY STOP PUSH BUTTON. PROVIDE 2" CONDUIT TO CONTROL ROOM FOR GE CABLING.
- NEW 24"x24"x12" RISER DUCT W/ MIN. 3 DIVIDERS.
- FURNISH AND INSTALL NEW 18-POLE CRITICAL BRANCH PANELBOARD "LCPB-3A" TO EXPAND CIRCUIT AVAILABILITY. MOUNT TO AVAILABLE WALL SPACE IN ELECTRICAL CLOSET. PROVIDE #6 AWG & #8 GND, 1" C FEEDER FROM EXISTING PANELBOARD "LCPB-3A" 40A/3P SPARE CIRCUIT BREAKER.
- REMOVE AND REPLACE EXISTING 20A/1P CIRCUIT BREAKERS #19 (SPARE) AND #31 (OR 17 IPSB) AND REPLACE WITH NEW 35A/1P BREAKER TO MATCH EXISTING STYLE AND AIC RATINGS TO SERVE NEW OR-17 DUPLEX PANELBOARD. EACH BREAKER SHALL SERVE IPS-B-17 AND IPS-B-17A RESPECTIVELY.
- FURNISH AND INSTALL 20A/1P CIRCUIT BREAKER IN SPACE #42 FOR NEW NORMAL RECEPTACLE BRANCH CIRCUIT IN OR-17. BREAKER SHALL MATCH EXISTING STYLE AND AIC RATING.
- UTILIZE EXISTING 225A SPARE CIRCUIT BREAKER IN CRITICAL BRANCH DISTRIBUTION PANEL FOR FEED TO GE ITEM "FE" 150A MAIN CIRCUIT BREAKER. EXTEND NEW FEEDER AS INDICATED.



D10 BASEMENT FLOOR PLAN

1/16" = 1'-0"



A10 SUB BASEMENT FLOOR PLAN

1/16" = 1'-0"

144 Fox Street, 2nd Fl. 04104 Portland, Maine 04104
tel. (207) 772-3846 fax. (207) 772-1070 www.smartinc.com

ARCHITECTURE
ENGINEERING
PLANNING
INTERIOR DESIGN
COMMISSIONING

SMART

PROJECT NORTH

STATE OF MAINE
DANIEL J. TIBBETTS
No. 9836
LICENSED PROFESSIONAL ENGINEER
2/25/04

MAINE MEDICAL CENTER
ENDOSCOPY & VASCULAR DEPT. RENOVATION
PORTLAND, ME

ISSUED FOR CONSTRUCTION
2-24-09

NO.	REV.	DESCRIPTION	DATE
0		ISSUED FOR CONSTRUCTION	2-24-09

GRAPHIC SCALE:
0" 1"

SCALE: AS NOTED

PROJECT MANAGER: DNV
IC/DRAWN BY: CDS
A/E OF RECORD: DIT
CAD FILE: E-103-05169
PROJECT NO: 05169
DATE: 2-24-09

SHEET TITLE:
GE INNOVA AND KEY PLANS

SHEET No. **E-103**