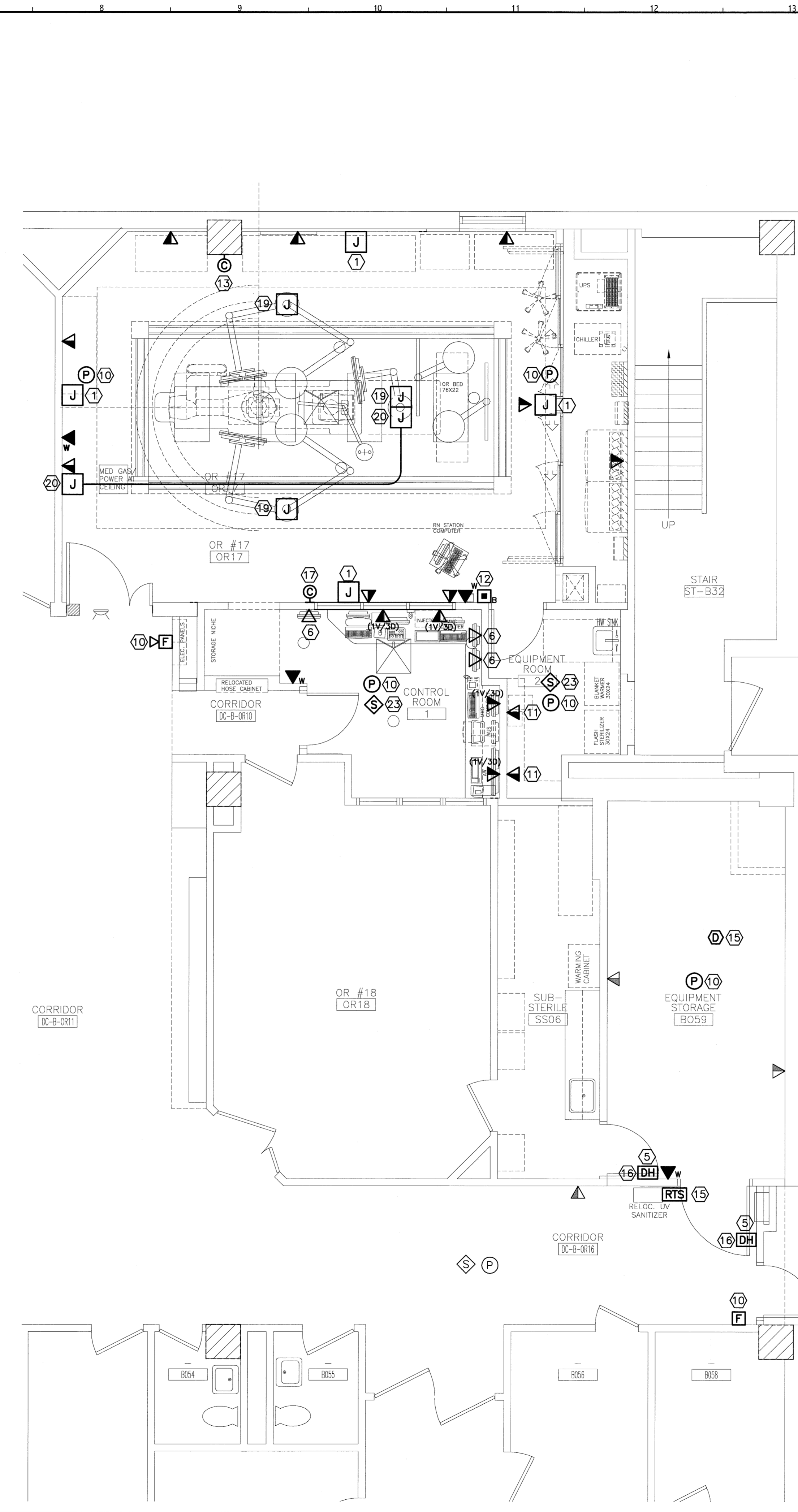


**A1 LIGHTING FLOOR PLAN**  
1/4" = 1'-0"



**A7 SYSTEMS FLOOR PLAN**  
1/4" = 1'-0"

**NOTE:**

- SEE SHEET E-001 FOR LEGEND AND GENERAL NOTES.
- REFER TO GE HEALTHCARE PLANS FOR ADDITIONAL INFORMATION REGARDING CONDUITS, DUCTS, DUCT OPENINGS, GROMMET MATERIAL, JUNCTION BOXES, INTERCONNECTIONS, AND ALL OTHER ELECTRICAL RELATED DETAILS.
- ALL LIGHT FIXTURES, DEVICES, ETC, SHOWN WITH LIGHT LINE WEIGHTS ARE EXISTING TO BE MAINTAINED UNLESS OTHERWISE NOTED.
- ALL NEW EXIT SIGNS SHALL BE CONNECTED TO NEAREST LIFE SAFETY LIGHTING BRANCH CIRCUIT.

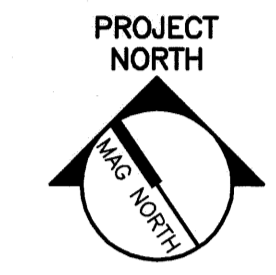
**KEYED NOTE:**

- PROVIDE 4" SQUARE BACKBOX 94" AFF TO CENTER WITH 1 1/4" CONDUIT ROUTED TO ABOVE EQUIPMENT ROOM 2 ACCESSIBLE CEILING. PROVIDE PULLSTRINGS AND RUBBER GASKETS BETWEEN CONDUITS AND BACKBOXES FOR MMC SYSTEMS USE.
- CONNECT TO EXISTING UNSWITCHED LIFE SAFETY LIGHTING BRANCH CIRCUIT SERVING THE AREA.
- CONNECT TO EXISTING NORMAL LIGHTING BRANCH CIRCUIT SERVING THE AREA VIA NEW SWITCHING AS INDICATED.
- CONNECT TO EXISTING SWITCHED CORRIDOR NORMAL LIGHTING BRANCH CIRCUIT.
- CONNECT TO EXISTING 120V RECEPTACLE BRANCH CIRCUIT SERVING THE AREA.
- COORDINATE MOUNTING HEIGHT WITH ARCH. FOR INSTALLATION BEHIND WALL-MOUNT MONITOR.
- REINSTALL LIGHT CONTROL DEVICES REMOVED DURING DEMOLITION. EXTEND EXISTING WIRING AS REQUIRED.
- REINSTALL LIGHT FIXTURE REMOVED DURING DEMOLITION. EXTEND EXISTING WIRING AS REQUIRED.
- PROVIDE 120V CONNECTION TO OVERHEAD BOOM FOR OR LIGHT FIXTURE. PROVIDE 1" CONDUIT FROM BACKBOX ABOVE CEILING TO 2-GANG BACKBOX AT NURSE STATION FOR CONTROLS (BY OTHERS). COORD. W/ BOOM AND LIGHT FIXTURE FURNISHED BY OWNER.
- REINSTALL FIRE ALARM SYSTEM DEVICE REMOVED DURING DEMOLITION. EXTEND FIRE ALARM SYSTEM WIRING AS REQUIRED TO ACCOMMODATE NEW DEVICE LOCATION.
- MOUNT 7" ABOVE COUNTER TO CENTERLINE OF DEVICE.
- REINSTALL EXISTING NURSE CALL STATION REMOVED DURING DEMOLITION. INTERCEPT AND EXTEND EXISTING WIRING AS REQUIRED FOR A COMPLETE AND OPERABLE SYSTEM.
- REINSTALL WALL CLOCK AND ELAPSE TIME WALL CLOCK REMOVED DURING DEMOLITION AND EXTEND EXISTING WIRING AS REQUIRED.
- FURNISH AND INSTALL NEW FIRE ALARM SYSTEM DEVICE TO MATCH EXISTING HONEYWELL SYSTEM STANDARD. EXTEND EXISTING SYSTEM WIRING AS REQUIRED FOR A COMPLETE AND OPERABLE SYSTEM.
- PROVIDE NEW DUCT SMOKE DETECTOR FOR AHU-1 RETURN DUCT AND REMOTE TEST SWITCH FOR FAN SHUT DOWN. PROVIDE RECONFIGURATION AND REPROGRAMMING OF EXISTING FIRE ALARM SYSTEM AS REQUIRED.
- PROVIDE 120V CONNECTION AS INDICATED AND FIRE ALARM SYSTEM CONTROL MODULE FOR RELEASE UPON GENERAL ALARM. EXTEND EXISTING SYSTEM WIRING AS REQUIRED FOR A COMPLETE AND OPERABLE SYSTEM.
- NEW WALL CLOCK AND ELAPSE TIME WALL CLOCK EXTEND EXISTING CLOCK SYSTEM WIRING AS REQUIRED TO FEED NEW CLOCKS.
- REINSTALL EXIT SIGN REMOVED DURING DEMOLITION. EXTEND CORRIDOR LIFE SAFETY CIRCUIT AS REQUIRED TO ACCOMMODATE NEW LOCATION.
- PROVIDE (2) 1 1/4" CONDUITS FROM BOOM ENTRY POINT TO ABOVE EQUIPMENT ROOM 2 ACCESSIBLE CEILING FOR MMC SYSTEMS USE ONLY.
- PROVIDE 4" SQUARE BACKBOX WITH 1 1/4" CONDUIT ROUTED TO EQUIPMENT ROOM ACCESS POINT FOR ANESTHESIA MACHINE DISPLAY. PROVIDE DEVICE, FACEPLATE, CABLING AND TERMINATIONS FOR A VGA VIDEO CONNECTION FROM THE WALLPLATE TO A BOOM-MOUNT VIDEO MONITOR (BY MMC). PROVIDE RUBBER GASKETS BETWEEN CONDUITS. COORD. W/ MMC IS AND CLINICAL ENGINEERING.
- LIGHTING SWITCH LEG B SHALL BE CONTROLLED VIA GE HEALTHCARE TABLE FOOTSWITCH. ROUTE WIRING THROUGH GE CONTROL RELAY AS REQUIRED FOR REMOTE OPERATION.
- REINSTALL STERIS OPERATING ROOM LIGHTING FIXTURES, TRACKS, AND CONTROLS REMOVED DURING DEMOLITION. PROVIDE NEW 120V POWER CONNECTION AS INDICATED.
- REINSTALL EXISTING PUBLIC ADDRESS SPEAKER REMOVED DURING DEMOLITION. EXTEND EXISTING SYSTEM WIRING AS REQUIRED.

144 Five Star P.O. Box 618  
Portland, Maine 04104  
Tel. (207) 772-3846  
Fax. (207) 772-1070  
www.smartinc.com

ARCHITECTURE  
ENGINEERING  
PLANNING  
INTERIOR DESIGN  
COMMISSIONING

**SMART**



MAINE MEDICAL CENTER  
ENDOSCOPY & VASCULAR DEPT. RENOVATION  
PORTLAND, ME

ISSUED FOR CONSTRUCTION  
2-24-09

CURRENT ISSUE STATUS:

REV	DATE	DESCRIPTION
0	2-24-09	ISSUED FOR CONSTRUCTION

GRAPHIC SCALE:  
0" = 1"

SCALE: AS NOTED

PROJECT MANAGER: DMV  
I/C/DRAWN BY: CDS  
A/E OF RECORD: DJT  
CAD FILE: E-102-05169  
PROJECT NO: 05169  
DATE: 2-24-09  
SHEET TITLE:  
LIGHTING AND SYSTEMS PLANS