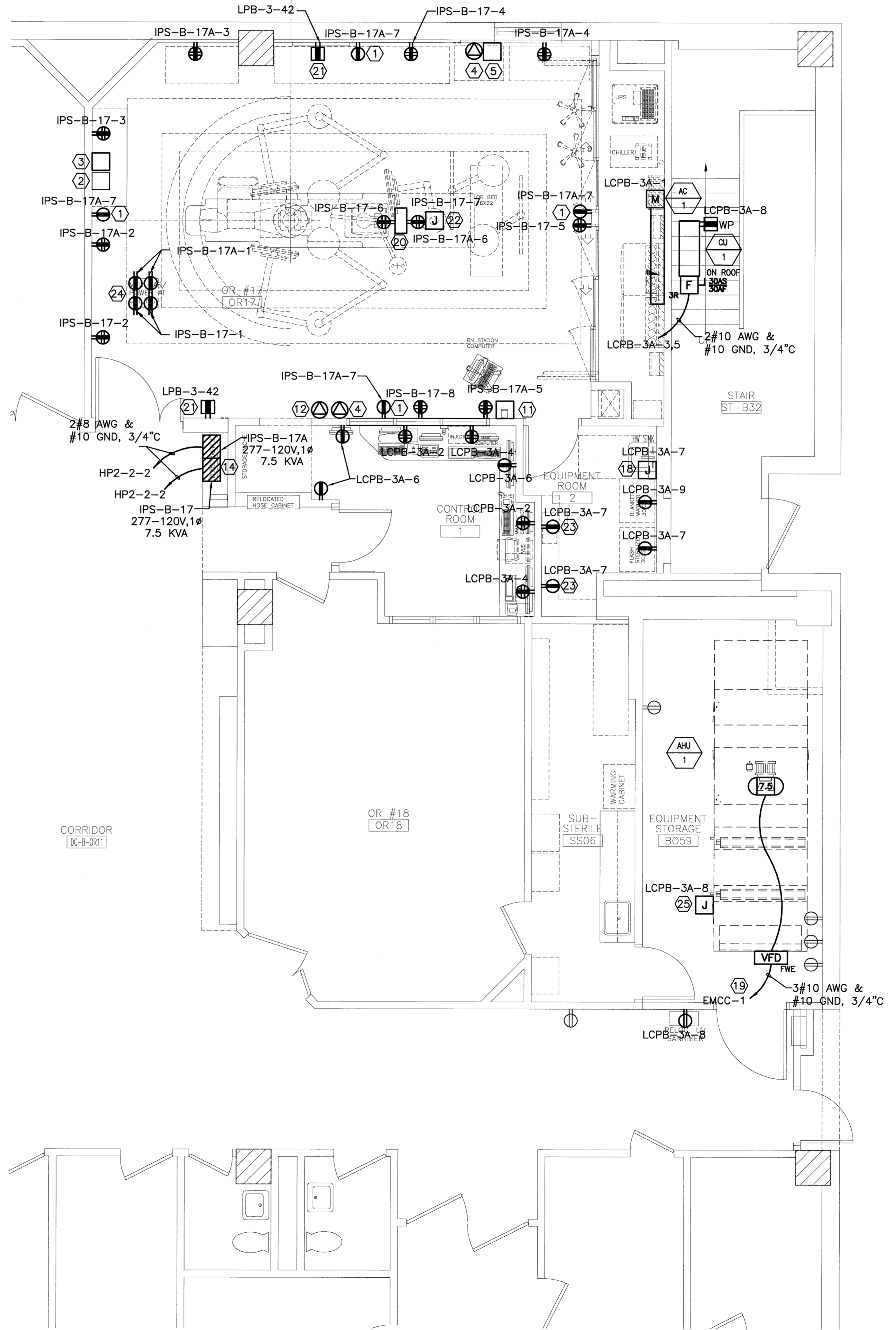


**A1 DEMO FLOOR PLAN**  
1/4" = 1'-0"



**A7 POWER FLOOR PLAN**  
1/4" = 1'-0"

**NOTE:**

- SEE SHEET E-001 FOR LEGEND AND GENERAL NOTES.
- REFER TO GE HEALTHCARE PLANS FOR ADDITIONAL INFORMATION REGARDING CONDUITS, DUCTS, DUCT OPENINGS, GROMMET MATERIAL, JUNCTION BOXES, INTERCONNECTIONS, AND ALL OTHER ELECTRICAL RELATED DETAILS.
- ALL LIGHT FIXTURES, DEVICES, ETC, SHOWN WITH LIGHT LINE WEIGHTS ARE EXISTING TO BE MAINTAINED UNLESS OTHERWISE NOTED.
- REFER TO SHEET E-103 FOR PANELBOARD LOCATIONS AND INSTALLATION INSTRUCTIONS.

**KEYED NOTE:**

- MOUNT 94" AFF TO CENTERLINE FOR WALL MOUNT MONITOR.
- EXISTING GROUND TERMINAL LUG TO BE MAINTAINED.
- EXISTING X-RAY ISOLATION PANEL INDICATOR TO BE REMOVED AND REINSTALLED AS INDICATED. EXTEND EXISTING BRANCH CIRCUIT CONDUIT AND WIRING AS REQUIRED.
- EXISTING 30A/2P TWISTLOCK X-RAY RECEPTACLE TO BE REMOVED AND REINSTALLED AS INDICATED. EXTEND EXISTING BRANCH CIRCUIT CONDUIT AND WIRING AS REQUIRED.
- EXISTING ISOLATION PANEL INDICATOR TO BE REMOVED AND REPLACED WITH NEW INDICATORS.
- EXISTING OPERATING ROOM BOOM MOUNT LIGHT FIXTURE, TRACK, AND CONTROLS TO BE REMOVED AND REINSTALLED AS INDICATED ON LIGHTING PLANS.
- EXISTING WALL CLOCK TO BE REMOVED AND REINSTALLED AS INDICATED ON SYSTEMS PLANS.
- EXISTING FIRE ALARM DEVICE TO BE REMOVED AND REINSTALLED AS INDICATED ON SYSTEMS PLANS.
- EXISTING PUBLIC ADDRESS SPEAKER TO BE REMOVED AND REINSTALLED AS INDICATED ON SYSTEMS PLANS. EXTEND WIRING AS REQUIRED TO ACCOMMODATE NEW DEVICE LOCATION.
- EXISTING LIGHT CONTROL DEVICE TO BE REMOVED AND REINSTALLED AS INDICATED ON LIGHTING PLANS.
- NEW ROOM ISOLATION PANEL REMOTE INDICATOR. PROVIDE WIRING TO ROOM ISOLATION PANEL AS REQUIRED.
- EXISTING 50A/3P GROUNDED RECEPTACLE TO BE REMOVED AND REINSTALLED AS INDICATED. EXTEND EXISTING BRANCH CIRCUIT CONDUIT AND WIRING AS REQUIRED.
- EXISTING ISOLATION PANEL IPS-B-17 TO BE REMOVED AND REPLACED WITH NEW DUPLEX PANEL. REMOVE ALL BRANCH CIRCUIT WIRING AND REMOTE GROUND FAULT INDICATOR. REMOVE FEEDER WIRING BACK TO SOURCE PANELBOARD "HCPB-3"
- FURNISH AND INSTALL NEW (2)-7.5KVA DUPLEX ISOLATION PANEL (SQUARE D #7/7H5S41DD1) 277 PRIMARY, 120V SECONDARY. PROVIDE W/ REMOTE ALARM INDICATORS FOR INSTALLATION IN OR TO REPLACE EXISTING PANEL INDICATORS. EACH PANEL SECTION SHALL HAVE (12)-20A/1P BREAKERS. SECTION ONE SHALL REPLACE EXISTING PANEL IPS-B-17. SECTION TWO SHALL BE NEW PANEL IPS-B-17A.
- EXISTING EXIT SIGN TO BE REMOVED AND REINSTALLED AS INDICATED ON LIGHTING PLAN.
- EXISTING AUTOCLAVE TO BE REMOVED AND RETURNED TO OWNER. REMOVE ALL BRANCH CIRCUIT WIRING AND CONDUIT BACK TO PANELBOARD.
- EXISTING LIGHT FIXTURE TO BE REMOVED AND REINSTALLED AS INDICATED ON LIGHTING PLAN.
- PROVIDE 120V CONNECTION TO AUTOMATIC FLUSH VALVE POWER SUPPLY FURNISHED BY OTHERS. COORD. W/ PLUMBING CONTRACTOR FOR EXACT LOCATION OF ELECTRICAL CONNECTION.
- EXTEND TO EMERGENCY EQUIPMENT BRANCH EMCC-1 IN SUB-BASEMENT ONE LEVEL BELOW. SEE SUB-BASEMENT PLAN FOR ADDITIONAL INFORMATION.
- FURNISH AND INSTALL NEW 20"x10"x16" STAINLESS STEEL SERVICE PEDESTAL (BEACON MEDICAL #6-PED08-8) WITH (2) RED DUPLEX RECEPTACLES DEVICE INSERTS AND (2) BLANK PROVISION INSERTS PER SIDE. SEE E-103 FOR RACEWAY REQUIREMENTS.
- FURNISH AND INSTALL NEW NORMAL BRANCH DUPLEX RECEPTACLE. PROVIDE GREY DEVICE WITH STAINLESS FACEPLATE.
- PROVIDE 120V CONNECTION TO MONITOR BOOM RECEPTACLE DEVICES FURNISHED WITH EQUIPMENT. COORDINATE W/ BOOM INSTALLER FOR EXACT LOCATION OF ELECTRICAL CONNECTION.
- MOUNT 7" ABOVE COUNTER TO CENTERLINE OF DEVICE.
- INSTALL DEVICES IN MED GAS CEILING PANEL FURNISHED BY OTHERS.
- ALTERNATE: PROVIDE 120V CONNECTION TO AHU-1 UV STERILIZER. COORD. W/ MECHANICAL
- REMOVE AND REINSTALL EXISTING NURSE CALL DEVICE AS INDICATED ON SYSTEMS PLAN.

144 Fox Street, P.O. Box 618  
Portland, Maine 04104  
tel. (207) 772-3846  
fax. (207) 772-1070  
www.smartinc.com

ARCHITECTURE  
ENGINEERING  
PLANNING  
INTERIOR DESIGN  
COMMISSIONING

**SMART**

PROJECT NORTH

DANIEL J. THIBERTTS  
LICENSED PROFESSIONAL ENGINEER  
3/23/09

MAINE MEDICAL CENTER  
ENDOSCOPY & VASCULAR DEPT. RENOVATION  
PORTLAND, ME

ISSUED FOR CONSTRUCTION  
2-24-09

NO.	REVISION	DESCRIPTION	DATE
0	REV	ISSUED FOR CONSTRUCTION	2-24-09
1	REV		
2	REV		
3	REV		
4	REV		
5	REV		
6	REV		
7	REV		
8	REV		
9	REV		
10	REV		
11	REV		
12	REV		
13	REV		
14	REV		
15	REV		
16	REV		
17	REV		
18	REV		
19	REV		
20	REV		
21	REV		
22	REV		
23	REV		
24	REV		
25	REV		
26	REV		

GRAPHIC SCALE:  
0" 1"

SCALE: AS NOTED

PROJECT MANAGER:	DM
IC/DRAWN BY:	CDS
A/E OF RECORD:	DIT
CAD FILE:	E-101-05169
PROJECT NO.:	05169
DATE:	2-24-09

SHEET TITLE:  
DEMO AND POWER PLANS

SHEET No. **E-101**