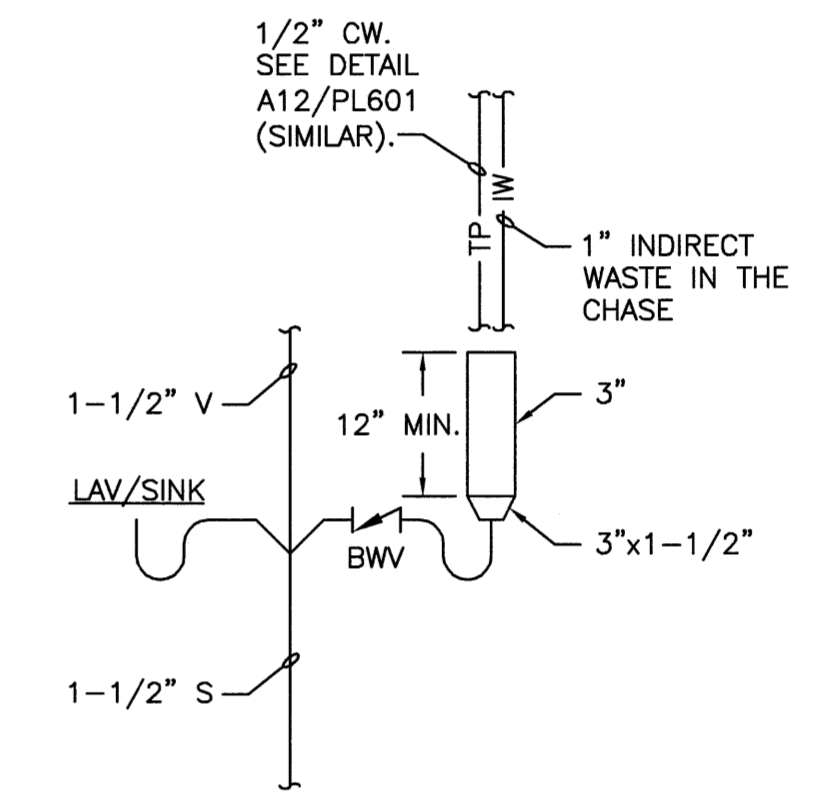
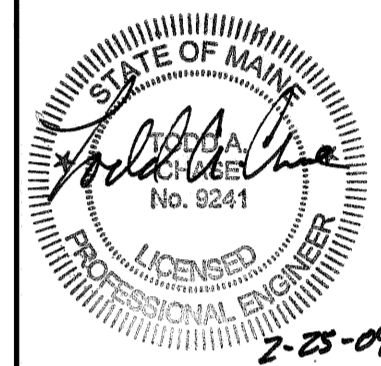


NOTE:
1. SEE SHEET M-001 FOR LEGEND AND ABBREVIATIONS.

144 Fore Street P.O. Box 68
Portland, Maine 04101
Tel: (207) 772-3846
Fax: (207) 772-1070
www.smartinc.com

ARCHITECTURE
ENGINEERING
PLANNING
INTERIOR DESIGN
COMMISSIONING

SMART



IW AT LAV/SINK

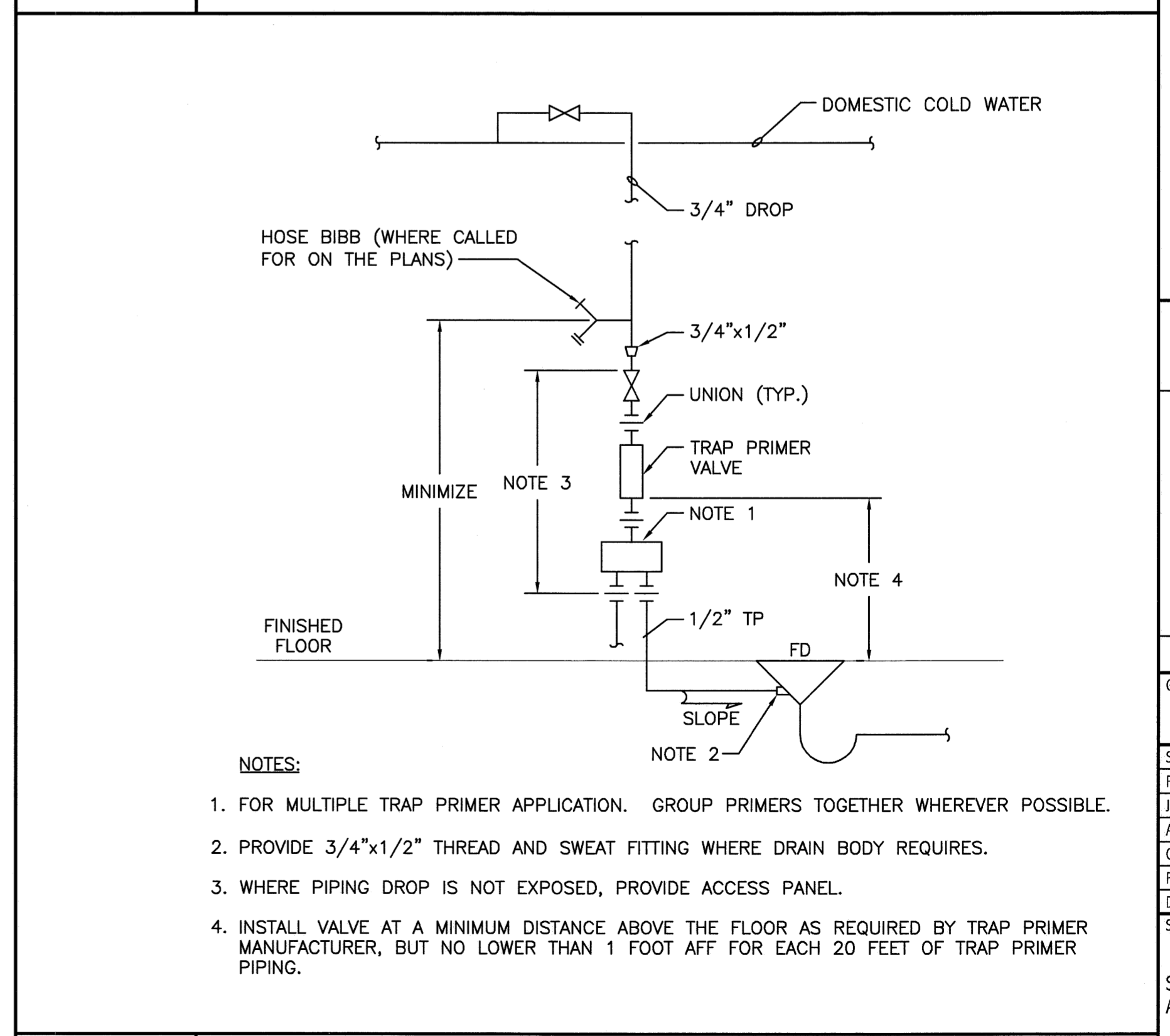
DRAIN SCHEDULE					
TAG	APPLICATION	TYPICAL UNIT MFG & MODEL NO.	DESCRIPTION	TRAP PRIMER	NOTES
FD-A	UNFINISHED EQUIPMENT SPACES	ZURN Z-554-P	MEDIUM DUTY DRAIN, CAST IRON BODY & GRATE, 3/4" TRAP PRIMER CONNECTION	SINGLE DRAIN APPLICATION; PRECISION PLUMBING PRODUCTS #PR-500	①②③

NOTES: ① 1/2" TRAP PRIMER CONNECTION. PROVIDE TRAP PRIMER VALVE AND SUPPLY PIPING COMPLETE FOR ALL FLOOR DRAINS,
② SEDIMENT BUCKET.
③ NO HUB OUTLET.

PLUMBING FIXTURE SCHEDULE						
TAG	DESCRIPTION	FIXTURE	FAUCET/DRAIN	TRIM	SUPPORT	NOTES
LAV-A	WALL MOUNTED LAVATORY - ADA	AMERICAN STANDARD #0356.015 "LUCERNE" VITREOUS CHINA, 20"x18", (3) HOLES ON 4" CENTERS.	SLOAN #ETF-880-8-B-BDT SENSOR-OPERATED FAUCET, CHICAGO #327XCP DRAIN, OFFSET TAILPIECE, CHROME PLATED	MCGUIRE ANGLE STOPS, P-TRAP, ESCUTCHEONS AND RISERS-CHROME PLATED	ZURN #1231	①②③

NOTES: ① INSULATE EXPOSED PIPING - TRUEBRO #102G.
② PROVIDE SLOAN TRANSFORMER #EL-154 (1 TRANSFORMER CAN SERVE UP TO 2 FAUCETS).
③ FAUCET FINISH TO BE BRUSHED NICKEL.

F12 INDIRECT WASTE CONNECTION



A12 TRAP PRIMER DETAIL

MAINE MEDICAL CENTER
ENDOSCOPY & VASCULAR DEPT. RENOVATION
PORTLAND, ME

ISSUED FOR CONSTRUCTION
2-24-09

CURRENT ISSUE STATUS

REV	DESCRIPTION	DATE
0	ISSUED FOR CONSTRUCTION	2-24-09

GRAPHIC SCALE:
0' 1'

SCALE: AS NOTED

PROJECT MANAGER: DV
JC/DRAWN BY: DIL
A/E OF RECORD: TC
CAD FILE: PL601-05169
PROJECT NO: 05169
DATE: 2-24-09

SHEET TITLE:
SCHEDULES AND DETAIL

SHEET No. **PL601**