

**NOTE:**

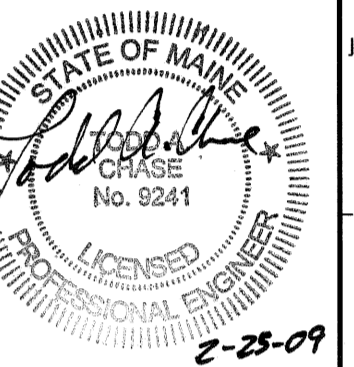
1. SEE SHEET M-001 FOR LEGEND AND ABBREVIATIONS.

**KEYED NOTES:**

- ① INSTALL NEW GAS ZONE VALVE BOX FOR CO2 INSTALLATION.
- ② SEE ARCH. PLANS FOR OUTLET ARRANGEMENT.
- ③ EXISTING NITROGEN PRESSURE CONTROL PANEL TO REMAIN.
- ④ NEW LOCATION FOR RELOCATED FIRE HOSE CABINET.
- ⑤ INSTALL INDIRECT WASTE UNDER SINK. TIE AHU CONDENSATE DRAIN INTO INDIRECT WASTE WITH AIRGAP FITTING.
- ⑥ CONNECT LAV-A TO EXISTING PLUMBING SERVING REMOVED SUBSTERILE SINK. EXTEND PIPING AS NECESSARY.
- ⑦ PIPE NEW STERILIZER TO EXISTING NON-POTABLE WATER PIPING SERVING REMOVED STERILIZER.
- ⑧ NEW MEDICAL GAS COLUMN, SEE SPECIFICATIONS.

144 Fore Street P.O. Box 618  
Portland, Maine 04104  
Tel: (207) 772-8446  
Fax: (207) 772-1070  
www.smartinc.com

ARCHITECTURE  
ENGINEERING  
PLANNING  
INTERIOR DESIGN  
COMMISSIONING



MAINE MEDICAL CENTER  
ENDOSCOPY & VASCULAR DEPT. RENOVATION  
PORTLAND, ME  
ISSUED FOR CONSTRUCTION  
2-24-09

CURRENT ISSUE STATUS:

REV	DESCRIPTION	DATE
0	ISSUED FOR CONSTRUCTION	2-24-09

GRAPHIC SCALE:  
0' 1'

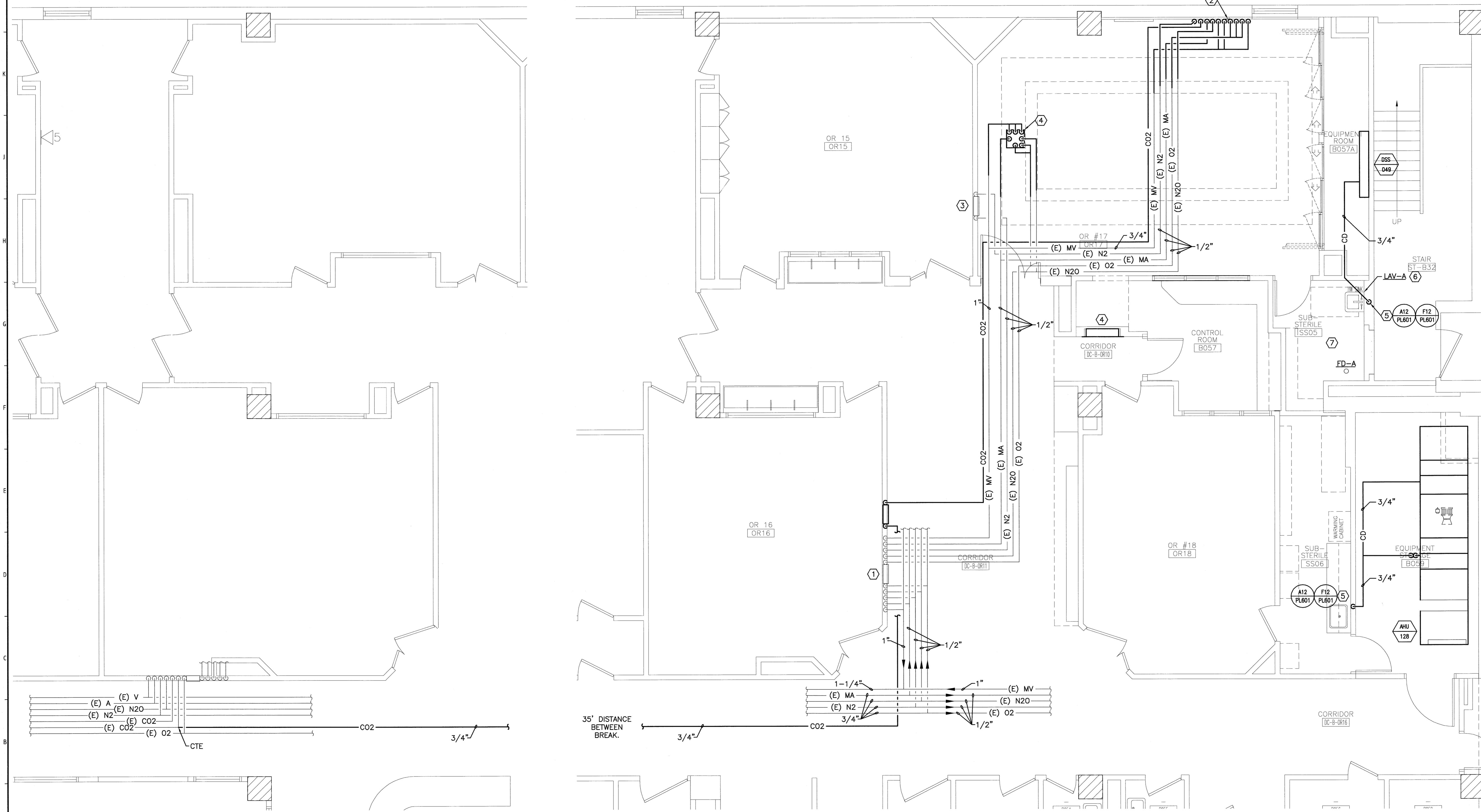
SCALE: 1/4"=1'-0"  
PROJECT MANAGER: DW  
JC/DRAWN BY: DL  
A/E OF RECORD: TAC  
CAD FILE: PL101-05169  
PROJECT NO.: 05169  
DATE: 2-24-09

SHEET TITLE:

PLUMBING PLANS

SHEET No.

PL101



**A1 MEDICAL GAS PIPING PLAN**

1/4"=1'-0"