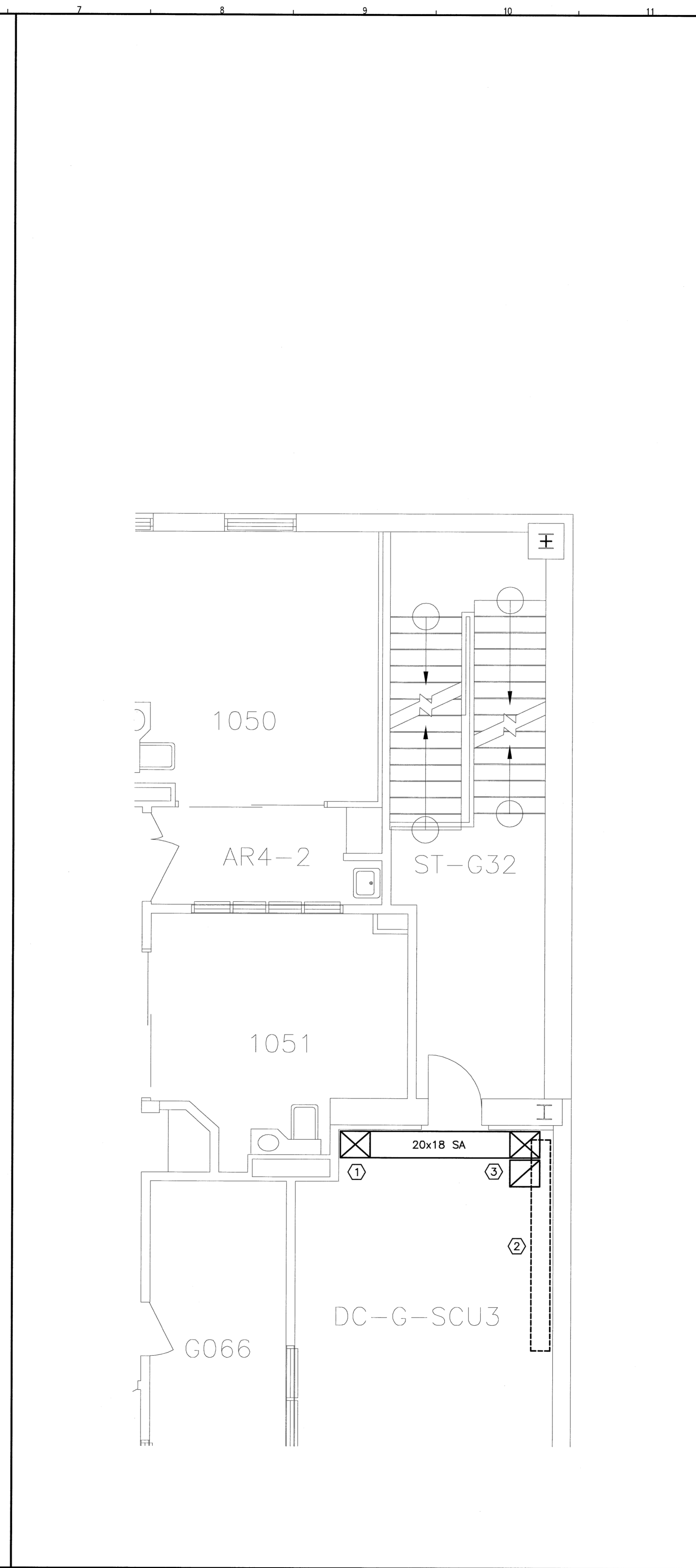
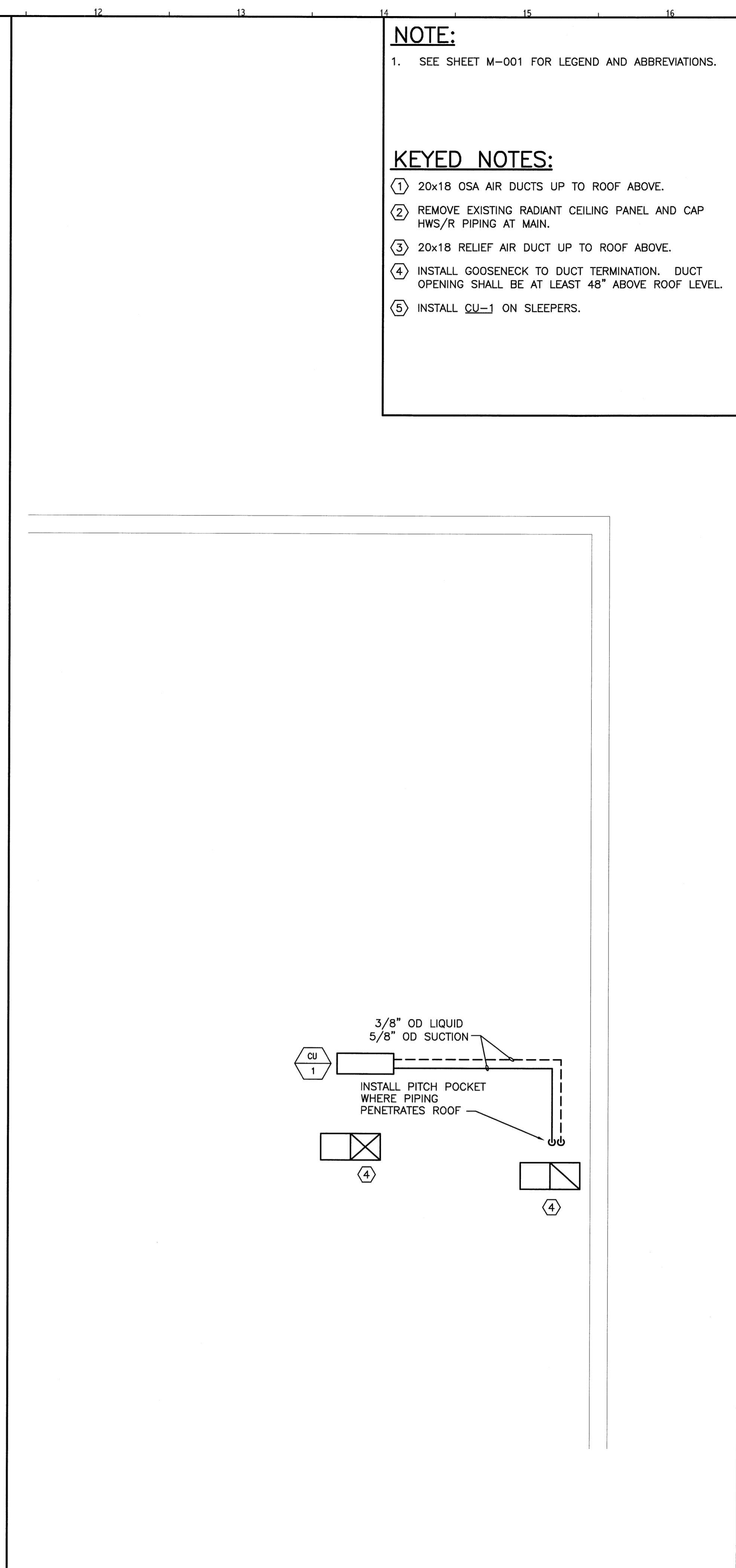


A1 SUB-BASEMENT PLAN
1/4"=1'-0"



A6 FIRST FLOOR PLAN
1/4"=1'-0"



A11 ROOF PARTIAL PLAN
1/4"=1'-0"

NOTE:
1. SEE SHEET M-001 FOR LEGEND AND ABBREVIATIONS.

KEYED NOTES:
 ① 20x18 OSA AIR DUCTS UP TO ROOF ABOVE.
 ② REMOVE EXISTING RADIANT CEILING PANEL AND CAP HWS/R PIPING AT MAIN.
 ③ 20x18 RELIEF AIR DUCT UP TO ROOF ABOVE.
 ④ INSTALL GOOSENECK TO DUCT TERMINATION. DUCT OPENING SHALL BE AT LEAST 48" ABOVE ROOF LEVEL.
 ⑤ INSTALL CU-1 ON SLEEPERS.

144 Fore Street, P.O. Box 618
Portland, Maine 04104
Tel: (207) 775-3846
Fax: (207) 775-1070
www.smartinc.com

ARCHITECTURE
ENGINEERING
PLANNING
INTERIOR DESIGN
COMMISSIONING

SMART

PROJECT NORTH

STATE OF MAINE
Professional Engineer
Chase
No. 5241
2-25-09

MAINE MEDICAL CENTER
ENDOSCOPY & VASCULAR DEPT. RENOVATION
PORTLAND, ME

ISSUED FOR CONSTRUCTION
2-24-09

REV	DESCRIPTION	DATE
0	ISSUED FOR CONSTRUCTION	2-24-09

GRAPHIC SCALE:
0" 1"

SCALE: 1/4"=1'-0"
 PROJECT MANAGER: DM
 JC/DRAWN BY: DIL
 A/E OF RECORD: TC
 CAD FILE: M-102-05169
 PROJECT NO: 05169
 DATE: 2-24-09

SHEET TITLE:
HVAC PARTIAL PLANS

SHEET No. **M-102**