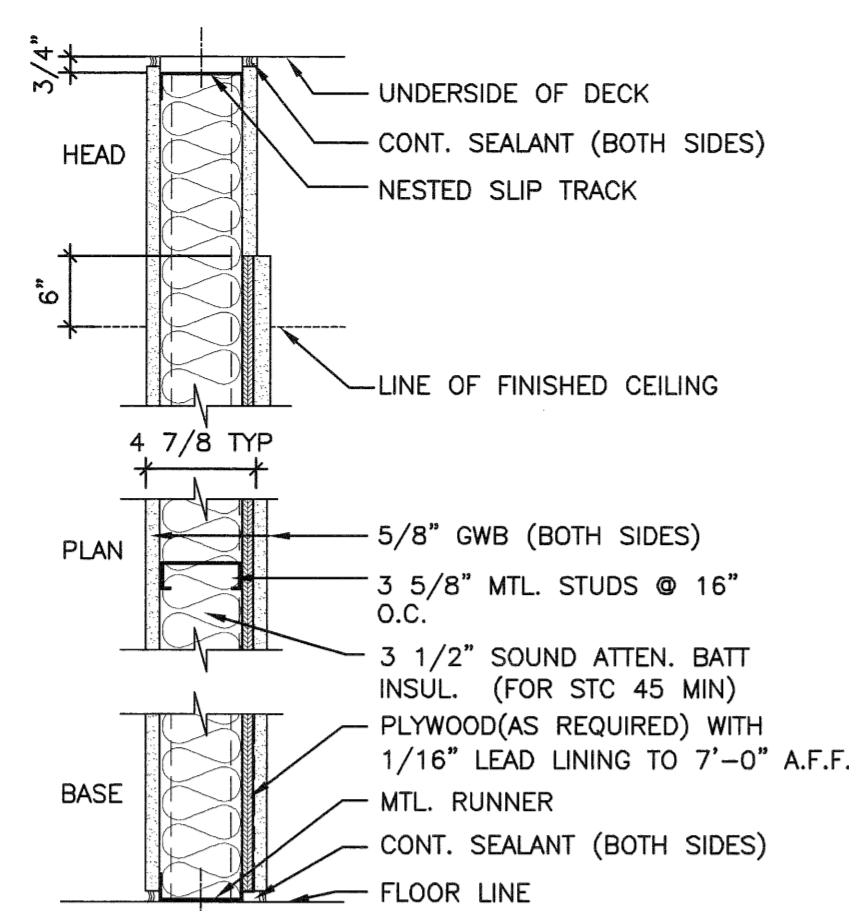
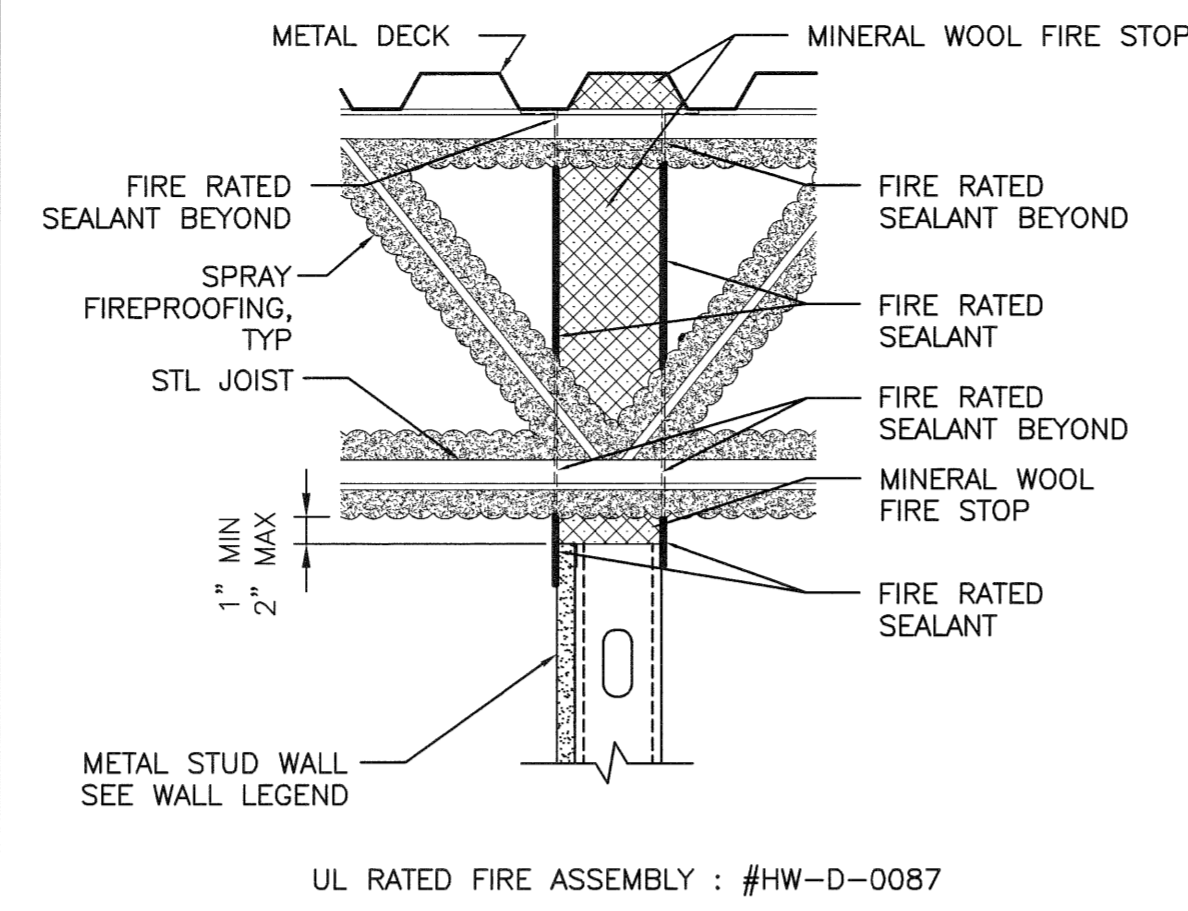


- 1 CONSTRUCT AS SHOWN
*TYPICAL PARTITION U.N.O.
NO BATT
- 1A 6\"/>

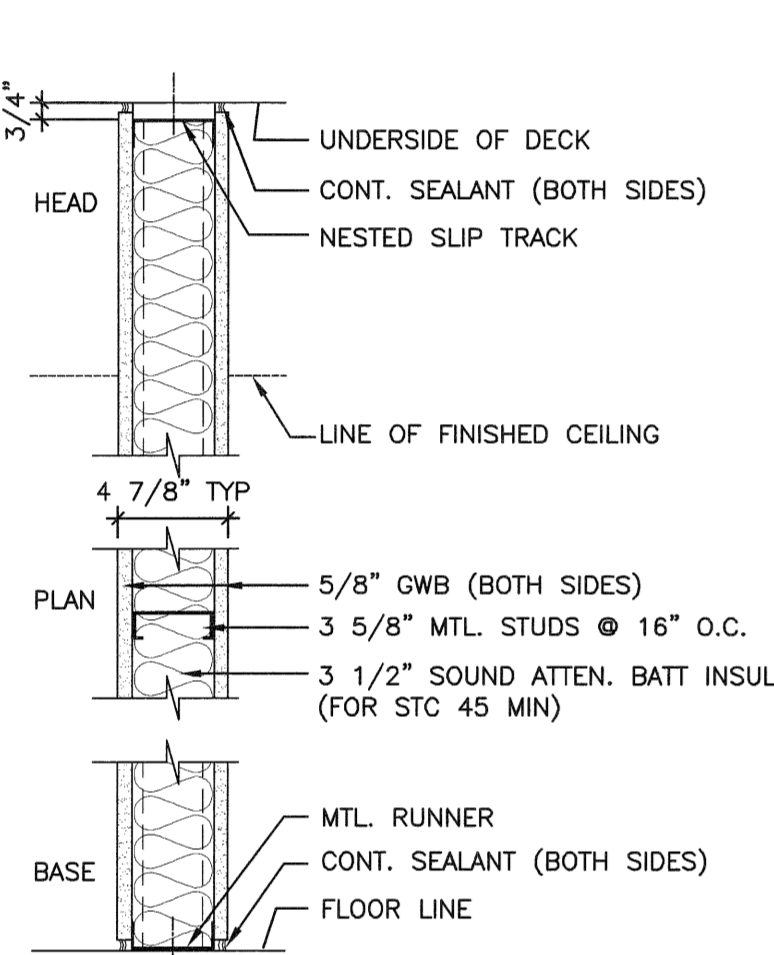
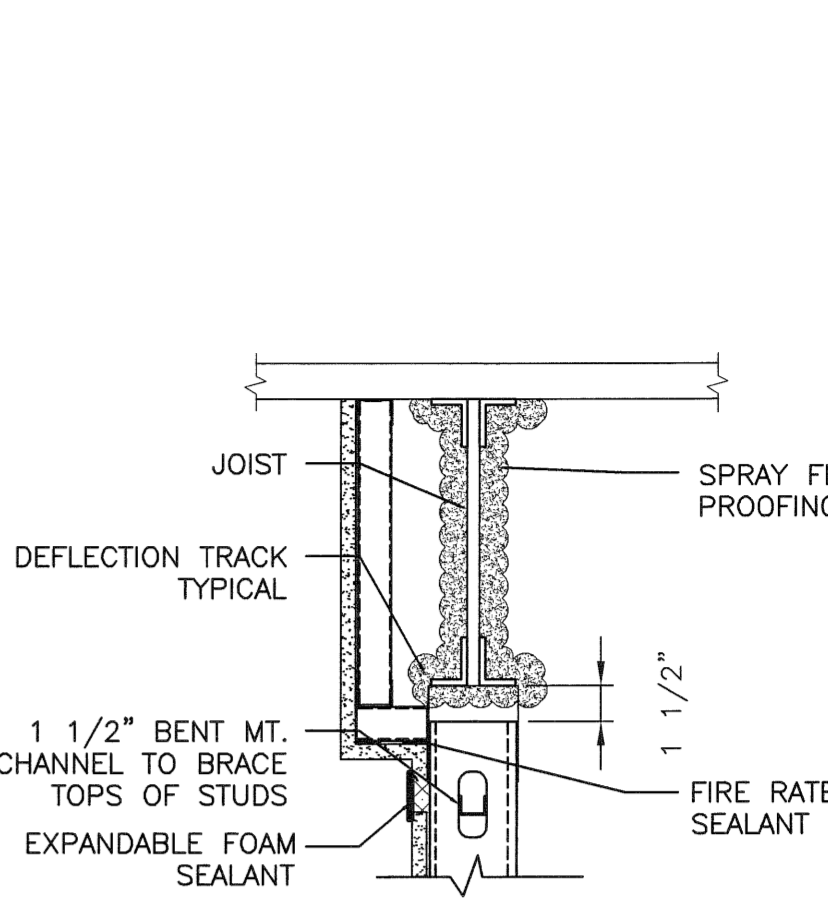
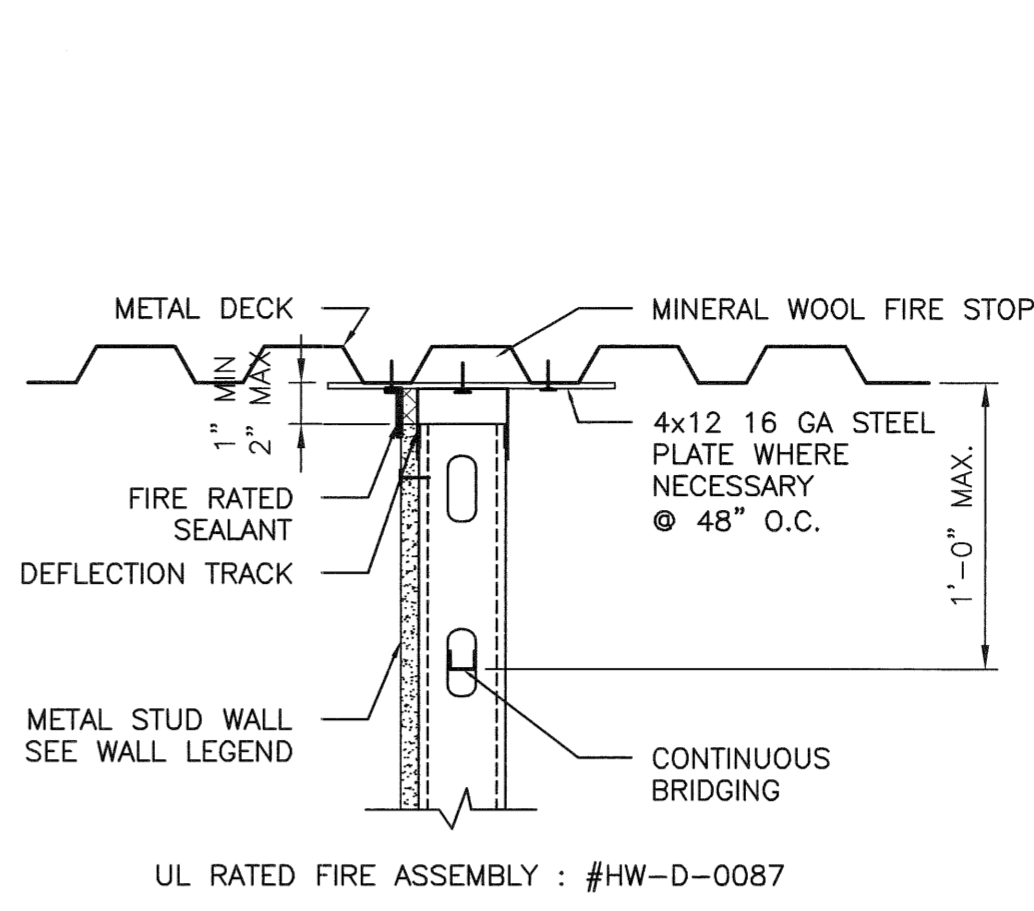
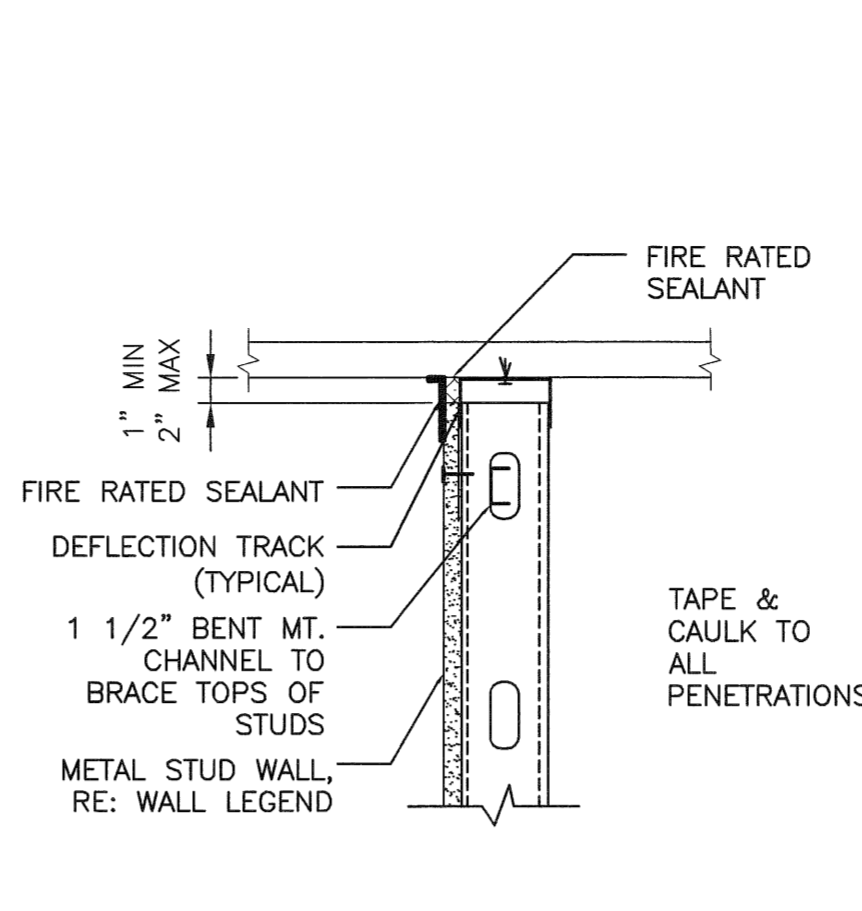


- 2 CONSTRUCT AS SHOWN
- 2A 6\"/>

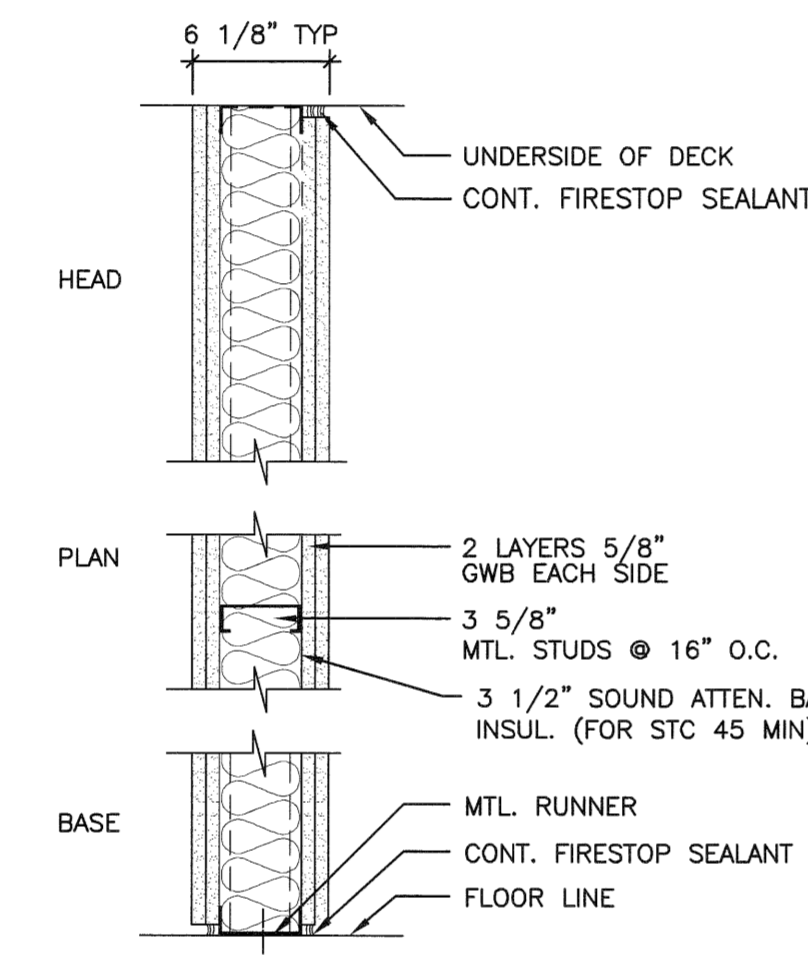


K1 TOP OF WALL CONDITIONS

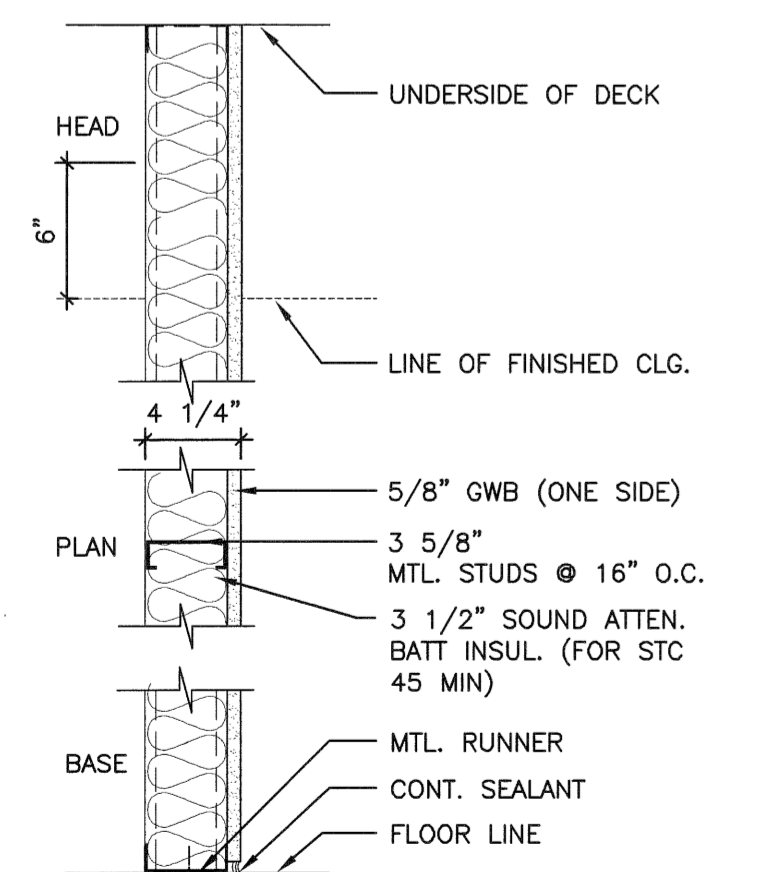
N.T.S. *



- 3 CONSTRUCT AS SHOWN 1 HOUR
FIRE-RESISTANCE RATING U.L.
DESIGN NO. U465
- 3A AS SMOKE PARTITION
- 3B AS SMOKE BARRIER
- 3C 6\"/>



- 4 CONSTRUCT AS SHOWN 2 HOUR
FIRE-RESISTANCE RATING U.L.
DESIGN NO. U419



- 5 CONSTRUCT AS SHOWN
- 5B GWB TO 6\"/>
- 5C CONSTRUCT AS SHOWN, SMOKE PARTITION
- 5D 1-1/2\"/>

- E INFILL EXISTING OPENING IN WALL. MATCH EXISTING ADJACENT CONSTRUCTION. ALIGN THE FACE OF GWB ON BOTH SIDES OF THE WALL.
- EU UPGRADE EXISTING PARTITION TO 1-HR RATED OR VERIFY PARTITION TYPE. INSTALL AN ADDITIONAL LAYER OF TYPE \"X\" 5/8\"/>
- EL UPGRADE EXISTING PARTITION TO INCLUDE LEAD LINING AT OR17 SIDE OF PARTITION. NOTE: PROVIDE LEAD THICKNESS AS NOTED SIM. TO BELOW.

GE EQUIPMENT LISTING

EQUIPMENT ON ORDER FROM GE HEALTHCARE, INSTALLED BY GE HEALTHCARE, PER QUOTE P1C55875V1 DATED 11-07-08
NOTE: LOCAL CONDITIONS MAY DICTATE THAT ITEMS IDENTIFIED IN THIS CATEGORY BE INSTALLED BY OTHERS.

ITEM NO.	QUANTITY ORDERED	REFER TO SHEET \"D\"	ITEM DESCRIPTION (* = EXISTING/REINSTALL)	WEIGHT	HEAT OUTPUT	DETAIL NO.	STRC PLAN	ELEC PLAN
1	18 in.	MONITOR ON WALL SUPPORT	26 lbs	204 btu	C7617B	S18	WBM2	C
2	18 in.	MONITOR ON DESK	17 lbs	204 btu	C7617	---	WBM3	C
3	1	ATLAS CABINET <C2>	568 lbs	1825 btu	B0558C	S100	C2	C
4	1	REMOTE CONTROL FOR INJECTOR	4 lbs	---	B5028	---	IEC	S
5	1	INJECTOR ELECTRONICS	37 lbs	320 btu	B5028	---	IE	S
6	1	INJECTOR HEAD ON TABLE RAIL	15 lbs	---	B5030A	---	IH	S
7	1	IYUS VOLCANO READY KIT	---	---	B551	---	---	---
8	1	OMEGA IV/V TABLE WITH ROTATING TOP	1750 lbs	600 btu	---	B5049N	LUS	C
9	1	LEAD GLASS SHIELD ON OVERHEAD COUNTERPOISED SUSPENSION	79 lbs	---	B5031A	B5031S	---	C
10	1	CONTROL ROOM MONITOR WITH DL KEYPAD	19 lbs	204 btu	C7412H C7617	---	---	S
11	1	OPERATORS CONSOLE	22 lbs	546 btu	C7617 C7617 B5050C	---	WBC1	C
12	1	AW WORKSTATION	81 lbs	1201 btu	M1013AW C7617	---	---	C
13	1	XR BUZZER <LOCATED ABOVE CEILING>	2 lbs	---	B5150H	---	XRB	---
14	1	INNOVA POSITIONER <REFERENCE TABLE BASE-PLATE DETAIL FOR FLOOR MOUNTING INFORMATION>	1653 lbs	2416 btu	B5050A B5050B B5050	---	LC1	C
15	1	UPS INTERFACE BOX	---	---	E45021B	---	UIB	---
16	1	UPS CABINET	1170 lbs	6750 btu	E4502SG	---	UPS	---
17	1	DETECTOR CHILLER	93 lbs	706 btu	B5049F	---	DC	S
18	1	WATER CHILLER	449 lbs	18716 btu	M0917B	---	CHLR	C
19	1	BOLUS CHASE HANDSWITCH	2 lbs	---	---	---	WBBC	---
20	1	ATLAS CABINET <C1>	998 lbs	3389 btu	B0558C	S100	C1	C

THE FOLLOWING ITEMS, WHICH HAVE BEEN ORDERED FROM GE HEALTHCARE, ARE TO BE INSTALLED BY THE CUSTOMER OR HIS CONTRACTOR.

50	6	VITALINO SPEAKER	---	---	---	---	---	---
51	2	VITALINO MICROPHONE	---	---	---	---	---	---
52	1	VITALINO CONSOLE	---	---	B0566	---	---	---
53	1	FILTER ENCLOSURE	90 lbs	---	S1875PC	---	FE	---
54	1	INNOVA MAIN DISCONNECT, REFERENCE JUNCTION POINT \"A\" ON SHEET E1 FOR DETAILED DESCRIPTION.	275 lbs	1532 btu	E4502AE	---	A	---

ANCILLARY ITEMS

CUSTOMER/CONTRACTOR SUPPLIED AND INSTALLED ITEMS

ITEM NO.	ITEM DESCRIPTION (* INDICATES EXISTING)
60	SCRUB SINK
61	CONTROL WALL TO CEILING WITH LEAD GLASS VIEWING WINDOW.
62	COUNTER TOP FOR EQUIPMENT- PROVIDE GROMMETED OPENINGS AS REQUIRED TO ROUTE INTERCONNECT CABLES TO RACEWAY BELOW COUNTERTOP.
63	X-RAY ON WARNING LIGHT - AVAILABLE FROM GE SUPPLY CALL 800-200-9760. GE CAT. NO. W1418W-DF-XIU
64	MINIMUM DOOR OPENING FOR EQUIPMENT DELIVERY IS 44 IN. W x 83 IN. H [1118mm x 2108mm]. CONTINGENT ON A 96 IN. [2438mm] CORRIDOR WIDTH
65	CUSTOMER SUPPLIED STORAGE CABINET
66	STERIS TWO MONITOR SUSPENSION WITH LAMP
67	STERIS ONE MONITOR SUSPENSION
68	* STERIS ONE MONITOR SUSPENSION ON CEILING TRACK
69	D. R. BED

THE FOLLOWING ITEMS ARE AVAILABLE FROM GE HEALTHCARE TECHNOLOGIES. CONTACT YOUR LOCAL GE HEALTHCARE SERVICE REPRESENTATIVE FOR PRICING AND AVAILABILITY.

90	X-RAY ROOM WARNING LIGHT/ROOM LIGHTING CONTROL PANEL REFERENCE JUNCTION POINT \"X\" ON SHEET E1 FOR DETAILED DESCRIPTION -CAT. NO. E4505SS FOR WARNING LIGHT & ROOM LIGHT CONTROL.
----	--

GENERAL SPECIFICATIONS

- o THE REQUIRED CEILING HEIGHT INDICATED ON THESE PLANS IS TO ENSURE EQUIPMENT FUNCTION IS NOT INHIBITED. CONSULT WITH YOUR LOCAL GEHC INSTALLATION SPECIALIST REGARDING ACCEPTABILITY OF OTHER CEILING HEIGHTS.
- o CHECK ALL DOOR OPENINGS AND HALLWAYS FROM DELIVERY LOCATION TO WHERE EQUIPMENT IS TO BE INSTALLED TO ENSURE THE ROUTE PHYSICALLY AND STRUCTURALLY WILL ACCOMMODATE THE EQUIPMENT AS SHIPPED.
- o RADIATION PROTECTION REQUIREMENTS ARE NOT INDICATED ON THIS PLAN. WHERE NEEDED PER NATIONAL OR LOCAL CODE THEY SHALL BE SPECIFIED BY A QUALIFIED RADIOLOGICAL PHYSICIST.
- o THE DEVELOPMENT OF THE EQUIPMENT LAYOUT, ROOM DIMENSIONS, MECHANICAL AND ELECTRICAL SUGGESTIONS IS PREDICATED UPON THE BEST INFORMATION OBTAINABLE FROM THE SITE, COUPLED WITH THE CUSTOMER'S KNOWN DESIRES. ARCHITECTURAL OR ELECTRICAL CHANGES INCLUDING RELOCATION OF EQUIPMENT ILLUSTRATED ON THIS DRAWING IS ALLOWED ONLY WITH NOTIFICATION, IN WRITING, AND REVIEW BY GEHC SERVICE DEPARTMENT. EQUIPMENT OPERATION, SERVICEABILITY, AND RESTRICTING CABLE LENGTHS, ETC., MAKE THIS ESSENTIAL FOR A PROPER INSTALLATION. GEHC RESERVES THE RIGHT TO MAKE ON THE JOB CHANGES BECAUSE OF CUSTOMER REQUIREMENTS AND/OR OBSTACLES IN CONSTRUCTION, ETC..
- o ALL WORK TO BE IN COMPLIANCE WITH NATIONAL AND LOCAL BUILDING SAFETY CODES.
- o DIMENSIONS ARE TO FINISHED SURFACES OF ROOM

MAGNETIC INTERFERENCE SPECIFICATIONS

IMAGE INTENSIFIERS MUST BE LOCATED IN AMBIENT STATIC MAGNETIC FIELDS OF LESS THAN 1 GAUSS TO GUARANTEE SPECIFIED IMAGING PERFORMANCE.
X-RAY TUBES MUST BE LOCATED IN AMBIENT STATIC MAGNETIC FIELDS OF LESS THAN 10 GAUSS TO GUARANTEE SPECIFIED PERFORMANCE.
SYSTEM ELECTRONICS MUST BE LOCATED IN AMBIENT STATIC MAGNETIC FIELDS OF LESS THAN 10 GAUSS TO GUARANTEE DATA INTEGRITY.
OPERATORS CONSOLE EQUIPMENT MUST BE LOCATED IN AMBIENT STATIC MAGNETIC FIELDS OF LESS THAN 10 GAUSS TO OBTAIN SPECIFIED GEOMETRIC LINEARITY.

A1 PARTITION TYPES

N.T.S. *

A8 GE EQUIPMENT LIST & SPECS, FOR INFORMATION ONLY, REFER TO GE SPECIFICATIONS & DWGS

N.T.S. *

144 Fore Street P.O. Box 618
Portland, Maine 04104
Tel: (207) 772-3846
Fax: (207) 772-1070
www.smrti.com

ARCHITECTURE
ENGINEERING
PLANNING
INTERIOR DESIGN
COMMISSIONING

SMRTI

MAINE MEDICAL CENTER
ENDOSCOPY & VASCULAR DEPT. RENOVATION
PORTLAND, ME

ISSUED FOR CONSTRUCTION
2-24-09

CURRENT ISSUE STATUS:

REV	DESCRIPTION	DATE
0	ISSUED FOR CONSTRUCTION	2-24-09

GRAPHIC SCALE:
0" 1"

SCALE: AS NOTED

PROJECT MANAGER: DIV
DRAWN BY: DIV
A/E OF RECORD: CDP
CAD FILE: A-101-05169
PROJECT NO: 05169
DATE: 2-24-09
SHEET TITLE:
PARTITION TYPES AND EQUIPMENT SCHEDULES

SHEET No. **G1002**